



PARADOX SR250 Wireless Siren w-Built-In Strobe Light Installation Guide

[Home](#) » [Paradox](#) » PARADOX SR250 Wireless Siren w-Built-In Strobe Light Installation Guide 

Contents

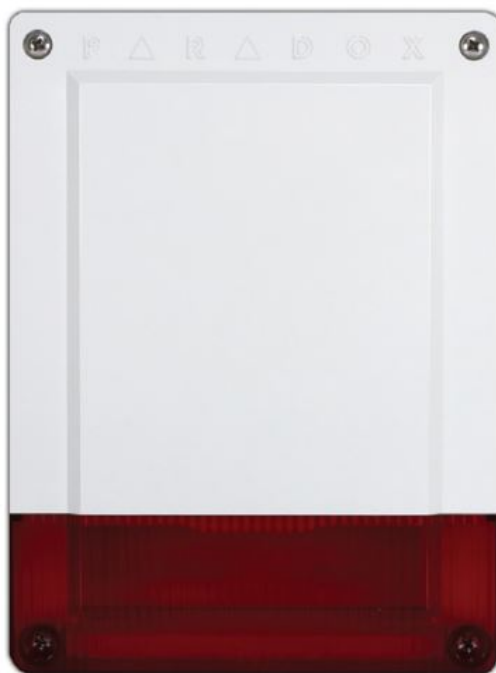
- 1 PARADOX SR250 Wireless Siren w-Built-In Strobe Light
- 2 SR250 Wireless Siren w/Built-In Strobe Light
- 3 Introduction
- 4 Overview
- 5 Installation
- 6 LED Feedback
- 7 Programming
- 8 Upgrading Firmware
- 9 Tamper Supervision
- 10 FCC Statment
- 11 Documents / Resources
 - 11.1 References
- 12 Related Posts

PARADOX

PARADOX SR250 Wireless Siren w-Built-In Strobe Light



SR250 Wireless Siren w/Built-In Strobe Light



Lenses



Red



Blue



Amber



Clear

Introduction

The SR250 is a weatherproof, stand-alone, fully supervised outdoor wireless siren with built-in strobe light and wireless transceiver. The SR250 uses 2-way wireless communication, which provides continuous supervision between the panel and siren with fast response to alarm signals within four seconds. With its tough weatherproof construction, the SR250 operates reliably from -30 °C to 50 °C (-22 °F to 122 °F) when using alkaline batteries or power supply.

With normal use, the SR250 will function up to 3 years without the need to replace the batteries (battery life can be extended by using an optional AC or DC power supply). This guide describes how to install and configure the SR250 wireless siren.

Overview

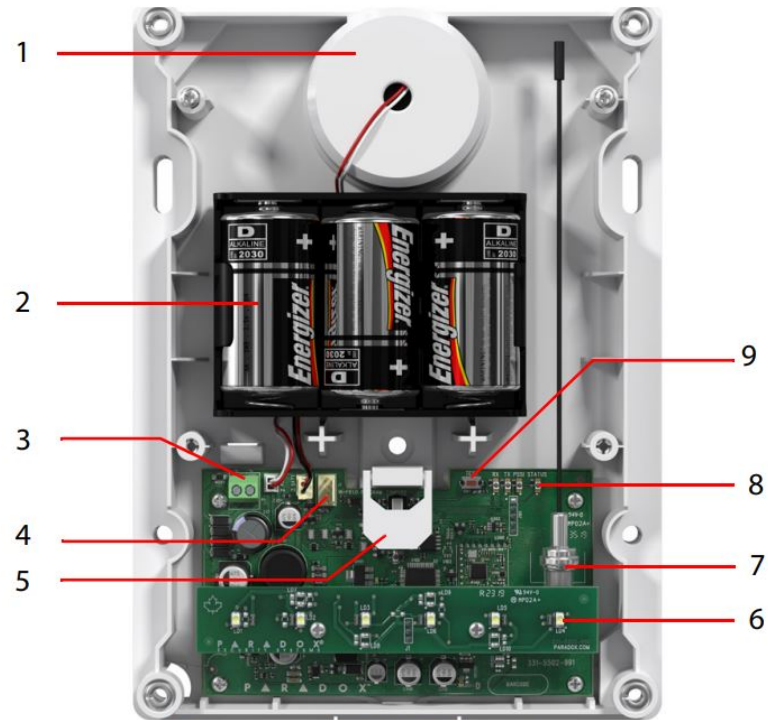


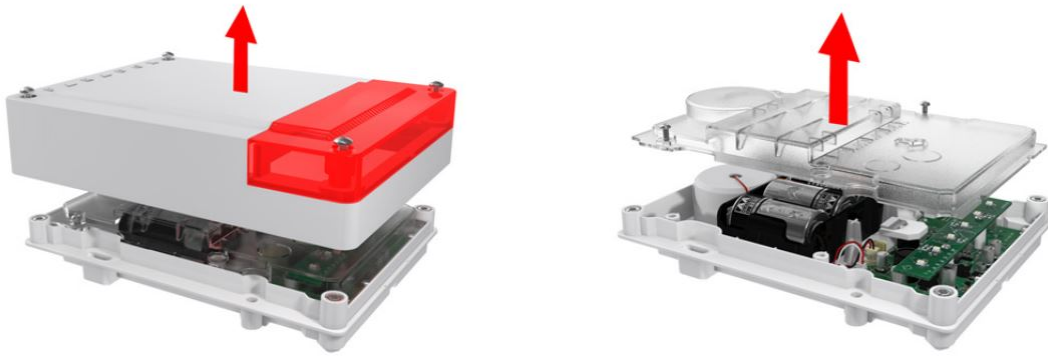
Figure 1: SR250 Overview

Number	Overview Description
1	100 dB siren
2	Battery pack (3 “D” size alkaline batteries) <i>For EN installations, 3 “D” batteries must be installed.</i>
3	Power supply input (8-16 Vac / 9-20 Vdc)
4	Infield connector
5	Dual-action tamper switch (detects when cover is removed and when unit is removed from wall)
6	Strobe lights
7	Antenna (Can be extended using an RG6 or RG59 coaxial cable with standard male F connectors. Attach the antenna using a female/female F adapter)
8	Status and Signal Strength LEDs
9	Learn switch

Installation

Only qualified persons should install, operate, maintain, and repair this equipment.

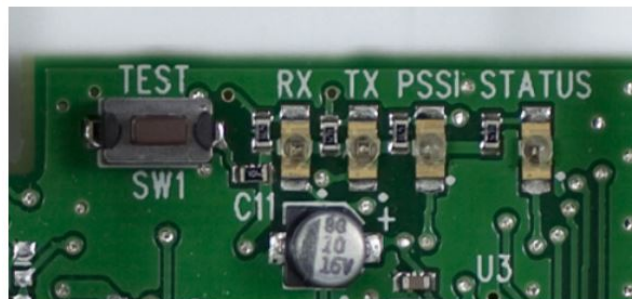
1. Write down the serial number (on the back of the unit) and location of the SR250 for later reference, to insert into the Paradox BabyWare software.
2. Loosen the four screws from the cover from the siren and remove cover.
3. Loosen the four screws from the PCB cover and remove.



4. Screw the SR250 siren onto the wall through the five provided holes (four wall and one Tamper Spacer).
5. Ensure that the Tamper switch is screwed onto the wall through the Tamper Spacer.
6. Batteries:
 1. If the siren already has batteries installed:
 - Remove the plastic tab between the top battery terminals and the battery compartment
 - Leave the cover off until you learn the siren
 2. If the siren does not have batteries installed:
 - Insert the batteries – ensure correct polarity
 - Leave the cover off until you learn the siren

Note: We recommend replacing the battery every three years to avoid leakage.
7. After programming the siren (see Programming section): Reinstall the PCB cover.
8. Reinstall the top cover.

LED Feedback



The following table describes LED Status Indicators.

LED Indicator	Description/Status
TX	Sending data
RX	Receiving data
PSSI	Signal strength siren receives from control panel Flash 4x – strong signal Flash 3x – good signal Flash 2x – weak signal Flash 1x – very weak signal (relocate) No flash – no signal
Status	Flash once/sec. – processor is on Flash once/4 sec. – power save mode

Programming

Program the SR250 either through a supported keypad or through BabyWare software (BabyWare).

Programming with Keypads

Feature	Program		
	MG6250	MG/SP	EVO192/HD (requires RTX3)
	Sections correspond to sirens 1- 4. EXAMPLE: [0802]: Learn Siren 2 for MG6250		Sections correspond to sirens 1 – 8
Learn Siren	[0801] – [0804]	[683] – [686]	[2851] – [2858]
	<p>Press and hold the Learn switch for 3 seconds after entering the section to learn the siren.</p> <p>WARNING: When pressing the Learn switch, the SR250 squawks and the strobe light flashes five times to confirm siren registration to the panel</p>		

Assign Partition to Siren	–	–	[2861] – [2868]
Display Signal Strength	[0801] – [0804]	[687] – [690]	[2871] – [2878]
	Press and hold the Learn switch for 3 seconds after entering the section to display the siren signal strength that the panel receives. Requires keypad K32LCD+ V1.3 or higher		
Label Siren	[0811] – [0814]	[691] – [694]	–
	Labels identify sirens when reporting events (for MG/ SP only: via e-mail through the IP150+. For MG6250 through SMS personal reporting) and for troubleshooting purposes. Maximum 16 characters		
Temporary Tamper Switch Deactivation for Maintenance	[0800]	[695]	[2870]
	Press [ENTER] after entering the section to deactivate tamper alarm until the cover is reinstalled or after 30 minutes		
Panel Supervision of Siren	[0820]	[587]	–
	ON: Enabled (default) OFF: Disabled		

	The control panel supervises the presence of the SR250. If lost, the control panel follows global supervision options set in the control panel
--	--

Programming with BabyWare

1. Open BabyWare > Connect your Account.
2. In the Main window: Select the Add Item button > Wireless Sirens.
3. Fill-in the SR250 label, location and serial number.
4. Select Save.

Upgrading Firmware

Upgrade SR250 firmware through the Paradox InField software (V5.5.9 or higher) using the 307USB Direct Connect Interface. The SR250 requires the batteries installed in order to upgrade the firmware.

Note: Ensure that the SR250 is awake before upgrading the firmware. To wake up the siren: press the Learn switch (see #9 in Figure 1). The siren provides a 60 second delay in order to begin the update.

1. Remove the front cover as well as the PCB cover.
2. Connect the 307USB to the InField connector (see #4 in Figure 1).
3. Upgrade according to the firmware upgrade instructions: Go to www.paradox.com > Software > InField Firmware Upgrade Instructions.

Tamper Supervision

If a tamper is detected, the SR250 will sound an alarm and the strobe light will flash for 4 minutes. The control panel will follow the global supervision options set in the panel.

Specifications

Specification	Description
Power	4.5 Vdc (3 "D" size alkaline batteries) Optional: 8-16 Vac / 9-20 Vdc external power
Battery life	Up to 3 years based on normal use (e.g., 2 alarms per year with strobe for 2.5 hours and 8 squawks per day at an average of 25 °C (77 °F)). Using optional power source will extend battery life
Low Battery Voltage Signal	Signal sent at 3.4 Vdc

Consumption	Sleep: 22 uA, Standby: 130 uA, Alarm: 550 mA
RF frequency	433 MHz (approved for FCC and IC) or 868 MHz
Siren	100 dB (1 meter) <i>For EN, maximum sound duration should be set to 4 minutes</i>
Siren Type	Type X / Type W
Dimensions	24 x 6 x 18 cm (9.5 x 2.3 x 7 in.)
Operating Temperature	Battery only: -30 °C to 50 °C (-22 °F to 122 °F)
RF range	70m (229 ft)
Certification	EN 50131-4, EN 50131-1 Grade 2, EN 50130-5 Environmental Class IV, CE IP Rating: IP54 Certification Body: Applica Test and Certification
<i>Please use only safety approved power supply according to IEC/EN 60950-1 or 62368-1 with rated voltage of 8-16 Vac or 9-20 Vdc and rated current of 2A max.</i>	

Please use only safety approved power supply according to IEC/EN 60950-1 or 62368-1 with rated voltage of 8-16 Vac or 9-20 Vdc and rated current of 2A max.

FCC Statment

FCC and Industry Canada Compliance Statement

This device complies with FCC Rules Part 15 and with Industry Canada license exempt RSS standard(s). Operation is subject to two conditions:

1. This device may not cause harmful interference
2. This device must accept any interference that may be received or that may cause undesired operation. Le present appareil est conforme aux CNR d'Industrie Canada applicables aux appareils radio exempts de licence. L'exploitation est autorisée aux deux conditions suivantes :
 - l'appareil ne doit pas produire de brouillage, et
 - l'utilisateur de l'appareil doit accepter tout brouillage radioélectrique subi, même si le brouillage est susceptible d'en compromettre le fonctionnement.

IC: 2438A-SR250

FCC WARNING

This equipment has been tested and found to comply with the limits for a Class B digital device, pursuant to Part 15 of the FCC Rules. These limits are designed to provide reasonable protection against harmful interference in a residential installation. This equipment generates, uses and can radiate radio frequency energy and, if not installed and used in accordance with the instructions, may cause harmful interference to radio communications. However, there is no guarantee that interference will not occur in a particular installation. If this equipment does cause harmful interference to radio or television reception, which can be determined by turning the equipment off and on, the user is encouraged to try to correct the interference by one or more of the following measures:

- Reorient or relocate the receiving antenna.
- Increase the separation between the equipment and the receiver.
- Connect the equipment into an outlet different from that to which the receiver is connected.
- Consult the dealer or an experienced radio/TV technician for help.

Changes or modifications to this equipment not expressly approved by the party responsible for compliance (Paradox Security Systems Ltd.) could void the user's authority to operate the equipment.

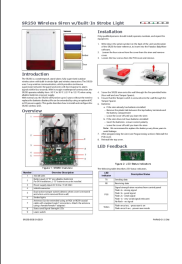
Warranty

For complete warranty information on this product please refer to the Limited Warranty Statement found on www.paradox.com/terms. Your use of the Paradox product signifies your acceptance of all warranty terms and conditions.

Patents

US, Canadian and international patents may apply. Paradox is a trademark or registered trademark of Paradox Security Systems (Bahamas) Ltd. © 2021 Paradox Security Systems Ltd.

Documents / Resources

	<p>PARADOX SR250 Wireless Siren w-Built-In Strobe Light [pdf] Installation Guide SR250, KDYSR250, SR250, Wireless Siren w-Built-In Strobe Light</p>
---	---

References

- ▲ [Paradox - Headquarters](#)
- ▲ [Paradox - Headquarters](#)
- ▲ [Paradox - Headquarters](#)

