



Pantum Printer Instruction Manual

[Home](#) » [Pantum](#) » Pantum Printer Instruction Manual

Contents [[hide](#)]

[1 Pantum Printer Instruction Manual](#)

[1.1 Operating Paper Tray](#)

[2 Documents / Resources](#)

[2.1 References](#)

[3 Related Posts](#)

Pantum Printer Instruction Manual

Official website:

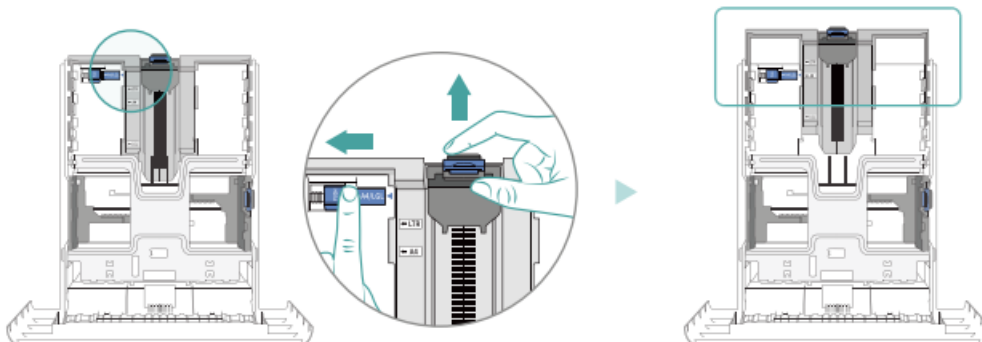
www.pantum.com

Service email:

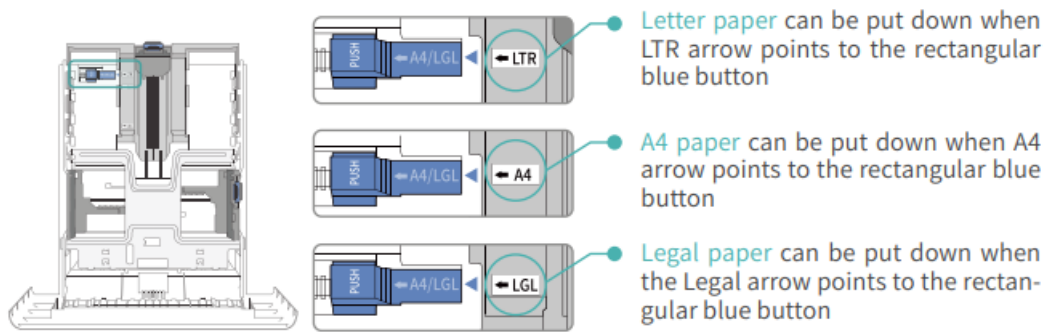
pantum-service@pantum.com

Operating Paper Tray

1. Push the blue buttons at the same time



2. As shown in the figure:

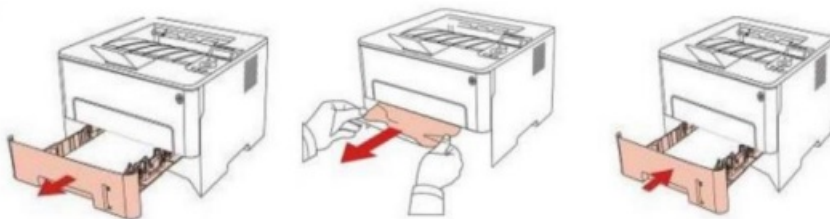


How can I clear any paper jam in the printer?

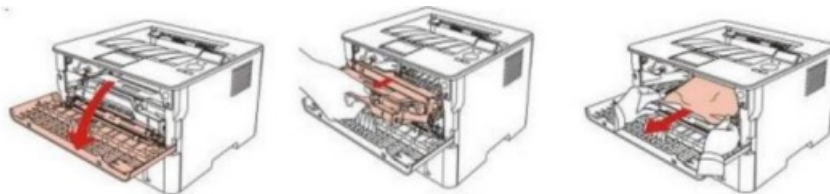
There are Five conditions paper jam possible as below:

A) Middle Jam

Step1: Pull paper tray out, then gently pull the jammed paper out, and Install paper tray.



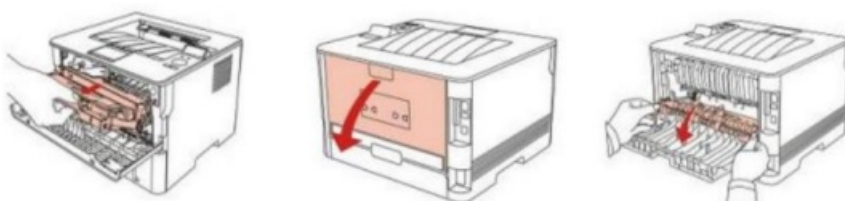
Step2: Open the front cover, take the laser toner cartridge out along the track, then gently pull the jammed paper out.



Step3: After taking out papers jammed, install the laser toner cartridge again and close the front cover, then the printer will recover printing.

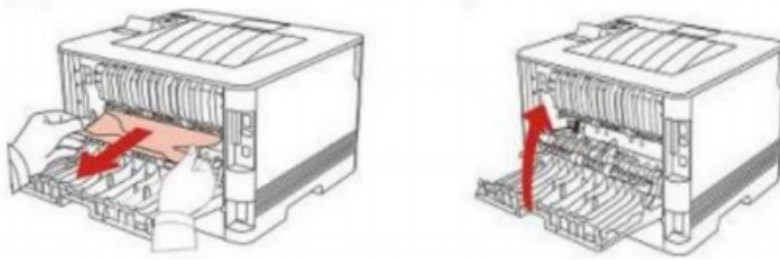
B) Paper Jam in the Fuser unit

Step1: Open the front cover and then remove the laser toner cartridge along the guide rail, then open the rear cover, take out the fuser door using the handles on both sides.



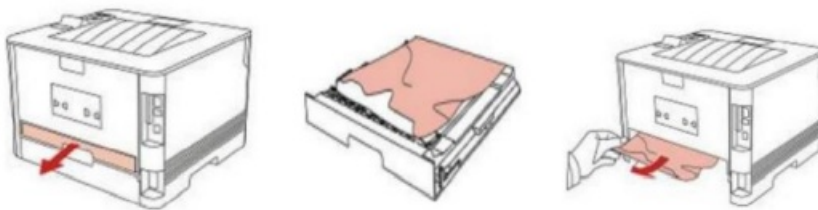
Step2: Gently pull the jammed paper out, then close the back cover after removing the paper jammed, install a

new toner cartridge and then close the front cover; then, the printer will recover printing automatically.



C) Duplex Unit Jam

Step1: Remove the duplex printing unit from the back of the printer, then remove the jammed paper from the duplex unit, If the paper does not come out along with the duplex unit, open the tray and remove the jammed paper directly from the bottom.



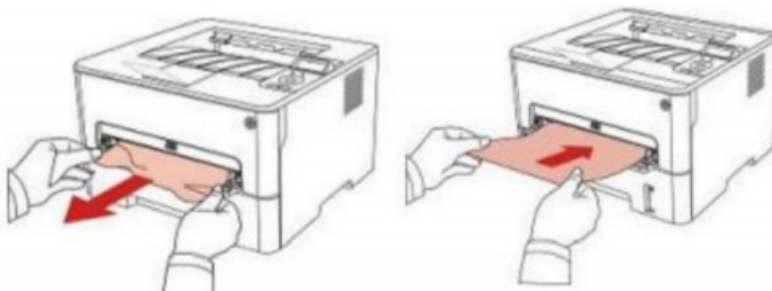
D) Paper Jam occurs on the standard feed tray

Step1: Open the tray, then gently pull the jammed paper out, after taking papers jammed out, please reinstall the paper tray inside the printer and close the front cover, then the printer will recover printing automatically.



E) Paper Jam occurs on the manual feed tray

Step1: Open the tray, then gently pull the jammed paper out, after taking papers jammed out, please reinstall the paper tray inside the printer and close the front cover, then the printer will recover printing automatically.





[Pantum Printer](#) [pdf] Instruction Manual

References

- [P pantum.com](https://pantum.com)