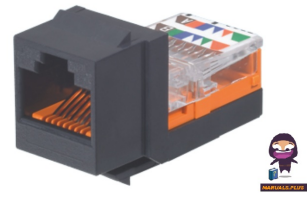


PANDUIT
NK5E88M Series
NetKey Keystone
Style Jack Modules



PANDUIT NK5E88M Series NetKey Keystone Style Jack Modules Installation Guide

[Home](#) » [PANDUIT](#) » PANDUIT NK5E88M Series NetKey Keystone Style Jack Modules Installation Guide 

Contents

- [1 PANDUIT NK5E88M Series NetKey Keystone Style Jack Modules](#)
- [2 Specifications](#)
- [3 FAQ](#)
- [4 INSTALLATION INSTRUCTIONS](#)
- [5 Removal Instructions](#)
- [6 WIRING SEQUENCES](#)
- [7 Contact](#)
- [8 Documents / Resources](#)
 - [8.1 References](#)

PANDUIT

PANDUIT NK5E88M Series NetKey Keystone Style Jack Modules



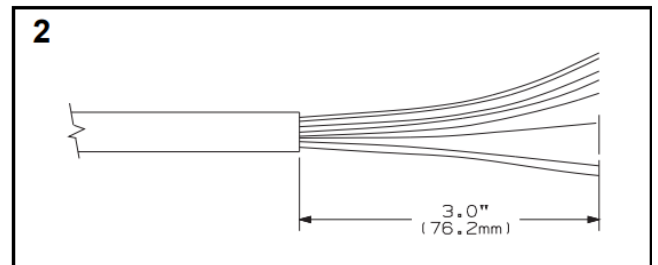
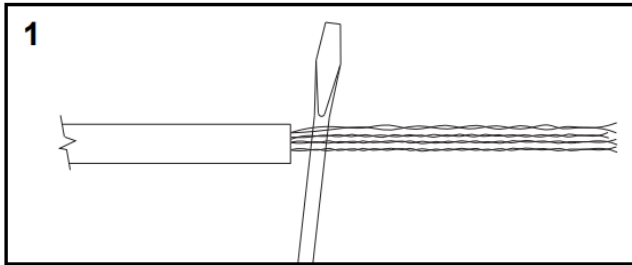
Specifications

- **Product Name:** NetKey Network Components Keystone Cabling System
- **Part Numbers:** NK5E88M**Y
- **Category:** Network Components
- **Compatibility:** Keystone Style Outlets and Patch Panels
- **Wire Positions:** Color-coded according to T568A, T568B, AT&T 258A, WECO standards
- **Cable Compatibility:** Terminates PVC or Plenum rated 22-24 AWG solid or stranded IWC cable

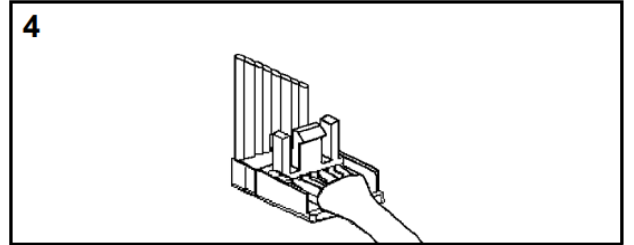
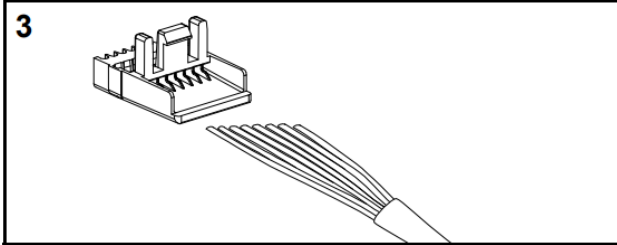
FAQ

- **Q:** What type of cables can be terminated using NetKey Keystone Style Jack Modules?
 - **A:** NetKey Keystone Style Jack Modules can terminate PVC or Plenum rated 22-24 AWG solid or stranded IWC cable.
- **Q:** What are the color-coded wire positions for the Category 5E Keystone Style Jack Modules?
 - **A:** The wire positions are color-coded according to T568A, T568B, AT&T 258A, WECO standards. Refer to the wiring diagram for detailed information.
- **Q:** How can I remove the Termination Cap from the housing?
 - **A:** Push forward and down against the latch at the end of the guide ramp to slide a screwdriver under the cap and separate it from the housing.

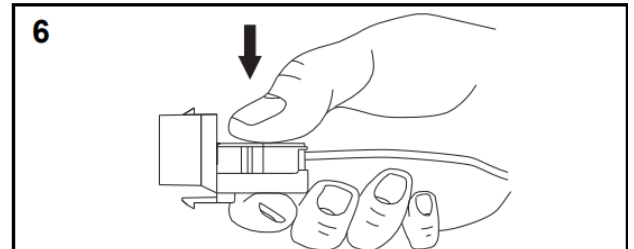
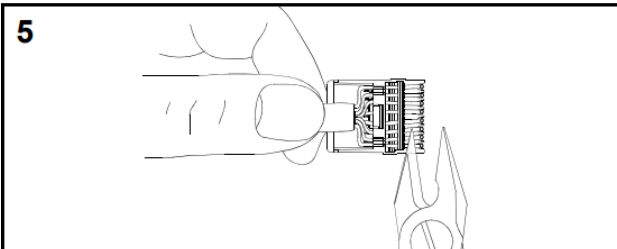
INSTALLATION INSTRUCTIONS



1. Remove 3" (76.2mm) of cable jacket and untwist pairs.
2. Straighten conductors and arrange in proper color sequence.



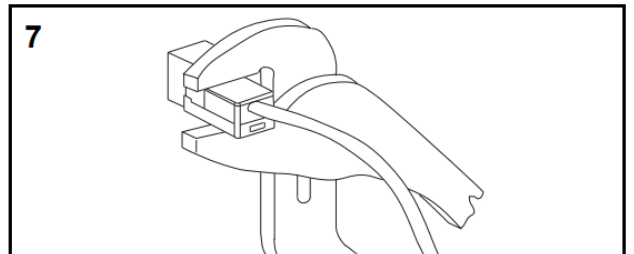
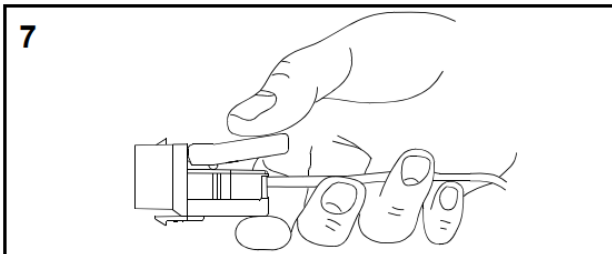
3. Cut conductors on an angle and insert into cap.
4. Pull conductors until outer jacket is inside cap. Bend up 90°.



5. Trim conductors flush with cap using wire snipping tool (CWST).

- **NOTE:** Cable jacket is inside the cover.

6. Snap cap squarely on housing until it clicks.

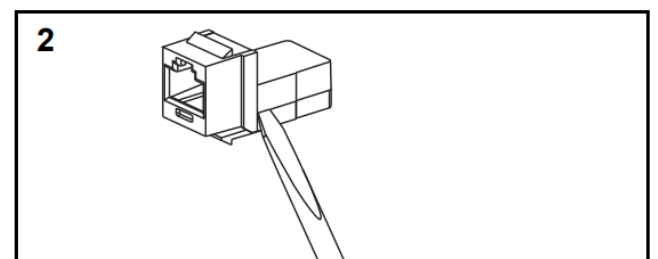
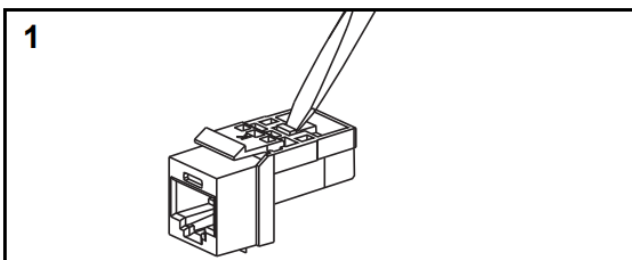


7. Apply pressure to cap until it clicks again. Cap must be flush on housing.

- Use Snap Tool (7A) or standard Slip Lock Pliers (7B).

Removal Instructions

Termination Cap Removal Instructions



1. Push forward and down against latch at end of guide ramp until

2. Slide screwdriver under cap to separate from housing.

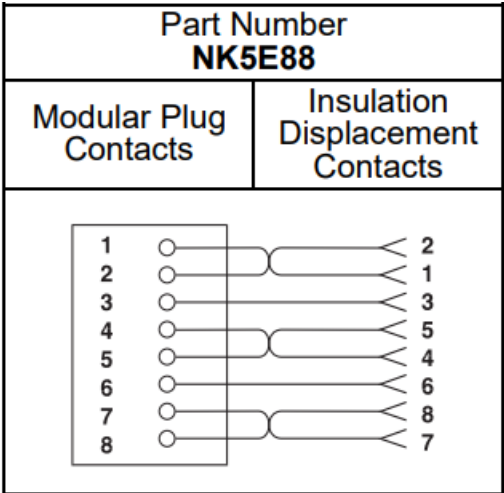
FOR USE IN KEYSTONE STYLE OUTLETS AND PATCH PANELS ONLY
OVER FOR KEYSTONE STYLE PANEL OPENING REQUIREMENTS

** Denotes jack module color code.

WIRING SEQUENCES

CATEGORY 5E NK5E88 SERIES WIRING SEQUENCES

WIRING DIAGRAM



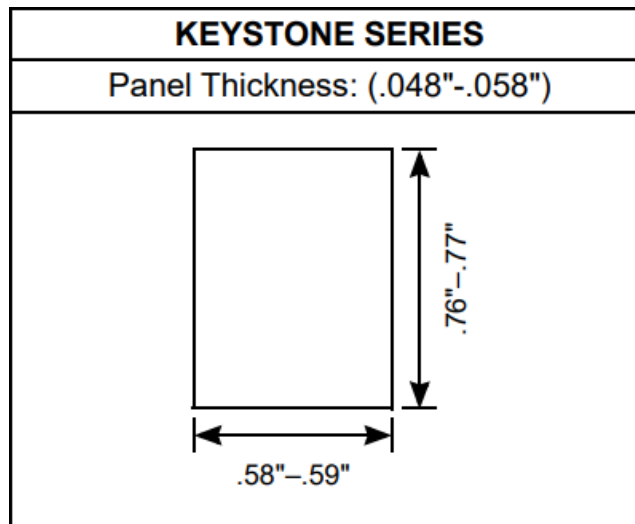
“Category 5E” Keystone Style Jack Modules Color-Coded Wire Positions

| T568A, ISDN | | | T568B, AT&T 258A, WECO | | |
|-------------|--------------|----|------------------------|--------------|----|
| 2 | GREEN | R3 | 2 | ORANGE | R2 |
| 1 | WHITE/GREEN | T3 | 1 | WHITE/ORANGE | T2 |
| 3 | WHITE/ORANGE | T2 | 3 | WHITE/GREEN | T3 |
| 5 | WHITE/BLUE | T1 | 5 | WHITE/BLUE | T1 |
| 4 | BLUE | R1 | 4 | BLUE | R1 |
| 6 | ORANGE | R2 | 6 | GREEN | R3 |
| 8 | BROWN | R4 | 8 | BROWN | R4 |
| 7 | WHITE/BROWN | T4 | 7 | WHITE/BROWN | T4 |

Refer to catalog for a listing of color-coded NetKey Keystone Style Jack Modules.

KEYSTONE STYLE PANEL OPENING REQUIREMENTS

PANEL OPENING REQUIREMENTS



Notes:

1. For specified performance, follow TIA/EIA 568A installation guidelines and use equivalent or higher category twisted pair cable.
2. Keystone Style Jack Modules can terminate PVC or Plenum rated 22-24 AWG solid or stranded IWC cable with 0.048 inch (1.2mm) maximum insulated conductor outside diameter.
3. Keystone Style Jack Modules may be reterminated a minimum of 10 times.
4. For technical and performance data, refer to catalog or consult Panduit Technical Support.

As with all Wiring Accessories, the following statements apply:

1. Never install communications wiring during a lightning storm.
2. Never install communications wiring in wet locations unless the jack is specifically designed for use in wet locations.
3. Never touch uninsulated communications wiring or terminals unless the communication line has been disconnected at the network interface.
4. Use caution when installing or modifying communication wiring.

Contact

- For Instructions in Local Languages and Technical Support:

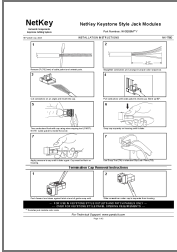
www.panduit.com/resources/install_maintain.asp

- E-mail: techsupport@panduit.com

- Phone: [866-405-6654](tel:866-405-6654)

- www.panduit.com

Documents / Resources



[PANDUIT NK5E88M Series NetKey Keystone Style Jack Modules](#) [pdf] Installation Guide
NK5E88M Series NetKey Keystone Style Jack Modules, NK5E88M Series, NetKey Keystone St
yle Jack Modules, Keystone Style Jack Modules, Style Jack Modules, Jack Modules, Modules

References

- [User Manual](#)

[Manuals+](#), [Privacy Policy](#)

This website is an independent publication and is neither affiliated with nor endorsed by any of the trademark owners. The "Bluetooth®" word mark and logos are registered trademarks owned by Bluetooth SIG, Inc. The "Wi-Fi®" word mark and logos are registered trademarks owned by the Wi-Fi Alliance. Any use of these marks on this website does not imply any affiliation with or endorsement.