



# Panduit F8BNM\*\*BNS FlexCore ODF Front Access 288 Fiber Tethered Universal Enclosure Instruction Manual

[Home](#) » [PANDUIT](#) » Panduit F8BNM\*\*BNS FlexCore ODF Front Access 288 Fiber Tethered Universal Enclosure Instruction Manual 

## Contents

- [1 Panduit F8BNM\\*\\*BNS FlexCore ODF Front Access 288 Fiber Tethered Universal Enclosure Instruction](#)
- [2 Product Information](#)
- [3 INSTALLATION INSTRUCTIONS](#)
- [4 Installation of Boxed Assemblies](#)
- [5 Installation of Spooled Assemblies](#)
- [6 Correlation Between Bare Ribbon Blunt End and Tethered Cassettes](#)
- [7 Existing Panduit FlexCore™ Installation Instructions](#)
- [8 Documents / Resources](#)
  - [8.1 References](#)
- [9 Related Posts](#)

# PANDUIT

**Panduit F8BNM\*\*BNS FlexCore ODF Front Access 288 Fiber Tethered Universal Enclosure Instruction**



## Product Information

### FlexCore™ ODF Front Access 288 Fiber Tethered Universal Enclosure Specifications:

- Part Number(s): F8BNM\*\*BNS\*\*\*\*\*
- Installation Instructions: FS202

### Installation of Boxed Assemblies [Less than or equal to 100ft (30m)]

1. Open up the box and remove the foam to reveal the cable.
  - Be careful when opening the box to not cut the cable while opening the box.
2. Remove all strips of Tak-Ty holding together the coil of cable.
3. Unspool approximately 10ft. (3m) of cable and place it off to the side of the box.
4. Remove the outer cardboard shell to reveal the enclosure and foam end caps.
  - Remove the two foam blocks located behind the enclosure.
5. Remove the enclosure from the cardboard sleeve and remove the end caps from the outer box.
6. Manually unspool the cable to the location where splicing will occur.
  - Keep an eye on the cable transition to confirm that the cable is not twisting while being unspooled.
7. Remove the endcaps.
8. Remove the sleeve.
9. Install the enclosure into the frame using the methods discussed in FS203.
10. Attach the cable transition to the correct location on the ingress/egress plates on the 150mm vertical cable manager per FS206, Section 4.
  - Secure the cable transition with a cable tie around it.
11. If needed, pull out every tray in the enclosure to ensure there is enough slack for the tray to move without putting extra stress on fibers.
12. If any cassette needs to be inspected individually, they can be removed from the tray as explained in FS203.

## FAQ (Frequently Asked Questions)

- Q: How do I install boxed assemblies that are less than or equal to 100ft (30m)?

A: Follow the steps outlined in section 1 of the installation instructions. Make sure to be careful when opening the box to avoid cutting the cable.

- Q: How do I unspool the cable?

A: Unspool approximately 10ft (3m) of cable and place it off to the side of the box. Keep an eye on the cable transition to ensure it doesn't twist while being unspooled.

- Q: How do I attach the cable transition to the vertical cable manager?

A: Refer to FS206, Section 4 for instructions on attaching the cable transition to the correct location on the ingress/egress plates using a cable tie.

## INSTALLATION INSTRUCTIONS

**NOTE:** The following installation instruction shows pictures of a left-tethered enclosure. A right-tethered enclosure is also an option and would be installed in the same manner, but with the 150mm vertical cable manager located to the right of the enclosure.

**Disclaimer:** The information contained in this manual is intended as a guide for use by persons having technical skill at their own discretion and risk. The recommended practices are based on average conditions. Panduit makes no representation or warranty, express or implied, nor assumes any responsibility for the accuracy or completeness of these installation instructions. Panduit does not guarantee any favorable results nor assume any liability for damages, improper installation, system failures, or any other problems that could arise in connection with the use of these installation instructions

### Installation of Boxed Assemblies

**[Less than or equal to 100ft (30m)] Open up the box and remove the foam to reveal cable.**

- Be careful when opening the box to not cut the cable while opening the box

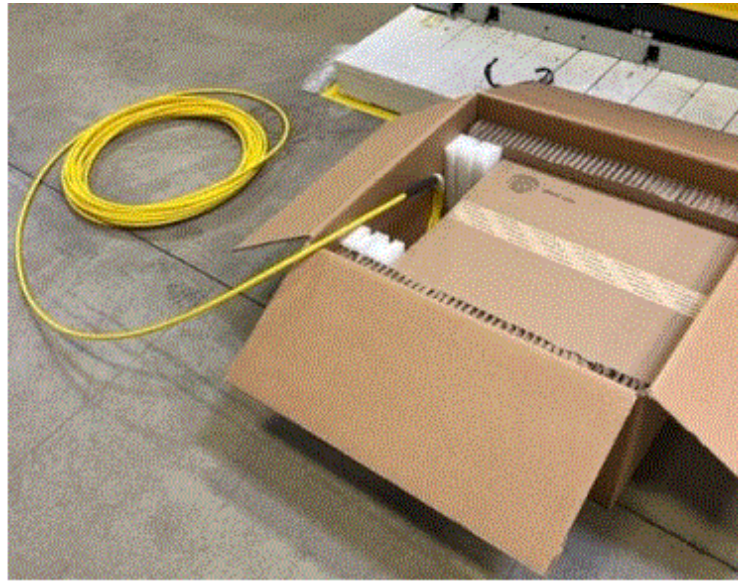


- Remove all strips of Tak-Ty holding together coil of cable

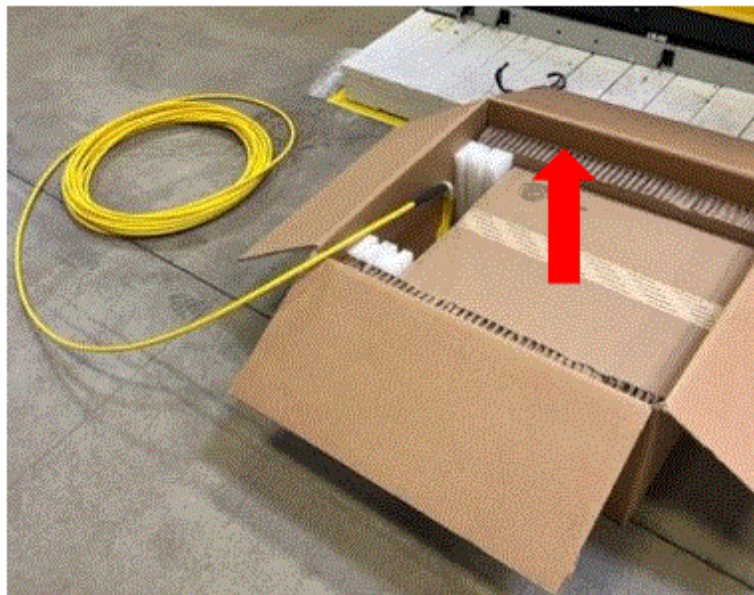




- Unspool ~10ft. (3m) of cable and place off to side of box

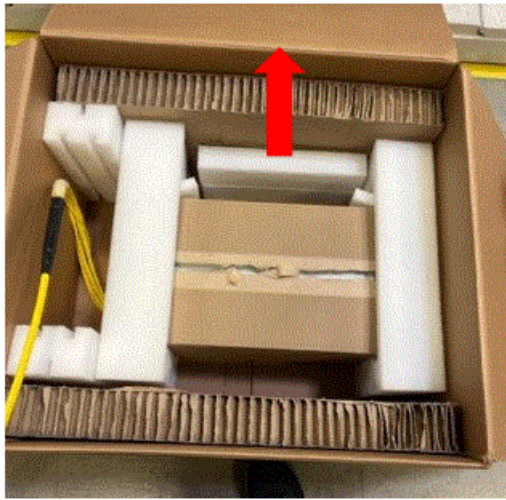


- Remove the outer cardboard shell to reveal the enclosure and foam end caps

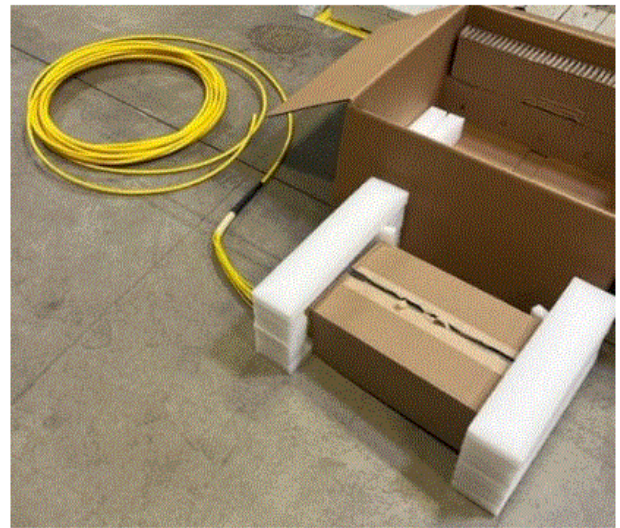
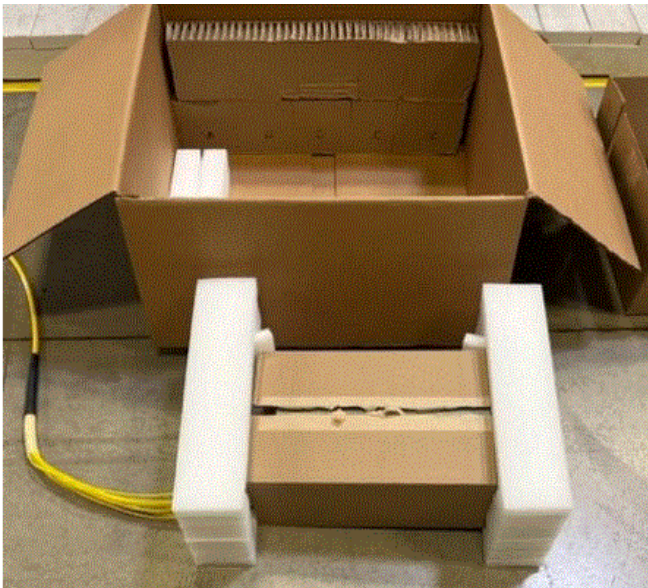


- Remove 2 foam blocks located behind enclosure

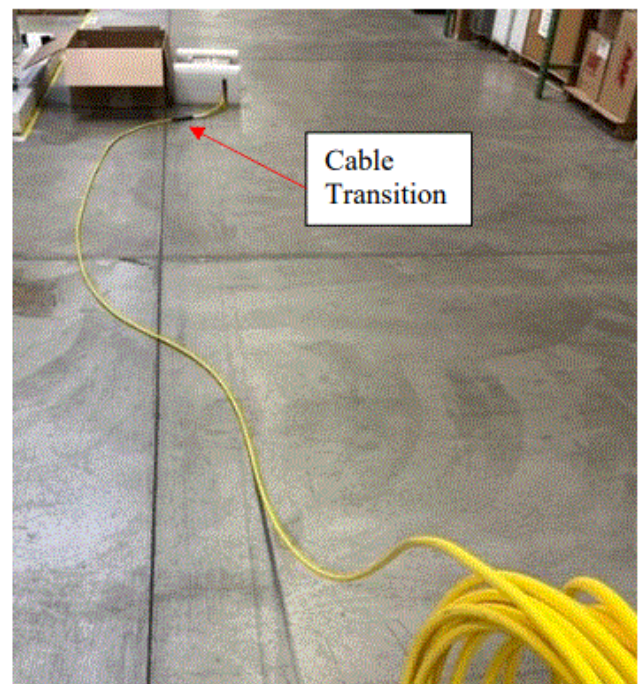
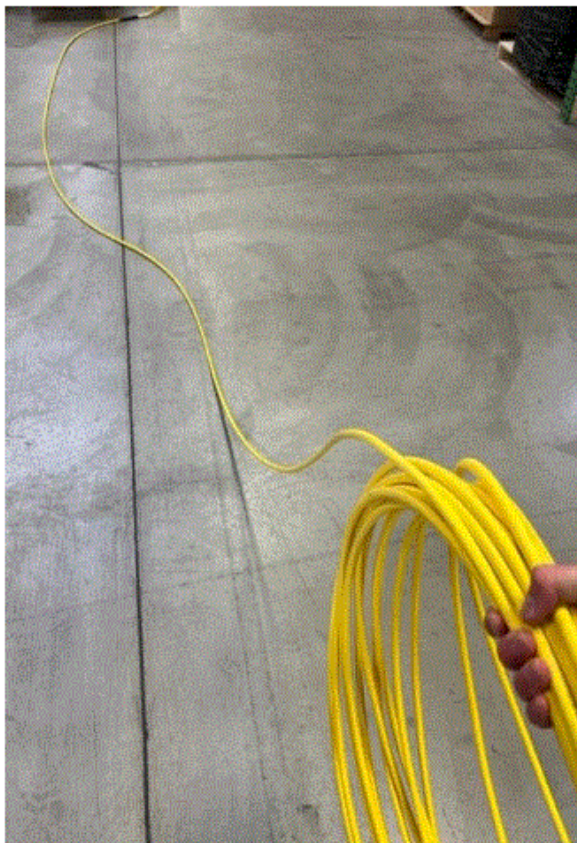




- Remove enclosure in cardboard sleeve, and end caps from outer box.

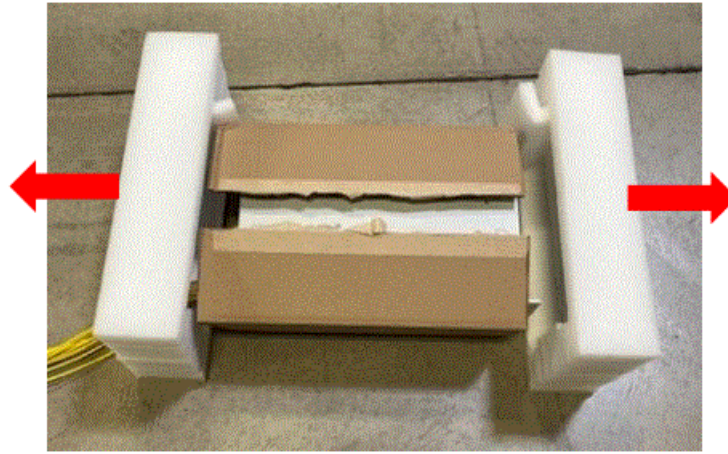


- Manually unspool cable to location where splicing will occur.
  - Keep an eye on the cable transition to confirm the cable is not twisting while being unspooled.

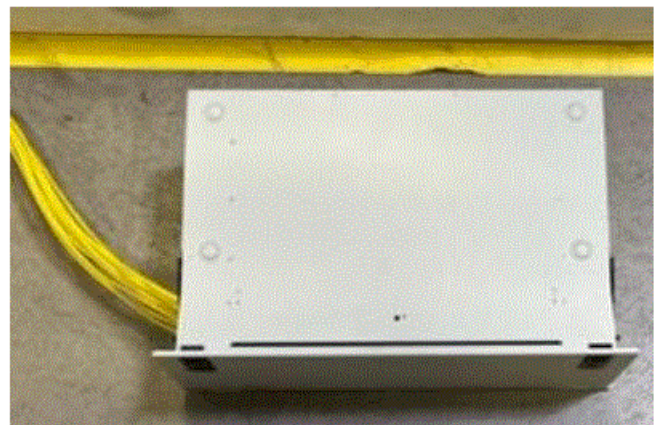




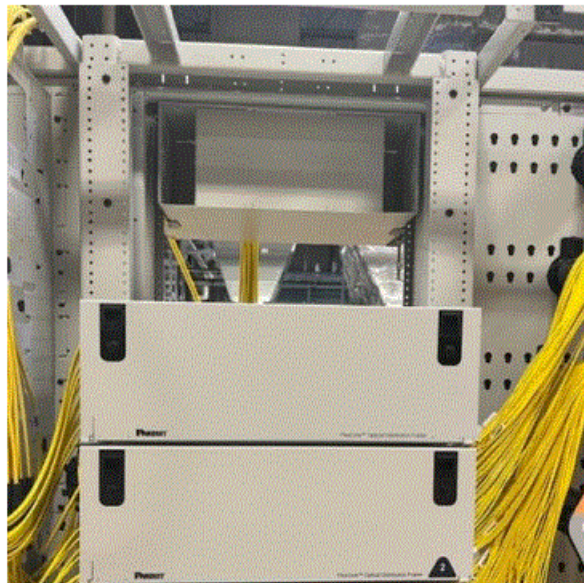
- Remove Endcaps



- Remove sleeve

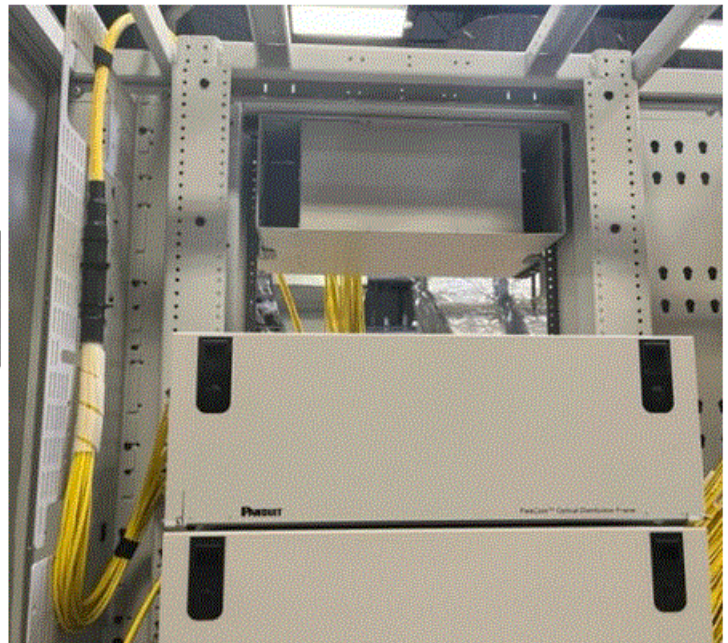
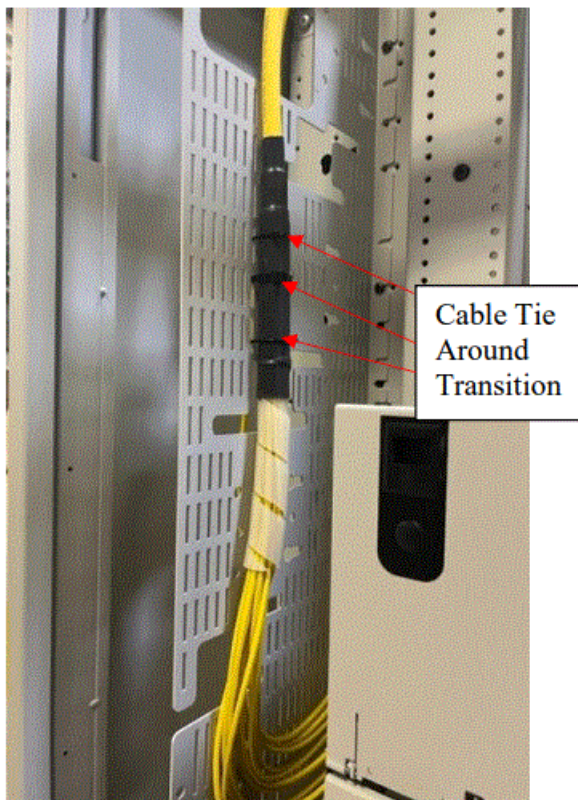


- Install enclosure into frame using methods discussed in FS203.

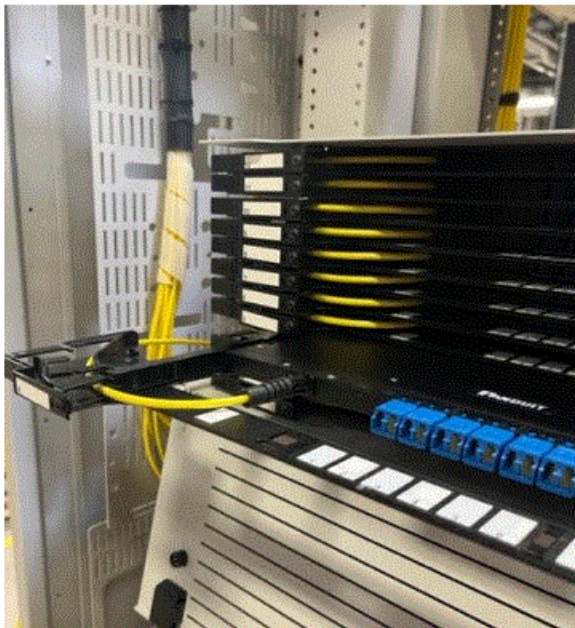


- Attach cable transition to correct location on ingress/egress plates on the 150mm vertical cable manager per FS206, Section 4.





- If needed, pull out every tray in the enclosure to ensure there is enough slack for the tray to move without putting extra stress on fibers.



- If any cassette wants to be inspected individually, they can be removed from the tray as explained in FS203.





- Installation of Boxed Assemblies [Less than or equal to 100ft (30m)] is Complete!

### **Installation of Spooled Assemblies**

**[From 101ft (31m) to 240ft (73m)] Product will arrive on a pallet**

- 1 enclosure and spool per pallet
- 



Remove plastic shrink wrap from around pallet and enclosure. Note: Be careful to not damage cable when removing shrink wrap





- Cut strapping holding down enclosure and spool



- Remove bag protecting enclosure and spool



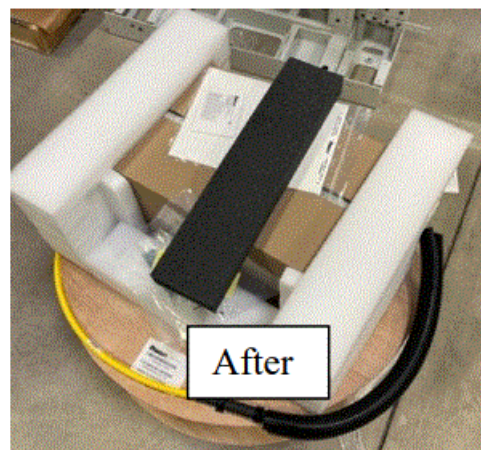
- Remove (4) screws holding spool onto pallet



- Move spool off of pallet and discard pallet accordingly

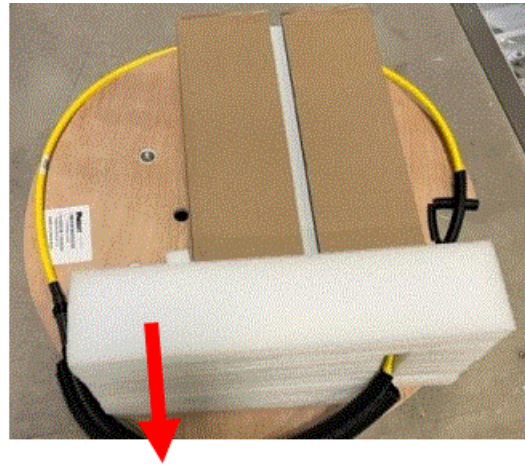


- Slide cardboard box up and off enclosure

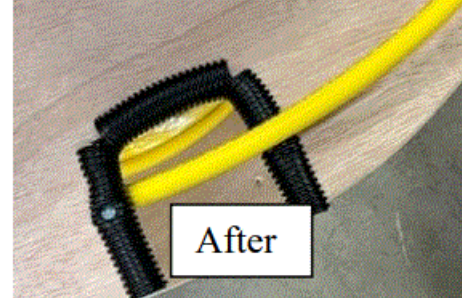
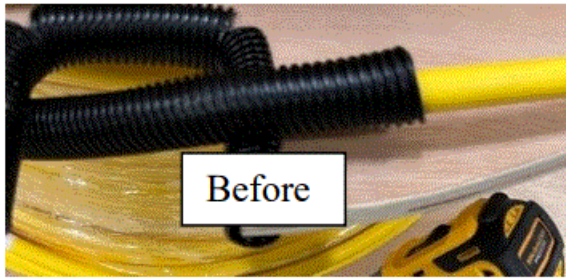


- Remove both foam end caps

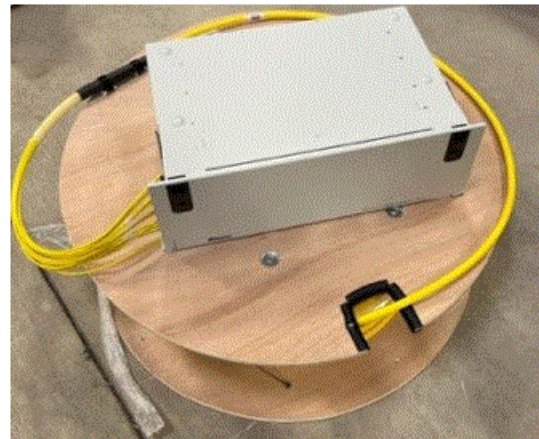
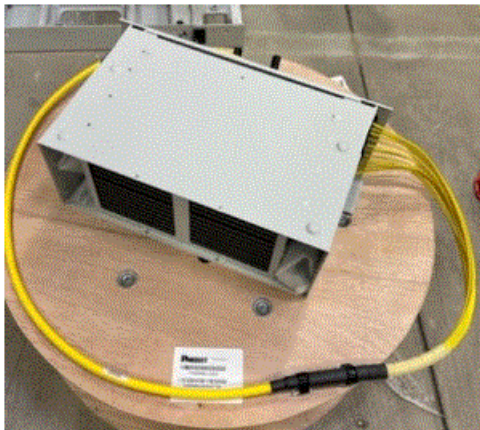




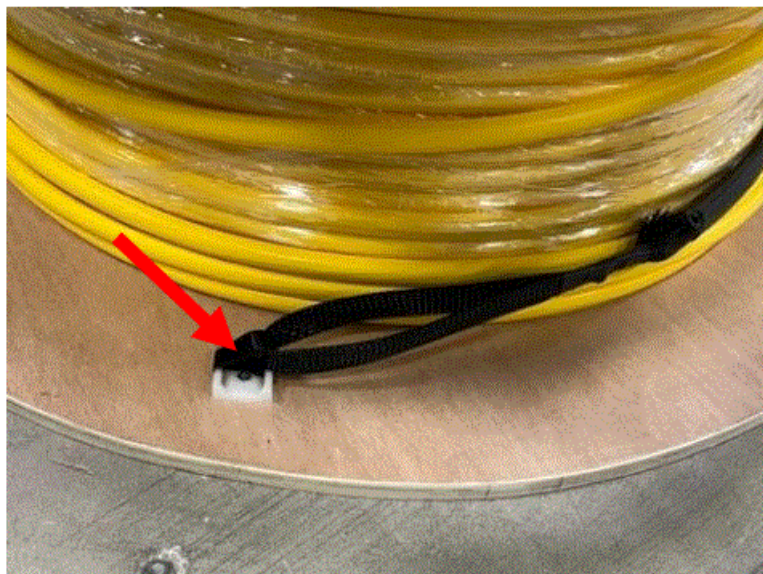
- Remove the corrugated tubing located on the cable in the slot in the spool



- Remove cardboard sleeve around enclosure

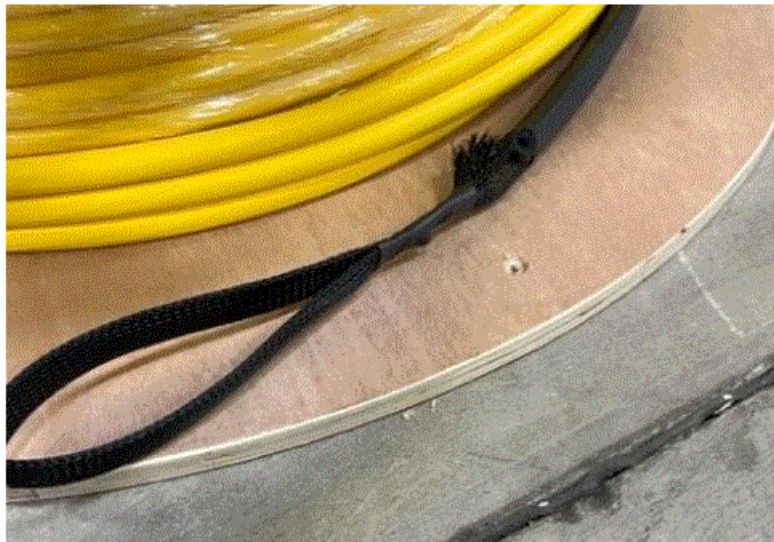


- Undo Tak-ty that is holding pulling eye to plastic harness

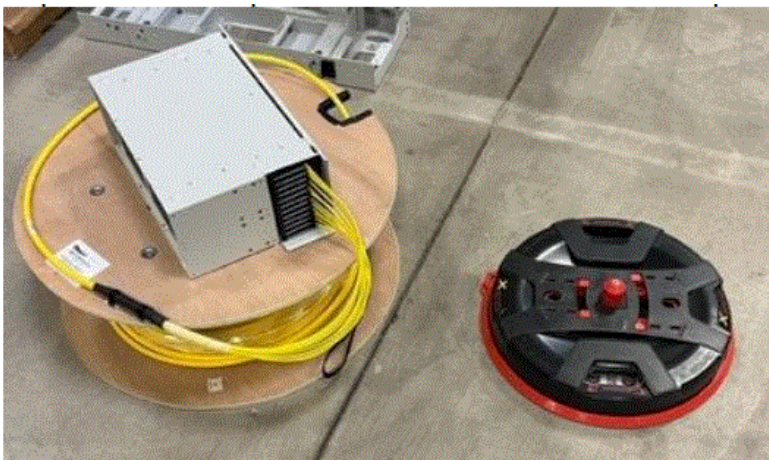


- Remove plastic harness by loosening the screw which holds it to spool

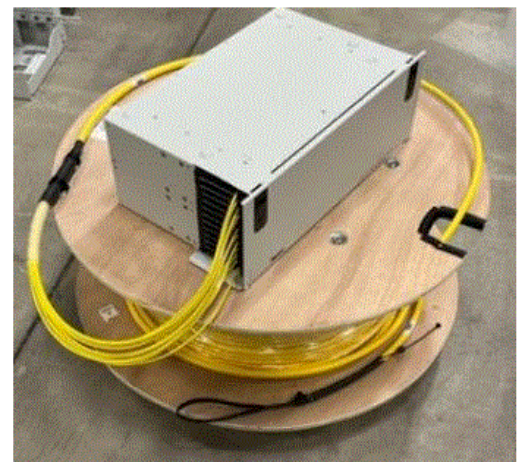




- Place the spool with enclosure on top onto a horizontal cable dereeler. Contact your Panduit representative for possible horizontal cable dereeler options if needed.

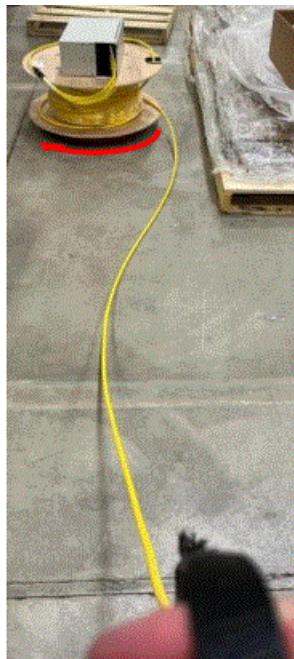


Before

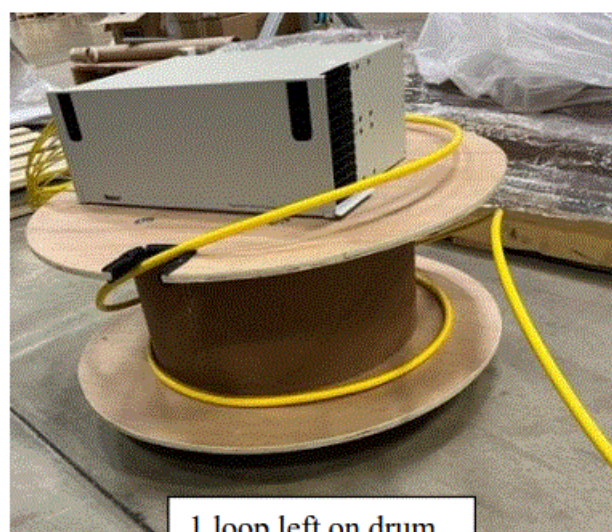


After: Spool placed on dereeler

- Unspool cable using pulling eye until 1 loop of cable is left on drum



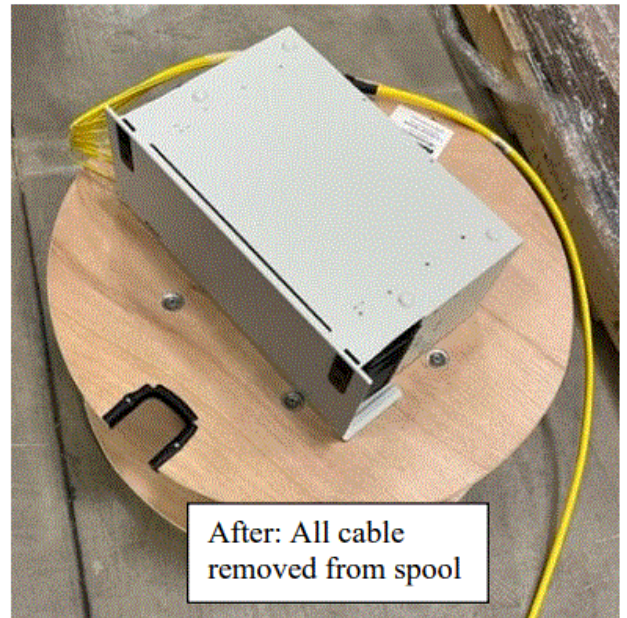
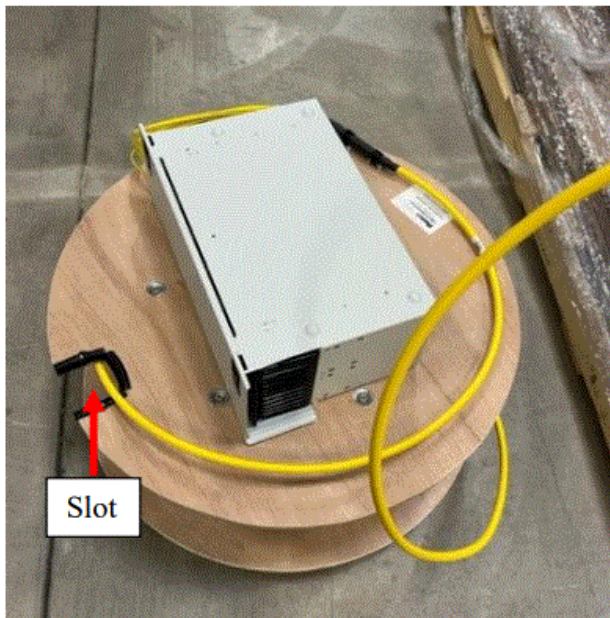
Unspooling with pulling eye



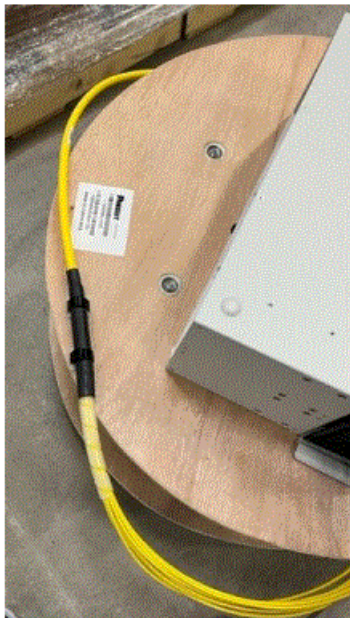
1 loop left on drum

- Unspool last loop manually and fish through the slot on the spool

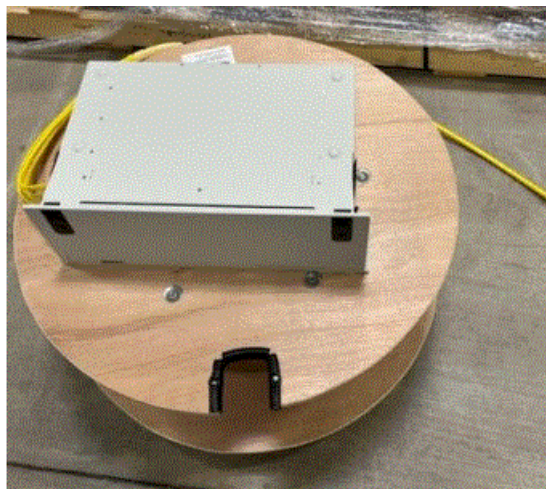




- Remove Tak Ty holding cable transition to spool

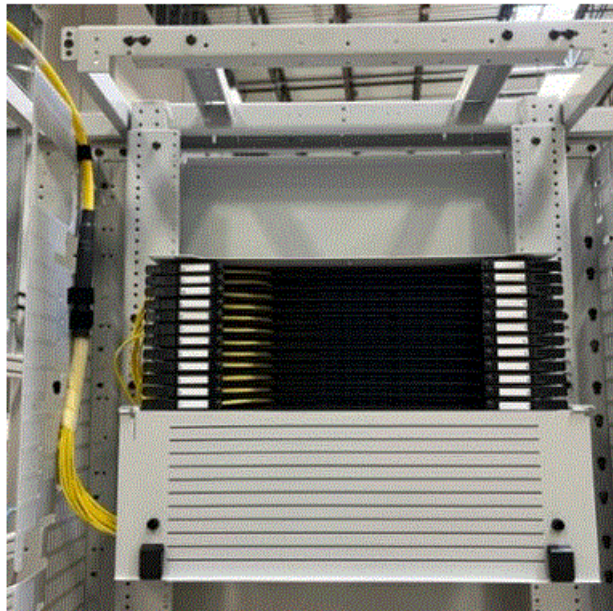


- Now cable and enclosure are completely free of spool!



- Follow Steps 1.10. to 1.13. to complete installation of enclosure in ODF FlexCore™ Frame

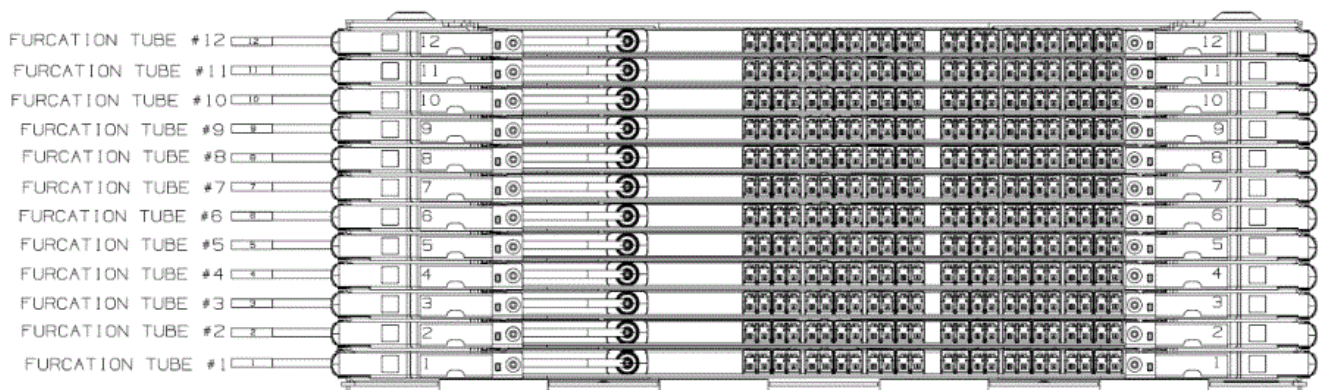




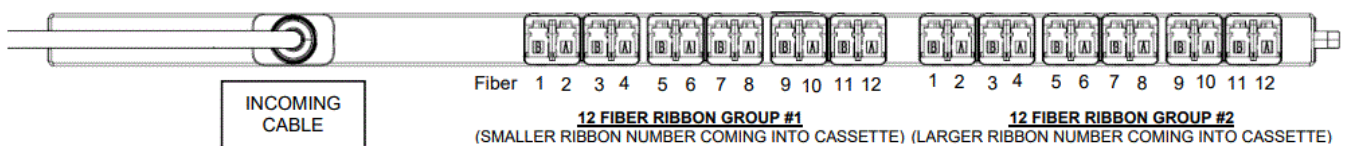
- Installation of Spooled Assemblies [From 101ft (31m) to 240ft (73m)] is complete!

## Correlation Between Bare Ribbon Blunt End and Tethered Cassettes

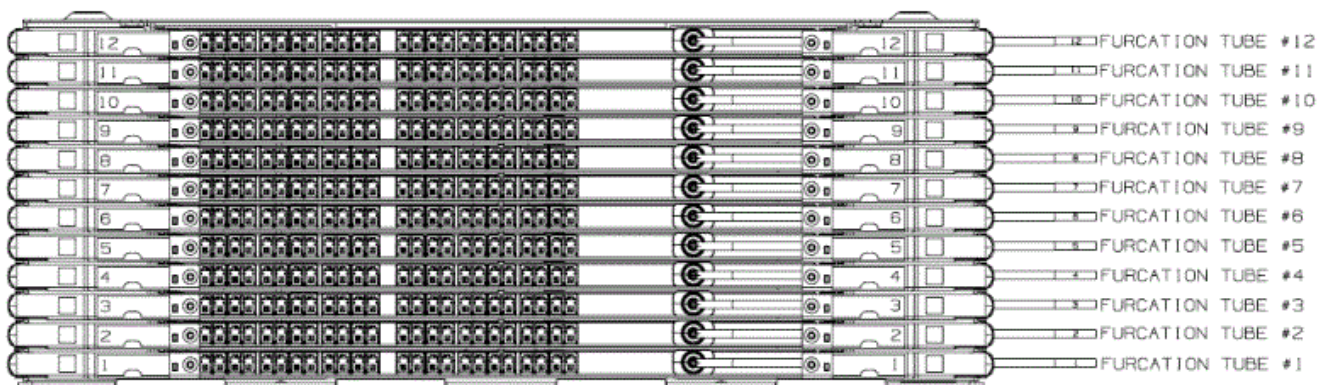
### TETHERED LEFT ENCLOSURE LAYOUT



### TETHERED LEFT CASSETTE STANDARD POLARITY



### TETHERED RIGHT ENCLOSURE LAYOUT



### TETHERED RIGHT CASSETTE STANDARD POLARITY





Fiber 1 2 3 4 5 6 7 8 9 10 11 12 1 2 3 4 5 6 7 8 9 10 11 12

**12 FIBER RIBBON GROUP #1** **12 FIBER RIBBON GROUP #2**

(SMALLER RIBBON NUMBER COMING INTO CASSETTE) (LARGER RIBBON NUMBER COMING INTO CASSETTE)

INCOMING  
CABLE

FIBER COLOR KEY	
FIBER 1 - BLUE	FIBER 7 - RED
FIBER 2 - ORANGE	FIBER 8 - BLACK
FIBER 3 - GREEN	FIBER 9 - YELLOW
FIBER 4 - BROWN	FIBER 10 - VIOLET
FIBER 5 - SLATE	FIBER 11 - ROSE
FIBER 6 - WHITE	FIBER 12 - AQUA


Furcation Tube #	Row on Enclosure	Ribbons Inside Cassette	Group of LC Adapters on Front of Cassette	Symbols on Flexible Ribbon on Blunt End
12	12	23	1 (Left Most)	■ ■ ■ ■
		24	2 (Right Most)	■ ■ ■ ■
11	11	21	1 (Left Most)	■ ■ ■ ■
		22	2 (Right Most)	■ ■ ■ ■
10	10	19	1 (Left Most)	■ ■ ■
		20	2 (Right Most)	■ ■ ■ ■
9	9	17	1 (Left Most)	■ ■ ■
		18	2 (Right Most)	■ ■ ■
8	8	15	1 (Left Most)	■ ■ ■
		16	2 (Right Most)	■ ■ ■
7	7	13	1 (Left Most)	■ ■
		14	2 (Right Most)	■ ■
6	6	11	1 (Left Most)	■ ■
		12	2 (Right Most)	■ ■
5	5	9	1 (Left Most)	■
		10	2 (Right Most)	■ ■
4	4	7	1 (Left Most)	■
		8	2 (Right Most)	■
3	3	5	1 (Left Most)	■
		6	2 (Right Most)	■
2	2	3	1 (Left Most)	
		4	2 (Right Most)	
1	1	1	1 (Left Most)	
		2	2 (Right Most)	

## Existing Panduit FlexCore™ Installation Instructions

Installation Instruction Number	Panduit Part Number	Description
FS187	FOBKF**(Y/A)M1	Fiber Breakout Kit, Flat Ribbon Furcation Tube
FS190	FDF45**	FlexCore™ Optical Distribution Frame
FS191	FDVCM1545**	FlexCore™ 150mm Vertical Cable Manager
FS192	FDVCM3045**	FlexCore™ 300mm Vertical Cable Manager
FS193	FDFD**45*X**	FlexCore™ Single Hinge Front Doors
FS194	FDFEP45**	FlexCore™ End Panels
FS198	FDUSP	FlexCore™ Fiber Spool
FS199	FDUSP6	FlexCore™ Fiber Spool 6-pack Color Coordinated Kit
FS200	FDS**-24-***	FlexCore™ Fusion Splice Cassette - Cable to LC Adapter
FS201	FDSN-24	FlexCore™ Fusion Splice Cassette - Cable to Cable
FS203	FDFUE4**	FlexCore™ 4RU Universal Enclosure
FS204	N/A	FlexCore™ Front Access Optical Distribution Frame Patchcord Routing Guide
FS205	FDFRC45**	FlexCore™ Frame Rear Panel
FS206	N/A	FlexCore™ Front Access Ingress/Egress Cabling Guide

For Technical Support: [www.panduit.com/resources/install\\_maintain.asp](http://www.panduit.com/resources/install_maintain.asp)

## Documents / Resources

	<p><b><a href="#">Panduit F8BNM**BNS FlexCore ODF Front Access 288 Fiber Tethered Universal Enclosure</a> [pdf] Instruction Manual</b></p> <p>F8BNM BNS FlexCore ODF Front Access 288 Fiber Tethered Universal Enclosure, F8BNM BN S, FlexCore ODF Front Access 288 Fiber Tethered Universal Enclosure, 288 Fiber Tethered Universal Enclosure, Tethered Universal Enclosure, Universal Enclosure</p>
---	---

## References

- [User Manual](#)