



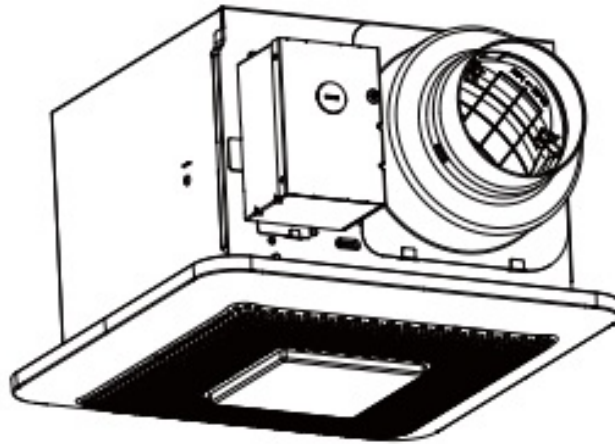
Panasonic RG-C811LHA Whisper Choice DC with LED Light and Humidity Sensor User Manual

[Home](#) » [Panasonic](#) » Panasonic RG-C811LHA Whisper Choice DC with LED Light and Humidity Sensor User Manual 

Contents

- [1 Panasonic RG-C811LHA Whisper Choice DC with LED Light and Humidity Sensor User Manual](#)
- [2 WARNING](#)
- [3 IMPORTANT SAFETY NOTICE](#)
- [4 Specification](#)
- [5 Parts Identification](#)
 - [5.1 Main Body Section](#)
- [6 Main PCB Section](#)
- [7 Main Label](#)
- [8 Packing Section](#)
- [9 Wiring Diagram](#)
- [10 4. Parts List](#)
- [11 Main Label](#)
- [12 Read More About This Manual & Download PDF:](#)
- [13 Documents / Resources](#)

Panasonic RG-C811LHA Whisper Choice DC with LED Light and Humidity Sensor User Manual

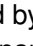


WARNING

This service information is designed for experienced repair technicians only and is not designed for use by the general public. It does not contain warnings or cautions to advise non-technical individuals of potential dangers in attempting to service a product. Products powered by electricity should be serviced or repaired only by experienced professional technicians. Any attempt to service or repair the product or products dealt with in this service information by anyone else could result in serious injury or death.

IMPORTANT SAFETY NOTICE



There are special components used in this equipment which are important for safety. These parts are marked by  in the Schematic Diagrams, Exploded Views and Replacement Parts List. It is essential that these critical parts should be replaced with manufacturer's specified parts to prevent shock, fire or other hazards. Do not modify the original design without the manufacturer's approval. Please have a static electricity depletion process in place before handling these components.. Please use gloves when handling PCB parts during the repair process..

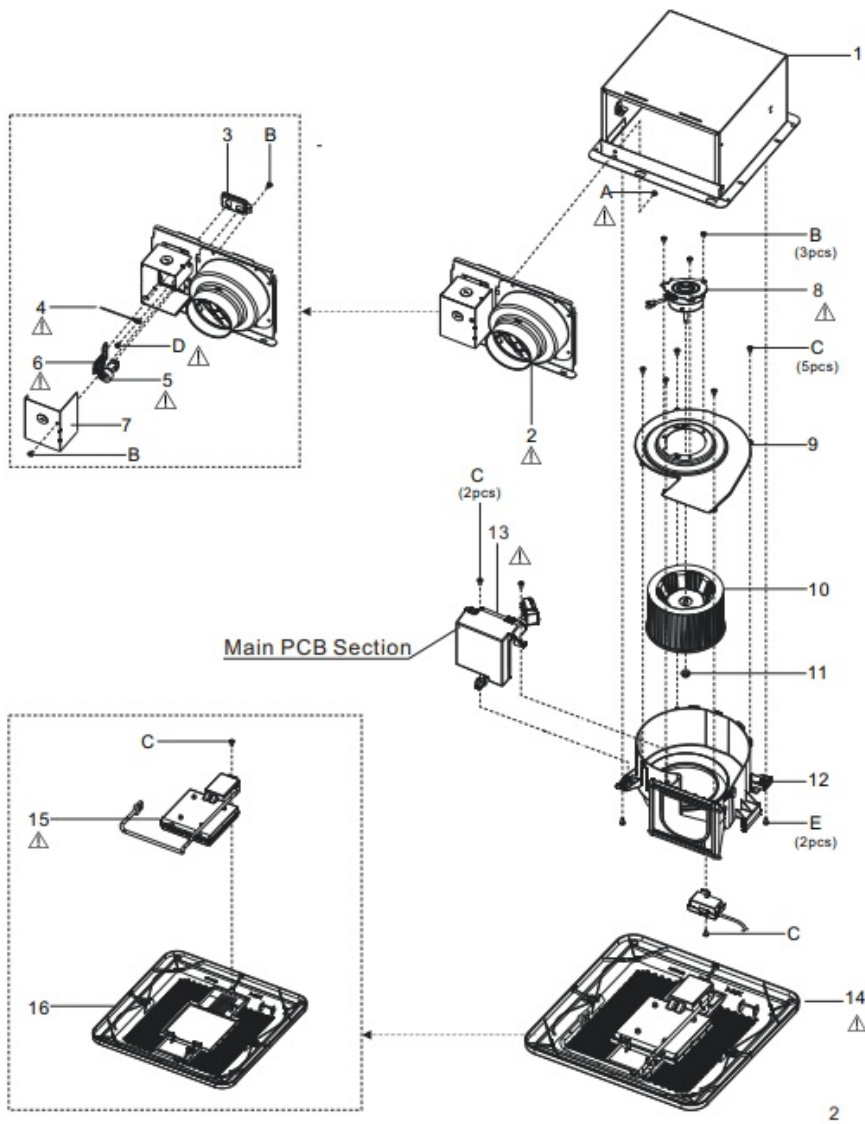
Specification

Model No.	Air direction	Voltage (V)	Frequency (Hz)	Duct diameter (inches)	Air volume (CFM)	Noise (sones)	Speed (rpm)	Power (W)	Weight lb. (kg)
RG-C811LHA	Exhaust	120	60	4 or 6	80	<0.3	824	6.5	10.1(4.6)
					110	0.5	984	11.1	

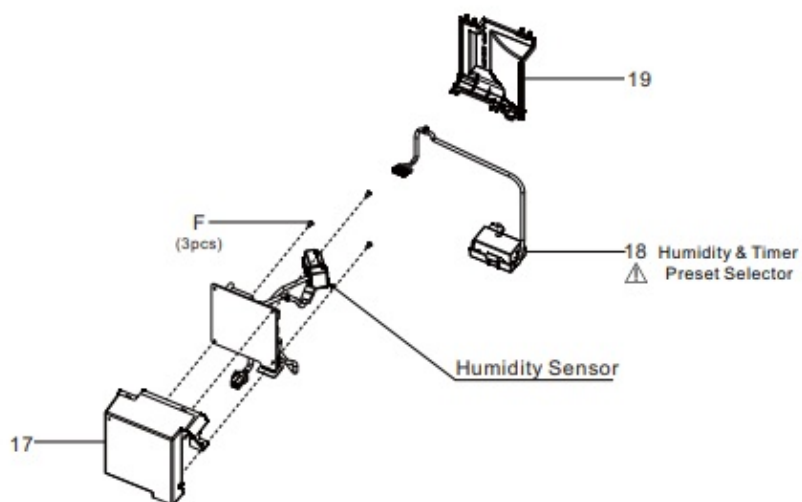
HVI Certified performance based on HVI Procedures 915, 916, 920 at 0.1" WG.

Parts Identification

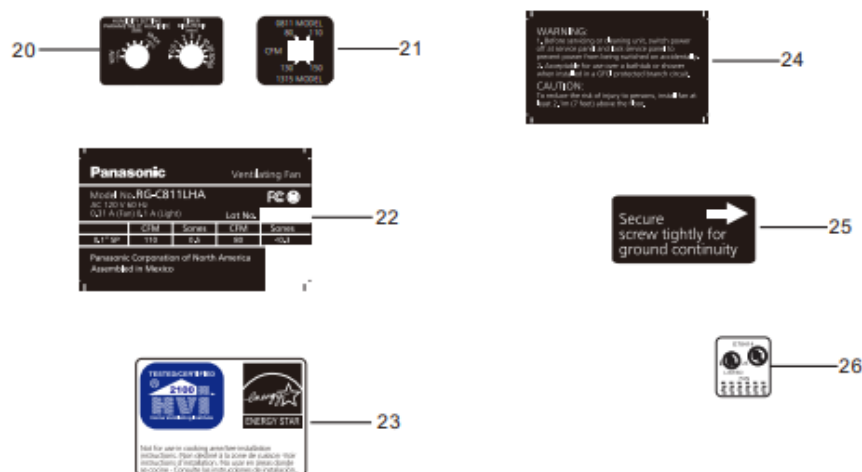
Main Body Section



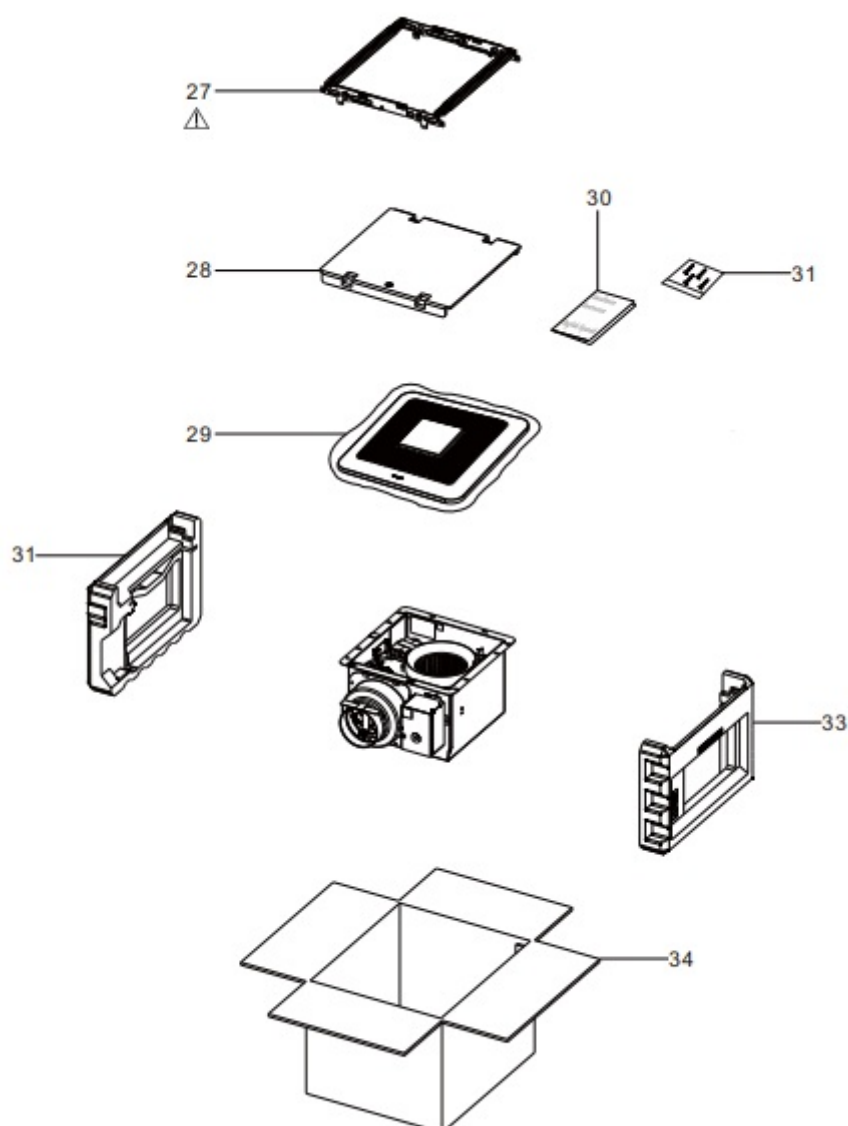
Main PCB Section



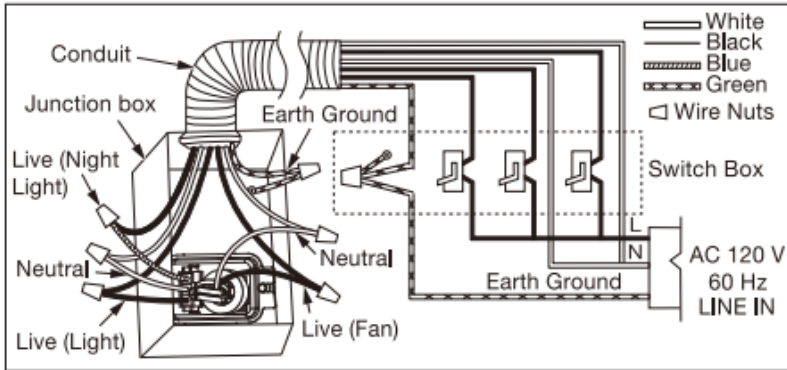
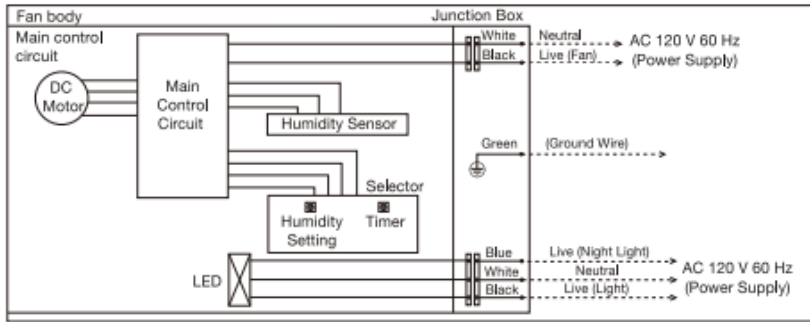
Main Label



Packing Section



Wiring Diagram



4. Parts List

Main Body Section

No.	Part No.	Part Name	Q'ty	Remark
1	FFVC811LH900	Frame Assembly	1	
2	FFV11QCL1910	Adapter Assembly	1	
3	FFV11QCL1913	Connector Plate	1	
4	FFV11QCL1331	Ground Wire	1	
5	FFV11QCL1301A	Connector Assy	1	
6	FFV11QCL1341A	Connector Assy (L)	1	
7	FFV11QCL1912A	Junction Cover	1	
8	FFV11QCL1M21AX	Motor	1	

9	FFV11QCL1904C	Motor Support Assy	1	
10	FFV0400114S	Blade	1	
11	FFV7020021S	Nut	1	
12	FFV11QCL1906B	Casing Section	1	
13	FFV811HAPCB	Main PCB section	1	
14	FFVC811LH810	Grill Assembly	1	
15	FFV11QCL1070	Led Unit	1	
16	FFVC811LH811	Grill Section	1	
A	FFVXYM4-E8FJ	Screw (M4-8)	1	
B	FFVXTT4-8FFJ	Screw (ST4-8)	5	
C	FFV7000089S	Screw (ST4-12)	8	
D	FFVXYM4DC8BN	Screw w/washer(M4-8)	1	
E	FFV7000065S	Screw (M4-12)	2	

Main PCB Section

No.	Part No.	Part Name	Q'ty	Remark
17	FFVC811LH991	Main PCB Box	1	
18	FFV11QCL1560	Humidity & Timer Preset Selector	1	
19	FFV11QCL1992C	Main PCB Cover	1	
F	FFVXTN3-8GFJ	Screw (M3-8)	3	

Main Label

No.	Part No.	Part Name	Q'ty	Remark
20	FFV11QCL1011A	Switch Label	1	
21	FFV811LH112	Speed Switch Label	1	
22	FFVC811LH15	Name Plate	1	
23	FFV0810011S	Caution Label 1	1	
24	FFV811LH183	Caution Label	1	
25	FFV811LH152	Warning Label	1	
26	FFV2260003S	Holograph Label	1	

Packing Section

No.	Part No.	Part Name	Q'ty	Remark
27	FFV11QCL1920	Hanger Assy	1	
28	FFV4710381S	Grill Pad Assy	1	
29	FFV4650016S	Poly Cover	1	
30	FFVC811LH42	Installation Inst	1	English / Spanish For USA Market
31	FFV11KSL1M031A	Accessory A	1	
32	FFV11QCL1891	Left Pad	1	
33	FFV11QCL1892	Right Pad	1	
34	FFVC811LH400	Packing Case Assy	1	

Read More About This Manual & Download PDF:

Documents / Resources

