



# Panasonic Lumix GH5M2 Live Streaming Camera Settings User Guide

[Home](#) » [Panasonic](#) » Panasonic Lumix GH5M2 Live Streaming Camera Settings User Guide 

## Contents

- [1 Panasonic Lumix GH5M2 Live Streaming Camera Settings](#)
- [2 LIVE STREAMING SETTING](#)
  - [2.1 Preparation when using a smartphone](#)
  - [2.2 Streaming with YouTube LIVE](#)
  - [2.3 Streaming with Facebook LIVE](#)
  - [2.4 Live streaming by operating the camera](#)
- [3 Documents / Resources](#)
  - [3.1 References](#)
- [4 Related Posts](#)

# Panasonic

## Panasonic Lumix GH5M2 Live Streaming Camera Settings



- Live streaming preparation/settings
- Pairing your camera and smartphone
- Live streaming settings using a smartphone
- Live streaming settings using a PC and SD memory card

## LIVE STREAMING SETTING

### ADVANCE PREPARATION FOR LIVE STREAMING

#### Preparation when using a smartphone

##### ■ GH5II



❗ Check the remaining battery level of your camera!



##### ■ Smartphone



Install the "LUMIX Sync" smartphone app

\*Turn Bluetooth ON.

❗ Check the remaining battery level and connection status of your smartphone!

- Supported OS (as of September 2021) Android™: 7.0 or later  
(The Bluetooth® function requires your device to use Android 5.0 or later and Bluetooth 4.0 or later. Excluding some models that are not compatible with Bluetooth Low Energy.), iOS: 12 or later.
- Android is a trademark or registered trademark of Google Inc.
- App Store is a service mark of Apple Inc.

#### Check FAQs

Frequently asked questions from customers are introduced at the LUMIX Customer Support page.

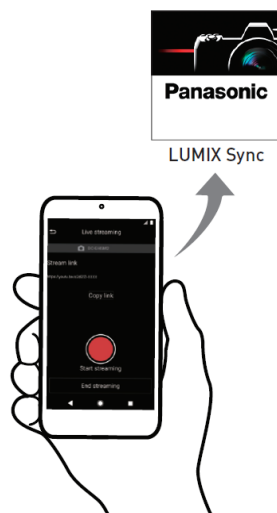
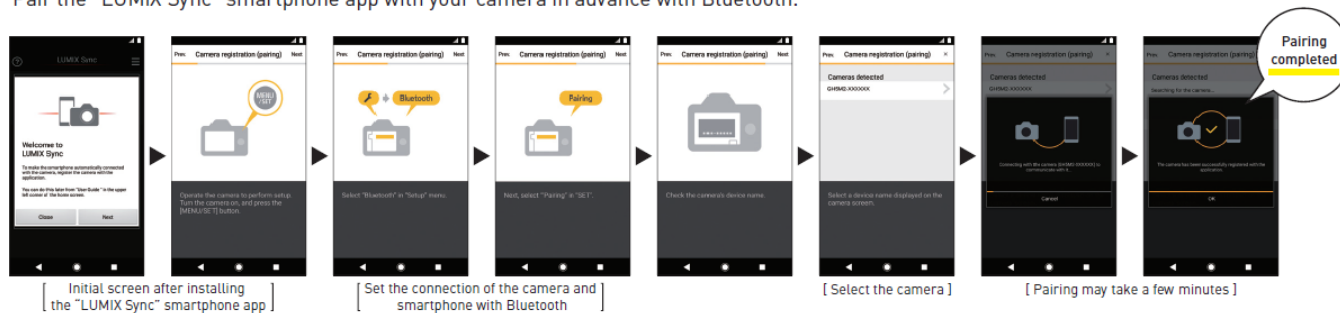
[https://panasonic.jp/support/global/cs/dsc/faq/dc\\_gh5m2/index.html](https://panasonic.jp/support/global/cs/dsc/faq/dc_gh5m2/index.html)



#### Connect your camera and smartphone

Pair the "LUMIX Sync" smartphone app with your camera in advance with Bluetooth.

Pair the “LUMIX Sync” smartphone app with your camera in advance with Bluetooth.



THREE WAYS to live stream using the “LUMIX Sync” smartphone app

### Streaming with RTMP/RTMPS

Setting method for live streaming using stream URL and stream key. In addition to YouTube and Facebook, it is possible to configure settings with various social streaming platforms that are compatible with RTMP/RTMPS.

- When you wish to schedule a post or if you have less than 1,000 subscribers on YouTube, connect with RTMP/RTMPS.

### Streaming with YouTube LIVE

This is a setting method to easily conduct live streaming by logging into your YouTube account so that you can omit inputs such as stream key.

#### Caution

Due to YouTube’s Terms of Service, this setting is only possible if you have over 1,000 subscribers.

### Streaming with Facebook LIVE

This is a setting method to easily conduct live streaming by logging into your Facebook account so that you can omit inputs such as stream key.

- Live streaming to the platforms that comply with RTMP/RTMPS is basically possible (Compatibility with all the

platforms is not guaranteed.) There may be the cases where the live streaming is not possible when the service of the platform changes. For more information, please refer to the terms and conditions of the platform.

- YouTube” and the “YouTube logo” are registered trademarks of Google Inc. •Facebook” is a registered trademark of Facebook, Inc

Check



Check



Check



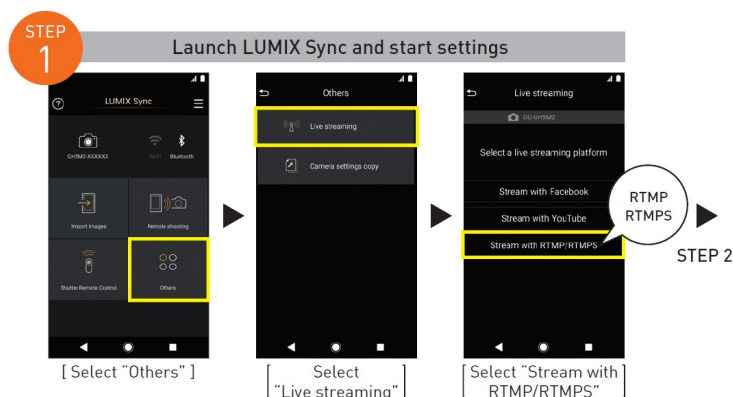
## Streaming with RTMP/RTMPS




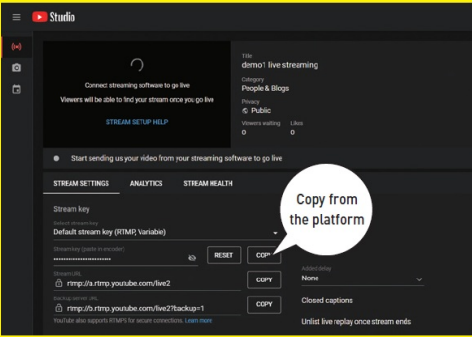
This is a setting method for live streaming using platforms compatible with RTMP/RTMPS such as YouTube.

- YouTube” and the “YouTube logo” are registered trademarks of Google Inc.
  - Here we will be explaining using a streaming setting using YouTube Studio as an example.
  - When you wish to schedule a post or if you have less than 1,000 subscribers on YouTube, connect with RTMP/RTMPS.

This is a setting method for live streaming using platforms compatible with RTMP/RTMPS such as YouTube.



 **Configure settings from the social streaming platform**

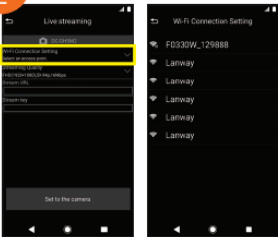


① Set the privacy settings and date and time.  
 ② Set other details.  
 ③ Copy the stream URL.  
 ④ Copy the stream key.  
 ⑤ Copy to your email, etc. and share with an app.

Copy from the platform

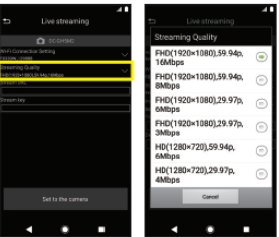
**STEP 2**

**Wi-Fi settings**



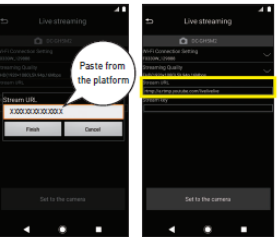
[ Configure Wi-Fi connection settings ]  
[ Select a wireless access point ]

**Image quality settings**



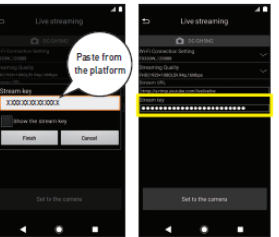
[ Set the streaming quality ]

**Stream URL settings**



[ Obtain a stream URL from the social streaming platform and configure settings ]

**Stream key settings**

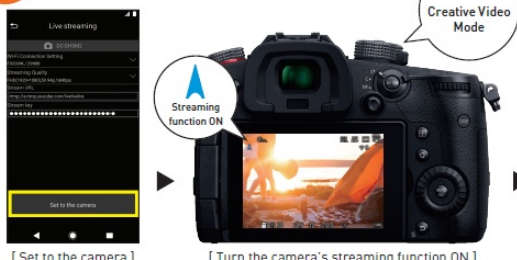


[ Obtain a stream key from the social streaming platform and configure settings ]

STEP 3 NEXT PAGE

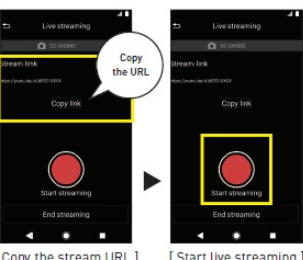
- If a list of smartphones that you wish to connect is not displayed, turn the tethering function “OFF/ON” again.
- Confirm the upstream speed of the network that you are using before streaming and select the streaming quality.
  - When streaming using a smartphone network, a tethering service contract for your carrier is required.

**STEP 3** Set from LUMIX Sync to a camera



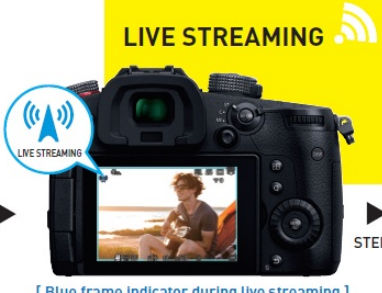
[ Set to the camera ]  
[ Turn the camera's streaming function ON ]

**Spread the URL and start streaming**



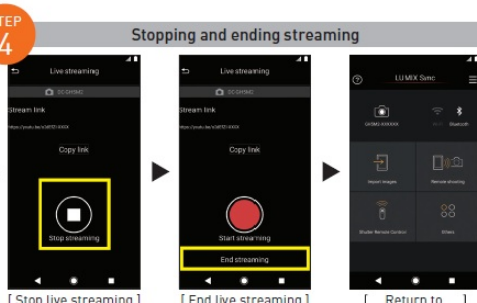
[ Copy the stream URL ]  
[ Start live streaming ]

**Blue frame Indicator during live streaming**



**STEP 4**

**Stopping and ending streaming**



[ Stop live streaming ]  
[ End live streaming ]  
[ Return to the top screen ]

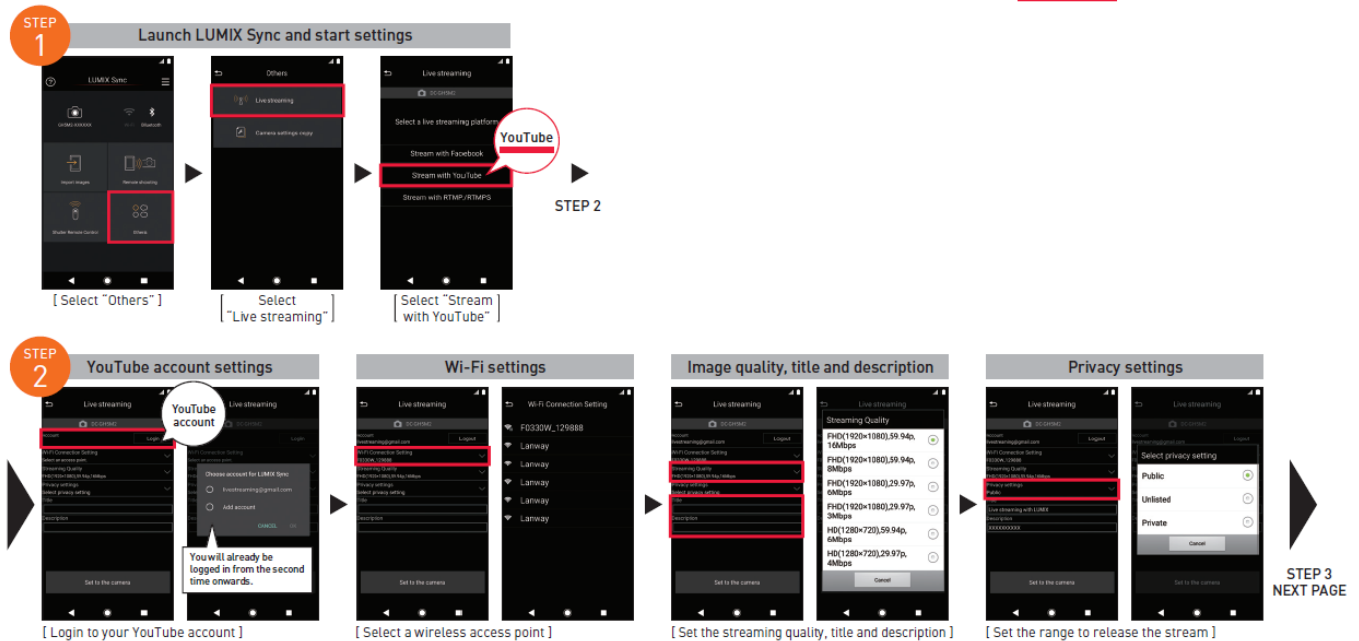
Announce the URL with social media, email, etc.

**\*The blue frame indicator can be switched ON/OFF.**

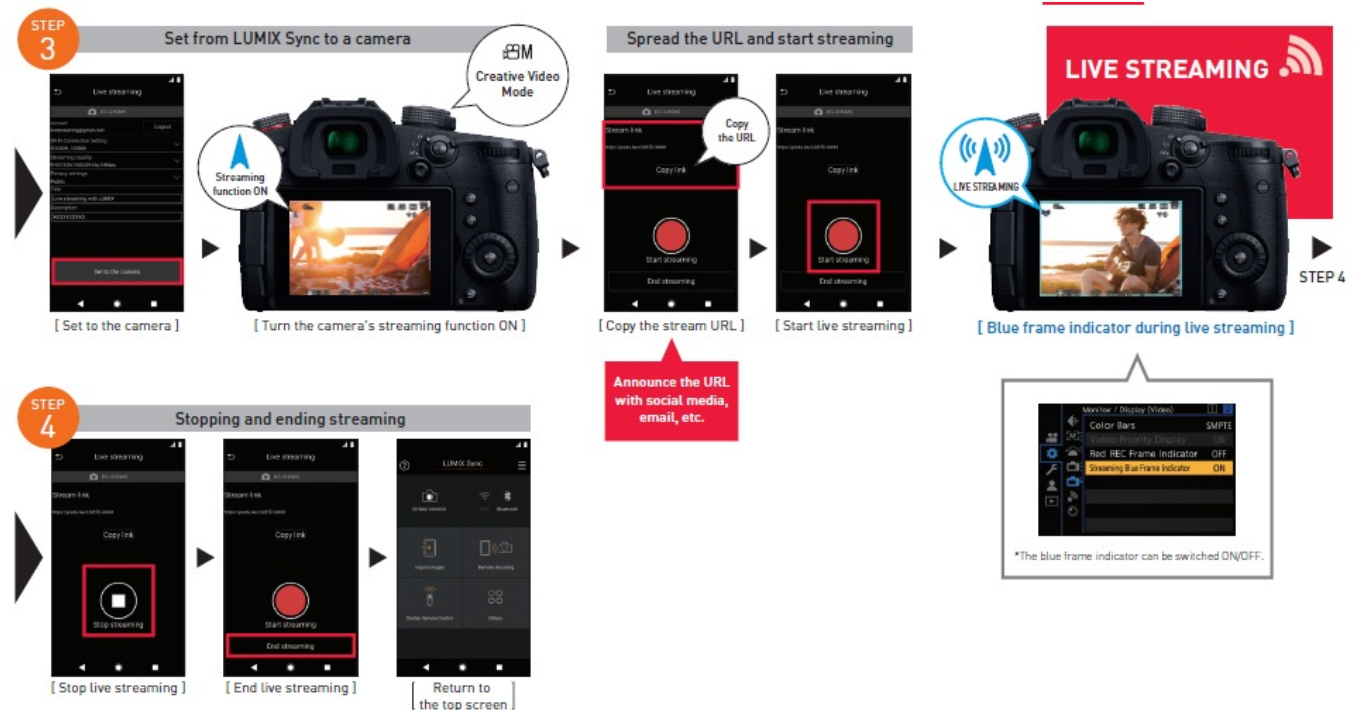
## Streaming with YouTube LIVE

- YouTube™ and the “YouTube logo” are registered trademarks of Google Inc.
  - Connect with RTMP/RTMPS if you have less than 1,000 subscribers on YouTube.

How to set live streaming using your account and YouTube Studio if you are a YouTube user with over 1,000 subscribers.



- If a list of smartphones that you wish to connect is not displayed, turn the tethering function "OFF/ON" again.
- Confirm the upstream speed of the network that you are using before streaming and select the streaming quality.
  - When streaming using a smartphone network, a tethering service contract for your carrier is required.

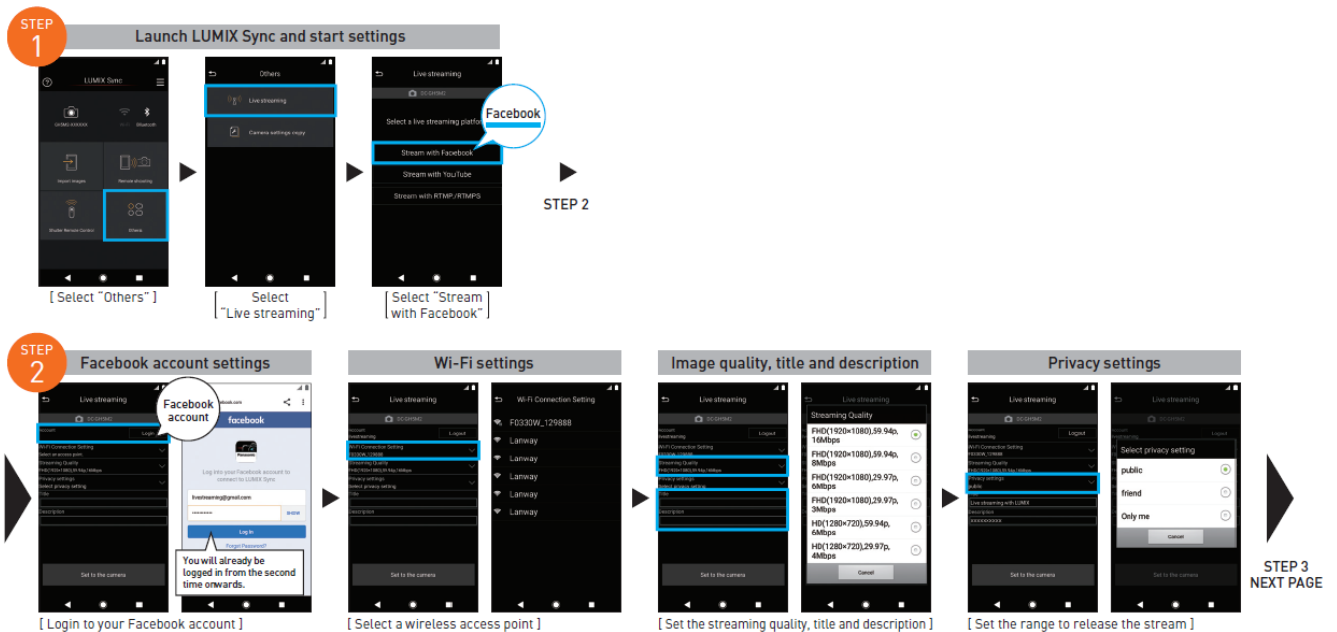


## Streaming with Facebook LIVE

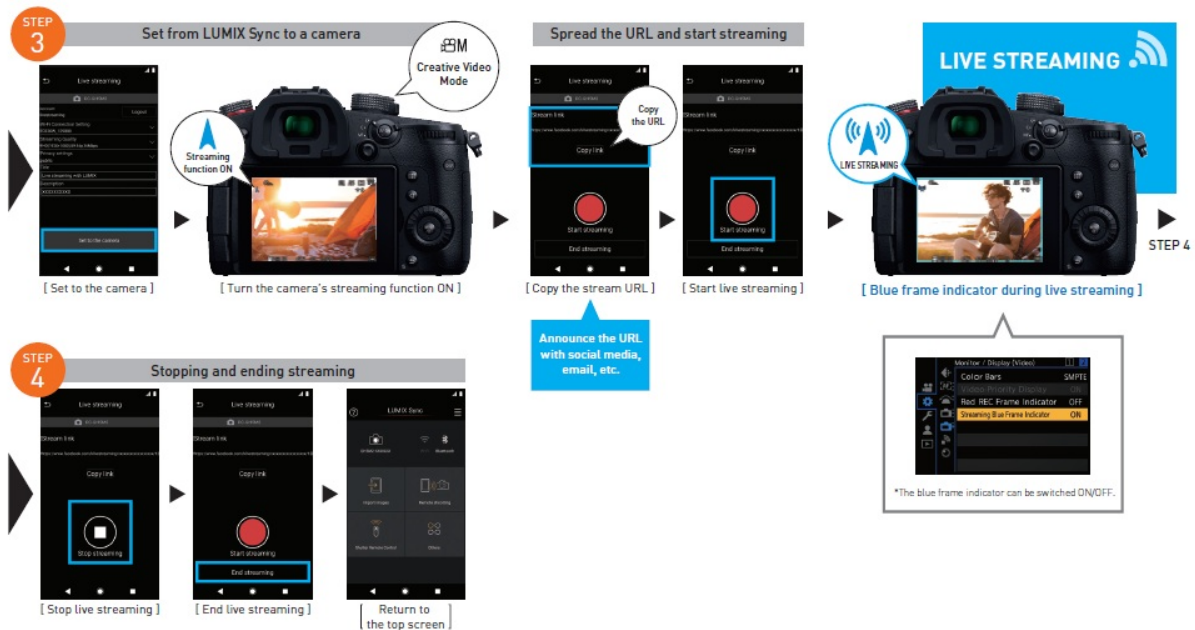
- Facebook is a registered trademark of Facebook, Inc.

Setting method for live streaming using your Facebook account and Facebook LIVE.





- If a list of smartphones that you wish to connect is not displayed, turn the tethering function "OFF/ON" again.
- Confirm the upstream speed of the network that you are using before streaming and select the streaming quality.
  - When streaming using a smartphone network, a tethering service contract for your carrier is required.



## Live streaming by operating the camera

Set the streaming destination with your PC and save onto an SD memory card. Insert the card into your camera and start live streaming by loading the streaming settings onto your camera.

STEP 1

Install the LUMIX Network Setting Software onto your PC



[ Prepare your PC ]

PC software  
[ LUMIX Network Setting Software ]  
Download site  
<https://panasonic.jp/support/dsc/download/index3.html>

Supported OS (as of September 2021)  
Windows: Windows 10  
Mac: macOS 10.13, 10.14, 10.15.3-10.15.7, 11.0-11.2

Insert an SD card into your PC

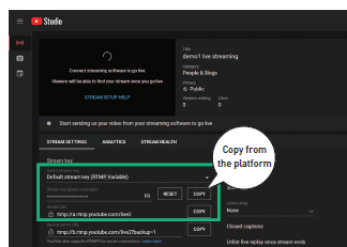


STEP 2

\*Please use an SD memory card with free space.  
\*If your PC does not have an SD memory card slot, use an SD card reader.

STEP 2

Obtain the streaming content settings from the platform



\*Here we will be explaining using the YouTube LIVE (YouTube Studio) settings as an example.

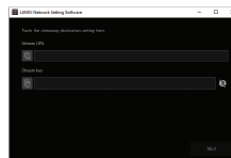
■ Login to your account.

[ Configure settings from the social streaming platform ]  
Set the privacy settings and date and time.  
Set other details.

★ Copy the stream URL  
★ Copy the stream key

! Obtain the URL from the platform

Input to the LUMIX Network Setting Software



[ Launch the LUMIX Network Setting Software ]

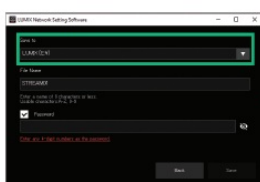


[ Paste the stream URL and stream key that you copied ]

STEP 3  
NEXT PAGE

STEP 3

Export from the LUMIX Network Setting Software to the SD card



[ Export the streaming destination onto the SD memory card ]

[ Settings file ]

[ STREAM01.STM ]



[ Save to the SD memory card ]



Insert the SD card into your camera and start settings

GH5II

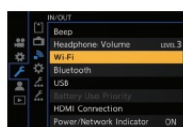


STEP 4

- Characters that can be set in "File Name": Alphabet (uppercase), numbers, up to 8 characters.
- To prevent usage from a third party, you can secure the streaming destination with a password.
  - Put a check mark in "Password".
  - When you set a password, password input will be required when loading the streaming destination.
  - You can enter any 4-digit numbers as the password.

STEP 4

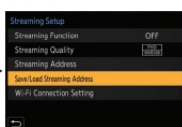
Load the streaming destination inside the SD card to your camera



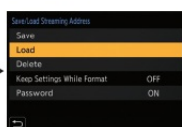
Select [ Wi-Fi ] in the camera menu



[ Select "Streaming Setup" ]



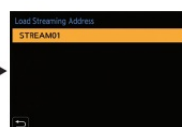
[ Select "Save/Load Streaming Address" ]



[ Select "Load" ]  
\*When a password is set, enter the password to load.

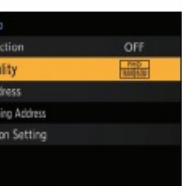
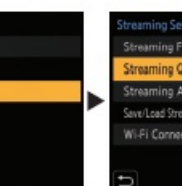
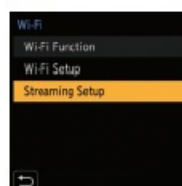


[ Select card slot ]

[ Load the streaming destination ]  
[ STREAM01.STM ]STEP 5  
NEXT PAGE

STEP 5

Set the image quality



STEP 6

Select [ Wi-Fi → Streaming Setup → Streaming Quality ] in the camera menu



## STEP 6

## Set the wireless access point

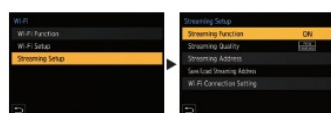


Select [ ] → Wi-Fi → Streaming Setup → Wi-Fi Connection Setting → New Connection [ Select an access point (Wi-Fi), enter the password (encryption key) and connect wirelessly ]

STEP 7  
NEXT PAGE

## STEP 7

## Set the streaming function ON



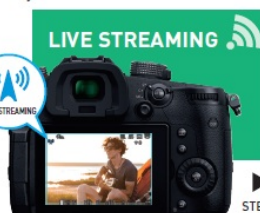
Select [ ] → Wi-Fi → Streaming Setup → Streaming Function → ON



Turn the camera's streaming function ON



Press the shutter button or video rec button and start live streaming



[ Blue frame indicator during live streaming ]  
\*The blue frame indicator can be switched ON/OFF.

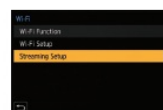
STEP 8

## STEP 8

## Stopping and ending streaming



Press the shutter button or video rec button and stop live streaming



Select OFF to end live streaming

**Try using the schedule stream!**

\*Here we will be explaining using the YouTube LIVE (YouTube Studio) settings on your PC as an example.

Auto-start settings

When enabled, you can automatically start streaming by starting it with your camera or LUMIX Sync. When disabled, the streaming will not start automatically with your camera or LUMIX Sync, and you must press the stream start button on the PC.

\*With Facebook, press the streaming button on your PC and start.

## Documents / Resources



[Panasonic Lumix GH5M2 Live Streaming Camera Settings](#) [pdf] User Guide  
Lumix GH5M2, Live Streaming Camera Settings, Lumix GH5M2 Live Streaming Camera Settings, Camera Settings

## References

- [P](#) | [LUMIX](#) | [Panasonic](#)
- [P](#) [About Live streaming function of DC-GH5M2](#) | [Digital Camera](#) | [Digital AV](#) | [Support](#) | [Panasonic Global](#)