



panacom Q5-1MP IP Camera with APP User Manual

[Home](#) » [panacom](#) » panacom Q5-1MP IP Camera with APP User Manual 

Contents

- [1 panacom Q5-1MP IP Camera with APP](#)
- [2 Product accessories-display](#)
- [3 Dimensions](#)
- [4 Download the mobile client APP First](#)
- [5 Rest the device](#)
- [6 Network configuration](#)
- [7 AAP quick configuration](#)
- [8 INTERNATIONAL WARRANTY](#)
- [9 Documents / Resources](#)
- [10 Related Posts](#)

panacom[®]
Living & Loving Technology

panacom Q5-1MP IP Camera with APP

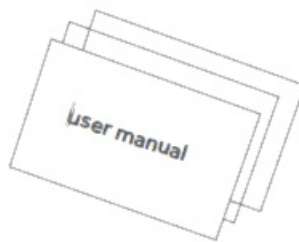


Product accessories-display

Please read this instruction manual carefully before using the product, Packing list included.



Camera x 1



User manual x 1



Power cable x 1



Adaptor x 1

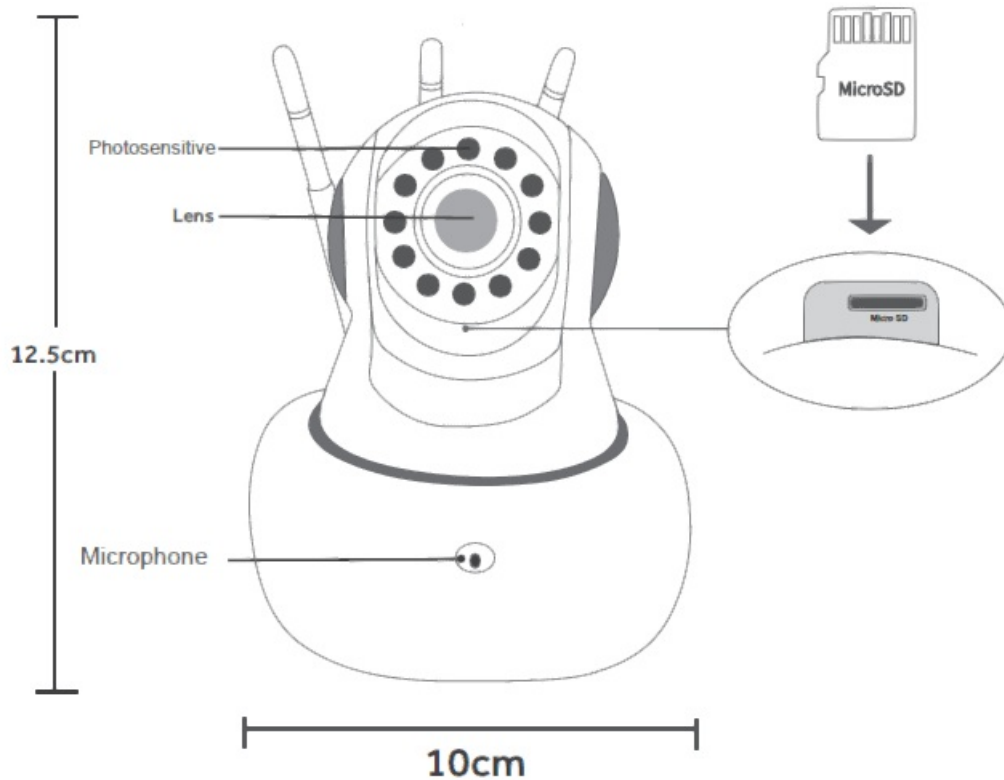


Stand x 1

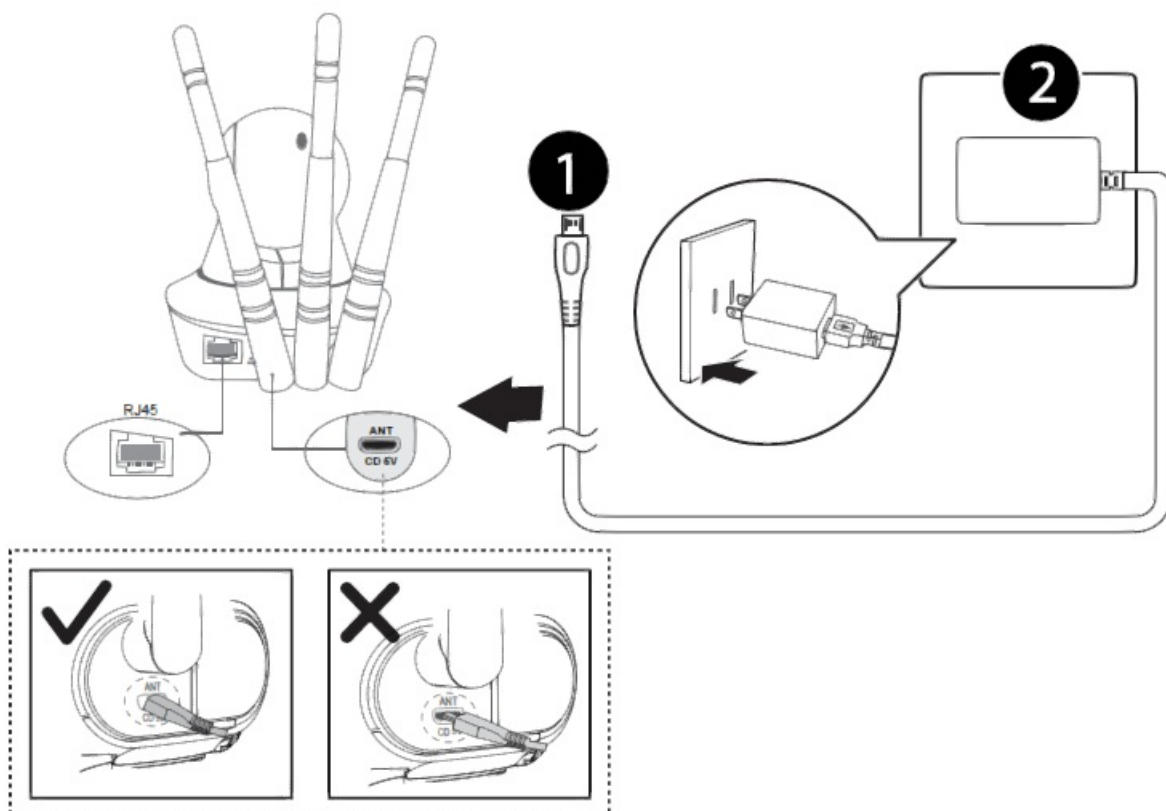


Screw bag x 1

Dimensions



(speaker, power connector, reset button)



Product Parameter

Model		Pixels	100W / 200W
Lens	3.6MM	Chip	AK3918E (ANYKA)
D-WDR	Stand By	Power	5V/1.6A
Audio	Built-in microphone and speaker,Two-way communication		
Storage	TF card(Max 64G)/Cloud service storage(Optional)		
Network	Wireless connection,AP hotspot matching		
View Angle	Pan Range:0°-355°Tilt Range:0°-70°		
Video Encoding	H.265 Video Encoding		
Video Standard	PAL		
Electronic Shutter	Auto		
Detection & Alarm	Motion detection / AI face recognition (Optional) ,App message alarm		
Minimum Illumination	0.01 LUX		
Digital Noise Reduction	2D、 3D		
Day and night conversion mode	IR-CUT automatic switchover		

Download the mobile client APP First

The mobile phone scans the QR code to download the mobile client APP.



V380 Pro

Reset the device

Please configure patiently for the first time of use Power on the device, wait for voice prompts, and proceed according to voice prompts



"reset" button

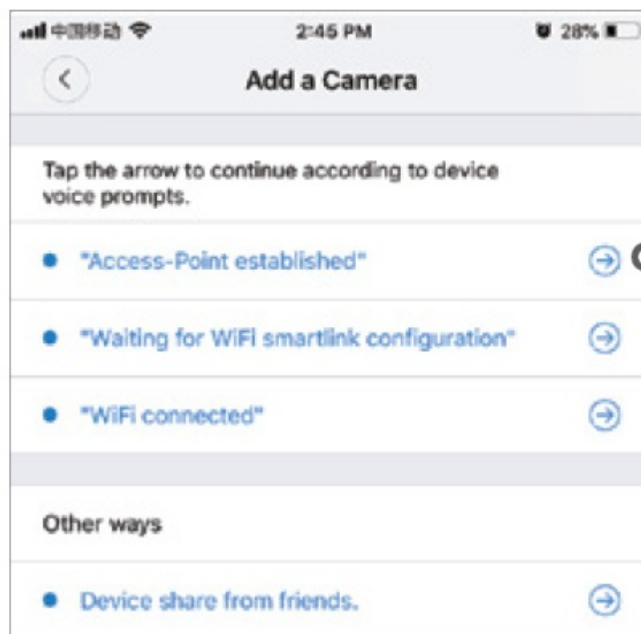
1.when you hear"waiting for WiFi smart link configura-tion",please use WiFi smart link to configure

2.when you hear "access point established",please use AP quick configuration to configure

(the "reset" button is for reference only, actual position may vary depends on the actual product in your hand)

Network configuration

1. Tap "+" and then tap "Next".
2. Wait until you hear "Access-Point established" or "Waiting for WiFi smartlink configuration" now you can start connecting the camera to Wi-Fi



3. If you hear the camera voice prompt "Access-Point established" choose method A or B to configure the camera.
4. If you hear the camera voice prompt "Waitingfor WiFi smartlink configuration", choose method C to configure the camera.

AAP quick configuration

- Tap “Access-Point established”, MV+ID will be shown, tap it to proceed.
- Choose your Wi-Fi network, enter the password, tap “Confirm”, and the camera will start connecting Wi-Fi.
- Once you hear the camera voice prompt “WiFi connected”, it will be shown on device list.
- The last step for setting up your camera is to set a password for the camera.

INTERNATIONAL WARRANTY

Terms and Conditions


1. Panacom warrants the operation of this product to be free from any manufacturing and/or material defect for a period of 6 months from the date of purchase by the user.
2. This warranty is limited to the repair and/or replacement of this product, according to our own criterion, free of charge within the stipulated term and it does not extend to consequential or incidental damages to other products that may be used with this unit.
3. The warranty shall be voided in the following cases: a) repair or attempt to repair by third parties not authorized by the company. b) in case of performing any type of cut in connection cables, plugs, connectors, or other adapters different from the original ones provided by the company.
4. To make this warranty effective, you shall contact the Authorized Service Center of your country and they shall carry out the pertinent procedure. In order to start the necessary procedure to get said warranty, you shall hand in the Original Purchase Invoice where the purchase date, dealer name and product identification shall be stated clearly.
5. Transportation, freight, stay and/or insurance expenses, if any, are not covered by this warranty.

REPAIR SERVICE

Adaptor x 1 Stand x 1 To ask for customer service please call 0810-888-7262.



Documents / Resources

	panacom Q5-1MP IP Camera with APP [pdf] User Manual Q5-1MP IP Camera with APP
---	--