



Pamex 7100R Rim Exit Device-Reversible Instruction Manual

[Home](#) » [Pamex](#) » Pamex 7100R Rim Exit Device-Reversible Instruction Manual 



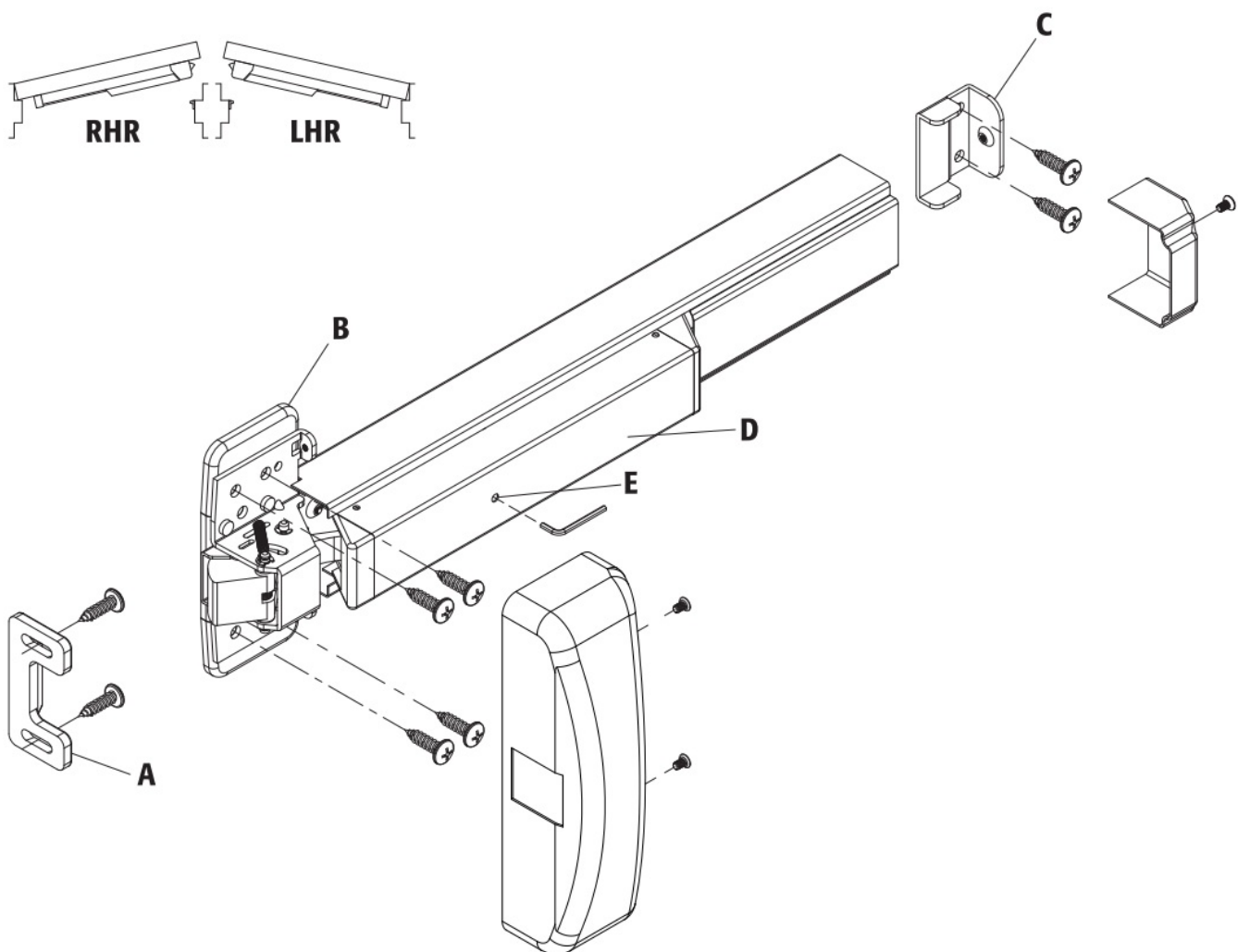
**7100R Rim Exit Device-Reversible
Instruction Manual**



7100R RIM EXIT DEVICE-RERVERSIBLE INSTALLATION INSTRUCTIONS LHR door shown , RHR door opposite

For steel prepared doors , drill / tap and use supplied machine screws.

For thin gauge metal , non-prepared doors and wood doors use wood screws.



A :Strie

B: Head assembly

C: End plate

D : Push bar

E : Dogging

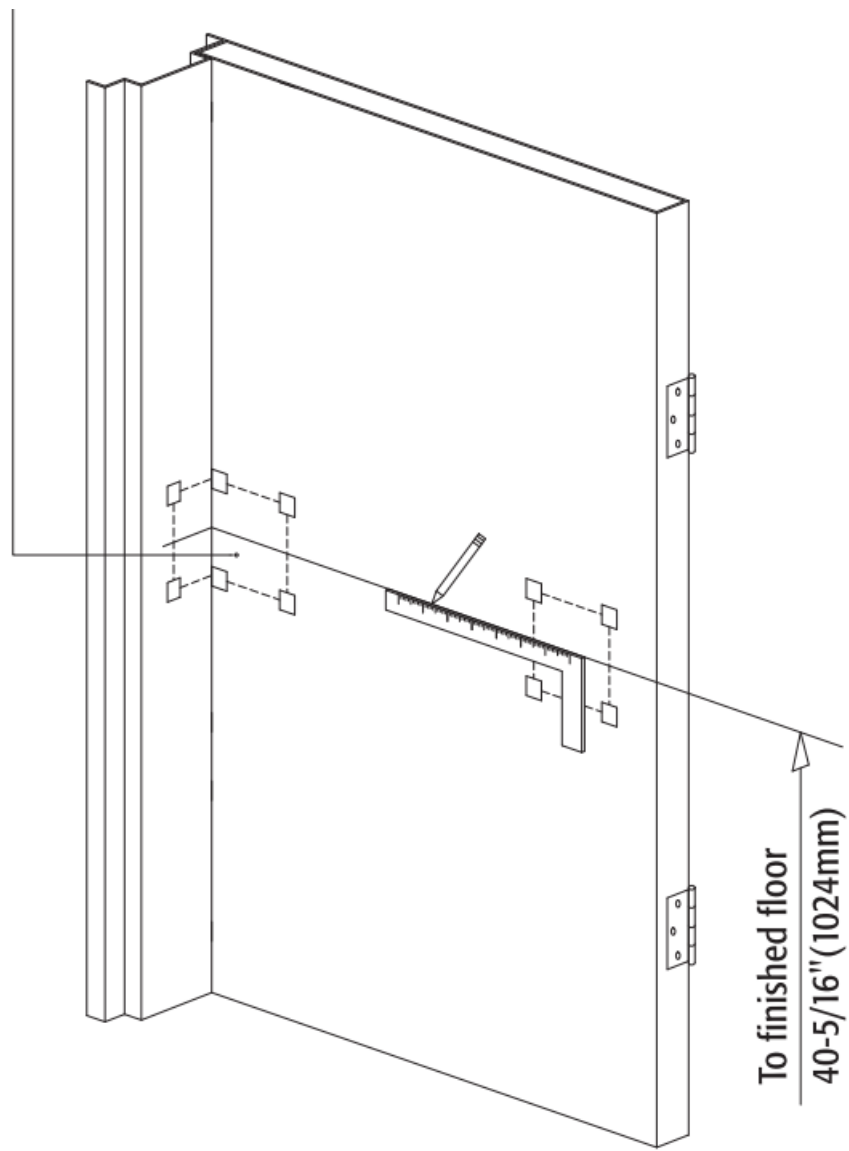
Dogging :

Depress push bar, insert dogging wrench and turn 900

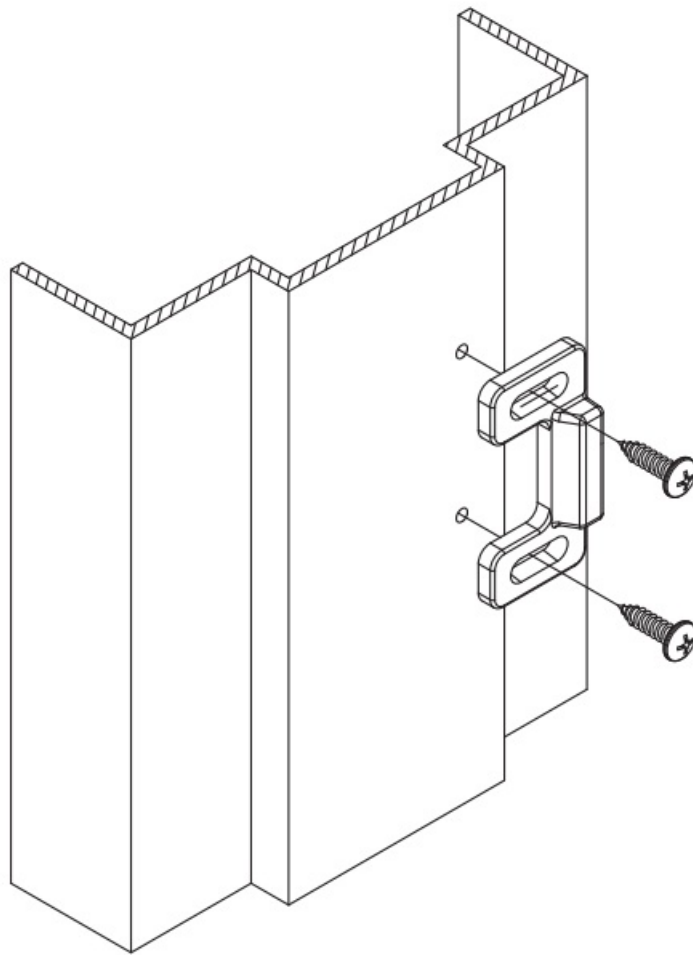
The push bar will remain depressed

The latch will rimain retracted

Strike Install



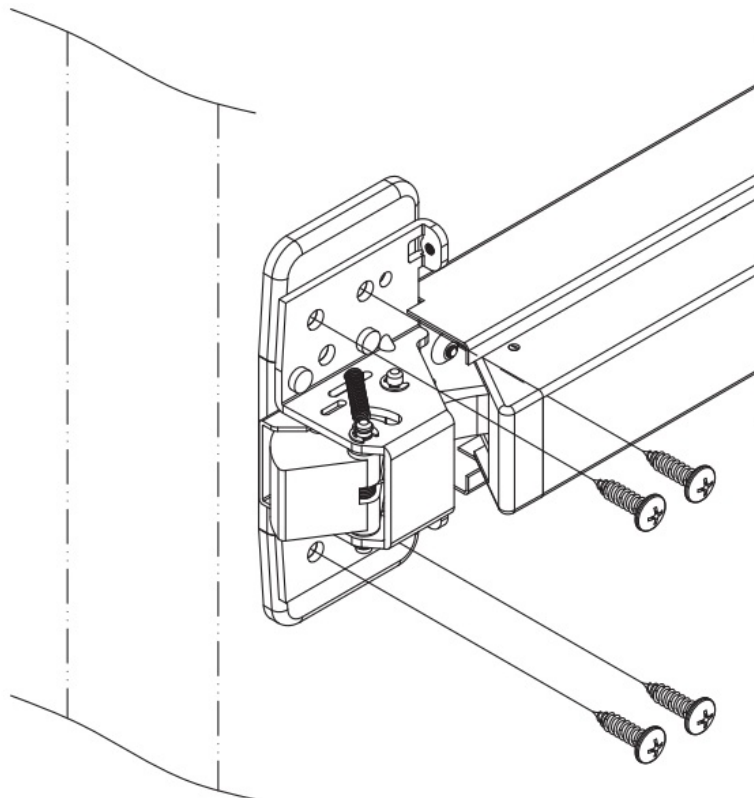
Device template



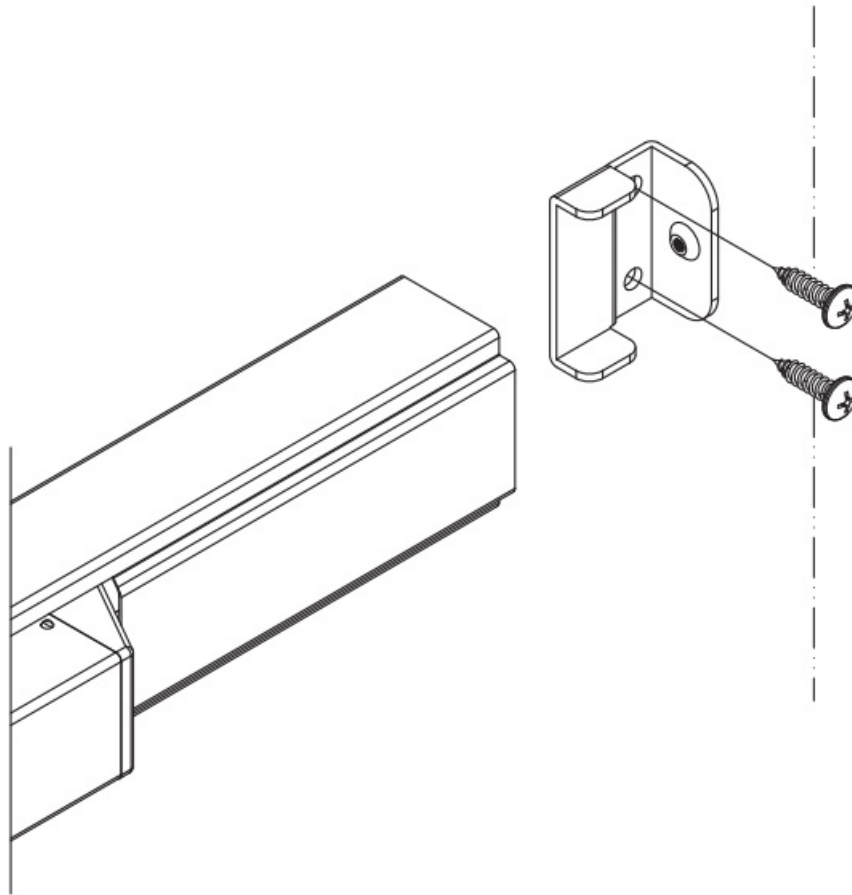
Install the strike to the frame with 2 screws as shown

Head assembly and end plate Install

Step 1: Install the head assembly to the door with 4 screws as shown



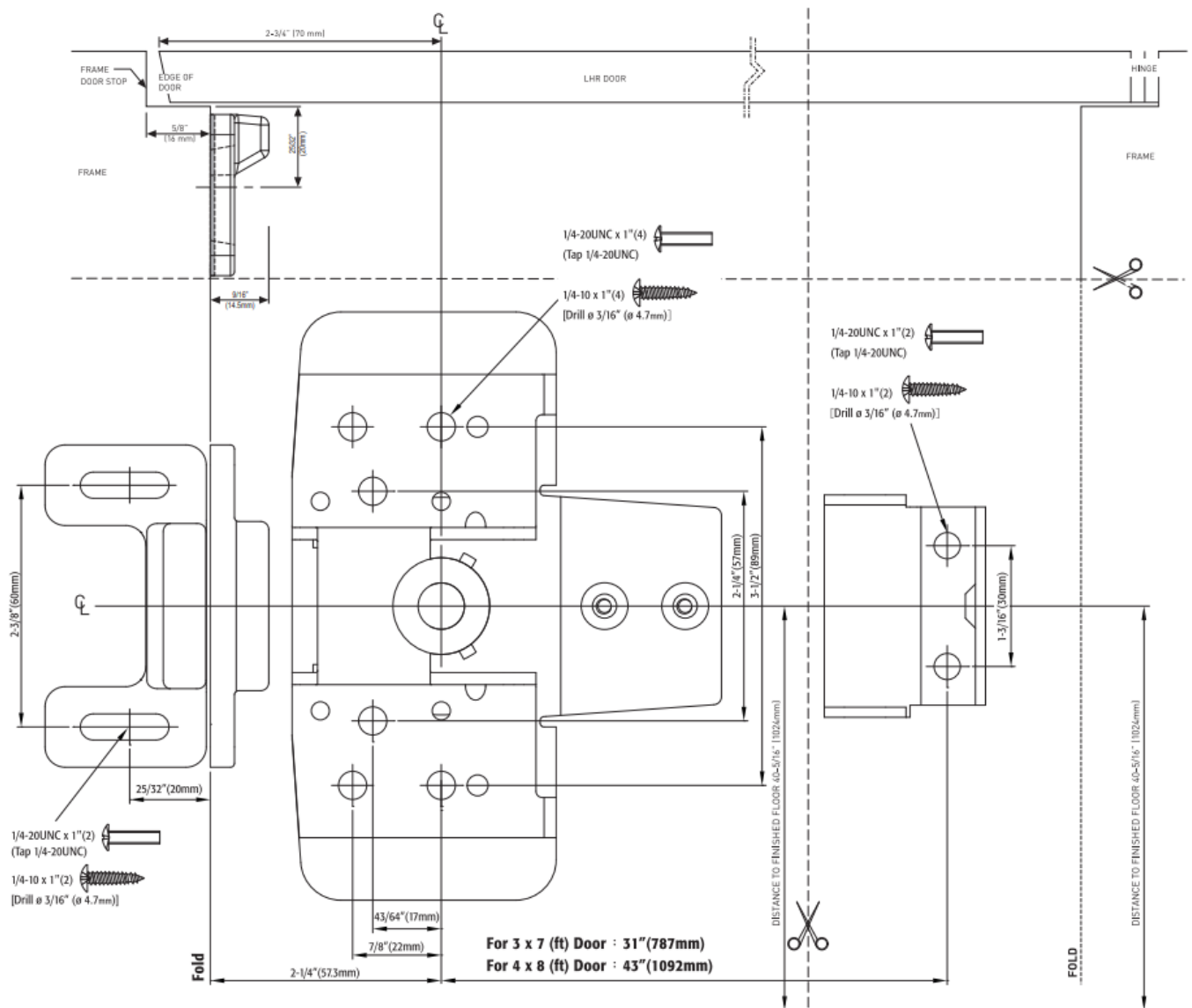
Step 2: Install the end plate to the door with 2 screws as shown



Contents

- [1 7100R Rim Safety Rated Panic Device Template](#)
- [2 F7100R Rim Fire Rated Panic Device Template](#)
- [3 Documents / Resources](#)
- [4 Related Posts](#)

7100R Rim Safety Rated Panic Device Template



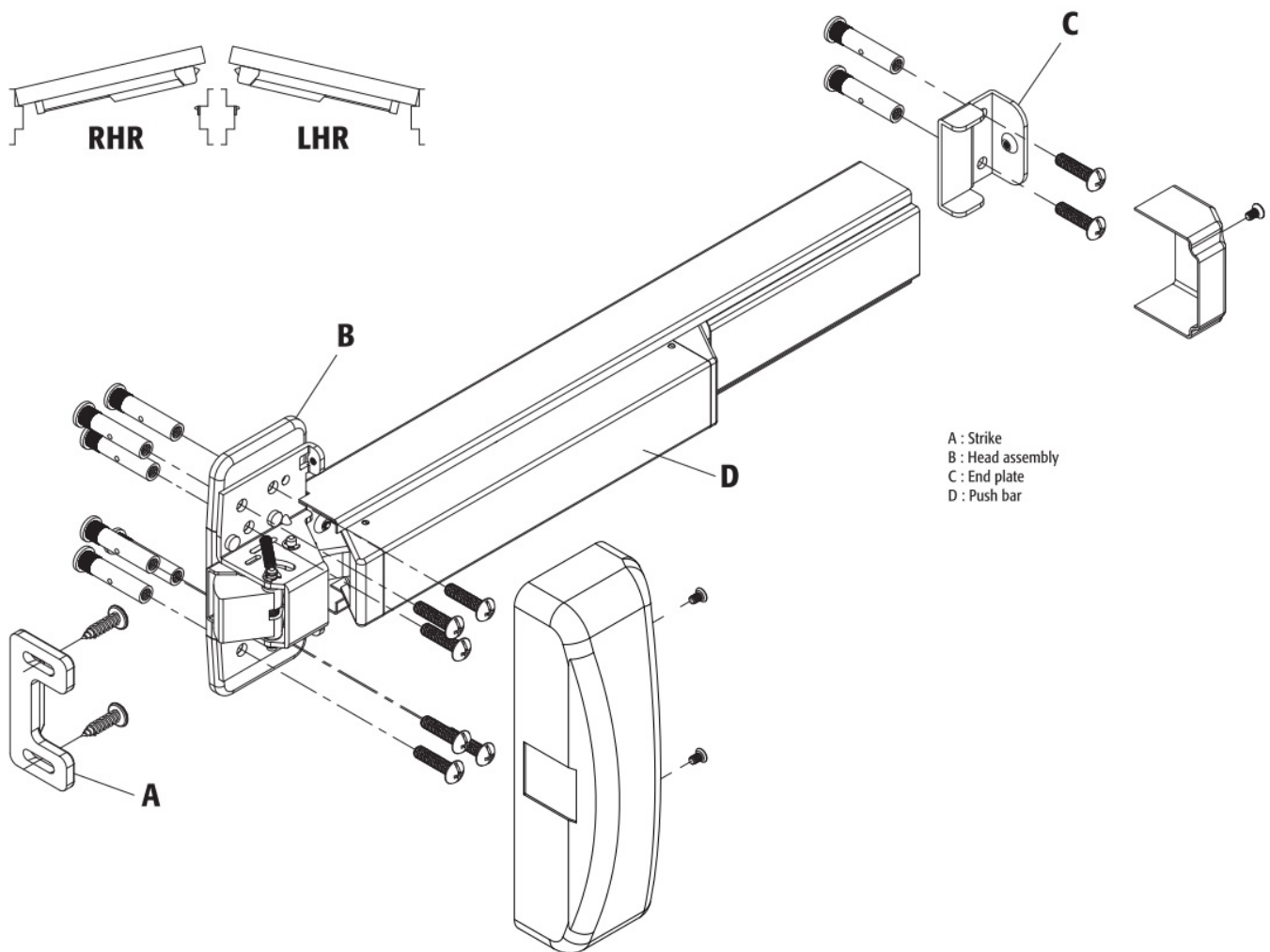
F710OR RIM FIRE RATED EXIT DEVICE-RERVERSIBLE INSTALLATION INSTRUCTIONS

LHR door shown , RHR door opposite

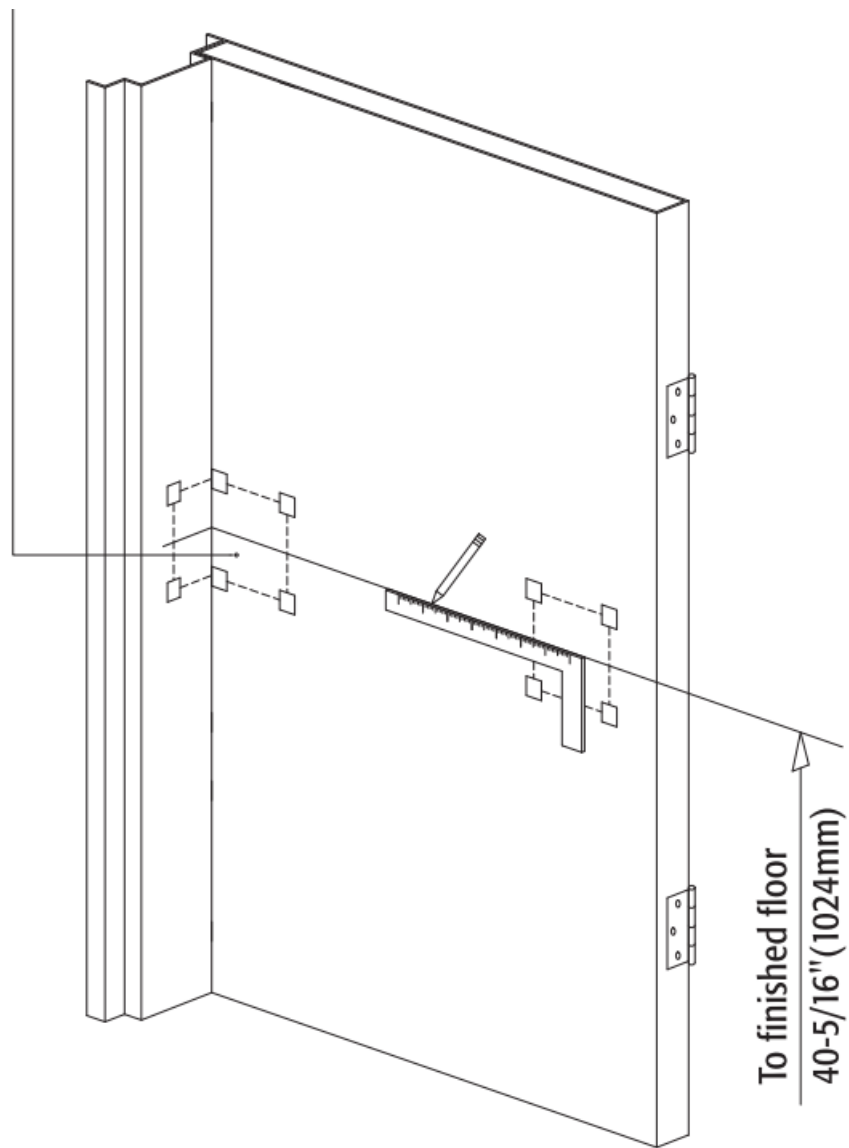
For steel prepared doors , drill / tap and use supplied machine screws.

For thin gauge metal , non-prepared doors or for labeled wood doors use thru bolts.

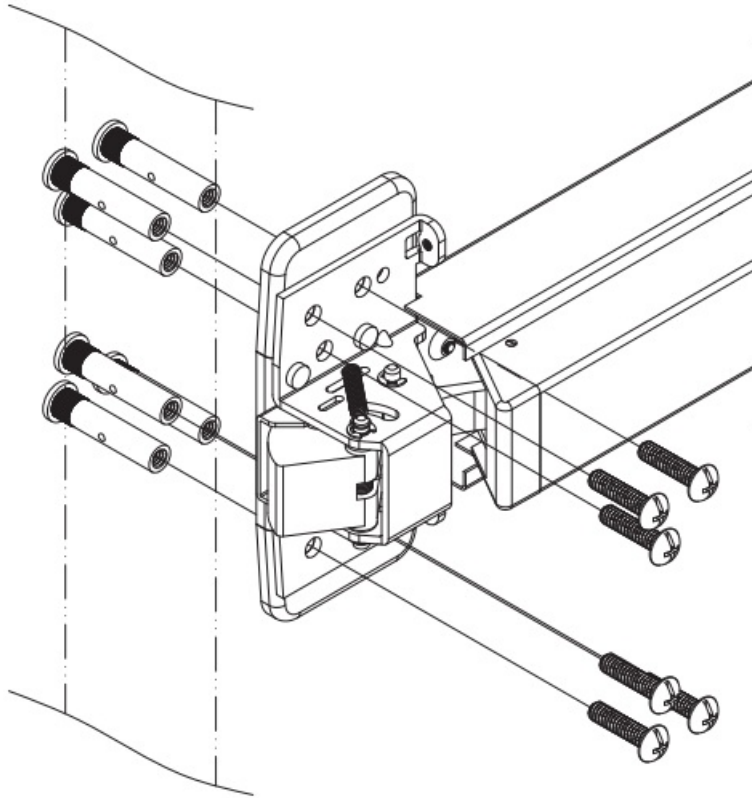
See template for details on mounting screws.



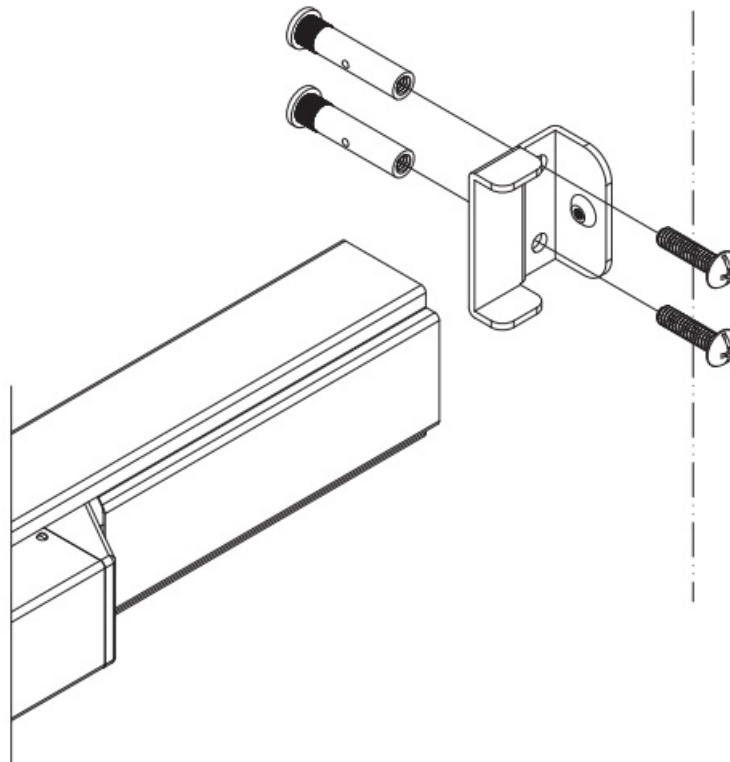
Device template



Install the strike to the frame with 2 screws as shown
Head assembly and end plate Install

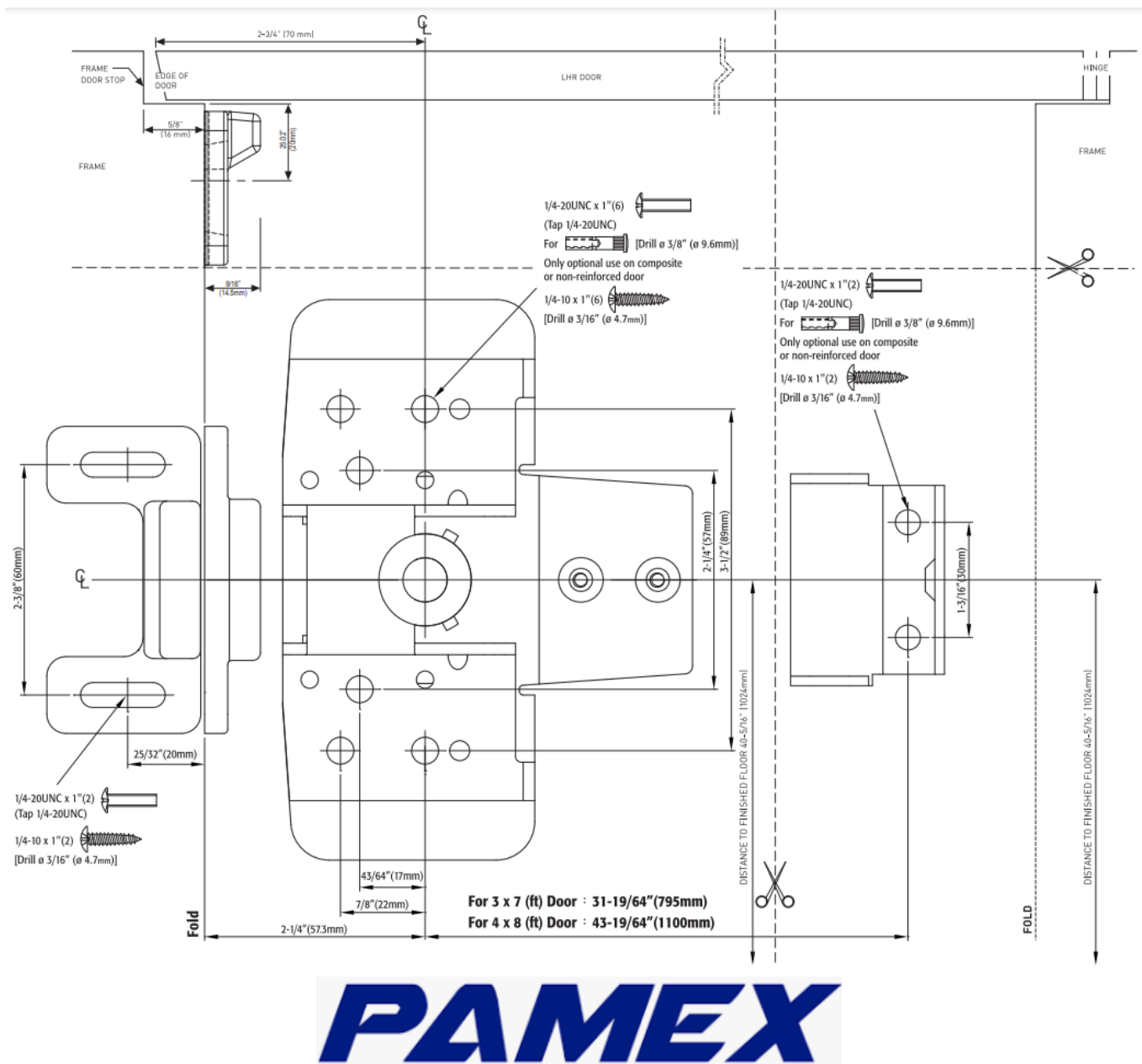


Step 1: Install the head assembly to the door with 4 screws as shown



Step 2: Install the end plate to the door with 2 screws as shown

F7100R Rim Fire Rated Panic Device Template



Documents / Resources

	<p>Pamex 7100R Rim Exit Device-Reversible [pdf] Instruction Manual</p> <p>7100R Rim Exit Device-Reversible, 7100R, Rim Exit Device-Reversible, Exit Device-Reversible, -Reversible</p>
--	--------------------------------------------------------------------------------------------------------------------------------------------------------------------------------------------------------