



# **PACIFIC IMAGE ELECTRONICS Glite T8 Stand Alone Operation and Compact Gel Documentation System User Manual**

[Home](#) » [PACIFIC IMAGE ELECTRONICS](#) » **PACIFIC IMAGE ELECTRONICS Glite T8 Stand Alone Operation and  
Compact Gel Documentation System User Manual** 



**Glite T8 Stand Alone Operation and  
Compact Gel Documentation System  
User Manual**

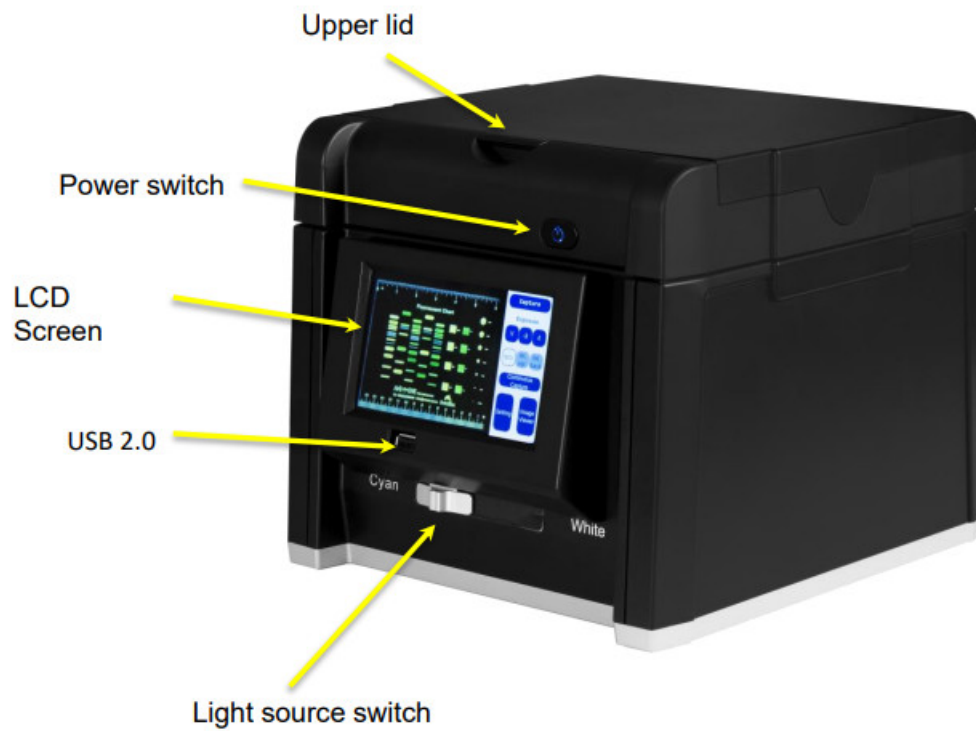


## Contents

- 1 [Product Content](#)
- 2 [Install & use](#)
- 3 [User Interface](#)
- 4 [Instruction](#)
- 5 [Use amber filter](#)
- 6 [Product Specification](#)
- 7 [Contact Information](#)
- 8 [Documents / Resources](#)
- 7.1 [References](#)
- 8 [Related Posts](#)

## Product Content

- Glite T8
- User manual
- Gel shovel
- A/C Power Transformers(12V, 4.1A, DC)
- Amber Filter (in box)
- Black shading plate (in box)
- Gel cutter

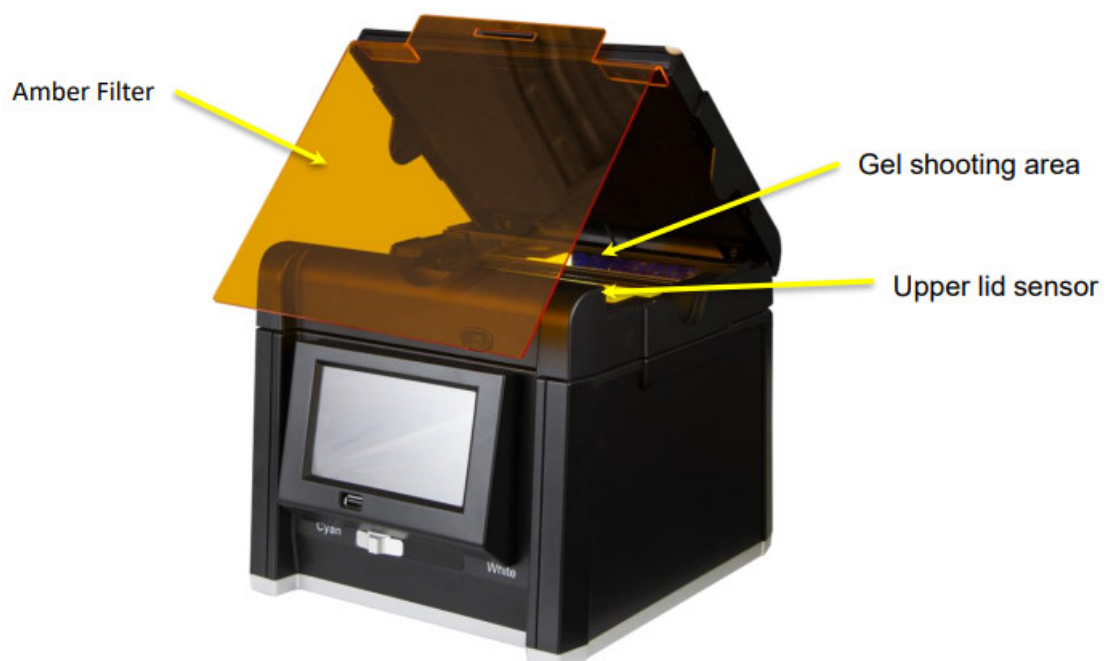


## Glite T8 Front

- Upper lid
- USB 2.0
- LCD Screen
- Power switch
- Light source switch

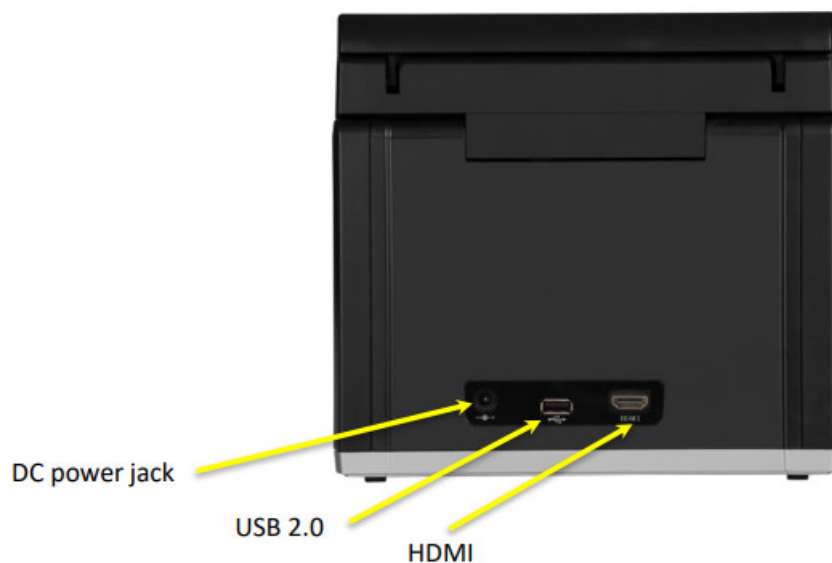
## Interior

- Gel shooting area
- Upper lid sensor



## Back

- DC power jack
- USB 2.0
- HDMI

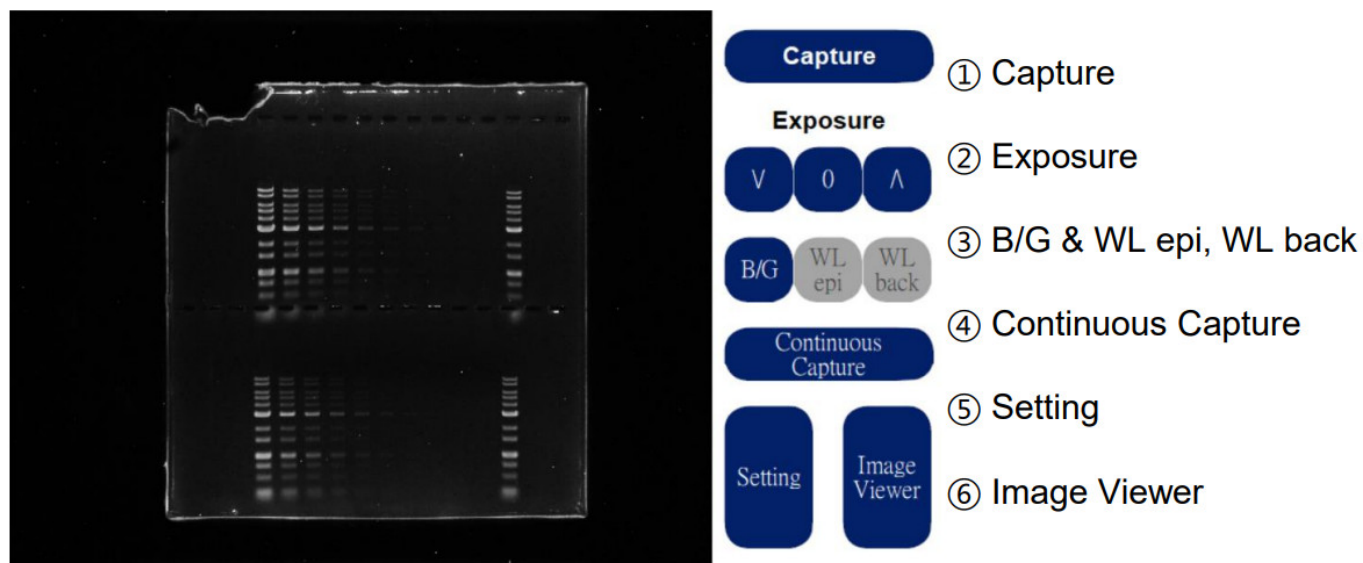


## Install & use

1. Remove all fixing tape.
1. Place the Glite T8 on a flat table.
1. Connect the power supply.
1. Press the power switch.
1. Insert the USB flash drive into the USB2.0 port on the front.
1. Put the gel into gel shooting area.
1. Adjust the image exposure value to a satisfactory condition and press the button to take a photo.

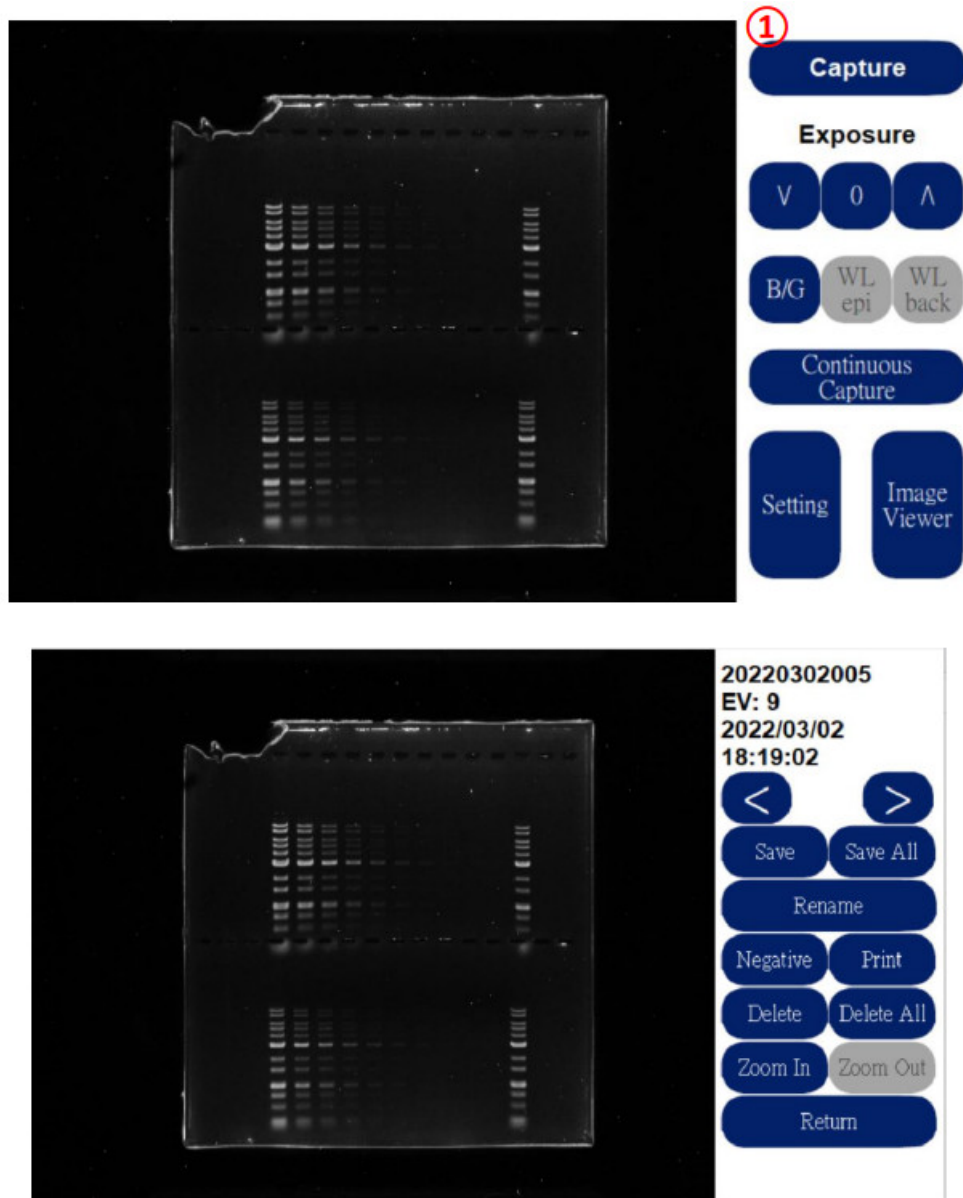
## User Interface Instruction

### Main screen



1. Capture

1. ① Capture is the button that allows you to take photos and capture the gel imaging screen.



Click Capture, and after loading ends, you will be redirected to the setting screen after shooting.

Save – Save this result

Save all – Save all results

Rename – Can be renamed

Negative – Can be adjusted to invert effect

Print—Print result\*

Delete – Delete this result

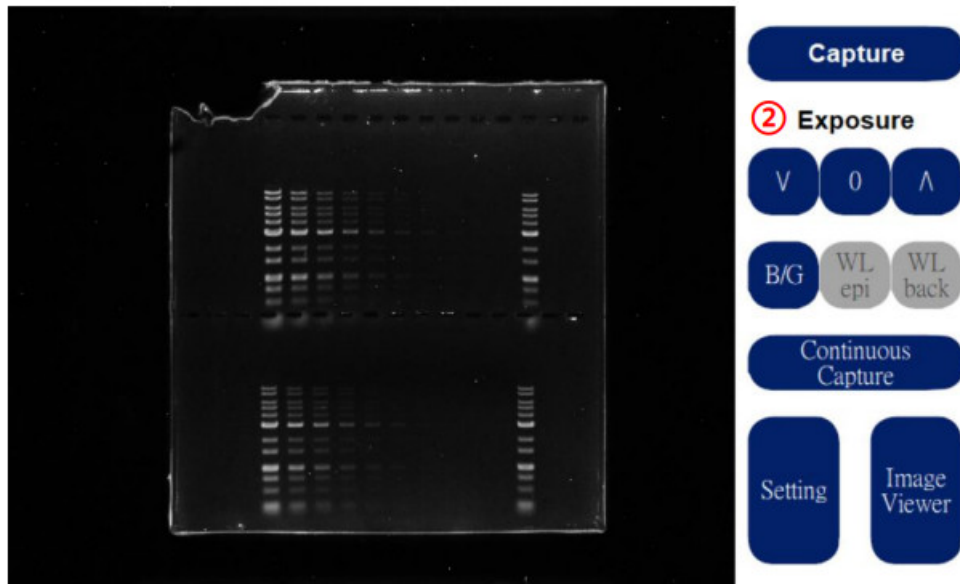
Delete all – Delete all results

Zoom In/Out—Image zoom in/out

Return – Back to the main screen

\*Glite T8 support Sony thermal printer: UP-D898MD & UP-897MD

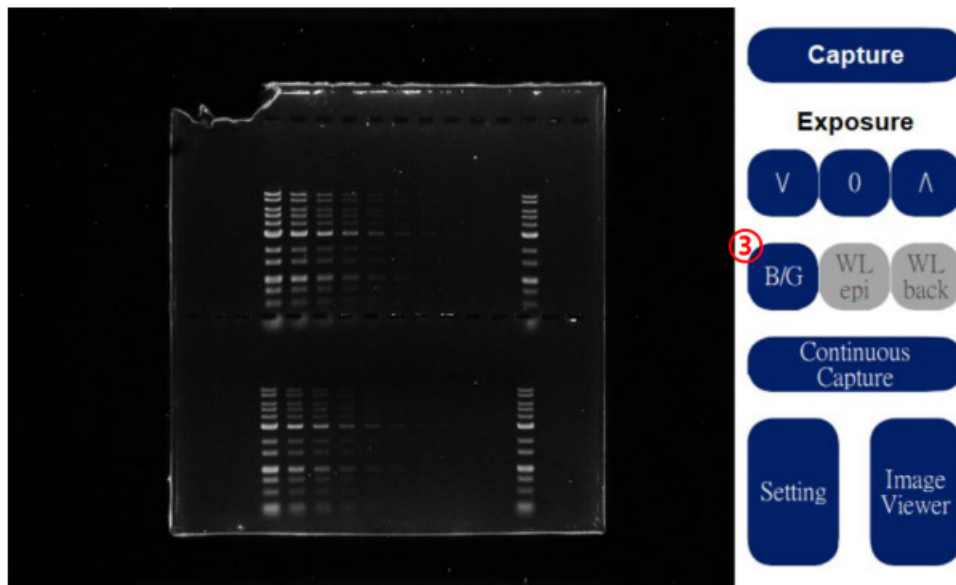
## 2. Exposure



② Exposure allows users to adjust the exposure level.

Range: -10 to +10

### 3. B/G & WL epi, WL back



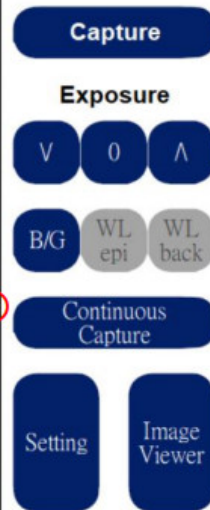
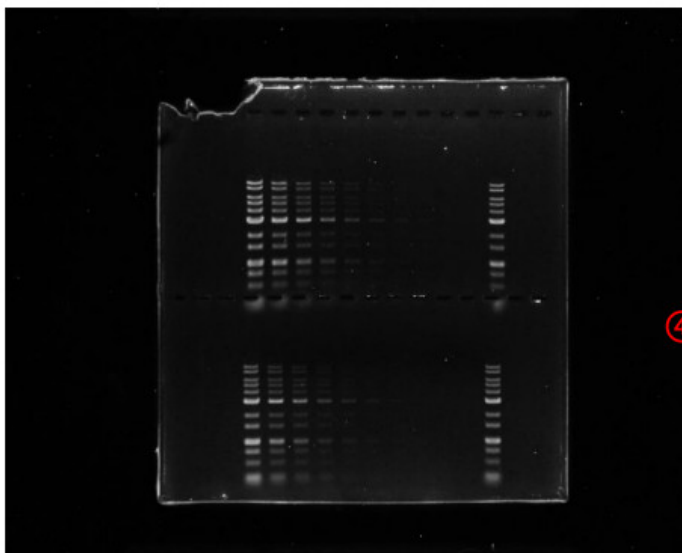
③ B/G is to adjusted to Cyan's light source using the switch on the front of the device.

WL epi, WL back is to adjusted to White by the switch on the front of the device, and it has two modes: front light and backlight



← \*Notice: Click once to initiate the light source, and the background of the button would be white.

### 4. Continuous Capture



④ Continuous Capture is the exposure value that can continuously shoot screens from -2 to +2.

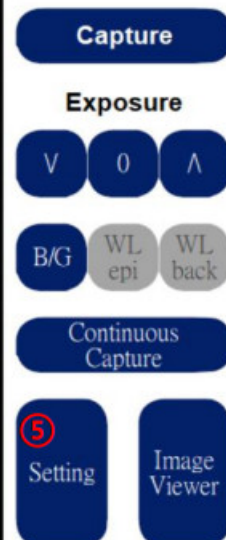
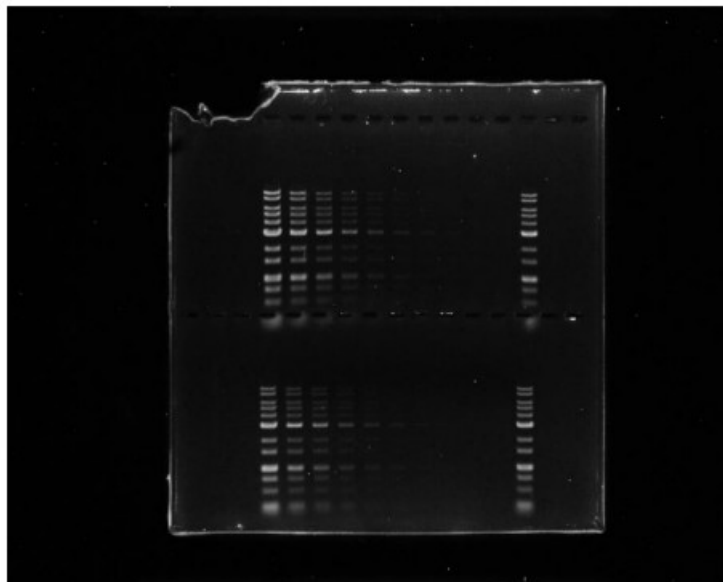
After clicking, the following screen will appear

**Capture EV:-2~EV:+2**  
**Are you sure?**

Yes

No

## 5. Setting



⑤ Setting contains a variety of different settings (see next page)

Glite T8 UI-SW:v1.0.0.25a IO-FW:v0.0

Update S/W

Sleep

Date  
Time

Mouse

Save Format

TIF

Color Type :

Color

Language :

English

Update S/W – Plug in the USB to update the software



Glite T8 UI-SW:v1.0.0.25a IO-FW:v0.0

Update S/W

Sleep

Date  
Time

Mouse

Save Format

TIF

Color Type :

Color

Language :

English

Sleep – Sleep time can be set (as shown below)

Sleep after

1 Min.

5 Min.

10 Min.

30 Min.

Never

Back

Glite T8 UI-SW:v1.0.0.25a IO-FW:v0.0

Update S/W

Sleep

Date  
Time

Mouse

Save Format

TIF

Color Type :

Color

Language :

English

Date/Time – Set the date and time (as shown below)

Date :

Year : 2021

Month : 3

Day : 12

Time :

Hour : 9

Minute : 56

Second : 19

OK

Back

Glite T8 UI-SW:v1.0.0.25a IO-FW:v0.0

Update S/W

Sleep

Date  
Time

Mouse

Save Format

TIF

Color Type :

Color

Language :

English

Mouse – You can connect a mouse to the USB port for operation

Glite T8 UI-SW:v1.0.0.25a IO-FW:v0.0

Update S/W

Sleep

Date  
Time

Mouse

Save Format

TIF

Color Type :

Color

Language :

English

Save Format – Optional storage image format (as shown below)

^

TIF

JPEG

PNG

v

Back



Glite T8 UI-SW:v1.0.0.25a IO-FW:v0.0

Update S/W

Sleep

Date  
Time

Mouse

Save Format

TIF

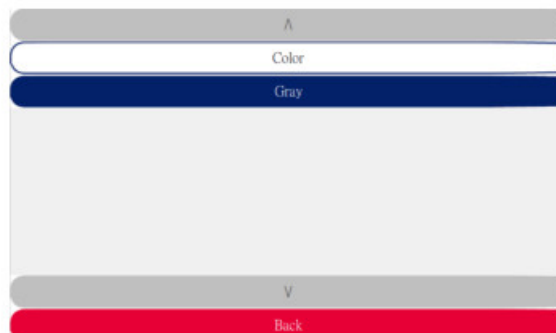
Color Type :

Color

Language :

English

Color Type – Choose Color or Gray  
(as shown below)



Glite T8 UI-SW:v1.0.0.25a IO-FW:v0.0

Update S/W

Sleep

Date  
Time

Mouse

Save Format

TIF

Color Type :

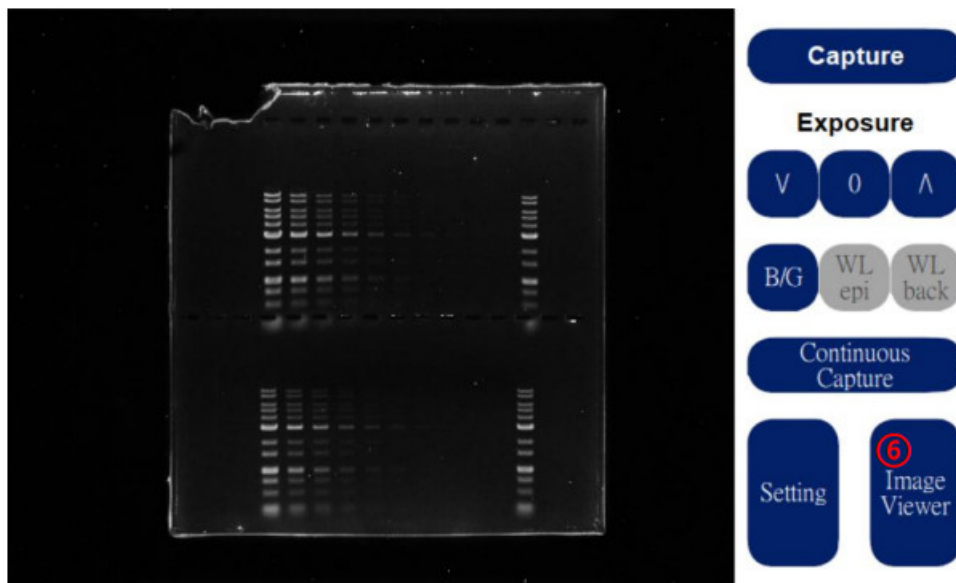
Color

Language :

English

Language – English or Chinese

## 6. Image Viewer



© Image Viewer allows you to browse the previously analyzed images, please refer to the explanation on p8 for the screen.

## Cyan Dye Gel

1. Lift up the upper lid.
1. Slide the black shading plate (with the flannel side outward) into the rail to cover the white backlight plate of the upper cover.
1. Close the upper lid (if you need to open the cover to cut gel, observe or adjust the position, please use the amber filter, as shown in the right picture, see p23).
1. Switch the light source to Cyan.
1. If necessary, adjust the parameters through the Camera Tester in the Setting to obtain satisfactory image

quality (please refer to p16).

1. Press the Capture button and the Loading icon will appear on the LCD panel.  
The gel shooting process is complete.



To shoot fluorescent film images, please slide the black shading plate (with the flannel side outwards) into the rail to cover the white backlight plate of the upper cover to avoid reflections.

#### **Use a white light source to shoot WESTERN BLOT/ and color gel film:**

##### **1. Shooting HRP/DAP WESTERN BLOT with WL epi**

1. Slide the black shading plate (with the flannel side outward) into the rail to cover the white backlight plate of the upper cover.
2. Close the upper lid.
3. Switch the light source to the White position.
4. Set "WL epi" on the main screen.
5. If necessary, adjust the parameters through the Camera Tester in the Setting to obtain satisfactory image quality (please refer to p16).
6. Press the Capture key.

##### **2. Use WL back to shoot SDS-PAGE gel with coomassie blue dye**

1. Pull out the black shading plate, do not cover the white backlight plate of the upper lid.
2. Close the upper lid.
3. Switch the light source to the White position.
4. Set "WL back" on the main screen.
5. If necessary, adjust the parameters through the Camera Tester in the Setting to obtain satisfactory image quality (please refer to p16).
6. Press the Capture key.

#### **Use amber filter**

Glite T8 has an amber filter to facilitate the user to observe and cut blue or blue-green light excited gel

1. When you open the top lid, the blue or blue and green lights on both sides will automatically turn off
1. Push the upper lid to the highest
1. Hang the amber filter as shown on the right
1. After installing the amber filter, you can use the attached rubber cutting tool and press the camera button to

start the blue/cyan light for gel cutting.



**Project the screen to an external screen or projector**

The operation screen of the machine can be projected to an external screen or projector through HDMI.

- 1. Set the TV or screen or projector to HDMI mode
- 2. Connect the HDMI cable to the video port of the TV or screen or projector
- 3. Connect the other end of the HDMI cable to the HDMI port on the back of the Glite T8
- 4. The operation screen of Glite T8 will be projected to the connected TV or screen or projector.

**Product Specification**

I. Instrument	
Image component	CMOS
Exposure time range	21 levels
Image storage	USB
Gel shooting area	16 x 10.5cm (Fixed lens)

II. Lens and filter	
Filter Turret	Manual-Driven, 2 position
Emission Filter	518nm Amber Filter

III. Light	
Cyan light (GW)	510 nm LED
Epi white light	White light LED
White light backlight	White light LED backlight

VI. Interface	
Screen	5" Touch TFT LCD
Internal storage	SD Card
Output	1. USB 2.0 x2
	2. HDMI out

V. Other information	
information	AC Adaptor, 12V/4.6A
Power	22.9 x 20.7 x25.4cm (9.02 x 8.14 x 10 inches)
Size(WxHxD)	Amber filter
Gel cutting tool Weight	3.2Kg (7.05 lb)
Safety certification	CE, FCC

## Contact Information


For more information or any question, please contact :

**PACIFIC IMAGE ELECTRONICS CO., LTD**  
**7F, No. 239, SEC. 1, DATONG RD., XIZHI DIST.,**  
**NEW TAIPEI CITY 221,**  
**TAIWAN**

**TEL: +886 2 8692 1800**  
**FAX: +886 2 8692 1860**  
[sales@scanace.com.tw](mailto:sales@scanace.com.tw)  
[www.scanace.com](http://www.scanace.com)

**Glite T8**  
**Made in Taiwan**  
**PACIFIC IMAGE ELECTRONICS CO., LTD**  
**7F, No. 239, SEC. 1, DATONG RD., XIZHI DIST., NEW TAIPEI CITY 221, TAIWAN**  
**TEL: +886 2 8692 1800**  
**FAX: +886 2 8692 1860**  
[www.scanace.com](http://www.scanace.com)

## Documents / Resources

 <p>User Manual Glite T8 Pacific Image Electronics Co., Ltd.</p>	<p><a href="#">PACIFIC IMAGE ELECTRONICS Glite T8 Stand Alone Operation and Compact Gel Documentation System</a> [pdf] User Manual</p> <p>Glite T8, Stand Alone Operation and Compact Gel Documentation System, Glite T8 Stand Alone Operation and Compact Gel Documentation System</p>
---	---

## References

-  [Pacific Image Electronics Co., Ltd](#)