



## P I T PHP120-C High Pressure Washer User Manual

[Home](#) » [P I T](#) 

### P I T PHP120-C High Pressure Washer



**GENERAL INFORMATION**






**INTENDED USE**

- The appliance can be used for washing surfaces outdoors, whenever pressurised water is required to remove dirt.
- With special optional accessories, it can be used for foaming and sandingblasting, and for washing with a rotary brush for application to the gun.
- This appliance’s performance and user friendliness make it suitable for NON PROFESSIONAL use.

**TECHNICAL DATA**

Model	PHP120-C	PHP130-C	PHP140-C
Rated Voltage	220V	220V	220V
Frequency	50Hz	50Hz	50Hz
Power	1500W	1800W	2100W
Max Pressure	120bar	130bar	140bar
Water Output	330L/h	420L/h	450L/h
Weight	kg	kg	kg

**SYMBOLS**


	<b>CAUTION!</b> It is important to be careful of the following items.
	<b>IMPORTANT</b>
	<b>LOCKED</b>
	<b>OPEN</b>
	<b>IF PRESENT</b>
	<b>Double insulated</b> (IF PRESENT): supplementary insulation is applied to the basic insulation to protect against electric shock in the event of failure of the basic insulation.

## SAFETY PRECAUTIONS

### WARNINGS

 **01WARNING:** This appliance is for outdoor use only.

 **02WARNING:** Always disconnect the electricity and water supplies on completion of every job.

 **03WARNING:** Do not use the machine if a supply cord or important parts of the machine are damaged, e.g. safety devices, high pressure hoses, trigger gun.



**04WARNING:** This appliance has been designed for use with the detergent provided or the detergent specified by the manufacturer, such as a neutral shampoo based on biodegradable anionic surface active detergents. The use of other detergents or chemicals may put the appliance's safety at risk.



**05a WARNING:** Do not use the machine within range of persons unless they wear protective clothing.  
**05b –** Do not allow other people or animals within a range of 5m when operating the machine.  
**05c –** Always wear suitable protective clothing in order to protect yourself against ricocheting parts.  
**05d –** Do not touch the plug and the appliance with wet hands or when barefoot.  
**05e –** Wear safety goggles and non-slip rubber footwear.



**06WARNING:** Do not direct the nozzle toward mechanical parts containing lubricant grease, as the grease will dissolve and spread over the surrounding ground. Vehicle tyres/tyre valves may only be cleaned from a minimum distance of 30 cm, otherwise the vehicle tyre/tyre valve could be damaged by the high-pressure jet. The first indication of this is a discoloration of the tyre. Damaged vehicle tyres/tyre valves can be deadly dangerous.



**07WARNING:** High pressure jets can be dangerous if subject to misuse. The jet must not be directed at persons, animal, live electrical equipment or the machine itself.



**08WARNING:** High pressure hoses, fittings and couplings are important for the safety of the machine. Use only hoses, fittings and couplings recommended by the manufacturer.

(it is extremely important to protect these components against damage by avoiding their improper use and protecting them against bending, knocks and scratches).



**09WARNING:** Appliances not equipped with T.S. – Total Stop : must not be left in operation for more than 2 minutes with the gun released. The recycled water heats up considerably, seriously damaging the pump.



**10WARNING:** Appliances equipped with T.S.– Total Stop : these appliances should not be left in standby for more than 5 minutes.



**11WARNING:** Switch the appliance off completely (master switch on (0)OFF) whenever it is left unattended.



**12WARNING:** Every machine is tested in its operating conditions, so it is normal for a few drops of water to be left inside it.



**13WARNING:** Take care not damage the electric cable. If the supply cord is damaged, it must be replaced by the manufacturer, its service agent or similarly qualified persons in order to avoid a hazard



**13b WARNING:** The power cord should not be used to pull or lift the machine.



**14WARNING:** Appliance with fluid under pressure. Keep a firm hold on the gun and be prepared to take the kickback pressure. Only use the high pressure nozzle provided with the appliance. **16WARNING:** This appliance is not intended for use by persons (including children) with reduced physical, sensory or mental capabilities, or lack of experience and knowledge.



**17WARNING:** Children should be supervised to ensure that they do not play with the appliance.



**18WARNING:** Never start the high-pressure cleaner without first completely unwinding the high-pressure hose.



**19WARNING:** When winding and unwinding the pipe take care not to cause the high-pressure cleaner to overturn.



**20WARNING:** Before unwinding or winding the hose, switch the machine off and release the pressure in the hose itself (switching off).



**21WARNING:** Risk of explosion — Do not spray flammable liquids.



**22WARNING:** To ensure machine safety, use only original spare parts from the manufacturer or approved by the manufacturer.



**23WARNING:** Do not direct the jet against yourself or others in order to clean clothes or footwear.

**WARNING:** Water that has flown through backflow preventers is considered to be non-potable.

**XX WARNING:** the machine shall be disconnected from its power source, by removing the plug from the socket-outlet, during cleaning or maintenance and when replacing spare parts

**XJ WARNING:** If an extension cord is used, the plug and socket must be of watertight construction.

**XY WARNING:** Inadequate extension cords can be dangerous.

## **SAFETY DEVICE**



**WARNING:** the gun is fitted with a safety catch. Whenever use of the machine is interrupted it is important to operate the safety catch to prevent accidental activation of the jet.

– Safety features: gun equipped with safety locking device, appliance equipped with (Class I) overload cutout, pump equipped with by-pass valve or shutdown device.

– The safety button on the gun is not there to lock the lever during operation, but to prevent its accidental operation.



**WARNING:** The appliance is equipped with a motor protection device: in case of device intervention, wait some minutes or, in alternative, disconnect and re-connect the product to the electric system. In case this problem repeats again or if the product does not start again, take the product to the nearest After Sales Service Point

## **STABILITY**



**WARNING:** The machine must be always kept on horizontal bases, in a safe and stable way.

## **USAGE**

### **DESCRIPTION OF THE MACHINE**

See the specific instructions manual provided.

### **ASSEMBLY INSTRUCTIONS**

See the specific instructions manual provided.

### **WATER SUPPLY**

Water supply collection

#### **Water supply from the water main**

- Connect a supply hose (not included) to the water inlet of the unit and to the water supply.
- Open the water supply.

The cleaner can only be connected to the water mains if the water mains is separated by a backflow preventer. Make sure that the hose is at least Ø 13mm-1/2 inch and that it is reinforced.



**WARNING:** Water that has flown through backflow preventers is considered to be non-potable.

**IMPORTANT:** Only clean or filtered water should be used for intake. The delivery of the water intake tap should be equal to the double of the maximum pump range.

- Minimum delivery rate: 15 l/ min.
- Maximum intake water temperature: 40°C
- Max inlet water pressure: 1Mpa

Place the cleaner as close to the water supply system as possible.

#### Water supply from an open container

- Unscrew the coupling part for the water inlet.
- Screw the suction hose with filter (not included) onto the water connection of the unit.
- Hang the filter in the container.
- Vent the unit before operation.
- Unscrew the high-pressure line at the high pressure outlet of the unit.
- Switch on the unit and let it run until water free of bubbles emerges at the high-pressure outlet.
- Switch off the unit and screw on the high-pressure hose again.

Failure to comply with the above conditions causes serious mechanical damage to the pump and the loss of warranty cover.

#### **ELECTRICITY SUPPLY**

The appliance's electrical connection must comply with the IEC 60364-1 standard.

**IMPORTANT:** Before connecting the appliance, make sure that the nameplate data are the same as those of the electrical mains and that the socket is protected by a differential security breaker with tripping sensitivity below 0.03 A – 30 ms.

- If the appliance's plug is not compatible with the socket, have the socket replaced with another of suitable type by professionally qualified staff.
- Never use the appliance in ambient temperatures below 0° C if it is equipped with a PVC (H VV-F) cable.



**XY WARNING:** Inadequate extension cords can be dangerous.



**XJ WARNING:** If an extension cord is used, the plug and socket must be of watertight construction.

Information for supply may also be obtained from the plug manufacturer.

	<16A	<25 A
<20m	ø 1,5 mm <sup>2</sup> – 14 AWG	ø 2,5 mm <sup>2</sup> -12 AWG
20 m-50 m	ø 2,5 mm <sup>2</sup> -12 AWG	ø 4,0 mm <sup>2</sup> -10 AWG

## PLUG

**HOW TO CONNECT THE CORD TO A U.K. PLUG: IMPORTANT** The wires in the mains lead are coloured in accordance with the following code:

**Blue** Neutral

**Brown** Live

**Yellow/Green** Earth

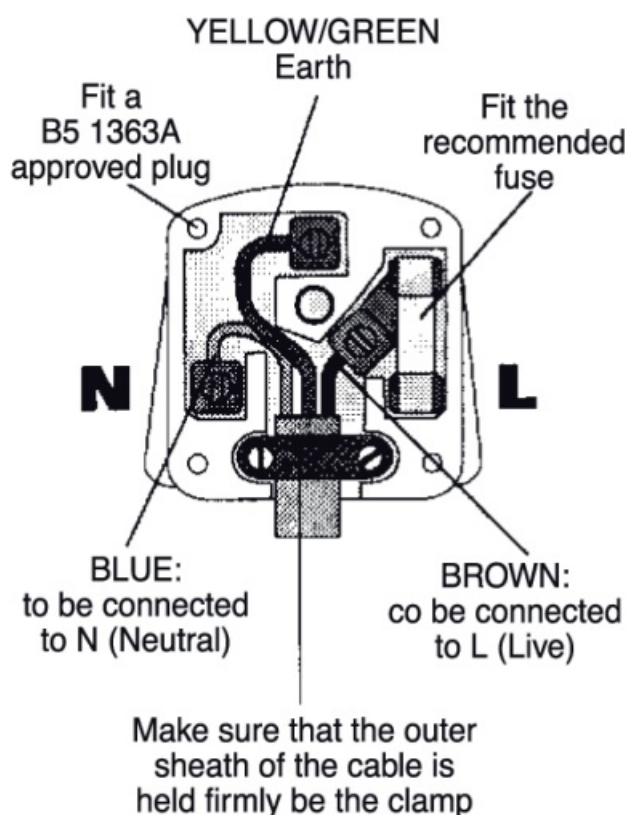
Please read the instructions given below before connecting the cord to a plug. If in doubt please consult a qualified electrician. As the colours of the wires in the mains lead of this appliance may not correspond with the coloured markings identifying the terminals in your plug, proceed as follows:

The wire that is coloured Brown must be connected to the terminal which is marked with the letter L or coloured Red. The wire that is coloured Blue must be connected to the terminal which is marked with the letter N or coloured Black.

Safety points for rewireable or moulded plug:

The mains lead of this appliance may be already fitted with a BS1363 13A plug.

- If your socket outlet is not suitable for the plug, then the plug must be removed (cut off if it is a moulded on plug), the flexible cord insulation should be stripped back as appropriate and a suitable 3 pin plug fitted.



**WARNING:** Dispose of a plug that has been cut from the power supply cord, as such a plug is hazardous if inserted in a live 13A socket outlet elsewhere in the house.

- Should the fuse need to be replaced an ASTA marked fuse, approved to BS1362, of the same rating must be used.

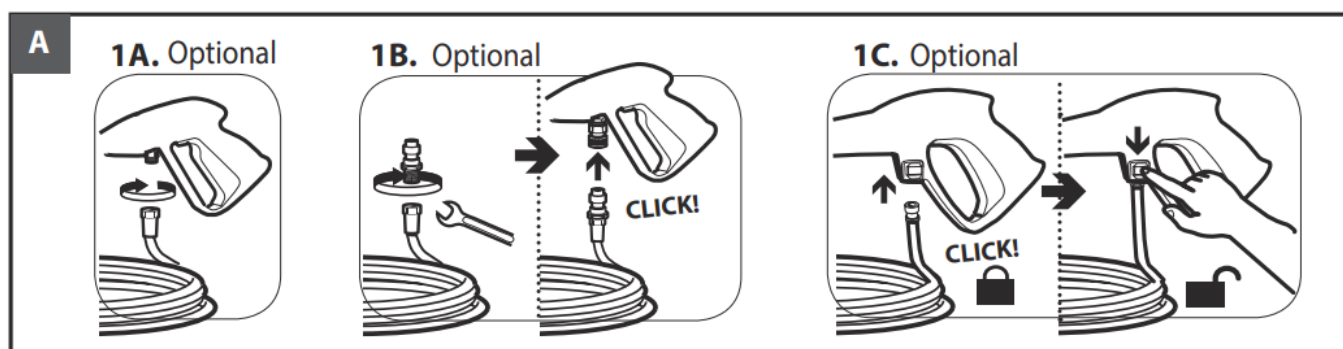
- Always replace the fuse cover after fitting a fuse.

The plug must NOT be used if the cover is omitted or lost until a replacement is obtained.

- Make certain that only the correct fuse cover is used and fitted.
- For plugs with detachable fuse cover the replacement must be the same as the colour insert in the base of the plug, or as directed by the embossed wording on the base of the plug.
- If the detachable fuse cover is lost a replacement may be purchased from a Service Centre.

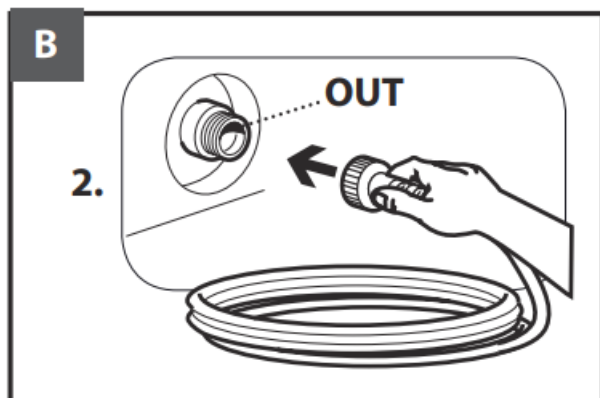
## PUT INTO SERVICE / STARTING UP

See fig. A



- Connect the high pressure hose to the trigger gun.
- Push the high pressure hose into the trigger gun.  
Note: Make sure the connection nipple is aligned correctly.
- Check the secure connection by pulling on the high pressure hose.

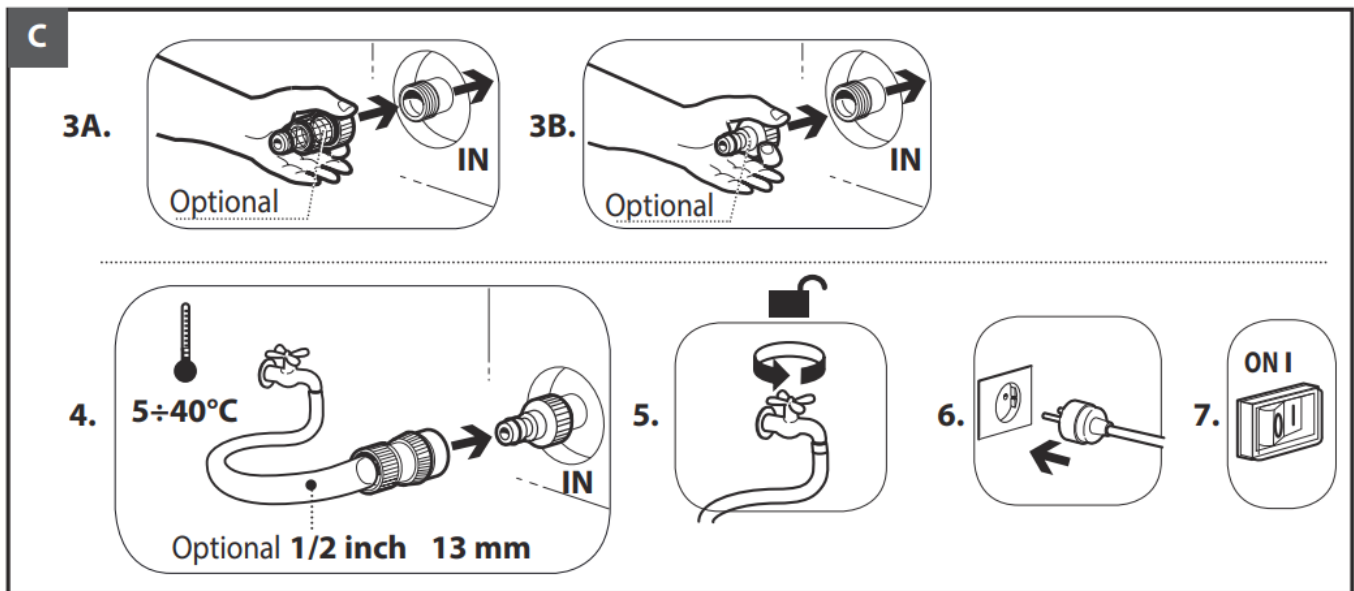
See fig.B



- Insert the high pressure hose tightly into the quick coupling on the appliance

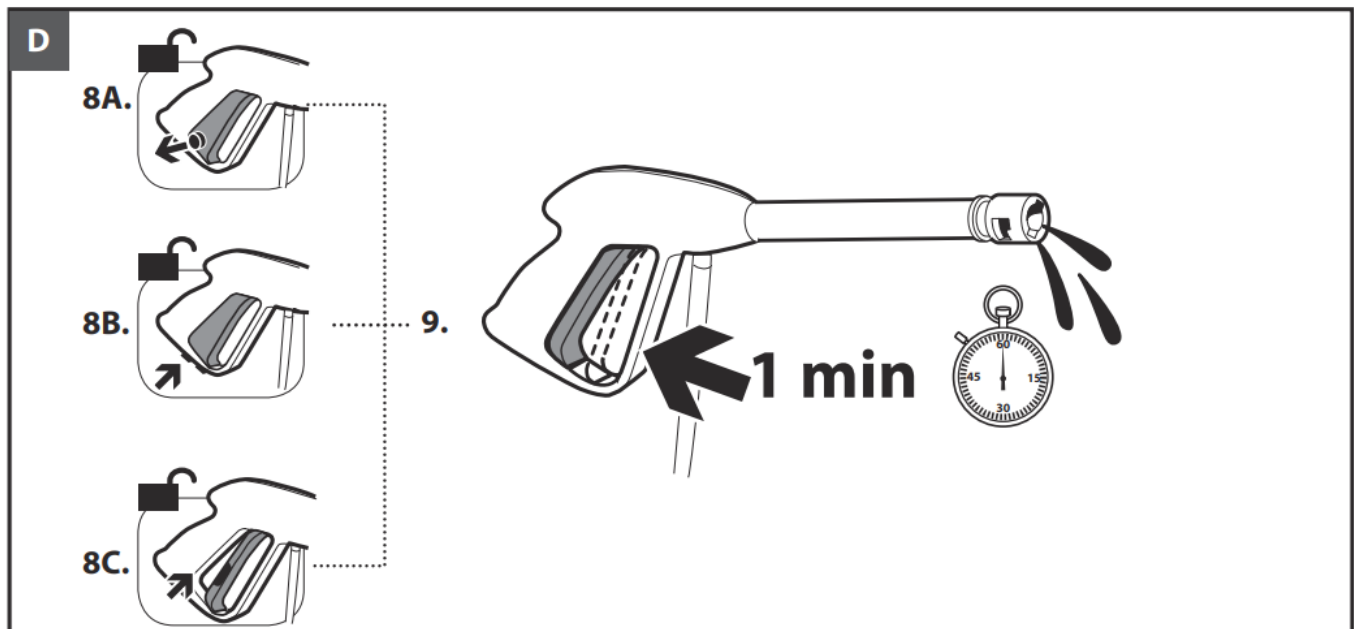
See fig. C





- Screw the coupling element to the water connection on the appliance.
- Attach the water supply hose to the coupling on the water connection.  
NOTE: The supply hose is not included.
- Connect the water supply hose to the water supply.
- Completely open the water tap.
- Insert the mains plug into the socket.
- Turn on the appliance "I/ON".

See fig. D

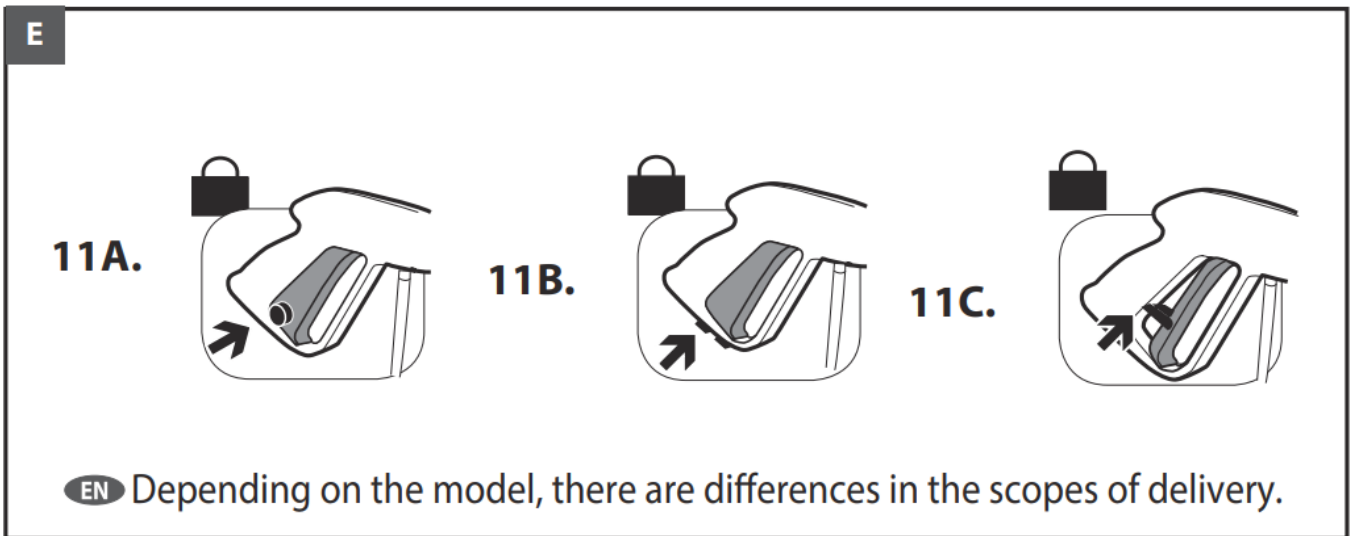


- Unlock the lever on the trigger gun.
- Pull on the lever of the trigger gun; the device will switch on.
- Switch the appliance on for a (max. of 1 minute) and wait until the water exits at the hand spray gun without bubbles.
- Release the lever on the trigger gun.

NOTE: Release the lever of the trigger gun; the device will switch off again.

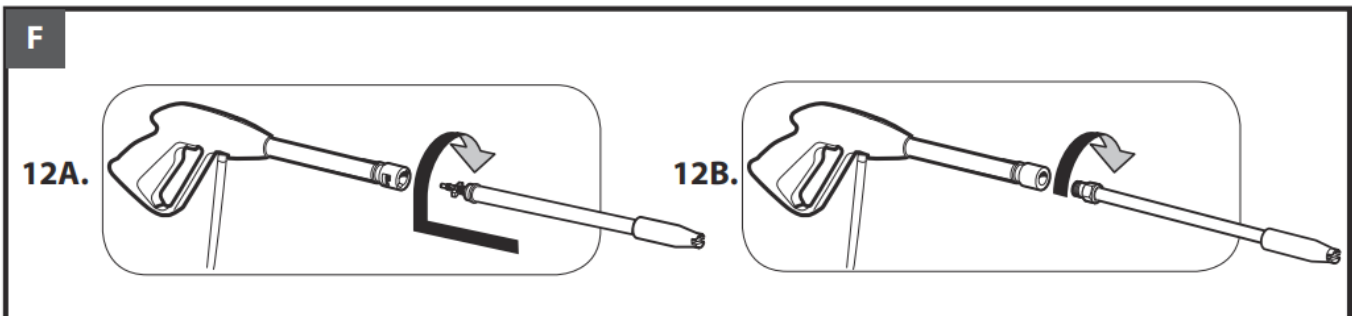
- High pressure remains in the system.

See fig. E



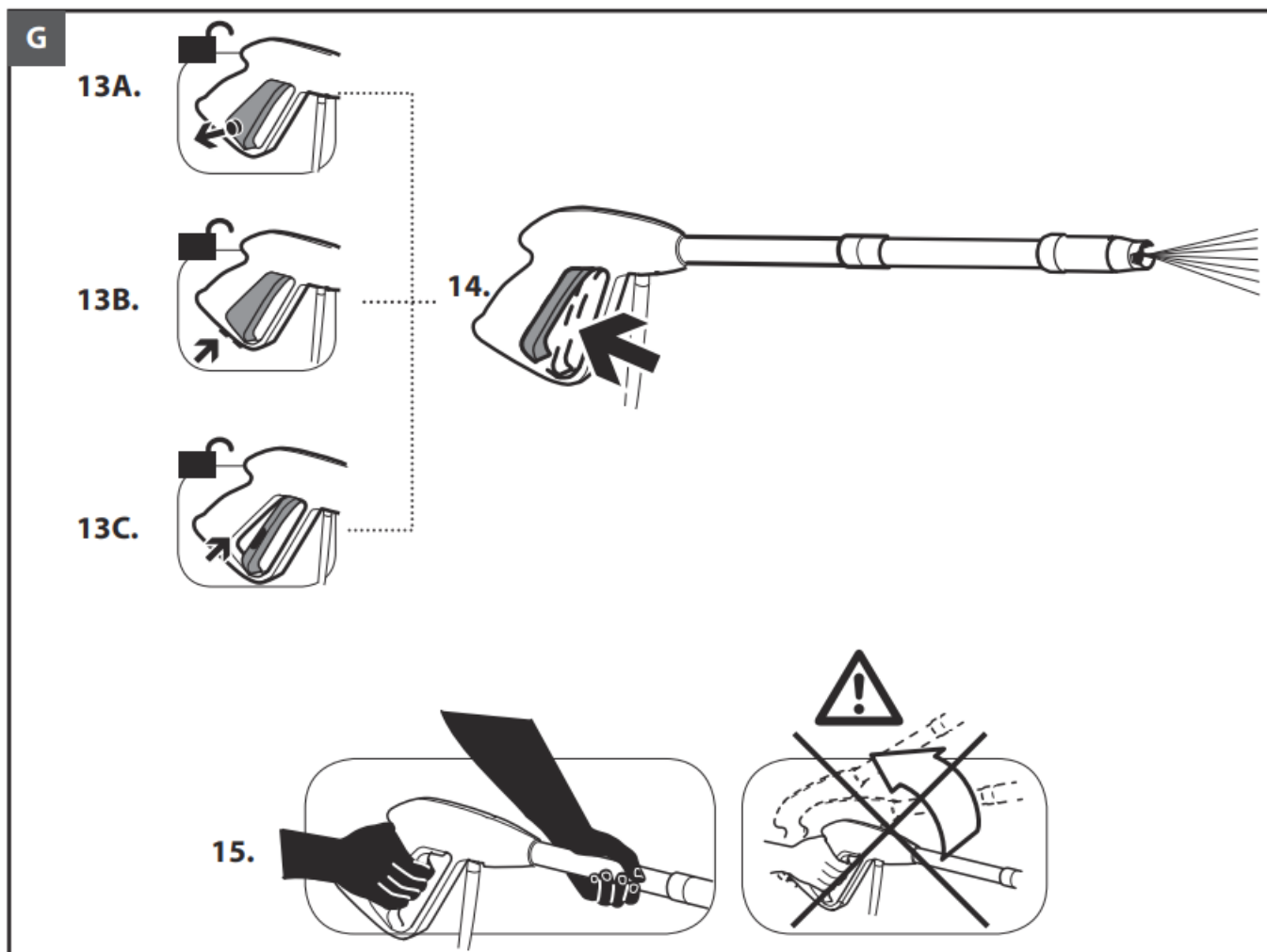
- Lock the lever on the trigger gun.

See fig. F




- Push the spray lance into the trigger gun and fasten it by turning it through 90°.
- Unlock the lever on the trigger gun.

See fig. G

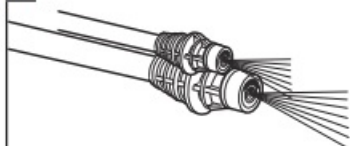


– Pull on the lever of the trigger gun; the device will switch on.

 **14WARNING:** Appliance with fluid under pressure. Keep a firm hold on the gun and be prepared to take the kickback pressure.

See fig. H

H



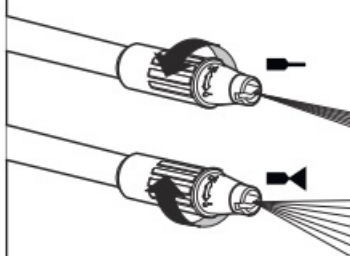
EN Spread pattern



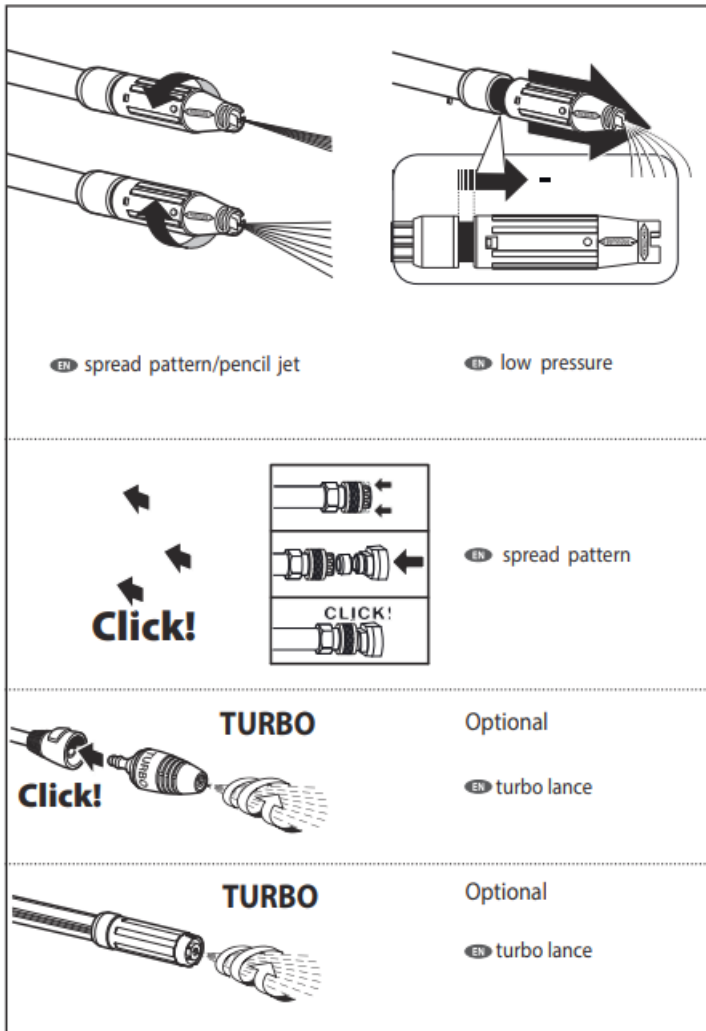
EN spread pattern



EN spread pattern/pencil jet variable



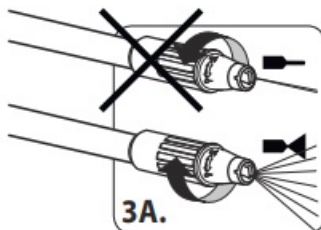
EN spread pattern/pencil jet



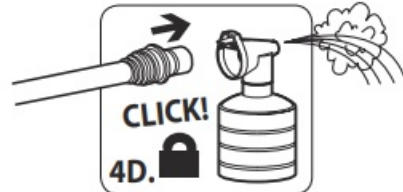
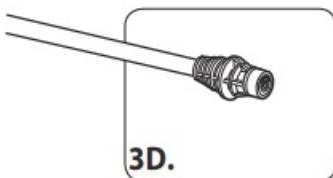
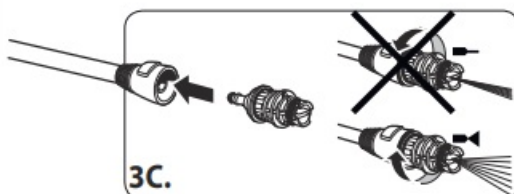
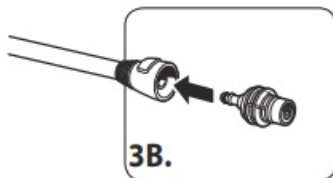
## > HIGH PRESSURE LANCE

See fig. IJK

I



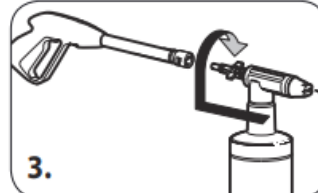
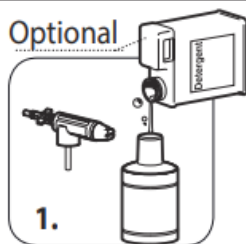
Optional



J

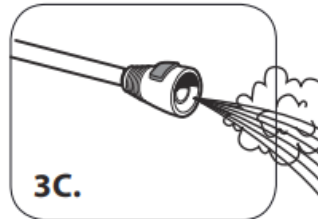
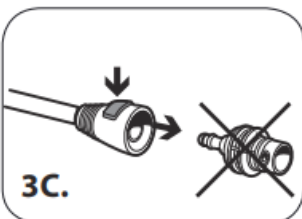
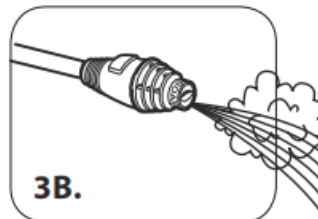
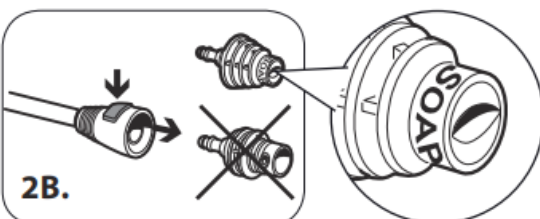
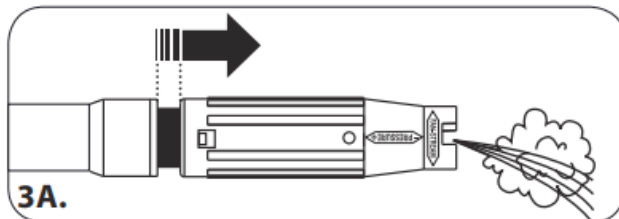
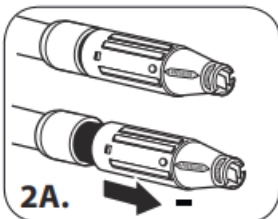
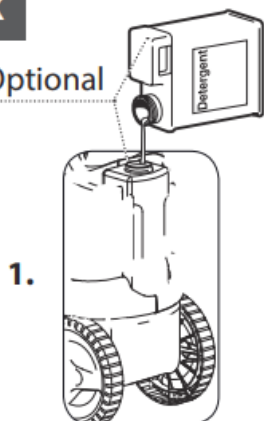


Optional



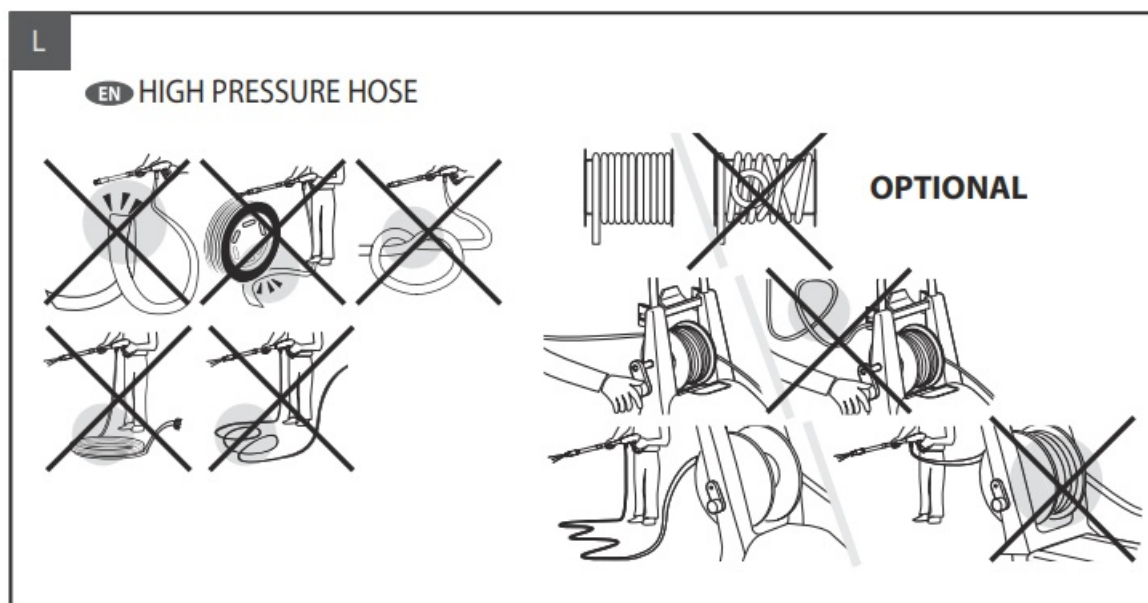
K

Optional



## > DETERGENT SUCTION

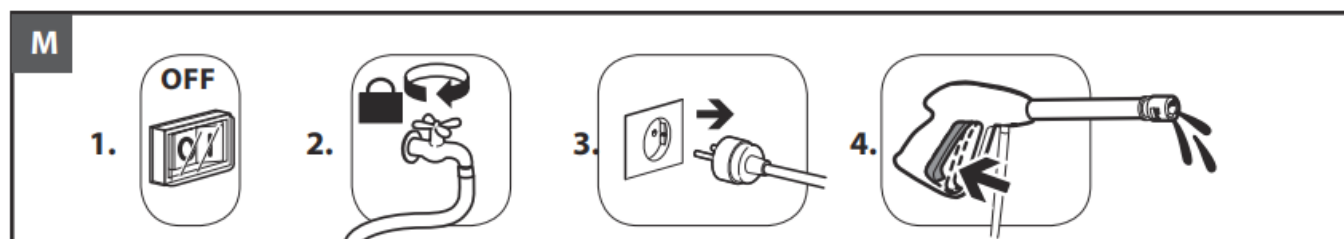
See fig. L



### HIGH PRESSURE HOSE


Use the hydrocleaner only if the hose is completely uncoiled and extended.

See fig. M



## > SWITCHING OFF

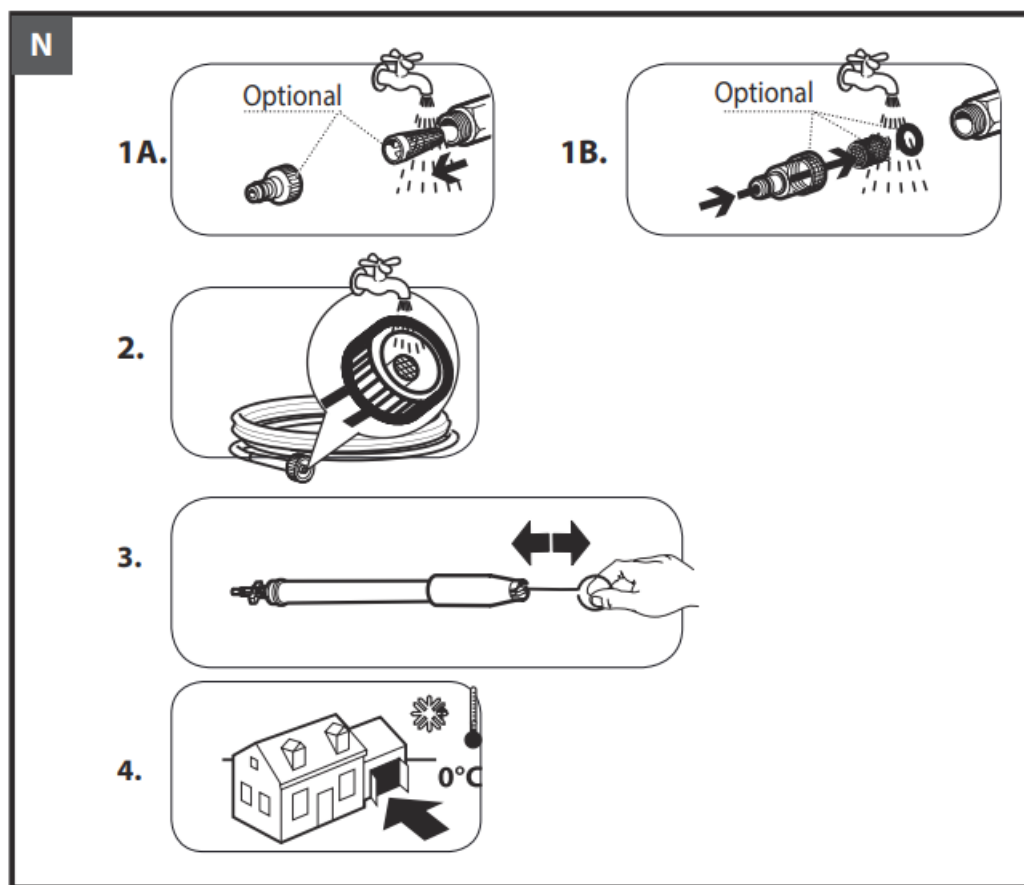
T.S. Total Stop ( if fitted)

 **NOTE:** Total Stop, which stops the machine during the bypass phase. To start the water cleaner, it is therefore necessary to set the switch on position (I) "ON"; after that press the pistol trigger: the Total Stop will start the machine and will stop it automatically when the trigger is released. It is advisable to put on the safety of the pistol trigger whenever the machine is stopped, in order to avoid unintentional starting.


- Any automatic start of the machine without pressing the gun trigger is attributable to air bubbles in the water or other similar phenomena which do not imply the existence of any defects in the machine.
- Do not leave the appliance unattended during the standby for more than 5 minutes. Contrarily, for the safety of the appliance it is necessary to re-turn the switch into the (0) OFF position.
- Please check that the coupling of the high pressure hose with the appliance and the gun supplied as standard equipment made correctly, that is to say without any water leak.


## CARE AND MAINTENANCE

See fig. N



The unit is maintenance-free.

 **XX WARNING:** the machine shall be disconnected from its power source, **by removing the plug from the socket-outlet**, during cleaning or maintenance

 **WARNING:** Do not spray the appliance with water and do not use detergents or aggressive solvents. Machine could be damaged.  
– Clean the exterior part of the machine with a dry cloth.

## STORAGE

See fig. N

- Move the machine only by grasping the carrying handle
  - Store the appliance and the accessories in a frost safe room. authorized customer service.
- Replacement parts
- Use only original spare parts or spare parts suggested by the manufacturer.

## WARRANTY CONDITIONS

All our machines are subjected to strict tests and are covered against manufacturing defects in accordance with



applicable regulations. The warranty is effective from the date of purchase.

**The following are not included in the warranty:** – Parts subject to normal wear. – Rubber parts, charcoal, filters and the accessories and optional accessories. – Accidental damage, caused by transport, neglect or inadequate treatment, incorrect or improper use and installation failing – The warranty shall not cover any cleaning operations to which the operative components may be subjected, such as clogged nozzles and filter blocked due to limestones. This machine is intended to be used for domestic and hobby work: the warranty does not cover any other different kind of use.

## DISPOSAL (WEEE)



As the owner of electrical or electronic equipment, the law (in accordance with the EU Directive 2012/19/EU on waste from electrical and electronic equipment and the national laws of the EU Member States that have implemented this Directive) prohibits you from disposing of this product or its electrical / electronic accessories as municipal solid waste and obliges you to make use of the appropriate waste collection facilities. The product can be disposed of by returning it to the distributor when a new product is purchased. The new product must be equivalent to that being disposed of. Disposing of the product in the environment can cause great harm to the environment itself and human health. The symbol in the figure indicates the urban waste containers and it is strictly prohibited to dispose of the equipment in these containers. Non-compliance with the regulations stipulated in the Directive 2012/19/EU and the decrees implemented in the various EU Member States is administratively punishable.

## TERMS OF WARRANTY SERVICE

1. This Warranty Certificate is the only document that confirms your right to free warranty service. Without presenting this certificate, no claims are accepted. In case of loss or damage, the warranty certificate is not restored.
2. The warranty period for the electric machine is 12 months from the date of sale, during the warranty period the service department eliminates manufacturing defects and replaces parts that have failed due to the fault of the manufacturer free of charge. In the warranty repair, an equivalent operable product is not provided.  
Replaceable parts become property of service providers.  
P.LT is not liable for any damage that may be caused by operation of the electric machine.
3. Only clean tool accompanied with the following duly executed documents: this Warranty Certificate, Warranty Card, with all fields filled out, bearing the stamp of the trade organization and the signature of the buyer, shall be accepted for warranty repair.
4. Warranty repair is not performed in the following cases:
  - in the absence of a Warranty Certificate and a Warranty Card or their incorrect execution;
  - with failure of both a rotor and a stator of the electric engine, charring or melting of primary winding of the welding machine transformer, charging or starting-charging device, with internal parts melting, burn down of electronic circuit boards;
  - if a Warranty Certificate or a Warranty Card does not correspond to this electric machine or to the form established by the supplier;
  - upon expiration of the warranty period;
  - at attempts of opening or repair of the electric machine outside the warranty workshop; making constructive changes and lubrication of the tool during the warranty period, as evidenced, for example, by the creases on the spline parts of the fasteners of non-rotational parts.
  - when using electric tools for production or other purposes connected with making a profit, as well as in case

of malfunctions related to instability of the power network parameters exceeding the norms established by GOST;

- in the events of improper operation (use the electric machine for other than intended purposes, attachments to the electric machine of attachments, accessories, etc. not provided by the manufacturer);
- with mechanical damage to the case, power cord and in case of damages caused by aggressive agents and high and low temperatures, ingress of foreign objects in the ventilation grids of the electric machine, as well as in case of damage resulting from improper storage (corrosion of metal parts);
- natural wear and tear on the parts of the electric machine, as a result of long-term operation (determined on the basis of the signs of full or partial depletion of the specified mean life, great contamination, presence of rust outside and inside the electric machine, waste lubricant in the gearbox);
- use of the tool for purposes other than specified in the operating instructions.
- mechanical damages to the tool;
- in the event of damages due to non-observance of the operating conditions specified in the instruction (see chapter “Safety Precautions” of the Manual).
- damage to the product due to non-observance of the rules of storage and transportation.

Preventive maintenance of electric machines ( cleaning, washing, lubrication, replacement of anthers, piston and sealing rings) during the warranty period is a paid service.

The service life of the product is determined by the manufacturer and is 5 years from the date of manufacture, The owner is notified of any possible violations of the above terms of warranty service upon completion of diagnostics in the service center.

The owner of the tool entrusts the diagnostic procedure to be conducted in the service center in his absence.

Do not operate the electric machine when there are signs of excessive heat, sparking, or noise in the gearbox.

To determine the cause of the malfunction, the buyer should contact the warranty service center.

Malfunctions caused by late replacement of carbon brushes of the engine are eliminated at the expense of the buyer.

5. The warranty does not cover:

- replacement of parts (accessories and furniture), for example: accumulators, disks, knives, drills, bores, cartridges, chains, sprockets, collet clamps, buses, tensioning elements and fasteners, trim tabs, pads of grinders and tape machines, etc.
- quick-wear parts, for example: carbon brushes, drive belts, glands, protective covers, guide rollers, guides/rails, rubber seals, bearings, timing belts and wheels, shafts, brake band, ratchet wheels and starter cables, piston rings, etc. Replacing them during the warranty period is a paid service.
- power cords, in case of insulation damage, power cords are subject to mandatory replacement without the consent of the owner (paid service),
- casing of machine.

**Dear customer!**

Thank you for purchasing the P.I.T tool, and we hope that you will be satisfied with your choice. In the process of manufacturing the P.I. T tools pass multilevel quality control, if nevertheless your product will need maintenance, please contact the authorized P.I.T service centers.

**Attention!**

When buying, ask a seller to check the completeness and operability of the tool, to fill out the Warranty Certificate, the Warranty Card (the boxes shall be filled out by a seller) and to affix the seal of the trade organization in the Guarantee Certificate and the Warranty Card.

**Warranty**

By this Warranty Certificate, P.I.T. company guarantees the absence of defects of the production nature, both in

the product itself and in its constituent components.

In the event any of the above defects are detected during the warranty period, the specialized P.I.T. service centers shall repair the product and replace the defective spare parts free charge.

The warranty period for P.I.T. electric machines is 12 months from the date of sale.

**The warranty maintenance terms acknowledged and accepted. The operability and completeness of the product are checked in my presence. No claims on quality and appearance.”**



<http://www.pit-tools.com>



## Documents / Resources

The cover of the user manual for the P.I.T. PHP120-C High Pressure Washer. It features the P.I.T. logo at the top, followed by the text 'HIGH PRESSURE WASHER' and 'МОНТАЖ, ОБСЛУЖИВАНИЕ И ЭКСПЛУАТАЦИЯ'. Below this, there are three images of the washer in different configurations. At the bottom, it says 'PROGRESSIVE INNOVATIONAL TECHNOLOGY' and 'ПРОГРЕССИВНАЯ ИННОВАЦИОННАЯ ТЕХНОЛОГИЯ'.	<p><a href="#">P I T PHP120-C High Pressure Washer</a> [pdf] User Manual</p> <p>PHP120-C High Pressure Washer, High Pressure Washer, Pressure Washer, Washer, PHP130-C, PHP140-C</p>
--	--

[Manuals+](#).