



OzSpy DRFDCD06 Key Ring Phone and Camera Bug Detector User Manual

[Home](#) » [Support](#) » OzSpy DRFDCD06 Key Ring Phone and Camera Bug Detector User Manual 

Contents

- [1 OzSpy DRFDCD06 Key Ring Phone and Camera Bug Detector](#)
- [2 Using the Device](#)
- [3 Battery Replacement](#)
- [4 DOWNLOAD](#)
- [5 Related Posts](#)

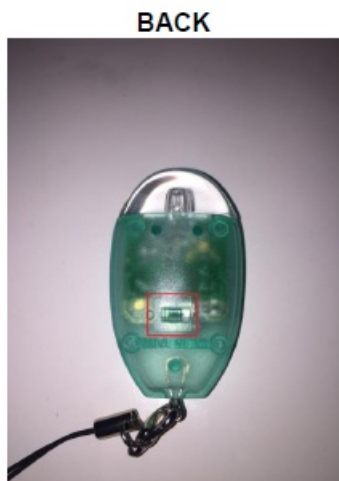
OzSpy DRFDCD06 Key Ring Phone and Camera Bug Detector



USER MANUAL

This compact mobile phone and wireless camera detector uses state of the art technology to detect the presence of active mobile phones (including stealth/ghost phones that may show no visible signs of calls) as well as hidden

wireless cameras (1.2Ghz and 2.4Ghz).



Note: On/Off Switch in red box

Using the Device

- To start using, move the On/Off switch into the 'On' position (marked as '1' on the back of the device) and the LED will start to flash.
- Aim the detector where you want to check for a hidden camera and or wireless microphone in operation.
- If the LED stays solid and no longer flashes, there is either:
 - o WiFi signal detected (2m maximum distance)
 - o Cellular phone in use (5m maximum distance)
- To stop using, move the On/Off switch into the 'Off' position (marked as '0' on the back of the device) and the LED will no longer flash.

If the LED light remains solid when turned on, the battery may need replacement

Battery Replacement

Take a ball point pen, or similar object, and use it to carefully pry the housing apart.



Once the cover is removed, slide the old battery down, away from the LED to Remove it from the unit.



Slide the new battery (CR2032 3V) under the holder and ensure it is sitting all the way in.



Reattached the keyring loop and replace the cover



DOWNLOAD

OzSpy DRFDCD06 Key Ring Phone and Camera Bug Detector User Manual – [[Download PDF](#)]
