



OzSpy HAIXBCL2MP Clock Hidden Camera User Manual

[Home](#) » [OzSpy](#) » OzSpy HAIXBCL2MP Clock Hidden Camera User Manual 

Contents

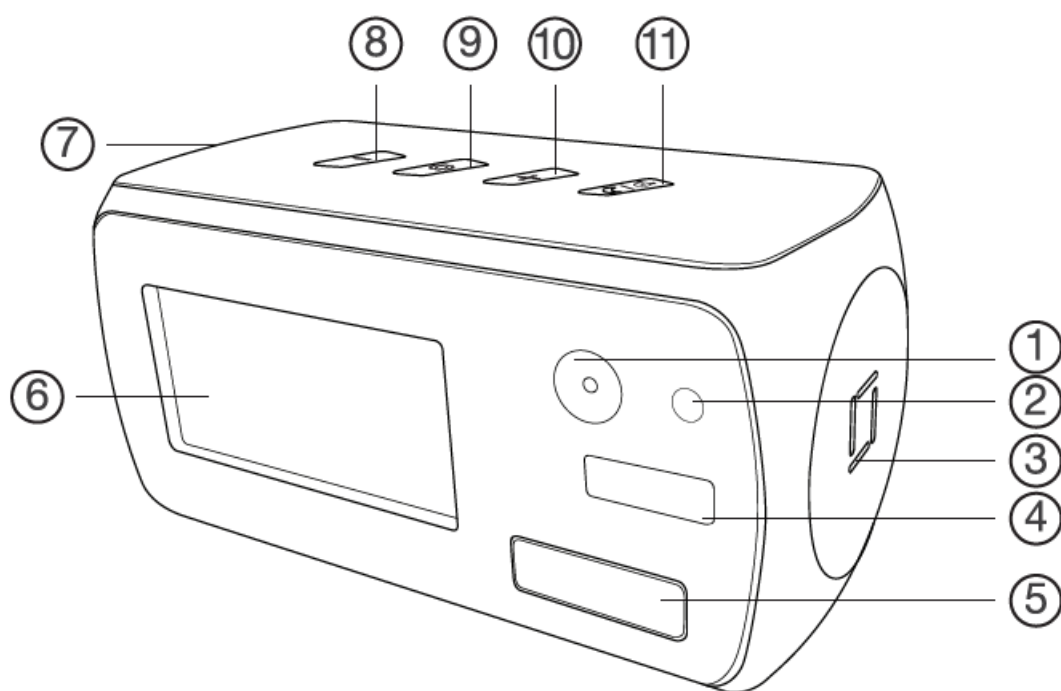
- [1 OzSpy HAIXBCL2MP Clock Hidden Camera](#)
- [2 Product structure](#)
- [3 Quick guide of Wi-Fi camera function](#)
- [4 Overview](#)
- [5 In the box](#)
- [6 Camera Normal Status](#)
- [7 APP Introduction](#)
- [8 FAQ](#)
- [9 Specification](#)
- [10 Documents / Resources](#)
- [11 Related Posts](#)

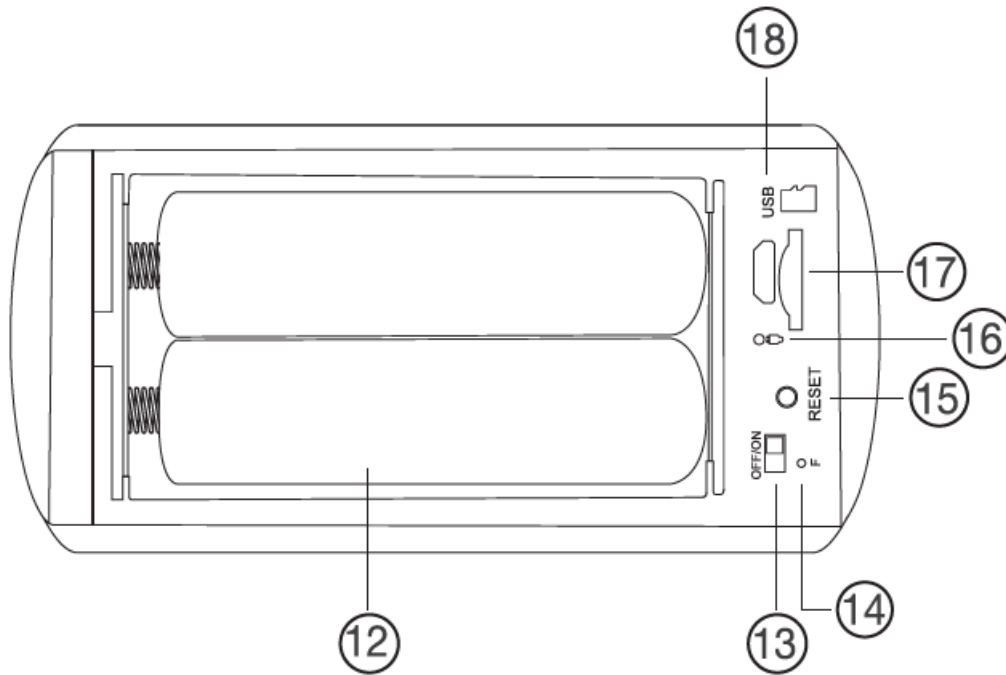


OzSpy HAIXBCL2MP Clock Hidden Camera



Product structure





1. camera
2. Light sensor
3. Clock speaker
4. Invisible night vision leds
5. PIR sensor
6. Time display
7. Camera speaker
8. +-
9. Time setting
10. +-
11. wake up/Alarm switch
12. Batteries
13. ON/OFF switch
14. WiFi indicator
15. Reset key
16. Charging indicator
17. Micro SD card slot
18. USB Port

Quick guide of Wi-Fi camera function

1. Download & Install Free App <CamSC> from App Store or Google Play;
 Tips: Please allow “CamSC” to notification, Bluetooth and location while using the App.
2. Enter App, select your region at the top right corner and register;
 Tips: If a code doesn't arrive, please check the spam folder first.
3. Take off back cover-->Insert micro SD card --> Turn back ON/OFF switch, press reset key 4 seconds till a beep

sound (Pairing mode is ready now).

4. Enter App, Click+ » Smart Home » Pairing Mode » Click device name >> Select Wi-Fi >> Input password > NEXT.
5. Device online in around 10 seconds & Wi-Fi live video is ready. P.S.: Contact local dealer for tutorial video setting up.

Reset key tips:

One press to restart device; 4 seconds press to pair with WiFi (First double beep); 6 seconds press to reset device (Second double beep).

Wi-Fi indicator tips:

Blue LED blinking when pairing with WiFi; Turn off when WiFi paired; Blink once when motion detected.

Charging indicator tips:

Solid red when charging, and off when fully charged.

Clock part setting

/-'.+:- Short press = Wake up (Sleep in 10 seconds when no operation) Long press = Turn off / on alarm

Overview

The Ultra Long Standby WiFi Security Camera, it is built with high tech of super low power consumption 450μA/hour to save energy for around 1 year standby after being fully charged. First, it can be used for watching live streaming video day and night (night vision around 5 meters), or taking photo and video by APP in smart-phone remotely after WiFi connected; Second, its PIR sensor will make precisely motion detect recording for surveillance use (around 5 meters distance and 2 meters height) . Also, it has cycle recording and work when charging.

Usages: Nanny camera, Home/ Shop/ Office/ Warehouse surveillance

In the box

- 1 x Camera Unit
- 1 x Micro SD Card Reader
- 1 x USB Cable
- 1 x User Manual

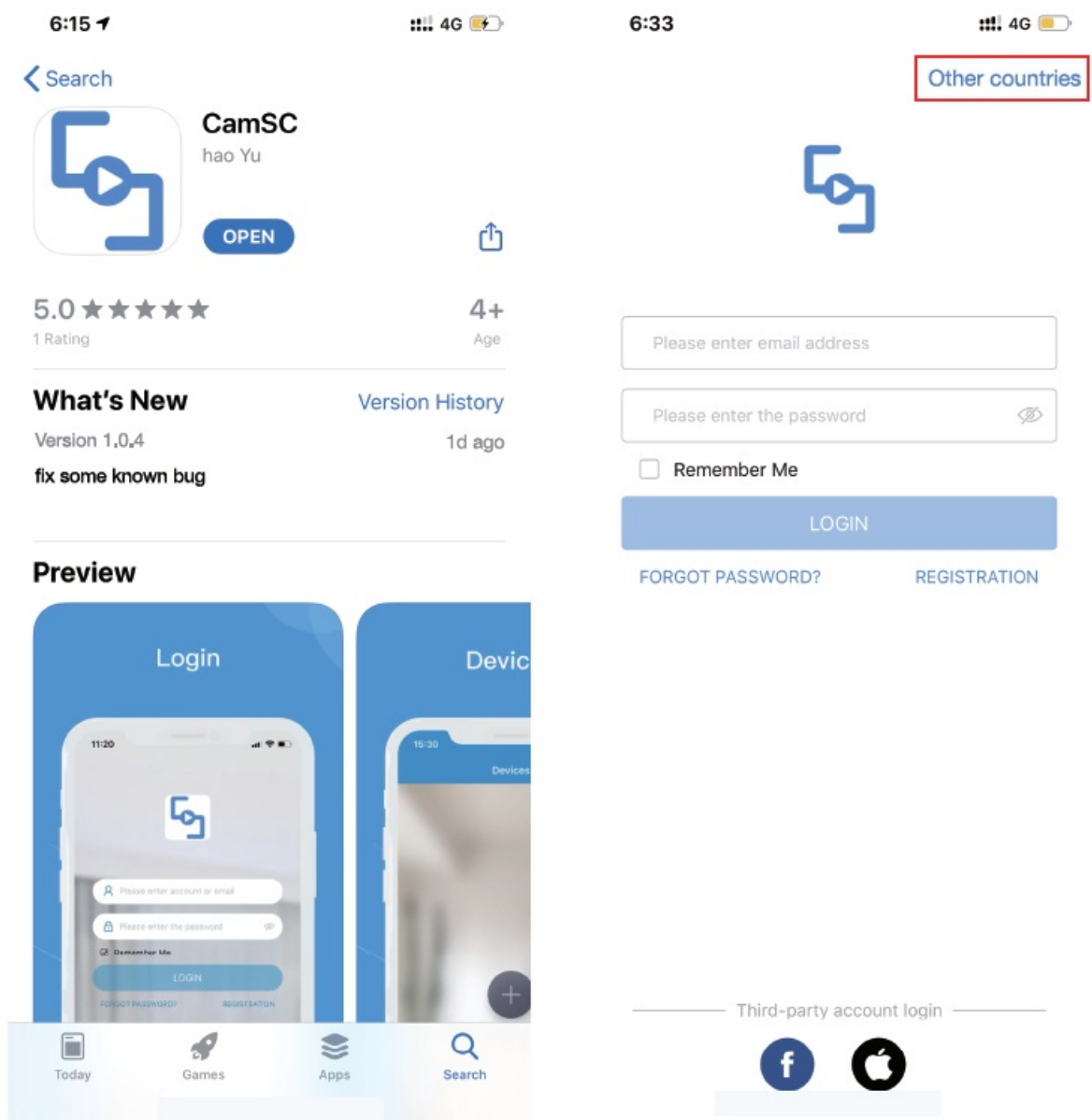
Wi-Fi Camera Connection Setting

Step1: CamSCAPP

1. Scan below QR code or search and download free APP named <CamSC> in Apple APP store, Google play or Electronic market, and install it;

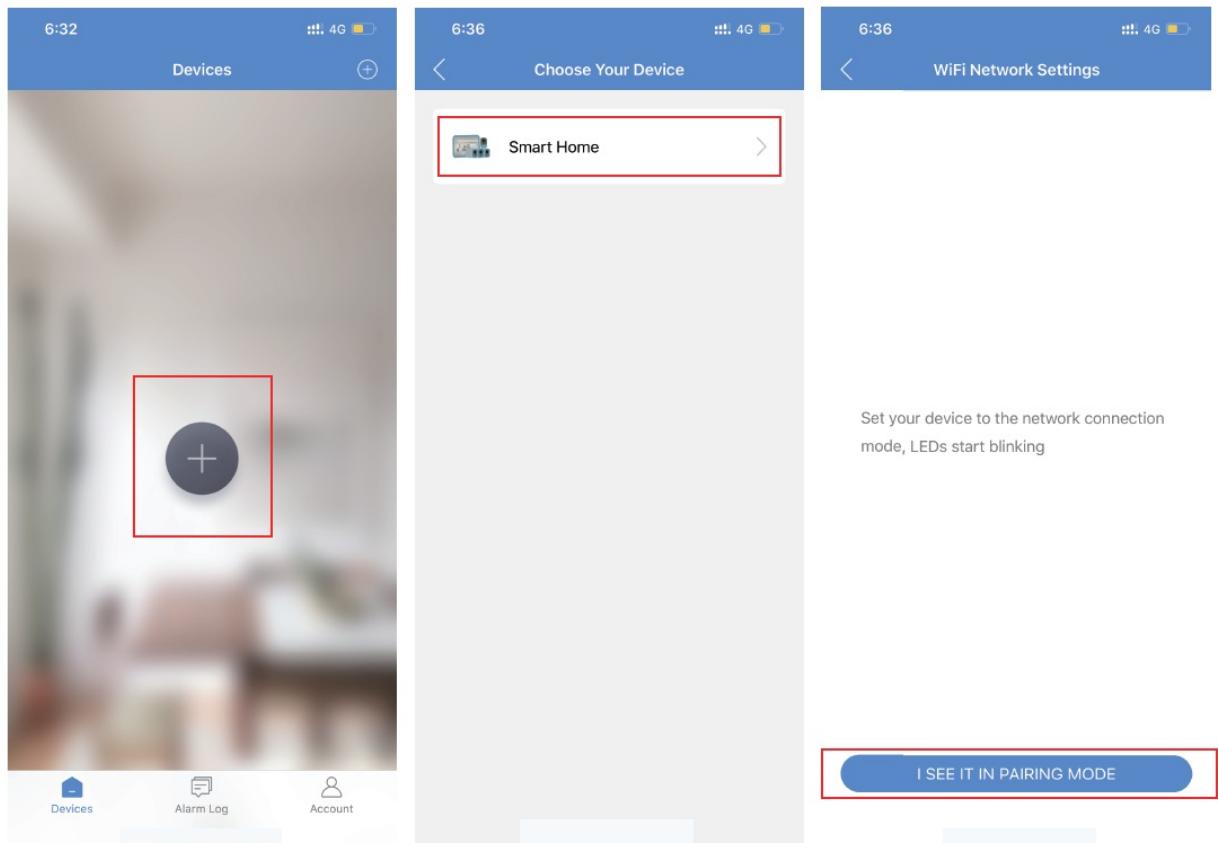


2. Open APP CamSC, select current region at the top right corner. Register with email, or third-party account like Facebook or IOS account. (Tips: If a code doesn't arrive, please check the spam folder first.)

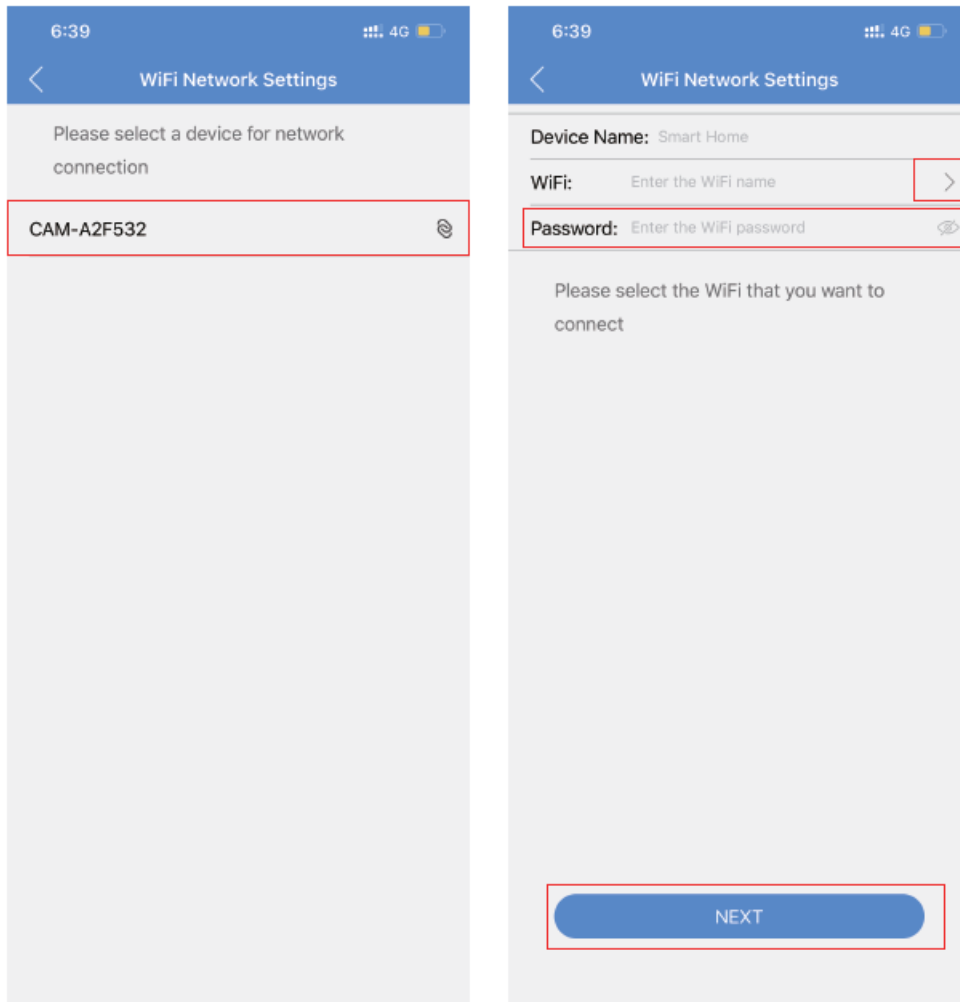


3. Connect WiFi

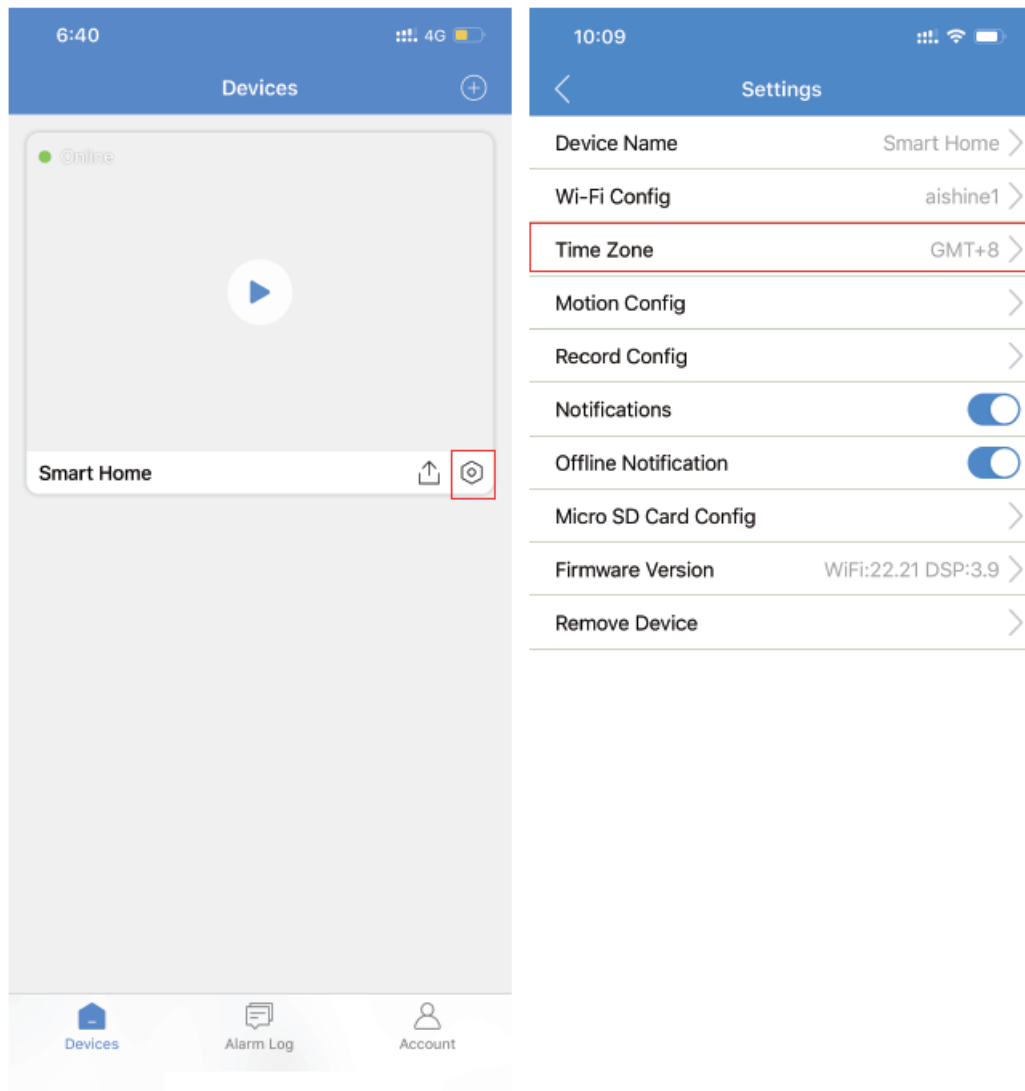
- Press Reset key 4 seconds till a beep sound(WiFi indicator blink slowly and ready for pairing WiFi);
- Open APP CamSC »Click+» Smart Home» Device in pairing mode >> CAM-xxxxxx.



4. Click > at the end of WiFi to select the local router WiFi, then input password. Click NEXT and wait around 10 seconds to finish the configuring; Device Binding Successful and online now.



5. Click @) in APP'S first interface, select Time Zone and choose Time Zone to ensure live streaming video with the set time zone.

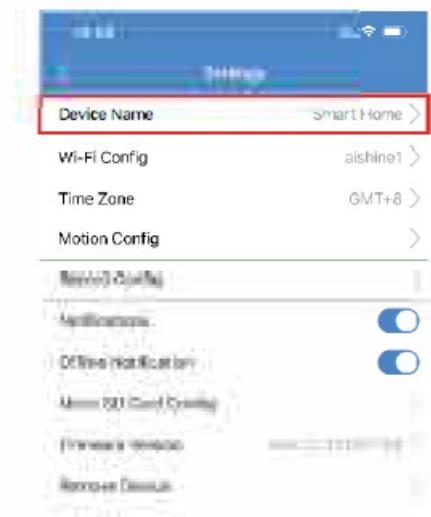


Camera Normal Status

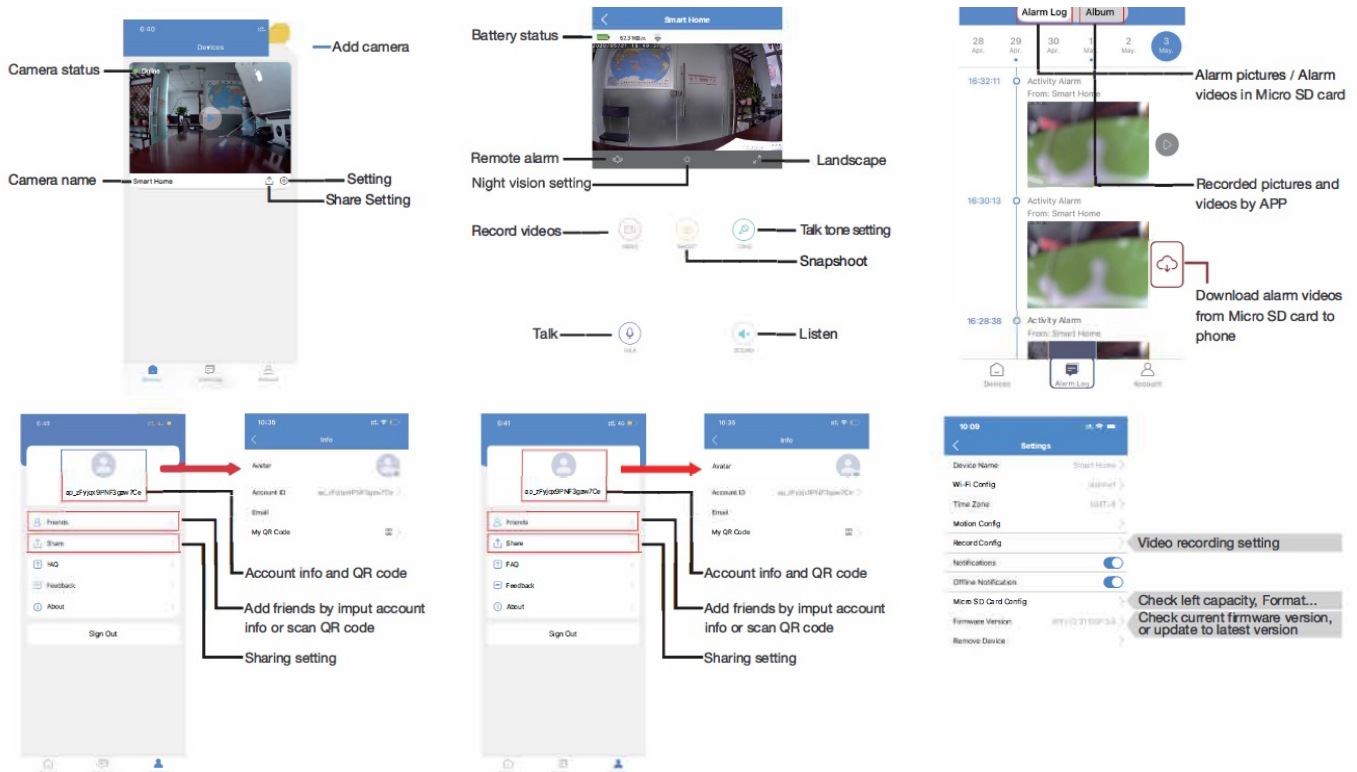
1. Camera always in standby mode;
2. Once motion detected, it will push a notification to phone, do a snapshot and record a 15 seconds video clip into memory card;
3. Sleep and alert after 1 minute once motion detected again.

Set name: Press the @ after the camera, select Device Name → Input needed name like Office, Living room etc

...



APP Introduction



FAQ

1. Is device with offline and low power notification?

Yes.

2. What does the device do when WiFi off?

Keep searching WiFi signal 3mins, 10mins, 1 hour, 2 hours, 5hours,24hours later; If WiFi on, it will be connected to WiFi automatically.


3. If the steps in Page 9 can't move forward (Bluetooth Pairing Mode)?

Delete the App and Download again to test,and agree all permissions (Allow notification, Bluetooth and location).

Specification

Resolution	2 Mega CMOS
Video pixel	1920'1080
Compressed format	H.264
Viewing angle	145 Degree
of memory card	TF card >= Class 4/10 and HC marked
Maximum capacity of memory card	64GB
Mobile phone operation system	Android/iOS
Two way router	2.4G and Mobile hotspot
PIR alarm trigger in server	15 seconds
Static power consumption	520×0μA
Dynamic power consumption	600mAh
Power consumption	350mAh
Resolution with night vision	161m0min
Authe/eye around	24MB
Working time	Around 12 hours
5V/2A	
Power adapter (not include but needed)	

Documents / Resources

	OzSpy HAIXBCL2MP Clock Hidden Camera [pdf] User Manual HAIXBCL2MP, Clock Hidden Camera, HAIXBCL2MP Clock Hidden Camera, Hidden Camera, Camera
---	--