



# OzSpy HAIX1RT2MP Hidden Camera Router User Manual

[Home](#) » [OzSpy](#) » OzSpy HAIX1RT2MP Hidden Camera Router User Manual 

## Contents

- [1 OzSpy HAIX1RT2MP Hidden Camera Router](#)
- [2 Camera Lens with 30° Up View Angle Installation location](#)
- [3 Quick guide on Wi-Fi camera function](#)
- [4 Overview](#)
- [5 In the box](#)
- [6 Product structure](#)
- [7 Wi-Fi Camera Connection Setting](#)
- [8 Camera Normal Status](#)
- [9 APP Introduction](#)
- [10 Specification](#)
- [11 FAQ](#)
- [12 Documents / Resources](#)
- [13 Related Posts](#)



**OzSpy HAIX1RT2MP Hidden Camera Router**



### Camera Lens with 30° Up View Angle Installation location

1. Place on desk great than or equal to 1-meter height;
2. If on a side wall, place at 3-4 meters height;
3. Can be placed on the desk, side wall, and ceiling.

**Tips:** Please take off the transparent protection film on the device and replace it with a black lens cover (Plastic) before using.

### Quick guide on Wi-Fi camera function

- Download & Install Free App <CamSC> from App Store or Google Play;  
**Tips:** Please allow “CamSC” to notify, Bluetooth and location while using the App.
- Enter App, select your region at the top right corner, and register;  
**Tips:** If a code doesn't arrive, please check the spam folder first.
- Take off back cover→Insert micro SD card → Turn back ON/OFF switch, press reset key 4 seconds till a beep sound {Pairing mode is ready now}.
- Enter App, Click + » Smart Home » Pairing Mode » Click device name » Select Wi-Fi » Input password > NEXT.
- The device is online in around 1 second & Wi-Fi live video is ready.

**P .S:** Contact the local dealer for the tutorial video setup.

### Overview

The Ultra Long Standby WiFi Security Camera, it is built with the high tech of super low power consumption 450μNhour to save energy for around half a year standby after being fully charged. First, it can be used for watching live streaming video day and night (night vision around 5 meters), or taking photos and videos by APP

on a smart-phone remotely after WiFi is connected; Second, its PIR sensor will make precise motion detection recordings for surveillance use (around 5 meters in distance and 2 meters in height). Also, it has a cycle recording and works when charging.

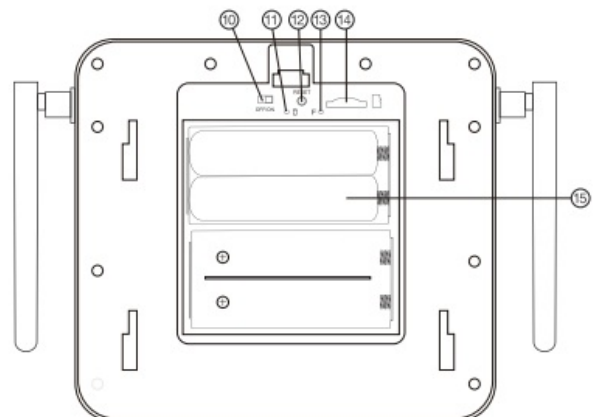
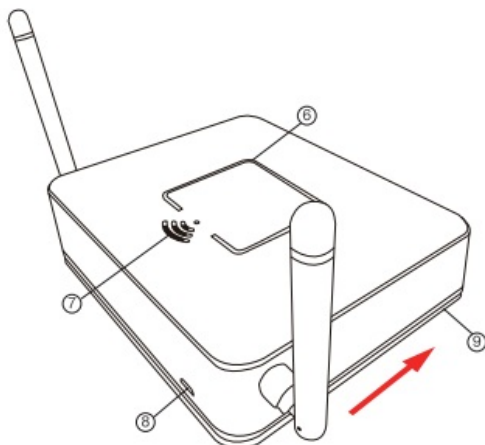
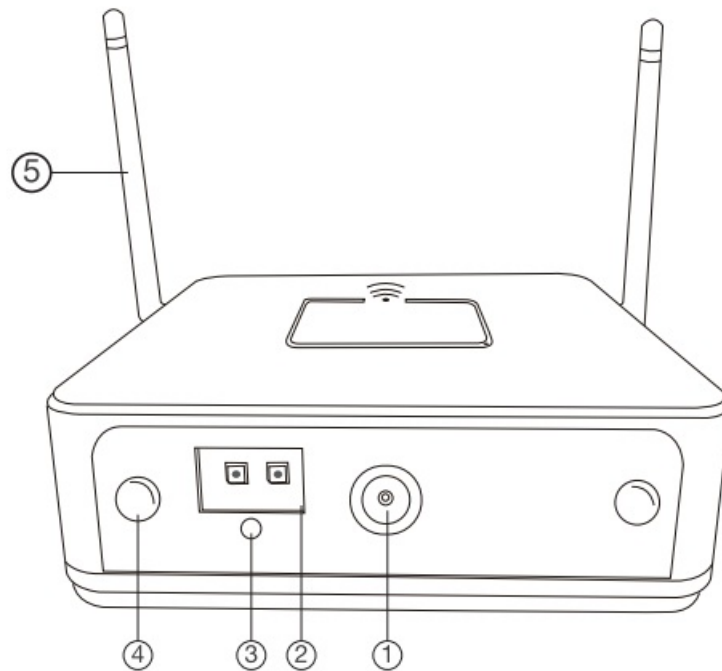
**Usages:** Nanny camera, Home/ Shop/ Office/ Warehouse surveillance camera.

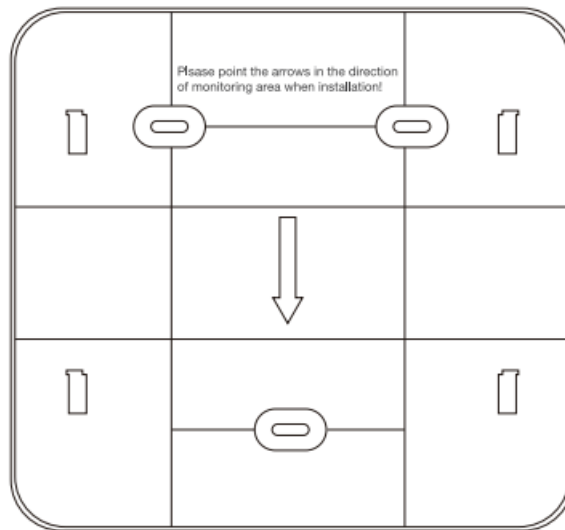
**Warning:** " illegal 11 use is not allowed! Or, there will be consequences to bear! to bear! to bear!

## In the box

- 1 x Micro SD Card Reader
- 1x Camera Unit
- 1x User Manual 2 x Batteries Inside Device (Default) 3 x Screws
- 1x USB Cable

## Product structure





1. camera
2. Invisible night vision LEDs
3. Light sensor
4. PIR PIR sensor
5. Antenna

1. **TIPS:** Push the bottom cover right to open.

6. Mic
7. Camera speaker
8. USB port
9. Bottom cover
10. ON/OFF switch
11. Charging indicator
12. Reset key
13. WiFi indicator
14. Micro SD card slot
15. 2xBatteries inside the device(Default)

**TIPS:** Please point the arrows in the direction of the monitoring area when installation!

### Reset key tips

- One press to restart the device;
- 4 seconds press to pair with WiFi (First double beep);
- 6 seconds press to reset the device (Second double beep).

### Wi-Fi indicator tips

- Blue LED blinking when pairing with WiFi;
- Turn off when WiFi paired;
- Blink once when motion is detected.

### Charging indicator tips

Solid red when charging, and off when fully charged.

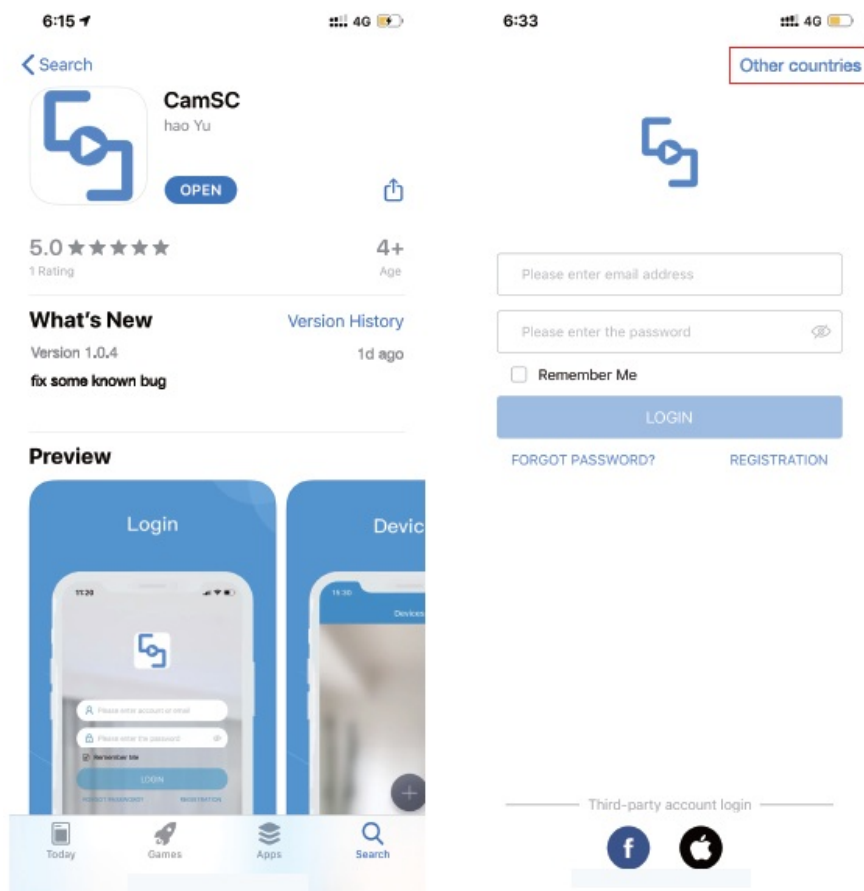
## Wi-Fi Camera Connection Setting

### Step1: CamSC APP

1. Scan below QR code or search and download a free APP named <CamSC> in the Apple APP store, Google play, or Electronic market, and install it;



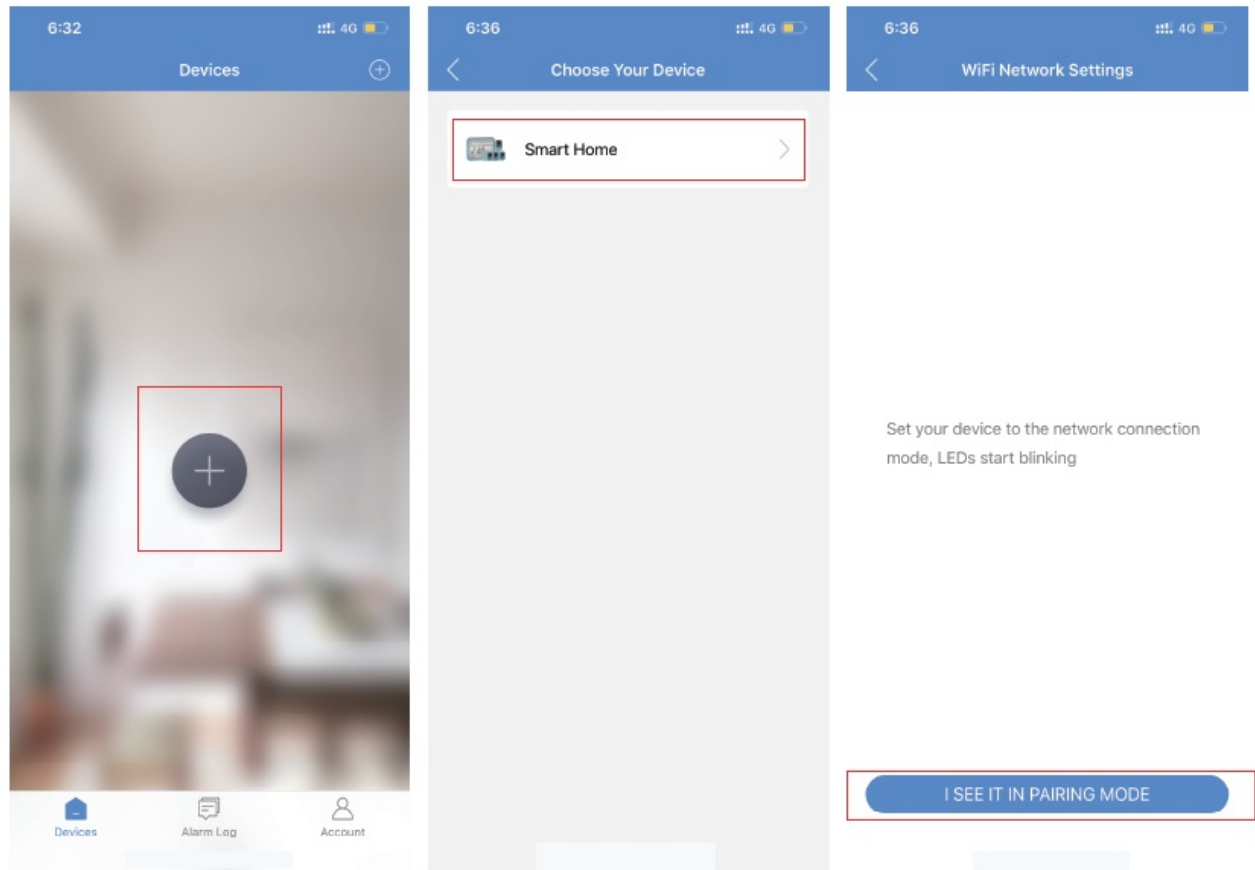
2. Open APP CamSC, select the current region at the top right corner, and Register with email, or a third-party account like Facebook or IOS account. (Tips: If a code doesn't arrive, please check the spam folder first)



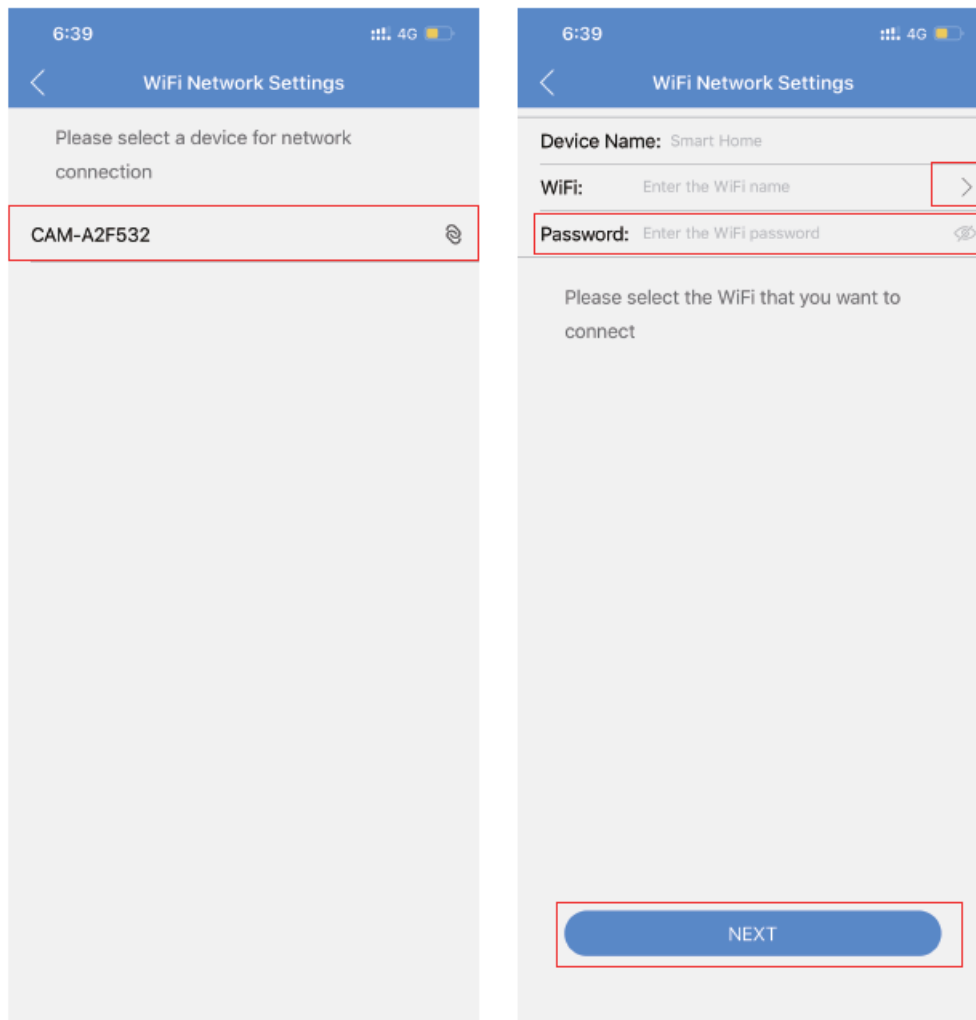
**Step 2:** Take off back cover→ Insert micro SD card → Turn back ON/OFF switch (WiFi indicator is solid blue.);

### Step 3:Connect WiFi

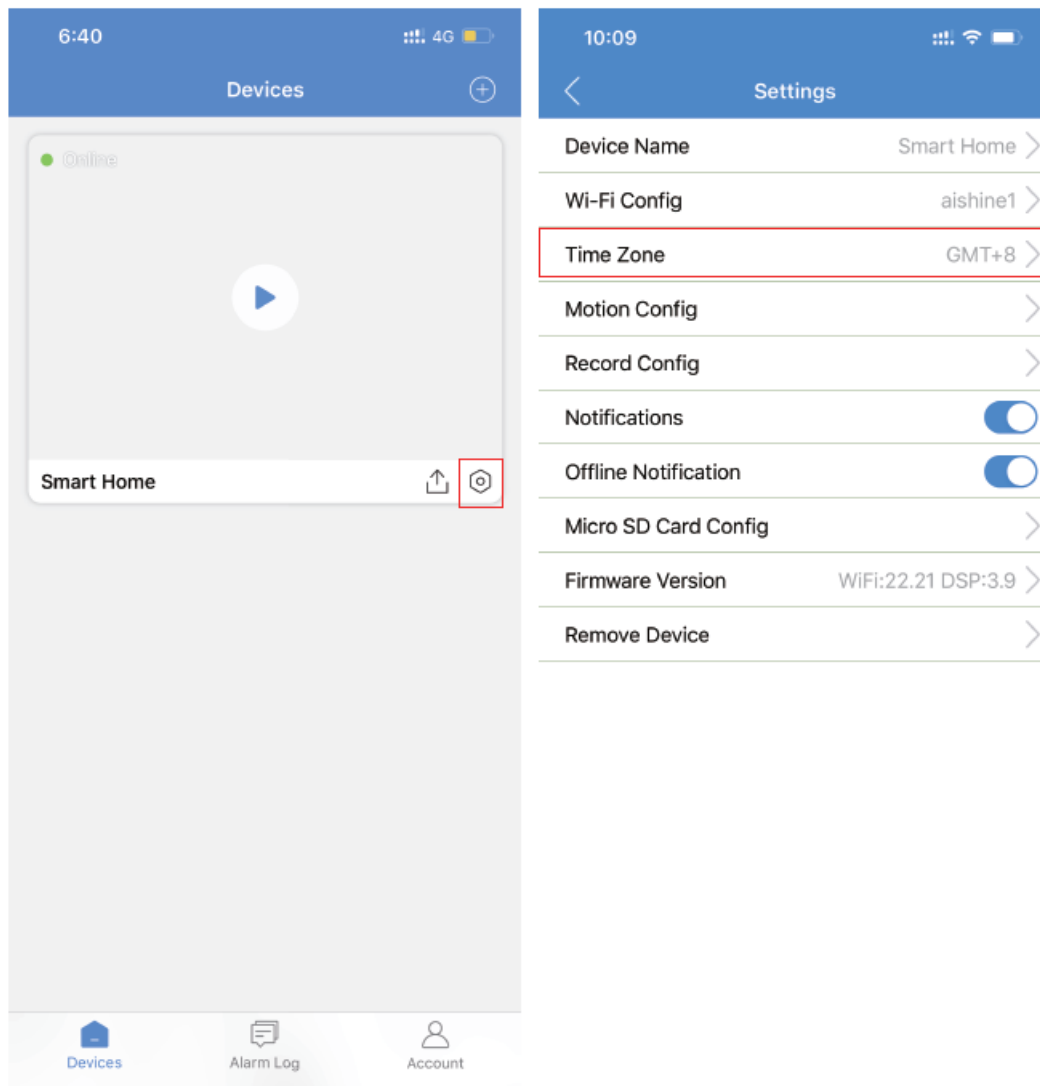
- Press the Reset key 4 seconds till a beep sound(WiFi indicator blink slowly and ready for pairing WiFi);
- Open APP CamSC » Click + » Smart Home » Device in pairing mode >> CAM-xxxxxx.



Click > at the end of WiFi to select the local router WiFi, then input password. Click NEXT and wait around 10 seconds to finish the configuring; Device Binding Successful and online now.



Click setting in APP'S first interface, select Time Zone and choose Time Zone to ensure live streaming video with the set time zone.



## Camera Normal Status

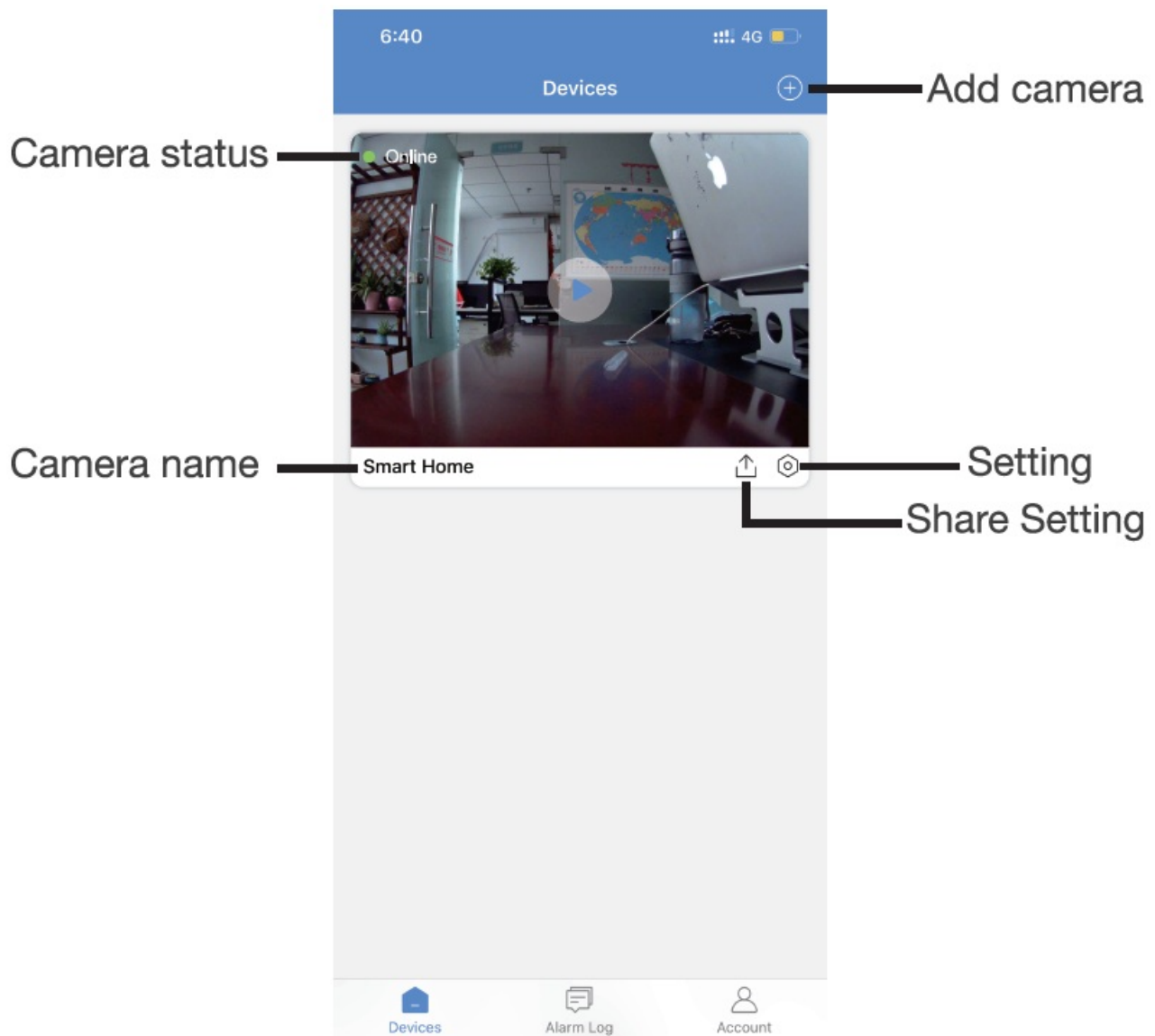
1. The camera is always in standby mode;
2. Once motion is detected, it will push a notification to the phone, do a snapshot and record a 15 seconds video clip into the memory card;
3. Sleep and alert after 1 minute once motion is detected again.

**Set name:** Press the setting after the camera, select Device Name → Input needed name like Office, Living room, etc

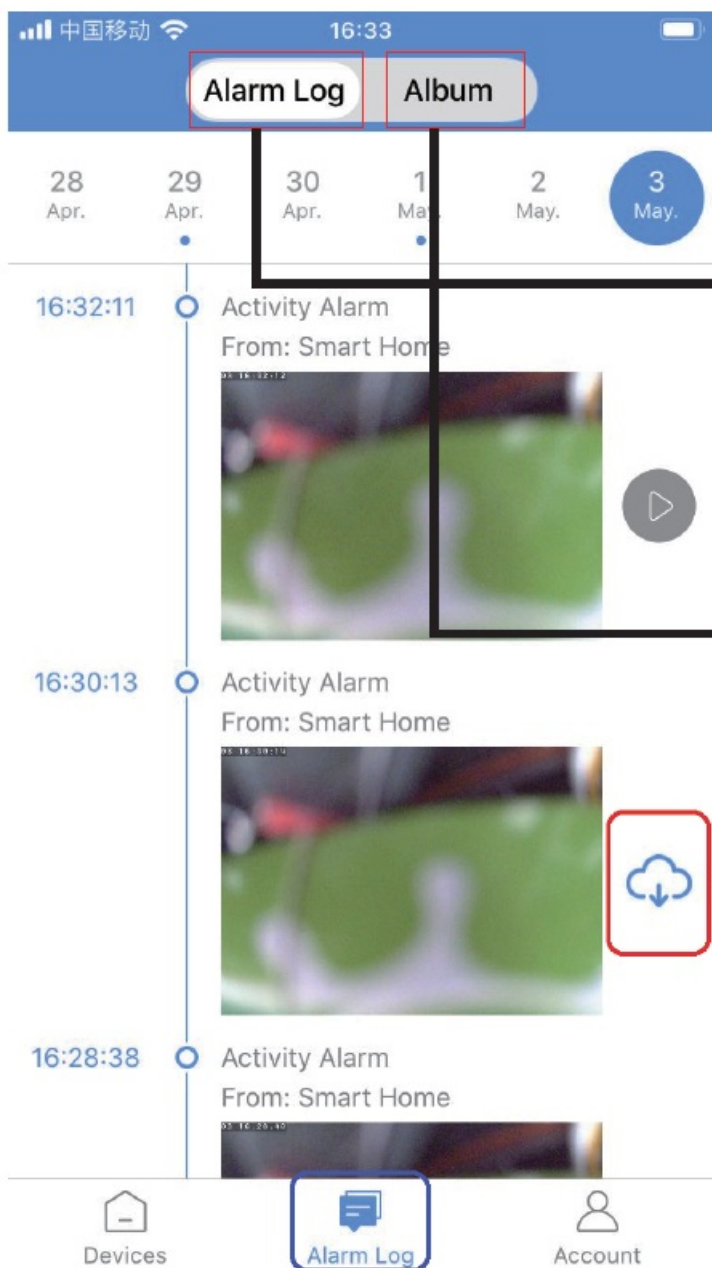




## APP Introduction



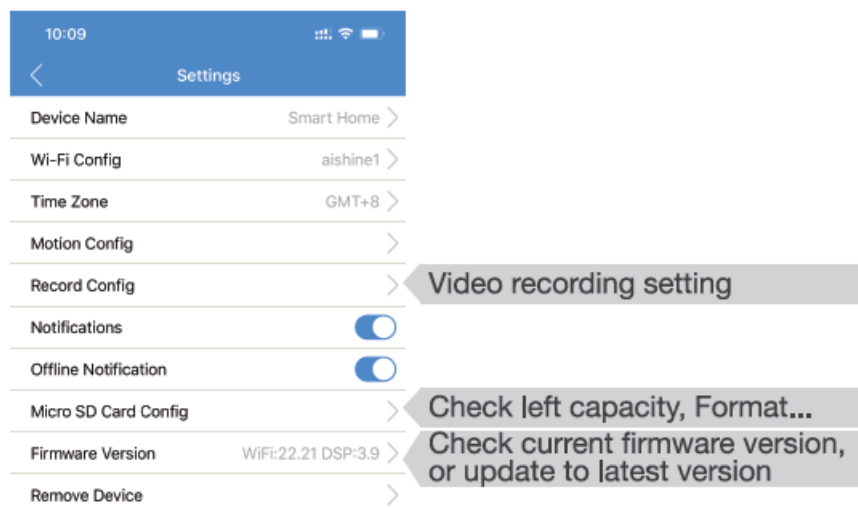
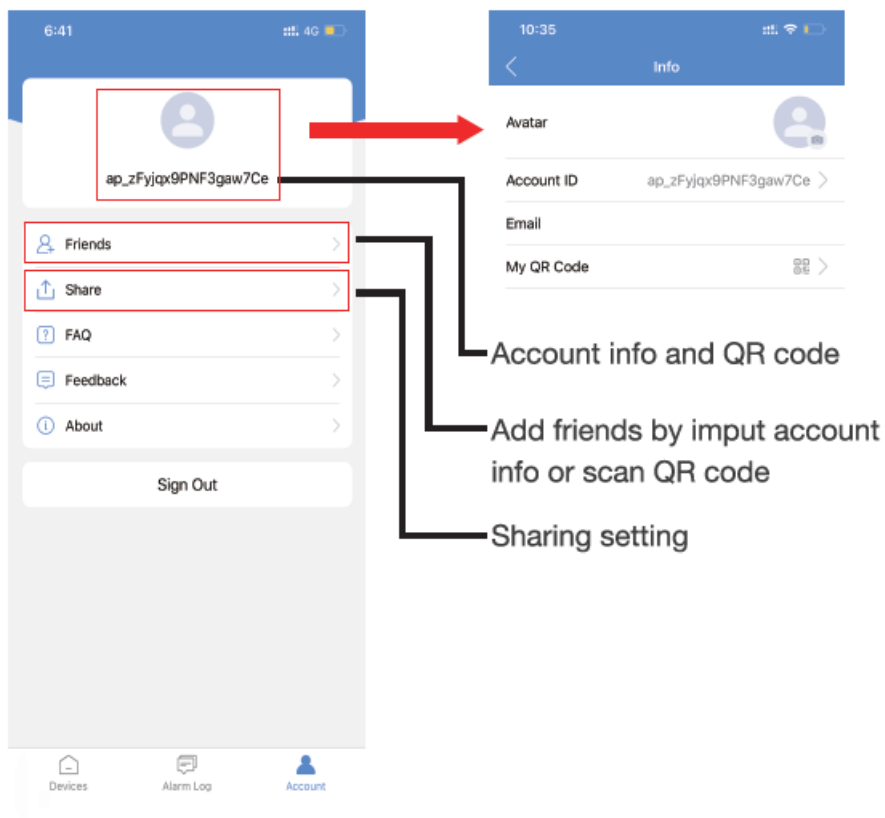




Alarm pictures / Alarm videos in Micro SD card

Recorded pictures and videos by APP

Download alarm videos from Micro SD card to phone



## Specification

Resolution	2 Mega CMOS
Video pixel	1920*1080

<b>Compressed format</b>	<b>H.264</b>
<b>View angle</b>	<b>145 Degree</b>
<b>Type of memory card</b>	<b>TF card&gt;=Class 4/10 and HC marked</b>
<b>Maximum capacity of memory card</b>	<b>64GB</b>
Mobile phone operation system	<b>Android/iOS</b>
Compatible router	<b>2.4G and Mobile hotspot</b>
Two way talking	<b>Yes</b>
<b>PIR</b> alarm pictures in server	<b>15days</b>
Battery capacity	<b>2 x 2600mAh(Default)</b>
	<b>4 x 2600mAh(Optional)</b>

Standby power consumption	<b>500µA</b>
Power consumption	350mAh
Power consumption with night vision	610mAh
<b>Recording</b>	1 minute/ around <b>24MB</b>

<b>Standby time x 2 batteries</b>	<b>Around 1 year</b>
<b>Charging time x 2 batteries</b>	<b>Around 12 hours</b>
<b>Standby time x 4 batteries</b>	<b>Around two year</b>
Charging time x 4 batteries	Around 24 hours
<b>Power adapter (not included but needed)</b>	<b>5V / 2A</b>

## FAQ

### 1. Is the device with offline and low power notification?

- Yes.

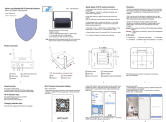
### 2. What does the device do when WiFi is off?

- Keep searching for WiFi signal 3mins, 10mins, 1 hour, 2 hours, 5 hours, 24 hours later; If WiFi is on, it will be connected to WiFi automatically.

### 3. If the steps on Page 11 can't move forward (Bluetooth Pairing Mode)?

- Delete the App and Download again to test, and agree on all permissions (Allow notification, Bluetooth, and location).

## Documents / Resources



## [OzSpy HAIX1RT2MP Hidden Camera Router](#) [pdf] User Manual

HAIX1RT2MP, Hidden Camera Router, HAIX1RT2MP Hidden Camera Router, Camera Router, Router