



OzSpy HAIX1PR2MP Hidden Camera PIR Instruction Manual

[Home](#) » [OzSpy](#) » OzSpy HAIX1PR2MP Hidden Camera PIR Instruction Manual 

Contents

- [1 OzSpy HAIX1PR2MP Hidden Camera PIR](#)
- [2 Quick guide on Wi-Fi camera function](#)
- [3 Overview](#)
- [4 In the box](#)
- [5 Product structure](#)
- [6 Wi-Fi Camera Connection Setting](#)
- [7 APP Introduction](#)
- [8 Specification](#)
- [9 FAQ](#)
- [10 Documents / Resources](#)
- [11 Related Posts](#)



OzSpy HAIX1PR2MP Hidden Camera PIR



Tips: Please take off the transparent protection film on the device and replace it with a black lens cover (Plastic) before using.

Quick guide on Wi-Fi camera function

- Download & Install Free App <CamSC> from App Store or Google Play;
Tips: Please allow “CamSC” to notify, Bluetooth and location while using the App.
- Enter App, select your region at the top right corner, and register;
Tips: If a code doesn't arrive, please check the spam folder first.
- Take off back cover—>Insert micro SD card —> Turn back ON/OFF switch, press reset key 4 seconds till a beep sound {Pairing mode is ready now}.
- Enter App, Click + » Smart Home » Pairing Mode » Click device name » Select Wi-Fi » Input password > NEXT.
- The device on line in around 1 second & Wi-Fi live video is ready.

P.S.: Contact the local dealer for the tutorial video setup.

Overview

The Ultra Long Standby WiFi Security Camera, it is built with high tech of super low power consumption 450μNhour to save energy for around half a year standby after being fully charged.

First, it can be used for watching live streaming video day and night (night vision around 5 meters), or taking photo and video by APP in a smart-phone remotely after WiFi is connected;

Second, its PIR sensor will make precise motion detection recording for surveillance use (around 5 meters in distance and 2 meters height) . Also, it has cycle recording and works when charging.

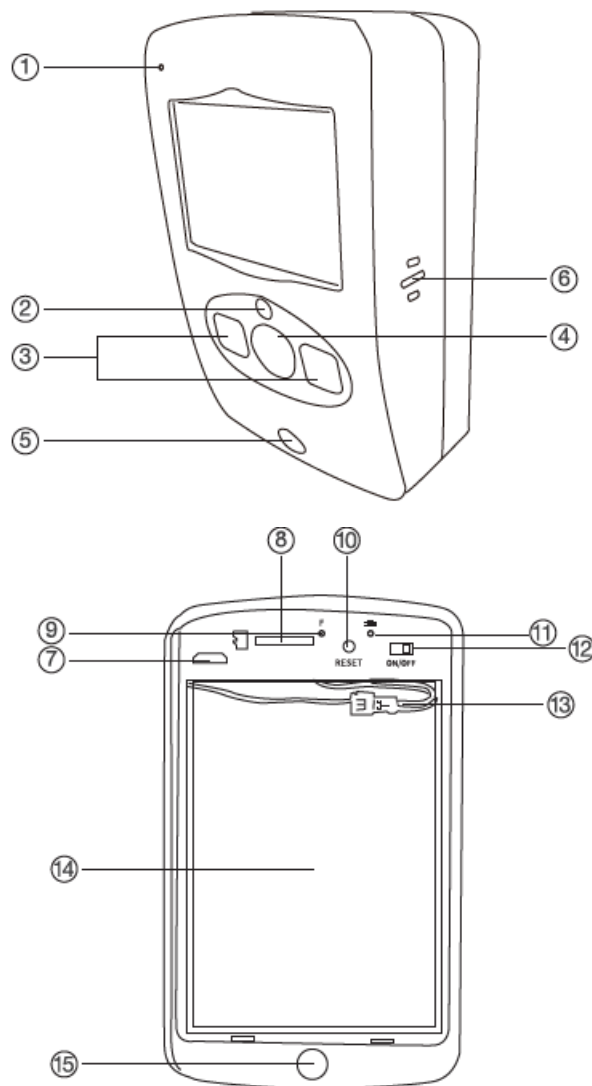
Usages: Nanny camera, Home/ Shop/ Office/ Warehouse surveillance camera

Warning : " illegal 11 use is not allowed! Or, there will be consequences to bear! to bear! to bear!

In the box

- 1 x Camera Unit
- 1 x Micro SD Card Reader
- 1 x USB Cable
- 1 x User Manual
- 1 x Bracket Accessories

Product structure



1. Microphone
2. Light sensor
3. Invisible night vision leds
4. Camera
5. PIR sensor
6. Camera speaker
7. USB charging port
8. WiFi indicator
9. Charging indicator
10. Battery connect part

11. Bracket connect part
12. Micro SD card slot
13. Reset key
14. ON/OFF switch
15. Battery

Reset key tips:

- One press to restart the device;
- 4 seconds press to pair with WiFi (First double beep);
- 6 seconds press to reset the device (Second double beep).

Wi-Fi indicator tips:

- Blue LED blinking when pairing with WiFi;
- Turn off when WiFi paired;
- Blink once when motion is detected.

Charging indicator tips:

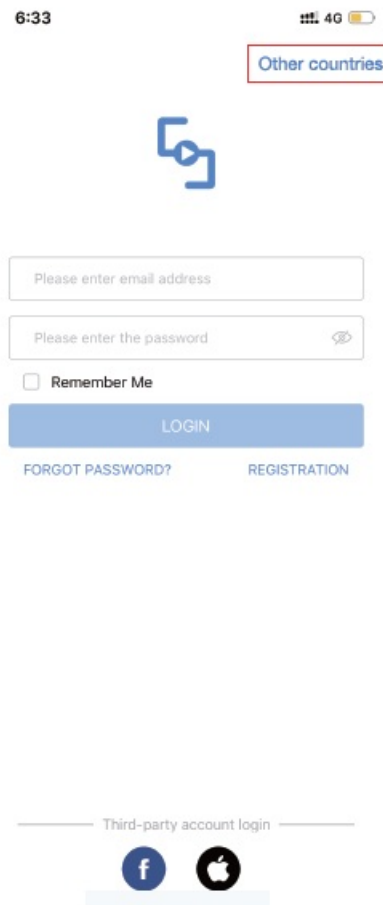
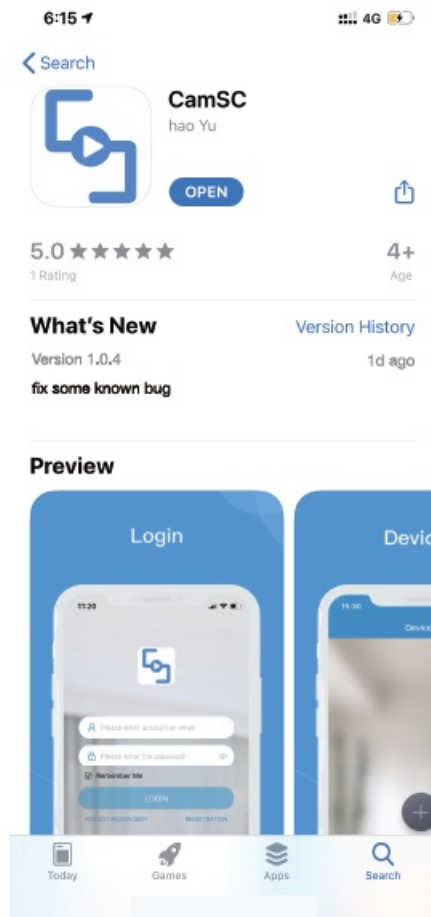
Solid red when charging, and off when fully charged.

Wi-Fi Camera Connection Setting**Step1: CamSC APP**

1. Scan below QR code or search and download free APP named <CamSC> in Apple APP store, Google play or Electronic market, and install it;



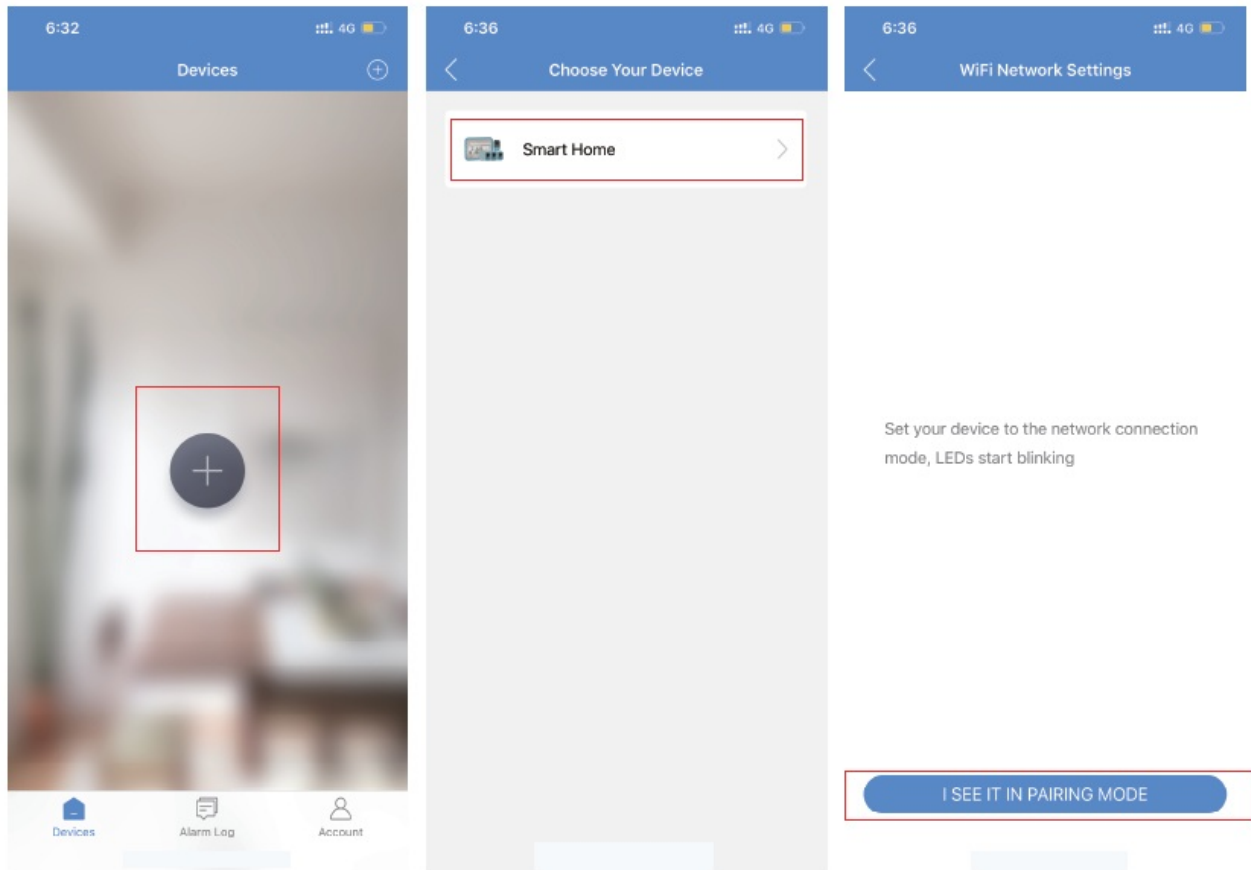
2. Open APP CamSC, select current region at the top right corner, Register with email, or third-party account like Facebook or IOS account. (Tips: If a code doesn't arrive, please check the spam folder first)



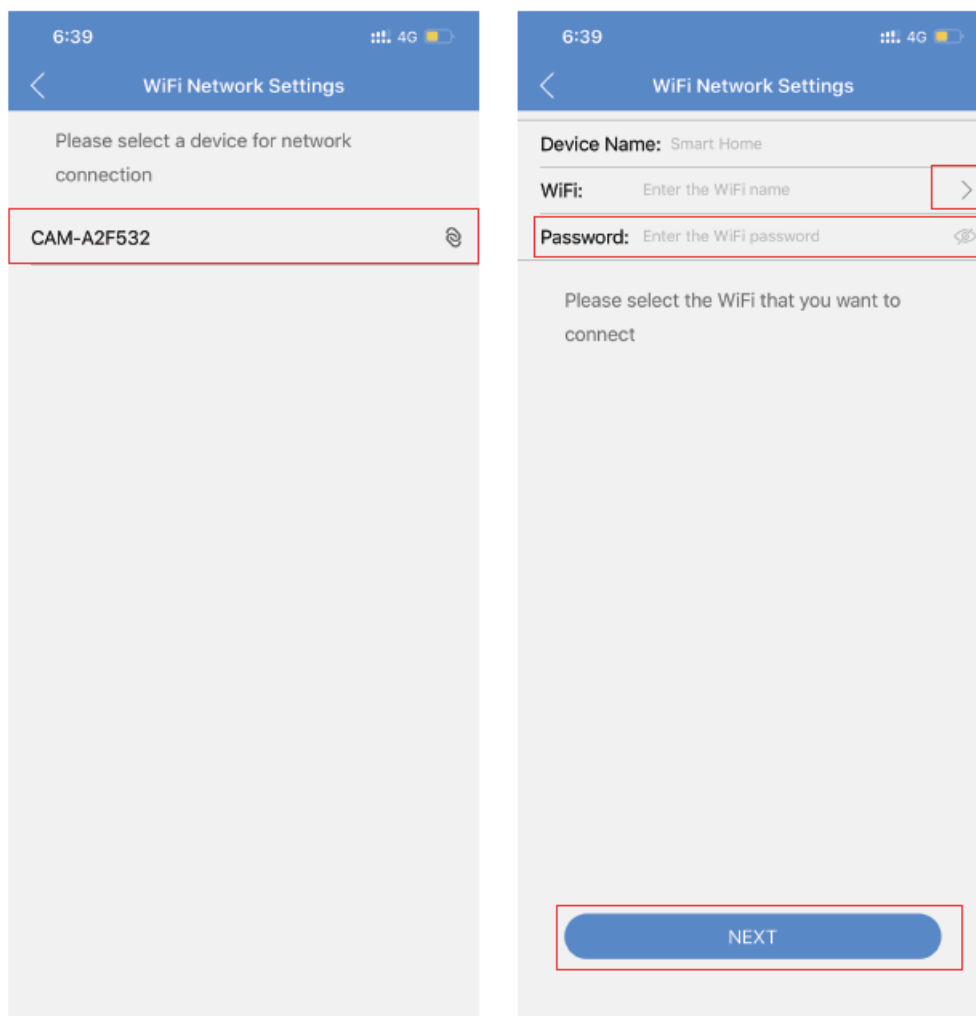
Step 2: Take off back cover→ Insert micro SD card → Turn back ON/OFF switch (WiFi indicator is solid blue.);

Step 3:Connect WiFi

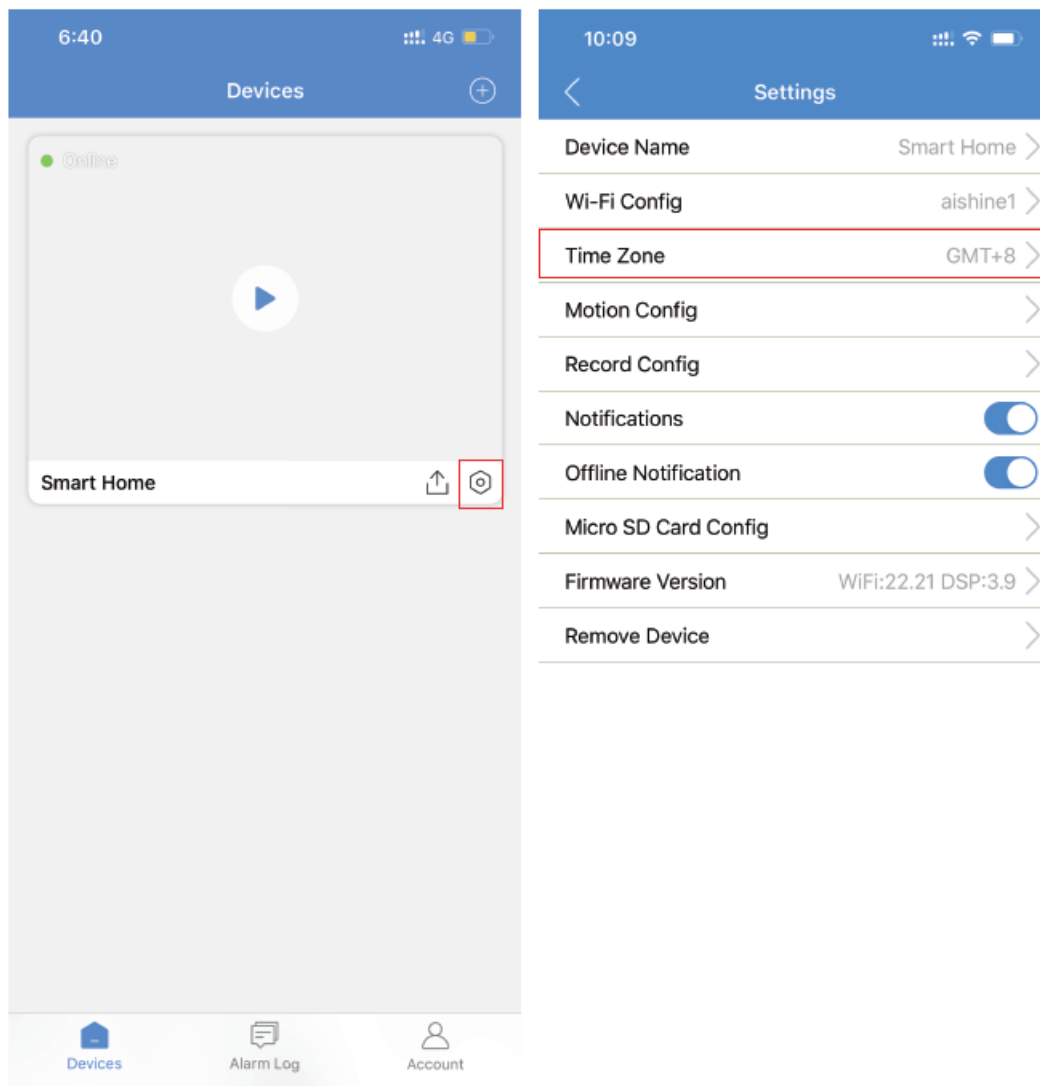
- Press Reset key 4 seconds till a beep sound(WiFi indicator blink slowly and ready for pairing WiFi);
- Open APP CamSC » Click + » Smart Home » Device in pairing mode >> CAM-xxxxxx.



Click > at the end of WiFi to select the local router WiFi, then input password. Click NEXT and wait around 10 seconds to finish the configuring; Device Binding Successful and online now.



Click **setting** in APP'S first interface, select Time Zone and choose Time Zone to ensure live streaming video with the set time zone.



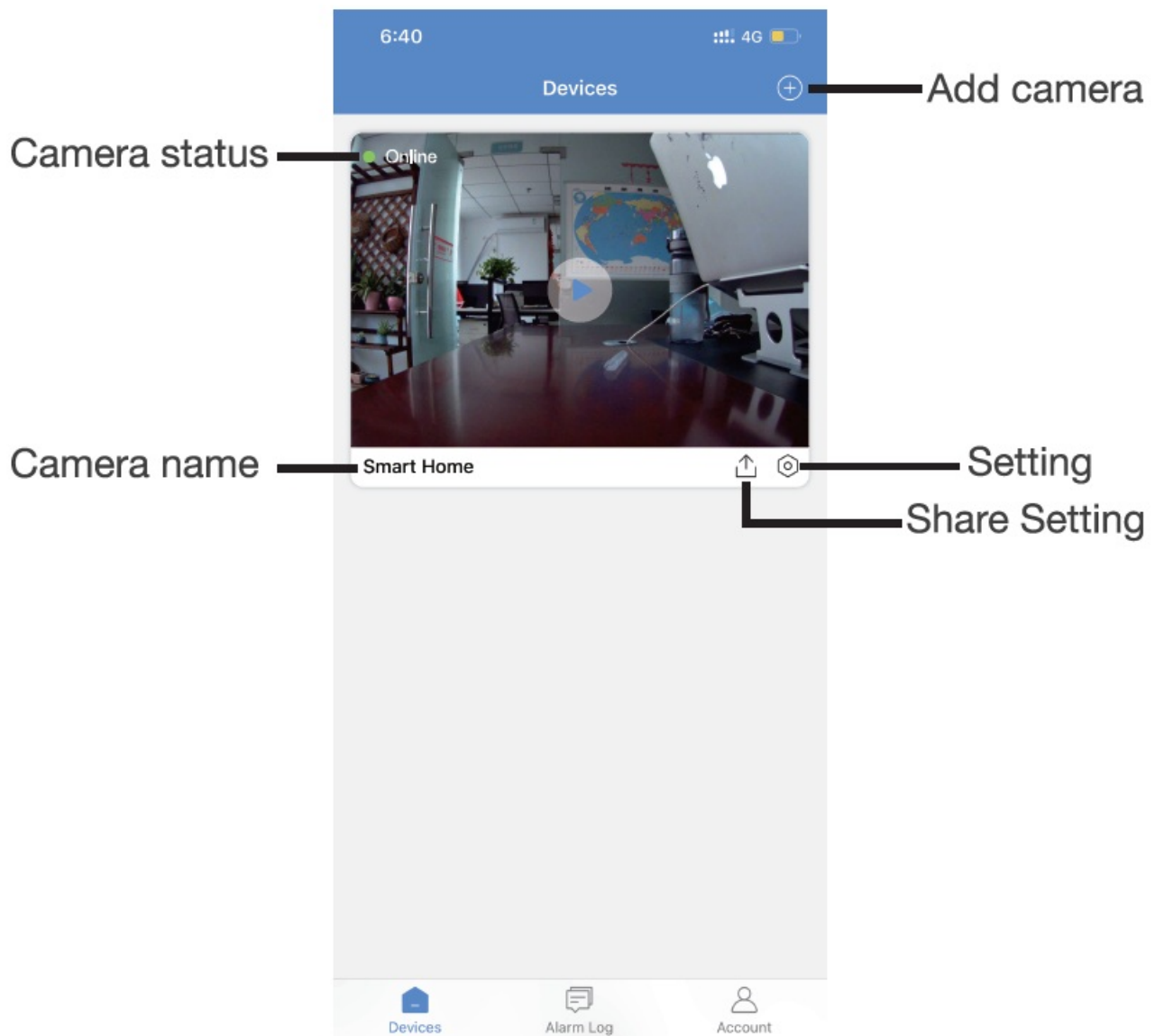
Camera Normal Status:

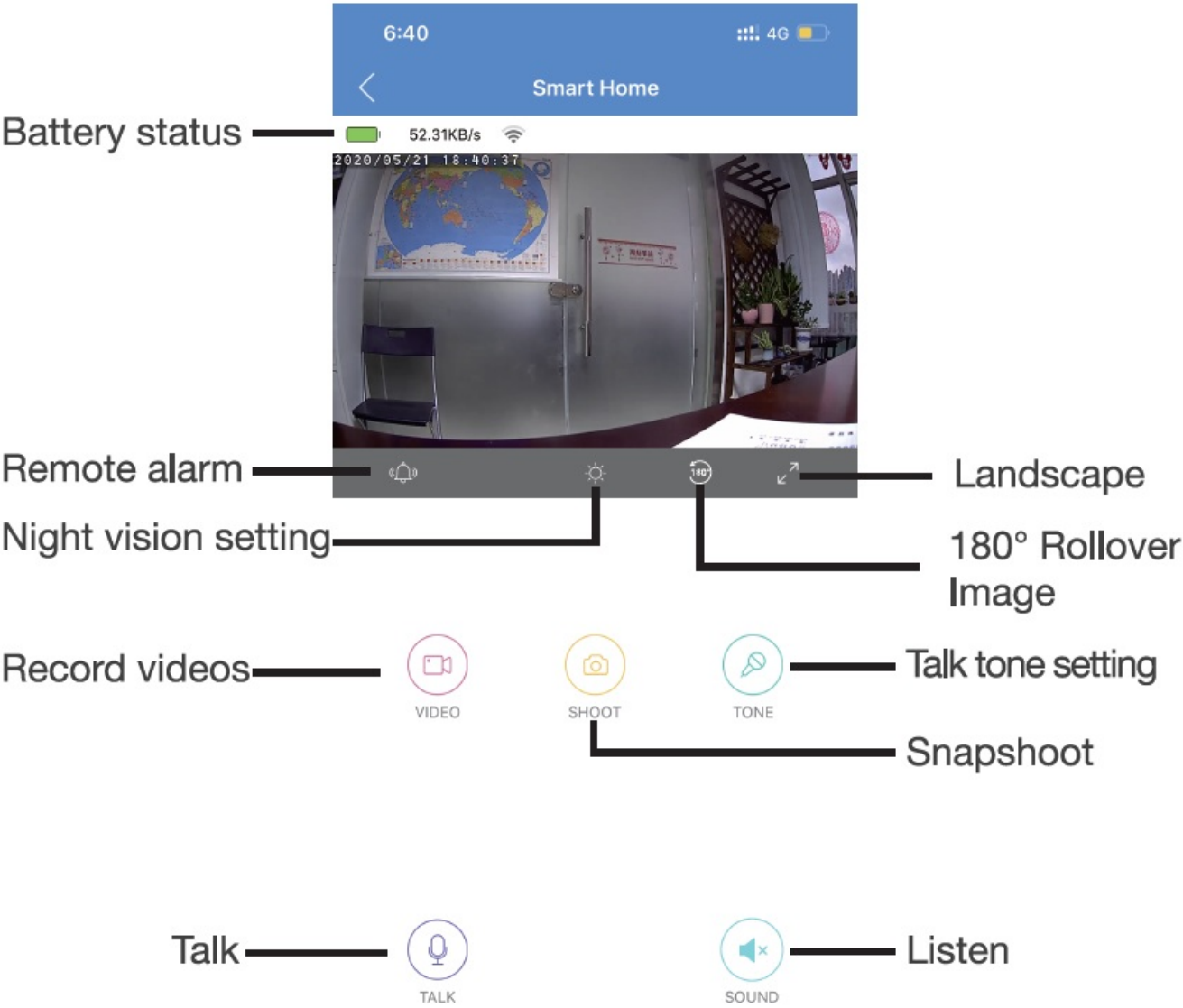
1. Camera always in standby mode;
2. Once motion detected, it will push a notification to phone, do a snapshot and record a 15 seconds video clip into memory card;
3. Sleep and alert after 1 minute once motion detected again.

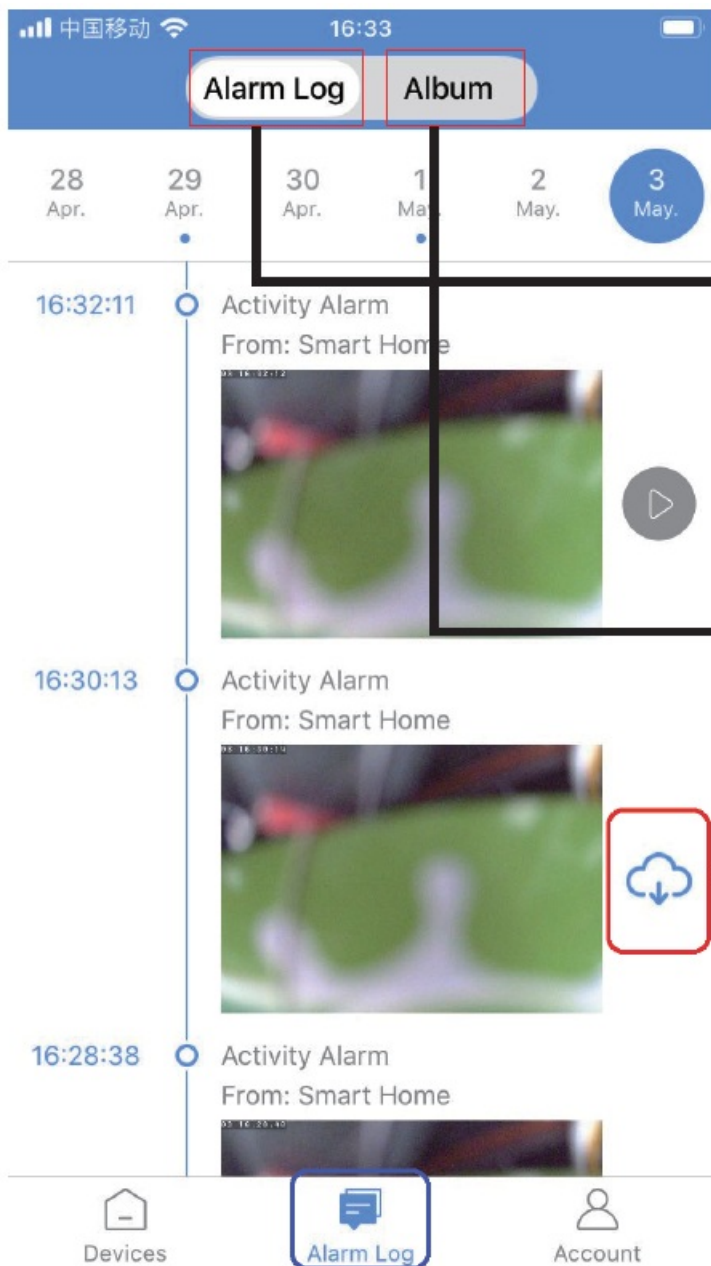
Set name: Press the **setting** after the camera, select Device Name → Input needed name like Office, Living room etc



APP Introduction



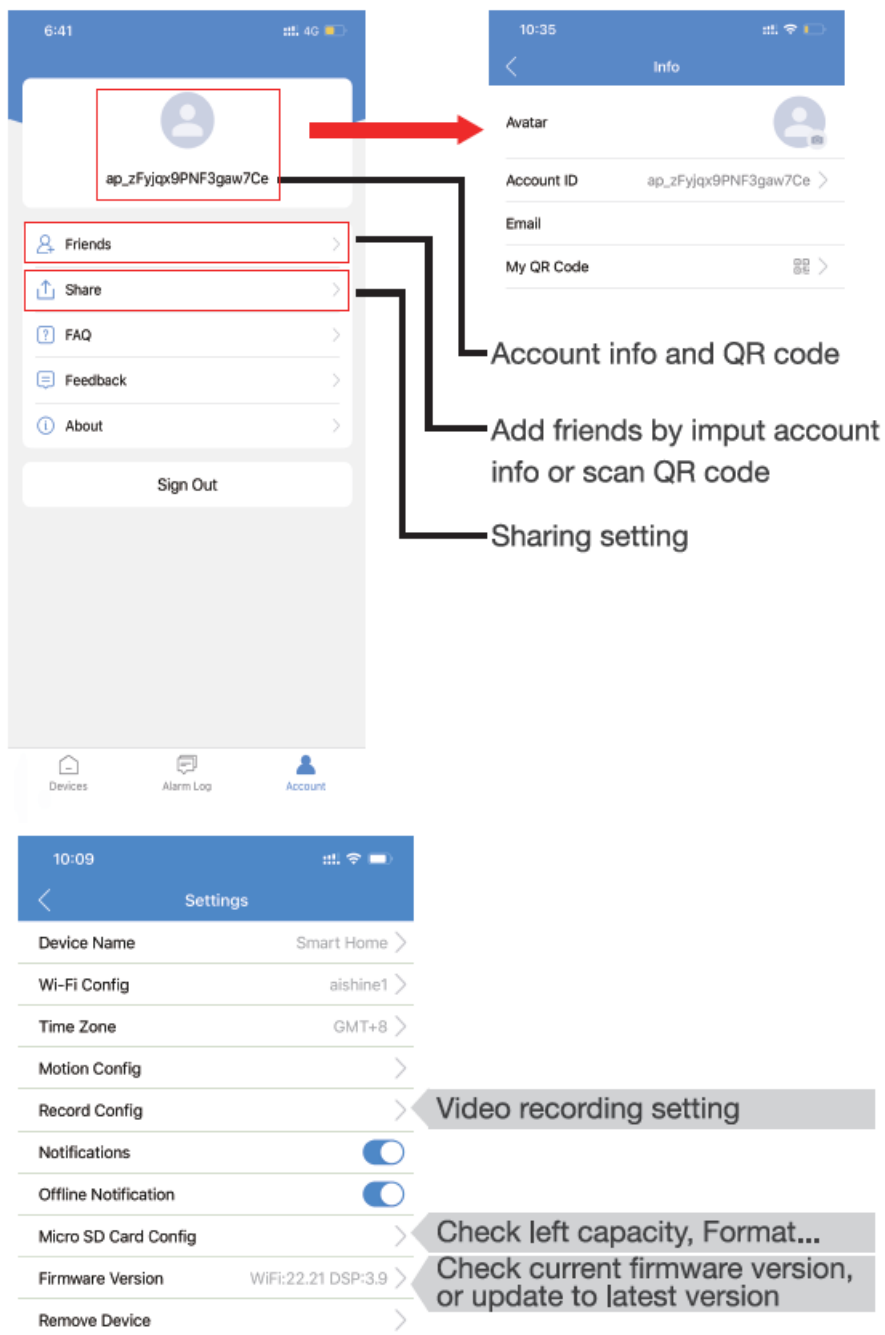




Alarm pictures / Alarm videos in Micro SD card

Recorded pictures and videos by APP

Download alarm videos from Micro SD card to phone



Specification

Resolution	2 Mega CMOS
Video pixel	1920'1080
Compressed format	H.264
View angle	145 Degree
Type of memory card	TF card>=Class 4/10 and HC marked
Maximum capacity of memory card	64GB
Mobile phone operation system	Android/iOS
Compatible router	2.4G and Mobile hotspot
Two way talking	Yes
PIR alarm pictures in server	15days
Battery capacity	4500mAh
Standby power consumption	500μA
Power consumption	350mAh
Power consumption with night vision	610mAh
Recording	1 minute/ around 24MB
Standby time	Around 1 year
Charging time	Around 10 hours
Power adapter (not include but needed)	5V/2A

FAQ

- **Is device with offline and low power notification?**

Yes.

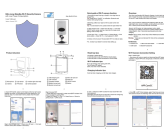
- **What does the device do when WiFi off?**

Keep searching for WiFi signal 3mins, 10mins, 1 hour, 2 hours, 5 hours, 24 hours later; If WiFi is on, it will be connected to WiFi automatically.

- **If the steps can't move forward (Bluetooth Pairing Mode)?**

Delete the App and Download again to test,and agree all permissions (Allow notification, Bluetooth and location).

Documents / Resources

	OzSpy HAIX1PR2MP Hidden Camera PIR [pdf] Instruction Manual HAIX1PR2MP, Hidden Camera PIR, HAIX1PR2MP Hidden Camera PIR, Camera PIR
---	--