



OWC Mercury Pro LTO High-Speed Low-Cost Archiving User Guide

[Home](#) » [OWC](#) » OWC Mercury Pro LTO High-Speed Low-Cost Archiving User Guide 



OWC Mercury Pro LTO
Getting Started – Mac

Thank you for purchasing the Mercury Pro LTO Thunderbolt 3 LTO archival storage solution. To use your new Mercury Pro LTO system, you need to install a few pieces of software. If you need to download the software, please use the links below.

Contents

- [1 Mercury Pro LTO Drivers and Software](#)
- [2 Required – ATTO Express SAS HBA Drivers](#)
- [3 Checking the Status of the Driver Installation](#)
- [4 Optional – LTFS Support Packages](#)
- [5 Optional – Tape and ATTO Diagnostic Tools](#)
- [6 Documents / Resources](#)

Mercury Pro LTO Drivers and Software

- ATTO SAS HBA Drivers – These drivers are required for your LTO unit to be used with your computer.
- LTFS Support and Diagnostic Tools – The LTFS tools are required by some third-party software applications like OWC ArGest Backup. Please check your software requirements to see if this tool is needed. The Diagnostic Tools are used to check the health of your LTO unit.



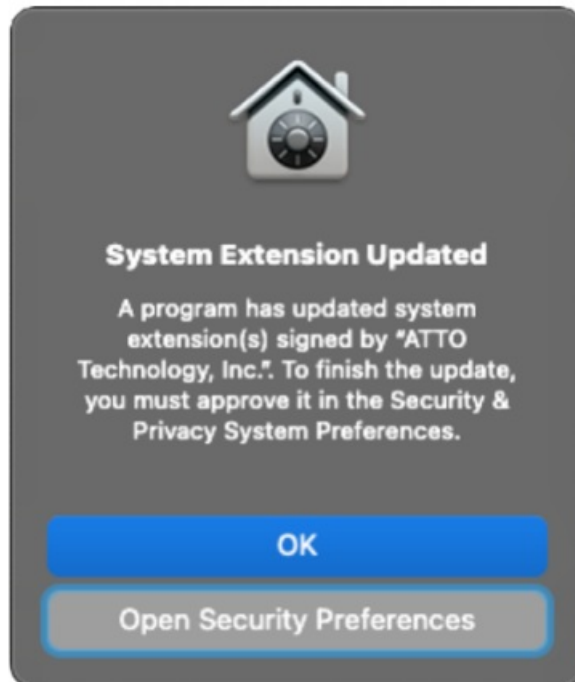
<https://download.owc.com/lto/mac>

Required – ATTO Express SAS HBA Drivers

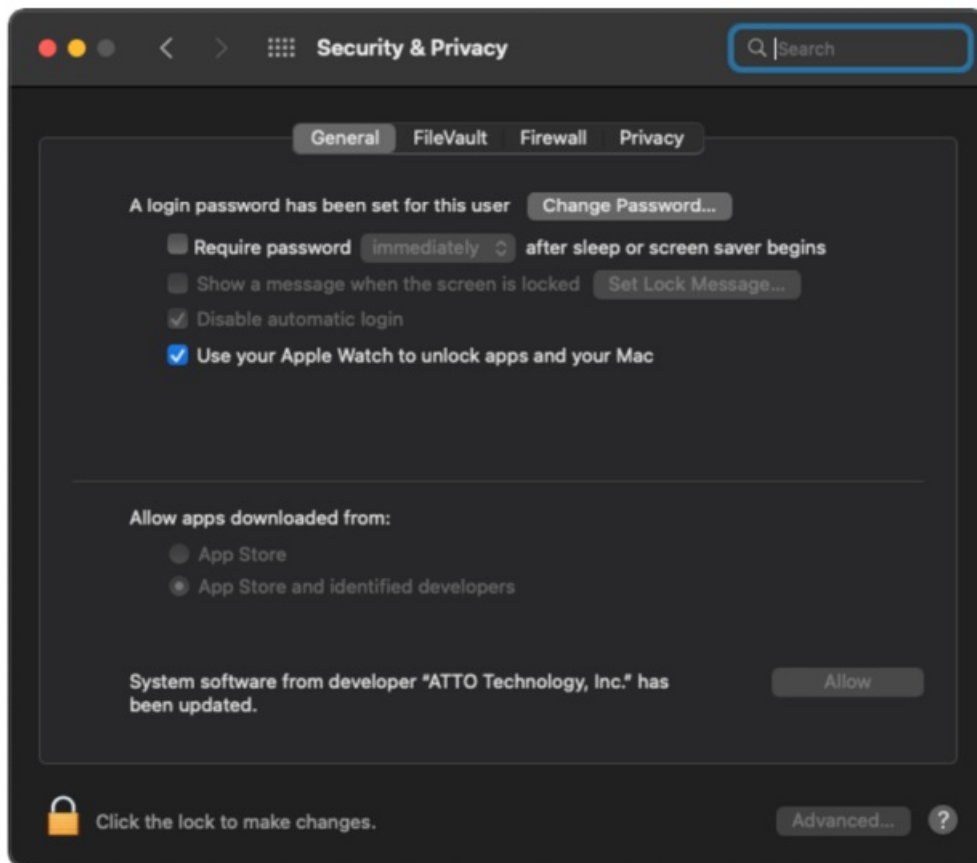
The package within the “ATTO SAS Driver (Install First)” named `macos_kext_esashba4_*` allows your Mac system to see and access the Mercury Pro LTO tape drive properly. As a minimum, you must install this package for the Mercury Pro LTO unit to be recognized. Installation may require a security authorized step (dependent on your current system security settings) and will require a system reboot.

NOTE: Catalina and later macOS users: Once the installation completes, do not click the Restart button when presented. Instead, you should be prompted to allow a system driver extension (kext) from ATTO.

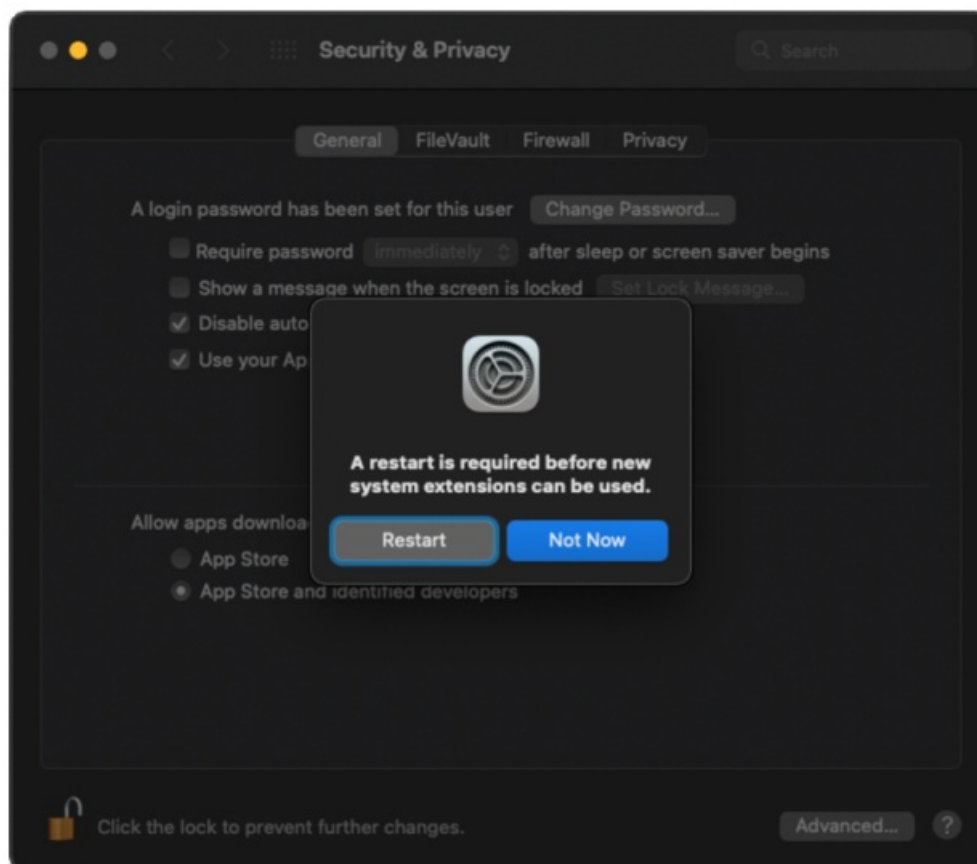
Open Apple Menu -> System Preferences and select Security and Privacy.



Make sure that you are on the General tab and unlock the pane. Click the Allow button that appears in the lower section of the pane.



You will then be prompted to reboot your system – click the “Not Now” button and close System Preferences. You will be taken back to the Installer window – click the “Restart” button there to complete the installation.

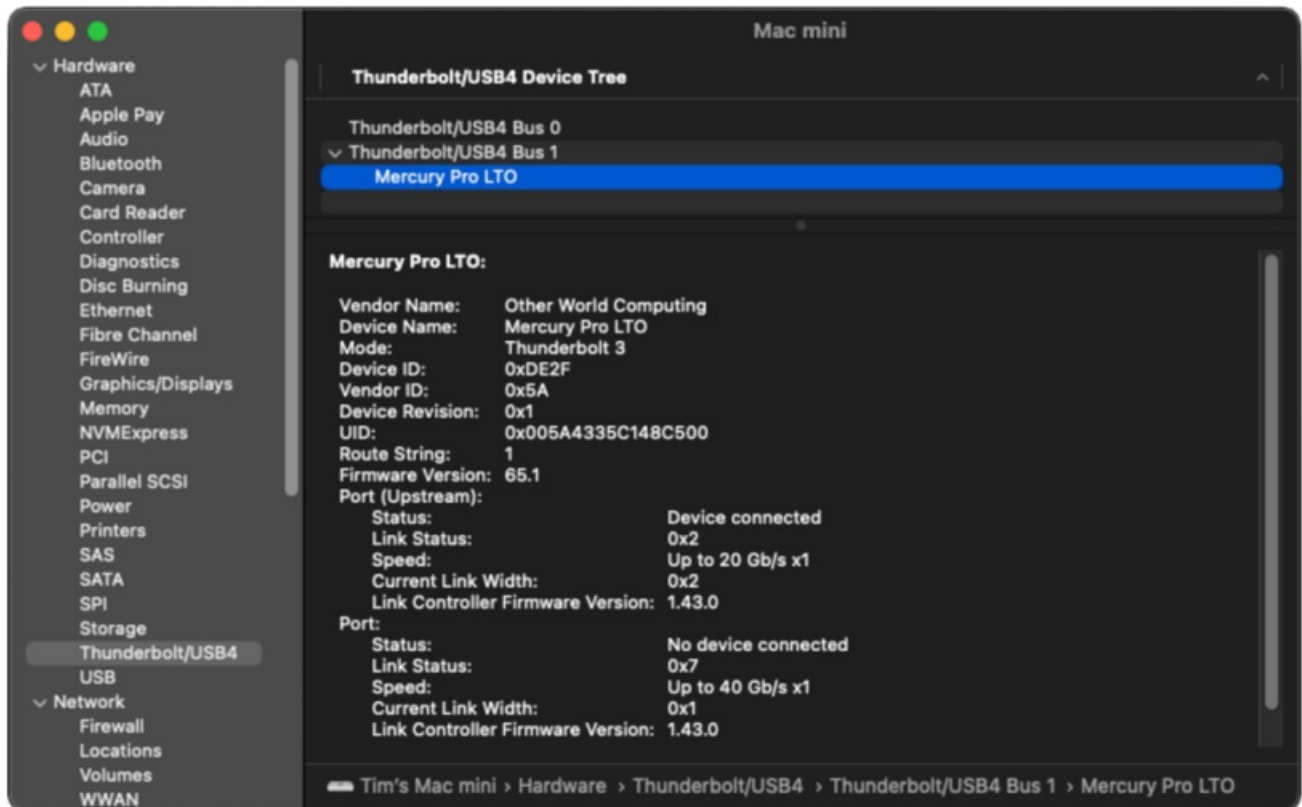


Checking the Status of the Driver Installation

Once the system has rebooted, hold down the OPT key, open the Apple menu and select “System Information ...”

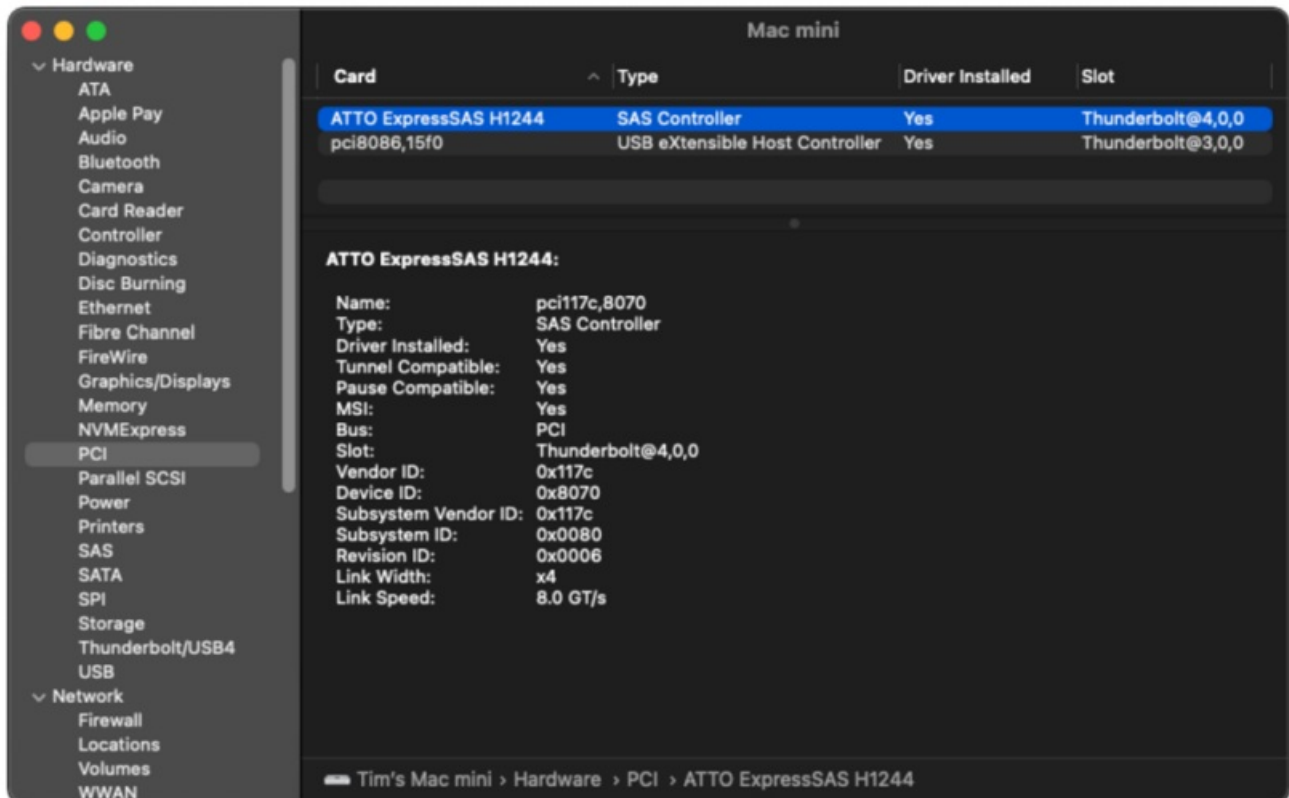
Select the Thunderbolt/USB 4 option in the Navigation List.

The Mercury Pro LTO unit should be displayed as attached to one of your Thunderbolt ports.



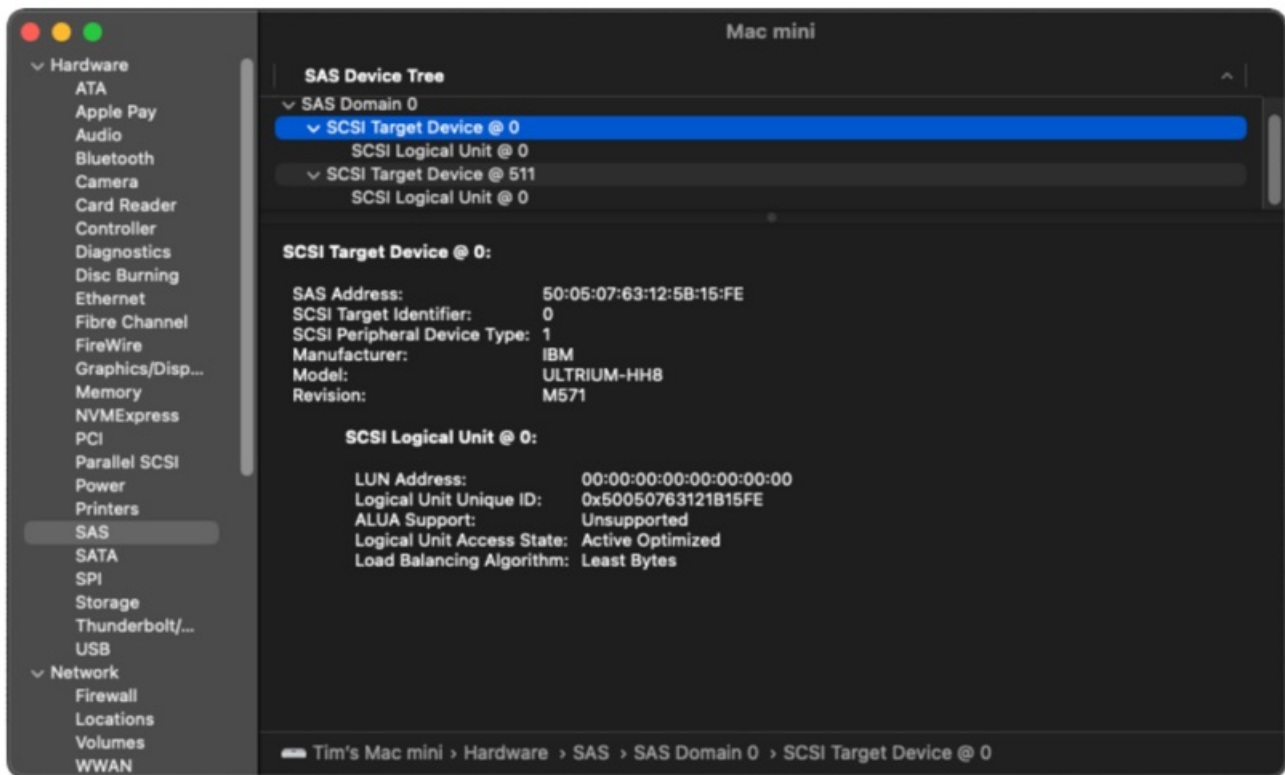
Select the PCI option in the Navigation list You should see the ATTO

Expresses H1244 listed and the "Driver Installed" field should read "Yes". If neither of these are correct, the driver did not get authorized properly and you will need to return to the first step.



Navigation list

The Tape drive will show up in the information pane as shown above.



Optional – LTFS Support Packages

If you will be using a backup app that depends on LTFS support for operation, the next installation will be the 2 packages in the LTFS Tools folder.

The packages should be installed in this order:

- ICUFramework
- macFUSE
- Itfssde

During the installation of these components, you will be prompted as in the ExpressSAS text above by the macOS gatekeeper to allow the MacFuSE extension to be enabled in Security and Privacy System Preferences. Follow the steps as outlined for the ATTO SAS driver above to enable the MacFuSE extension. You will once again be required to reboot your system to enable this extension.

Optional – Tape and ATTO Diagnostic Tools

For checking on the health of your Mercury Pro LTO tape device, you should not depend on errors reported by your backup application. Instead, we have provided the appropriate tape diagnostic tools in the Install Packages DMG – in this case the IBM “ITDT” package.

Also included with the “ATTO SAS Drivers” folder in the ATTO Config Tool package.

This package is used for troubleshooting the ATTO HBA and to under the HBA firmware version. It is not required for normal operations of the Mercury Pro LTO.

Documents / Resources



[OWC Mercury Pro LTO High-Speed Low-Cost Archiving](#) [pdf] User Guide
Mercury Pro LTO High-Speed Low-Cost Archiving, Pro LTO High-Speed Low-Cost Archiving, LT
O High-Speed Low-Cost Archiving, High-Speed Low-Cost Archiving, Low-Cost Archiving, Cost
Archiving, Archiving