



[Home](#) » [OVS](#) » **OVS Cupc 22 Series Flushing Wc Intelligent Toilet Instruction Manual** 

Contents [[hide](#)]

- [1 OVS Cupc 22 Series Flushing Wc Intelligent Toilet](#)
- [2 NOTICE BEFORE INSTALLATION](#)
- [3 INSTALLATION SPACE](#)
- [4 INSTALLATION DRAWING PLAN](#)
- [5 INSTALLATION STEPS](#)
- [6 BATTERY INSTALLATION](#)
- [7 MAINTENANCE REGULAR MAINTENANCE](#)
- [8 Installation Guide](#)
- [9 FAQs](#)
- [10 Documents / Resources](#)
 - [10.1 References](#)

OVS

OVS Cupc 22 Series Flushing Wc Intelligent Toilet



Installation Guide:

1. Prepare the area and ensure all necessary parts are available.
2. Place the mounting L-shaped brackets in the designated position.
3. Set the Wax ring in place on the floor flange.
4. Apply weight evenly on the toilet to ensure a secure fit.
5. Carefully lower the toilet over the mounting brackets.
6. Install bolts into the bracket and tighten evenly. Do not overtighten to avoid damage.
7. Affix bolt caps securely after installation.

Please respond to problems usually arising from original restrictions.

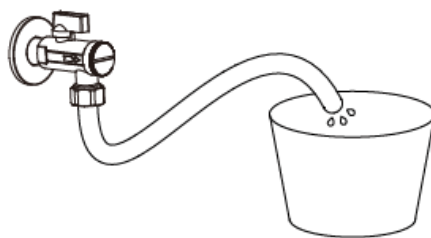
NOTICE BEFORE INSTALLATION

WATER PRESSURE

Water pressure standard

- Water pressure standard rate: 0.15MPa-0.55MPa. Open the valve and let water run into a bucket with a volume measure for 15 seconds.

- If the water in the bucket is more than 4 L, the minimum water pressure is met.
- Please adjust the angle to fit in when the water pressure is too high.



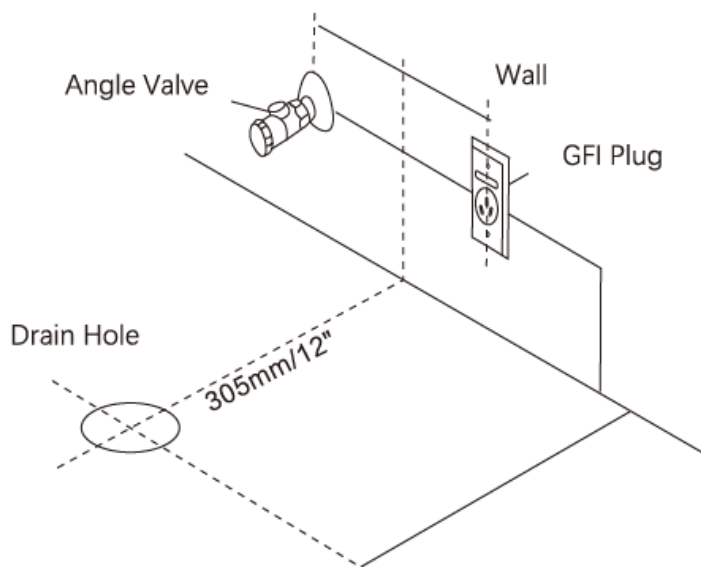
Drainage operation

Turn on the angle valve and drain off water for over 2 minutes before installing the inlet tube onto the angle valve.

INSTALLATION SPACE

Ensure there is enough space around the unit, and confirm the bathroom door or shower door will not hit the unit when they open.

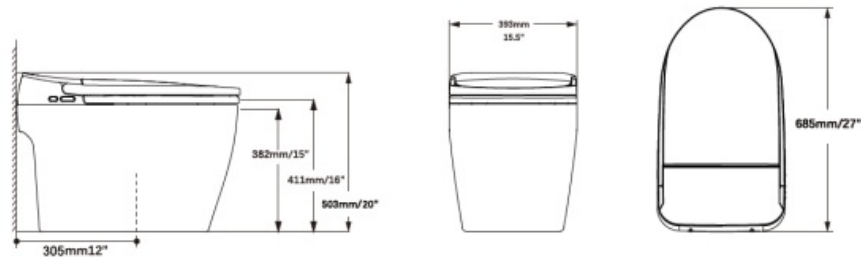
- Ensure the minimum distance from the wall to the center of the floor drain is 305mm or 12" long.
- A GFI plug is required close to the unit.



INSTALLATION DRAWING PLAN

CAUTION

- The drawing plan is not the actual scale of the unit.
- When doing the installation in cold weather, leave the unit in a room temperature for at least four hours before installing.



INSTALLATION STEPS

1. For the bathroom, newly installing a toilet, a flange with a bolt shall be added.

Note: You need to install the flange according to the size and position of the two bolt holes at the bottom of the ceramic. See Figure 1

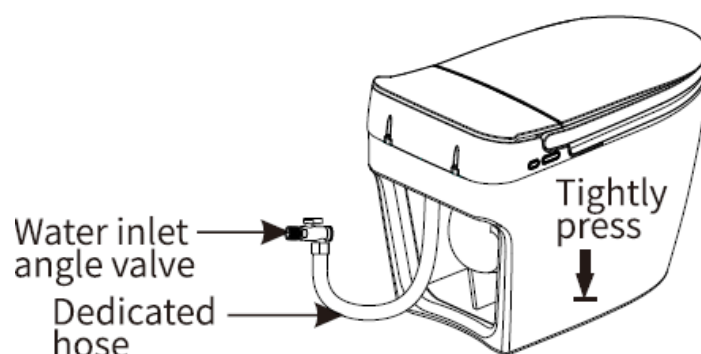
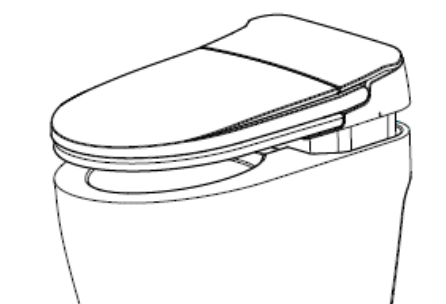
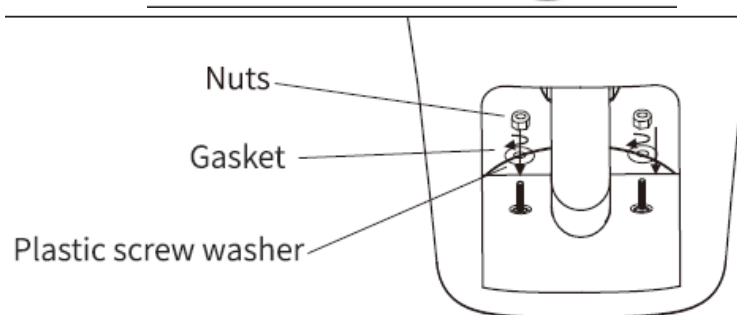
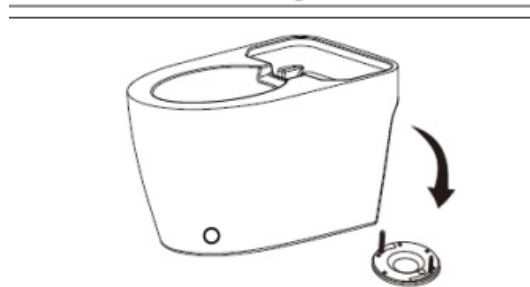
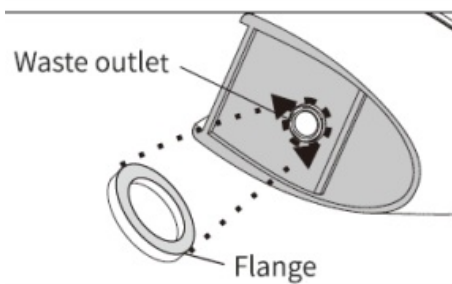
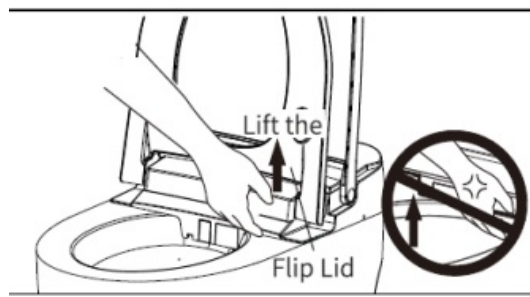
2. Lift the flip lid assembly from the toilet, up from the inside.

Note: Do not pull the lid roughly when lifting the toilet flip lid

3. Install a flange under the toilet.
4. Put the toilet on the flange, making sure the bolts line up with the holes in the toilet (from the top)
5. Use a spanner to lock the nut and other accessories to the retaining bolts. (from the top)
6. To install the seat cover and ceramic bowl, the seat cover shall be aligned with the ceramic bowl.

Then press down with your hands.

7. Install the water inlet angle valve and connect the dedicated hose (before connecting the dedicated hose, please drain for 3-5 minutes, ensuring that the line is clean and won't be blocked)



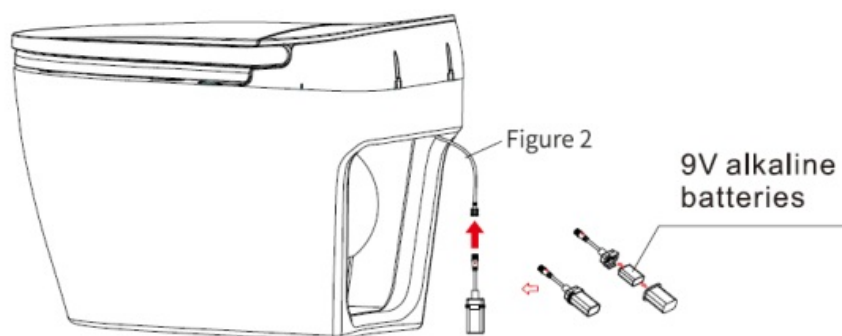
-
- The filter screen should be cleaned with clear water every three months

- Steps to clean filter screen: Turn off the valve, unscrew the filter screen, and carefully rinse with clean water.
- Pipe and valve could be different from the above graphic, due to production batches. Please refer to the actual product.

BATTERY INSTALLATION

Steps

1. Find Figure 2 to install the battery into the battery box.
2. Insert a new battery in the direction of the arrow and tighten the waterproof cap lockwise.
3. Press the flush button to make sure it flushes properly



Note

1. The intelligent toilet accessories have been debugged and are strictly prohibited from personal disassembly.
2. Please use the fittings and hoses provided by our company. Old fittings and hoses can be reused.

MAINTENANCE REGULAR MAINTENANCE

Cleaning the unit

Gently wipe dirt stains with a dry soft cloth or sponge;e, do not apply any chemical solutions to the unit.

Cleaning the nozzle

1. Works when the user is not sitting on the unit.

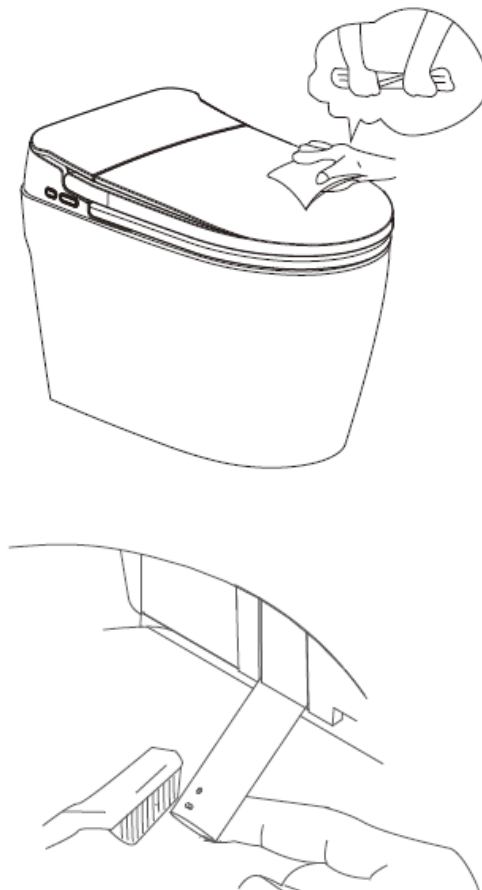
2. Press the female clean button by the side button, the nozzle will stretch out, and the self-cleaning function will initiate.
3. When the self-cleaning function turns on, the nozzle will not spray water. Gently wipe the nozzle with a soft cloth or brush with a toothbrush.
4. The cleansing schedule is 90 seconds, the nozzle will be static for the first 70 seconds, and will | move back and forth in the last 20 seconds. The nozzle will retract back to the unit after cleansing.

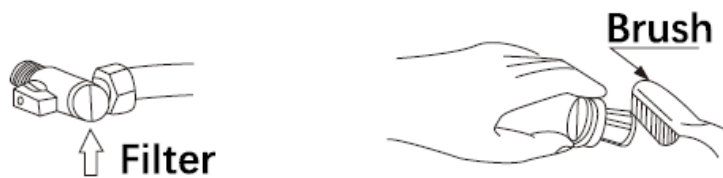
Repeat the process if necessary.

- Warning: Do not apply force by pulling, pushing, or attempting to bend the nozzle; this will result in damage or electrical shock.

Cleaning the filter.

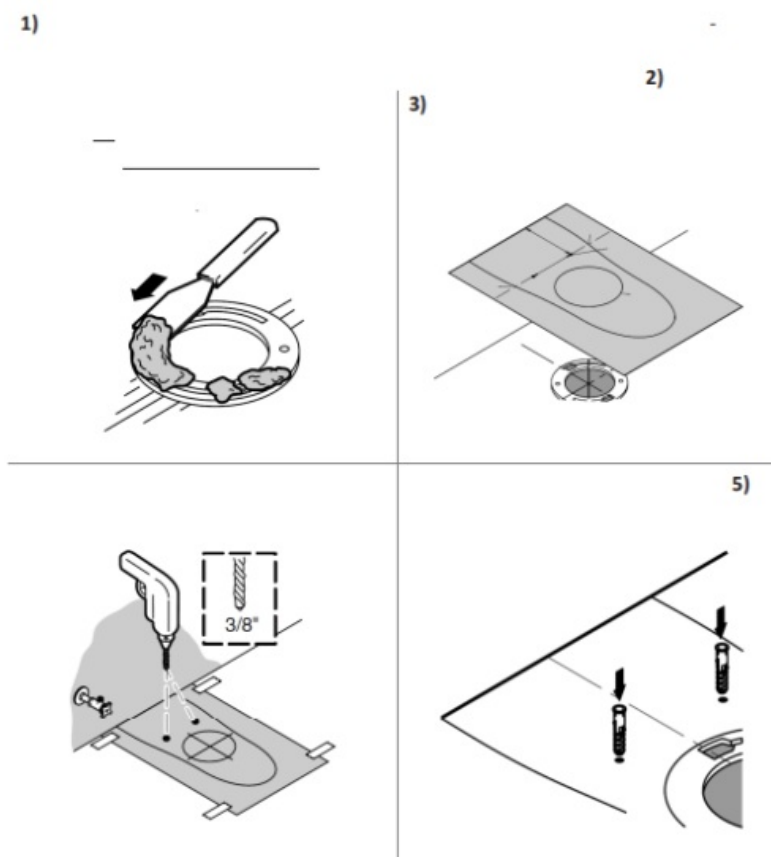
1. Power off the unit, unplug the power cord with a dry hand. Use the tool to unscrew the filter if necessary.
2. Rinse with clear water, use a brush i necessary.
3. Install the filter back to its original position, and check for leakage.



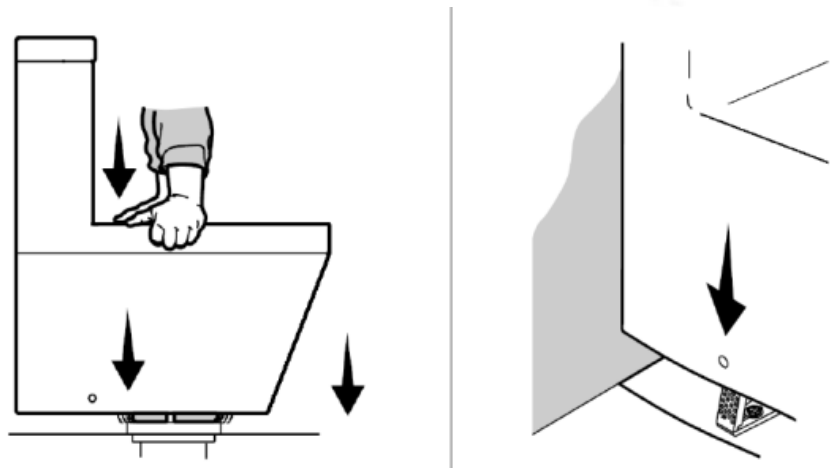
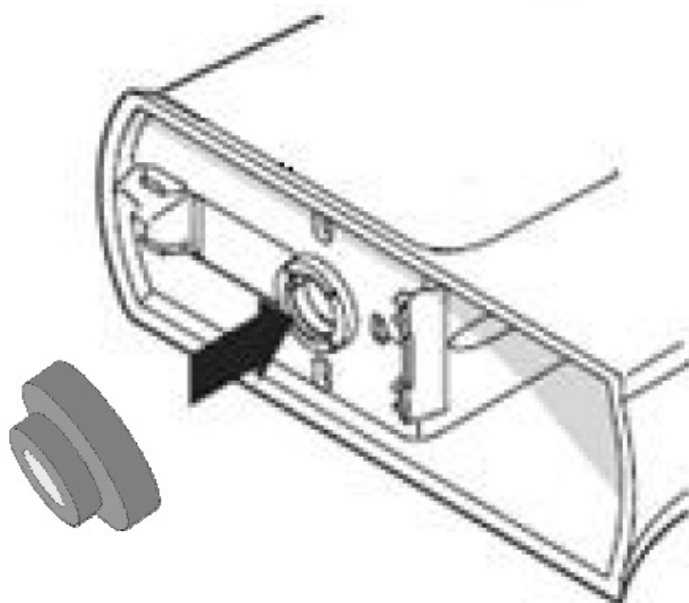
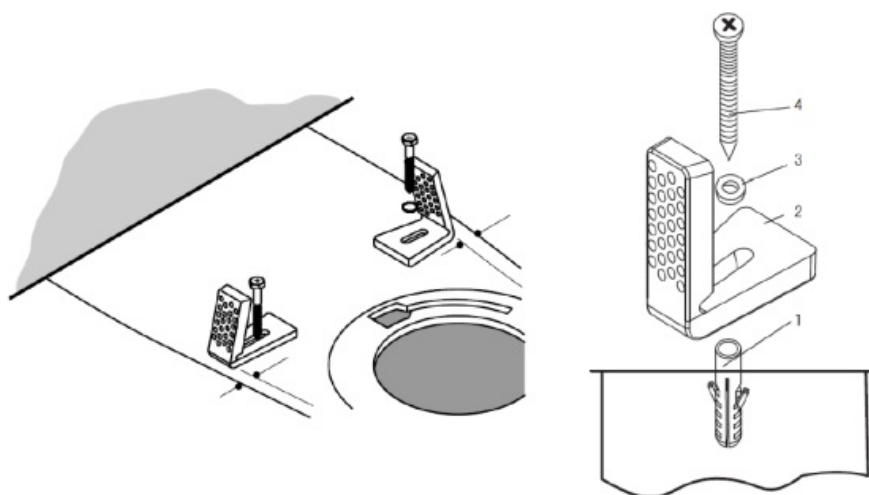


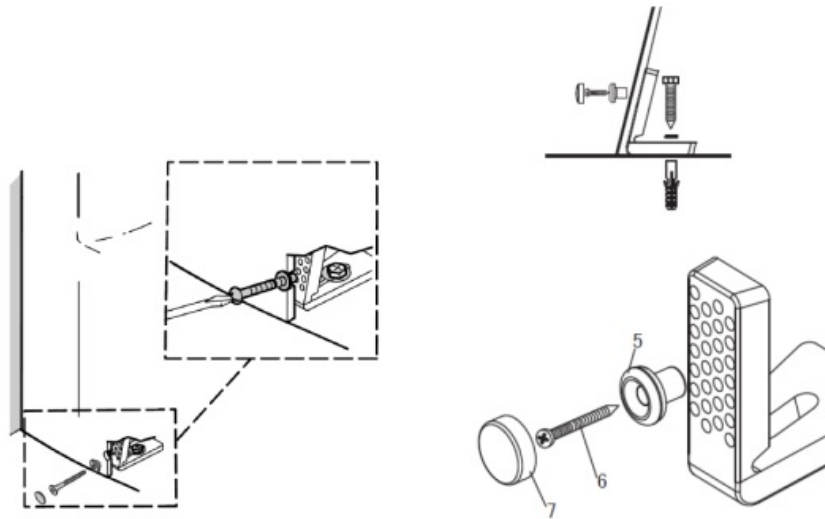
Installation Guide

Concealed Trap Toilet with L Bolts Brackets



- Install the mounting LL-LL-shaped brackets, and place the Wax ring
- Apply weight evenly.
- Carefully lower the toilet over the mounting brackets.
- Install the bolts into the bracket, and tighten evenly. Do not overtighten! Affix bolt caps after installation.





FAQs

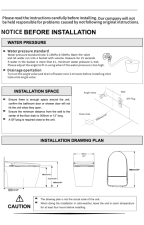
: How do I know if the toilet is securely installed?

: Ensure that the toilet is stable and does not wobble. Check for any leaks around the base after installation.

Can I reuse the Wax ring if I need to reposition the toilet?

: It is recommended to use a new Wax ring whenever repositioning the toilet to maintain a proper seal.

Documents / Resources

	<p>OVS Cupc 22 Series Flushing Wc Intelligent Toilet [pdf] Instruction Manua</p> <p> </p> <p>2209, 2213, 2230, Cupc 22 Series Flushing Wc Intelligent Toilet, Cupc 22 Series, Flushing Wc Intelligent Toilet, Wc Intelligent Toilet, Intelligent Toilet , Toilet</p>
---	--

References

- [User Manual](#)

■ OVS

🔑 2209, 2213, 2230, Cupc 22 Series, Cupc 22 Series Flushing Wc Intelligent Toilet, Flushing Wc Intelligent Toilet, Intelligent Toilet, OVS, toilet, Wc Intelligent Toilet

Leave a comment

Your email address will not be published. Required fields are marked *

Comment *

Name

Email

Website

☐ Save my name, email, and website in this browser for the next time I comment.

Post Comment

Search:

e.g. whirlpool wrf535swhz

Search

[Manuals+](#) | [Upload](#) | [Deep Search](#) | [Privacy Policy](#) | [@manuals.plus](#) | [YouTube](#)

This website is an independent publication and is neither affiliated with nor endorsed by any of the trademark owners. The "Bluetooth®" word mark and logos are registered trademarks owned by Bluetooth SIG, Inc. The "Wi-Fi®" word mark and logos are registered trademarks owned by the Wi-Fi Alliance. Any use of these marks on this website does not imply any affiliation with or endorsement.