



## OVIA OR5 Rectangular LED Bulkheads Owner's Manual

[Home](#) » [OVIA](#) » OVIA OR5 Rectangular LED Bulkheads Owner's Manual 

### Contents

- [1 OVIA OR5 Rectangular LED Bulkheads](#)
- [2 Product Information](#)
- [3 Product Usage Instructions](#)
- [4 WIRING INSTRUCTIONS](#)
- [5 EMERGENCY BATTERY BACKUP – MANUAL TESTING](#)
- [6 SPECIFICATIONS:](#)
- [7 COMPLIANT WITH](#)
- [8 GENERAL INFORMATION](#)
- [9 INSTALLATION](#)
- [10 ABOUT COMPANY](#)
- [11 Documents / Resources](#)
  - [11.1 References](#)
- [12 Related Posts](#)



**OVIA OR5 Rectangular LED Bulkheads**



## Product Information

- The OR5 & OR5-E range of LED bulkheads are designed for both standard and emergency use. These rectangular LED bulkheads have a wattage of 5W and are switchable between 3000K, 4000K, and 6500K color temperatures. The emergency fittings have a battery backup of 6.4V 1500mAh LiFePO4 and can be manually tested using a keyswitch. The product dimensions are 244mm x 125mm x 96mm and have an IP65 rating. The product is available in two variants, one without emergency backup and the other with emergency backup.
- The product is compliant with various statutory instruments, directives, and standards and comes with a warranty of 3 years. The product is made of polycarbonate material and has a net weight of 0.446Kg for the standard variant and 0.646Kg for the emergency backup variant.

## Product Usage Instructions

Before commencing installation, read the instructions carefully and retain them for future reference. Electrical products can cause death, injury, or damage to property. If you are in doubt about the installation or use of this product, consult a competent electrician.

1. Loosen the four screws and remove the diffuser from the base (Fig. 1).
2. Unlock the LED array by sliding the PCB board over, allowing the screw heads to pass through the larger holes (Fig. 2).
3. Lift the LED array away from the base (Fig. 3).
4. Drill the four fixing points out of the base of the fitting (Fig. 4).
5. Choose the cable entry point by removing either the rear or side knockouts. Use gland M20 (not supplied) for all side knockouts (Fig. 5).
6. Using the four fixing screws provided, fix the fitting onto the mounting surface (Fig. 6).
7. On the back of the LED array, terminate the cable accordingly and secure it via the cable clamp (Fig. 7).
8. Refit the LED array into the base (Fig. 8).
9. Slide the LED array back into its original position to lock it into place (Fig. 9).
10. To remove the terminal cover, grab the two sides of the ratchet clips. Once terminated, ensure that the cover is pushed firmly over the wires to secure them in place. Add a screw for additional security to maintain the IP rating.
11. For standard fittings, terminate the cable as follows: L – (Brown) Switched Live, E – (Green/Yellow) Earth, N –

(Blue) Neutral.

12. For emergency battery backup fittings, terminate the cable as follows: L – (Black) UnSwitched Live, Ls- (Brown) Switched Live, E – (Green/Yellow) Earth, N – (Blue) Neutral.
13. To enable the MANUAL emergency fittings to be tested, a keyswitch must be fitted inline with the Permanent Live input into the luminaire.
14. For manual testing of emergency battery backup, operate the key switch or switch off the circuit breaker. Ensure that normal supply is restored after the test and that the indicator status LED is illuminated. If the luminaire fails any of the function or duration tests, contact a qualified electrician.

**Note:** Errors and omissions are excluded. The specification is subject to change without notice.

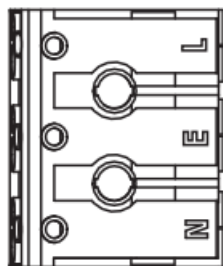
If you have any further questions or concerns, please contact OVIA Limited at the following:

- **Address:** Scolmore House, Mariner, Lichfield Road Ind. Estate, Tamworth, Staffordshire, B79 7UL
- **Telephone:** 01827 300640
- **Email:** [technical@oviaUK.com](mailto:technical@oviaUK.com)
- **Website:** [www.oviaUK.com](http://www.oviaUK.com)

## WIRING INSTRUCTIONS

- Suitable cable and power is to be supplied to the point of installation using IP rated connectors/junction boxes used where required.
- To remove terminal cover, grab the two sides of the ratchet clips. Once terminated ensure cover is pushed firmly over the wires to secure them in place, add a screw for additional security to maintain the IP rating. Depending on the fitting being installed, the cable can be terminated as follows:

## STANDARD FITTINGS



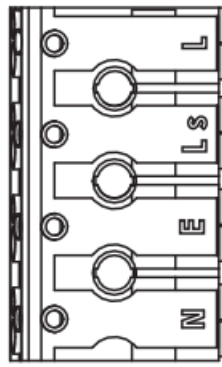
**L** - (Brown) Switched Live

**E** - (Green/Yellow) Earth 

**N** - (Blue) Neutral

## EMERGENCY BATTERY BACKUP FITTINGS

See Notes Below



**L** - (Black) UnSwitched Live

**Ls** - (Brown) Switched Live

**E** - (Green/Yellow) Earth 

**N** - (Blue) Neutral

**NOTE:** The emergency battery only fitting can be wired as maintained or non-maintained:

- **Maintained** – The LED driver connects to ‘Switched Live’ with ‘Unswitched’ permanent live to the emergency inverter. (Luminaire can be switched on/off, but will illuminate at a lower level on power failure)
- **Non-Maintained** – The LED driver is not connected to ‘Switched Live’ with ‘Unswitched’ permanent live to the emergency inverter (luminaire only illuminates on power failure).

## EMERGENCY BATTERY BACKUP – MANUAL TESTING

- On first operation a 24 hour charge will be required to fully charge the batteries.
- Failure to provide a permanent live will cause the batteries to power the fitting when it is switched off. This is not recommended as it will reduce the lifetime of the batteries.
- This product must be disconnected from the circuit if subjected to any high voltage or insulation resistance testing. Irreparable damage will occur if this instruction is not followed.
- Recommended routine emergency test procedure in accordance with BS 5266.
  - Daily check – check that the status GREEN LED indicator is illuminated.
  - Monthly functional test – simulate a mains supply failure for approx. 30 secs by operation of key switch or switching off a circuit breaker. Ensure normal supply is restored after test and the indicator status LED is illuminated.
  - Annual full three hour duration test – conduct a three hour continuous duration test. Simulate a mains supply failure for three hour continuous test by operation of key switch or switching off circuit breaker. Ensure normal supply is restored after test and the indicator status LED is illuminated.
- If the luminaire fails any of the function or duration tests, please contact a qualified electrician.

## SPECIFICATIONS:

Product Code	OR5	OR5-E
Wattage	5W	7.5W
Dimensions	244mm x 125mm x 96mm	
IP Rating	IP65	
Colour Temperature	CTA Switchable – 3000K, 4000K & 6500K	
Dimmable	No	
Emergency Fitting	No	Yes
Battery Specification	N/A	6.4V 1500mAH LiFePO4
Fitting Net Weight	0.446Kg	0.646Kg
Input Voltage/Frequency	220-240V~ 50/60Hz	
Body Material	Polycarbonate	
Warranty	3 Years	

## COMPLIANT WITH

The Rectangular LED Bulkheads have been tested and comply with the following statutory instruments, directives & standards:

- LV (2014/35) & EMC (2014/30)
- BS EN 60598-1
- BS EN 60598-2-1
- IEC 62471
- BS EN 55015
- BS EN 61000-3-2
- BS EN 61000-3-3
- BS EN 61547

## GENERAL INFORMATION

PLEASE READ INSTRUCTION BEFORE COMMENCING INSTALLATION AND RETAIN FOR FUTURE REFERENCE.

Electrical products can cause death or injury, or damage to property.

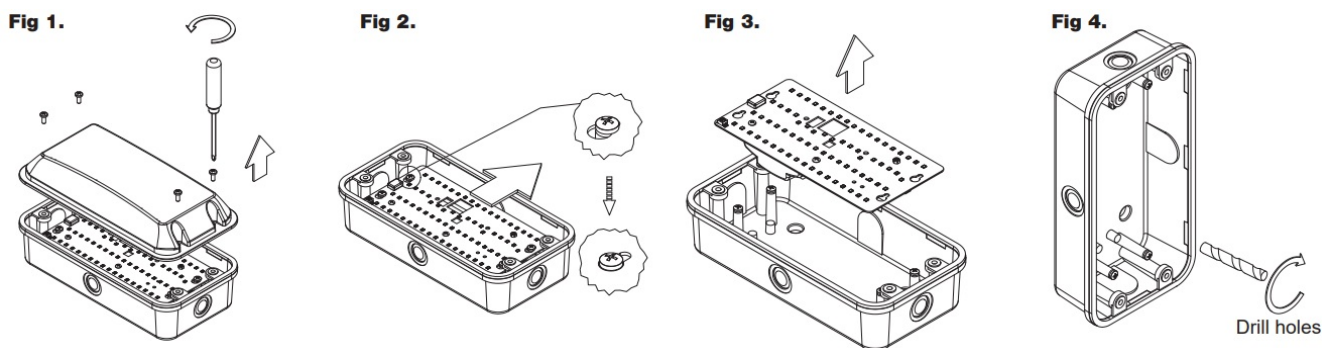
If in any doubt about the installation or use of this product, consult a competent electrician.

- Before commencing any electrical work, to prevent the possibility of receiving an electric shock, ensure the mains isolator on the consumer unit is in the 'OFF' position and safely isolated in accordance with Best Practice Guide 3.
- If in doubt consult a qualified electrician. The luminaire must be installed in accordance with the latest IET Wiring Regulations, BS7671. If this product is being fitted as a replacement part to an existing installation account must be taken to the version of the wiring regulations it was installed to.
- Before commencing installation, ensure the fitting is complete with the fixings required.

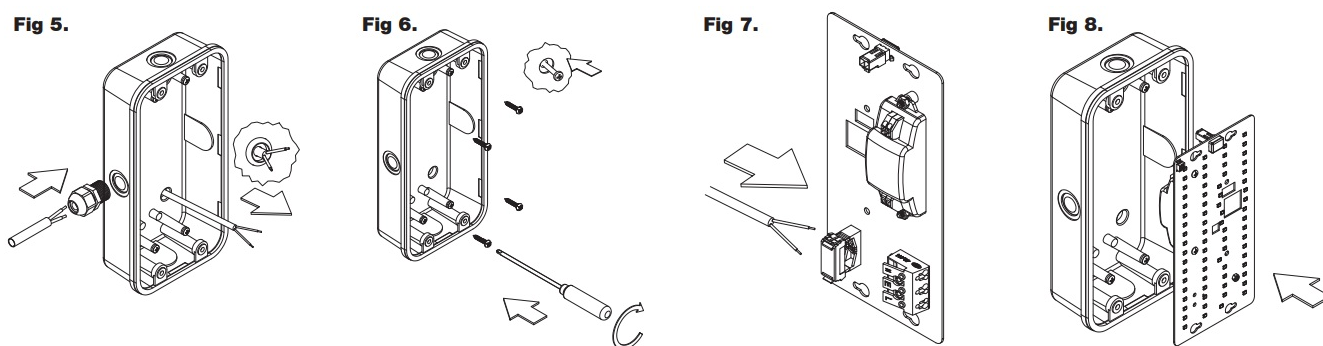
- The fitting should be mounted on a smooth, flat surface, noting the position of any pipes or wiring behind the fixed surface to prevent the risk of damage.
- The LED light source is not dimmable.
- The LED light source is not user-replaceable.
- The LED light source is replaceable by professionals only.
- The LED light source contained within this luminaire has an energy classification value of D.

## INSTALLATION

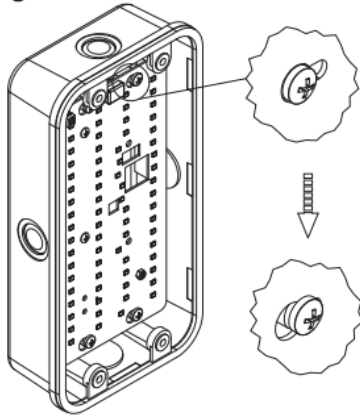
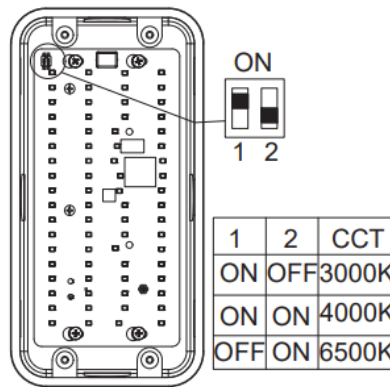
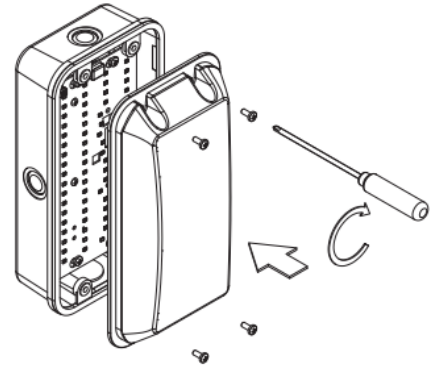
- Fig 1. Loosen the four screws and remove diffuser.
- Fig 2. Unlock LED array by sliding the PCB board over, allowing the screw heads to pass through the larger holes.
- Fig 3. Lift LED array away from base.
- Fig 4. Drill the 4 fixing points out of the base of the fitting.



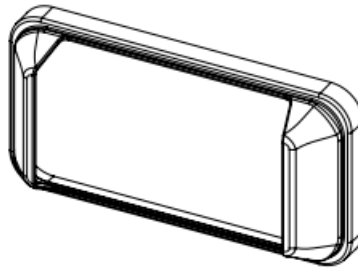
- Fig 5. Choose cable entry point by removing either the rear or side knockouts. Gland M20 (not supplied) must be used for all side knockouts.
- Fig 6. Using the 4 x fixing screws provided, fix the fitting onto the mounting surface.
- Fig 7. On the back of the LED array, terminate the cable accordingly and secure via the cable clamp.
- Fig 8. Refit the LED array into the base.



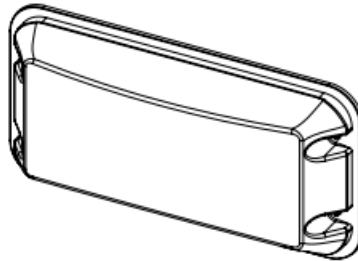
- Fig 9. Slide LED array back into original position to lock into place.
- Fig 10. Set colour temperature by adjusting the DIP switches accordingly
- Fig 11. Refit the diffuser and secure with the four securing screws supplied (Standard or Anti-Tamper)

**Fig 9.****Fig 10.****Fig 11.**

## Additional Accessories



OR5BT - Black Rectangular Trim



OR5RD - Red Rectangular Diffuser

## ABOUT COMPANY

- OVIA Limited, Scolmore House, Mariner, Lichfield Road Ind. Estate, Tamworth, Staffordshire, B79 7UL
- **Telephone:** 01827 300640
- **E-mail:** [technical@oviaUK.com](mailto:technical@oviaUK.com)
- **Website:** [www.oviaUK.com](http://www.oviaUK.com)

## Documents / Resources

	<p><a href="#">OVIA OR5 Rectangular LED Bulkheads</a> [pdf] Owner's Manual OR5, OR5-E, OR5 Rectangular LED Bulkheads, Rectangular LED Bulkheads, LED Bulkheads, Bulkheads</p>
--	---

## References

-  [Ovia Lighting | Manufacturer & distributor of electrical Wiring accessories & Lighting](#)

Manuals+.