



OVERMAX Ceiling Mount User Manual

[Home](#) » [OVERMAX](#) » OVERMAX Ceiling Mount User Manual 

OVERMAX

You • unlimited
Ceiling Mount
User Manual

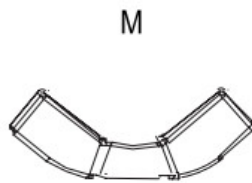
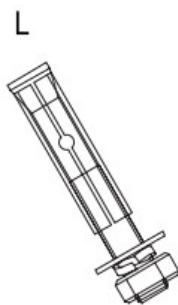
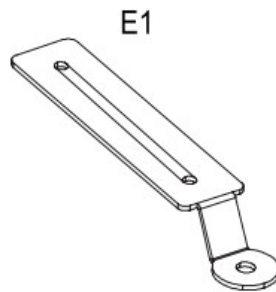
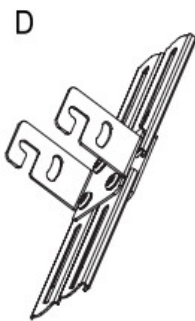
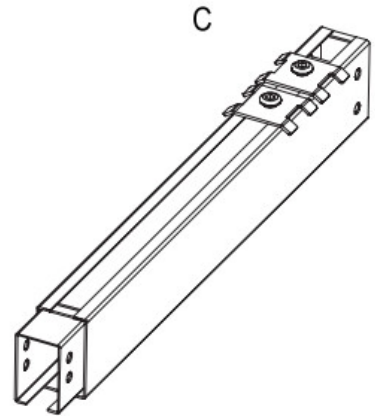
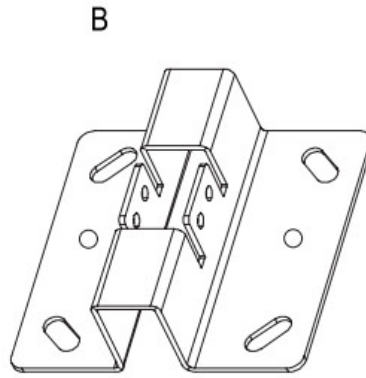
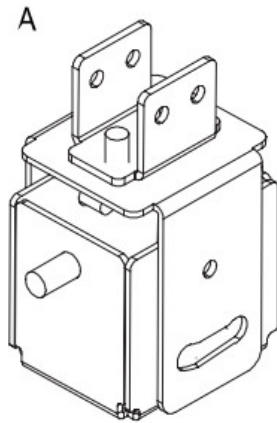
Contents

- [1 Ceiling Mount](#)
- [2 Introduction](#)
- [3 How to assemble and install](#)
- [4 Documents / Resources](#)

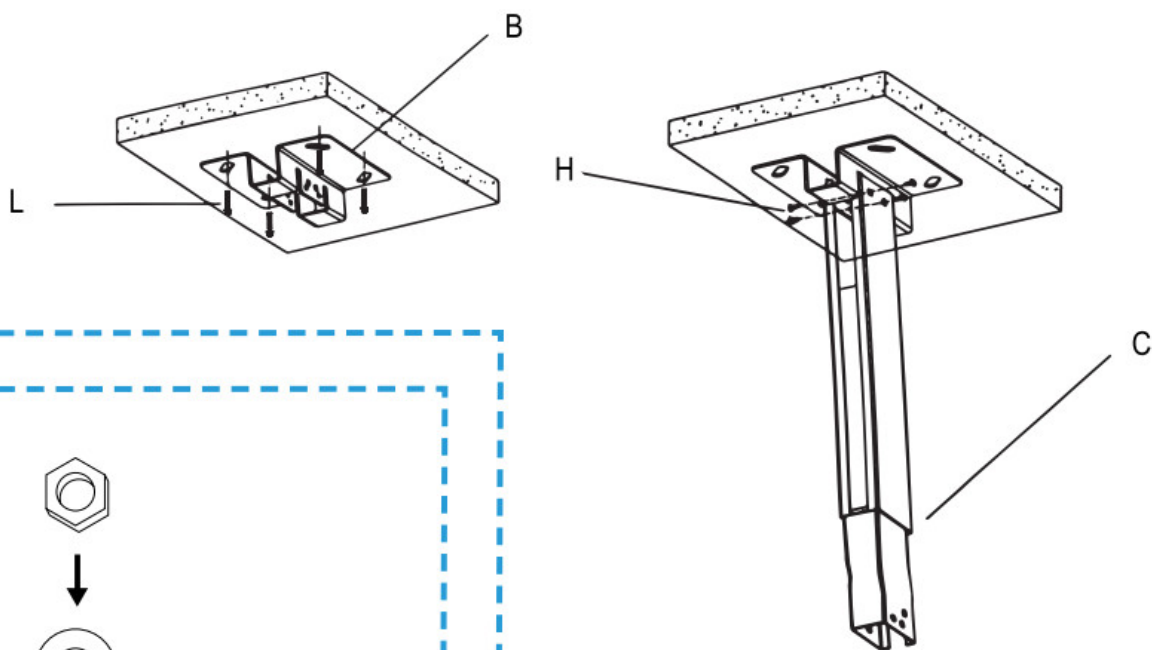
Ceiling Mount



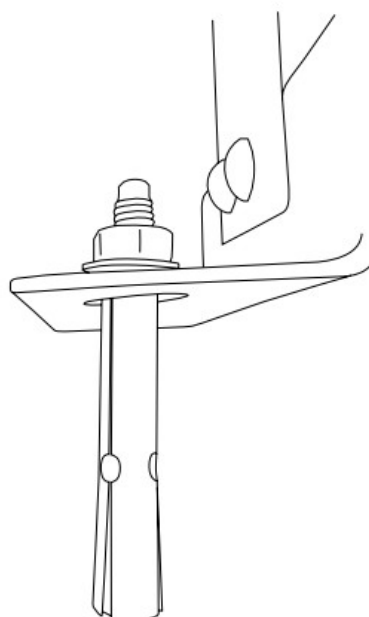
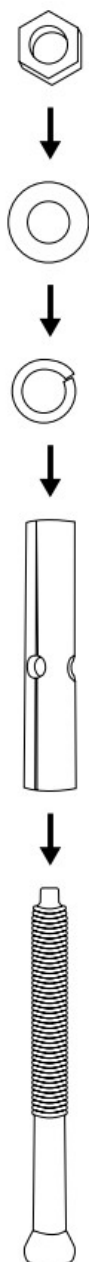
1



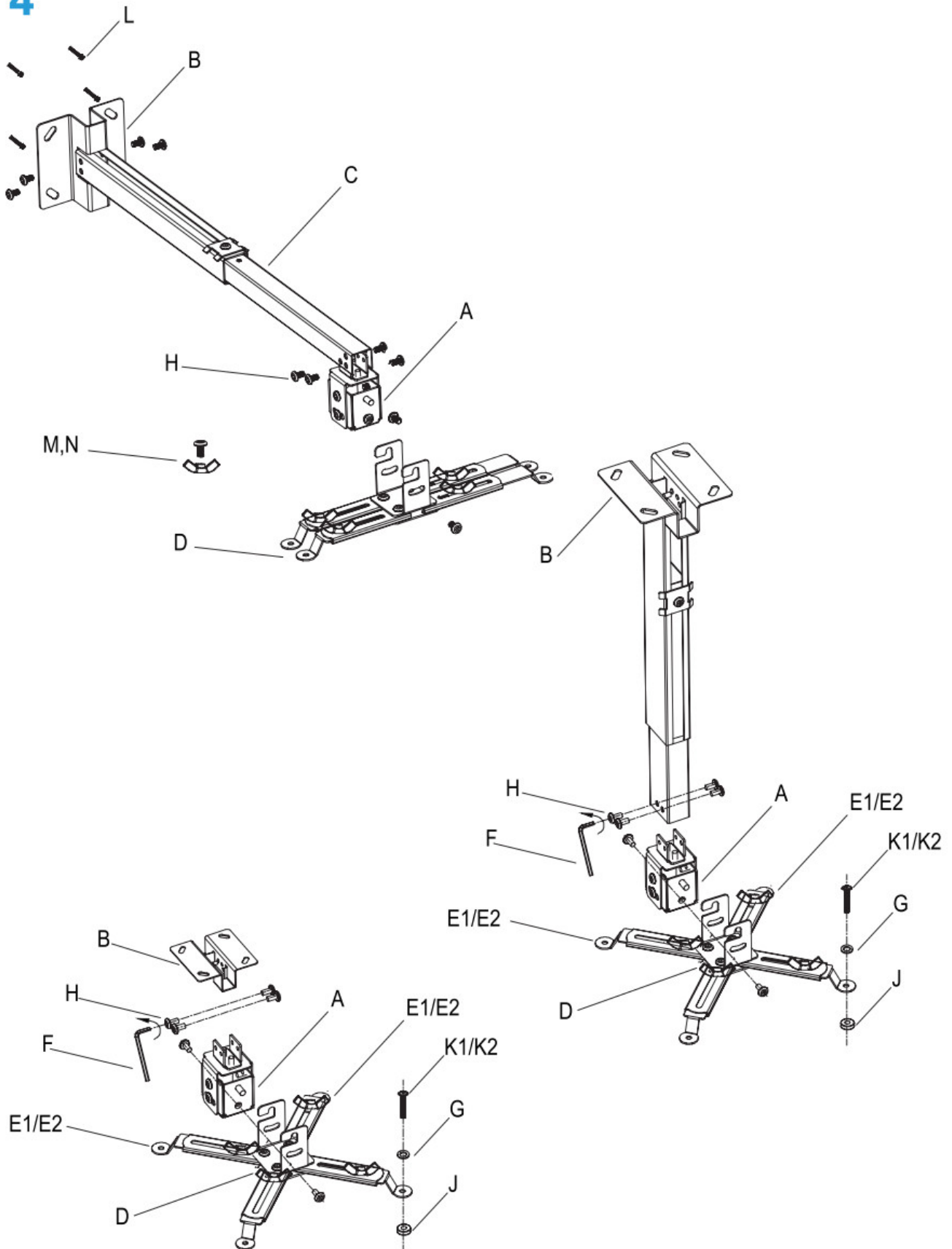
2



3



4



Introduction

Dear customer!

Thank you for placing trust in us and choosing Overmax.

Thanks to the use of high-quality materials and modern solutions, we provide you with a product perfect for

everyday use. We are convinced that the product will meet your requirements as it has been manufactured with utmost care. Before you use the product, please read this operating manual carefully.

Should you have any remarks or questions concerning the product, please do not hesitate to contact us:

pomoctechniczna@overmax.pl

Important

Please read this operating manual before you start using the product to see its functions and use them in accordance with intended use.

Note! The projector holder must only be installed on a concrete or brick wall with the use of fixing bolts supplied. The holder can also be mounted on the ceiling.

List of parts (fig. 1)

A – Head (x1)	H – Bolt M5x8 (x18)
B – Mounting plate (x1)	J – Washer (x4)
C – Guide (x1)	K1- Bolt M4x12 (x4)
D – Connecting member (x1)	K2 – Bolt M3x10 (x4)
E1 – Long fixing elements (x4)	L – Screw anchor M6x60 (x4)
E2 – Short fixing elements (x2)	M – Wing nut M6 (x4)
F – Hex key (x1)	N – Bolt M6x10 (x4)
G – Nut (x4)	

How to assemble and install

Use the bolts supplied to screw connecting members and, depending on your choice, attach the holder to the wall (fig. 2) with the use of screw anchors (fig. 3). The holder can also be mounted on the ceiling.

- You can adjust the length and height of the holder by extending the guide (C). To do so, unscrew the bolt, adapt the length of the guide and screw back on.
- You can adjust the project holder position by changing the location of the head on the guide.
- You can also choose to install it without a guide, only with the mounting plate (B) (fig. 4).
- You can adjust the projector holder through short and long fixing elements (E1/E2).
- It is compatible with projectors with a smaller track of bolts (i.a. Multipic 3.5, Multipic 5.1) and larger track of bolts (i.a. Multipic 4.1).
- The lifting capacity of the holder is 20 kg.


How to clean and maintain

Wipe with a wet cloth.

The pictures are for reference only, The real design of the products may differ from the pictures presented,

OVERMAX
You • unlimited
www.overmax.eu

Documents / Resources

<div><div>Ceiling mount</div><div><div>Instalaci3n al techo / Tope al tecto / Montaggio al soffitto / Montage au plafond de l'6difice / Mount de acoperi / Montaggio al soffitto / Montage au plafond de l'6difice / Montage au plafond de l'6difice</div></div><div></div><div><div>OVERMAX</div><div>TECHNOLOGY</div></div></div> <div><div><div>PL</div><div>EN</div><div>DE</div><div>IT</div><div>FR</div><div>ES</div><div>NL</div><div>UA</div><div>LT</div><div>HR</div></div><div><div>OVERMAX Ceiling Mount [pdf] User Manual</div><div>Ceiling Mount, Mount</div></div></div>

Manuals+