

OVERMAX
OVERMAX 120
Automatic Screen



OVERMAX 120 Automatic Screen User Manual

[Home](#) » [OVERMAX](#) » OVERMAX 120 Automatic Screen User Manual 

Contents

- [1 OVERMAX 120 Automatic Screen](#)
- [2 Introduction](#)
- [3 How to assemble and use](#)
- [4 How to clean and maintain](#)
- [5 Simplified EU declaration of conformity](#)
- [6 Documents / Resources](#)
 - [6.1 References](#)
- [7 Related Posts](#)

OVERMAX

OVERMAX 120 Automatic Screen



Automatic Screen120

User Manual

Introduction

Dear customer!

Thank you for placing trust in use and choosing Overmax.

Thanks to the use of high-quality materials and modern solutions, we provide you with a product perfect for everyday use. We are convinced that the product will meet your requirements as it has been manufactured with utmost care. Before you use the product, please read this operating manual carefully. Should you have any remarks or questions concerning the product, please do not hesitate to contact us:

pomoctechniczna@overmax.pl

Important

Please read this operating manual before you start using the product to see its functions and use them in accordance with intended use.

1. Do not repair or modify the device. Only an authorized service technician is allowed to perform these operations.
2. This device is not a toy. Do not let children play with it. Keep the device and remote control out of reach of children.
3. The device must not be used by children and persons with limited physical, sensory or mental capabilities, as well as persons who lack relevant knowledge and experience in using the device, unless their actions are supervised or they have been instructed on safe use of the device and related risks beforehand.
4. Check the device on a regular basis. Do not use the device if it is damaged. Do not try to repair the device on your own. If this is necessary, contact the service center.
5. The screen must not be folded. Do not touch the screen surface with fingers or hard items. Make sure the screen does not contact liquids.
6. Use the device away from sources of heat, high temperatures, direct sunlight, sources of ignition, and naked flame.
7. Connect the device to the source of power whose parameters correspond to parameters specified on the device label.

8. The device is intended for indoor use only.

Attention! Plug on the power supply cord is used as the disconnect device- during installation, ensure that the socket-outlet is easily accessible.

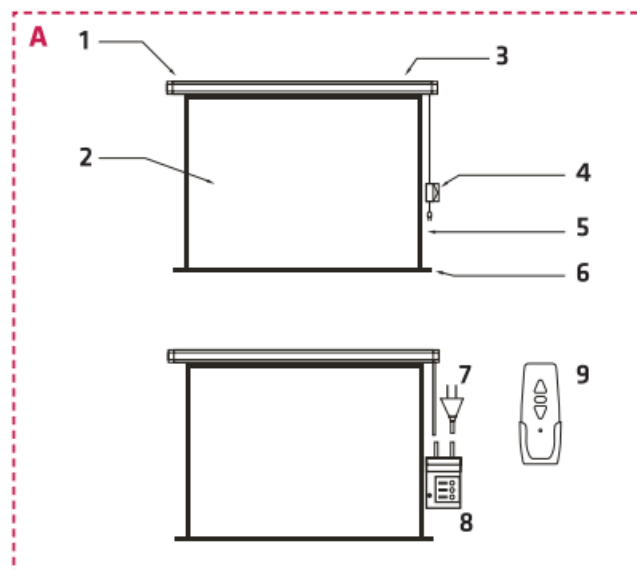


The product complies with requirements of the EU directives.

Pursuant to the Directive 2012/19/EU, this product is subject to selective collection. Do not dispose of the product together with domestic waste because it may pose a threat to the environment and human health. The worn-out product must be handed over to the electrics and electronics recycling center.

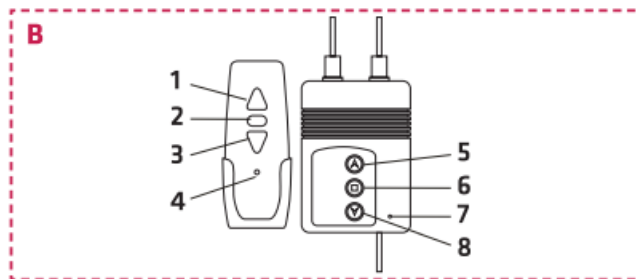
List of screen parts (fig. A)

1. Hook bracket
2. Screen
3. Case
4. and a. Manual control panel
5. Black frame
6. Lower slat of the screen
7. Plug
8. Remote control



Description of remote control parts (fig. B)

1. Up
2. Stop
3. Down
4. LED light

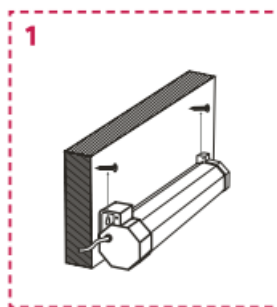


Description of manual control panel

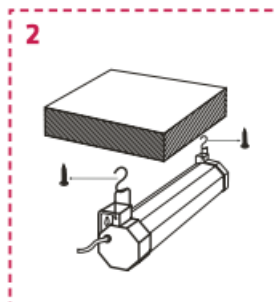
- 5. Up
- 6. Stop
- 7. LED light
- 8. Down

How to assemble and use

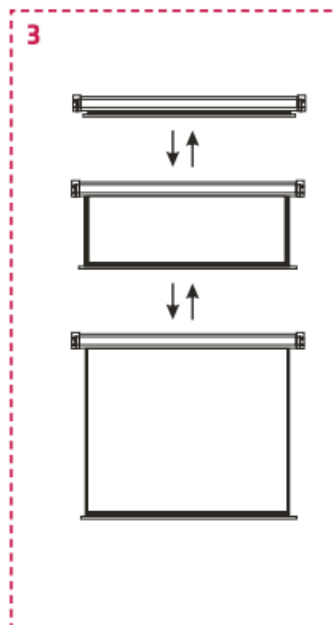
1. Be careful when taking the screen out of the box. Make sure the screen and accessories are in a good condition.
2. To mount the screen on the wall, fasten the brackets on screws. A suitable installation of the screen on the wall is presented in fig. 1.



3. To mount the screen on the ceiling, hook the brackets. A suitable installation of the screen on the ceiling is presented in fig. 2.



4. Install the case horizontally. When unrolled, the screen must hang freely and must not touch the floor.
5. Connect the screen to the source of power. Press the down key on the hand switch or remote control. The screen will start going down (fig. 3).



6. Press the stop key when the screen gets a desired position, otherwise the screen will stop in the lowest position.
7. Press the up key on the hand switch or remote control. The screen will start going up (fig. 3).
8. Press the stop key when the screen is in a desired position, otherwise the screen will return to the case.
9. Do not pull control cables because you may damage the device or pose a threat to yourself.
10. When you finish using, hide the screen in the case and unplug.

How to clean and maintain

- Clean the screen with a soft cloth.
- Do not use cleaning agents.
- Do not use water to clean the screen.
- Wipe the case with a wet cloth.
- When you finish using, hide the screen to avoid dirt.

The pictures are for reference only. The real design of the products may differ from the pictures presented.

Simplified EU declaration of conformity

Brand line Group Sp. z o. o. hereby declares that the "AUTOMATIC SCREEN 120" product complies with the directive: 2014/53/EU – RED Directive, 2011/65/EU – RoHS Directive Full content of EU declaration of conformity is available on the following website:

www.overmax.eu

Documents / Resources



[OVERMAX 120 Automatic Screen](#) [pdf] User Manual
120, MANUAL, 120 Automatic Screen, 120, Automatic Screen, Screen

References

- [User Manual](#)

Manuals+, Privacy Policy

This website is an independent publication and is neither affiliated with nor endorsed by any of the trademark owners. The "Bluetooth®" word mark and logos are registered trademarks owned by Bluetooth SIG, Inc. The "Wi-Fi®" word mark and logos are registered trademarks owned by the Wi-Fi Alliance. Any use of these marks on this website does not imply any affiliation with or endorsement.