

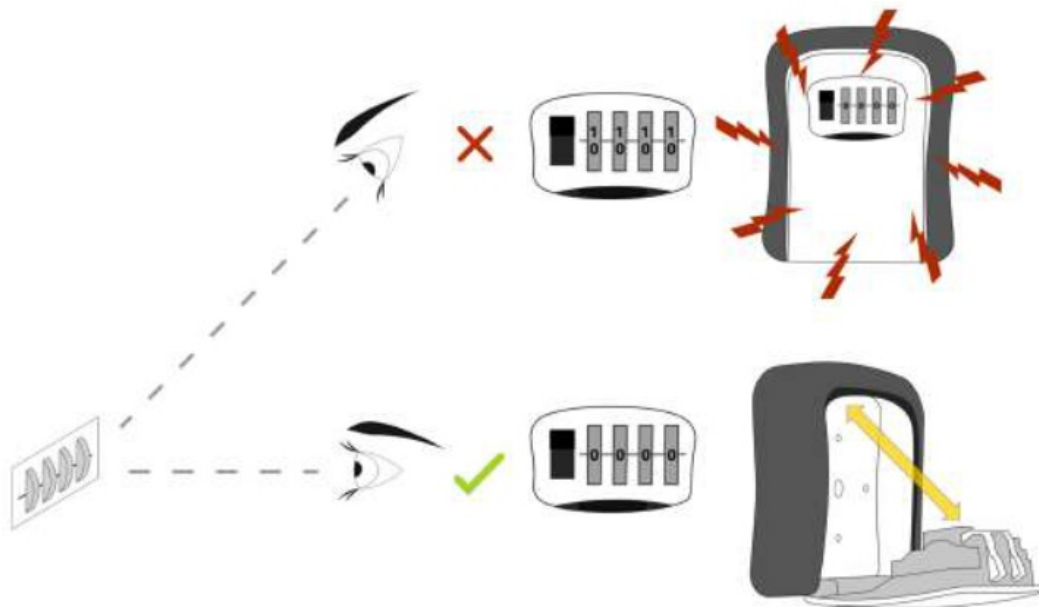


OUTSPOT Combination Key Safe Box Instructions

[Home](#) » [outspot](#) » OUTSPOT Combination Key Safe Box Instructions 



Combination Key Safe Box Instructions



Contents

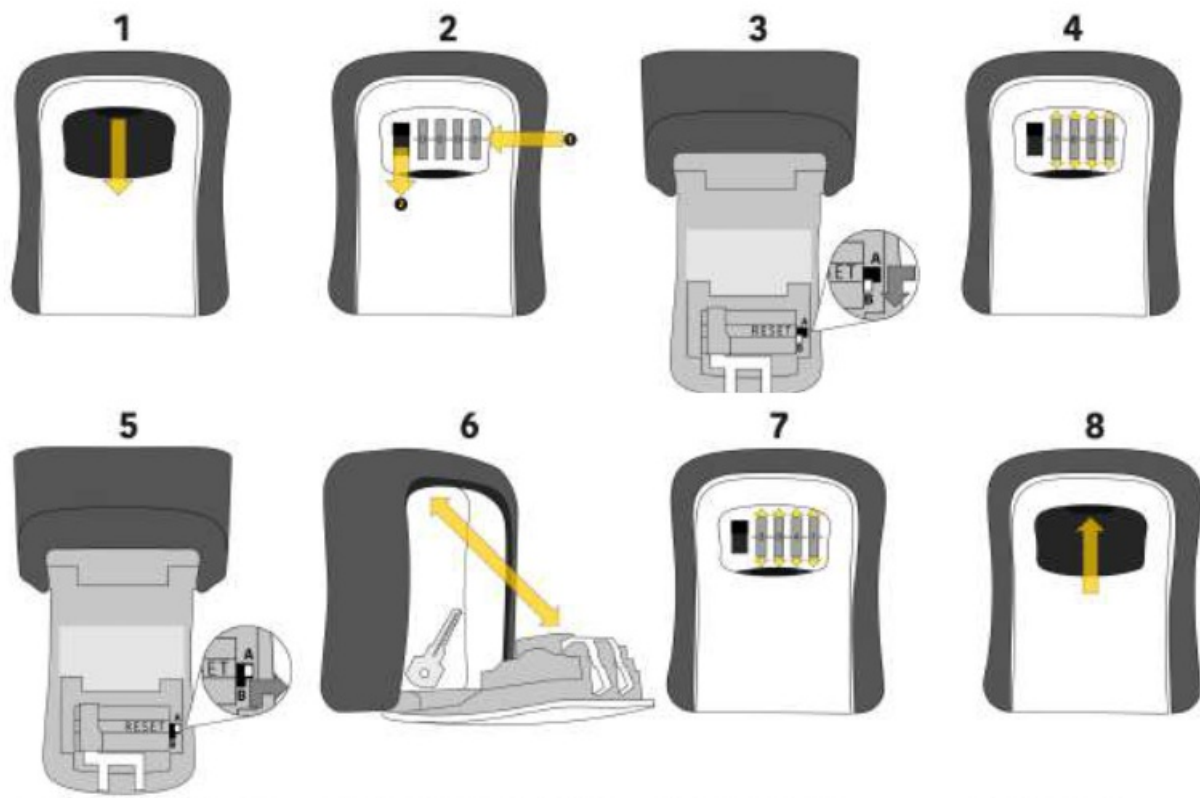
[1 Combination Key Safe](#)

[Box](#)

[2 Documents / Resources](#)

Combination Key Safe Box


Remove the lock from the wall before setting a new code. Always look straight on at the numbers on the dials. otherwise you could misalign them with the reference line this could cause the lack to jam once closed.



1. Open shutter
2. Enter code (default 0000) Move lever down to open door
3. Slide lever from A to
4. Set desired new code
5. Slide lever from B to A
6. Place item and close door
7. Jumble numbers
8. Close shutter

OUTSPOT

Documents / Resources

	<p>OUTSPOT Combination Key Safe Box [pdf] Instructions Combination Key Safe Box, Key Safe Box, Safe Box, Box</p>
---	--