



# OUTSHINE GAMING MDS17-2L Glint RGB Mikrofonarm Instruction Manual

[Home](#) » [OUTSHINE GAMING](#) » OUTSHINE GAMING MDS17-2L Glint RGB Mikrofonarm Instruction Manual 

## Contents

- [1 OUTSHINE GAMING MDS17-2L Glint RGB Mikrofonarm](#)
- [2 SAFETY INFORMATION](#)
- [3 WHAT IN THE BOX](#)
- [4 INSTALLATION INSTRUCTIONS](#)
- [5 MORE INFORMATION](#)
- [6 Documents / Resources](#)
  - [6.1 References](#)



OUTSHINE GAMING MDS17-2L Glint RGB Mikrofonarm



## **SAFETY INFORMATION**

### **IMPORTANT:**

- Failure to read, thoroughly understand, and follow all instructions can result in serious personal injury, damage to equipment, or voiding of factory warranty.

### **INSTRUCTIONS OF SAFETY AND WARNINGS:**

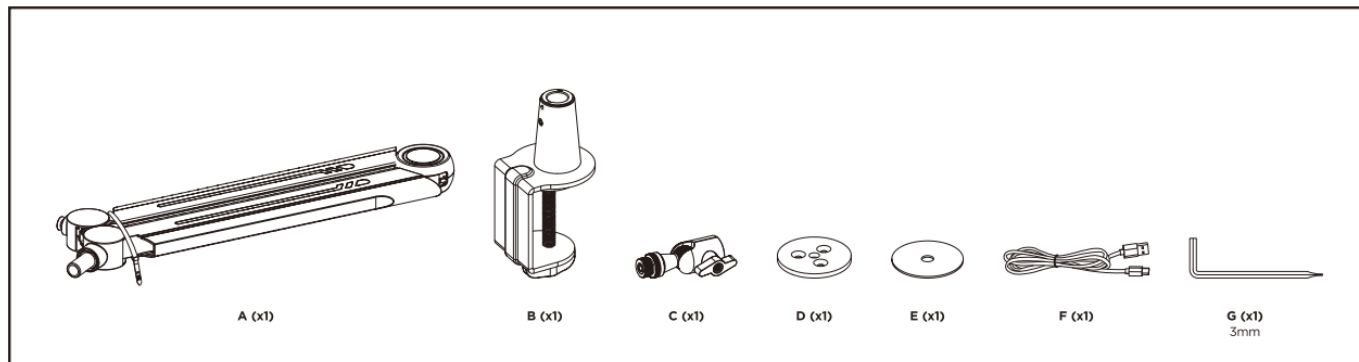
- Make sure that the mounting surface is strong enough to handle a mounted product and equipment.
- DO NOT EXCEED THE MAXIMUM LISTED WEIGHT CAPACITY.
- Always use an assistant or a mechanical lifting device to safely lift and position heavy products.
- Tighten screws firmly, but do not over tighten. Over tightening can cause product damage that greatly reduces the holding power.
- Keep a clear area and distance from moving parts when using the product.
- Use only as intended. Never stand, hang or climb on the product.
- This product is intended for indoor use only.
- Any attempts to reconstruct the construction aren't allowed
- This product may contain small items that could be a choking hazard if swallowed. Keep children away unless the product is intended for their use and all instructions and manuals are fully reviewed and understood by

them.

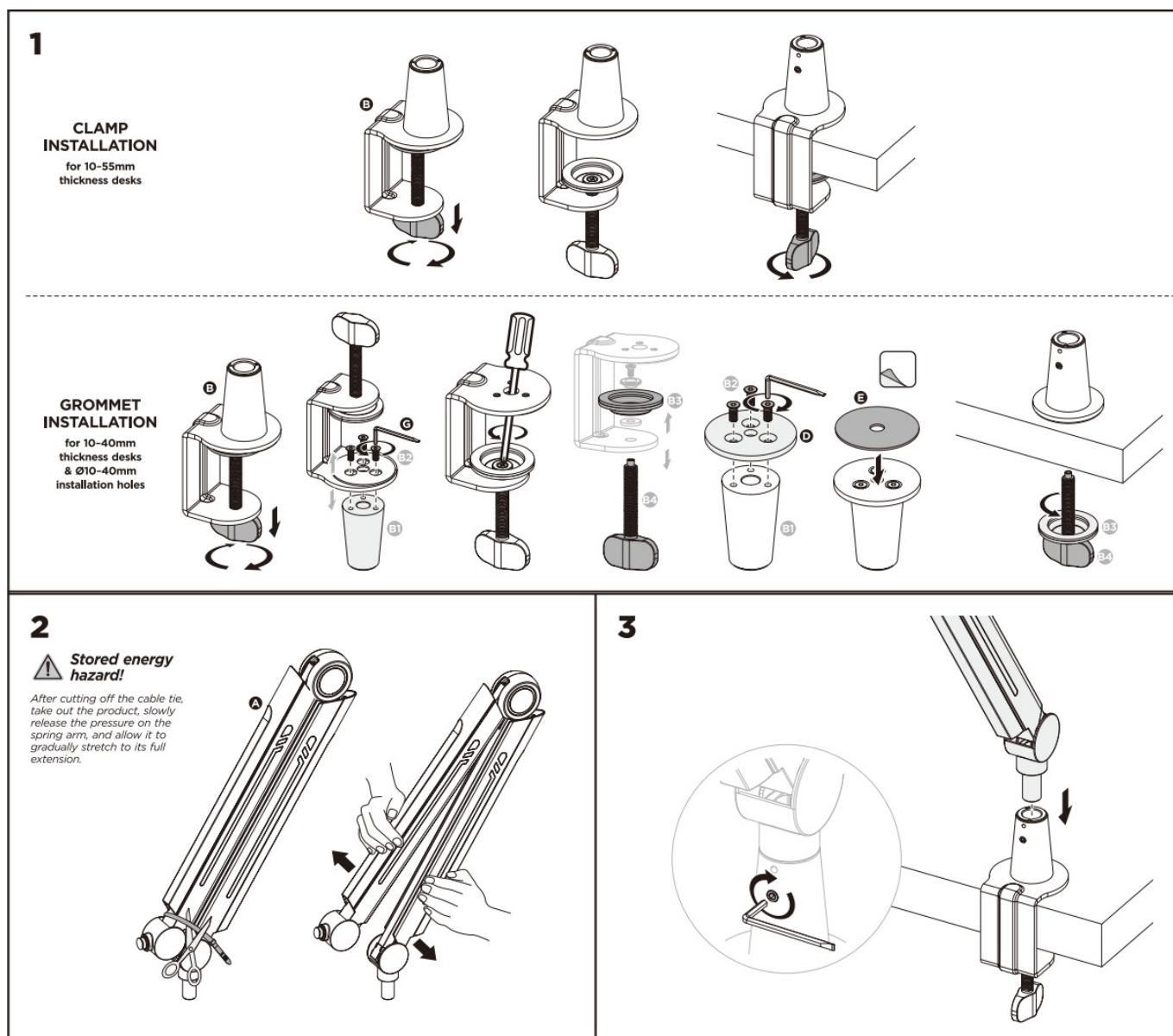
- Check that the product is secure and safe to use at regular intervals (at least every three months).

Should you ever have any questions or feel you require help please contact your place of purchase for assistance.

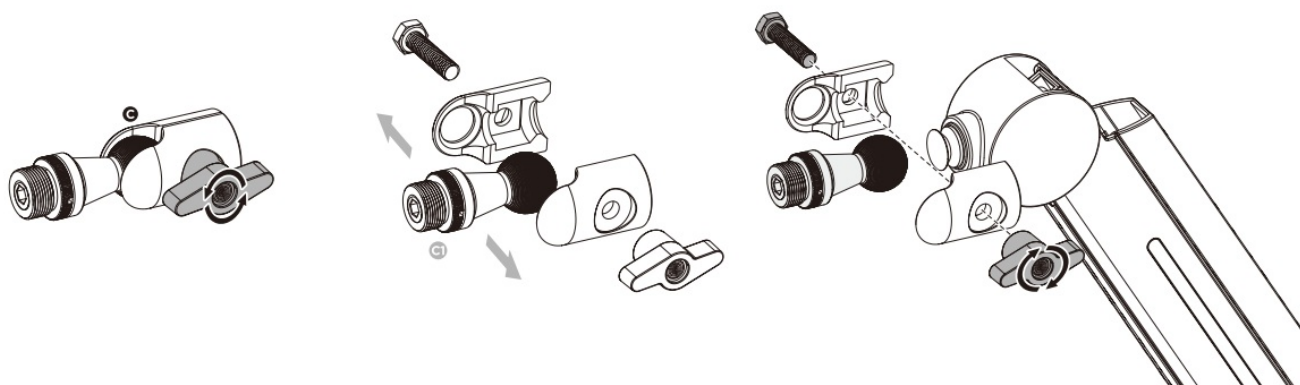
## WHAT IN THE BOX



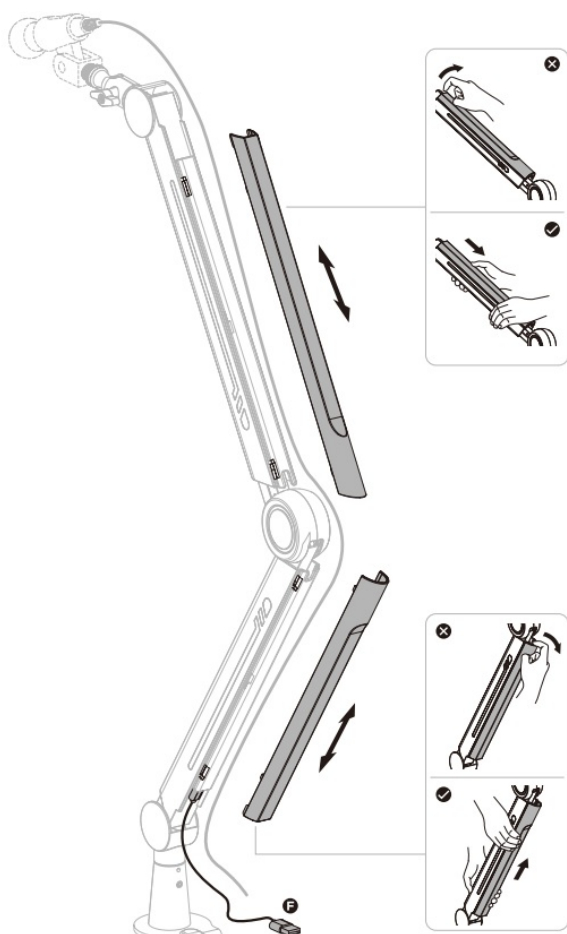
## INSTALLATION INSTRUCTIONS



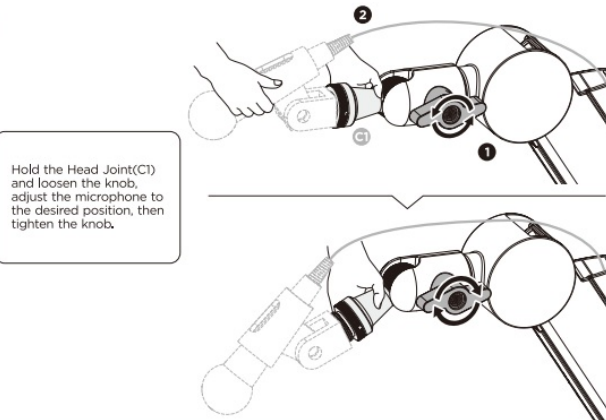
4



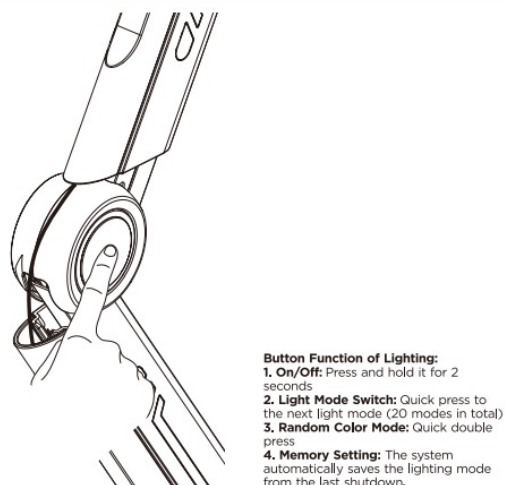
5



6



7



## MORE INFORMATION

## DIMENSION



## Disposal

The product with this mark indicates that this product shouldn't be disposed with other household wastes throughout the EU. To prevent possible harm to the environment or human health from uncontrolled waste disposal, recycle it responsibly to promote the sustainable reuse of material resources. To return your used device,

please use the local recycle service or contact your point of purchase to withdraw the product.

## More Info

- [www.outshinegaming.com](http://www.outshinegaming.com)
- [sales@outshinegaming.com](mailto:sales@outshinegaming.com)

## Documents / Resources

	<p><b><a href="#">OUTSHINE GAMING MDS17-2L Glint RGB Mikrofonarm</a></b> [pdf] Instruction Manual OGMDS17-2L, MDS17-2L, MDS17-2L Glint RGB Mikrofonarm, MDS17-2L, Glint RGB Mikrofonarm, RGB Mikrofonarm, Mikrofonarm</p>
---	---

## References

- [User Manual](#)

### Manuals+, Privacy Policy

This website is an independent publication and is neither affiliated with nor endorsed by any of the trademark owners. The "Bluetooth®" word mark and logos are registered trademarks owned by Bluetooth SIG, Inc. The "Wi-Fi®" word mark and logos are registered trademarks owned by the Wi-Fi Alliance. Any use of these marks on this website does not imply any affiliation with or endorsement.