



OttLite Wireless Charging LED Lamp with Colour Changing Base User Guide

[Home](#) » [OttLite](#) » OttLite Wireless Charging LED Lamp with Colour Changing Base User Guide 

Contents

- [1 OttLite Wireless Charging LED Lamp with Colour Changing Base](#)
- [2 PRODUCT REGISTRATION FORM](#)
- [3 WIRELESS CHARGING INSTRUCTIONS](#)
- [4 SAFETY WARNING](#)
 - [4.1 BATTERY REPLACEMENT](#)
- [5 ACCESSORIES AND SOFTWARE INFORMATION](#)
- [6 EU REGULATORY CONFORMANCE](#)
- [7 DECLARATION OF CONFORMITY](#)
- [8 Documents / Resources](#)
 - [8.1 References](#)
- [9 Related Posts](#)



OttLite Wireless Charging LED Lamp with Colour Changing Base



CONGRATULATIONS!

You've purchased the finest in natural lighting technology with your new OttLite® product.

PRODUCT REGISTRATION FORM

Please complete the enclosed Product Registration Form and return it today by mail, or register online by going to: OttLite.com/warranty

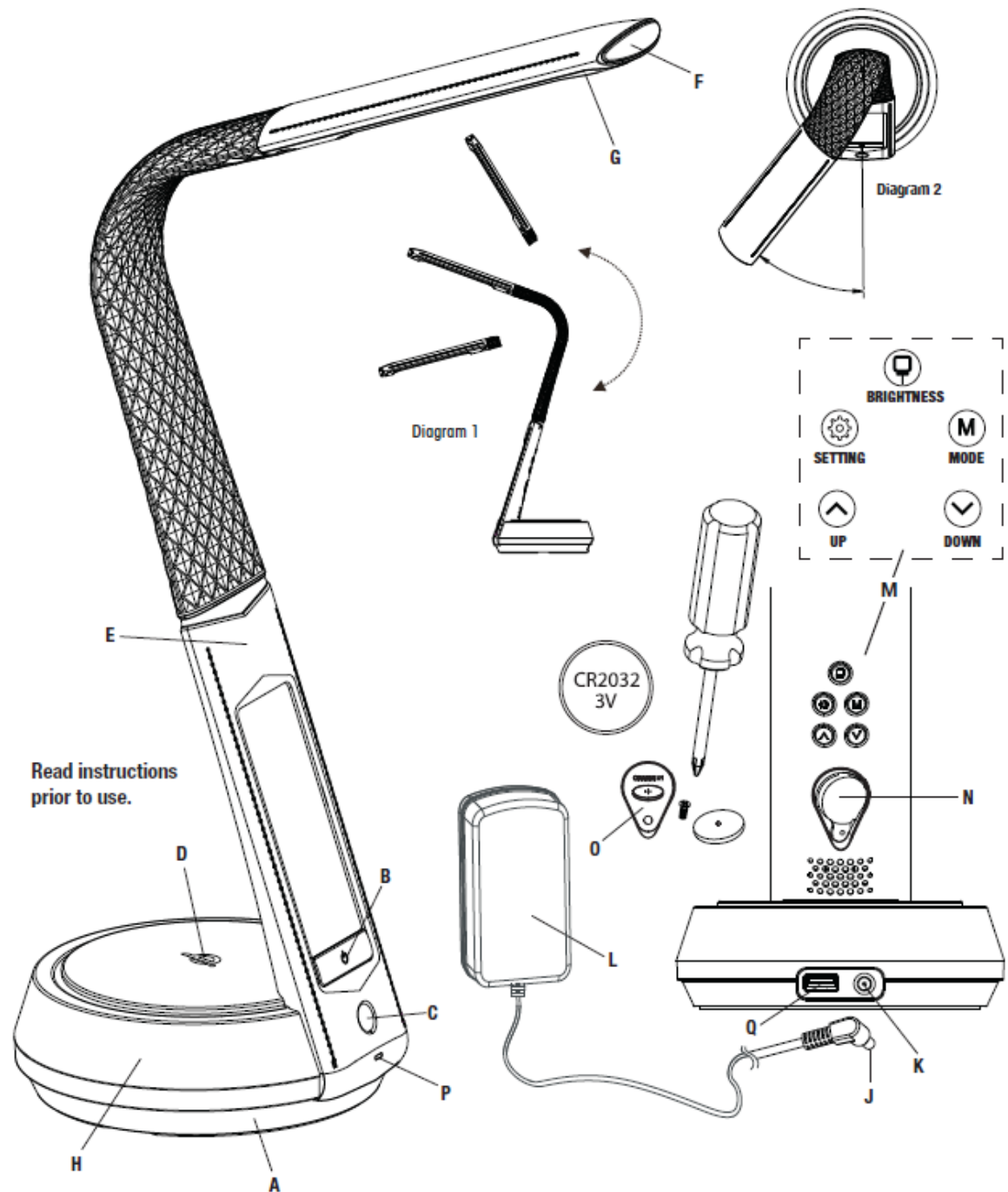
WARNING:

To prevent electric shock, make sure the lamp is not plugged in until all steps are complete.

NOTE: THIS UNIT IS FULLY ASSEMBLED

1. Remove the lamp from the packing, placing the lamp body base (A) flat on a steady surface.
2. Connect power adapter input (J) into connector (K) in the rear-bottom of the lamp.
3. Plug the power adapter (L) into a standard household 230V outlet. Note: Only use the supplied power adapter to avoid damage or fire.
4. Power switch (B) is a "touch" switch that controls ON/OFF the power, the LED brightness settings, and the color mode function of the lamp.
5. To power the main light, slightly touch the switch (B) to achieve the following:
 - Turn lamp "ON" to 1st brightness setting; touch the switch "once";
 - for 2nd brightness setting; touch the switch "two times";
 - for 3rd brightness setting; touch the switch "three times";
 - to turn the lamp "OFF"; touch the switch "four times".
6. This lamp provides three color modes. To adjust the lighting color mode slightly "press and hold" switch (B) for three seconds to switch light color temperature mode; 5000°K, 2700°K, 4000°K.
7. Touch button (C) to turn on the color-changing base. When the desired color is shown, touch button (C) again briefly to maintain that color, otherwise, colors will shift continuously. Touch and hold button (C) to turn off the

8. To reposition the light, hold the lamp base (A) steady and grasp either lamp body (E) or shade (F) depending on the needed adjustment.
9. Refer to Diagrams 1 and 2 for the lamp's maximum adjustment range. NOTE: DO NOT FORCE the shade outside the allowable adjustment range as excessive adjustment may cause damage.



Wireless charging requires a Qi-certified device. To determine if your device is Qi-certified, please visit the Wireless Power Consortium website.

- Place the device, which supports Qi wireless charging standard, face up in the middle of the Qi wireless charging icon (D).

- When the device is centered on the Qi wireless charging area (D), a solid RED light (P) will come on noting charging mode is active. NOTE: If the RED light is blinking this indicates the device is not charging. Your device should show charging is taking place.
- Check the charge level on your device periodically to determine when the device is fully charged.

NOTE: Product DOES NOT provide any indication of when the device is fully charged.

CAUTION!

The device may become warm during charging. This is normal and part of the process. Charging times vary by device.

REFER TO THE FOLLOWING ICON LEGEND FOR CONTROL PANEL (M), AS IT PERTAINS TO THE INSTRUCTIONS FOR VARIOUS SETTING FUNCTIONS BELOW.



- “SETTING BUTTON” – to set time and calendar; in alarm mode, push to turn off the alarm.



- “MODE BUTTON” – push to set alarm and snooze



- “UP BUTTON” – In setting mode, push to increase.



- “DOWN BUTTON” – In setting mode, push to decrease.



- “DISPLAY KEY” – Push the display key for suitable brightness.

CALENDAR AND CLOCK SETTING:

NOTE: Control Panel (M) to set Calendar and Clock is located behind lamp body (E).

- Under normal mode, press “SETTING BUTTON” to enter setting mode, and press “SETTING BUTTON” again for the next setting. The sequence of settings is:
HOUR – MINUTE – YEAR – DAY – MONTH.
- Press “SETTING BUTTON” to quit the setting, or it will automatically quit to normal mode if idle for 60 seconds.
- Under normal mode, press the “UP BUTTON” to switch between the “12h” and “24h” displays.

ALARM & SNOOZE FUNCTION SETTING:

- Under normal mode, press “MODE BUTTON” to enter alarm mode.
- Under alarm mode, press “SETTING BUTTON” to enter the alarm setting, and press “SETTING BUTTON” again for the next setting, the sequence of settings is:
HOUR – MINUTE – SNOOZE – MUSIC and then exit.

NOTE: There are 8-music tones to select.

- Press the “UP BUTTON” and “DOWN BUTTON” to adjust the alarm time sequence.
- Under alarm mode, press “UP BUTTON” and “DOWN BUTTON” to turn the ON/OFF alarm and snooze function. The “MUSIC NOTE” icon will light up on the display to indicate the alarm is set. “Zz” will appear on the display to indicate snooze is activated. Snooze can be set from 1 to 60 minutes.
- When the alarm time is reached, the alarm will ring for 1-minute, then snooze and ring again. Press “SETTING BUTTON” to turn OFF the alarm or touch “UP BUTTON” and “DOWN BUTTON” to activate snooze. NOTE: Snooze defaults to 60-minutes, if loss of power occurs.

TEMPERATURE SWITCH SETTING:

- In normal mode, touch the “DOWN BUTTON” to switch between °F and °C display.

CLOCK DISPLAY BRIGHTNESS:

- Press the “DISPLAY KEY” located above the “SETTING BUTTON” and “MODE BUTTON” to change the clock display brightness level.

SAFETY WARNING

TO REDUCE THE RISK OF FIRE, ELECTRIC SHOCK, OR INJURY TO PERSONS

1. Turn the lamp off and WAIT UNTIL LAMP HEAD (F) IS COOL before handling.
2. The LED panel (G) might get hot after several hours of continuous use DO NOT place your hands directly on LED light panel.
3. Never use an extension cord unless the plug can be fully inserted into the receptacles in the extension cord.
4. Do not alter the plug.
5. The lamp head included in this unit cannot be replaced by the consumer.
6. INDOOR USE ONLY.

NOTE:

The important safety instructions appearing in this instruction sheet are not meant to cover all possible conditions and situations that may occur. It must be understood that common sense, caution, and care must be used with any electrical product.

BATTERY REPLACEMENT

- This lamp uses a CR2032 battery. For battery replacement see the diagram. The battery compartment (N) is located behind the lamp body (E).
- To remove/install the button cell battery: use a screwdriver to remove the battery compartment door (O). The button cell battery is to be installed with the “+” or flat side facing upward.

BATTERY DISPOSAL:

Battery disposal should be in compliance with local regulations pertaining to the disposal of hazardous materials. DO NOT INCINERATE.

SAFETY WARNING:

- **CAUTION: DO NOT INGEST THE BATTERY; CHEMICAL BURN HAZARD!**
- This lamp contains a coin/button cell battery. If the coin/button cell battery is swallowed, it can cause severe internal burns in just two hours and can lead to death.
- Keep new and used batteries away from children.
- If the battery compartment does not close securely, stop using the product and keep it away from children.
- If you think batteries might have been swallowed or placed inside any part of the body, seek immediate medical attention.

NOTE: Coin/button cell batteries are small, single-cell devices having a diameter greater than their height.

CAUTION!

IF THE EXTERNAL FLEXIBLE CABLE OR CORD OF THIS LUMINAIRE IS DAMAGED, IT SHALL BE EXCLUSIVELY REPLACED BY THE MANUFACTURER OR ITS SERVICE AGENT OR A SIMILARLY QUALIFIED PERSON IN ORDER TO AVOID A HAZARD.

CAUTION!

THE LIGHT SOURCE OF THIS LUMINAIRE IS NOT REPLACEABLE; WHEN THE LIGHT SOURCE REACHES ITS END OF LIFE THE WHOLE LUMINAIRE SHALL BE REPLACED.

CAUTION:

Any change or modification to the product not expressly recognized by OttLite Technologies voids OttLite's responsibility for the proper function of the product.

POWER ADAPTER SPECIFICATION:

- Input: 100-240 V~, 50/60 Hz, 0.9 A
- Output: 12V 2.5A with a Male DC Plug

Qi CHARGER SPECIFICATION:

- Output: 5V 1A

THIS LAMP CONTAINS a 5V, 2.1A USB output port (Q) located on the bottom rear of the lamp. USB ports can charge items such as tablets, cellular phones, etc. The "Qi" symbol is a trademark of the Wireless Power Consortium. All phones with integrated wireless charging support "Qi".

WARNING: FIRE AND ELECTRIC SHOCK HAZARD

- Do not expose the charger to liquid, moisture, humidity, or rain. Do not use the charger near a bathtub, sink, sauna, pool, or steam room. Exposing of the charger to moisture could result in electric shock.
- Do not drop, disassemble, open, crush, bend, deform, puncture, shred, microwave, incinerate, paint, or insert foreign objects into the charger. Such actions could result in electric shock.
- Clean the charger only with a dry cloth
- Do not expose the charger to extremely high or low temperatures
- Do not expose the charger to sources of excessive heat, such as sunlight, fire, etc. Do not place the charger near open fire sources, such as gas burners, candles, or fireplaces, and avoid contact with direct solar radiation. Do not place any candles or other open-flame sources on the device. Make sure that the charger has sufficient ventilation.

ACCESSORIES AND SOFTWARE INFORMATION

It is recommended that the following accessories should be used:

The product software version is 2250-V1.0. Software updates will be released by the manufacturer to fix bugs or enhance functions after the product has been released. All software versions released by the manufacturer have been verified and are still compliant with the related rules. All RF parameters (for example, frequency range and output power are not accessible to the user, and cannot be changed by the user. After evaluation, the product was satisfied with the RED Directive RF exposure required while used 20cm away from the human body.

EU REGULATORY CONFORMANCE

Frequency bands and power (a) Frequency bands 110-205KHz. (b) Maximum radiofrequency power transmitted in the frequency bands in which the radio equipment operates: The maximum power for all bands is less than the highest limit value specified in the related Harmonized Standard. The frequency bands and transmitting power (radiated and/or conducted) nominal limits applicable to this radio equipment are as follows: 6dBuA/m at 10m distance.

Disposal of Old Electrical & Electronic Equipment

This symbol on the product or on its packaging indicates that this product (including batteries) shall not be treated as household waste. Instead, it shall be handed over to the applicable collection point for the recycling of electrical and electronic equipment. By ensuring this product is disposed of correctly, you will help prevent potential negative consequences for the environment and human health, which could otherwise be caused by inappropriate waste.

For more detailed information about recycling of this product, please contact your local Council, your household waste disposal service or the shop or source where you purchased the product.

DECLARATION OF CONFORMITY

- **PRODUCT:** B22FS Wireless Charging LED Lamp with Colour Changing Base

MANUFACTURER:

OttLite Technologies, Inc.


1715 N. Westshore Blvd. Suite 950, Tampa, FL 33607. USA Declares CE marking in accordance with the following EU directives and normative standards. Hereby, OttLite Technologies Inc. declares that the equipment type B22FS is in compliance with Directive 2014/53/EU. working range: 110-205KHz Transmitting frequency: -22.4 dBuA/m at 10m distance.

DIRECTIVES:	STANDARDS:
Low Voltage Directive 2014/35/EU	EN 60958-1:2015 Luminaires – +A1:2021 Part 1: General requirements and tests
	EN 60598-2-4:2018 General Purpose Luminaire; Portable Requirements
	EN 62031:2008 LED modules for general lighting safety +A1:2013+A2:2015 specifications
	EN 62493:2015 Assessment of lighting equipment related to human exposure to electromagnetic fields
	EN 60950-1:2006 Information technology equipment. Safety. General requirements.

	EN 61347-2-11:2008 Lamp Control Gear – Part 2-11: Particular requirements for miscellaneous electronic circuits used with luminaires	
	EN 61347-1:2015	General and safety requirements for lamp controlgear for use on D.C. supplies
	EN 61347-2-11: 2001 General and safety requirements for miscellaneous electronic circuits used with luminaires	
EMC Directive 2014/30/EU	EN 55015:2020	EMC for Luminaires
	EN 61547:2009	EMC Immunity
	EN 61000-3-2:2021	Current Harmonics
	EN 61000-3-3:2019	Voltage Fluctuations
	EN 62311:2008	Exposure Restrictions for EMF (0Hz – 300 GHz)
RED Directive 2014/53/EU	Safety and Health (Article 3.1a)	EN 62311: 2020
		EN 60598-1: 2015 + A1:2018
		EN 60598-2-4: 2018
		EN 62368-1:2014+A11:2017
	EMC (Article 3.1b)	EN IEC 55015:2019/A11:2020
		EN 61547: 2009
		EN 61000-3-2: 2014
		EN 61000-3-3: 2013
		ETSI EN 301 489-1 V2.2.3 (2019-11)
		ETSI EN 301 489-3 V2.1.1 (2019-03)
	Radio (Article 3.2)	ETSI EN 303 417 V1.1.1 (2017-09)

Tampa, May 2021 | K. Albinus | Quality Assurance.

Documents / Resources

	OttLite Wireless Charging LED Lamp with Colour Changing Base [pdf] User Guide CS2QC00Z-UK, CS2QCG5Z-UK, 1649270, INS220717, Wireless Charging LED Lamp with Colour Changing Base, Wireless Charging LED Lamp, Wireless LED Lamp, LED Lamp, LED Lamp with Colour Changing Base
---	--

References

-  [OttLite Warranty Information](#)

