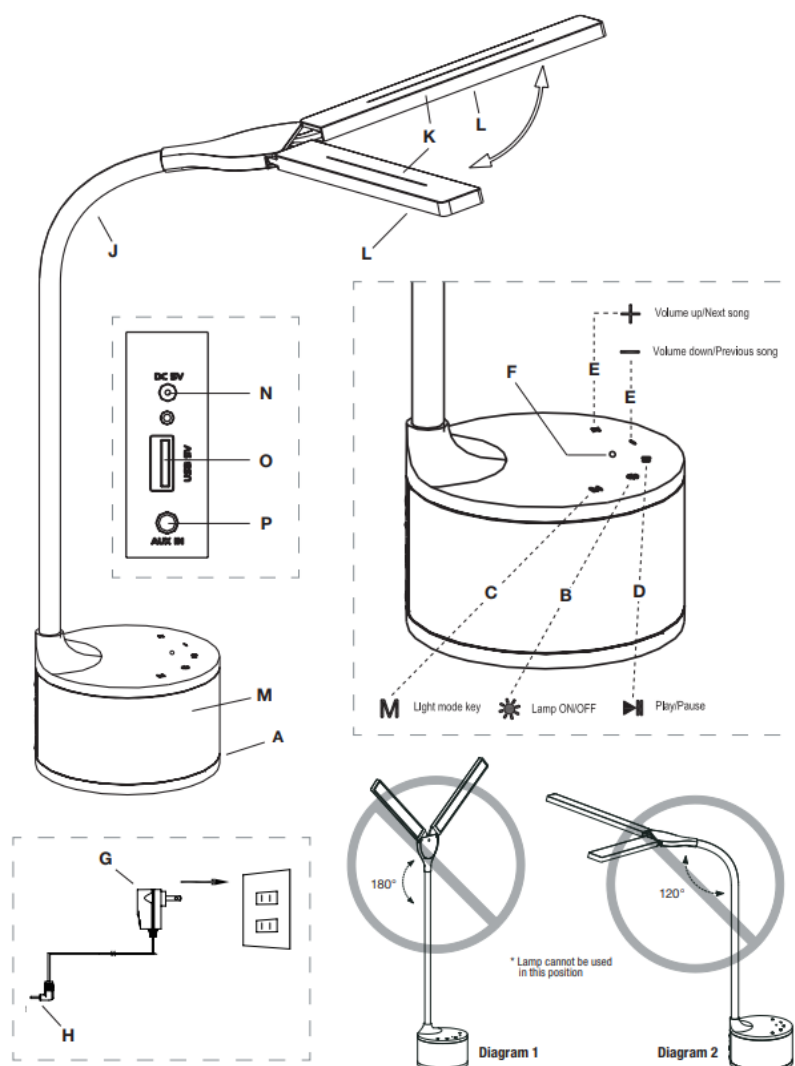




OttLite NS2009-SHPR Dual Shade LED Lamp with Bluetooth Speaker User Manual

[Home](#) » [OttLite](#) » OttLite NS2009-SHPR Dual Shade LED Lamp with Bluetooth Speaker User Manual 



Contents

1 CONGRATULATIONS!

2 IC WARNING

3 SAFETY WARNING:

**4 Documents /
Resources**

5 Related Posts

CONGRATULATIONS!

You've purchased the finest in natural lighting technology with your new OttLite® product.

PRODUCT REGISTRATION FORM

Please complete the enclosed Product Registration Form and return it today by mail, or register online by going to: OttLite.com/warranty

NOTE: THIS UNIT IS FULLY ASSEMBLED

1. Remove lamp from packing placing lamp body base (A) flat on a steady surface.
2. Connect the AC Adapter input (H) into the connector (N) in the rear top of the lamp.
3. Plug the AC adapter (G) into a standard household 120V AC outlet. Note: Only use the supplied AC adapter to avoid damage or fire.
4. This lamp offers both LED dimming and color mode functions.
5. Turn the lamp ON & OFF by using the power "touch" switch (B) located in the front upper side of the base (A).
6. To power LED lighting, slightly touch switch (B) to achieve the following:
 - to turn lamp "ON"; touch the switch "once"
 - to turn lamp "OFF"; touch the switch a "second" time.
7. To power LED dimmer setting, slightly touch switch (B) to turn "ON" lamp and achieve the following:
 - to operate dimmer function; continuously "press" switch until the light reaches its lowest setting or "stop" pressing switch when reaching desired lower light level.
 - after reaching desired lower light level, continuously "press" switch again until reaching the original setting.

NOTE: If the dimmer function was employed prior to turning the "OFF" lamp, the lamp will return to the lamp setting last employed unless disconnected from the adaptor.
8. To adjust lighting color mode: touch "M" key (C) to switch light color temperature mode; 5000°K, 4000°K, 2700°K. NOTE: 4000°K is the default color mode.
9. This lamp features a stereo speaker (M) with Bluetooth pairing and auxiliary device direct plug-in capability to play music directly through the speaker. Auxiliary input requires a 3.5mm audio cable (included) to connect your device to the unit.
10. Bluetooth pairing can be turned ON & OFF by using the "play/pause" touch switch (D) located base surface panel. To engage Bluetooth pairing operation perform the following:
 - Press and hold Bluetooth touch switch (D) to engage speaker (M), Bluetooth indicator light (F) begins to continually "flash" meaning it is "ready to pair";
 - Engage desired handheld device (such as mobile phone, tablet, etc.) by searching for device "OttLite" (Lamp with Bluetooth® Speaker) on handheld device Bluetooth settings, click the device name to successfully pair and connect the Bluetooth function.
 - The blue light will "slowly" flash showing a successful connection has been made.
11. Perform the following to play music directly to the speaker using an auxiliary device plug-in feature:

- Press and hold Bluetooth touch switch (D) to engage speaker (M) until Bluetooth indicator light (F) begins to flash. At this time the speaker is the default to Bluetooth mode.
 - Insert 3.5mm audio cable (included) into AUX connection (P) in the rear-bottom of the lamp.
12. Press and hold touch switches “+” and “-” (E) for volume adjustment. Press and hold touch switch “+” to increase volume or press and hold touch switch “-” to reduce volume.
 13. Quickly press touch switches “+” and “-” (E) to make a song track change. Touch switch “+” to advance to the next song. Touch switch “-” to go back to the previous song. NOTE: Skip function for track change is only applicable to Bluetooth mode.
 14. To reposition the light, hold base (A) steady then grasp and adjust either lamp arm (J) or shade (K) depending on the needed position.
 15. Refer to Diagrams 1 and 2 for lamp maximum adjustment range.

NOTE: DO NOT FORCE the shade or lamp body rotation outside the allowable adjustment range as excessive adjustment may cause damage.

IC WARNING

This device complies with Industry Canada license-exempt RSS standard(s). Operation is subject to the following two conditions:

- (1) this device may not cause interference, and
- (2) this device must accept any interference, including interference that may cause undesired operation of the device.

The device meets the exemption from the routine evaluation limits in section 2.5 of RSS 102 and compliance with RSS-102 RF exposure, users can obtain Canadian information on RF exposure and compliance. This transmitter must not be co-located or operating in conjunction with any other antenna or transmitter. This equipment should be installed and operated with a minimum distance of 20 centimeters between the radiator and your body.

SAFETY WARNING:

TO REDUCE THE RISK OF FIRE, ELECTRIC SHOCK, OR INJURY TO PERSONS

1. Turn the lamp off and WAIT UNTIL LAMP HEAD (K) AND ADAPTER (G) ARE COOL before handling.
2. The LED panel (L) might get hot after several hours of continuous use, DO NOT place your hands directly on the LED light panel.
3. Never use an extension cord unless the plug can be fully inserted into the receptacles in the extension cord.
4. Do not alter the plug.
5. The lamp head included with this unit cannot be replaced by the consumer.
6. INDOOR USE ONLY.

NOTE: The important safety instructions appearing in this instruction sheet are not meant to cover all possible conditions and situations that may occur. It must be understood that common sense, caution, and care must be used with any electrical product.

CAUTION! IF THE EXTERNAL FLEXIBLE CABLE OR CORD OF THIS LUMINAIRE IS DAMAGED, IT SHALL BE EXCLUSIVELY REPLACED BY THE MANUFACTURER OR ITS SERVICE AGENT OR A SIMILAR QUALIFIED PERSON IN ORDER TO AVOID A HAZARD. INDOOR USE ONLY.

FCC PART 15

Note: This equipment has been tested and found to comply with the limits for a Class B digital device, pursuant to Part 15 of the FCC rules. These limits are designed to provide reasonable protection against harmful

interference in a residential installation. This equipment generates, uses, and can radiate radio frequency energy and, if not installed and used in accordance with the instructions, may cause harmful interference to radio communications. However, there is no guarantee that the interference will not occur in a particular installation. If this equipment does cause harmful interference to radio or television reception, which can be determined by turning the equipment off and on, the user is encouraged to try to correct the interference by one or more of the following measures:

- Reorient or relocate the receiving antenna.
- Increase the separation between the equipment and receiver.
- Connect the equipment into an outlet on a circuit different from that of the receiver.
- Consult the dealer or an experienced radio/TV technician for help. Changes or modifications not expressly approved by the party responsible for compliance could void the user's authority to operate the equipment. This device complies with Part 15 of the FCC Rules. Operation is subject to the following two conditions: (1) this device may not cause harmful interference, and (2) this device must accept any interference received, including interference that may cause undesired operation. CAN ICES-003 (B)/NMB-003 (B) CAUTION: Any change or modification to a product not expressly recognized by OttLite Technologies voids OttLite's responsibility for the proper function of the product.

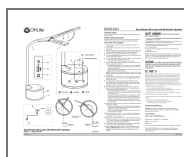
AC/DC ADAPTER

Input: AC 100-240V, 50/60 Hz, 0.7A Output: 5V DC, 3A with a Male DC Plug Output power: 2.75W (lamp) + 2.5W (speaker) Speaker: 1 inch, 4 ohms

Bluetooth V4.2 3.5mm audio cable is required for direct plug-in connection (included) THIS LAMP CONTAINS a 5V-2.1A USB output port (O) located on the base of the lamp. USB port can charge such items as tablets, cellular phones, etc.

Dual Shade LED Lamp with Bluetooth ® Speaker
NS2009 NS2009-SHPR
INS180415

Documents / Resources



[OttLite NS2009-SHPR Dual Shade LED Lamp with Bluetooth Speaker](#) [pdf] User Manual
NS2009-SHPR, NS2009, Dual Shade LED Lamp with Bluetooth Speaker