



## OttLite CSR0700C Series Switch 3 in 1 Rechargeable Task Lamp User Manual

[Home](#) » [OttLite](#) » OttLite CSR0700C Series Switch 3 in 1 Rechargeable Task Lamp User Manual 

### Contents

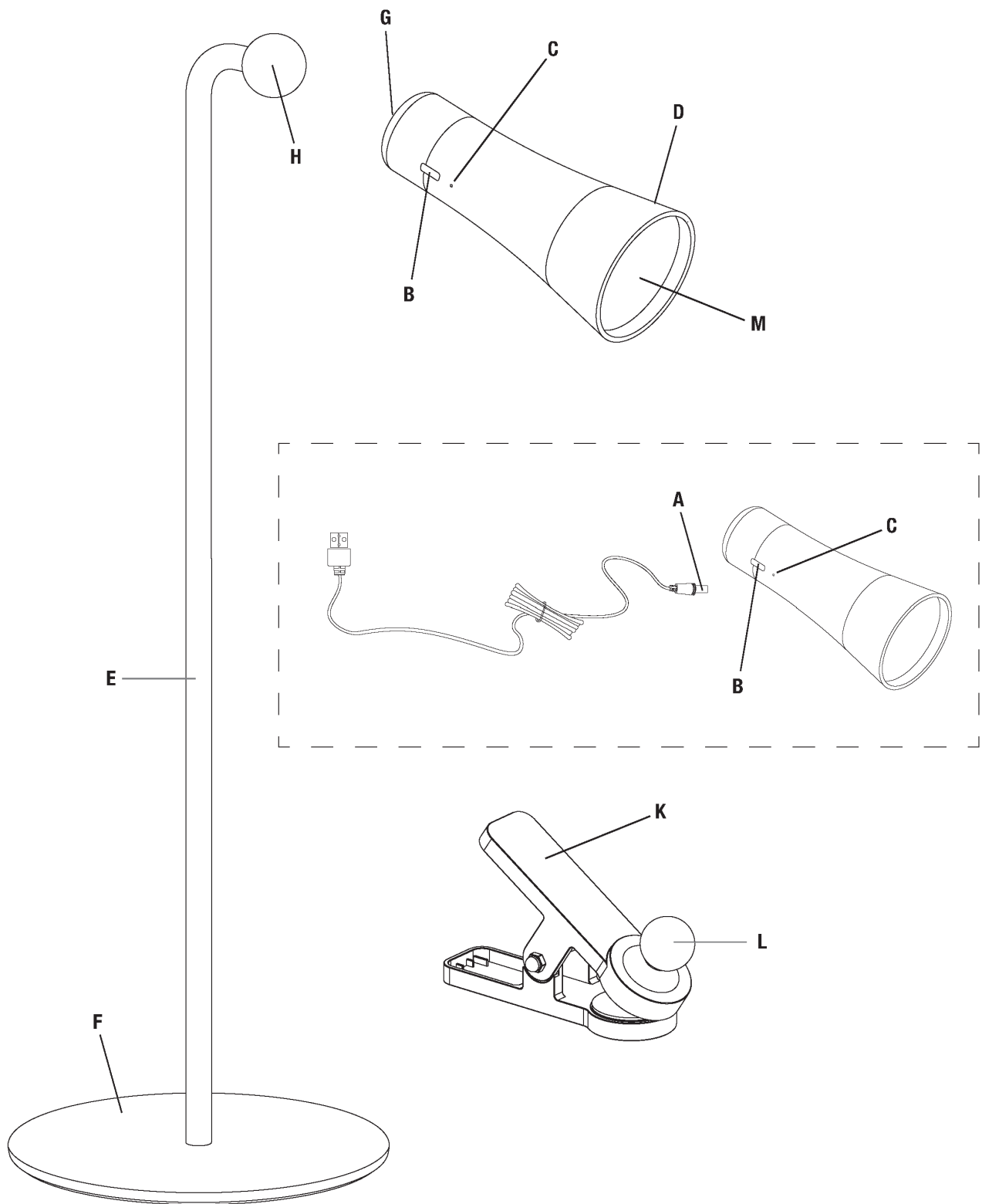
- 1 OttLite CSR0700C Series Switch 3 in 1 Rechargeable Task Lamp
- 2 Switch 3-in-1 Rechargeable Task Lamp
- 3 CONGRATULATIONS!
- 4 PRODUCT REGISTRATION FORM
- 5 LIGHT OPERATION
- 6 ASSEMBLY FOR DESK LIGHT USE
- 7 FOR CLIP-ON LIGHT USE
- 8 SAFETY WARNING:
- 9 FCC PART 15
- 10 SPECIFICATIONS
- 11 ACCESSORIES
- 12 FAQ
  - 12.1 Q: What should I do if the light does not turn on?
  - 12.2 Q: Can I replace the lamp head myself?
  - 12.3 Q: How do I register my product for warranty?
- 13 Documents / Resources
  - 13.1 References
- 14 Related Posts

**OttLite CSR0700C Series Switch 3 in 1 Rechargeable Task Lamp**

**USER MANUAL**

## Switch 3-in-1 Rechargeable Task Lamp

CSR0700C CSR07G5W-CA CSR07G5W-SHPR



**CONGRATULATIONS!**

You've purchased the finest in natural lighting technology with your new OttLite® product.

## PRODUCT REGISTRATION FORM

Please complete the enclosed Product Registration Form and return it today by mail, or register online by going to: [OttLite.com/warranty](http://OttLite.com/warranty)

**WARNING:** To prevent electric shock, make sure the lamp is not plugged in until all steps are complete.

**NOTE:** This product can be used as a desk light, a clip-on light, and as a portable handheld light.

## LIGHT OPERATION

1. Fully charge light before use. Connect the USB-C cable (A) to the USB-C port (B) on light and to a 5V / 1A standard USB power source such as a laptop computer or adapter (not included). Red light (C) on the light indicates charging. The red light will turn green when battery is fully charged. Once charging is complete, disconnect the USB-C cable.
2. To turn the light "ON" to 1st brightness setting; touch the switch (D) "once".
3. For 2nd brightness setting; touch the switch "two-times".
4. For 3rd brightness setting; touch the switch "three-times".
5. To turn light "OFF"; touch the switch "four-times".

**PLEASE NOTE:** This light will function while the USB-C charging cable is plugged into a power source OR on its own internal battery. When using on battery power and the light starts to dim, this indicates that the internal battery needs to be recharged.

## ASSEMBLY FOR DESK LIGHT USE

1. Unpack all parts and screw the pole (E) into the base (F).
2. The light assembly has a magnet in the base (G) that attaches to the metal ball (H) at the top of the pole (E).
3. Adjust the light angle to the desired position for use.

## FOR CLIP-ON LIGHT USE

1. Squeeze the clip (K) and attach to a suitable support such as a desk or shelf.
2. Attach the light magnet (G) to the metal ball (L) on the clip.
3. Adjust light angle to desired position for use.

## SAFETY WARNING:

TO REDUCE THE RISK OF FIRE, ELECTRIC SHOCK, OR INJURY TO PERSONS

1. Turn lamp off and WAIT UNTIL LAMP HEAD IS COOL before handling.
2. The LED panel (M) might get hot after several hours of continuous use DO NOT place your hands directly on LED light panel.
3. The lamp head included with this unit cannot be replaced by the consumer.
4. INDOOR USE ONLY.

**NOTE:** The important safety instructions appearing in this instruction sheet are not meant to cover all possible conditions and situations that may occur. It must be understood that common sense, caution, and care must be used with any electrical product.

**CAUTION!** THE LIGHT SOURCE OF THIS LUMINAIRE IS NOT REPLACEABLE; WHEN THE LIGHT SOURCE REACHES ITS END OF LIFE THE WHOLE LUMINAIRE SHALL BE REPLACED.

**CAUTION:** Any change or modification to product not expressly recognized by OttLite voids OttLite's responsibility for proper function of product.

## FCC PART 15

**Note:** This equipment has been tested and found to comply with the limits for a Class B digital device, pursuant to Part 15 of the FCC rules. These limits are designed to provide reasonable protection against harmful interference in a residential installation. This equipment generates, uses and can radiate radio frequency energy and, if not installed and used in accordance with the instructions, may cause harmful interference to radio communications.

However, there is no guarantee that the interference will not occur in a particular installation. If this equipment does cause harmful interference to radio or television reception, which can be determined by turning the equipment off and on, the user is encouraged to try to correct the interference by one or more of the following measures:

- Reorient or relocate the receiving antenna.
- Increase the separation between the equipment and receiver.
- Connect the equipment into an outlet on a circuit different from that to which the receiver is connected.
- Consult the dealer or an experienced radio/TV technician for help.

Changes or modifications not expressly approved by the party responsible for compliance could void the user's authority to operate the equipment.

This device complies with Part 15 of the FCC Rules. Operation is subject to the following two conditions:

- (1) this device may not cause harmful interference, and
- (2) this device must accept any interference received, including interference that may cause undesired operation.

**CAN ICES-005 (B)/NMB-005 (B)**

## SPECIFICATIONS

USB: 5V, 1A / Input power: 5V, 1A

Battery: Lithium, 3.7V / 1200mAh (power for LED Light)

## ACCESSORIES

USB-C charging cable

ENGLISH Switch 3-in-1 Rechargeable Task Lamp

Li-ion Battery – Capacity: 1200mAh. Output Voltage: 3.7V

NOTICE: Never disassemble by yourself. Use the authorized charger only.

Exposure of battery to open flames could cause explosion.

Do not expose the battery pack out of the temperature range 32°F to

**113°F (0°C~45°C)**

**MADE IN CHINA**



## FAQ

**Q: What should I do if the light does not turn on?**

A: Make sure the light is fully charged. If using battery power, recharge if the light starts to dim.

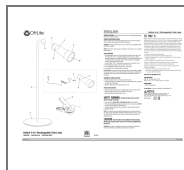
**Q: Can I replace the lamp head myself?**

A: No, the lamp head included with this unit cannot be replaced by the consumer.

**Q: How do I register my product for warranty?**

A: Complete the Product Registration Form enclosed with your product or register online at [OttLite.com/warranty](http://OttLite.com/warranty).

## Documents / Resources



[OttLite CSR0700C Series Switch 3 in 1 Rechargeable Task Lamp](#) [pdf] User Manual  
CSR0700C, CSR07G5W-CA, CSR07G5W-SHPR, CSR0700C Series Switch 3 in 1  
Rechargeable Task Lamp, CSR0700C Series, Switch 3 in 1 Rechargeable Task Lamp, 3 in 1 Re  
chargeable Task Lamp, Rechargeable Task Lamp, Task Lamp, Lamp

## References

- [🌞 Warranty](#)
- [User Manual](#)

[Manuals+](#), [Privacy Policy](#)

This website is an independent publication and is neither affiliated with nor endorsed by any of the trademark owners. The "Bluetooth®" word mark and logos are registered trademarks owned by Bluetooth SIG, Inc. The "Wi-Fi®" word mark and logos are registered trademarks owned by the Wi-Fi Alliance. Any use of these marks on this website does not imply any affiliation with or endorsement.