



CSDQA Series
Entice LED Desk
Lamp with
Wireless
Charging



OttLite CSDQA Series Entice LED Desk Lamp with Wireless Charging Instruction Manual

[Home](#) » [OttLite](#) » OttLite CSDQA Series Entice LED Desk Lamp with Wireless Charging Instruction Manual 

Contents

- [1 OttLite CSDQA Series Entice LED Desk Lamp with Wireless Charging](#)
- [2 PRODUCT REGISTRATION FORM](#)
- [3 TOUCH KEY PANEL INSTRUCTIONS](#)
- [4 WIRELESS CHARGING INSTRUCTIONS](#)
- [5 FCC PART 15](#)
- [6 IC CANADA](#)
- [7 Documents / Resources](#)
 - [7.1 References](#)
- [8 Related Posts](#)

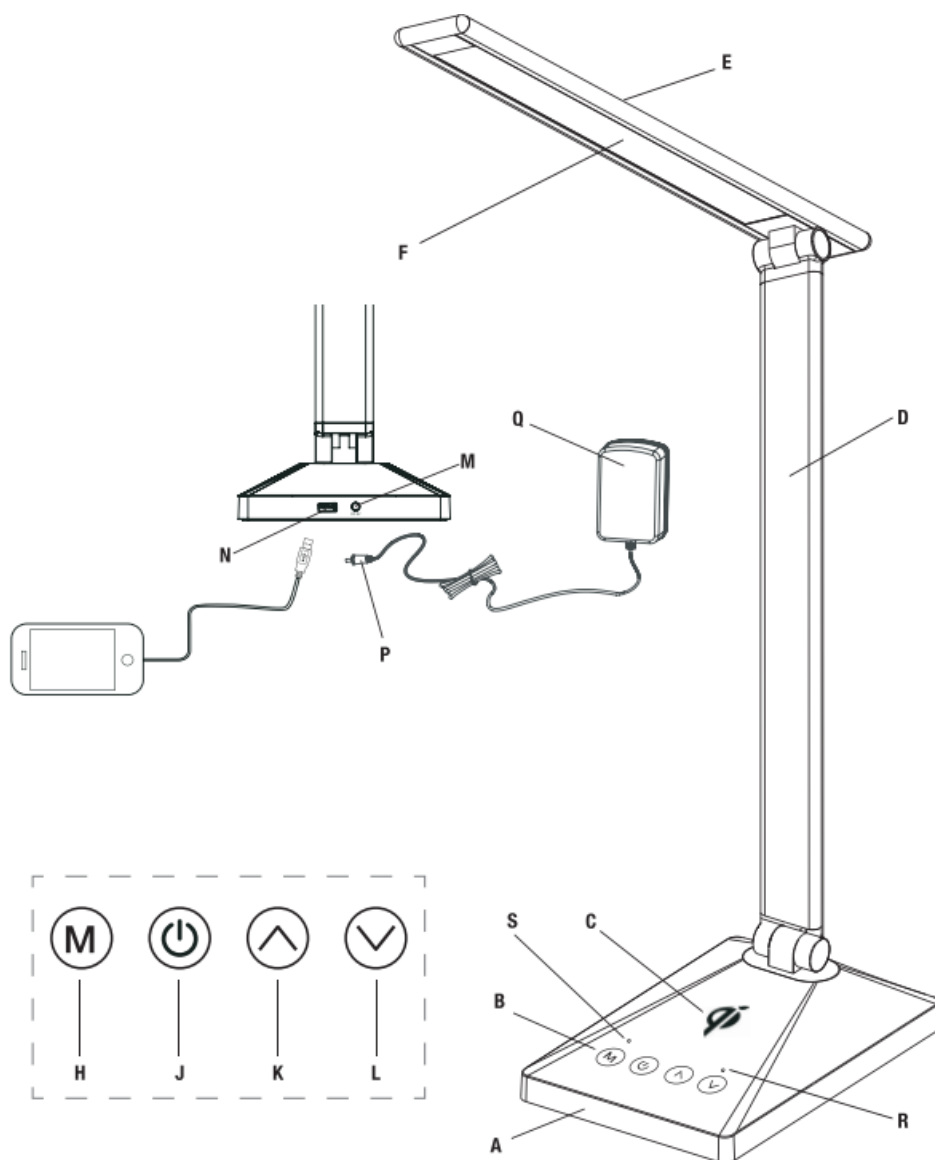


OttLite CSDQA Series Entice LED Desk Lamp with Wireless Charging



CONGRATULATIONS! You've purchased the finest in natural lighting technology with your new Ottlite® product.

PRODUCT REGISTRATION FORM



Please complete the enclosed Product Registration Form and return it today by mail, or register online by going to: [Ottlite.com/warranty](https://www.Ottlite.com/warranty)

WARNING: To prevent electric shock, make sure the lamp is not plugged in until all steps are complete.

NOTE: THIS UNIT IS FUUY ASSEMBLED

1. Remove the lamp from the packing, placing the lamp body base (A) flat on a steady surface.
2. Connect power adapter input (P) to connector (M) in the rear-bottom of the lamp.
3. Plug the power adapter (Q) into a standard household 120V AC outlet. Note: Only use the supplied power adapter to avoid damage or fire.
4. Turn the lamp ON/OFF by using a power switch (J) located on top of the base (A).
5. Touch panel (B) includes multiple “touch” keys that control the lamp’s light color mode and dimmer functions within each color mode. See the Touch Key Panel Instructions section for operating instructions.
6. Wireless charger for Qi-certified devices (C) is located in the center of base (A). See the Wireless Charging Instructions section for details.
7. To reposition the light, hold base (A) steady and grasp either lamp body (D) or shade (E) depending on the needed adjustment.

TOUCH KEY PANEL INSTRUCTIONS

To power the lamp and operate LED settings, slightly touch the required “key” to achieve the following:

- Turn lamp “ON/OFF”: touch the “POWER” key (J) as needed.
- To adjust brightness: touch the “UP” key (K) or the “DOWN” key (L) as needed.
- To adjust the lighting color mode: touch the “M” key (H) to switch light color mode; 2700K (warm white), 3500K (bright white), 5000K (ClearSun LED® natural daylight).

WIRELESS CHARGING INSTRUCTIONS

Wireless charging requires a Qi-certified device. To determine if your device is Qi-certified, please visit the Wireless Power Consortium website.

To wirelessly charge a device, perform the following:

- Check for a RED light (R) on top of base (A). This signifies a device can be charged.
- Place the device, which supports Qi wireless charging standard, face up on the middle of the Qi wireless charging icon (C).
- A different light (S) on top of the base (A) will turn BLUE noting charging mode is active.
- When the device is centered on the Qi wireless charging icon (C), a solid BLUE light will indicate the device is charging properly. NOTE: If a solid RED light is visible, this indicates the device is not charging and needs to be properly centered.
- Check the charge level on your device periodically to determine when the device is fully charged. NOTE: Lamp DOES NOT provide any indication of when a device is fully charged.

CAUTION! DEVICE MAY BECOME WARM DURING CHARGING. THIS IS NORMAL AND PART OF THE PROCESS. CHARGING TIMES VARY BY DEVICE.

SAFETY WARNING: TO REDUCE THE RISK OF FIRE, ELECTRIC SHOCK, OR INJURY TO PERSONS

1. Turn the lamp off and WAIT UNTIL LAMP HEAD (E) IS COOL before handling.
2. The LED panel (F) might get hot after several hours of continuous use DO NOT place your hands directly on the LED light panel.
3. Never use an extension cord unless the plug can be fully inserted into the receptacles in the extension cord.
4. Do not alter the plug.
5. The lamp head included in this unit cannot be replaced by the consumer.
6. INDOOR USE ONLY.

NOTE: The important safety instructions appearing in this instruction sheet are not meant to cover all possible conditions and situations that may occur. It must be understood that common sense, caution, and care must be used with any electrical product.

CAUTION! IF THE EXTERNAL FLEXIBLE CABLE OR CORD OF THIS LUMINAIRE IS DAMAGED, IT SHALL BE EXCLUSIVELY REPLACED BY THE MANUFACTURER OR ITS SERVICE AGENT OR A SIMILAR QUALIFIED PERSON IN ORDER TO AVOID A HAZARD. INDOOR USE ONLY.

CAUTION! THE LIGHT SOURCE OF THIS LUMINAIRE IS NOT REPLACEABLE; WHEN THE LIGHT SOURCE REACHES ITS END OF LIFE THE WHOLE LUMINAIRE SHALL BE REPLACED.

CAUTION: Any change or modification to a product not expressly recognized by Ottlite Technologies voids Ottlite's responsibility for the proper function of the product.

FCC PART 15

Note: This equipment has been tested and found to comply with the limits for a Class B digital device, pursuant to Part 15 of the FCC rules. These limits are designed to provide reasonable protection against harmful interference in a residential installation. This equipment generates, uses, and can radiate radio frequency energy and, if not installed and used in accordance with the instructions, may cause harmful interference to radio communications. However, there is no guarantee that the interference will not occur in a particular installation. If this equipment does cause harmful interference to radio or television reception, which can be determined by turning the equipment off and on, the user is encouraged to try to correct the interference by one or more of the following measures:

- Reorient or relocate the receiving antenna.
- Increase the separation between the equipment and the receiver.
- Connect the equipment into an outlet on a circuit different from that to which the receiver is connected.
- Consult the dealer or an experienced radio/TV technician for help.

Changes or modifications not expressly approved by the party responsible for compliance could void the user's authority to operate the equipment.

This device complies with Part 15 of the FCC Rules. Operation is subject to the following two conditions:

1. this device may not cause harmful interference, and
2. this device must accept any interference received, including interference that may cause undesired operation.

FCC/IC RF RADIATION EXPOSURE STATEMENT CAUTION:

To maintain compliance with the FCC's RF exposure guidelines, place the product at least 20cm from nearby persons.

To maintain compliance with the IC RF exposure guidelines, place the product at least 1 Dem from nearby persons.

IC CANADA

This device contains a license-exempt transmitter(s)/receiver that complies with Innovation, Science and Economic Development Canada's license-exempt RSS(s). Operation is subject to the following two conditions:

1. This device may not cause interference.
2. This device must accept any interference, including interference that may cause undesired operation of the device.

CAN RSS-216/CNR-216

CAN ICES-005 (B)/NMB-005 (B)

POWER ADAPTER SPECIFICATION:

Input: AC 100-240V, 50/60 Hz, 0.8A

Output: 12V DC, 2A with a Male DC Plug

Qi CHARGER SPECIFICATION:

Output: 5V, 1A or 5 watts

THIS LAMP CONTAINS a 5V, 2,1A USB output port (N) located on the bottom rear of the lamp. USB ports can charge items such as tablets, cellular phones, etc.

The “Qi” symbol is a trademark of the Wireless Power Consortium

Entice LED Desk Lamp with Wireless Charging

CSDQA02W CSDQA02C CSDQA02W-SHPR CSDQA21W-SHPR CSDQA80W-SHPR

Documents / Resources

	<p>OttLite CSDQA Series Entice LED Desk Lamp with Wireless Charging [pdf] Instruction Manual</p> <p>1-HZ-X16C, 2AI7B-1-HZ-X16C, 2AI7B1HZX16C, CSDQA Series Entice LED Desk Lamp with Wireless Charging, CSDQA Series, Entice LED Desk Lamp with Wireless Charging, LED Desk Lamp with Wireless Charging, Desk Lamp with Wireless Charging, Lamp with Wireless Charging, Wireless Charging, Charging, Lamp</p>
---	---

References

- [User Manual](#)

[Manuals+](#), [Privacy Policy](#)

This website is an independent publication and is neither affiliated with nor endorsed by any of the trademark owners. The "Bluetooth®" word mark and logos are registered trademarks owned by Bluetooth SIG, Inc. The "Wi-Fi®" word mark and logos are registered trademarks owned by the Wi-Fi Alliance. Any use of these marks on this website does not imply any affiliation with or endorsement.