



OtterBox Galaxy S23 ALPHA FLEX Screen Protector Instruction Manual

[Home](#) » [OtterBox](#) » OtterBox Galaxy S23 ALPHA FLEX Screen Protector Instruction Manual 

Contents

- [1 OtterBox Galaxy S23 ALPHA FLEX Screen Protector](#)
- [2 Product Information](#)
 - [2.1 Specifications](#)
- [3 Product Usage Instructions](#)
- [4 Screen Protection Universal Alignment Tool Install Steps](#)
- [5 Documents / Resources](#)
 - [5.1 References](#)
- [6 Related Posts](#)

OTTERBOX

OtterBox Galaxy S23 ALPHA FLEX Screen Protector



Product Information

The product is a screen protector for mobile phones. It is designed to protect the phone's screen from scratches, fingerprints, and other damage. The screen protector is made of high-quality materials that are transparent and do not affect the clarity of the phone's display. It is easy to install and provides a smooth and responsive touch experience.

Specifications

- **Material:** High-quality transparent film
- **Compatibility:** Designed for mobile phones
- **Dimensions:** Customized to fit different phone models
- **Installation Method:** Tray-based installation

Product Usage Instructions

- **Step 1: Lift and Clean**
 1. Lift the screen protector from the tray.
 2. If the screen protector is disconnected from the tray, reinstall it into the bottom slot.
 3. Clean the phone's screen using the provided cleaning kit.
- **Step 2: Slide and Insert**

Slide the tray down using the phone and insert the phone into the tray.
- **Step 3: Secure and Position**
 - Secure the screen protector tab to the top peg.
 - Firmly press and swipe down from top to bottom with the provided squeegee, not your fingers.
- **Step 5: Release and Remove Liner**

Release the tab from the peg and carefully pull the liner from the glass.

- **Step 6: Smooth and Eliminate Bubbles**

Press out any bubbles towards the edges of the screen using the squeegee. Ensure a smooth and bubble-free installation.

FAQ (Frequently Asked Questions)

- **Q: Can I reuse the screen protector?**

A: No, the screen protector is designed for one-time use only. Once it is removed, it cannot be reinstalled.

- **Q: Will the screen protector affect the touch sensitivity of my phone?**

A: No, the screen protector is designed to be highly responsive and does not affect the touch sensitivity of your phone.

- **Q: Can I remove the screen protector without leaving any residue?**

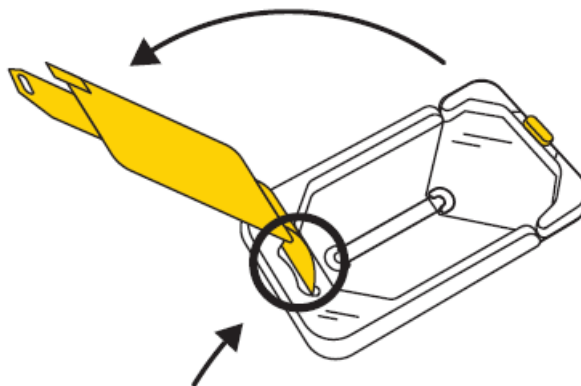
A: Yes, the screen protector is designed to be easily removable without leaving any residue on the phone's screen.

Screen Protection Universal Alignment Tool Install Steps

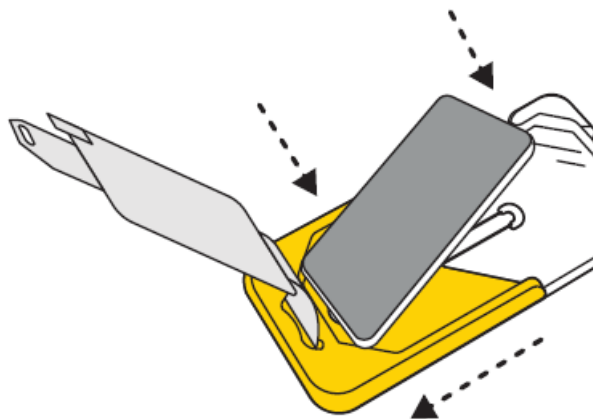
Remove the case and existing screen protector (if applicable) from the phone and set aside a cleaning kit.

1. Lift

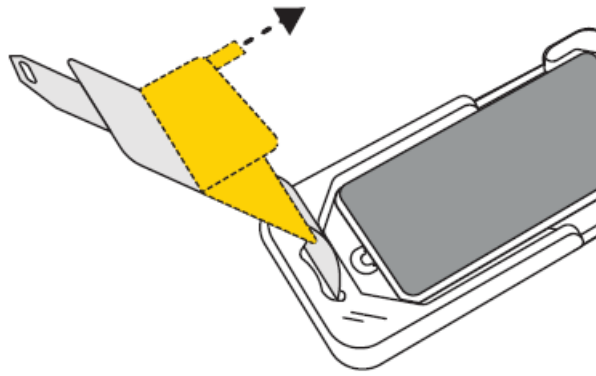
If the screen protector is disconnected from the tray, reinstall it into the bottom slot.



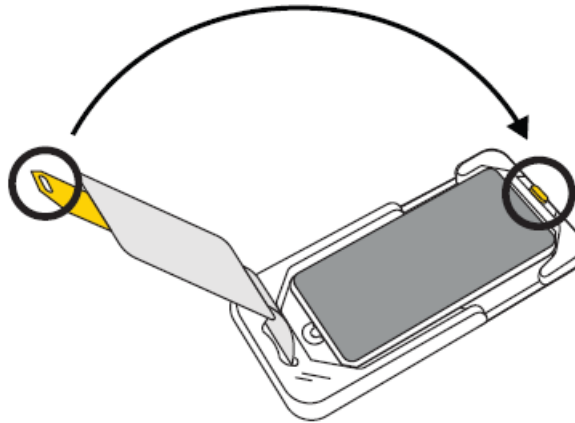
2. Slide the tray down using the phone, insert the phone in the tray, and clean the phone (see cleaning kit).



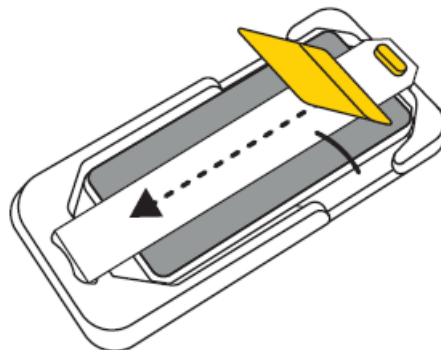
3. Remove the film with tab ①.



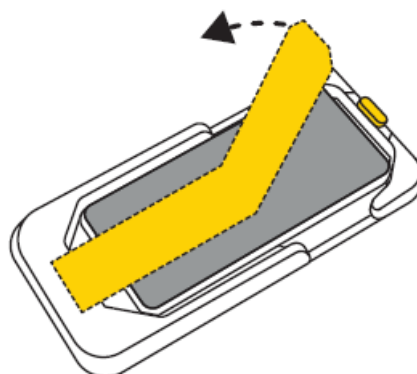
4. Secure the screen protector tab to the top peg.



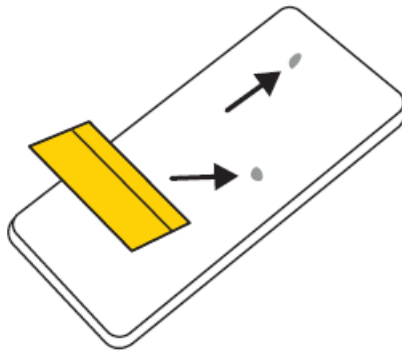
5. Firmly press and swipe down from top to bottom with a squeegee, not your fingers.



6. Release the tab from the peg, and pull the liner from the glass.



7. Press out bubbles to display edges with a squeegee.



Documents / Resources



[OtterBox Galaxy S23 ALPHA FLEX Screen Protector](#) [pdf] Instruction Manual
Galaxy S23 ALPHA FLEX Screen Protector, Galaxy S23, ALPHA FLEX Screen Protector,
FLEX Screen Protector, Screen Protector, Protector

References

- [User Manual](#)