



OTON KB12 vMax Keyboard MIDI Control with USB Control User Manual

[Home](#) » [OTON](#) » OTON KB12 vMax Keyboard MIDI Control with USB Control User Manual 

OTON[®]

User Manual
vMixKeyboard Controller



Contents

- [1 Introduction](#)
- [2 Warnings and Precautions](#)
- [3 Warranty Terms](#)
- [4 Standard Warranty](#)
 - [4.1 What Is Not Covered](#)
 - [4.2 Register for a 2-year Warranty](#)
- [5 Overview](#)
- [6 Key Features](#)
- [7 Tech Specs](#)
- [8 Instant Shortcut Configuration](#)
 - [8.1 Enabling MIDI Controller](#)
- [9 Add Shortcuts](#)
 - [9.1 Import Preset Shortcuts](#)
- [10 Configure Button Indicator](#)
- [11 Documents / Resources](#)
 - [11.1 References](#)
- [12 Related Posts](#)

Introduction

Thank you very much for using our portable broadcast platform products! please read the manual carefully before using this product.

This manual describes in detail the functions, installation, and operation of the portable broadcast station's general principles or methods.

This series of portable broadcast stations is a high-performance, multi-function product of live broadcast switching stations.

This manual is applicable to portable broadcast station series products.

Warnings and Precautions

1. Read all of these warnings and save them for later reference.
2. Follow all warnings and instructions marked on this unit.
3. Unplug this unit from the wall outlet before cleaning. Do not use liquid or aerosol cleaners. Use a damp cloth for cleaning.
4. Do not use this unit in or near water.
5. Do not place this unit on an unstable cart, stand, or table. The unit may fall, causing serious damage.
6. Slots and openings on the cabinet top, back, and bottom are provided for ventilation. To ensure the safe and reliable operation of this unit, and to protect it from overheating, do not block or cover these openings. Do not place this unit on a bed, sofa, rug, or similar surface, as the ventilation openings on the bottom of the cabinet will be blocked. This unit should never be placed near or over a heat register or radiator. This unit should not be placed in a built-in installation unless proper ventilation is provided.
7. This product should only be operated from the type of power source indicated on the marking label of the AC adapter. If you are not sure of the type of power available, consult our local dealer or your local power company.
8. Do not allow anything to rest on the power cord. Do not locate this unit where the power cord will be walked on, rolled over, or otherwise stressed.
9. If an extension cord must be used with this unit, make sure that the total of the ampere ratings on the products

plugged into the extension cord does not exceed the extension cord rating.

10. Make sure that the total amperes of all the units that are plugged into a single wall outlet do not exceed 15 amperes.
11. Never push objects of any kind into this unit through the cabinet ventilation slots, as they may touch dangerous voltage points or short-out parts that could result in a risk of fire or electric shock. Never spill liquid of any kind onto or into this unit.
12. Except as specifically explained elsewhere in this manual, do not attempt to service this product yourself. Opening or removing covers that are marked "Do Not Remove" may expose you to dangerous voltage points or other risks, and will void your warranty. Refer all service issues to qualified service personnel.
13. Unplug this product from the wall outlet and refer to qualified service personnel under the following conditions:
 - a. When the power cord is damaged or frayed;
 - b. When the liquid has spilled into the unit;
 - c. When the product has been exposed to rain or water;
 - d. When the product does not operate normally under normal operating conditions. Adjust only those controls that are covered by the operating instructions in this manual; improper adjustment of other controls may result in damage to the unit and may often require extensive work by a qualified technician to restore the unit to normal operation;
 - e. When the product has been dropped or the cabinet has been damaged;
 - f. When the product exhibits a distinct change in performance, indicating a need for service.

Warranty Terms

For products purchased through resellers and distributors, please refer to the return policy of the merchant from whom it was initially purchased; any products eligible for return or replacement through the original merchant should be submitted through them. We will only accept direct return of a product for replacement, under the stated warranty service after the original return time frame of the place of purchase has expired.

Standard Warranty

- Oton equipment is guaranteed against any manufacturing defects for one year for limited parts and labor from the date of purchase.
- Oton equipment is guaranteed against any manufacturing defects for one year for limited parts and labor from the date of purchase.
- The original purchase invoice or other documentary evidence should be supplied at the time of any request for repair under warranty.
- The product warranty period begins on the purchase date. If the purchase date is unknown, the product warranty period begins on the thirtieth day after shipment from the Oton office.
- Warranty is only valid in the country or region of purchase.
- Shipping expenses are at Oton for any delivery claim – you get a defective piece at box just opened.

What Is Not Covered

It is important to note that our warranty is not an unconditional guarantee for the duration of the Program. Any replaced parts become the property of the manufacturer. The Program does not apply to the software component of a product or a product that has been damaged due to accident, misuse, abuse, improper installation, usage not in accordance with product specifications and instructions, natural or personal disaster, unauthorized alterations, repairs or modifications.

The Program Does Not Cover Any Events Such As:

A. Any damages unrelated to manufacturing defects
B. Any unsuitable environment or use of the product, as determined by the manufacturer
C. Any product which has been modified without official permission from the manufacturer, or on which the serial number or warranty sticker has been defaced, modified, or removed
Damage, deterioration or malfunction resulting from:

- Accident, abuse, misuse, neglect, fire, water, lightning, or other acts of god, commercial or industrial use, unauthorized product modification or failure to follow instructions included with the product
- Third-party products using manufacturer components will not be covered by warranty.
- Any shipment damages (claims MUST be made with the carrier)
- Unauthorized repairs to the product will void the warranty

The manufacturer reserves the right to refuse to service any product which has been altered, modified or repaired by any non-authorized personnel

Register for a 2-year Warranty

Visit <https://otontechnology.com/warranty/> or scan below QR code to register a 2-year warranty for your Oton switcher.



<https://otontechnology.com/warranty/>

Overview

Oton KB12 is a cost-effective video switcher for live streaming or small venue multimedia control. vMix has complete integration with the device allowing any key or control to be assigned to virtually any function and triggering our backlight LEDs to indicate active inputs, streaming, and recording status.



Key Features

- Anodized aluminum surface panel for various environment
- 12 channel switching for PVW and PGM
- Extensive transition effects
- Independent audio control for 5 channels(1 input + 4 outputs)
- A number of Shortcuts can be assigned to anything from Keyboard via USB cable
- Tally for camera status indication

Tech Specs

Connection	USB2.0 Cable
System Requirement	Windows 7 or higher and a DirectX 10 compatible graphics card
Tally	DB-25 pin (12 PVW+12 PGM+1GND)
Audio Dial Control	1 input + 4 outputs
Video Switching	Cut, auto &T-bar switching
LED Status Display	Supported
Power	12V 3A
POE	802.3AF (optional)
Product Dimension	35.5x17x5.5/7cm
Package Dimension	48.5x25x15cm
Product N.W./G.W.	1.5kg/2.3kg
Working Temperature	-20°C~40°C (-4°F – 104°F)
Storage Temperature	-20°C~40°C (-4°F – 104°F)
Working Humidity	0%-90% no condensing
Storage Humidity	0%-90% no condensing
Package Content	<ul style="list-style-type: none"> * Main Unit x1 * USB Cable x1 * Power Adapter x1 * User Manual x1 * Warranty Card x1

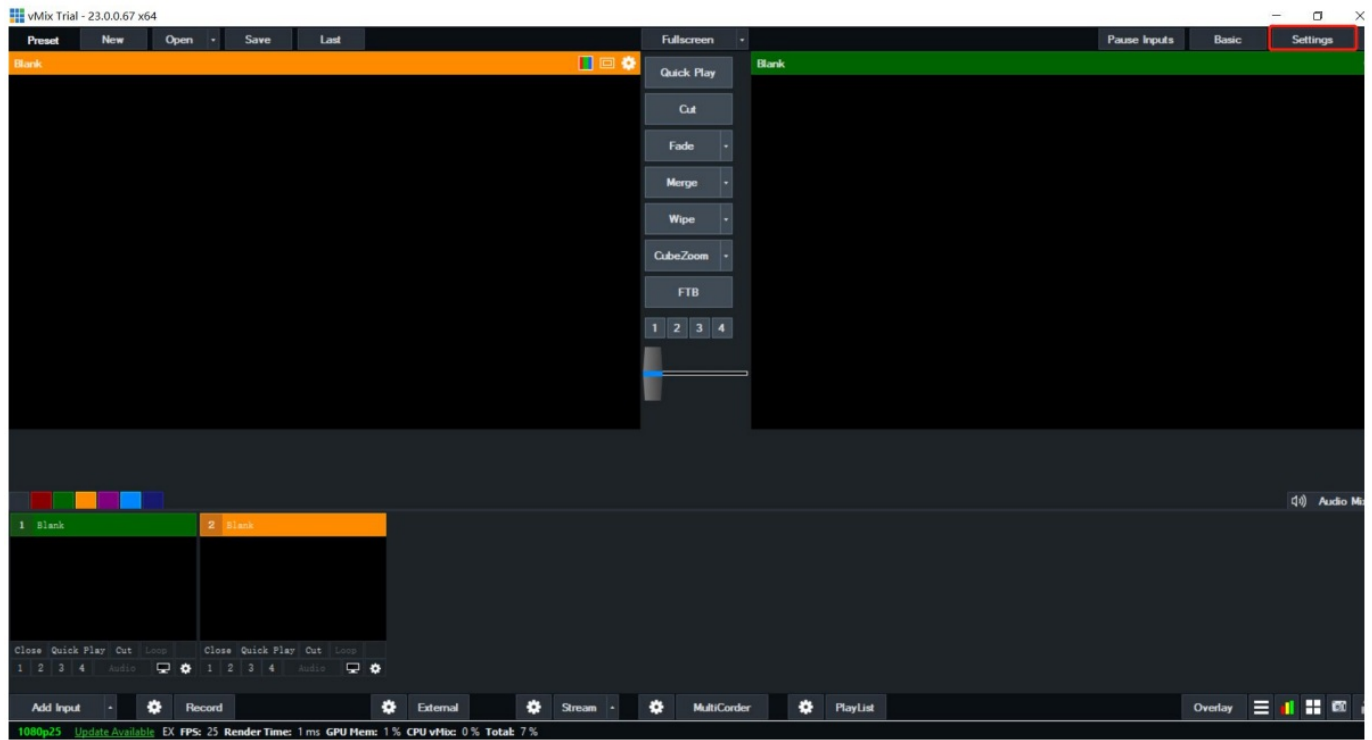
Instant Shortcut Configuration

vMix supports an unlimited number of Shortcuts that can be assigned to anything from Keyboard Keys to MIDI Faders. In other systems, you may know these as Macros. Grouping keys with related functions improves efficiency and allows the user to focus on creative elements instead of searching for tools or functions in the interface.

Enabling MIDI Controller

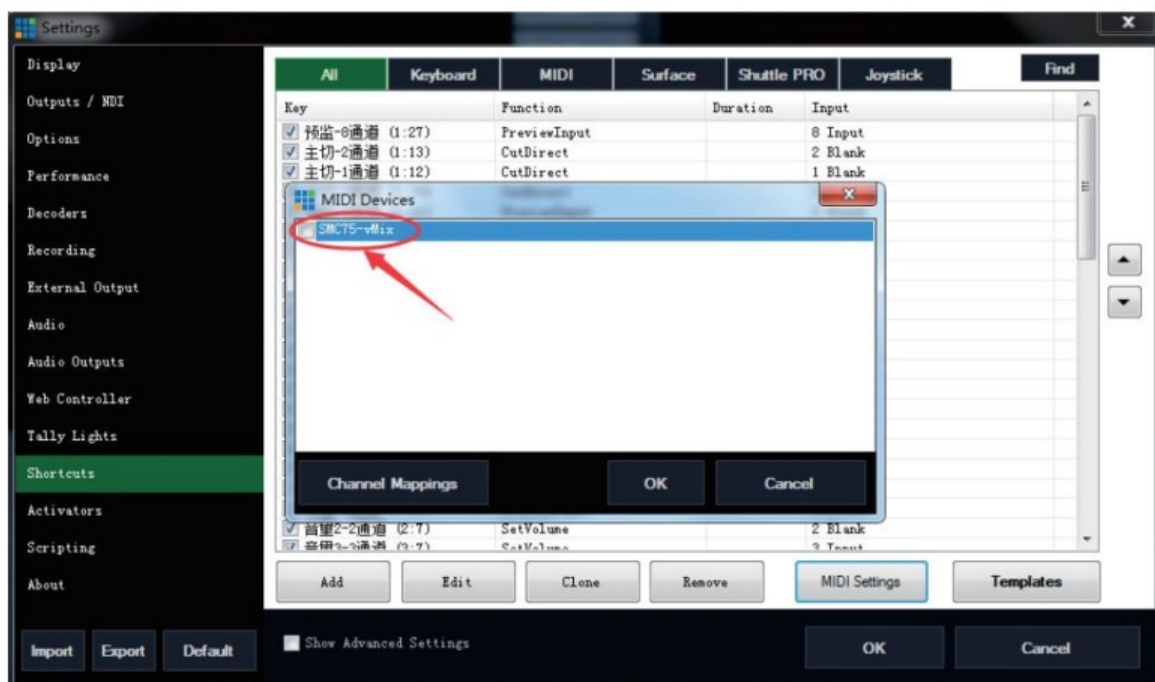
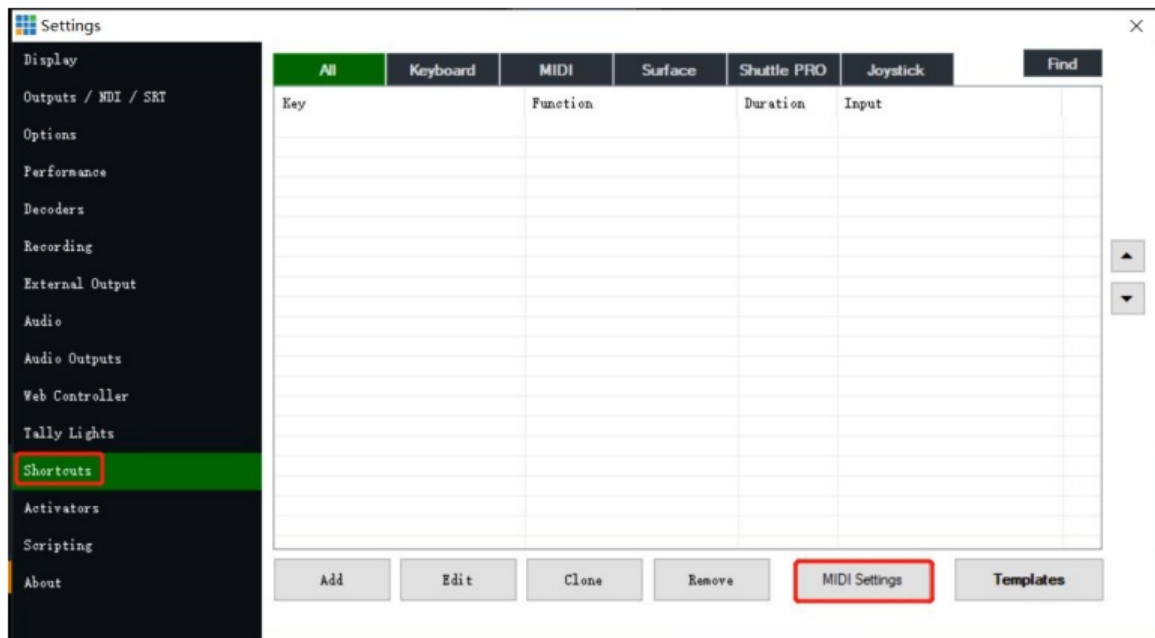
Step 1: Connect KB12 with your computer via USB2.0 cable

Step 2: Open vMix software and click [Settings] on the top-right hand corner.

**Note:**

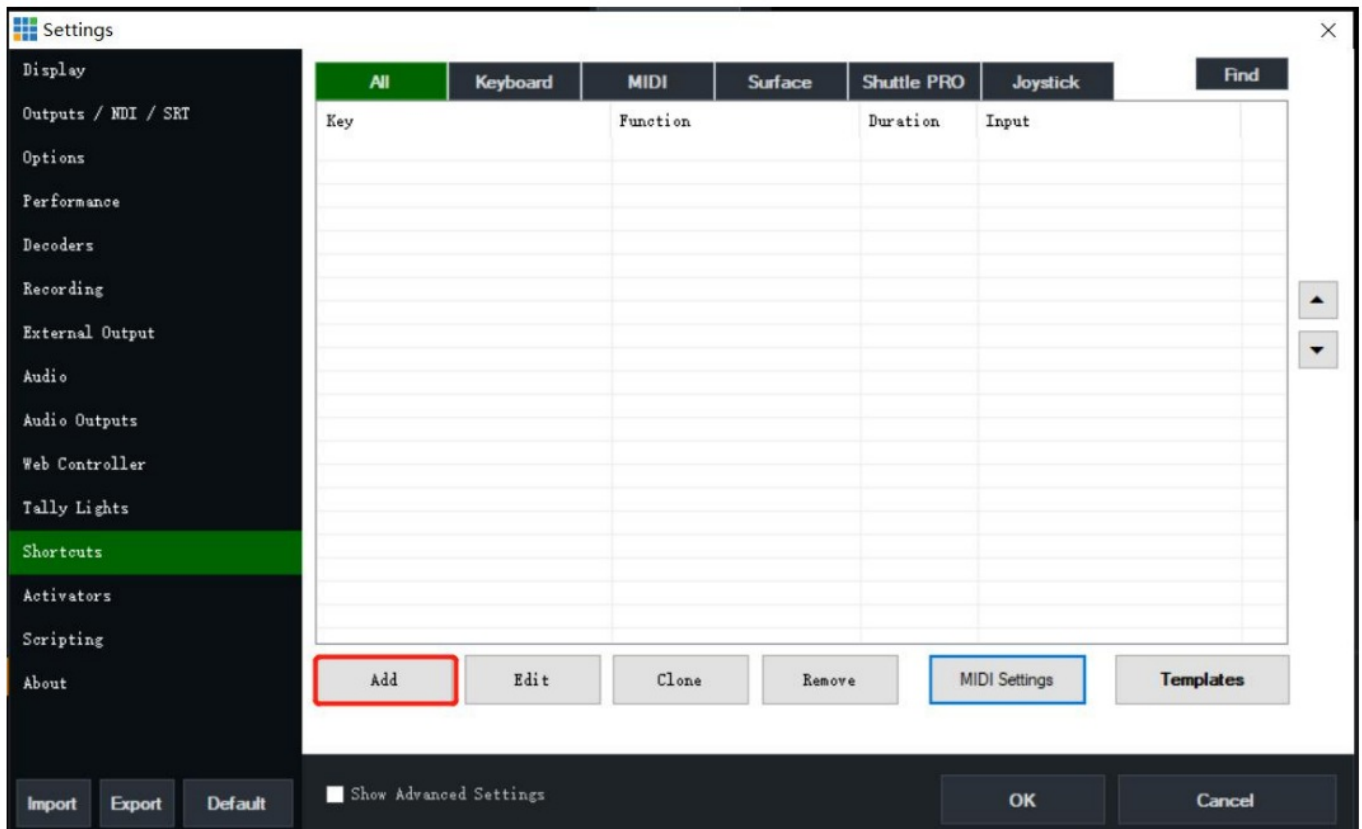
* User needs to register vMix software with vMix company. Oton doesn't supply the software, we only provide hardware keyboard controllers.

Step 3: Click [Shortcuts] on the side menu, then click [MIDI Settings], if you see [SMC75-vMix] shown in the list, then it means KB12 is connected successfully.

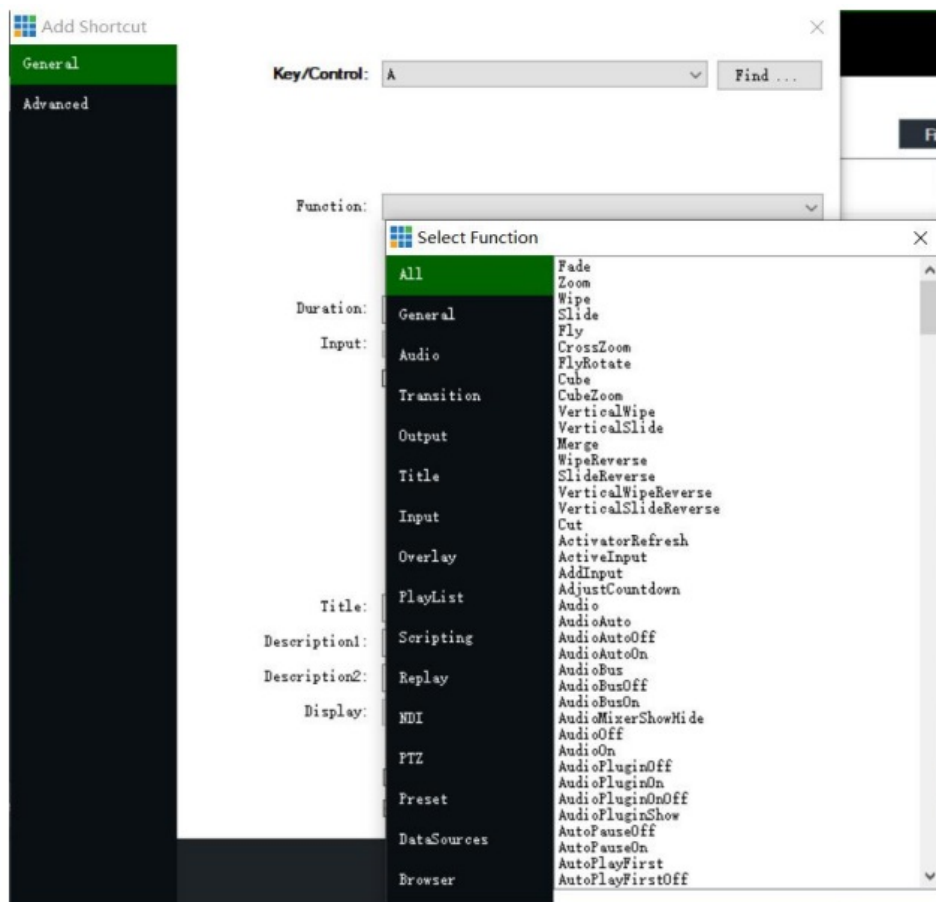


Add Shortcuts

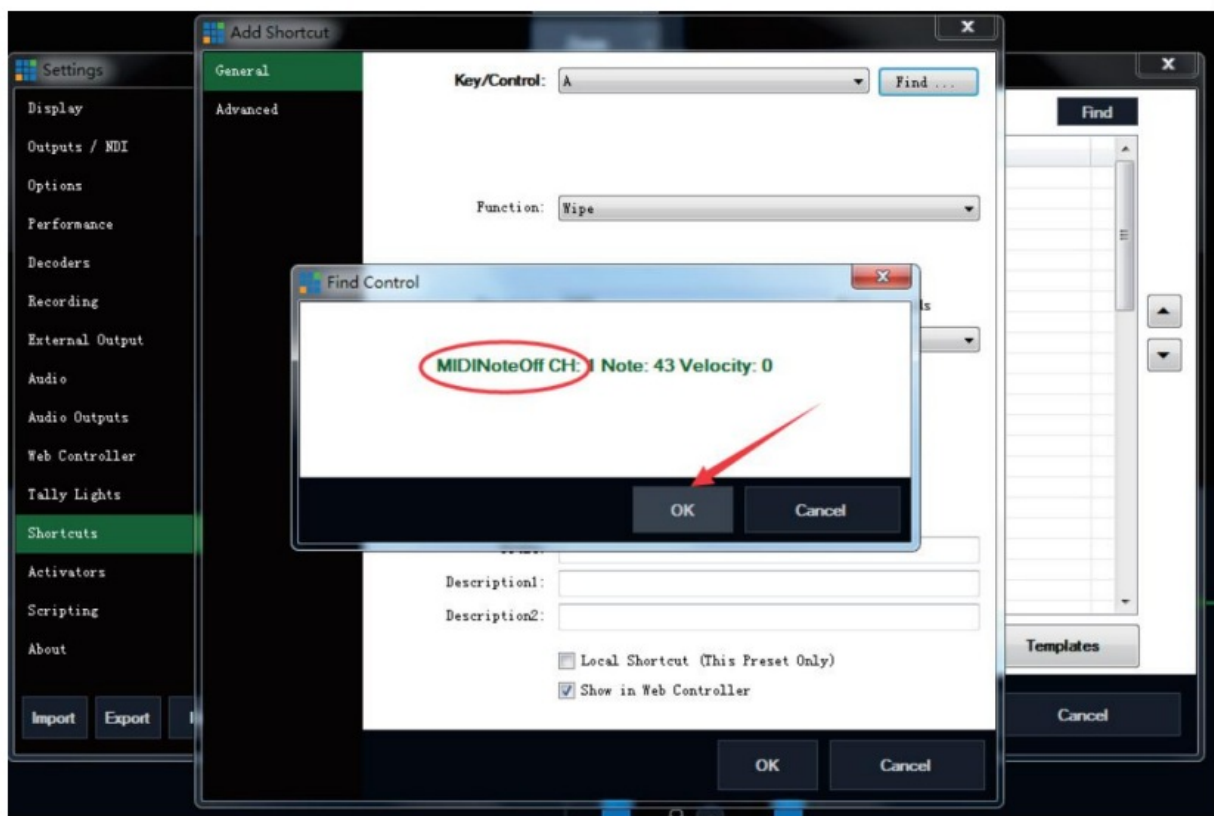
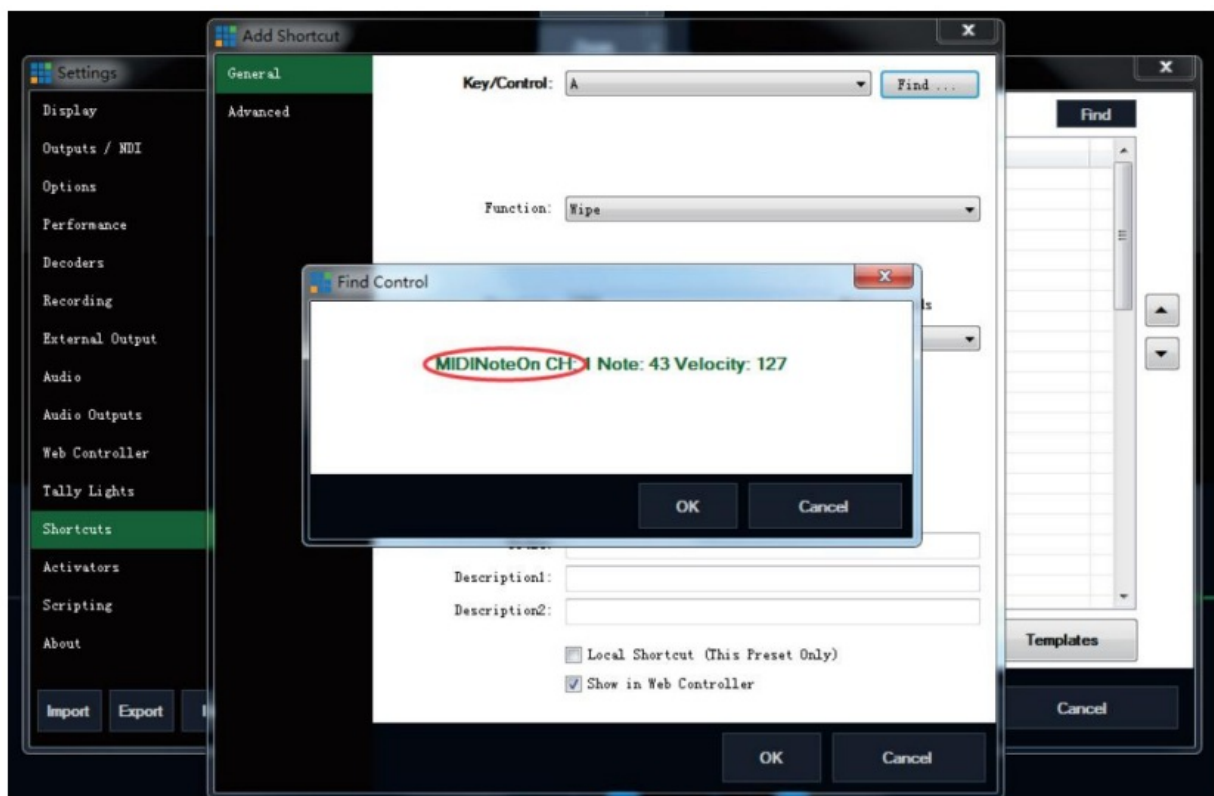
Step 1: Click [Shortcuts] on the side menu, then click [Add]



Step 2: Click the arrow next to the [Function] dropdown box and the Select Function window appear with a number of commands or macros to choose from, organized by category.



Step 3: Click [Find], a dialog box will popup, promoting: press 1 button on the controll panel, press the hold 1 button, the popup will then display : MIDI Note On CH...., if you release the button, it will show: MIDI Note Off CH..., at this time the button has been recognized by vMix software, click 'OK'

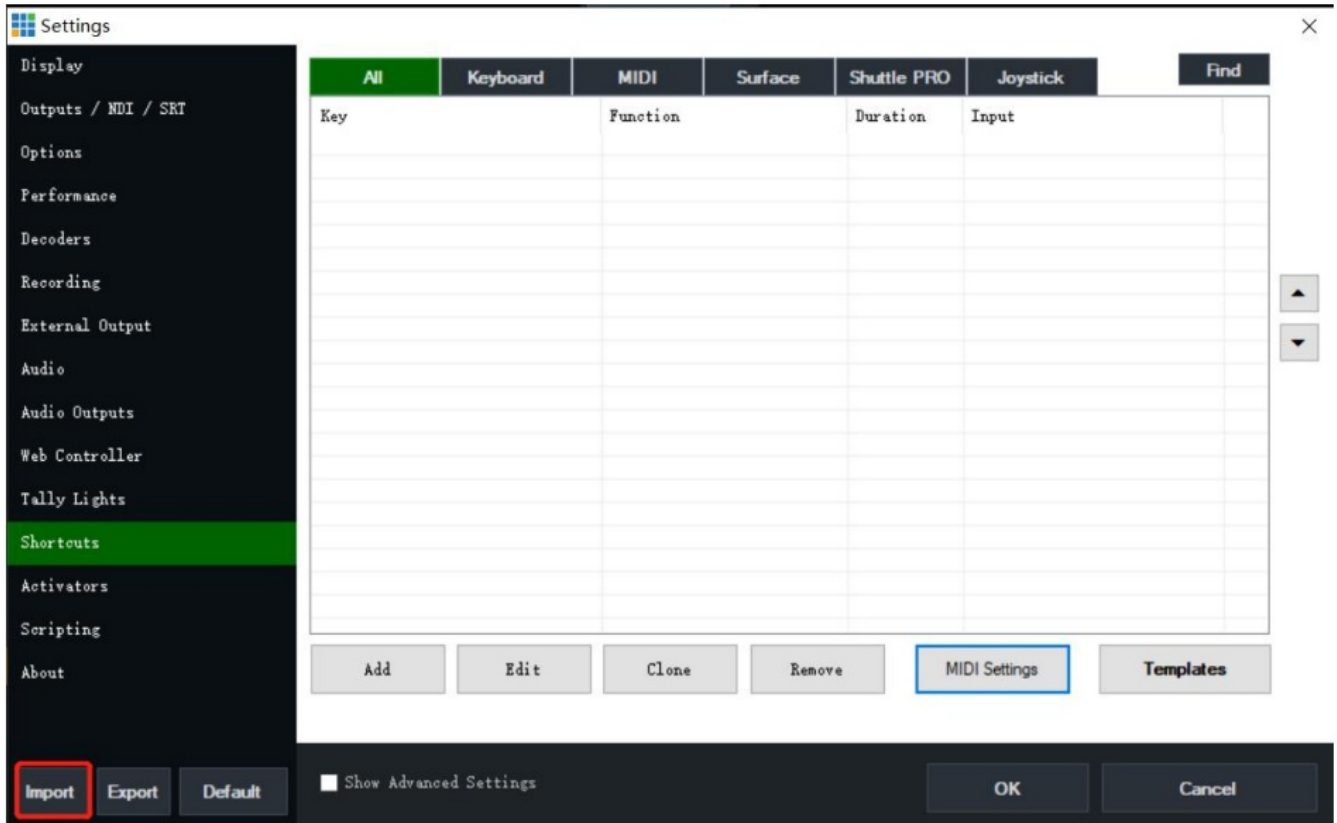


To quickly select the Key or Control you wish to assign this shortcut to, click the [Find] button and then press or move the control you wish to use.

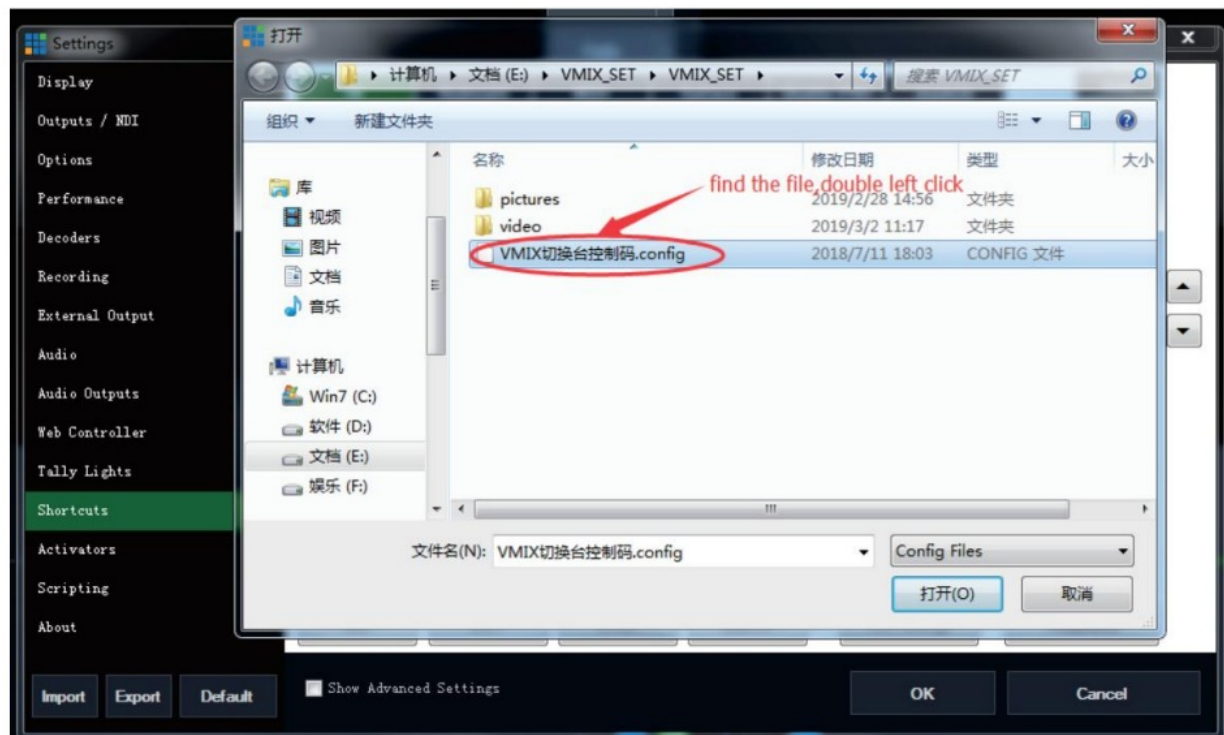
Import Preset Shortcuts

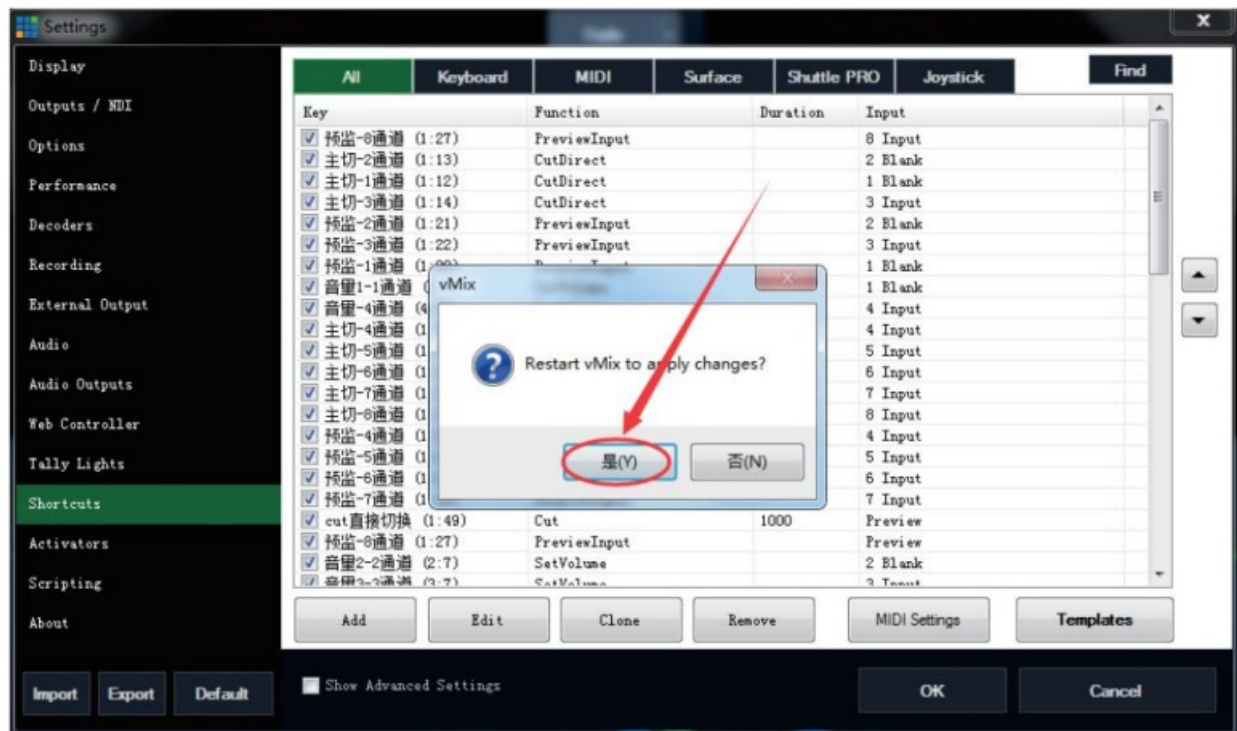
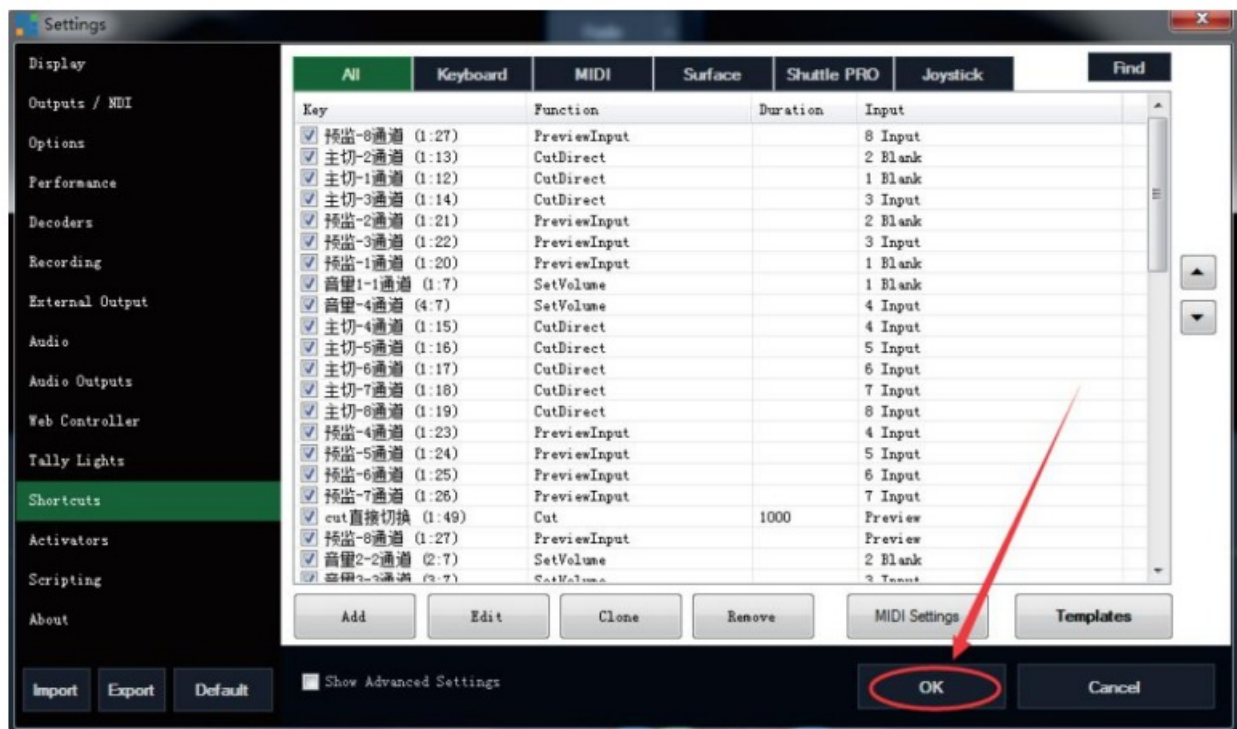
KB12 includes a list of pre-configured shortcuts so you can easily import them to improve efficiency.

Step 1: Click [Shortcuts] on the side menu, then click [Import] at the bottom left corner.



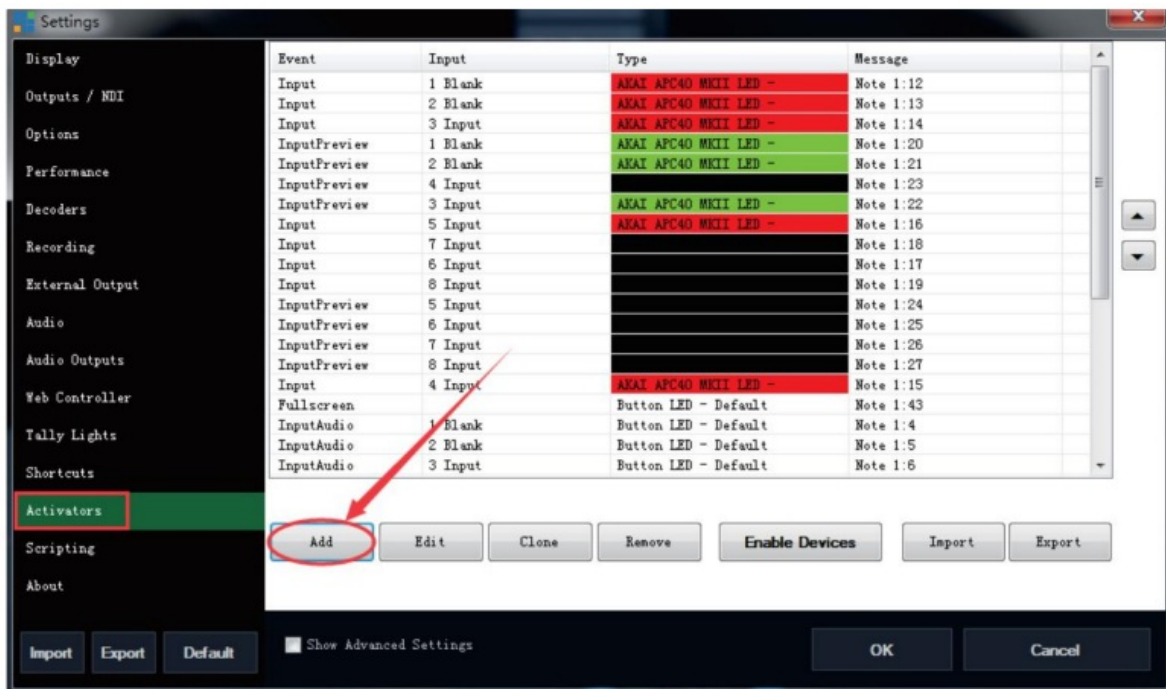
Step 2: Select the shortcuts .config documents, import it, and then click [OK]



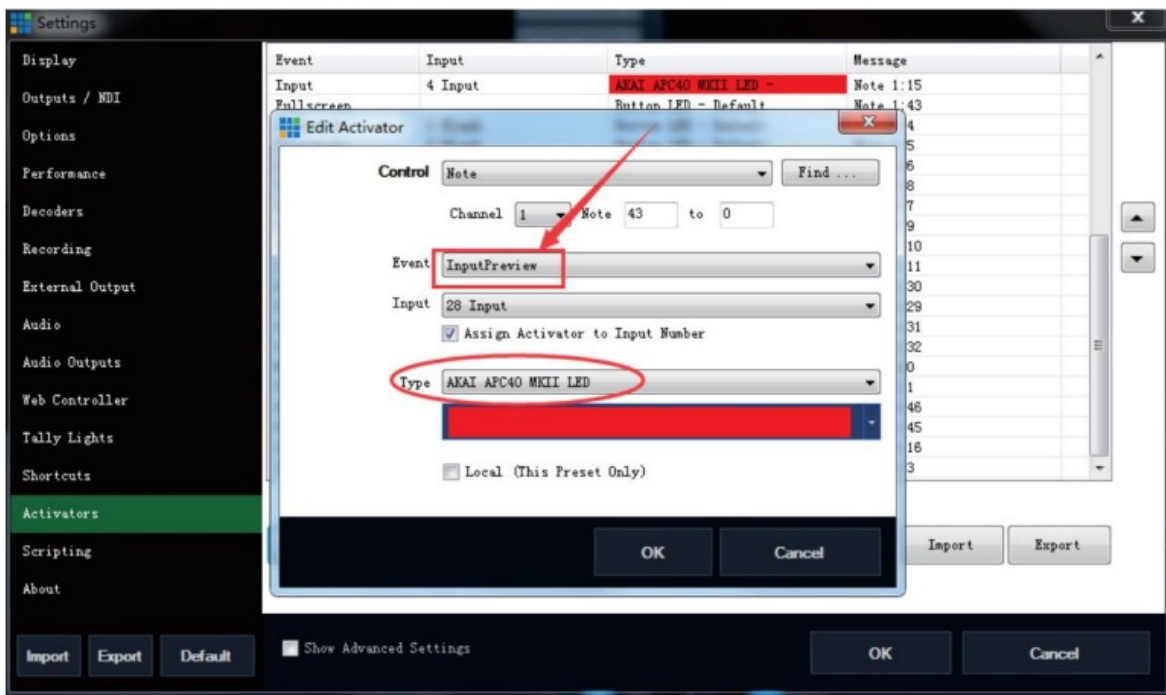


Configure Button Indicator

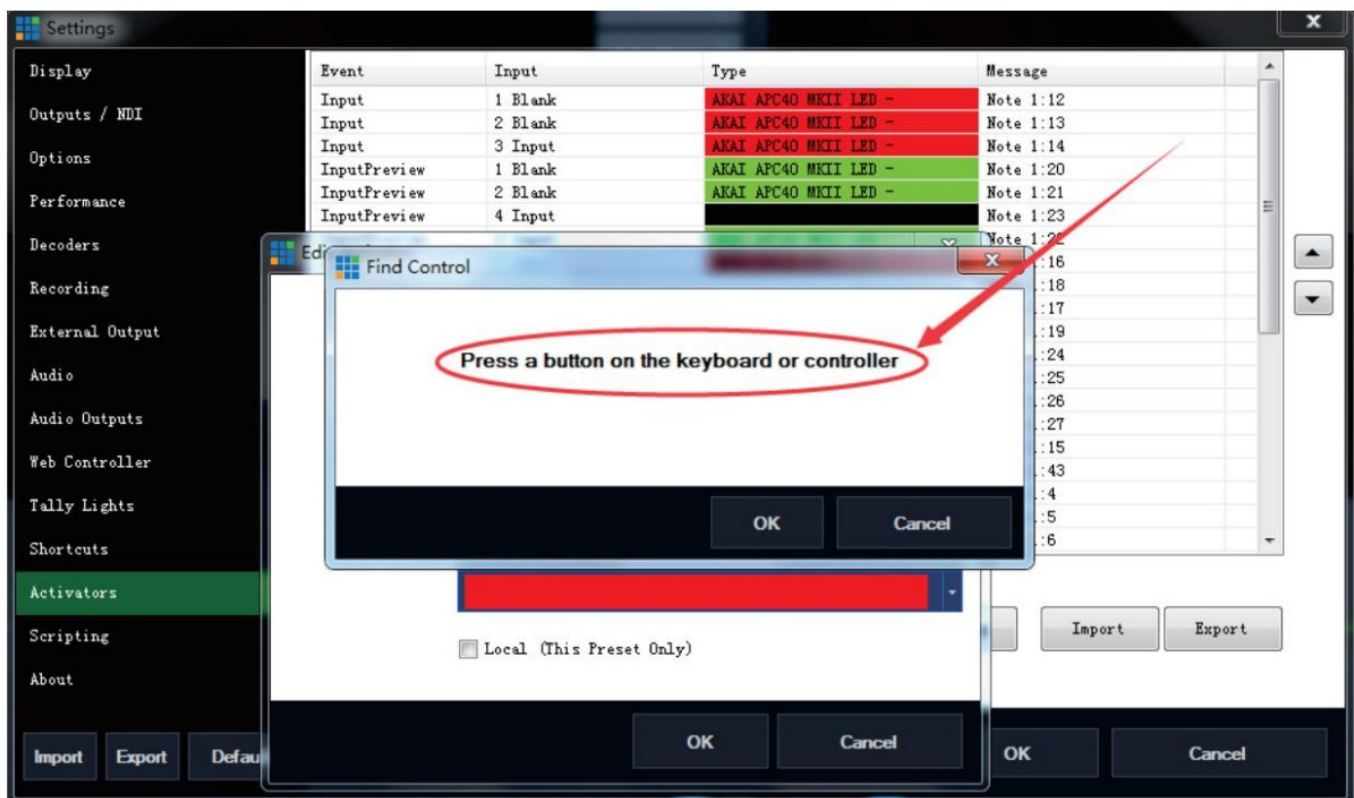
1. Open vMix software and click [Setting]
2. Click [Activators], then click [Add]



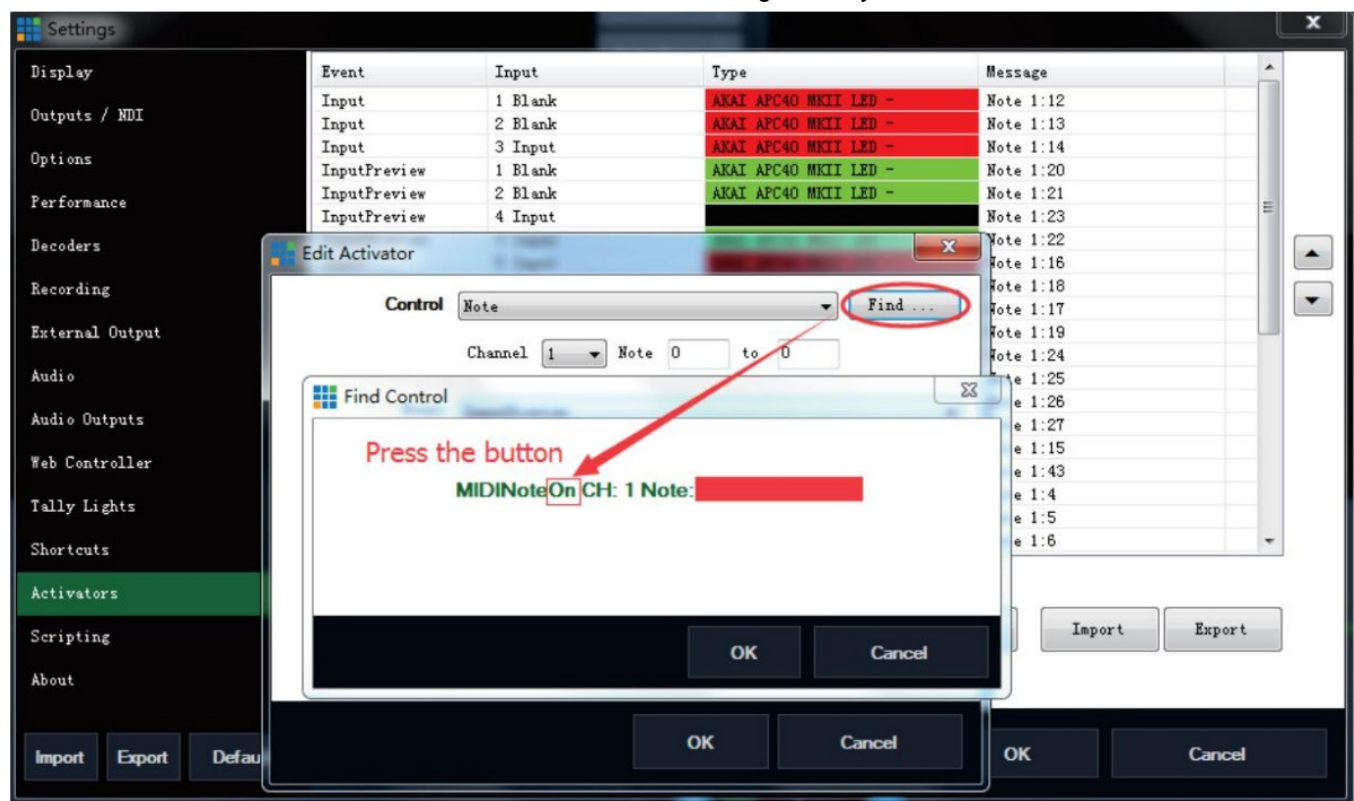
3. Click [Event], select event and Type in the drop-down menu.

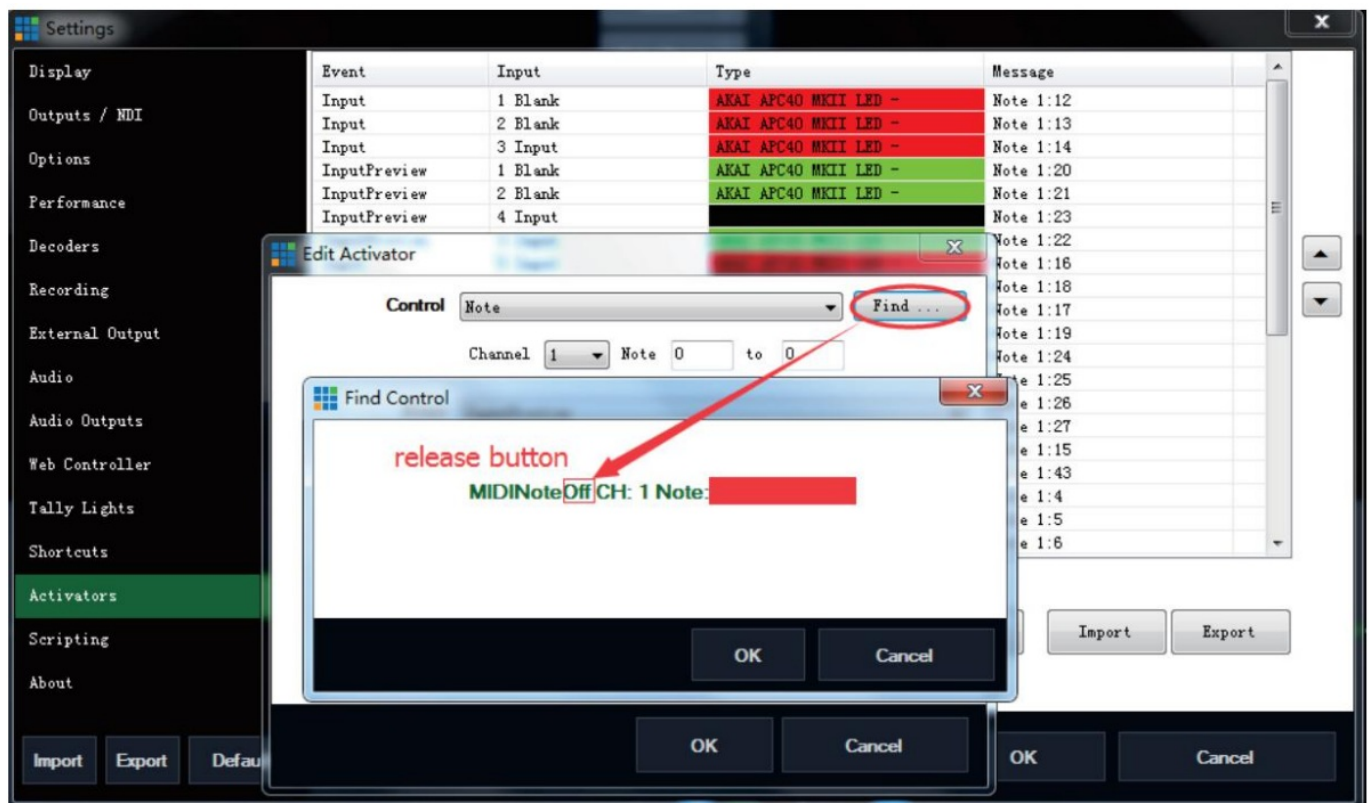


4. Click [Find], a dialog box will popup, prompting you to press the switcher button




5. press the hold the button, the popup will then display : MIDINoteOn CH...., if you release the button, it will show: MIDINoteOff CH..., at this time the button has been recognized by vMix software, click'OK'





Documents / Resources

	<p>OTON KB12 vMax Keyboard MIDI Control with USB Control [pdf] User Manual KB12 vMax Keyboard MIDI Control with USB Control, KB12, vMax Keyboard MIDI Control with USB Control</p>
---	---

References

- [Warranty - Oton Technology](#)

Manuals+.