



OTOFIX XP1 Pro Key Programmer User Guide

[Home](#) » [OTOFIX](#) » OTOFIX XP1 Pro Key Programmer User Guide 

Contents

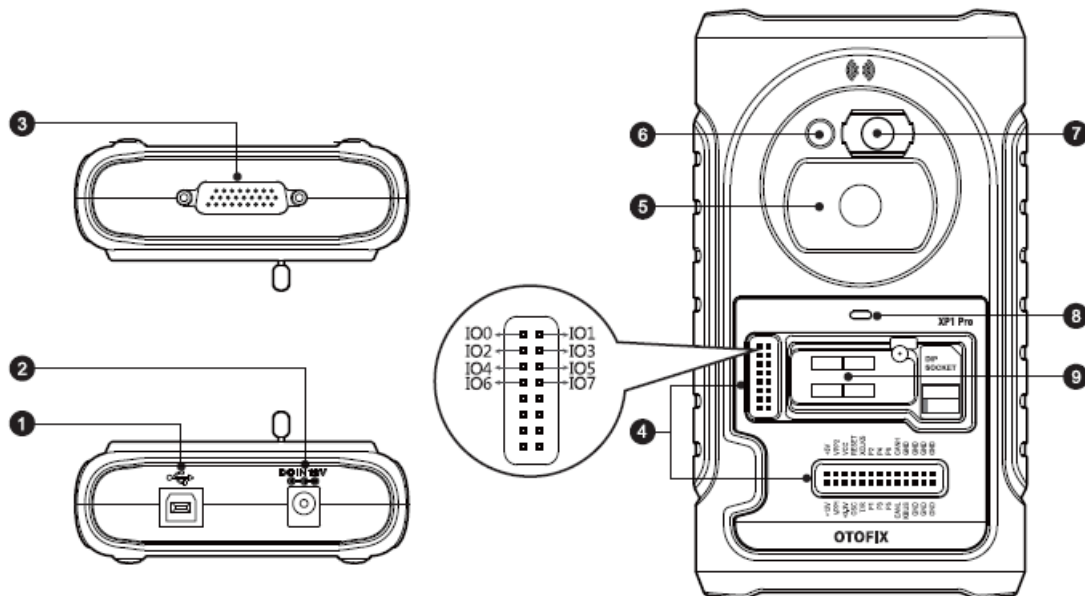
- [1 OTOFIX XP1 Pro Key Programmer](#)
- [2 OVERVIEW](#)
- [3 Documents / Resources](#)
- [4 Related Posts](#)

OTOFIX

OTOFIX XP1 Pro Key Programmer



OVERVIEW



1. USB Port – provides data communication and 5V DC power supply.
2. DC Port – provides 12V DC power supply.
3. DB 26-Pin Port – connects with the Mercedes Benz infrared collector, ECU cable, MCU cable and MC9S12 cable.
4. Cross Signal Pins – hold the MCU spare cable or DIY signal interface.
5. Vehicle Key Slot – holds the vehicle key.
6. Transponder Slot – holds the transponder.

7. Mercedes Infrared Key Slot- holds the Mercedes infrared key.
8. Status LED – indicates the current operating status.
9. EEPROM Component Slot – holds the EEPROM in-line chip or EEPROM socket

USB Port

The Type B USB port provides data communication and power supply for handheld devices, PC, and XP1 Pro.

DC Port

DC Port is used to provide 12V power supply for the XP1 Pro.

DB 26-Pin Port

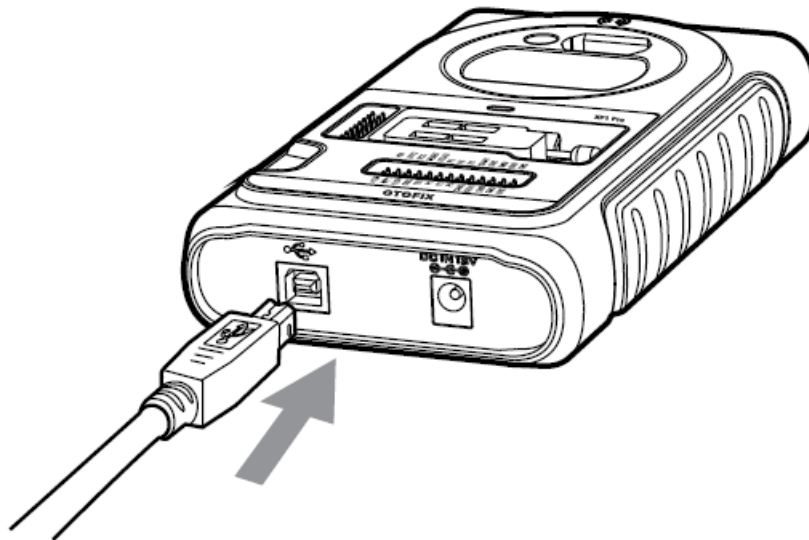
Four components can be connected to this port: Mercedes Infrared Collector, ECU Cable, MCU Cable, and MC9S12 Cable.

IMPORTANT:

Before operating or maintaining this unit, please read these instructions carefully. Pay extra attention to the safety warnings and precautions. Use this unit correctly and properly. Failure to do so may cause damage and/or personal injury and will void the production warranty.

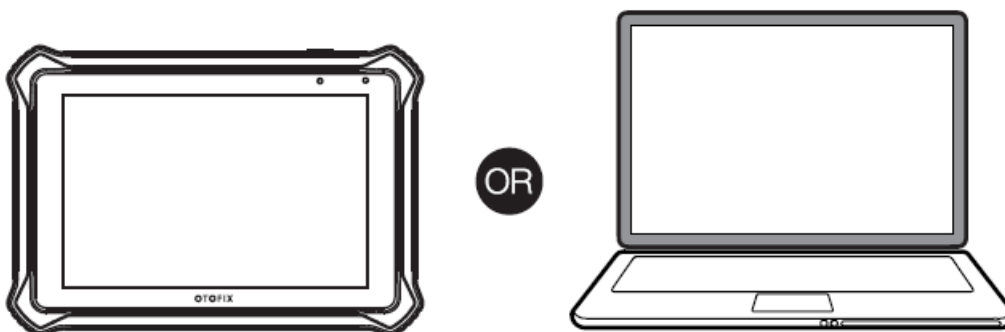
STEP 1

Insert the USB port into XP1 Pro. Ensure the proper connection.



STEP 2

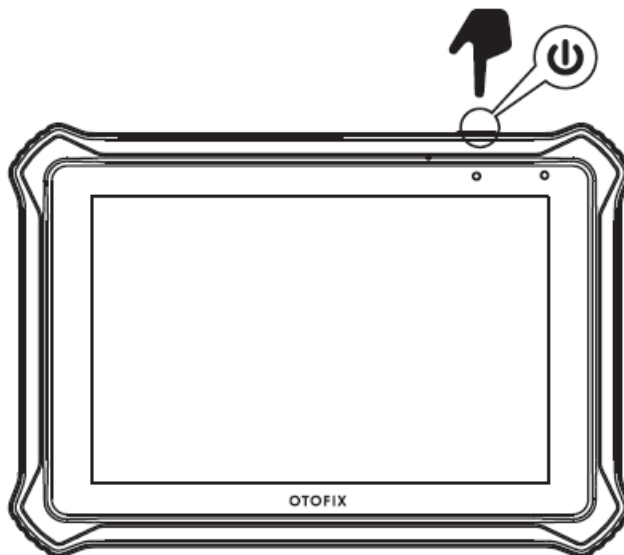
Connect the other port of the USB cable with OTOFIX IMMO & Key Programming Tablet or PC which has installed the PC programmer. Ensure the proper communication.



STEP 3

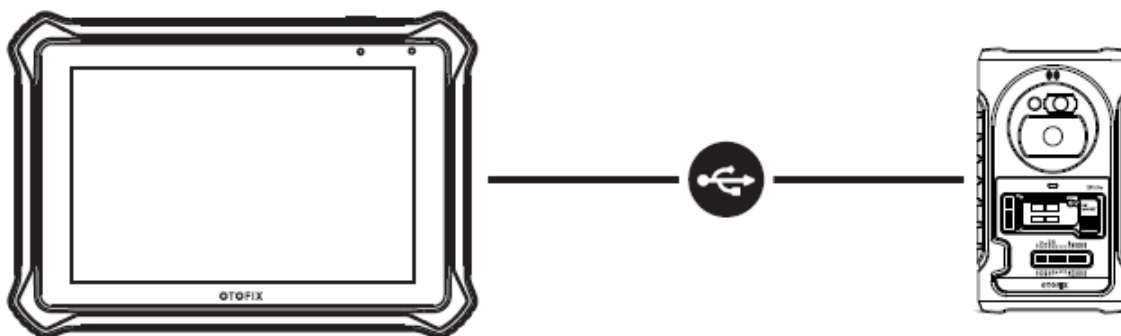
Activate OTOFIX IMMO & Key Programming Tablet or the software from PC. Make sure the Display Tablet has

sufficient battery or the software from PC has been updated to the latest version.



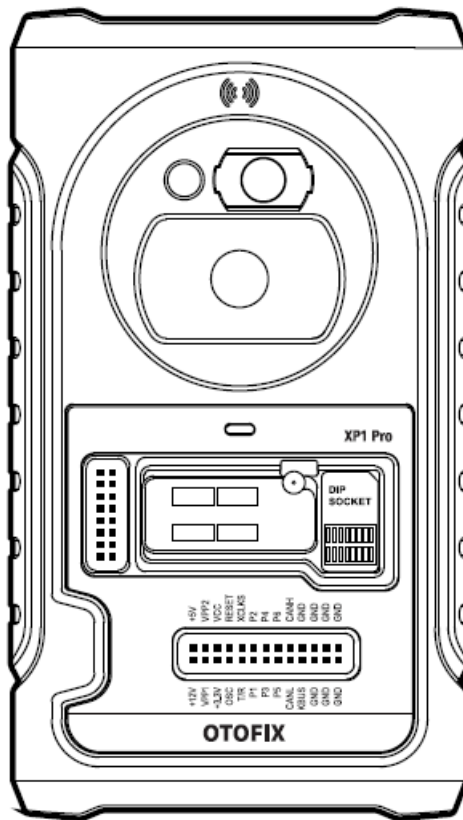
STEP 4

Connect OTOFIX IMMO & Key Programming Tablet (the software from PC) with XP1 Pro by USB cable.

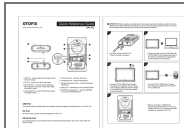


STEP 5

After the connection of IMMO & Key Programming Tablet with XP1 Pro, the LED indicator from XP1 Pro will display green light, indicating the readiness of XP1 Pro.



Documents / Resources



[OTOFIX XP1 Pro Key Programmer](#) [pdf] User Guide
XP1 Pro Key Programmer, XP1 Pro, Key Programmer