



## ostec HDMI Microscope User Manual

[Home](#) » [ostec](#) » ostec HDMI Microscope User Manual 

### Contents

- 1 ostec HDMI Microscope
- 2 Safety Requirements
- 3 Packing List
- 4 Function Introduction of Each Part
- 5 Accessory Introduction
- 6 Installation Guide
- 7 Instructions
- 8 Photography
- 9 Record
- 10 Frozen
- 11 Menu Setup
- 12 Exposure setup
- 13 White balance adjustment
- 14 Crosshair mark
- 15 Disclaimer
- 16 Safety instructions
- 17 Documents / Resources
- 18 Related Posts



**ostec HDMI Microscope**



## Safety Requirements

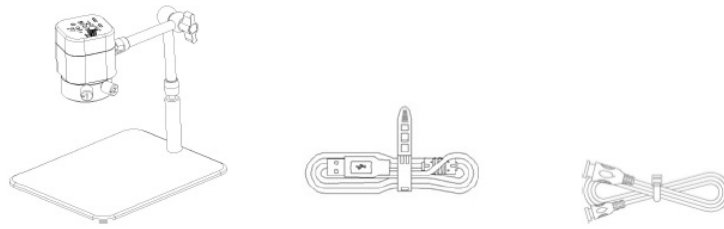
### Cautions and Notes

1. To avoid danger or damage incurred to the lens, do not touch the lens or sensor directly with your fingers.
2. To avoid failure or electric shock hazards and so on, do not disassemble or modify the internal structure of the device.
3. Do not plug in or unplug the Power connection port when your hands are wet.
4. Do not use alcohol and other organic solvents to clean.
5. If the lens or sensor is dirty or damp, you should better use dry and non-linen fabric or professional lens tissue to wipe them. To avoid scratches on the surface, do not touch the lens with your fingers. Wipe the lens or sensor lightly.
6. The products are not specifically designed for outdoor use. Do not expose it to the outdoor environment without any protection. Excessive temperature and humidity will damage the lens. Please avoid using the product in the following environment: high temperature or high humidity environment, places with direct sunlight, dirt, or vibration, and places near a heat sources.
7. Please use and store in the following environment:  
Operating temperature  $-10^{\circ}\text{C} \sim 40^{\circ}\text{C}$   
Storage temperature  $-10^{\circ}\text{C} \sim 60^{\circ}\text{C}$   
Operating Humidity 30~60%RH  
Storage Humidity 10~80%RH
8. If any foreign matter, water, or liquid enter into the device by accident, disconnect the Power line immediately. Please send it to the maintenance center and do not use the hair dryer to dry it by yourself.
9. To prevent the microscope from being tripped over or dropped, please put away the device's connect cable in use or on standby.
10. To avoid electric shock by accident, please power off the microscope before you move your display or equipment.
11. The cleanliness of the device lens will directly affect the clarity degree of contents from the computer screen during a preview. Problems like various circles or spots on the screen may mostly be incurred by dirt on the lens. When cleaning, please use professional lens tissue or another professional detergent to clear the dirt on the lens.

### Packing List

1. Microscope

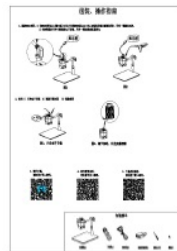
2. USB cable
3. HDMI cable



4. Adapter
5. Screwdriver
6. Screw

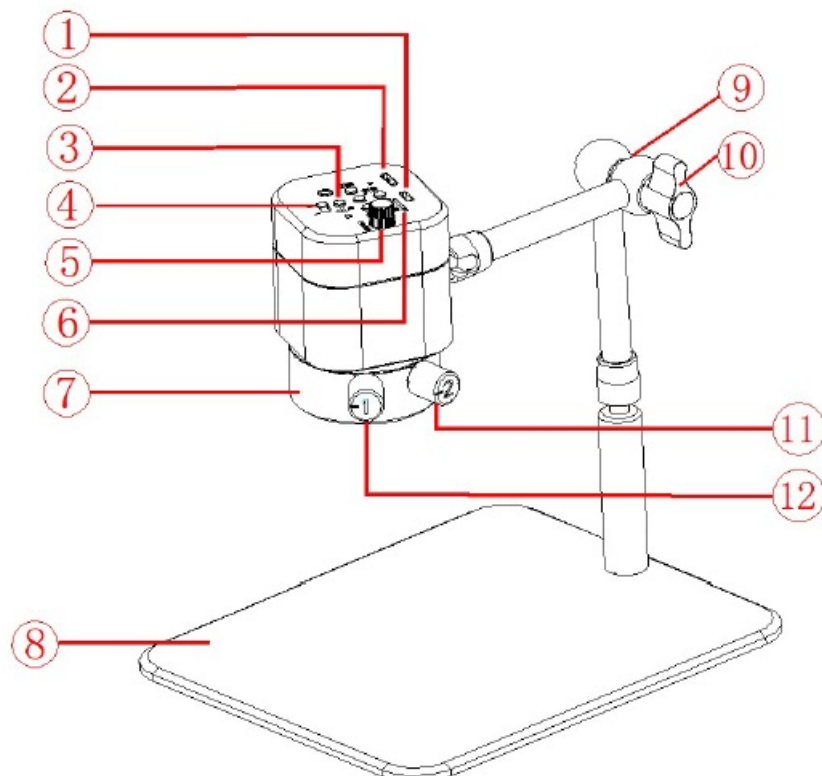


7. Quick installation guide
8. Wired controller(optional accessories)



## Function Introduction of Each Part

### Name and Function for Each Part of Microscope



1. HDMI port
2. USB port
3. Push-button
4. digital camera Switch
5. Focus knob buttons can match each other to achieve different functions.
6. TF card slot
7. light lamp
8. Bottom plate
9. Stand
10. Mobile knob
11. Adjustment knob of the coaxial light
12. Adjustment knob of the diffuse reflectance light

- Connect to the display with HDMI to realize signal transmission.
- Connect to the adapter with USB to supply power for the electronic eyepiece.

**Left button** Menu/return/frozen (hotkey) function. The “Menu” function will be activated in the mode of photographing, playing back, and recording. In the mode of photographing and recording, a long press (2 seconds) will trigger the “frozen” function. After entering the menu, the “return” function will be on. Bottom button Zoom out/downward/video fast forward function. The “Reduction” function is on in the mode of photographing and recording. The “Downward” function is on after entering the menu or in the mode of playing back. Video playing will be changed into a “fast rewind” function in the mode of playing back.

**Top button** Zoom in/upward/speed retreat function. The “Magnification” function will be activated in the mode of photographing and recording. “Upward” function be activated after entering the menu or during browsing. Video playing will be changed into a “fast rewind” function in the mode of playing back.

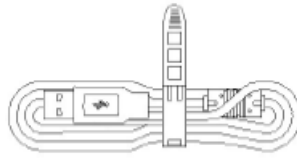
**Middle button:** Record/camera/playback function. The “Recording” function is for the mode of recording. “photographing” function is for the mode of photographing. In the mode of playing back, the recording file carries the function of “playing back”.

**Right button** Mode/sure/crosshair (hot key) function. Mode includes “camera”, “play back” and “record”. Without entering the menu, “Mode switch” function will be activated and can be switched successively among three modes, namely photographing, playing back and recording. “Confirm” function will be on after entering the menu. Long press in the mode of photographing and recording activates the mode of “cross line” shortcut key.

- Put the switch to right: turn on the digital camera; put the switch to left: turn off the digital camera. Rotate the knob to implement the focus function; Rotate clockwise: back focal length decreases and object distance increases; Rotate anticlockwise: back focal length increases and object distance decreases.
- The location of TF card, photos and videos will be stored on the TF card.
- The coaxial light and the diffuse reflection coexist, and the two effect lights are respectively controllable; the coaxial light lamp adopts a circular distribution of 13 light beads at a small angle; the diffuse reflection light is distributed by 18 high-brightness light beads, and the brightness is uniform.
- Aluminum alloy bottom plate.
- can rotate by 360 degree.
- Loosen the knob anticlockwise and the stand will be adjusted in any degree; tighten the knob clockwise and the current position of the electronic eyepiece can be fixed.
- Rotate Clockwise: turn on the coaxial light/strengthen coaxial lightness rotate counterclockwise: REDUCE the coaxial lightness/turn off the coaxial light.

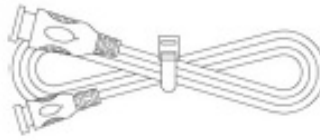
- Rotate Clockwise: turn on the diffuse reflectance light/strengthen the diffuse reflectance lightness rotate counterclockwise: weaken the diffuse reflectance lightness/turn off the diffuse reflectance light.

## Accessory Introduction



### USB cable

- The electron microscope can be powered by connecting to the adapter.



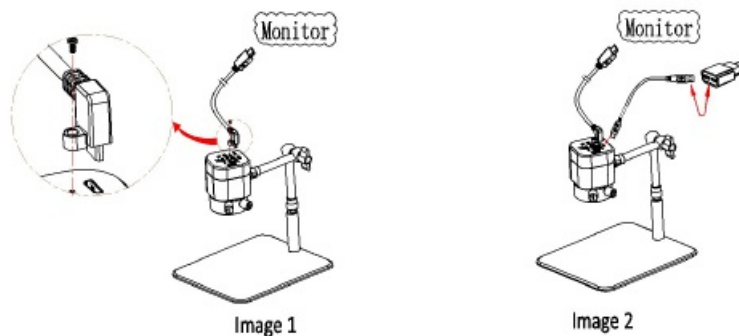
### • HDMI cable

Connecting the electron microscope to the display can realize the signal.

## Installation Guide

### Methods of application of electron microscope

1. Choice of two modes of PC connection Uses the USB cable to connect the microscope and computer.
2. **HDMI connection:**
3. As shown in Figure 1, use the HDMI cable to connect the microscope and monitor, and use the screws to lock the microscope and HDMI cable. As shown in Figure 2, use the USB plug to power the microscope.



4. Start to use Turn on the camera adjust the camera position adjust the focal length



Image 3: Turn on the camera



Image 4: Adjust the focal length on the top of camera to produce clear image.

3. Software download:  
Please scan the QR code.



4. Software manual:  
Please scan the QR code.



5. Product user manual:  
Please scan the QR code.




## Instructions


### introduction of Various Functions

- **a)** The machine contains altogether 5 press buttons. For press button instructions, please refer to chapters 4-1. Besides, the machine can also connect to a wired controller with 5 press buttons via a connected device.
- **b)** Short press refers to press time 0.2s~1s. The long press refers to press time more than 2s or above. (Without special reference, press below all means short press).
- **c)** For 10 seconds without operation, the system will automatically hide the icon on the screen desk for users to watch the video more conveniently. The icon on the desk can be awakened by pressing the left button and the other 4 buttons will execute the command of the current press button while been awakened. Users can press arbitrary button to awake the desk icon .
- **d)** The maximum magnification ratio of the zoom in function button: x4. Zoom out function button can only be available when being zoomed in first.
- **e)** The highest resolution pixel of photography is:1920×1080;
- **f)** Shutdown save parameter: Each time the camera eyepiece is started, the current parameter is the parameter of the last shutdown. When you initialize the parameter, you can restore the factory settings by using the "Restore defaults" in the menu.

## Photography


The top right corner icon  displays for photography mode. Please ensure the TF card insertion, and press the "middle button" for picture shooting. Pictures will be automatically saved into the Photo file under TF card file Microscope. File name format: "Photo\_00001.jpg" "Photo\_00002.jpg"

## Record

The icon  on the top right corner of the screen displays for recording mode to record sound and video

files. Please ensure the TF card insertion, press “middle button” for recording and press “middle button” again to exit recording. Records will be automatically saved into the Video file under TF card file Microscope. File name format “Video\_0001.mov” “Video\_0002. mov”

**Note:** The maximum capacity of recording file is 4G. When 4G capacity is reached, a new recording file will be started.

The top right corner icon  displays for Playback mode. Flip over for observation by pressing “Top Button” or “Bottom button”. Pressing button “Left button” can enter the file attributes interface, which includes three operation functions such as delete, protect and slide show.

- Photo\_xxxx.JPG” on the top right corner means the picture is an photo.
- Video\_xxx.MOV” on the top right corner means the picture is a video. Press “Middle button” to play/pause recording. Press “Top Button” or “Bottom button” can fast forward or fast backward during playing. pressing “Right button” exit playing.

## Frozen

Under the mode of camera or recording, long press “left button” and the right side of the desk will display the icon , which is the frozen screen. You can long press “the left button” or short press any button to defrost the screen and the icon disappears. Each button’s function is performed after unfreeze.

## Menu Setup

Pressing “Left Button” to enter the menu bar interface. Through button “ Top Button” and “Bottom Button” to move the cursor up and down for selecting the required function. Press “Right Button” to enter into setup. After setup, press “Left Button” to exit menu bar.

**Note:** common functions are set up on the menu bar, namely exposure compensation, white balancing, 3 sequence, image quality, HDR, resolution ,sharpness, shooting ways, color, quick preview, button press sound ,auto power off, language ,frequency ,image rotation ,frozen and date/time.

## Exposure setup

Under the mode of camera or recording, press the “left button” to enter the menu bar. Press the “top button” or the “bottom button” to select the menu bar “exposure EV” and then press the “right button” to enter the exposure setup interface. Then the screen shows the icon . (Note: font flashes: stands for the cursor is located in current position. Red font: stands for the status of been selected. ) Press the “top button” or “bottom button” to move the cursor. Press the “right button” to select the current status and the font color will turn red. Press the “left button” to exit the exposure setup interface.

1. The cursor points to A, the real-time automatic exposure function will be started by pressing the “right button” and the color of the letter A will turn red.
2. The cursor points to S, the single real-time automatic exposure function will be started by pressing the “right button” and the color of the letter S will turn red.
3. The cursor points to M, the manual exposure can be started by pressing the “right button” and the color of the letter M will turn red and a flashing red number 0 will also appear on the right side. Press the “top button” or “bottom button” to change the current number value (the valid adjustment range is -10~+10 and the default value is 0). Press the “right button” to save the number value and the number value will be covered simultaneously.

## White balance adjustment

Under the mode of camera or recording, press the “left button” to enter the menu bar. Press the “top button” or the “bottom button” to select the menu bar “white balance WB” and then press the “right button” to enter the interface of the white balance setup. Now the screen will display the icon . (Note: font flashes: stands for the cursor is located in current position. Red font: stands for the status of been selected. ) Press the “top button” or the “bottom button” to move the cursor. Press the “right button” to select the current status and the font color will turn red. Press the “left button” to exit the White balance setup interface.

1. The cursor points to A, the real-time automatic white balance function will be started by pressing the “right button” and the color of the letter A will turn red.
2. The cursor points to S, the single automatic white balance function will be started by pressing the “right button” and the color of the letter S will turn red.
3. The cursor points to M, the manual white balance can be started by pressing the “right button” and the color of the letter M will turn red and a group of value will also appear on the right side. The flashing red number is the value currently been selected. Press the “top button” or “bottom button” to change the current number value (the valid adjustment range is 1-255). Press the “right button” to switch the value R, G and B consequently. Whichever value letter (R G B) is selected, as long as the “left button” is pressed, RGB current number value will be saved and altogether RGB and the number value will be covered.
4. Note: From automatic white balance to manual white balance: the value of manual white balance is the white balance under the current background. From single automatic white balance to manual white balance: the value of manual white balance is the previous single automatic white balance.

## Crosshair mark

Under the mode of camera or recording, long press the “right button” to recall the crosshair mark and then long press the “right button” to cancel the crosshair mark. The default cross line invoked by shortcut key is the first kind. If either of the other two shortcut keys of the cross line is needed, other cross lines will be firstly invoked via menu and current cross line is controlled by shortcut key. There are three kinds of crosshair marks (“crosshair mark” menu can be found in the menu bar)

1. Cross (default)
2. Grid
3. Concentric circles

## Disclaimer

1. In order to protect the legitimate rights and interests of users, please carefully read the instructions, disclaimers and safety instructions provided with this product before using it. The company reserves the right to update the above documents. Please operate the product according to the instructions and safety instructions.
2. Once you begin to use the product, you shall be deemed to have read, understood, recognized and accepted all terms and contents of the product’s instructions, disclaimers and safety instructions. Users undertake to be responsible for their actions and all consequences. User undertakes to use the product only for legitimate purposes and agrees to these terms and any relevant policies or guidelines that the company may establish.
3. In the process of using this product, please strictly abide by and execute the requirements including but not limited to the instructions and safety instructions. All personal injuries, accidents, property losses, legal disputes and other adverse events that cause conflicts of interest caused by violation of the safety instructions




or irresistible factors shall be borne by users themselves, and the company shall not assume any responsibility.

**Safety instructions**

- 1. please do not use wet hands to plug and unplug the power supply of the equipment
- 2. please be sure to use a regular brand power socket, and make sure the grounding is well grounded to prevent electric shock
- 3. please be sure to make regular safety checks on sockets and plugs to avoid potential electrical safety hazards caused by aging and short circuit
- 4. please be sure not to use the product in a humid or hot environment to ensure the safety of the product
- 5. please be sure to loosen bundle cords of the power cable before using, to avoid electromagnetic induction and heating, thus increasing the heat dissipation speed
- 6. please be sure not to use the product equipment or socket or other places in high or easy to fall, so as to avoid damage
- 7. before opening the socket power supply, please be sure to turn off the load power switch of the product equipment
- 8. the company reserves the rights to improve product, upgrade technology and change parameters without prior notice.

**Documents / Resources**

	<p><a href="#">ostec HDMI Microscope</a> [pdf] User Manual</p> <p>Integrated Microscope, Unique Digital Microscope, HDMI Microscope, Microscope</p>
---	---