

Ossila Source Measure Unit USB Drivers Software Installation Guide

[Home](#) » [Ossila](#) » Ossila Source Measure Unit USB Drivers Software Installation Guide 

Contents

- [1 Ossila Source Measure Unit USB Drivers Software](#)
- [2 Automatic Installation](#)
- [3 Installation from Executable](#)
- [4 Manual Installation](#)
- [5 Documents / Resources](#)
- [6 Related Posts](#)

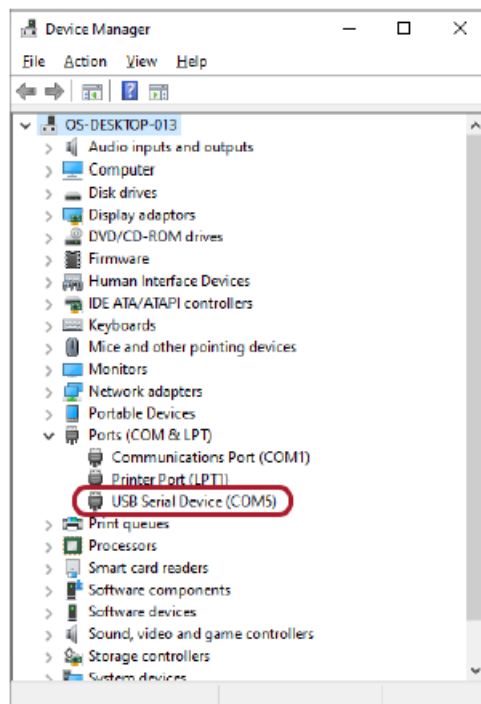


Ossila Source Measure Unit USB Drivers Software



Automatic Installation

Connect the USB cable and power on the Source Measure Unit (or other equipment). The unit will be detected automatically, and the drivers will be downloaded and installed. It will appear in the Device Manager under the “Ports (COM & LTP)” section as “USB Serial Device (COM#)” as shown in Figure 1.1.



Installation from Executable

Executables for installing the USB drivers can be found on the USB drive provided with the equipment or can be downloaded from our website at: ossila.com/pages/software-drivers. Opening the SMU-driver folder will show the files in Figure 2.1.

Name	Date modified	Type	Size
amd64	21/07/2021 11:01 AM	File folder	
license	21/07/2021 11:01 AM	File folder	
x86	21/07/2021 11:01 AM	File folder	
arduino	21/07/2021 11:01 AM	Security Catalogue	11 KB
arduino	21/07/2021 11:01 AM	Setup Information	9 KB
Windows 32-bit SMU Driver	21/07/2021 11:01 AM	Application	901 KB
Windows 64-bit SMU Driver	21/07/2021 11:01 AM	Application	1,024 KB

Figure 2.1. Files in the SMU-driver folder.

Run either “Windows 32-bit SMU Driver” or “Windows 64-bit SMU Driver” based upon your system type and follow the on-screen instructions. If you are unsure on which to install, you can check your system type by opening “About your PC” or “System Properties”, it is displayed under “Device specifications” as shown in Figure 2.2.

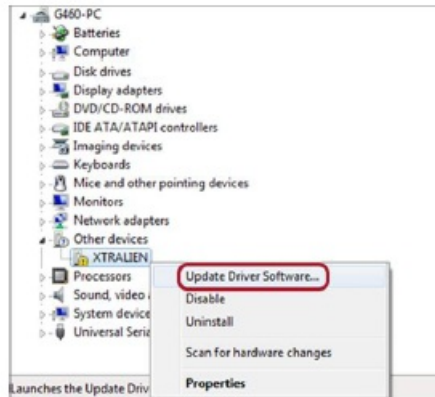
Device specifications	
Device name	OS-DESKTOP-013
Processor	Intel(R) Core(TM) i7-7700 CPU @ 3.60GHz 3.60 GHz
Installed RAM	16.0 GB
Device ID	5B2CBDC7-9442-4652-8A77-5257AC83A545
Product ID	00325-80000-00000-AAOEM
System type	64-bit operating system, x64-based processor
Pen and touch	No pen or touch input is available for this display

Figure 2.2. System type shown in “About your PC” device specifications.

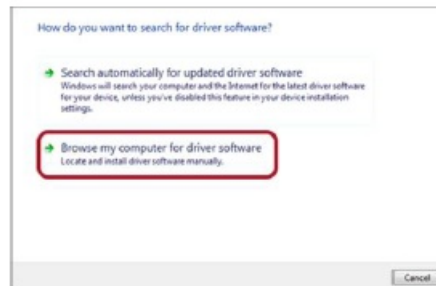
Manual Installation

If the drivers fail to install properly the unit will appear under the “Other devices” section as “XTRALIEN”. If installing the drivers using the executable installers does not resolve this, the USB driver can be installed manually by the following these steps:

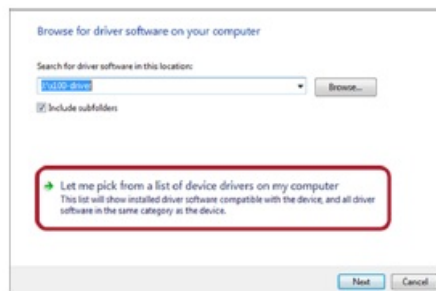
1. Right click on “XTRALIEN” under the “Other devices” section and choose “Update driver software...”.



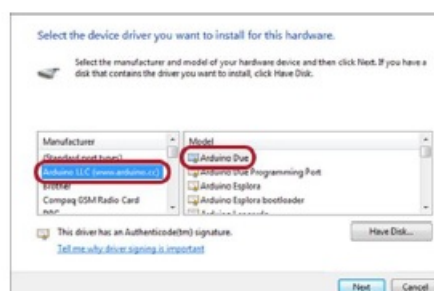
2. Select “Browse my computer for driver software”.



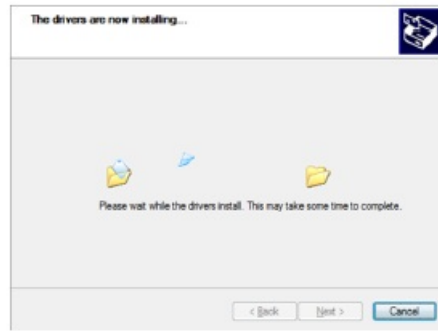
3. Select “Let me pick from a list of device drivers on my computer”, then click next.



4. Select “Ports (COM & LTP)” then click next.
5. Select “Arduino LCC” from the manufacturer list and “Arduino Due” from the model list.



6. Wait for the device driver installation wizard to finish the installation.



7. If the installation has been successful, the unit will appear as Arduino Due (COMX) under the “Ports (COM & LPT)” section of the device manager.

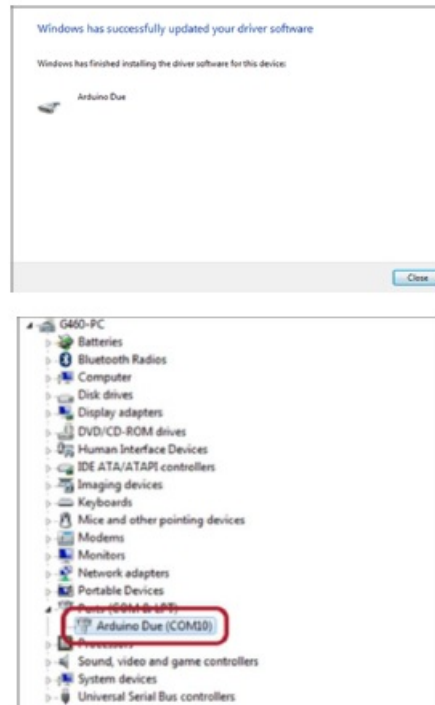
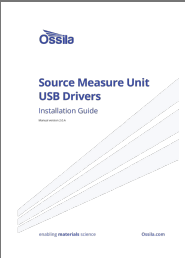


Figure 3.1. Ossila Source Measure Unit in the Device Manager after successful manual USB driver installation.

Documents / Resources

	<p>Ossila Source Measure Unit USB Drivers Software [pdf] Installation Guide Source Measure Unit USB Drivers Software, Source Measure Unit USB Drivers, Software</p>
---	---