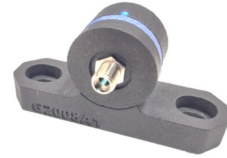


Ossila G2008B-C LED Light Source



# Ossila G2008B-C LED Light Source User Manual

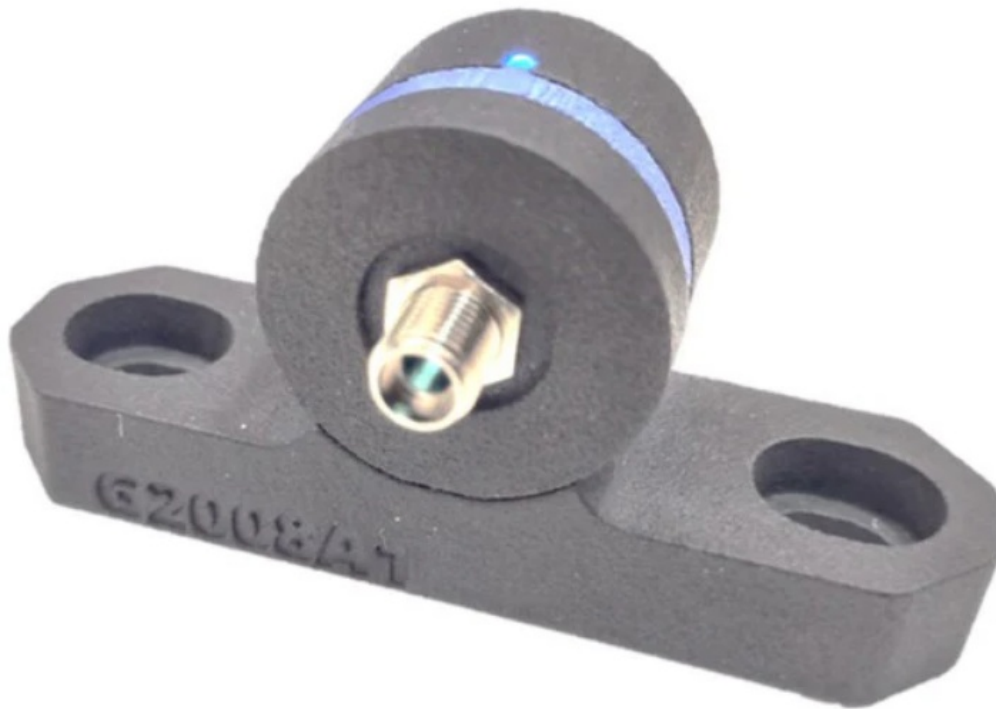
[Home](#) » [Ossila](#) » Ossila G2008B-C LED Light Source User Manual 

## Contents

- [1 Ossila G2008B-C LED Light Source](#)
- [2 EU Declaration of Conformity](#)
- [3 Specifications](#)
- [4 Safety](#)
- [5 LED Light Source](#)
- [6 Unpacking](#)
- [7 Operation](#)
- [8 Documents / Resources](#)
  - [8.1 References](#)



**Ossila G2008B-C LED Light Source**



## EU Declaration of Conformity

We

- Company Name: Ossila BV
- Postal Address: Biopartner 3 building, Galileiweg 8
- Postcode: 2333 BD Leiden
- Country: The Netherlands
- Telephone number: +31 (0)71 3322992
- Email Address: [info@ossila.com](mailto:info@ossila.com) declare that the DoC is issued under our sole responsibility and belongs to the following product:
- Product: LED Light Source (G2008B1, G2008C1, G2011A1, G2011B1, G2011C1, G2011D1, G2011E1, G2011F1, G2011G1, G2012A1, G2012B1, G2012C1, G2012D1, G2012E1, G2012F1, G2012G1)

### Object of declaration

LED Light Source (G2008B1, G2008C1, G2011A1, G2011B1, G2011C1, G2011D1, G2011E1, G2011F1, G2011G1, G2012A1, G2012B1, G2012C1, G2012D1, G2012E1, G2012F1, G2012G1) The object of the declaration described above conforms with the relevant Union harmonisation legislation:

- EMC Directive 2014/30/EU
- RoHS Directive 2011/65/EU

## Specifications

**Table 2.1. LED Light Source specifications**

Product Code	Wavelength	Optical power
G2008B1	375 nm	>35 mW
G2008C1	405 nm	>55 mW
G2011A1	450 nm	>35 mW
G2011B1	490 nm	>11 mW
G2011C1	520 nm	>13 mW
G2011D1	550 nm	>4 mW
G2011E1	590 nm	>5 mW
G2011F1	620 nm	>12 mW
G2011G1	670 nm	>23 mW
G2012A1	700 nm	>23 mW
G2012B1	740 nm	>15 mW
G2012C1	770 nm	>5 mW
G2012D1	800 nm	>16 mW
G2012E1	850 nm	>21 mW
G2012F1	910 nm	>19 mW
G2012G1	980 nm	>20 mW

## Safety

### Warning

The Ossila LED Light Sources have an assigned risk group classified under the IEC/EN 62471 (Photobiological Safety of Lamps and Lamp Systems) Standard. The risk group classifications are listed below. Do not look directly into the source. Avoid skin and eye exposure.

## LED Light Source

Product Code	Risk Group(s)	Warning(s)
G2008B1	Actinic UV – High risk Eye UV-A – Low risk	<b>WARNING.</b> UV emitted from this product. Avoid eye and skin exposure to unshielded products.
G2008C1	Actinic UV – High risk Blue light – Low risk	<b>WARNING.</b> UV emitted from this product. Avoid eye and skin exposure to unshielded products.
G2011A1	Actinic UV – Moderate risk Blue light – Low risk	<b>CAUTION.</b> UV emitted from this product. Eye or skin irritation may result from exposure. Use appropriate shielding.
G2011B1	Actinic UV – Low risk Blue light – Low risk	<b>NOTICE.</b> UV emitted from this product. Minimize exposure to eyes and skin. Use appropriate shielding.
G2011C1	Actinic UV – Low risk Blue light – Low risk	<b>NOTICE.</b> UV emitted from this product. Minimize exposure to eyes and skin. Use appropriate shielding.
G2011D1	Actinic UV – Low risk	<b>NOTICE.</b> UV emitted from this product. Minimize exposure to eyes and skin. Use appropriate shielding.
G2011E1	Exempt	N/A
G2011F1	Actinic UV – Moderate risk	<b>CAUTION.</b> UV emitted from this product. Eye or skin irritation may result from exposure. Use appropriate shielding.
G2011G1	Actinic UV – Moderate risk	<b>CAUTION.</b> UV emitted from this product. Eye or skin irritation may result from exposure. Use appropriate shielding.
G2012A1	Actinic UV – Moderate risk	<b>CAUTION.</b> UV emitted from this product. Eye or skin irritation may result from exposure. Use appropriate shielding.
G2012B1	Actinic UV – Moderate risk	<b>CAUTION.</b> UV emitted from this product. Eye or skin irritation may result from exposure. Use appropriate shielding.
G2012C1	Actinic UV – Low risk	<b>NOTICE.</b> UV emitted from this product. Minimize exposure to eyes and skin. Use appropriate shielding.

Product Code	Risk Group(s)	Warning(s)
G2012D1	Actinic UV – Moderate risk	<b>CAUTION.</b> UV emitted from this product. Eye or skin irritation may result from exposure. Use appropriate shielding.
G2012E1	Actinic UV – Low risk	<b>NOTICE.</b> UV emitted from this product. Minimize exposure to eyes and skin. Use appropriate shielding.
G2012F1	Actinic UV – Low risk	<b>NOTICE.</b> UV emitted from this product. Minimize exposure to eyes and skin. Use appropriate shielding.
G2012G1	Actinic UV – Low risk	<b>NOTICE.</b> UV emitted from this product. Minimize exposure to eyes and skin. Use appropriate shielding.

### Use of Equipment

The Ossila LED Light Sources are designed to be used as instructed. It is intended for use under the following conditions:

- Indoors in a laboratory environment (Pollution Degree 2).
- Altitudes up to 2000m.
- Temperatures of 5°C to 40°C; maximum relative humidity of 80% up to 31°C.

### Servicing

If servicing is required, please return the unit to Ossila Ltd. The warranty will be invalidated if:

- Modification or service has taken place by anyone other than an Ossila engineer.
- The Unit has been subjected to chemical damage through improper use.
- The Unit has been operated outside the usage parameters stated in the user documentation associated with the Unit.
- The Unit has been rendered inoperable through accident, misuse, contamination, improper maintenance, modification, or other external causes.

### Unpacking

### Packing List



Figure 4.1. Ossila LED Light Source.



Figure 4.2. USB type-A to type-C cable.

The standard items included with the Ossila UV Light are:

- Ossila LED Light Source.
- USB type-C cable.

### Damage Inspection


Examine the components for evidence of shipping damage. If damage has occurred, please contact Ossila directly for further action.

### Operation

The Ossila LED Light Source is powered by a USB type-C cable supplying 5 V at 100 mA. Any PC USB port or plug socket USB adapter can power the device. The source will turn on when the USB cable is plugged into the USB port on the rear of the device. A SMA905 optical fibre can be connected to the output port of the device. An indicator LED on the top of the unit will turn on while the system is powered. Do not look into the front of the device or expose any skin to the front of the device while the system is powered.

---

### Documents / Resources

	<p><a href="#">Ossila G2008B-C LED Light Source</a> [pdf] User Manual G2008B-C, G2011, G2012, G2008B-C LED Light Source, G2008B-C, LED Light Source, Light Source, Source</p>
---	---

### References

- [Ossila | Low Price Lab Equipment & Materials | Enabling Science](#)
- [User Manual](#)

## **Manuals+. Privacy Policy**

This website is an independent publication and is neither affiliated with nor endorsed by any of the trademark owners. The "Bluetooth®" word mark and logos are registered trademarks owned by Bluetooth SIG, Inc. The "Wi-Fi®" word mark and logos are registered trademarks owned by the Wi-Fi Alliance. Any use of these marks on this website does not imply any affiliation with or endorsement.