



# OSRAM SubstiTUBE T8 Connected EM Mains Ultra Output 24W User Guide

[Home](#) » [OSRAM](#) » OSRAM SubstiTUBE T8 Connected EM Mains Ultra Output 24W User Guide 

## Contents

- [1 OSRAM SubstiTUBE T8 Connected EM Mains Ultra Output 24W](#)
- [2 SubstiTUBE® T8 Connected](#)
- [3 Installations on Electromagnetic ballast 22\)](#)
- [4 Installations on Mains \(without ballast\) 23\)](#)
- [5 Mains](#)
  - [5.1 Installation guide](#)
- [6 Documents / Resources](#)
  - [6.1 References](#)
- [7 Related Posts](#)

# OSRAM

## OSRAM SubstiTUBE T8 Connected EM Mains Ultra Output 24W



### SubstiTUBE® T8 Connected

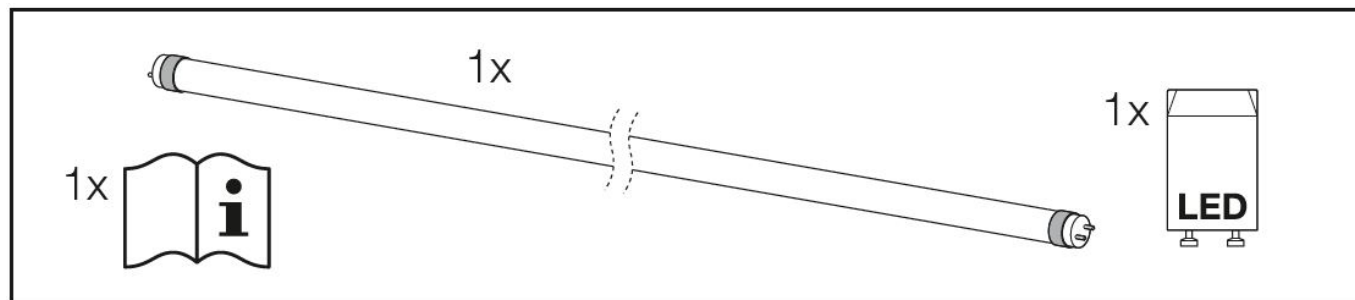
Please take the time to read this user instruction. The instruction contains important information and notes regarding the installation and operation.







**Important: To operate connected system, LEDVANCE Connected SENSOR is required:**

LEDVANCE Connected Sensor LB	maximum recommended mounting height: <4m 1) )	EAN: 4058075232969
LEDVANCE Connected Sensor HB	maximum recommended mounting height: 4m-14 m 1)	EAN: 4058075232983

Please visit our website [www.ledvance.com/substitube-connected](http://www.ledvance.com/substitube-connected) for detailed installation instructions.

Substitube® T8 Connected is suitable to certain T8 G13 bi-pin base / EM (CCG) / Mains. 2)



Symbol <sup>3)</sup>	Meaning <sup>4)</sup>	Remark <sup>5)</sup>
<b>SubstiTUBE® Connected</b>	Compatible with EM / Mains <sup>6)</sup>	
<b>EM</b>	Electromagnetic = Conventional Control Gear <sup>7)</sup>	Go to 1. installation <sup>8)</sup>
<b>Mains</b>	Remove ballast connect directly on 230V <sup>9)</sup>	Go to 2. installation <sup>10)</sup>
	Lamp not suitable for emergency operation <sup>11)</sup>	EM / Mains
	Lamps suitable for 50/60Hz operation <sup>12)</sup>	EM / Mains
	Lamps to be used in dry conditions or in a luminaire that provides protection <sup>13)</sup>	EM / Mains
	Dimming not allowed <sup>14)</sup>	Only possible with LEDVANCE Connected Sensor <sup>15)</sup>
	LED replacement starter <sup>16)</sup>	EM
	Lamp not suitable for high frequency operation (ECG) <sup>17)</sup>	HF

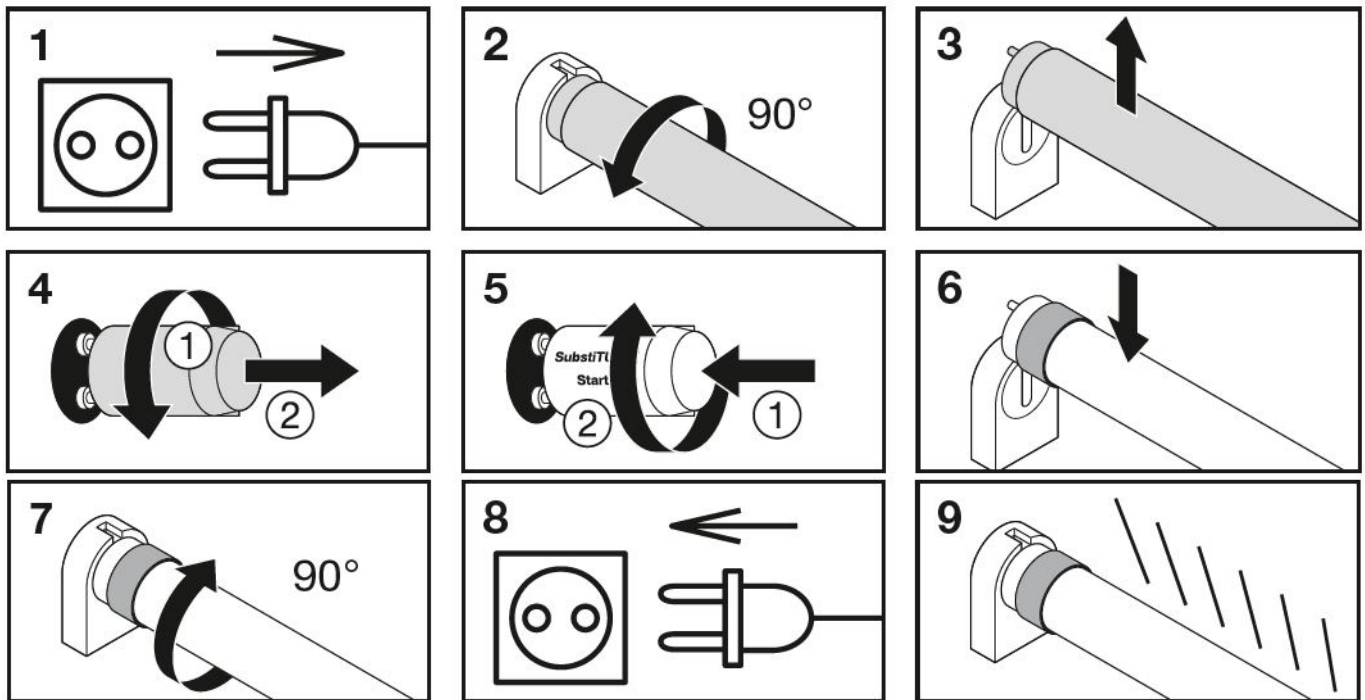
Replacement of T8 FL 18)	Storage temperature 19) (Ts)	Ambient temperature 20) (Ta)
0.6 m, 1.2 m, 1.5 m	-20° ... 80°C	-20° ... 50°C

Hereby, LEDVANCE GmbH declares that the radio equipment is in compliance with Directive 2014/53/EU. **The full text of the EU declaration of conformity is available at the following internet address:** [smart.plus.ledvance.com/declaration-of-conformity](http://smart.plus.ledvance.com/declaration-of-conformity). 21) Wireless radio used in Zig bee lamps/luminaires/components 2400 – 2483.5 MHz, max. RF output power 9.5dBm. 22)

## Installations on Electromagnetic ballast 22)

Please ensure that for Electro Magnetic (EM) application existing fluorescent starter is replaced with SubstiTUBE® LED starter (included in each packaging).

## EM (CCG)



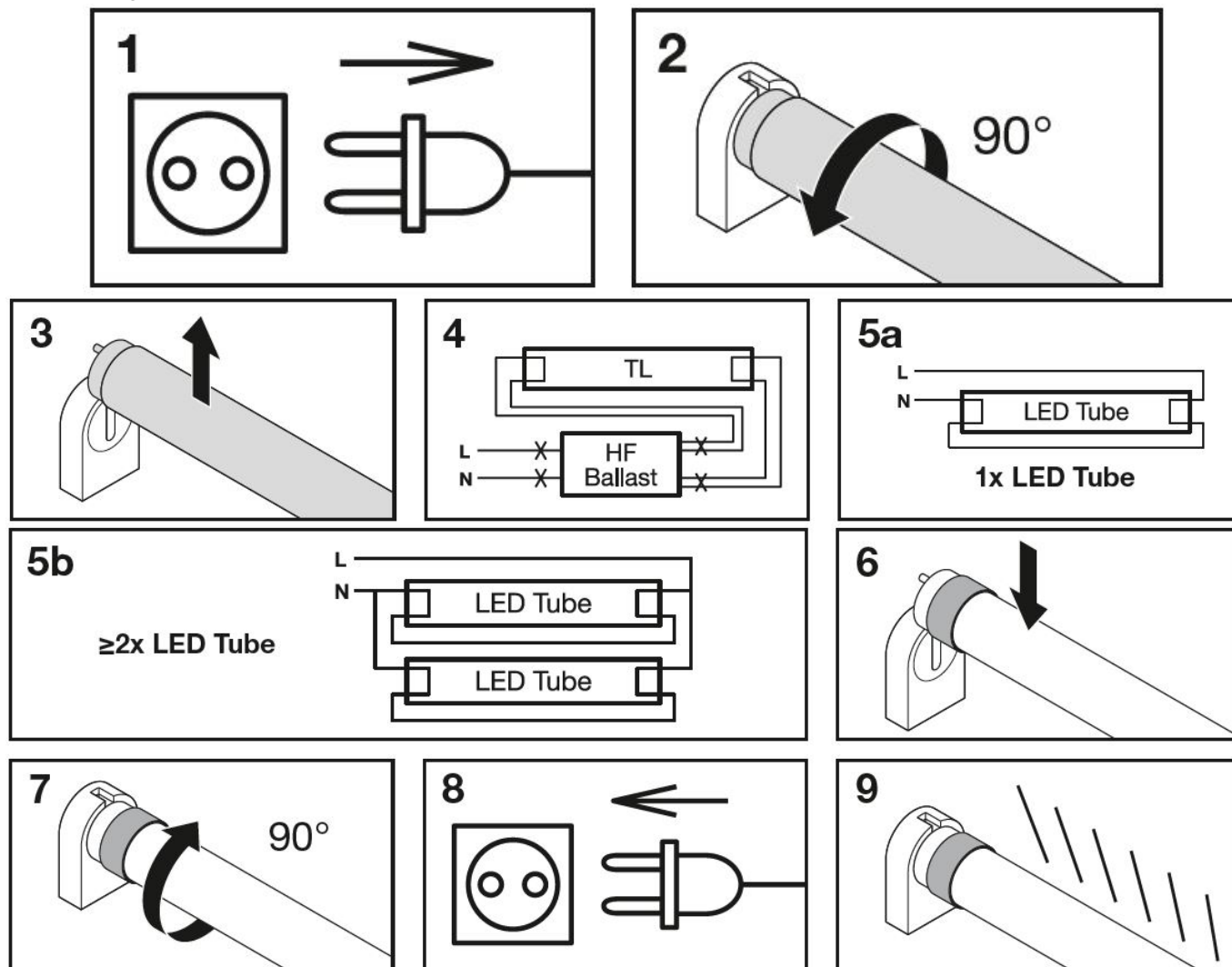
This lamp is designed for general lighting service (excluding for example explosive atmospheres). This lamp may not be suitable for use in all applications where a traditional fluorescent lamp has been used. The temperature range of this lamp is more restricted. In cases of doubt regarding the suitability of the application the manufacturer of this lamp should be consulted. In case of doubt regarding suitability of the application please measure tc max temperature on the product. In case of multi lamp luminaire application measure tc max temperature of all installed lamps. Please use a flexible thermosensor (e.g. "Type K"). SubstiTUBE® T8 Connected operated above tc max can lead to premature aging and failure of devices. SubstiTUBE® T8 Connected emits light only with a limited beam angle not like a fluorescent tube with 360° output. Not usable in tandem circuitry.

### Installations on Mains (without ballast) 23)

Cut wires and remove ballast and follow below instructions

#### Mains

## Installation guide

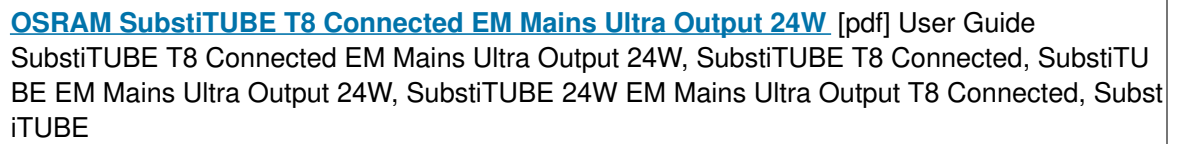


**Warning!** The fixture has been modified and can no longer operate the originally specified T8 Fluorescent lamp. Please use only OSRAM SubstiTUBE® LED.

LEDVANCE GmbH  
**Steinerne Furt 62**  
 86167 Augsburg, Germany  
[www.ledvance.com](http://www.ledvance.com)

**LEDVANCE Ltd, Aquila House**  
 Delta Crescent, Westbrook, Warrington  
 WA5 7NR, United Kingdom





- [!\[\]\(27c3f183a8911a7dac26d53c513f13df\_img.jpg\) Declaration-of-conformity | LEDVANCE](#)
- [!\[\]\(ad214d9b21f32b0bcdb2174ec1859140\_img.jpg\) Declaration of Conformity | LEDVANCE](#)
- [!\[\]\(f8eabab2f7644c4270a4e4839a4fe105\_img.jpg\) Corporate website | LEDVANCE](#)

Manuals+,