



OSRAM OBSL200 Lithium Jump Starter with Powerbank Function and LED Light Instruction Manual

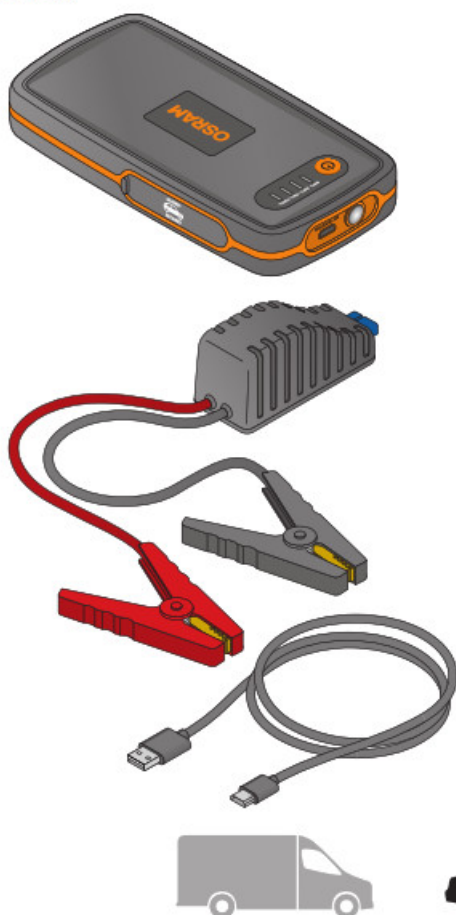
[Home](#) » [OSRAM](#) » OSRAM OBSL200 Lithium Jump Starter with Powerbank Function and LED Light Instruction Manual 

OSRAM

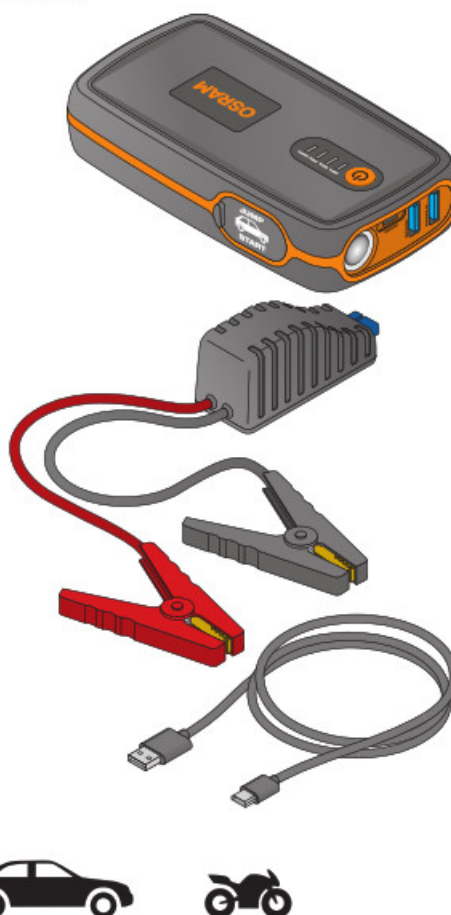
BATTERYstart

Lithium Jumpstarter with powerbank function and LED light. *

BATTERYstart 200
Content:

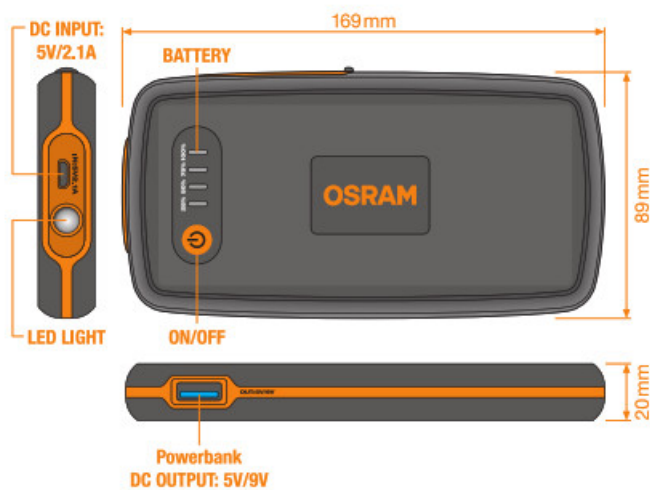
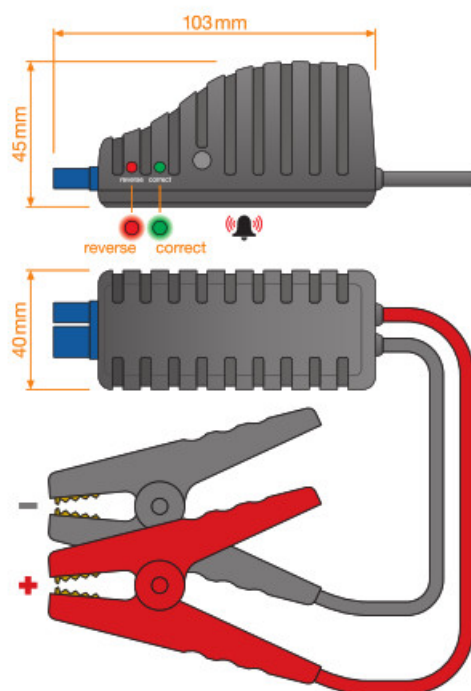


BATTERYstart 300
Content:

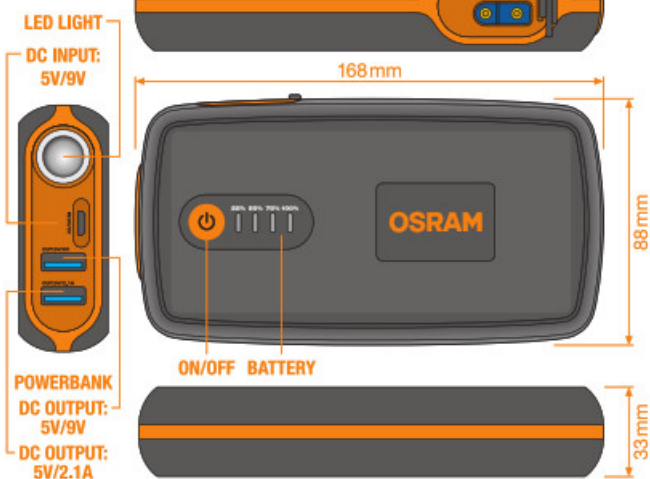
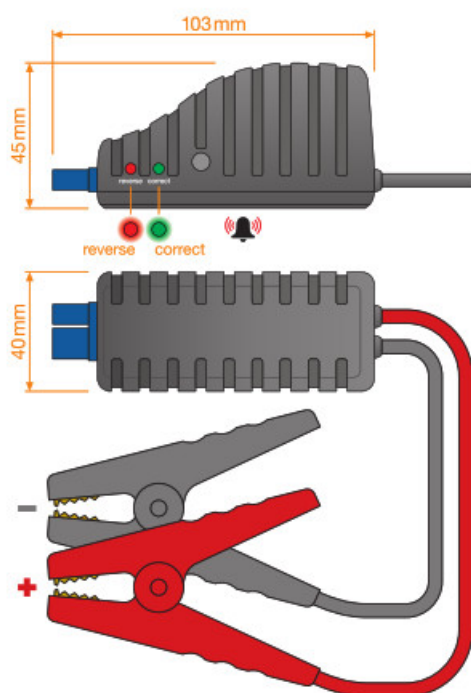


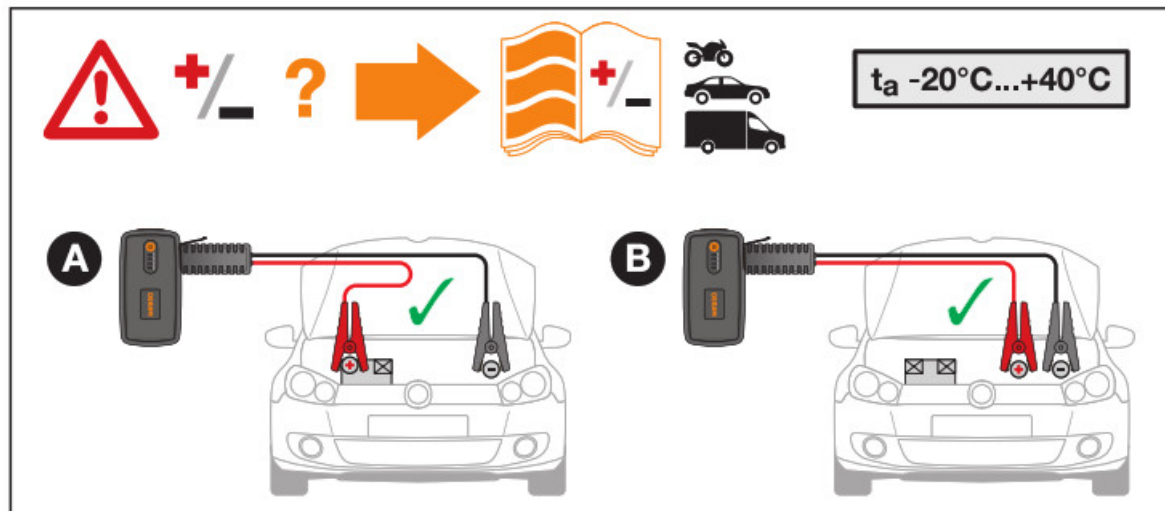
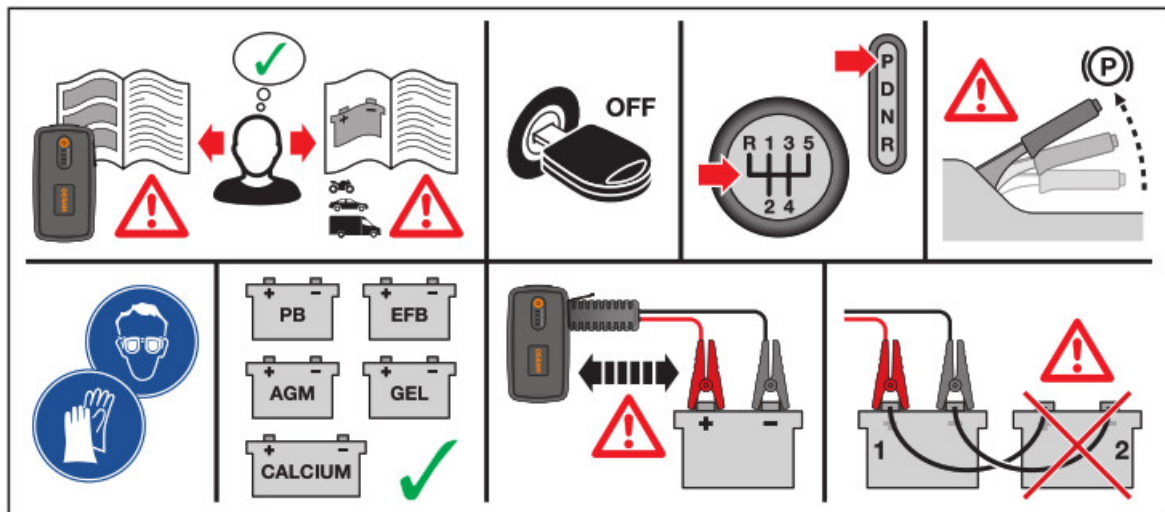
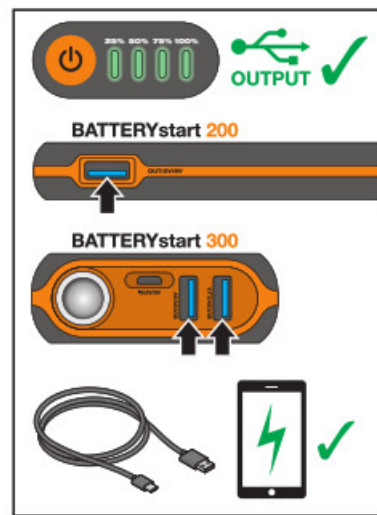
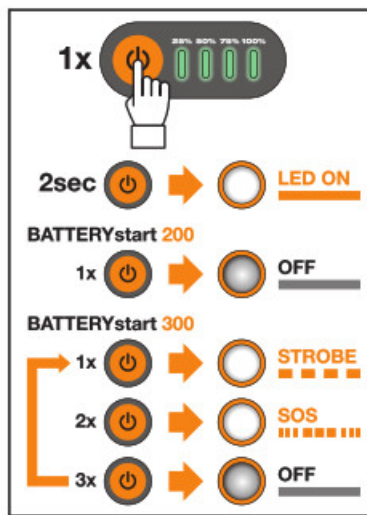
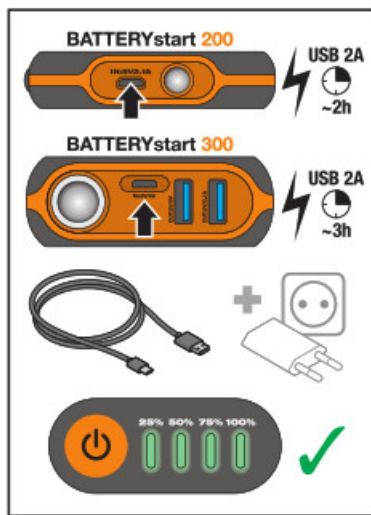
	BATTERYstart 200	BATTERYstart 300
	12V / $\leq 3.0\text{L}$ Petrol	12V / $\leq 6.0\text{L}$ Petrol, $\leq 3.0\text{L}$ Diesel
	6000 mAh	13000 mAh
	a: 150A(3s) / b: 500A(0.1s)	a: 300A(3s) / b: 1500A(0.1s)
	5V, 2.4A / 9V, 2.0A	5V, 2.4A / 9V, 2.0A / 12V, 1.5A
	-20°C...40°C	-20°C...40°C
	300g	490g

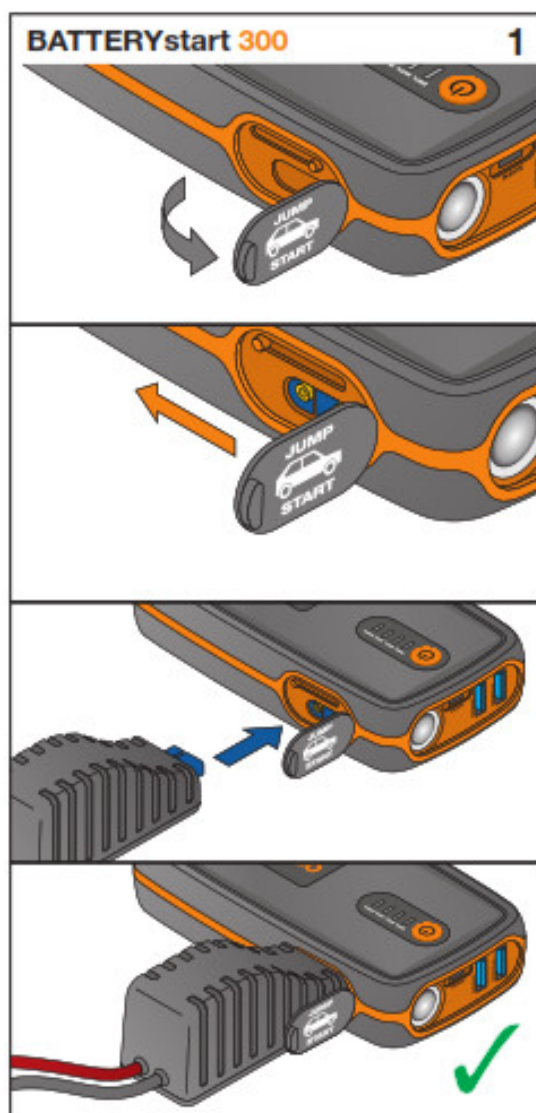
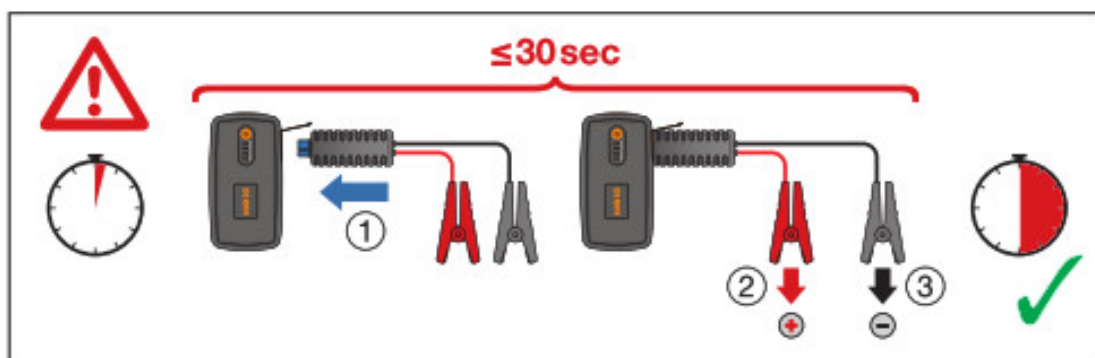
BATTERYstart 200

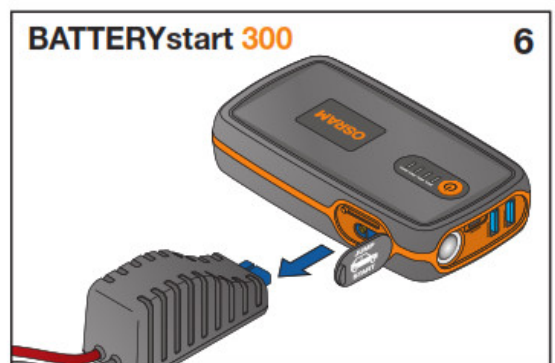
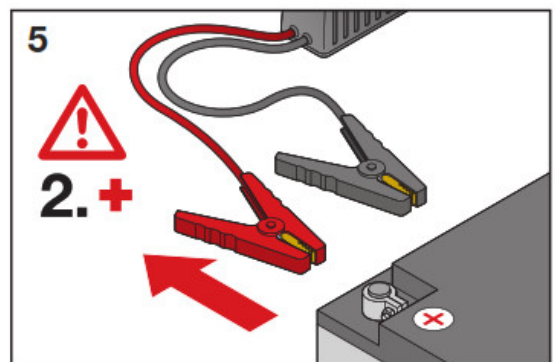
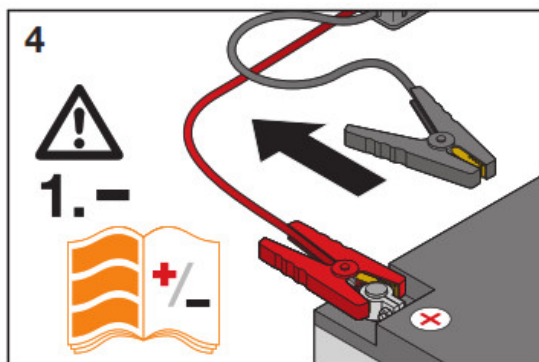
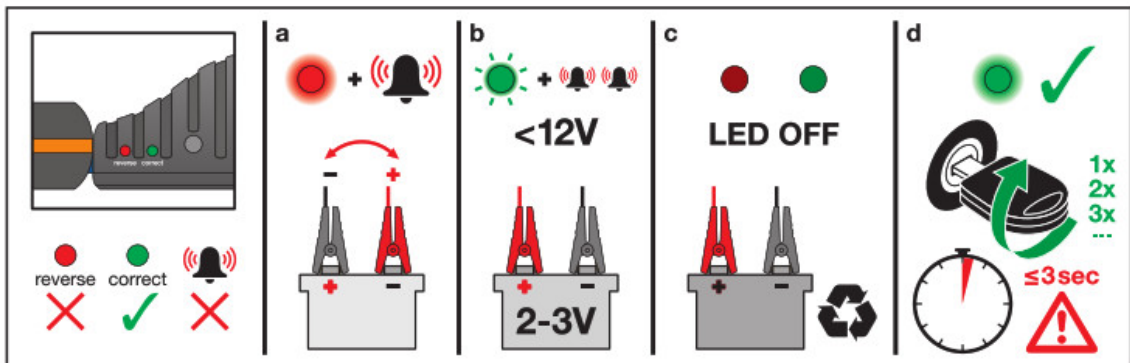
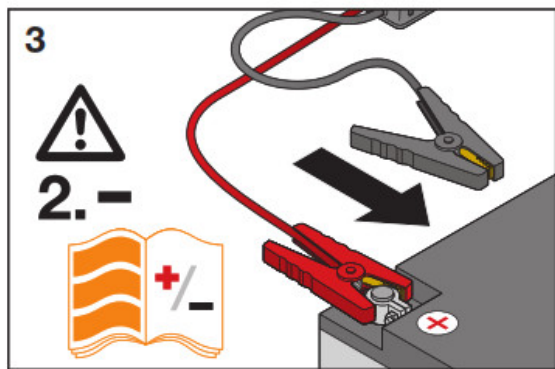
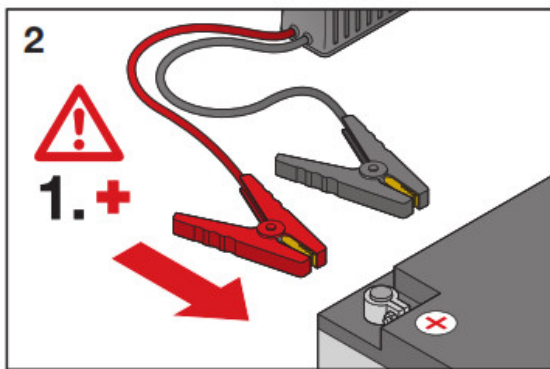


BATTERYstart 300









	Do not use in extreme heat.		Do not damage cables.
	Do not use it in extreme cold.		Do not use a damaged cable.

	No drinks/liquids.		Keep cables away from moving parts.
	No smoking/vaping.		Do not carry by cables.
	Keep away from children.		Risk of fire.
	Do not drop.		Risk of electric shock.
	Do not expose to moisture.		Risk of hazardous materials.
	Do not charge a frozen battery.		Use in a well-ventilated area.
	Do not touch clamps together.		Battery may emit fumes.
	Keep away from tools and jewelry.		Surrounding items may emit fumes.

Lithium Jumpstarter with powerbank function and LED light

This appliance is not intended for use by persons (including children) with reduced physical, sensory or mental capabilities, or lack of experience and knowledge unless they have been given supervision or instruction concerning the use of the appliance by a person responsible for their safety. Children should be supervised to ensure that they do not play with the appliance. For indoor use only. Charging only rechargeable Batteries. Disconnect the supply before making or breaking the connections to the battery. **WARNING:** Explosive gases. Prevent flames and sparks. Provide adequate ventilation during charging, the battery must be placed in a well-ventilated area.

WARNING: Use of unauthorized parts or failure to follow maintenance instructions may create a risk of electric shock or injury. Store the manual in a safe place.

www.osram.com/am-guarantee

RING Automotive Ltd,
LS12 6NA, UK



Refer to
instructions



Class 3
Insulated
Appliance



Eurasian
Conformity
mark



UK
Conformity
mark



EU
Conformity
mark



WEEE (Waste Electrical
and Electronic
Equipment Directive)



Not for use by children



Do not cover



Do not open

C10449059

G15095962

12.08.21

OSRAM GmbH
Nonnendammallee 44
13629 Berlin
Germany


www.osram.com

Contents

[1 Documents /
Resources](#)

[2 Related Posts](#)

Documents / Resources

	<p>OSRAM OBSL200 Lithium Jump Starter with Powerbank Function and LED Light [pdf] Ins truction Manual</p> <p>OBSL200 Lithium Jump Starter with Powerbank Function and LED Light, Lithium Jump Starter with Powerbank Function and LED Light</p>
---	---