



OSPREY AETHER Plus 100 Backpacking Pack Owner's Manual

[Home](#) » [OSPREY](#) » OSPREY AETHER Plus 100 Backpacking Pack Owner's Manual 



AETHER™ | ARIEL PLUS



AETHER PLUS 100



AETHER PLUS 85



AETHER PLUS 70



AETHER PLUS 60



ARIEL PLUS 85



ARIEL PLUS 70



ARIEL PLUS 60

Welcome to Osprey. We pride ourselves on creating the most functional, durable and innovative carrying products for your adventures. Please refer to this owner's manual for information on product features, use, maintenance, customer service and warranty.

Contents

1 OVERVIEW

2 AETHER PLUS 100

3 AETHER PLUS 85

4 AETHER PLUS 70

5 AETHER PLUS 60

6 ARIEL PLUS 85

7 ARIEL PLUS 70

8 ARIEL PLUS 60

9 CARRY

10 SIZING / FIT

11 ADJUSTING YOUR PACK

12 CUSTOM FIT-ON-THE-FLY HIPBELT

13 CUSTOM FIT-ON-THE-FLY SHOULDER STRAP

14 FEATURES

15 Documents / Resources

15.1 References

16 Related Posts

OVERVIEW



SHARED

1. Removable top lid converts to DayLid daypack
2. Included raincover made with PFC-free DWR and bluesign®-approved materials
3. Stow-on-the-Go trekking pole attachment
4. Floating top lid with lash points
5. Dual front panel zippered pockets for easy-access storage
6. Fabric reinforced front shove-it pocket
7. Large dual-access stretch mesh side water bottle pockets
8. Dual upper/lower side compression straps
9. Dual front panel compression straps with StraightJacket compression
10. Dual zippered hipbelt pockets
11. Dual ice axe loops with bungee tie-offs
12. Zippered sleeping bag compartment with removable divider
13. Removable sleeping pad straps
 - + Internal hydration reservoir sleeve

MAIN FABRIC bluesign® -approved 210D high-tenacity nylon, PFC-free DWR

ACCENT bluesign® -approved 210D high-tenacity nylon honeycomb contrast, PFC-free DWR

BOTTOM bluesign® -approved 210D high-tenacity nylon, PFC-free DWR

AETHER PLUS 100

MEN'S



SPECS	S/M	L/XL
Cubic Inches	5980	6102
Liters	98	100
Pounds	6.392	6.691
Kilograms	2.9	3.036
Inches	32 h x 17 w x 16 d	34 h x 17 w x 16 d
Centimeters	82 h x 42 w x 40 d	87 h x 42 w x 40 d

LOAD RANGE 40-70 lb | 18-32 kg

AETHER PLUS 85

MEN'S



SPECS	S/M	L/XL
Cubic Inches	5065	5187
Liters	83	85
Pounds	6.074	6.352
Kilograms	2.756	2.882
Inches	32 h x 16 w x 16 d	34 h x 16 w x 16 d
Centimeters	81 h x 41 w x 40 d	86 h x 41 w x 40 d

LOAD RANGE 30-60 lb | 14-27 kgg

AETHER PLUS 70

MEN'S



SPECS	S/M	L/XL
Cubic Inches	4150	4272
Liters	68	70
Pounds	5.609	6.171
Kilograms	2.545	2.8
Inches	31 h x 15 w x 14 d	33 h x 15 w x 15 d
Centimeters	79 h x 38 w x 36 d	84 h x 38 w x 36 d

LOAD RANGE 30-60 lb | 14-27 kgg

AETHER PLUS 60

MEN'S



SPECS	S/M	L/XL
Cubic Inches	3539	3661
Liters	58	60
Pounds	5.655	5.938
Kilograms	2.566	2.694
Inches	31 h x 15 w x 13 d	33 h x 15 w x 13 d
Centimeters	78 h x 37 w x 33 d	83 h x 37 w x 33 d

LOAD RANGE 30-60 lb | 14-27 kg

ARIEL PLUS 85

WOMEN'S



SPECS	XS/S	M/L
Cubic Inches	5065	5187
Liters	83	85
Pounds	5.816	6.076
Kilograms	2.639	2.757
Inches	30 h x 16 w x 15 d	32 h x 16 w x 15 d
Centimeters	76 h x 40 w x 38 d	81 h x 40 w x 38 d

LOAD RANGE 40-70 lb | 18-32 kg

ARIEL PLUS 70

WOMEN'S



SPECS	XS/S	M/L
Cubic Inches	4150	4272
Liters	68	70
Pounds	5.541	5.797
Kilograms	2.514	2.63
Inches	30 h x 15 w x 13 d	32 h x 15 w x 13 d
Centimeters	75 h x 38 w x 34 d	80 h x 38 w x 34 d

LOAD RANGE 30-60 lb | 14-27 kg

ARIEL PLUS 60

WOMEN'S



SPECS	XS/S	M/L
Cubic Inches	3539	3661
Liters	58	60
Pounds	5.417	5.649
Kilograms	2.458	2.563
Inches	29 h x 14 w x 13 d	31 h x 14 w x 13 d
Centimeters	74 h x 35 w x 33 d	79 h x 35 w x 33 d

LOAD RANGE 30-60 lb | 14-27 kg

CARRY



LIGHTWIRE SUSPENSION

- + 3.5 LightWire peripheral frame effectively transfers load to hipbelt.

AIRSCAPE BACKPANEL

- + Injection-molded, die-cut foam AirScape framesheet maintains comfortable back contact with ventilated airflow channels and maximum stability for carrying heavy loads.
- + Mesh-covered foam lumbar for supportive, lightweight, and comfortable contact surfaces.

HARNESS

- + Easily adjustable harness system for various torso lengths
- + Custom Fit-on-the-Fly Shoulder Straps included

CUSTOM FIT-ON-THE-FLY SHOULDER STRAP

- + Custom Fit-on-the-Fly Shoulder Straps allow for a precise shoulder wrap and fit.
- + Spacer mesh fabric provides a soft and comfortable contact surface.

CUSTOM FIT-ON-THE-FLY HIPBELT

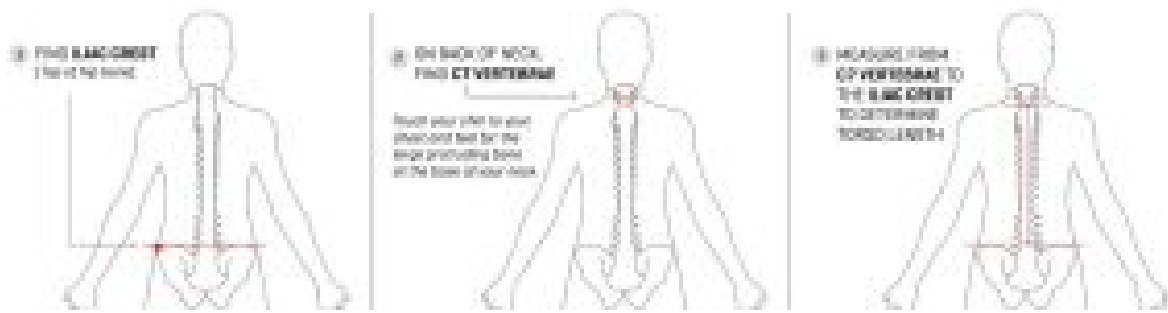
- + Extendable Custom Fit-on-the-Fly Hipbelt offers a precise fit for varying waist sizes.
- + Incremental length and angle adjustments allow for a fine-tuned fit
- + Crossbody ErgoPull hipbelt pulls weight into lumbar when hipbelt is tightened.

ENHANCED LOAD TRANSFER

- + The Custom Fit-on-the-Fly Hipbelt integrates the LightWire frame into the adjustment system—creating a better distribution of weight and, in turn, a better carry.

SIZING / FIT

HOW TO MEASURE YOUR BACK FOR YOUR PACK

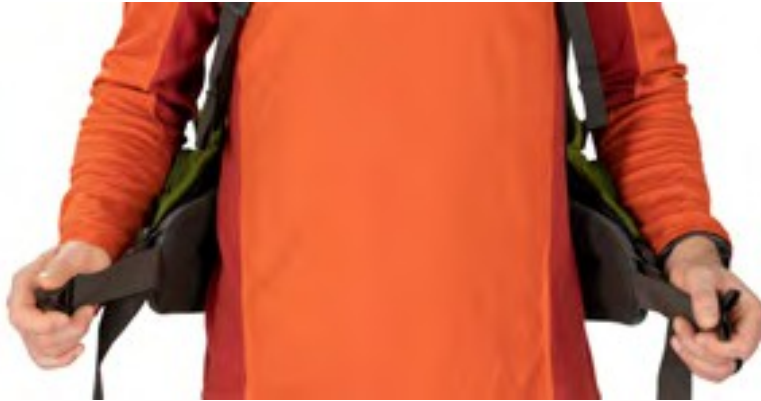


PACK FIT INSTRUCTIONS

1. POSITION THE PACK

Completely loosen the pack's hipbelt, harness and load-lifter straps. Load the pack with 10-20 lbs./ 4-9 kg. of gear.

Put the pack on and make sure the hipbelt is centered and rests over the hipbone. The hipbelt padding should sit halfway above/ below the hipbone.



2. BUCKLE HIPBELT

Buckle and tighten the hipbelt evenly using Osprey's cross-body ErgoPull.

The padding of the hipbelt should wrap around the hips with approximately 1-3 in./2.5-6 cm. of webbing between the buckle and the hipbelt when tightened.



3. HIPBELT ADJUSTMENT

If the hipbelt is too large and "tops out" or does not offer the preferred amount of coverage, the customer may need a different pack size, model or adjustment (Fit-On-The-Fly hipbelt imaged).



4. **TIGHTEN SHOULDER STRAP**

Tighten the shoulder harness straps by pulling them down and back.

5. **TIGHTEN LOAD LIFTERS**

Tightening the load lifters will pull the pack close to the body and help stabilize the load.

If the torso length on the pack is adjusted correctly, the load lifters will sit between a 30 to 60-degree angle and align naturally with the shoulder straps.



6. **CHECK TORSO LENGTH**

Locate the harness yoke – this is where the harness straps come together near the base of the user's neck.

Locate the C7 vertebra – the large protruding bone at the base of the neck. The yoke should be 1 in./2.5 cm. – 2 in./5 cm. below the C7 vertebra.



7. **TORSO LENGTH – HARNESS ADJUSTMENT**

If the torso length is too long or short, the customer may need a different pack size, model or an adjustment.

Consider making an adjustment if:

- Load lifters are angled below/above 30-60 degrees
- Yoke to C7 vertebra distance is more than 2 in./5 cm. or less than 1 in./2.5 cm.
- There is a gap between the harness and back of the shoulder



8. CHECK HARNESS FIT

The harness straps should wrap fully around the shoulders with no gaps between the pack and back.

The padded part of the shoulder straps should end at 2 in./5 cm. or more below the armpits without topping out.



9. HARNESS/SHOULDER STRAP ADJUSTMENT

If the harness is too small or large, but the torso length of the pack is correct, the customer may need a different pack size, model or adjustment (Fit-On-The-Fly shoulder strap imaged).



10. BUCKLE THE STERNUM STRAP

The sternum strap adjusted to approximately 2 in./5 cm. below the collarbone.



ADJUSTING YOUR PACK

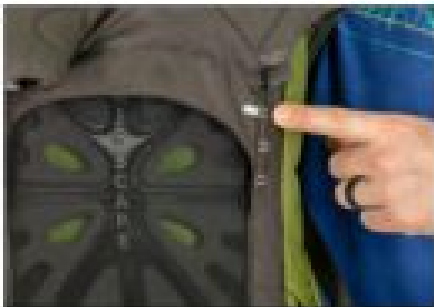


TORSO LENGTH – ADJUSTING THE HARNESS

Completely loosen the pack's load lifters and harness straps.

To lengthen the torso length:

1. While releasing the ladder locks, located on either side of the back panel directly above the lumbar, slide the harness up along the LightWire frame to the appropriate torso length.
2. It is easiest to do this one side at a time, sliding the harness with one ladder lock and then the other.
3. Use the white markings on the edge of the back panel as a guideline to align each side of the harness.



To shorten the torso length:

1. Slide the harness down along the LightWire frame to the appropriate torso length.
2. Use the white markings on the edge of the back panel as a guideline to align each side of the harness.
3. Tighten the webbing at the ladder locks, located on either side of the back panel directly above the lumbar, to tension.



When the pack is not in use, the harness will easily slide up and down the LightWire frame. However, when the pack is on-body, the ladder locks will engage the harness' webbing and the harness will adjust to the desired height.

CUSTOM FIT-ON-THE-FLY HIPBELT



The customizable hipbelt pad extends up to 6 in./15 cm. directly from the lumbar to accommodate different hip shapes and sizes and provide a fine-tuned fit.

To adjust the hipbelt:

Completely loosen the pack's hipbelt webbing.



1. Separate one of the pack's hipbelt wings from the padded hipbelt by disengaging the hook-and-loop closure.
2. With one hand, hold the pack's hipbelt wing. With the other hand, guide the padded hipbelt in/out from behind the padded lumbar to the desired position.
3. Press firmly to re-engage the hook-and-loop closure. While slight angle/height adjustments can be made when engaging the hipbelt wing, the white markings on the padded hipbelt should be used as the guideline.

NOTE: The rough "hook" of the pack's hipbelt wing should always be engaged to the soft "loop" of the padded hipbelt. If disengaged, it may rub and cause

abrasion to clothing

4. Repeat these steps on the other side. Extend the pads the same distance on both hipbelt wings so pack weight is distributed evenly.

CUSTOM FIT-ON-THE-FLY SHOULDER STRAP



A customizable strap extension allows for the perfect shoulder wrap.

To adjust the shoulder strap:

Completely loosen the pack harness' load lifter and shoulder strap webbing.

1. Start with one shoulder strap and separate the shoulder strap sleeve from the padded shoulder strap by disengaging the hook and loop closure.
2. Slide the padded strap in/out of the shoulder strap sleeve to desired length.
3. Use the white markings as a guideline and press firmly to re-engage the hook-and-loop closure.

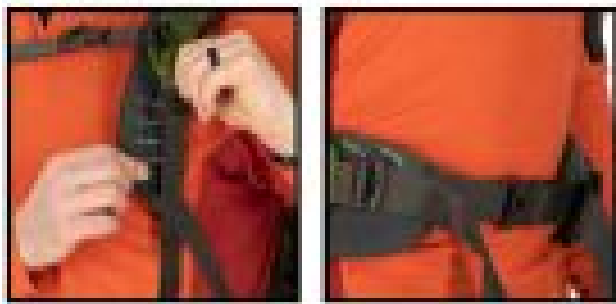
NOTE: The rough "hook" of the pack's shoulder strap sleeve should always be engaged to the soft "loop" of the padded shoulder strap. If disengaged, it may rub and cause abrasion to clothing.



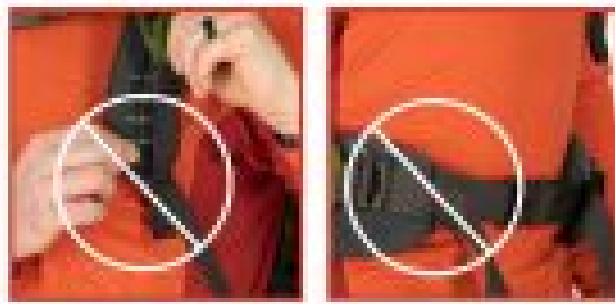
4. Repeat these steps on the other side. Extend the pads the same distance on both shoulder straps so pack weight is distributed evenly.



CORRECT:



INCORRECT:



NOTE: The webbing keeper, located by the ladder lock at the end of the padded hipbelt wings and shoulder strap, aligns the webbing before it goes into the ladder lock. The webbing coming out of the ladder lock should not be threaded through these keepers as it will create an incorrect angle, inhibiting the straps from tightening when pulled while putting on and fitting the pack.

FEATURES

RAINCOVER

1. Locate raincover icon on the toplid.
2. Remove raincover from compartment and slip it over the top and bottom of the pack.
3. Tighten the cord lock at the bottom of raincover to tension raincover into place.
4. To detach raincover, unfasten toggle from cord loop.

Tip: To prevent mildew, allow raincover to dry entirely before storing.



DUAL ICE TOOL ATTACHMENT

The ice tool loops and bungee tieoffs provide secure tool attachment.

A Slide the tool shaft through the top of the ice tool loop and flip the shaft up toward the top of the pack.

B Loosen the bungee cord lock and route the tool handle through the bungee. Tighten the cord lock nesting it into the Y-clip to secure the tool into place.

C Reverse to remove.



SLEEPING PAD STRAPS

Removable sleeping pad straps for external attachment.

A Unclip the two sleeping pad strap buckles.

B Remove the webbing from the triglide at the base of the pack.

C Reverse to reattach.



INTERNAL RESERVOIR SLEEVE

Place reservoir inside sleeve to help ensure proper pack weight distribution. Clip reservoir to buckled loop to keep upright.



REMOVABLE TOP LID AND DAYLID DAYPACK



To remove top lid, unclip the two buckles on the front of the pack and the buckles on either side of the load lifter straps and unthread webbing from keeper loops.



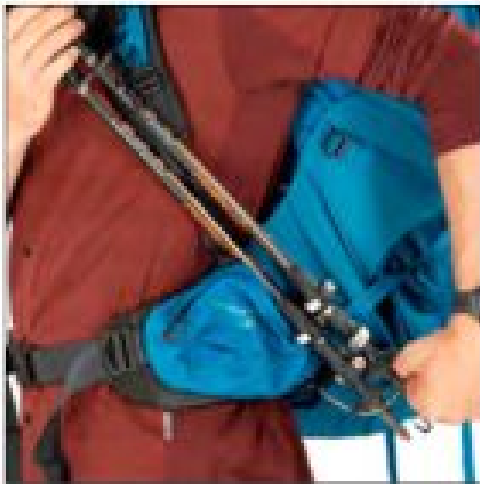
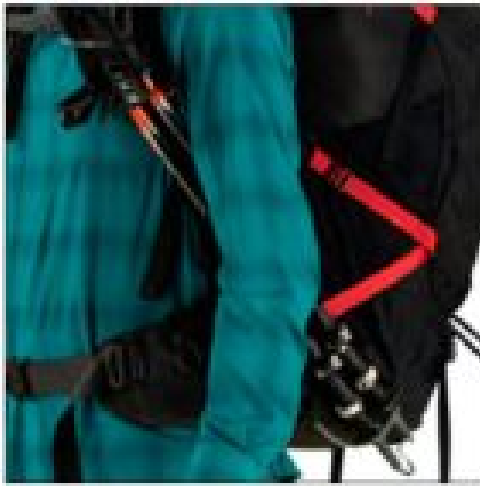
To convert the top lid into the DayLid unzip the U-shape zippered compartment and pull out harness straps. Attach the buckle on the end of the DayLid harness straps to buckles adjacent to standard top lid buckles. Reverse the process to return to normal top lid function and reattach.



FLAPJACKET COVER

When using pack without top lid, unfold FlapJacket buckles and attach to the front vertical compression straps.





STOW-ON-THE-GO TREKKING POLE ATTACHMENT

Osprey's Stow-on the-Go trekking pole attachment is designed to quickly stash and carry trekking poles without taking off the pack.

1. Adjust the trekking poles to their minimum length. (optional)
2. Locate the elasticized loop on the lower left side of pack. While pulling the loop out from the pack, insert the basket end of the trekking poles into the loop.
3. On the left harness strap, locate the trekking pole icon. Pull up on the cord to open, place pole handles in the loop and tighten with the cord lock to secure.
4. Reverse these steps to remove.



SLEEPING BAG COMPARTMENT

Lower zippered compartment for dedicated sleeping bag storage. Detach the divider for unimpeded access to pack interior. Unthread the divider webbing from the triglide buckle, and reverse to reattach.



DUAL UPPER AND LOWER SIDE COMPRESSION STRAPS

Upper and lower compression straps provide added stability when the pack is not full or offer additional attachment points for carrying gear on the outside of the pack.



DUAL STRAIGHTJACKET COMPRESSION STRAPS

Dual front panel compression straps help stabilize loads. When minimal pack volume is needed, the compression straps can be attached to the additional StraightJacket.



ZIPPERED HIPBELT POCKETS



DUAL MESH SIDE POCKETS



**LARGE FRONT PANEL ZIP ACCESS
TO MAIN COMPARTMENT**




**FABRIC REINFORCED FRONT
SHOVE-IT POCKET**



**FLOATING TOP LID WITH
LASH POINTS**

For more information on this product and others, pack care, how to pack your pack, our lifetime guarantee, or to contact Osprey Customer Service, visit ospreypacks.com.

Documents / Resources

	<p>OSPREY AETHER Plus 100 Backpacking Pack [pdf] Owner's Manual AETHER PLUS 100, AETHER PLUS 85, AETHER PLUS 70, AETHER PLUS 60, ARIEL PLUS 85, ARIEL PLUS 70, ARIEL PLUS 60, AETHER Plus 100 Backpacking Pack, Backpacking Pack, Pack</p>
---	---

References

-  osprey.com
-  ospreypacks.com

Manuals+,