



osily OSEF Mixed Flow Fan with Timer User Manual

[Home](#) » [osily](#) » osily OSEF Mixed Flow Fan with Timer User Manual 

Contents

- [1 osily OSEF Mixed Flow Fan with Timer](#)
- [2 Product Information](#)
- [3 FAQ](#)
- [4 DELIVERY SET](#)
- [5 BRIEF DESCRIPTION](#)
- [6 OPERATION GUIDELINES](#)
- [7 MOUNTING](#)
- [8 CONTROL LOGIC](#)
- [9 MAINTENANCE](#)
- [10 TROUBLESHOOTING](#)
- [11 STORAGE AND TRANSPORTATION](#)
- [REGULATIONS](#)
- [12 MANUFACTURER'S WARRANTY](#)
- [13 Documents / Resources](#)
 - [13.1 References](#)



osily OSEF Mixed Flow Fan with Timer



Product Information

Specifications

- Power supply: 220-240V/50Hz, 220V/60Hz
- Connection to 150mm air ducts

Brief Description

The centrifugal inline fan is designed for supply or exhaust ventilation of premises. It is an axial mixed-flow fan that is suitable for connection to 150mm air ducts.

Operation Guidelines

The fan operates with a power supply of 220-240V/50Hz or 220V/60Hz. To comply with the ErP 2018 regulation, a local demand controller and speed controller must be used.

Mounting

Terminal Designations:

- L1: Minimum speed terminal
- L2: Maximum speed terminal
- QF: Automatic circuit breaker
- S: External speed switch
- ST: External switch (e.g., light switch)
- X: Input terminal block

Control Logic

The fan rotation speed can be controlled by voltage or thyristor controllers. The speed controller needs to be purchased separately.

When adjusting the voltage, ensure there is no unusual noise or vibration at reduced motor speed. The motor current may exceed the rated current during voltage regulation. The fan is equipped with a thermal switch that does not self-reset. To reset the thermal relay, switch off the power supply, find and eliminate the cause of overheating, and make sure the motor has cooled down to operating temperature before switching on the power supply.

In case of overheating, replace the fan. The OSEF150-WW fan is equipped with a speed switch. The OSEF150-WWT fan starts running after the external switch supplies a control signal to the LT input terminal (e.g., during turning the light on). After removal of the control signal, the fan continues to run within the set time (adjustable with the turn-off delay timer from 2 to 30 minutes).

To adjust the fan turn-off delay time, rotate the control knob T clockwise to increase and counter-clockwise to decrease the turn-off delay time. The fan delivery set includes a specially designed plastic screwdriver for adjustment of the fan parameters. Use exclusively the delivered plastic screwdriver to adjust the turn-off delay time. Do not use a metal screwdriver, knife, etc. for adjustment operations to avoid damaging the circuit board.

Maintenance

No specific maintenance instructions are provided in the manual. However, it is recommended to regularly clean the fan and ensure proper ventilation in the premises to maintain optimal performance.

Troubleshooting

No troubleshooting instructions are provided in the manual. If you encounter any issues with the fan, refer to the manufacturer's warranty or contact their customer support for assistance.

Storage and Transportation Regulations

No specific storage and transportation regulations are provided in the manual. However, it is recommended to store and transport the fan in a safe and secure manner to prevent any damage.

Manufacturer's Warranty

The manufacturer provides a warranty for the product. Please refer to the warranty documentation included with the fan for more information.

FAQ

1. Can I use a timer to supply power to the fan?

No, the fan must not be supplied through an external switching device, such as a timer. Ensure that the unit is switched off from the supply mains before removing the guard.

2. Can I dispose of the fan as regular domestic waste?

No, the product must be disposed of separately at the end of its service life. Do not dispose of the unit as unsorted domestic waste.

This user's manual is a main operating document intended for technical, maintenance, and operating staff. The manual contains information about purpose, technical details, operating principle, design, and installation of the OSEF unit and all its modifications.

Technical and maintenance staff must have theoretical and practical training in the field of ventilation systems and should be able to work in accordance with workplace safety rules as well as construction norms and standards applicable in the territory of the country.

Connection to the mains must be made through a disconnecting device, which is integrated into the fixed wiring system in accordance with the wiring rules for design of electrical units, and has a contact separation in all poles that allows for full disconnection under overvoltage category III conditions.

- This unit is not intended for use by persons (including children) with reduced physical, sensory or mental capabilities, or lack of experience and knowledge, unless they have been given supervision or instruction concerning use of the unit by a person responsible for their safety.
- Children should be supervised to ensure that they do not play with the unit.
- This appliance can be used by children aged from 8 years and above and persons with reduced physical, sensory or mental capabilities or lack of experience and knowledge if they have been given supervision or instruction concerning use of the appliance in a safe way and understand the hazards involved.
- Cleaning and user maintenance shall not be made by children without supervision.
- Children shall not play with the appliance.
- **CAUTION:** In order to avoid a safety hazard due to inadvertent resetting of the thermal cut-out, this unit must not be supplied through an external switching device, such as a timer, or connected to a circuit that is regularly switched on and off by the utility. Ensure that the unit is switched off from the supply mains before removing the guard.
- Precautions must be taken to avoid the back-flow of gases into the room from the open flue of gas or other fuel-burning appliances. If the supply cord is damaged, it must be replaced by the manufacturer, its service agent, or similarly qualified persons in order to avoid a safety hazard.
- All operations described in this manual must be performed by qualified personnel only, properly trained and qualified to install, make electrical connections and maintain ventilation units. Do not attempt to install the product, connect it to the mains, or perform maintenance yourself.
- This is unsafe and impossible without special knowledge. Disconnect the power supply prior to any operations with the unit. All user's manual requirements as well as the provisions of all the applicable local and national construction, electrical, and technical norms and standards must be observed when installing and operating the unit.
- Disconnect the unit from the power supply prior to any connection, servicing, maintenance, and repair operations.
- Only qualified electricians with a work permit for electrical units up to 1000 V are allowed for installation. The present user's manual should be carefully read before beginning works.
- Check the unit for any visible damage of the impeller, the casing, and the grille before starting installation. The casing internals must be free of any foreign objects that can damage the impeller blades.
- While mounting the unit, avoid compression of the casing!
- Deformation of the casing may result in motor jam and excessive noise
- Misuse of the unit and any unauthorised modifications are not allowed.
- Do not expose the unit to adverse atmospheric agents (rain, sun, etc.).
- Transported air must not contain any dust or other solid impurities, sticky substances, or fibrous materials.
- Do not use the unit in a hazardous or explosive environment containing spirits, gasoline, insecticides, etc.
- Do not close or block the intake or extract vents in order to ensure the efficient air flow.
- Do not sit on the unit and do not put objects on it.
- The information in this user's manual was correct at the time of the document's preparation.
- The Company reserves the right to modify the technical characteristics, design, or configuration of its products at any time in order to incorporate the latest technological developments.

- Never touch the unit with wet or damp hands.
- Never touch the unit when barefoot.
- BEFORE INSTALLING ADDITIONAL EXTERNAL DEVICES, READ THE
- RELEVANT USER MANUALS
- THE PRODUCT MUST BE DISPOSED SEPARATELY AT THE END OF ITS SERVICE LIFE.
- DO NOT DISPOSE THE UNIT AS UNSORTED DOMESTIC WASTE.

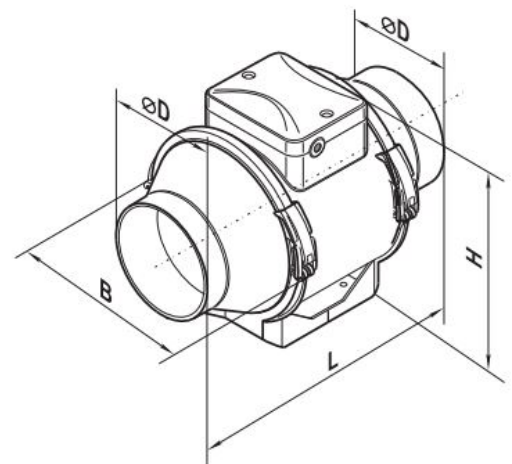
DELIVERY SET

- Fan 1 pc.
- Screws and dowels 4 pcs
- Plastic screwdriver (all fans with a timer) 1 pc
- User's manual 1 pc
- Packing box 1pc

BRIEF DESCRIPTION

The unit described herein is an axial mixed-flow fan for supply or exhaust ventilation of premises. The fan is designed for connection to 150mm air ducts.

Ø D	B	H	L
146	223	250	295



OPERATION GUIDELINES

- The fan is rated for connection to single-phase AC 220-240 V/50 Hz or 220V/60 Hz power mains.
- The unit is rated for continuous operation.
- The arrow on the fan casing must match the air direction in the system.
- Ingress protection rating against access to hazardous parts and water ingress is IPX4.
- The unit is rated as a Class II electrical appliance.
- The fan is rated for operation at the ambient air temperature from +1 °C up to +40 °C.

Power supply [V/Hz]	Transported air temperature [°C]
220-240/50	-25...+60
220/60	-25...+40

To comply with the ErP 2018 regulation, a local demand controller and speed controller must be used.

MOUNTING

The fan is designed for horizontal or vertical installation on the floor, on the wall or on the ceiling (Fig. 1). The fan can be installed independently or as part of a set with parallel or in-series connection (Fig. 2).

To be installed on the intake spigot side:

- 1 m long air duct in case of horizontal fan installation
- ventilation hood in case of vertical fan installation
- The exhaust spigot must always be connected to the air duct.
- The fan mounting steps are shown in Fig. 3-10 and 13-18.
- The wiring diagrams are shown in Fig. 11-12.

Terminal designations:

- L1: minimum speed terminal
- L2: maximum speed terminal
- QF: automatic circuit breaker
- S: external speed switch
- ST: external switch (for example, light switch)
- X: input terminal block

CONTROL LOGIC

- It is possible to control the fan rotation speed without options by voltage, as well as by thyristor controllers.
- The speed controller is purchased separately. **Warning!**
- When adjusting the voltage, make sure there is no unusual noise or vibration at reduced motor speed.
- The motor current may exceed the rated current during voltage regulation.
- The fan is equipped with a thermal switch with no self-reset.
- To reset the thermal relay, switch off the power supply.
- Find and eliminate the cause of overheating.
- Make sure the motor has cooled down to operating temperature.
- Switch on the power supply.

Caution!

In case of overheating, replace the fan.

The OSEF150-WW fan is equipped with a speed switch (Fig. 20).

- The OSEF150-WWT fan starts running after the external switch supplies control signal to the LT input terminal (for example, during turning the light on).
- After removal of the control signal the fan continues to run within the set time (adjustable with the turn-off delay timer from 2 to 30 minutes).
- To adjust the fan turn-off delay time, rotate the control knob T clockwise to increase and counter-clockwise to

decrease the turn-off delay time respectively (Fig. 19).

- **Warning!** The timer circuit is under mains voltage. Disconnect the fan from power supply prior to any adjustment operations. The fan delivery set includes a specially designed plastic screwdriver for adjustment of the fan parameters. Use exclusively the delivered plastic screwdriver to adjust the turn-off delay time. Do not use a metal screwdriver, knife, etc. for adjustment operations not to damage the circuit board.

MAINTENANCE

- Clean the fan surfaces of dirt and dust each 6 months (Fig. 21-27).
- Disconnect the fan from power supply prior to any maintenance operations.
- For cleaning the fan use a soft cloth or a brush wetted in a mild detergent solution.
- Avoid water dripping on the electric components (Fig. 26)!
- Wipe the fan surfaces dry after cleaning.

TROUBLESHOOTING

Problem	Possible reasons	Troubleshooting
When the unit is connected to power mains, the fan does not rotate and does not respond to any controls.	No power supply.	Make sure the power supply line is connected correctly, otherwise troubleshoot the connection error.
	Internal connection fault.	Contact the Seller.
Low air flow.	The ventilation system is clogged.	Clean the ventilation system.
Increased noise, vibration.	The impeller is clogged.	Clean the impeller.
	The fan is not secured well or is not mounted properly.	Troubleshoot the installation error.
	The ventilation system is clogged.	Clean the ventilation system.

STORAGE AND TRANSPORTATION REGULATIONS

- Store the unit in the manufacturer's original packaging box in a dry closed ventilated premise with temperature range from +5 °C to +40 °C and relative humidity up to 70 %,
- Storage environment must not contain aggressive vapors and chemical mixtures provoking corrosion, insulation, and sealing deformation.
- Use suitable hoist machinery for handling and storage operations to prevent possible damage to the unit.
- Follow the handling requirements applicable for the particular type of cargo.
- The unit can be carried in the original packaging by any mode of transport provided proper protection against precipitation and mechanical damage. The unit must be transported only in the working position.
- Avoid sharp blows, scratches, or rough handling during loading and unloading.
- Prior to the initial power-up after transportation at low temperatures, allow the unit to warm up at operating temperature for at least 3-4 hours.

MANUFACTURER'S WARRANTY

The product is in compliance with EU norms and standards on low voltage guidelines and electromagnetic compatibility. We hereby declare that the product complies with the provisions of Electromagnetic Compatibility

(EMC) Directive 2014/30/EU of the European Parliament and of the Council, Low Voltage Directive (LVD) 2014/35/EU of the European Parliament and of the Council and CE-marking Council Directive 93/68/EEC. This certificate is issued following test carried out on samples of the product referred to above. The manufacturer hereby warrants normal operation of the unit for 24 months after the retail sale date provided the user's observance of the transportation, storage, installation, and operation regulations. Should any malfunctions occur in the course of the unit operation through the Manufacturer's fault during the guaranteed period of operation, the user is entitled to get all the faults eliminated by the manufacturer by means of warranty repair at the factory free of charge. The warranty repair includes work specific to elimination of faults in the unit operation to ensure its intended use by the user within the guaranteed period of operation. The faults are eliminated by means of replacement or repair of the unit components or a specific part of such unit component.

The warranty repair does not include:

- routine technical maintenance
- unit installation/dismantling
- unit setup

To benefit from warranty repair, the user must provide the unit, the user's manual with the purchase date stamp, and the payment paperwork certifying the purchase. The unit model must comply with the one stated in the user's manual. Contact the Seller for warranty service.

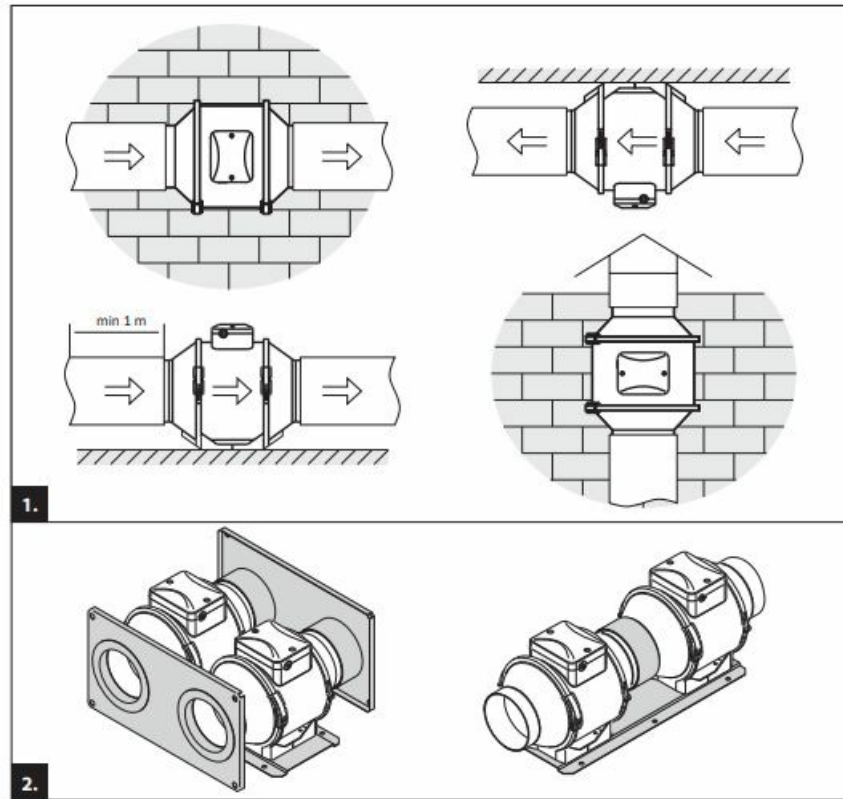
The manufacturer's warranty does not apply to the following cases:

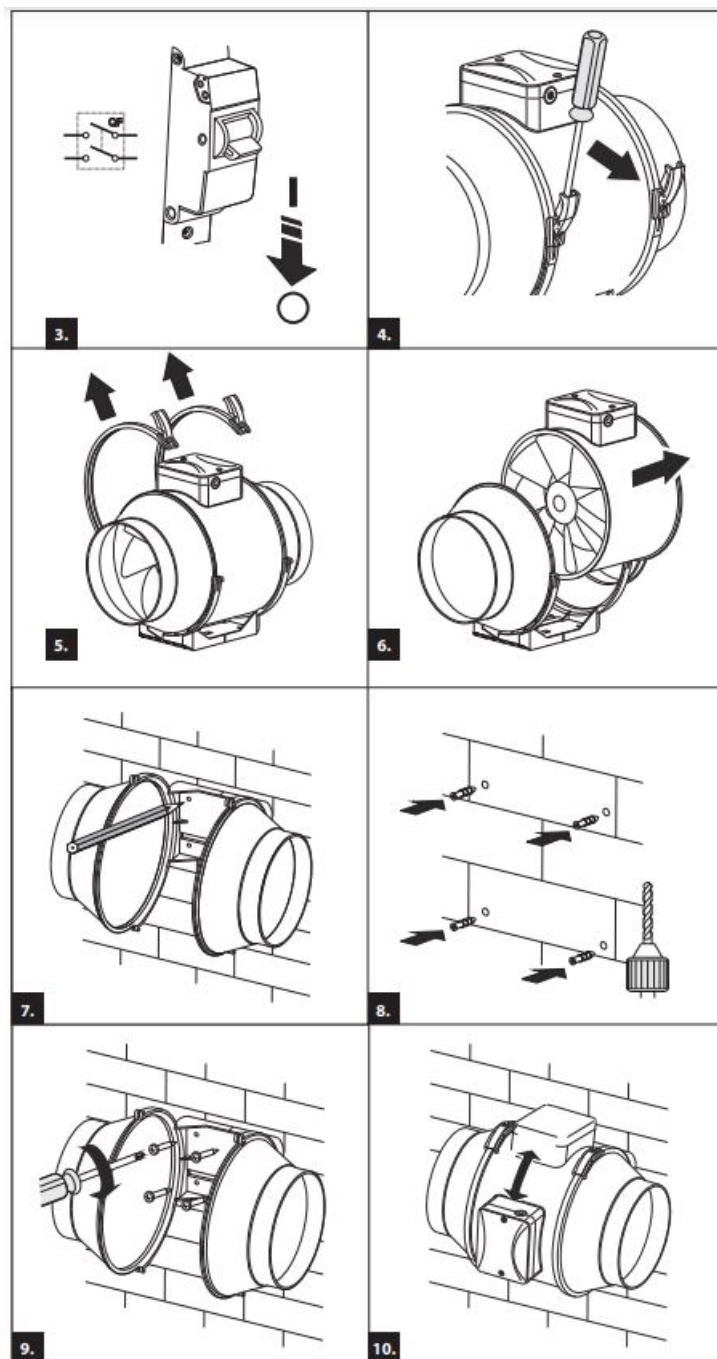
- User's failure to submit the unit with the entire delivery package as stated in the user's manual including submission with missing component parts previously dismantled by the user.
- Mismatch of the unit model and the brand name with the information stated on the unit packaging and in the user's manual.
- User's failure to ensure timely technical maintenance of the unit.
- External damage to the unit casing (excluding external modifications as required for installation) and internal components caused by the user.
- Redesign or engineering changes to the unit.
- Replacement and use of any assemblies, parts and components not approved by the manufacturer.
- Unit misuse.
- Violation of the unit installation regulations by the user.
- Violation of the unit control regulations by the user.
- Unit connection to power mains with a voltage different from the one stated in the user's manual.
- Unit breakdown due to voltage surges in power mains.
- Discretionary repair of the unit by the user.
- Unit repair by any persons without the manufacturer's authorization.
- Expiration of the unit warranty period.
- Violation of the unit transportation regulations by the user.
- Violation of the unit storage regulations by the user.
- Wrongful actions against the unit committed by third parties.
- Unit breakdown due to circumstances of insuperable force (fire, flood, earthquake, war, hostilities of any kind, blockades).
- Missing seals if provided by the user's manual.
- Failure to submit the user's manual with the unit purchase date stamp.

- Missing payment paperwork certifying the unit purchase.

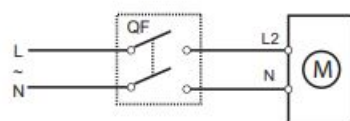
FOLLOWING THE REGULATIONS STIPULATED HEREIN WILL ENSURE A LONG AND TROUBLE-FREE OPERATION OF THE UNIT.

USER'S WARRANTY CLAIMS SHALL BE SUBJECT TO REVIEW ONLY UPON PRESENTATION OF THE UNIT, THE PAYMENT DOCUMENT AND THE USER'S MANUAL WITH THE PURCHASE DATE STAMP.

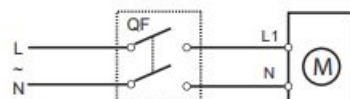




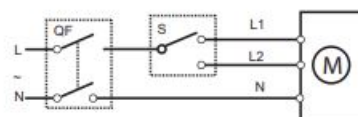
OSEF150-WW



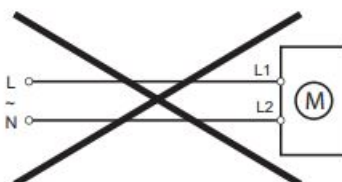
MAX

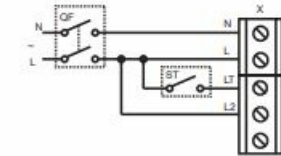


MIN

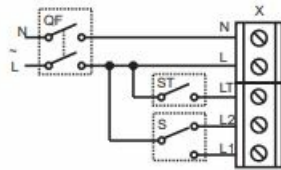


MAX / MIN

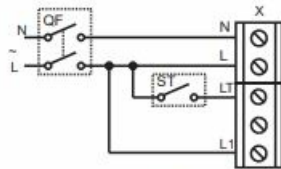




MAX

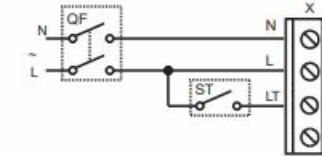


MAX / MIN

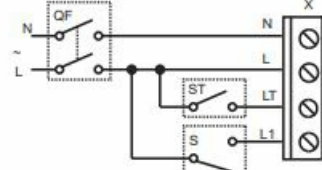


MIN

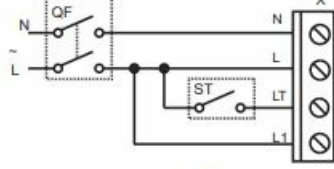
Terminal box for 5 contacts



MAX

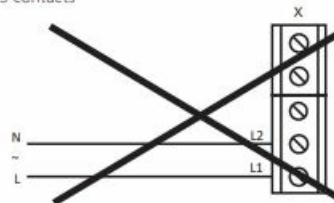


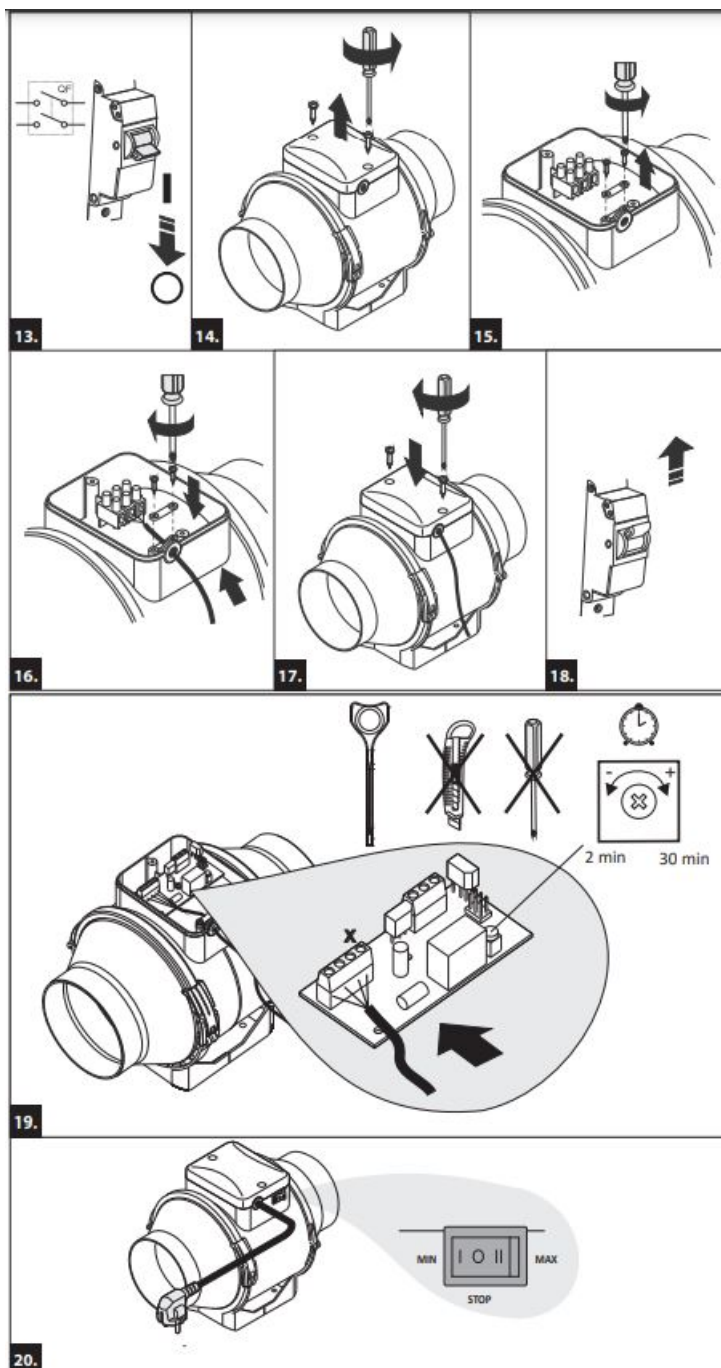
MAX / MIN

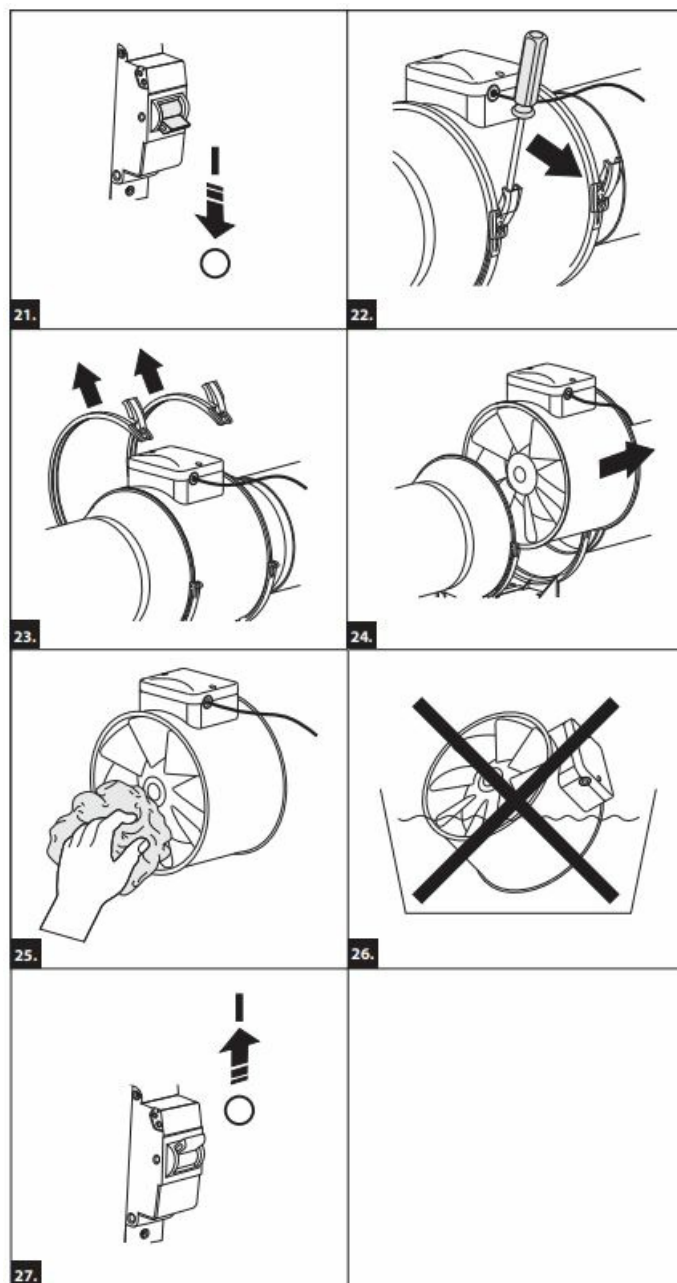


MIN

Terminal box for 4 contacts







Approval mark

Sold
(name and stamp of the seller)

Manufacturing date

Sales date

Documents / Resources

	<p>osily OSEF Mixed Flow Fan with Timer [pdf] User Manual</p> <p>OSEF, OSEF Mixed Flow Fan with Timer, Mixed Flow Fan with Timer, Flow Fan with Timer, Fan with Timer, Timer</p>
---	--

References

- [User Manual](#)