



Swift360 S

**Degree Rotating
Child Seat**



Osann Swift360 S Degree Rotating Child Seat Instruction Manual

[Home](#) » [osann](#) » Osann Swift360 S Degree Rotating Child Seat Instruction Manual 

Contents

- [1 Osann Swift360 S Degree Rotating Child Seat](#)
- [2 PRODUCT INFORMATION](#)
- [3 SEAT PARTS](#)
- [4 USING THE CHILD CAR SEAT](#)
- [5 CLEANING](#)
- [6 MAINTENANCE](#)
- [7 INSTALLATION OF THE CHILD CAR SEAT](#)
- [8 MORE INFORMATION](#)
- [9 FAQ](#)
- [10 Documents / Resources](#)
 - [10.1 References](#)
- [11 Related Posts](#)



Osann Swift360 S Degree Rotating Child Seat



PRODUCT INFORMATION

Many thanks for choosing our Swift360 S child car seat. If you need help with this product, please contact our customer service.

USE

- This product is suitable for children 76 to 150 cm in height.
- Rear-facing installation for children 76 to 105 cm in height is carried out using the Isofix connectors and the top tether strap. The child is strapped in with the 5-point belt on the child car seat.
- Forward-facing installation for children 76 to 105 cm in height and a minimum age of 15 months is carried out using the Isofix connectors and the top tether strap. The child is strapped in with the 5-point belt on the child car seat.
- Forward-facing installation for children 100 to 150 cm in height is carried out using the Isofix connectors. The top tether strap is not needed in this height range. The child is strapped in with the 3-point seat belt in the car.

IMPORTANT

DO NOT USE THE CHILD CAR SEAT FACING IN THE DIRECTION OF TRAVEL UNTIL THE CHILD HAS REACHED THE AGE OF 15 MONTHS.

EXTREME DANGER

We recommend installing the child car seat on the rear seat of the vehicle. DO NOT attach the child car seat for

rear-facing use for children 76 to 105 cm in height on a front seat where there is an airbag. It may be used on the front seat if the airbag can be deactivated. Please refer to the vehicle manual for more information about this.

PLEASE NOTE

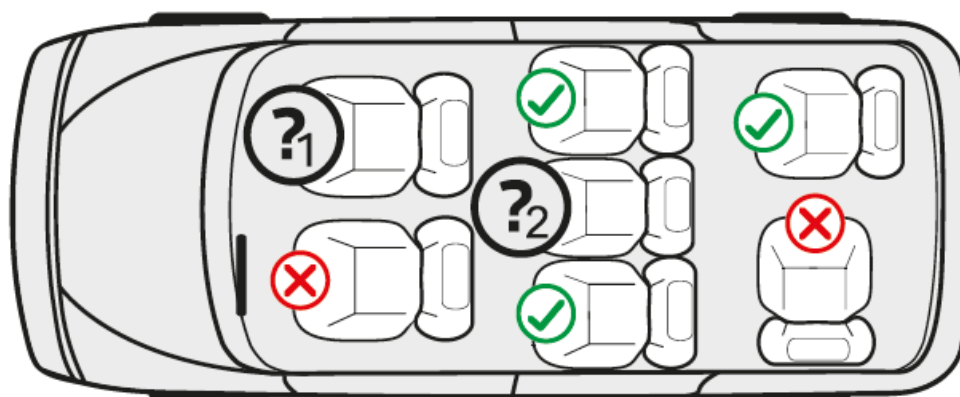
NOTE (76–105 cm):

This is an i-Size child restraint system. It is approved under Regulation No. 129 for use on “i-Size compatible” vehicle seats as specified by the vehicle manufacturer in the vehicle manual. In cases of doubt, please contact the manufacturer of the child restraint system or the dealer. The child restraint system can be used on all Isofix seats as long as there is also an attachment hook for the top tether.

NOTE (100–150 cm):

This is an optimised i-Size children’s booster seat. It is approved under Regulation No. 129 for use primarily on “i-Size vehicle seats” as specified by vehicle manufacturers in the vehicle manual. If in doubt, contact either the manufacturer of the extended child restraint system or the dealer. The optimised i-Size booster seat can also be used on all seats in the “universal” category, as long as this does not conflict with the vehicle interior.

If you have any doubts, please contact the car seat manufacturer or the dealer.



1. & 2.:

76-105 cm: Only if Isofix connectors and a fastening hook for the top tether are available. For rear-facing use additionally only if the airbag can be deactivated (1).

100-150 cm: Only if Isofix connectors and a 3-point belt according to ECE R16 are available. Securing the child only with a 2-point belt is not approved. Installation without Isofix connectors is also not approved.

The following table provides information about the fastening devices and methods:

Height range	Installation direction	Installation	Type	Child safety device
76–105 cm	Rearfacing	Isofix connectors & top tether	i-Size	5-point seatbelt on the child seat
76–105 cm	Forwardfacing	Isofix connectors & top tether	i-Size	5-point seatbelt on the child seat
100–150 cm	Forwardfacing	Isofix connectors & 3-point car seat belt	i-Size booster seat	3-point car seat belt

WARNING

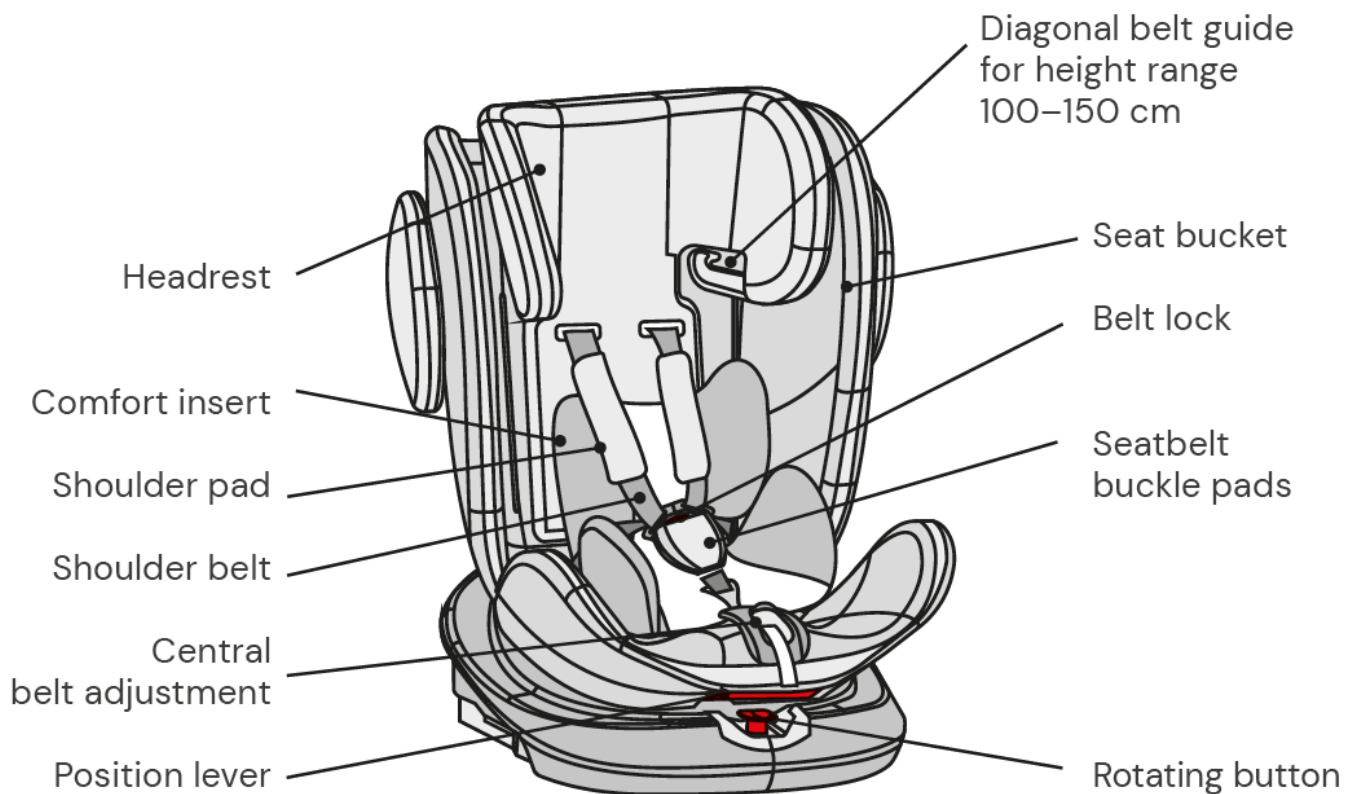
- Please read through these instructions carefully before use in order to guarantee the safety of your child. Retain the instructions. Non-compliance with the instructions in this manual may result in serious injuries to your child.
- The child seat can only be used with its own 5-point belt system for children who weigh under 18 kg and are less than 105 cm in height.
- The child seat CANNOT be used with its own 5-point belt system for children who weigh over 18 kg or are taller than 105 cm.
- The child seat can be installed rear-facing or forward-facing with the Isofix connectors and the top tether strap. Important: Do not install the child car seat in a forward-facing position until the child is at least 15 months old.
- For Isofix installation: Be sure to read the car manufacturer's manual.
- Do not use load-bearing contact points other than those described in the instructions and indicated in the child restraint system.
- Do not use this child car seat at home. It has been designed exclusively for use in a car.
- Do not leave your child unsupervised in the seat at any time.
- Do not place the rear-facing child car seat on the front seat with an activated airbag. This could lead to serious injuries or death.
- The child seat must be replaced if it is exposed to heavy impact in an accident.
- For safety reasons, the child car seat must be secured in the vehicle even when there is no child sitting in the child car seat.
- Always make sure that all straps that attach the child car seat to the vehicle are secure and that all belts that restrain the child are adjusted to fit the child's body. Ensure that the belts are not twisted.
- Items of luggage and other objects that could cause injury in the event of a collision must be properly secured.
- The rigid elements and plastic parts of a child restraint system must be positioned and installed so that they cannot become jammed by a movable seat or a vehicle door.
- It is important that belts that sit low hold the child's pelvis firmly in place. Your child should always be fastened in to stop them falling out.
- It is dangerous to make changes or additions to the product without approval from the responsible authority. Non-compliance with the installation instructions provided by the manufacturer of the child restraint system may

also present risks to the safety of

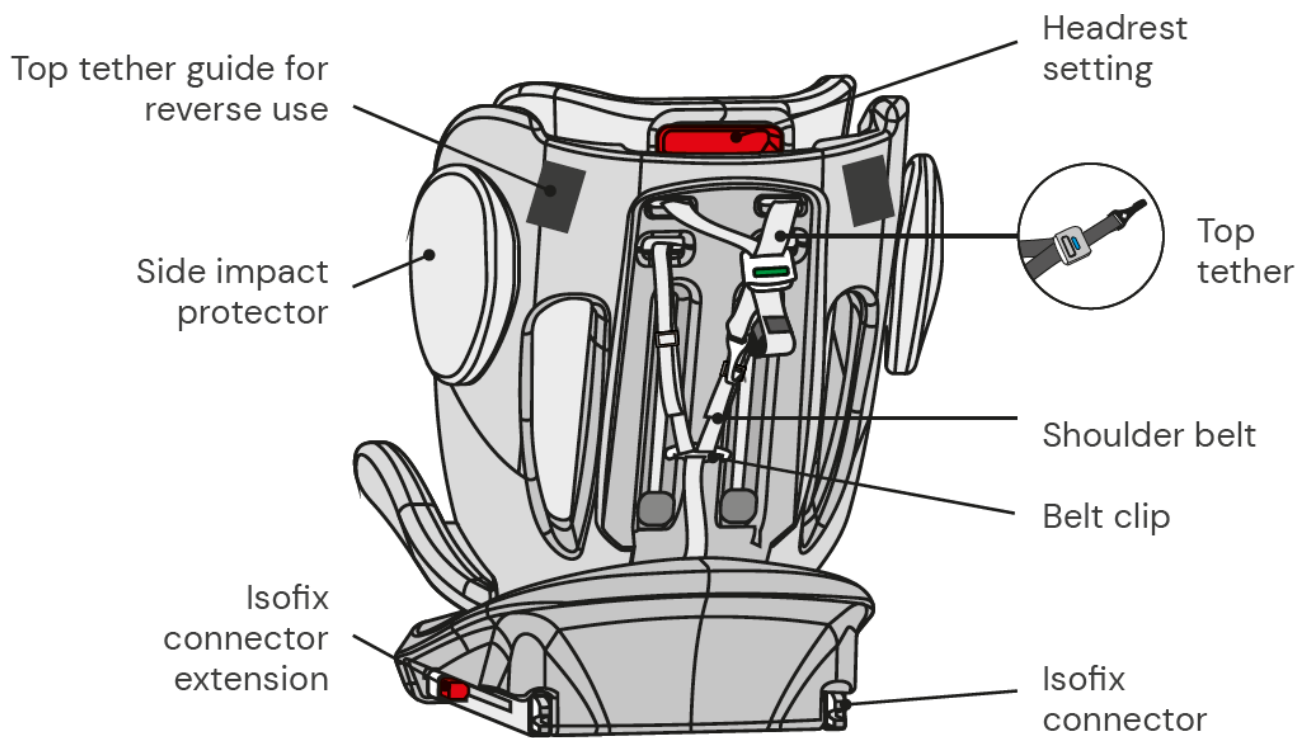
- your child.
- This child seat is designed for children with a maximum height of 150 cm. Never overload the child seat by transporting more than one child or additional loads in it.
- The child restraint system must not be used without the seat cover.
- The seat cover must not be replaced by a cover other than that recommended by the manufacturer, as this seat cover is an important component of the restraint system.

SEAT PARTS

Front view



Rear view



USING THE CHILD CAR SEAT

Setting the child car seat tilt angle

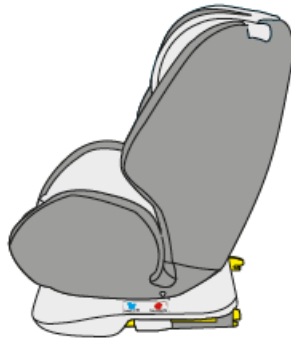
- Operate the position lever on the lower front of the seat bucket with one hand.
- Hold the seat bucket with the other hand and adjust the angle.



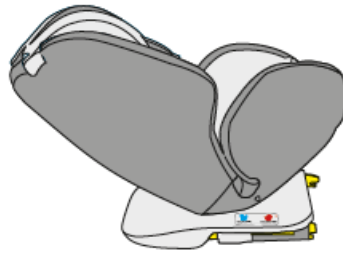
(Sample illustration)

The following seat positions are possible:

- (Please see the label on the child car seat) Rear-facing,
- height 76–105 cm: 1 position (5+R)
- Forward-facing, height 76–105 cm, min. 15 months: 5 positions (1 to 5)
- Forward facing, height: 100–150 cm: 1 position (1)



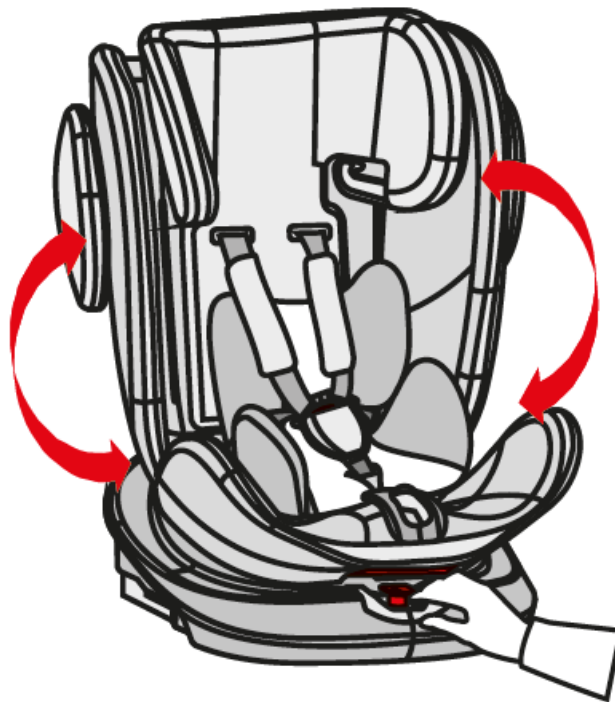
Only forward-facing
(Sample illustration)



Only rear-facing
(Sample illustration)

Turning the child car seat

- Use one hand to press the button on the front of the base and use your other hand to turn the seat unit in the direction required.
- The forward-facing position is only suitable for children of a minimum age of 15 months and a minimum height of 76 cm. The rear-facing position is designed for children from 76 to 105 cm in height with a maximum weight of 18 kg.
- The side position is only intended to facilitate the child's entry. This position must not be used while driving.



(Sample illustration)

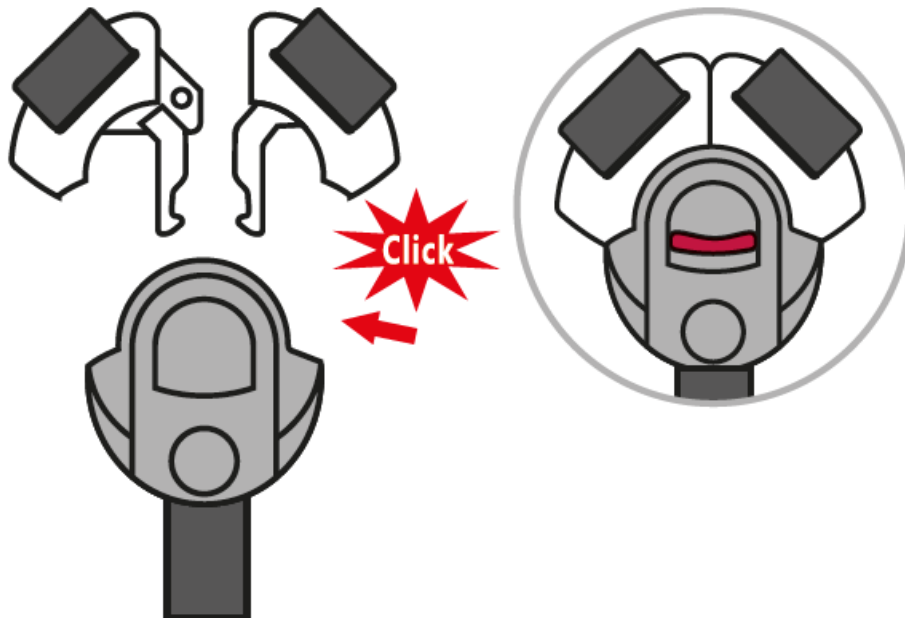
Adjusting the belt

- To loosen the belt, press the belt adjustment button in the seat area with one hand. Hold the belt buckle with the other hand and carefully loosen the attached straps.
- Pull the front adjustment strap to tighten the belts. Ensure that the straps are not twisted.



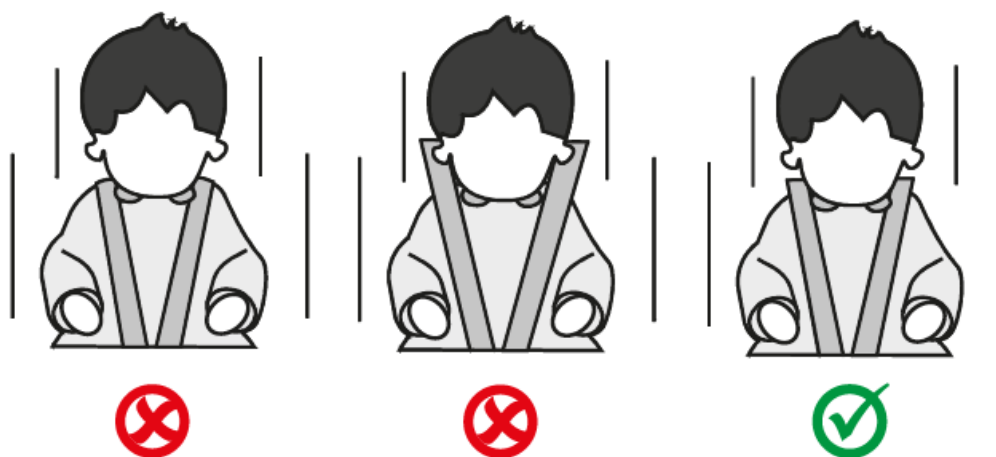
Opening/closing the belt

- To unlock the belt, press the button on the belt buckle, pull out the buckle tongues and separate them.
- To lock the belt, first connect both tongues of the buckle and then insert them together into the belt buckle.



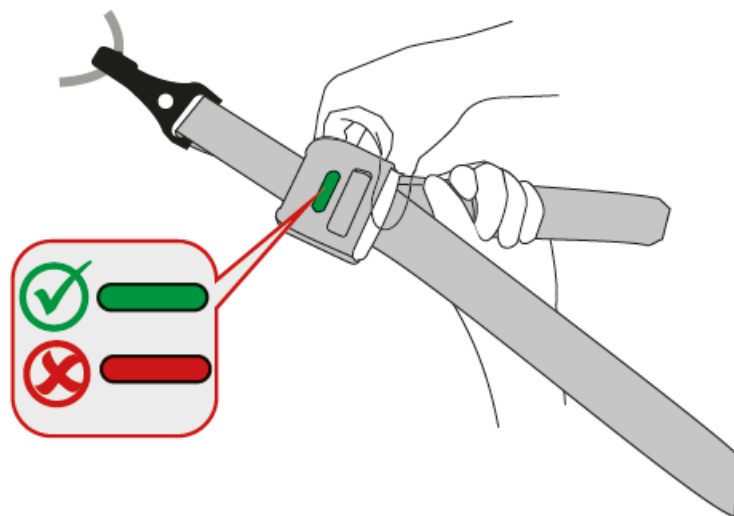
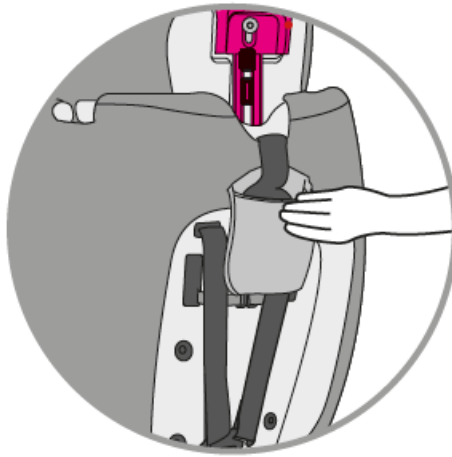
Adjusting the head support

- Release the belt and pull the lever to adjust the headrest on the back of the child car seat. Move the headrest until it engages at the correct height.
- Make sure the shoulder straps are positioned just above your child's shoulders when they come out of the child car seat.
- Release the lever and ensure that the head support is engaged.



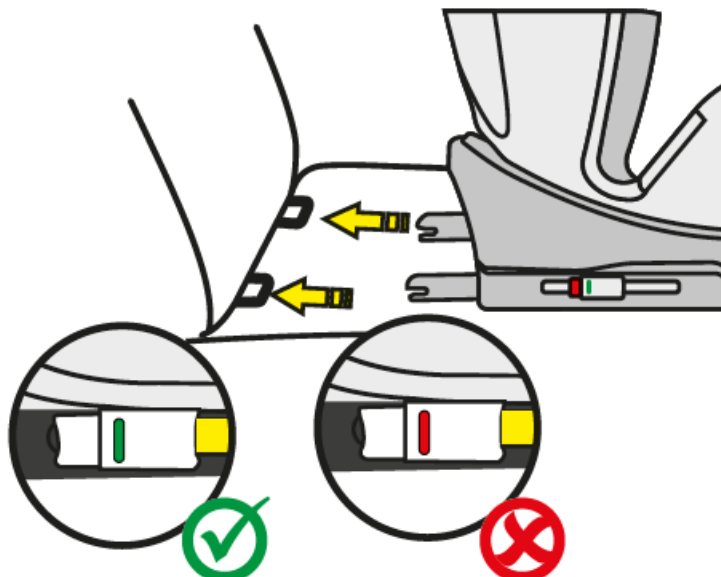
Top tether for height range 76–105 cm

- Remove the top tether from the pocket.
- To release the top tether, press the grey button with one hand and pull the side of the belt anchor to the required length with the other hand.
- To fix the top tether, clip the anchor to the fixing point on the car seat and pull it as tight as possible. The display does not turn green until the belt is tightened sufficiently.
- When using the child car seat facing to the rear, the top tether strap must be threaded through the top tether guide on the side of the child car seat. Ideally, use the guide towards the interior of your car to allow rotation toward the car door for easy entry and exit.
- The top tether strap is only necessary for children 76–105 cm in height. For children 100–150 cm in height, you can stow the top tether strap back in the storage compartment.



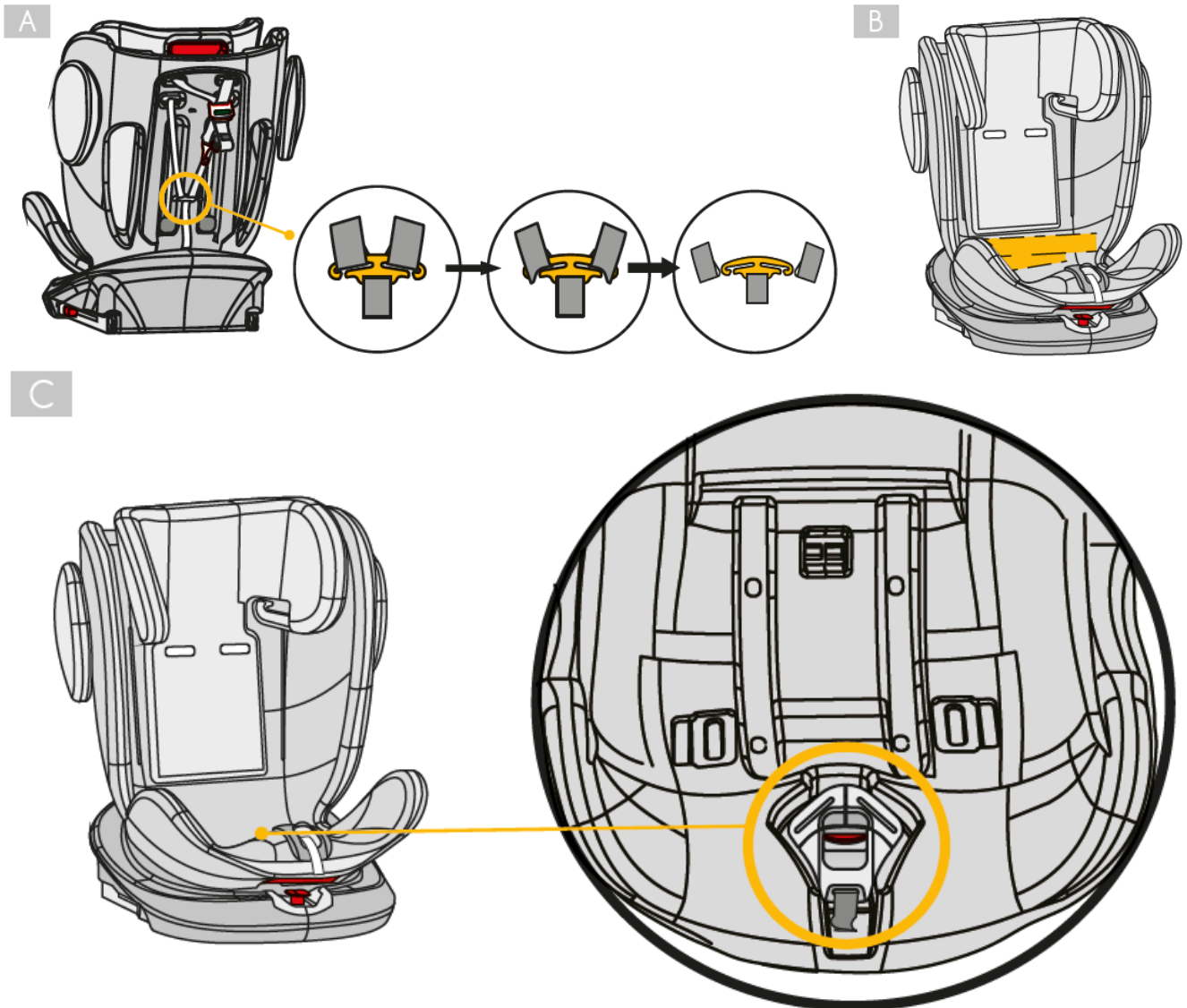
Isofix connectors

- Press the two lateral Isofix connector buttons in order to extend the length of the Isofix connectors.
- Guide the Isofix connectors onto the Isofix anchor points on the seat of the vehicle and ensure that they lock into position.
- Push the child car seat in until it rests securely against the backrest of the seat of the vehicle. Ensure that both Isofix indicators are showing green.



Removing the 5-point belt for children 100–150 cm in height

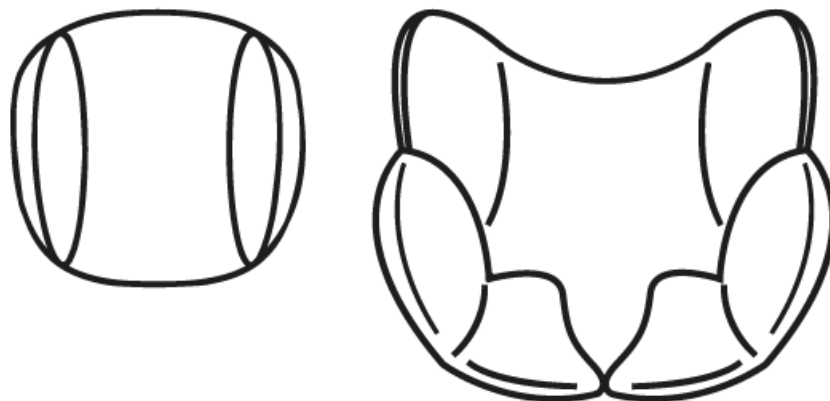
- Loosen the belt
- Pull the shoulder belts out of their metal brackets on the reverse side of the child car seat and guide these through the child car seat to the front. (Fig. A)
- Remove the shoulder pads and the belt buckle tongues from the belt.
- Fold the belt up so that it can be stored in the hollow in the backrest behind the cover. (Fig. B)
- Remove the buckle pad and thread the buckle through the slot in the cover. Click the previously removed belt buckle tongues into the belt buckle.
- Stow the belt buckle together with the belt buckle tongues in the recess provided in the seat area (Fig. C).
- Ensure that you keep all the parts that are removed in a safe place.



- (Sample illustrations)

Head cushion & comfort insert

- The head cushion and comfort insert are designed for babies 76–87 cm in height.
- Please remove the inserts as soon as your child exceeds the specified heights.



CLEANING

To guarantee long-term use of your child car seat, do not use any solvents, abrasive cleaners or aggressive cleaning agents to clean the car seat. Check the stability of the fabric and the seams after each wash. When washing the fabric, carefully follow the instructions on the label (see below).



Wash at 30°C,
gentle wash cycle



DO NOT
iron



DO NOT
bleach



DO NOT
dry clean



Tumble dry at low
temperature

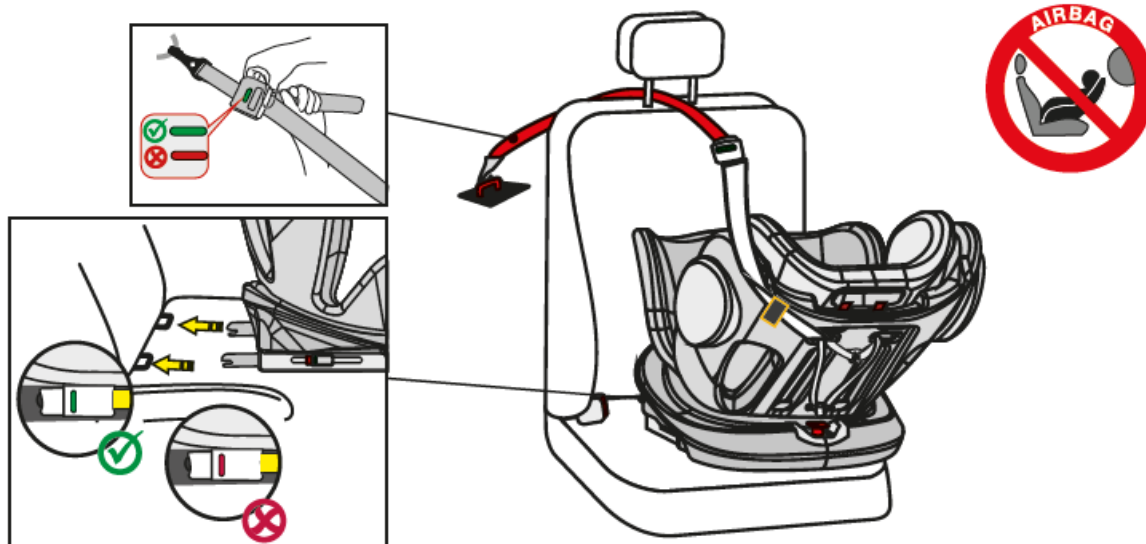
MAINTENANCE

Check the condition of the product for possible damage at regular intervals. In the event of damage, the child car seat must no longer be used and must be kept out of the reach of children. In case of any issues, please contact

Osann customer service on +49 (0)7731 970077.

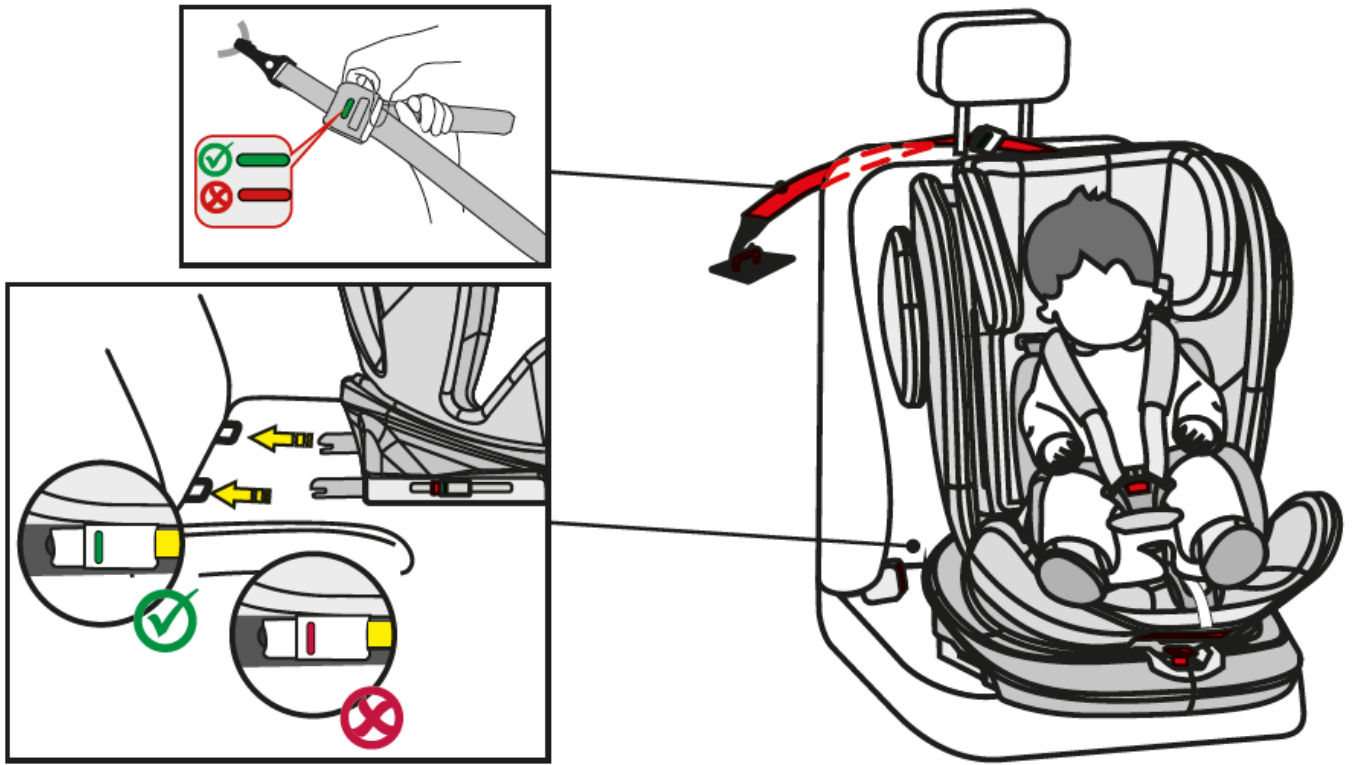
INSTALLATION OF THE CHILD CAR SEAT

Height range 76–105 cm, max. 18 kg, rear-facing



1. Set the child car seat to the maximum reclining position and turn it until it is in the rear-facing seat position R.
2. Press the two side Isofix connector buttons to extend the length of the Isofix connectors.
3. Guide the Isofix connectors onto the Isofix anchor points on the vehicle seat and ensure that they lock into position.
4. Push the child car seat in until it rests securely against the backrest of the vehicle seat. Ensure that both Isofix indicators are showing green.
5. Take the top tether from its storage pocket and extend it to the maximum length.
6. The top tether strap must be threaded through the top tether guide on the side of the child car seat. Ideally, use the guide towards the interior of your car to allow rotation towards the car door for easy entry and exit.
7. Clip the top tether onto the hook provided in your car (e.g. on the back of the car seat or in the boot. Please consult your car manual for this).
8. Tighten the top tether until the display on the top tether turns green.
9. When placing your child in the child car seat, turn the car seat towards the car door for convenience.
10. Unfasten the belt buckle on the child car seat and place the belts over the outside of the seat.
11. Put your child in the child car seat.
12. Adjust the height of the headrest as described above.
13. Fasten the belt buckle again until you hear a click.
14. Pull the front adjustment strap to tighten the belts. Ensure that the straps are not twisted.
15. Turn the seat into the rear-facing position. Check that the child car seat is locked in this position.

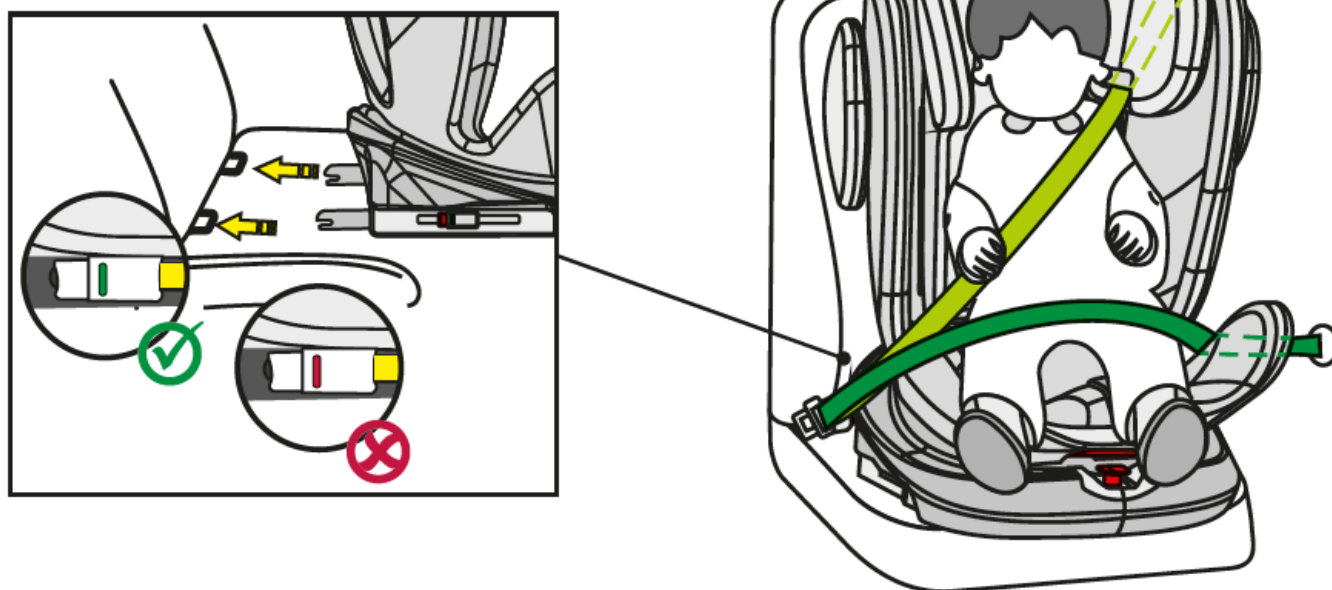
Height range 76–105 cm, min. 15 months, max. 18 kg, forward-facing



IMPORTANT: DO NOT USE THE CHILD CAR SEAT FACING IN THE DIRECTION OF TRAVEL UNTIL THE CHILD HAS REACHED THE AGE OF 15 MONTHS.

1. Press the two side Isofix connector buttons to extend the length of the Isofix connectors.
2. Guide the Isofix connectors onto the Isofix anchor points on the vehicle seat and ensure that they lock into position.
3. Push the child car seat in until it rests securely against the backrest of the vehicle seat. Ensure that both Isofix indicators have turned green.
4. Take the top tether from its storage pocket and extend it to the maximum length.
5. Clip the top tether onto the hook provided in your car (e.g. on the back of the car seat or in the boot. Please consult your car manual for this).
6. Tighten the top tether until the display on the top tether turns green.
7. Unfasten the belt buckle on the child car seat and place the belts over the outside of the seat.
8. Put your child in the child car seat.
9. Adjust the height of the headrest as described above.
10. Fasten the belt buckle again until you hear a click.
11. Pull the front adjustment strap to tighten the belts. Ensure that the straps are not twisted.
12. When facing in the direction of travel, the child car seat offers five adjustable seat positions.

Height range 100–150 cm, forward-facing



1. The 5-point belt on the child car seat must be removed as previously described. The top tether strap must be released and put back into the storage pocket. These are not needed for children of this height.
2. Press the two side Isofix connector buttons to extend the length of the Isofix connectors.
3. Guide the Isofix connectors to the Isofix anchor points on the car seat and snap them into place.
4. Push the child car seat in until it rests securely against the backrest of the vehicle seat. Ensure that both Isofix indicators have turned green.
5. Thread the diagonal belt of the 3-point car seat belt through the diagonal belt guide on the headrest of the child car seat.
6. When placing your child in the child car seat, turn the car seat towards the car door for convenience.
7. Put your child in the child car seat.
8. Adjust the height of the headrest so that the child's head is fully in the headrest and the diagonal belt comes out through the belt guide at the level of the child's shoulders.
9. Turn the seat into the forward-facing position. Check that the child car seat is locked in this position.
10. Fasten the belt buckle of the 3-point seat belt until you hear a click.
11. Pull on the diagonal strap to tighten it. Make sure that the straps are not twisted.
12. The seat position must be set to position 1.

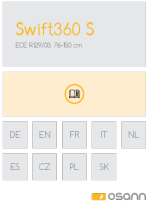
MORE INFORMATION

- www.osann.de
- Osann GmbH
- Gewerbestr. 22
- D-78244 Gottmadingen
- Tel.: +49 (0)7731 970077
- Fax: +49 (0)7731 970055
- E-Mail: info@osann.de

FAQ

- **Q: Can the child car seat be used on all vehicles?**
 - A: The child restraint system can be used on all Isofix seats as long as there is also an attachment hook for the top tether.
- **Q: At what age should the child car seat face the direction of travel?**
 - A: Do not use the child car seat facing in the direction of travel until the child has reached the age of 15 months.
- **Q: Can the child car seat be installed on a front seat with an airbag?**
 - A: Do not attach the child car seat for rear-facing use on a front seat with an airbag unless it can be deactivated. Refer to the vehicle manual for more information.

Documents / Resources

	<p>Osann Swift360 S Degree Rotating Child Seat [pdf] Instruction Manual D01SR-A, Swift360 S Degree Rotating Child Seat, Swift360 S, Degree Rotating Child Seat, Rotating Child Seat, Child Seat</p>
---	---

References

- [User Manual](#)

Manuals+, Privacy Policy

This website is an independent publication and is neither affiliated with nor endorsed by any of the trademark owners. The "Bluetooth®" word mark and logos are registered trademarks owned by Bluetooth SIG, Inc. The "Wi-Fi®" word mark and logos are registered trademarks owned by the Wi-Fi Alliance. Any use of these marks on this website does not imply any affiliation with or endorsement.