

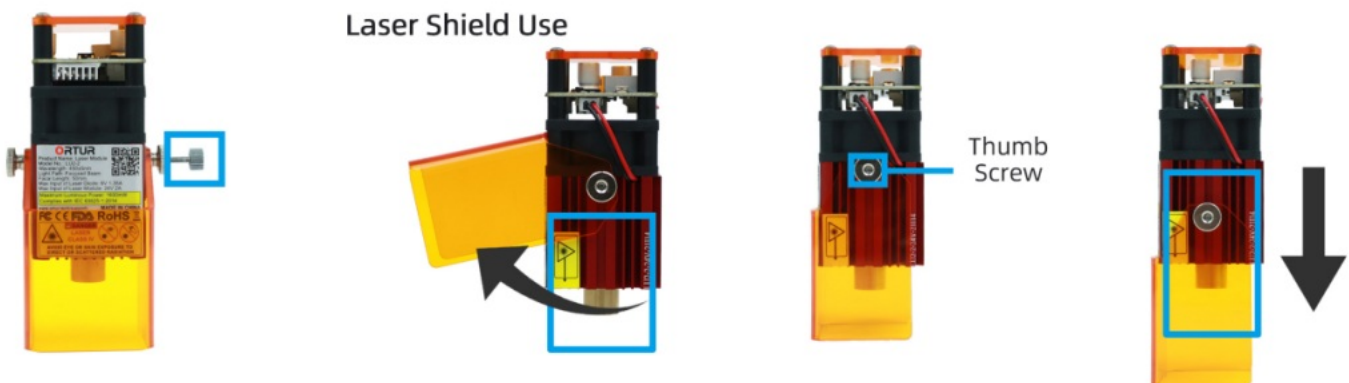


## ORTUR LU2-2 Laser Fixed Focus Module User Manual

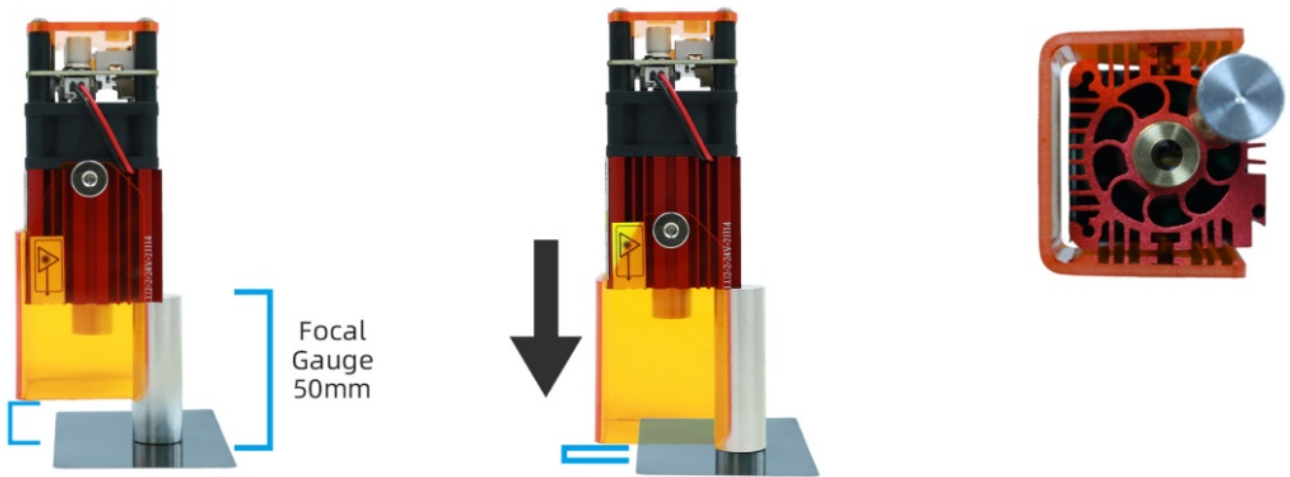
[Home](#) » [ORTUR](#) » ORTUR LU2-2 Laser Fixed Focus Module User Manual 



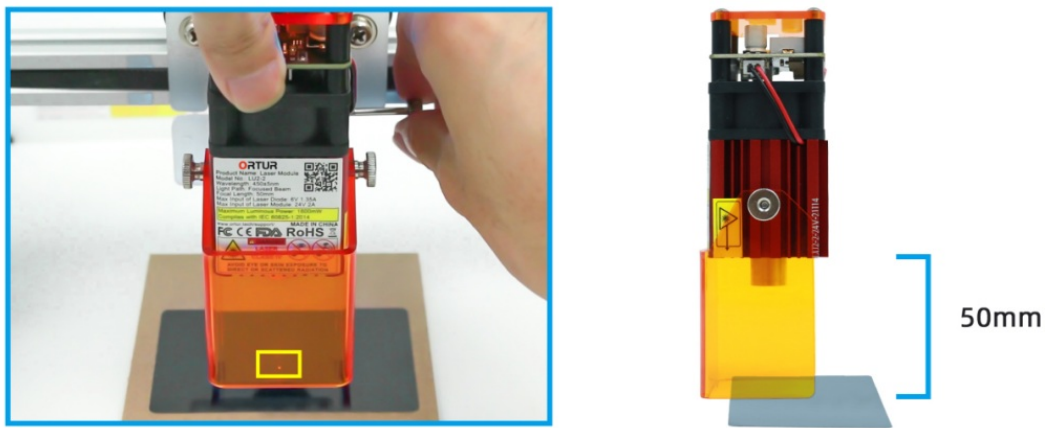
### LUS-2-USER MANUAL



Loosen the thumbscrew, you can slide up and down to adjust the focus.  
Loosen the thumbscrew on both sides to adjust the position of the laser shield.  
Use the focal gauge to adjust focus (for the new hand).



**Note** the position of the focal gauge placement/otherwise it will affect the effect of engraving or cutting.  
**Use the aluminum plate to adjust focus (for the adept).**



Slide up and down to adjust the focus, find the position of the smallest light spot, the light spot appears as shown in the figure. (Because less power, is more difficult to observe, requires patience adjustment)

Focusing Tutorial Video: <https://m.youtube.com/watch?v=00hMHhvi58>

## Contents

- 1 Documents / Resources
- 2 Related Posts

## Documents / Resources

	<p><b><a href="#">ORTUR LU2-2 Laser Fixed Focus Module</a></b> [pdf] User Manual  LU2-2, Laser Fixed Focus Module, LU2-2 Laser Fixed Focus Module</p>
	<p><b><a href="#">ORTUR LU2-2 Laser Fixed Focus Module</a></b> [pdf] User Manual  LU2-2, Laser Fixed Focus Module, LU2-2 Laser Fixed Focus Module</p>