



# ORTECH ODC-8003 80 CFM Next Generation Compact Series Fan Instruction Manual

[Home](#) » [Ortech](#) » ORTECH ODC-8003 80 CFM Next Generation Compact Series Fan Instruction Manual 

## Contents

- 1 ORTECH ODC-8003 80 CFM Next Generation Compact Series Fan
- 2 INSTALLATION MUST BE CARRIED OUT BY A QUALIFIED ELECTRICIAN
- 3 Application Notice
- 4 CLEANING & MAINTENANCE
- 5 Types of Typical Installations
- 6 Plan the Installation
- 7 Assembly Instructions
  - 7.1 Mount Housing to Joist or I joist
  - 7.2 Mount with Mounting Holes and Hanger Bar
  - 7.3 Mount to I joist
- 8 Compact Series MODEL ODC-1008 ODC-9008 ODC-8003 Assembly Instructions
  - 8.1 Install Duct and Blower Assembly
  - 8.2 Fix the duct by the tab
  - 8.3 Install Round Ductwork
- 9 Retrofit Installation
- 10 Connect Electrical Wiring
- 11 Install Grille
- 12 Service Parts
- 13 Installation with LED Grille & Fire Damper
- 14 Documents / Resources
- 15 Related Posts

# ORTECH

**ORTECH ODC-8003 80 CFM Next Generation Compact Series Fan**



## **WARNING**

### **INSTALLATION MUST BE CARRIED OUT BY A QUALIFIED ELECTRICIAN**

1. For general ventilating use only. DO NOT use to exhaust hazardous or explosive materials and vapors.
2. To avoid motor bearing damage and noisy and/or unbalanced impellers, keep drywall spray, construction dust, etc. off power unit.

## **Application Notice**

1. Use this unit only in the manner intended by the manufacturer.
2. Contact the manufacturer in case of questions
3. Before servicing or cleaning unit, switch power off at service panel and lock the service disconnecting means to prevent power from being switched on accidentally.
4. When the service disconnecting means cannot be locked, securely fasten a prominent warning device, such as a tag, to the service panel
5. Installation work and electrical wiring must be done by a qualified persons in accordance with all applicable codes and standards, including fire-rated construction codes and standards
6. Sufficient air is needed for proper combustion and exhausting of gases through the flue chimney of fuel burning equipment to prevent back drafting.
7. Follow the heating equipment manufacturer's guideline and safety standards such as those published by the National Fire Protection Association NFPA and the American Society for Heating Refrigeration and Air Conditioning Engineers ASHRAE and the local code authorities
8. When cutting or drilling into wall or ceiling, DO NOT damage electrical wiring and other hidden utilities
9. Ducted fans must always be vented to the outdoors
10. Acceptable for use over a tub or shower when connected to a GFCI Ground Fault Circuit Interrupter protected branch circuit ceiling installation only.
11. This unit must be grounded
12. This product is designed for installation in ceilings up to a 12/12 pitch 45°.
13. Duct connector MUST point up.
14. DO NOT mount this product in a wall

## **CAUTION**

Electrical products can cause death or injury, or damage to property. If in any doubt about the installation or use of this product, consult a competent electrician.

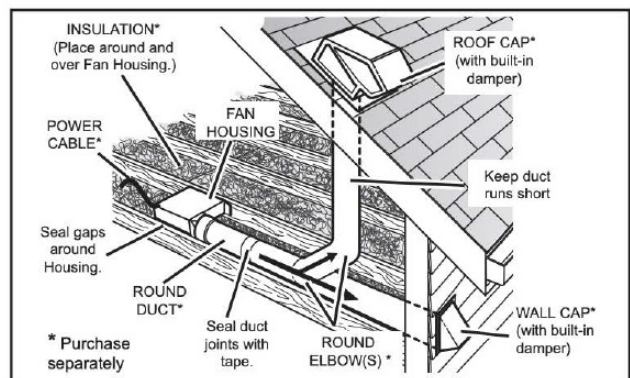
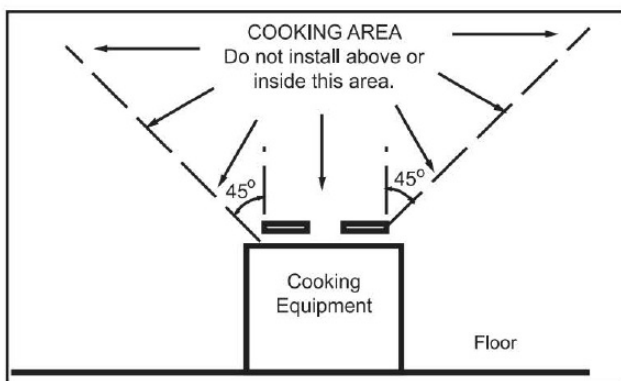
## CLEANING & MAINTENANCE

For quiet and efficient operation, long life, and attractive appearance lower or remove grille and vacuum interior of unit with the dusting brush attachment. The motor is permanently lubricated and never needs oiling. If the motor bearings are making excessive or unusual noises, replace the motor with the exact service motor. The impeller should also be replaced.

## Types of Typical Installations

1. Housing mounted to I-joists.
2. Housing mounted to joists.
3. Housing mounted to truss.

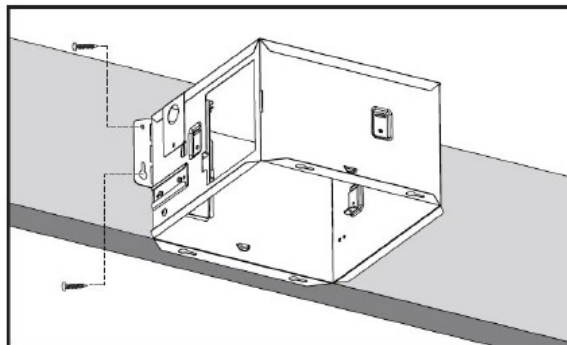
## Plan the Installation



1. DO NOT use in a cooking area.
2. Two ways to connect ductwork to a factory-shipped unit.

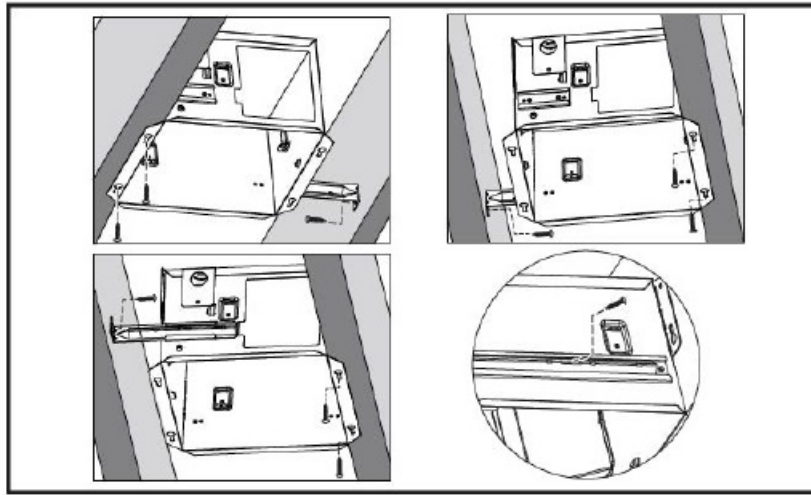
## Assembly Instructions

### Mount Housing to Joist or I joist



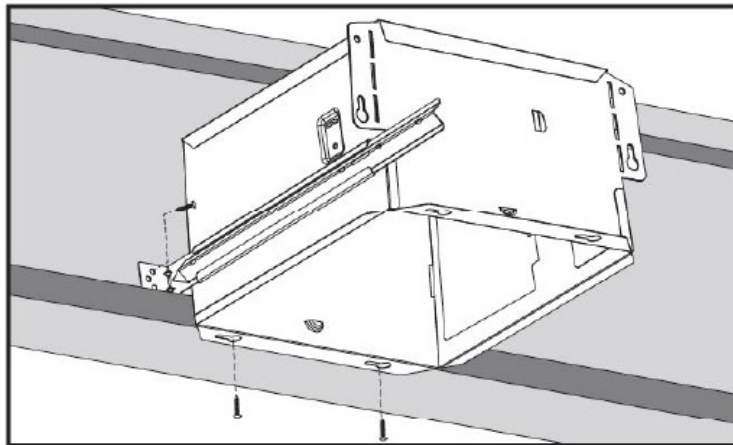
Hold the housing so that it is in contact with the bottom of the joist. Attach the housing with four (4) screws to the joist through the holes in each mounting flange

### Mount with Mounting Holes and Hanger Bar



Slide one hanger bar into the channel on the housing and adjust as needed to fit between framing. Hold housing in place so that the housing contact the bottom of the joist. Screw housing to joist through the hole of the housing. Screw the hanger bar onto the other side of joist through the hole. Screw hanger bar to housing with screw.

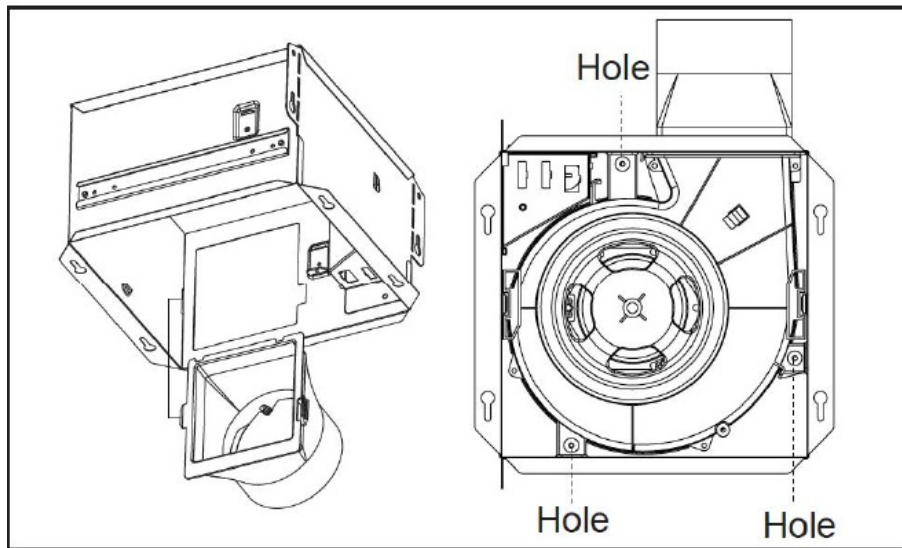
#### **Mount to I joist**



Slide one hanger bar into channel on the housing and adjust as needed. Hold housing in place so that the housing contacts the bottom of the joist. Screw housing to joist through the hole of the housing. Screw the hanger bar onto the joist through the hole. Screw hanger bar to housing with screw.

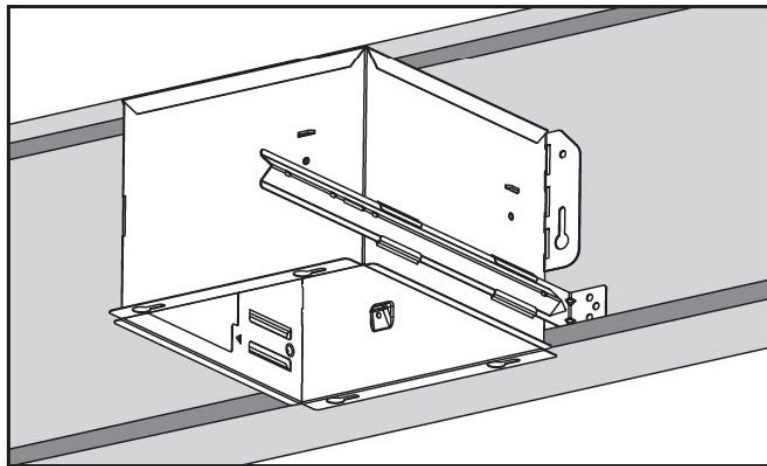
### **Compact Series MODEL ODC-1008 ODC-9008 ODC-8003 Assembly Instructions**

#### **Install Duct and Blower Assembly**



Install duct from the inside of the housing.

#### **Fix the duct by the tab**



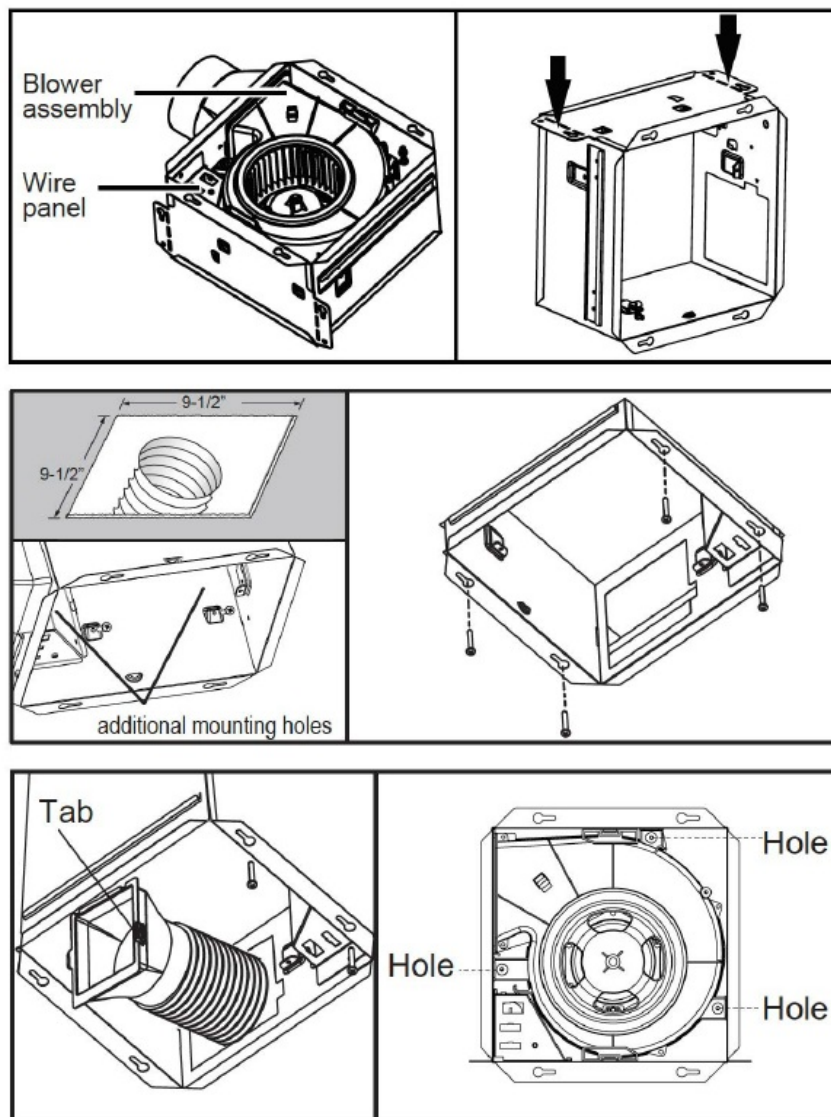
Fix the blower assembly to the housing by 3 screws.

#### **Install Round Ductwork**

- Connect the round ductwork (not included) to the damper / duct connector, and run the ductwork to a roof or wall cap (not included)
- Using tape not included, secure all the ductwork connections so that they are air tight
- Insulated flexible duct is recommended for the quietest possible installation.
- If rigid duct is used, a short 1-3ft section of insulated flexible duct will ensure quiet operation.

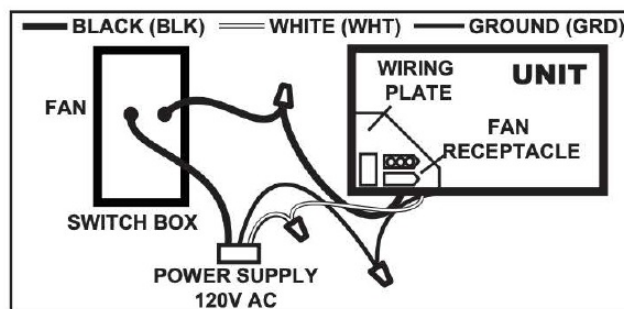
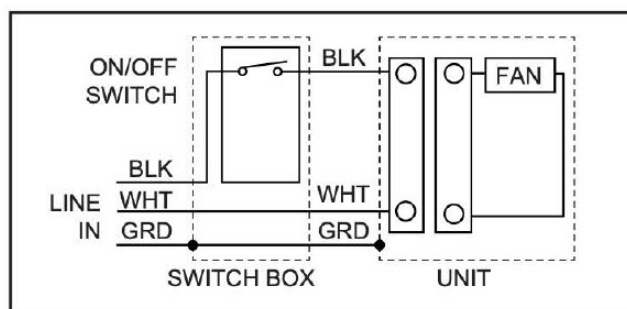
The ducting from this fan to the outside of building has a strong effect on the air flow, noise and energy use of the fan. Use the shortest, straightest duct routing possible for best performance, and avoid installing the fan with smaller ducts than recommended. Insulation around the ducts can reduce energy loss and inhibit mold growth. Fans installed with existing ducts may not achieve their rated airflow.

#### **Retrofit Installation**



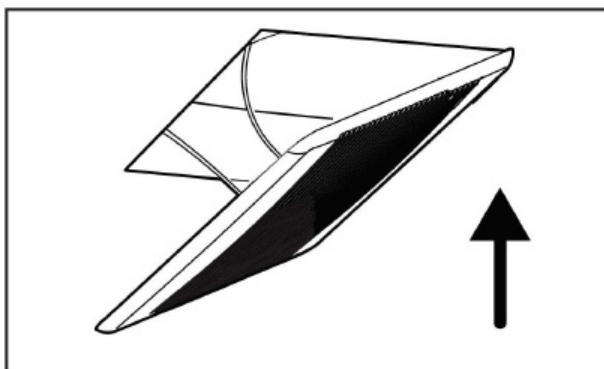
1. Remove wire panel and blower assembly before installation
2. Fold mounting hears flat against housing
3. Enlarge ceiling opening to 9-1/2 by 9-1/2, leave ductwork and wiring in place
4. Connect wiring according to the wiring diagram.
5. Reinstall wire panel
6. Mounting fan
  1. Mount with additional mounting holes.
  2. The interior of the fan housing contains additional mounting holes in case exterior mounting is not possible.
  3. Screw or nail the fan housing directly to the framing or joists.
  4. Remove the blower assembly as directed in the service parts very last page to gain access to the additional mounting holes
7. Mount with hole of the flange.
  1. Use screws included to screw fans to the ceiling through the holes of the housing.
8. Connect Duct
  1. Pull existing ducting through housing discharge opening and tape ducting to duct connector.
  2. Push connector / ducting back through opening, fix the duct by the tab.
  3. Install the blower assembly.

## Connect Electrical Wiring

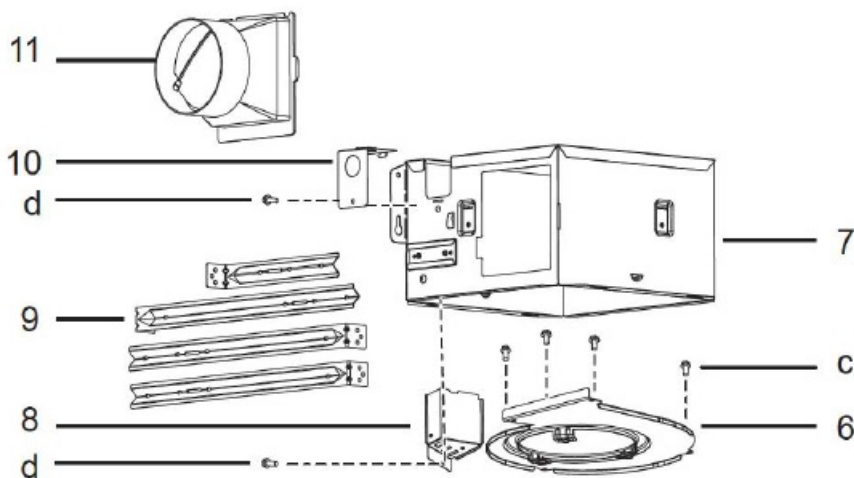


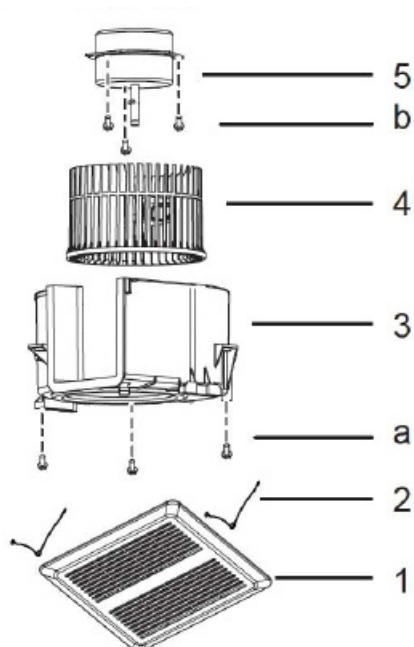
Run 120V AC house wiring to the location of the fan. Use only UL-approved connectors (not included) to attach the house wiring to the wiring plate.

## Install Grille



Install ceiling material to complete the ceiling construction. Then, cut around the fan housing. To attach the grille assembly to the fan housing, pinch the grille springs on the sides of the grille assembly, and position the grille into the housing with the grille springs in the appropriate slots. Push the grille assembly towards the ceiling to secure.





## Service Parts

PART	PART NAME	Qty.
1	Grille Assembly (includes part 2)	1
2	Grille Spring	2
3	Blower	1
4	Blower Wheel	1
5	Motor	1
6	Motor Plate	1
7	Housing	1
8	Wire Panel / Harness Assembly	1
9	Hanger Bars	4
10	Wiring Plate	1
11	Damper/Duct Connector	1
a	Screw	3
b	Screw	3
c	Screw	4
d	Screw	2

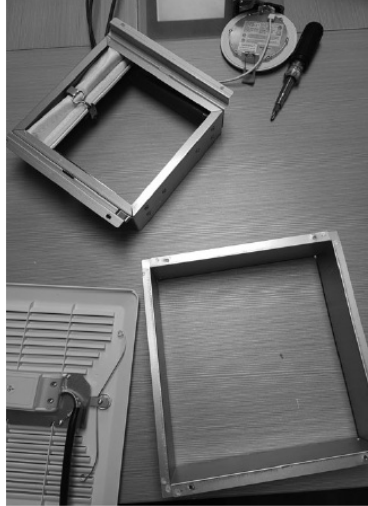
## WARNING

Ensure that the fan is switched OFF from the supply mains before replacing.

- Blower Assembly includes part 3, 4, 5, 6, a, b
- Replacement Installation:
- Remove the screw part a, then take out the blower assembly from the housing part 7.
- Replace the broken parts.

## Installation with LED Grille & Fire Damper

1. Remove the damper from the flange 4 screws.



2. Open the quick connect seat, and place the LED extension cable in the cut out seat.
3. Optionally, open the lower port to fish out the cables.
4. Reconnect the seat and bottom port.



5. Connect the fan to the quick connect, and slide on the flange, then connect the LED quick connect to the new quick connect.

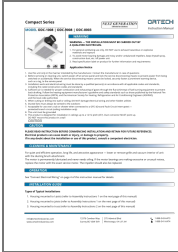


6. Slide the damper flange into the fan and re-attach the fire damper to the damper flange.
7. Make sure the LED wire is behind the u-tab to reduce risk of pinching. Secure the flange & fire damper together using the 4 screws.



8. Using the two mounting clips, connect the LED grille to the damper.





[ORTECH ODC-8003 80 CFM Next Generation Compact Series Fan](#) [pdf] Instruction Manual ODC-1008, ODC-9008, ODC-8003, 80 CFM Next Generation Compact Series Fan, ODC-8003 80 CFM Next Generation Compact Series Fan, Next Generation Compact Series Fan, Compact Series Fan, Fan