



## ORTECH ERV-SC-2 ERV Screen Controller



## Contents [ [hide](#) ]

[1 IMPORTANT INFORMATION](#)

[2 HARDWARE CONTENTS](#)

[3 INSTALLATION](#)

[4 WIRING DIAGRAM](#)

[5 CUSTOMER SUPPORT](#)

[6 Documents / Resources](#)

[6.1 References](#)

## IMPORTANT INFORMATION

### WARNING

**WARNING** — THE INSTALLATION MUST BE CARRIED OUT BY A QUALIFIED ELECTRICIAN.

- Before connecting wires, unplug the unit or switch power off at service panel.
- Always wear safety glasses and gloves while performing these instructions.
- Wiring must be done in accordance to applicable codes and standards.

### CAUTION

FAILURE TO COMPLY WITH THE FOLLOWING CAN CAUSE ERRATIC OPERATION OF THE CONTROL AND/OR UNIT.

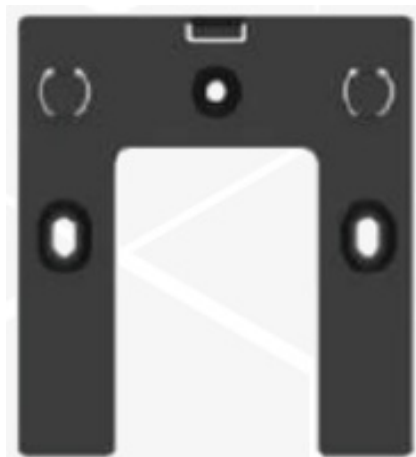
- Never install more than one main wall control per ventilation unit.
- Keep control low voltage wiring at least 1 foot (305mm) away from motors, lighting ballast, light dimming circuit and power distribution panel.
- Do not route control wiring alongside house power wiring. Ensure the wires are securely connected.
- Use normal copper wire or low voltage wire to connect the unit with the controller, 30M length maximum or use a shielded wire, 10M ideal.

## HARDWARE CONTENTS

- Screen Controller x 1



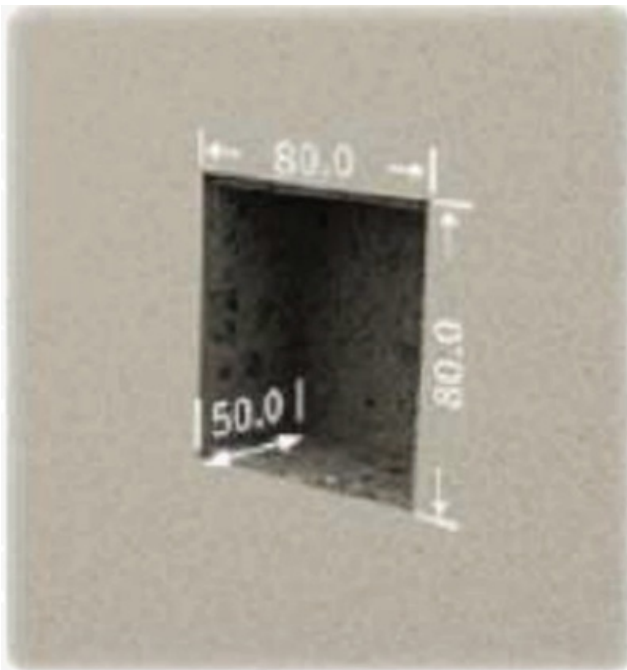
- Bracket x 1



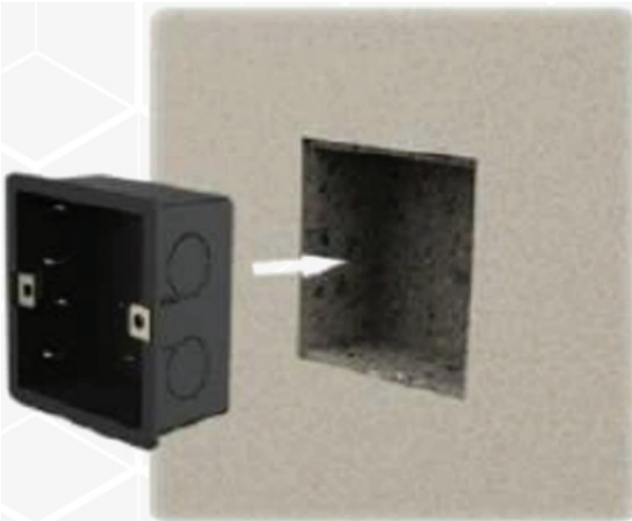
## INSTALLATION

1. The opening requirements are shown in STEP 1. Depth  $\leq 50\text{mm}$ .  
The size of the wall opening should be slightly larger than that of pre-embedded concealed box.
2. Install the embedded concealed box at the opening on the wall.
3. Fix the wire controller to the concealed junction box by screws.
4. Wire controller bracket is fixed to the concealed junction box.
5. Align the product positioning holes with the wire controller bracket snap and push the product downward to secure the product fixed to the bracket.
6. Installation complete.

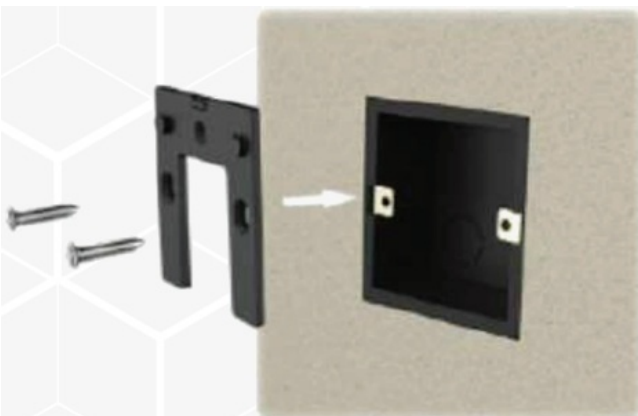
### STEP 1



**STEP 2**



**STEP 3**



**STEP 4**



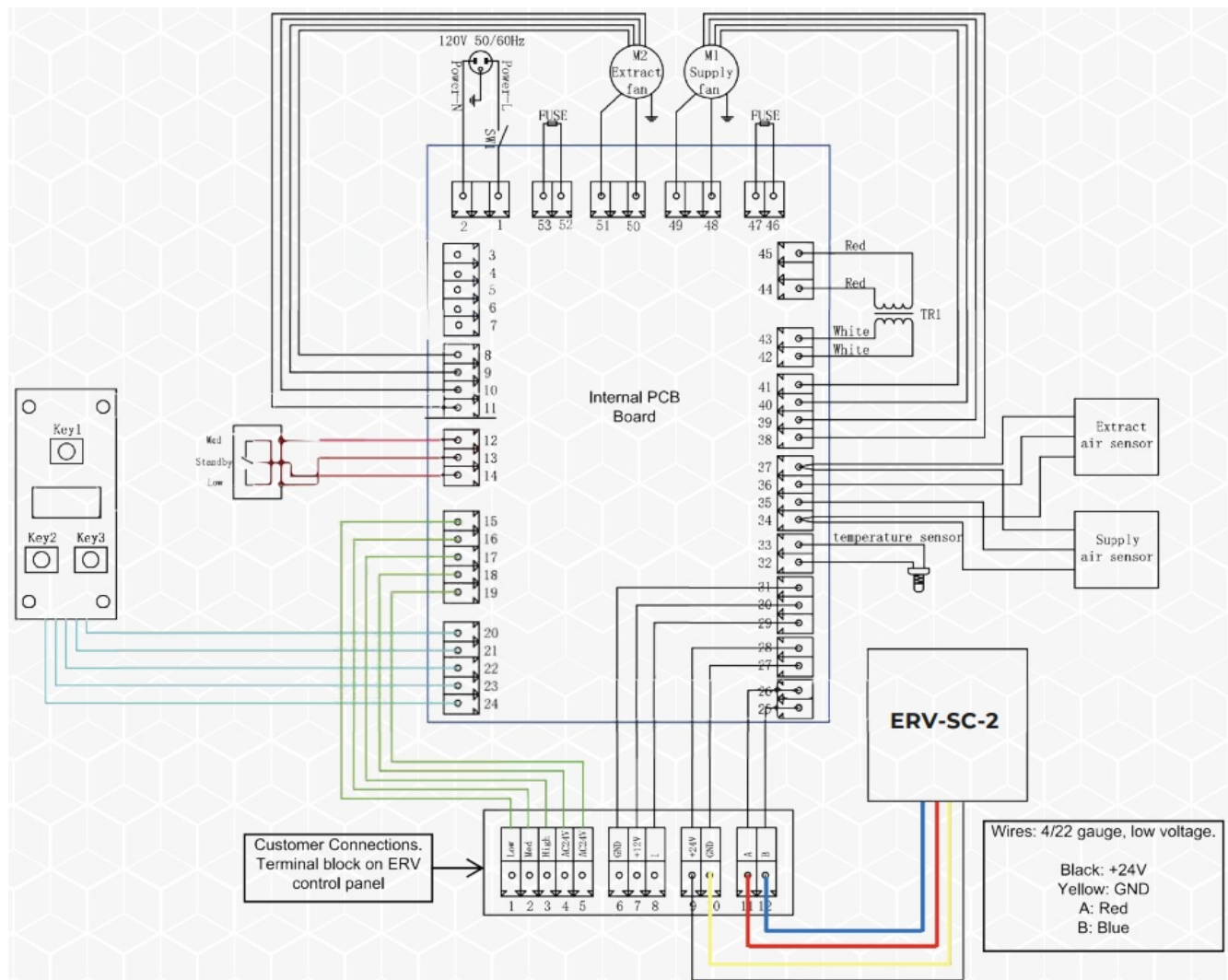
**STEP 5**



**STEP 6**



# WIRING DIAGRAM



ORTECH reserves the right to modify at any time, without notice, any or all of our product's features, designs, components and specifications to meet market changes.

## CUSTOMER SUPPORT



[www.ortechindustries.ca](http://www.ortechindustries.ca)



1.888.543.6473

13376 Comber Way, Surrey, BC V3W 5V9



205 Summerlea Road, Brampton, Ontario



[info@ortechindustries.com](mailto:info@ortechindustries.com)



604.543.6473



## Documents / Resources



[ORTECH ERV-SC-2 ERV Screen Controller \[pdf\]](#) Instruction Manual

ERV-SC-2, ERV-SC-2 ERV Screen Controller, ERV-SC-2, ERV Screen Controller, Screen Controller, Controller

## References

- [User Manual](#)

controller, ERV Screen Controller, ERV-SC-2, ERV-SC-2 ERV Screen Controller, Ortech, Screen

Ortech Controller

## Leave a comment

Your email address will not be published. Required fields are marked \*

Comment \*

Name

Email

Website

☐ Save my name, email, and website in this browser for the next time I comment.

**Post Comment**

**Search:**

**Search**

[Manuals+](#) | [Upload](#) | [Deep Search](#) | [Privacy Policy](#) | [@manuals.plus](#) | [YouTube](#)

This website is an independent publication and is neither affiliated with nor endorsed by any of the trademark owners. The "Bluetooth®" word mark and logos are registered trademarks owned by Bluetooth SIG, Inc. The "Wi-Fi®" word mark and logos are registered trademarks owned by the Wi-Fi Alliance. Any use of these marks on this website does not imply any affiliation with or endorsement.