



## Orion INSTRUMENTS MZ-1A Oem High Range Pressure Switches Instruction Manual

[Home](#) » [Orion Instruments](#) » Orion INSTRUMENTS MZ-1A Oem High Range Pressure Switches Instruction Manual 

### Contents

- [1 Orion INSTRUMENTS MZ-1A Oem High Range Pressure Switches](#)
- [2 Product Information](#)
- [3 Product Usage Instructions](#)
- [4 PRESSURE CAPSULE DETAILS](#)
- [5 INSTALLATION DRAWING](#)
- [6 RANGE SELECTION TABLE](#)
- [7 SPECIFICATIONS](#)
- [8 Documents / Resources](#)
- [9 Related Posts](#)



**Orion INSTRUMENTS MZ-1A Oem High Range Pressure Switches**





## Product Information

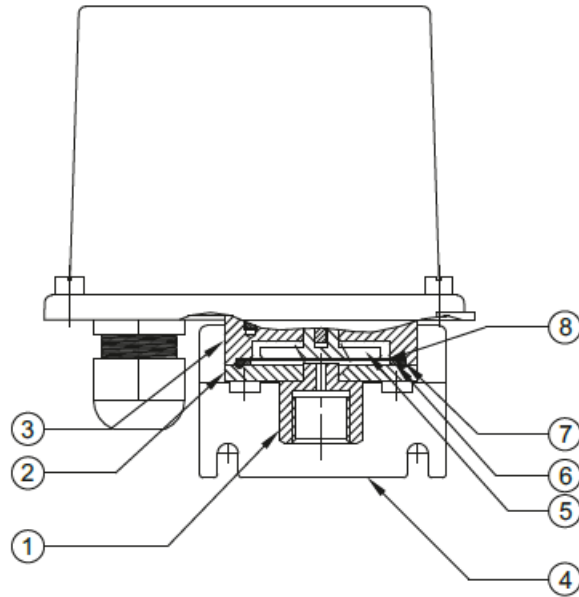
The MZ\_\_A / MX\_\_A OEM High Range Pressure Switches are pressure switches designed for industrial applications. They come with a range selection table to choose the appropriate model code based on the desired pressure range. These pressure switches have a maximum working pressure ranging from 200 psi to 500 psi, depending on the model. They are equipped with a SPDT snapaction microswitch with an electrical rating of 15 Amp, 250 VAC. The enclosure is IP66 standard, featuring a transparent tough polycarbonate cover for protection. The wetted parts are made of SS316 and Teflon, ensuring durability and resistance to corrosive materials. The pressure port is 1/4 NPTF standard and the cable gland is M20 x 1.5 standard (polyamide). The maximum temperature of the working medium is 80°C, and for higher temperatures, impulse tubing should be used.

## Product Usage Instructions

1. Select the appropriate model code from the Range Selection table based on the desired pressure range.
2. Install the pressure switch according to the provided installation drawing.
3. Ensure that the wetted parts mentioned in italics are properly installed.
4. Connect the pressure port (SS316) to the desired system or equipment.
5. Secure the pressure switch using the mounting bracket and four cover locking screws.
6. Insert the cable through the cable entry and tighten the cable gland (M20 x 1.5 standard).
7. Make sure the pressure switch is within the specified maximum temperature limit (80°C).
8. For higher temperatures, use impulse tubing.
9. Refer to the user manual for any additional information or graphs related to minimum differential increases with setpoint.

## PRESSURE CAPSULE DETAILS



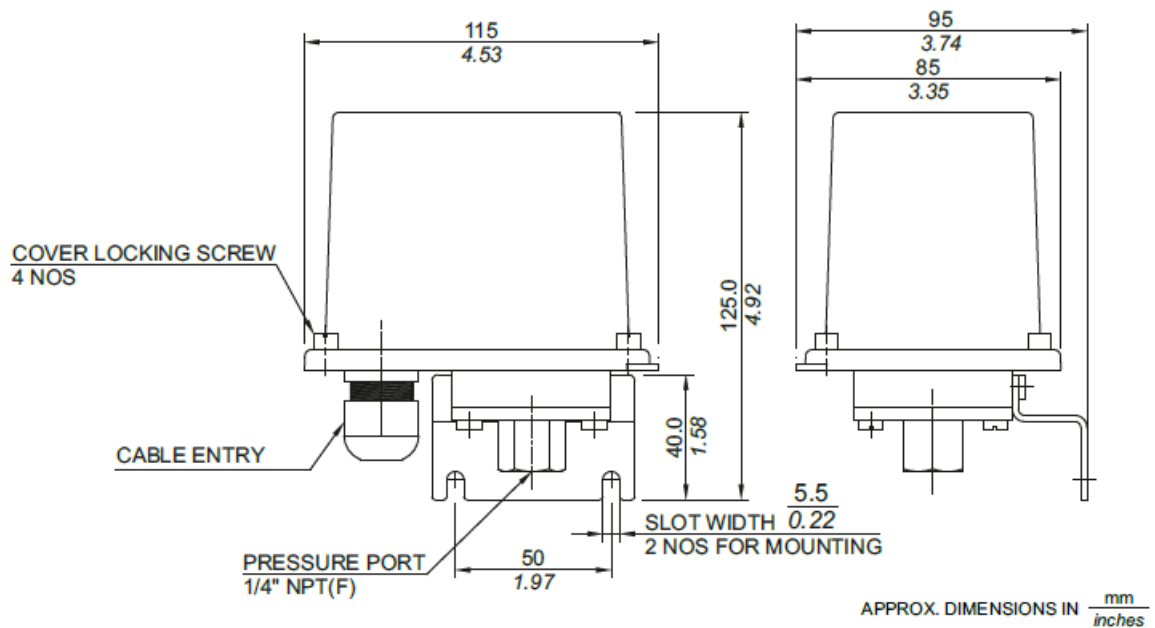


### No.: Description

1. Pressure Port (SS316)
2. Housing Plate (SS316)
3. Disc
4. Mounting Bracket
5. Plunger
6. Ring (SS316)
7. O-Ring (Teflon )
8. Diaphragm (Teflon )

**Note :** wetted parts are mentioned in *italics*.

### INSTALLATION DRAWING



### RANGE SELECTION TABLE



Model Code	Range † psi	*Approximate Maximum Differential psi	*Adjustable Differential psi	Maximum Working Pressure psi
MZ-1A	1.5-15.0	2.0	–	200
MZ-4A	3.0-50.0	3.0	–	200
MZ-7A	7.0-100.0	6.0	–	200
MZ-10A	7.0-150.0	12.0	–	350
MZ-15A	15.0-200.0	20.0	–	350
MZ-30A	70.0-350.0	20.0	–	500
MX-1A		–	2 – 6	200
MX-4A		–	3 – 7	200
MX-7A		–	12 – 29	200
MX-10A		–	12 – 29	350
MX-15A		–	14 – 36	350
MX-30A		–	22 – 45	500

\*Minimum differential increases with setpoint (Graphs available on request) †Rising pressure for MZ series

## SPECIFICATIONS

- Range : As per model code
- Electrical rating : 15 Amp, 250 VAC, SPDT snapaction microswitch
- Enclosure# : IP66 standard, transparent tough polycarbonate cover
- Wetted parts : SS 316 & Teflon
- Pressure port : 1/4" NPTF standard
- Cable gland : M20 x 1.5 standard (polyamide)
- Maximum temperature of working medium : 80o C maximum. Please use impulse tubing for higher temperatures

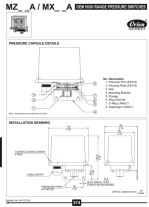
# – IP66 is approximately equivalent to NEMA 4X

## HOW TO ORDER MZ\_\_A SERIES OEM PRESSURE SWITCHES

Please select model code from Range Selection table

## Documents / Resources





[Orion INSTRUMENTS MZ-1A Oem High Range Pressure Switches](#) [pdf] Instruction Manual  
MZ-1A, MZ-4A, MZ-7A, MZ-10A, MZ-15A, MZ-30A, MX-1A, MX-4A, MX-7A, MX-10A, MX-15A, M  
X-30A, MZ-1A Oem High Range Pressure Switches, MZ-1A, Oem High Range Pressure  
Switches, Range Pressure Switches, Pressure Switches, Switches