



# Origin 21 WR2SMDK-16-W Small Mesh Drawer Kit Instruction Manual

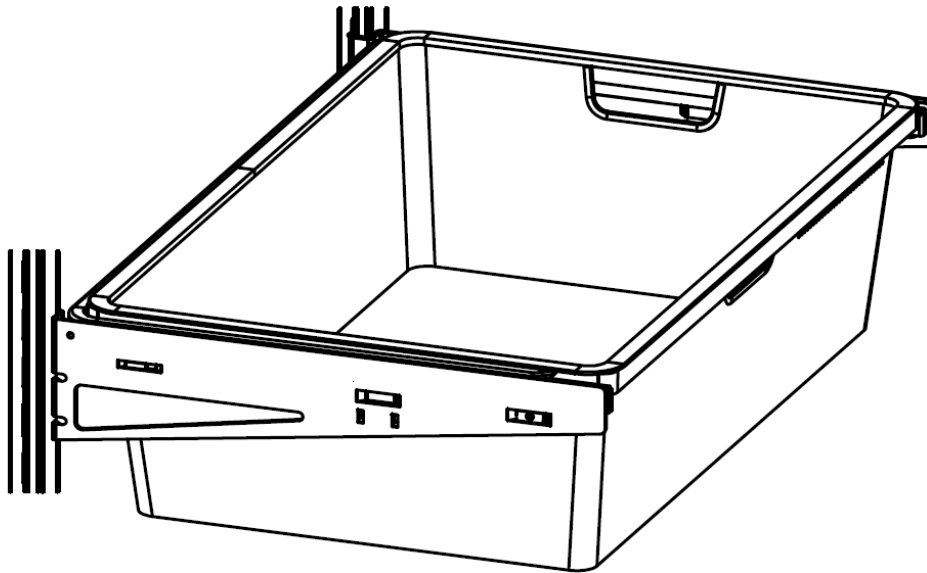
[Home](#) » [Origin 21](#) » Origin 21 WR2SMDK-16-W Small Mesh Drawer Kit Instruction Manual 

## Contents

- [1 Origin 21 WR2SMDK-16-W Small Mesh Drawer Kit](#)
- [2 PREPARATION](#)
- [3 SAFETY INFORMATION](#)
- [4 OPERATING INSTRUCTIONS](#)
- [5 PACKAGE CONTENTS](#)
- [6 INSTALLATION OVERVIEW](#)
- [7 CARE AND MAINTENANCE](#)
- [8 WARRANTY](#)
- [9 Documents / Resources](#)
- [10 Related Posts](#)

# Origin<sup>21</sup>

**Origin 21 WR2SMDK-16-W Small Mesh Drawer Kit**



ORIGIN 21 and logo design are trademarks or registered trademarks of LF, LLC. All rights reserved.

Thank you for purchasing this ORIGIN 21 product. We've created these easy-to-follow instructions to ensure you spend your time enjoying the product instead of putting it together. But, if you need more information than what is provided here, please visit [Lowes.com](https://www.lowes.com), search the item number and refer to the Guides & Documents tab on the product's page.

If the item is no longer for sale, or if you have any questions or problems, please call our customer service department at 888-251-1026, 8 a.m. – 8 p.m., EST, Monday – Sunday. You could also contact us at [partsplus@lowes.com](mailto:partsplus@lowes.com)

## PREPARATION

Before beginning assembly of product, make sure all parts are present. Compare parts with package contents list and hardware contents list.

If any part is missing or damaged, do not attempt to assemble the product.

**Estimated Assembly Time:** 15 minutes

## FEELING CONFIDENT? START YOUR NEXT PROJECT

Visit [www.lowes.com](https://www.lowes.com) for more information.

## SAFETY INFORMATION

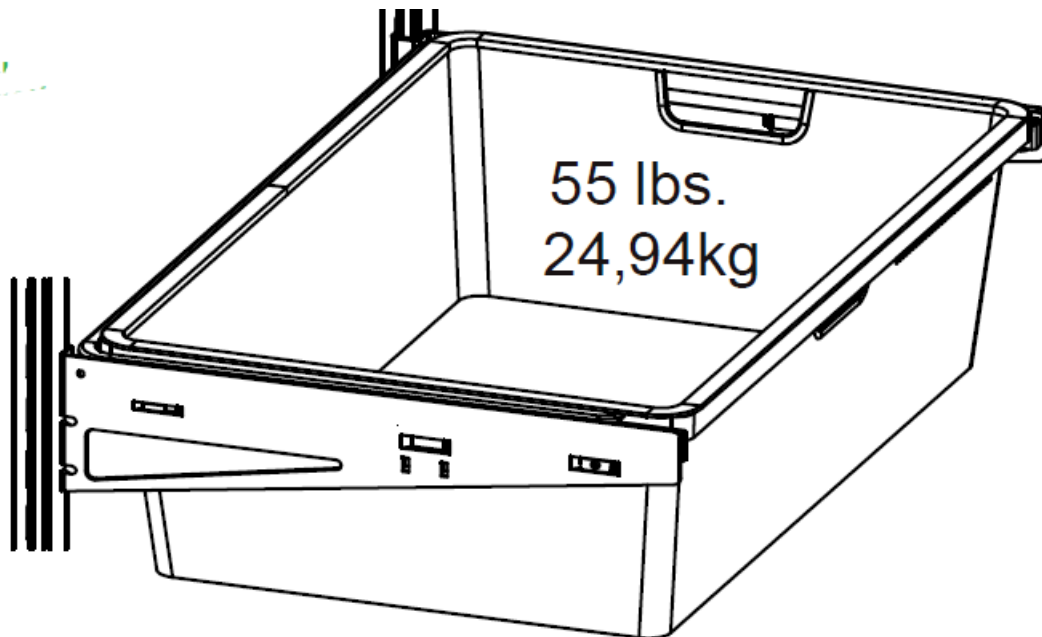
Please read and understand this entire manual before attempting to assemble, operate or install the product.

## WARNING

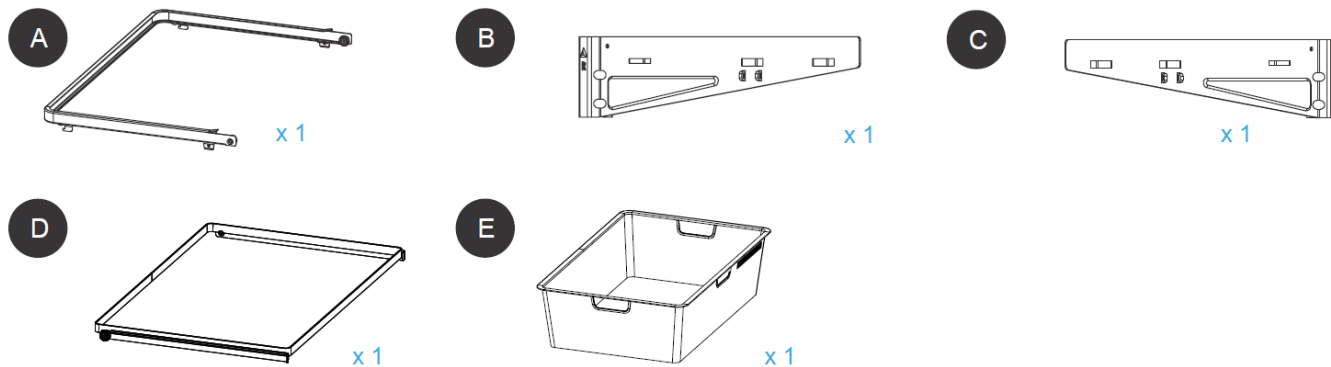
- Failure to follow instructions may cause system failure and cause serious bodily injury and/or damage to personal belongings.
- Do not overload unit.
- Do not climb or step on the unit.
- This system is designed for mounting on a wall.

## OPERATING INSTRUCTIONS

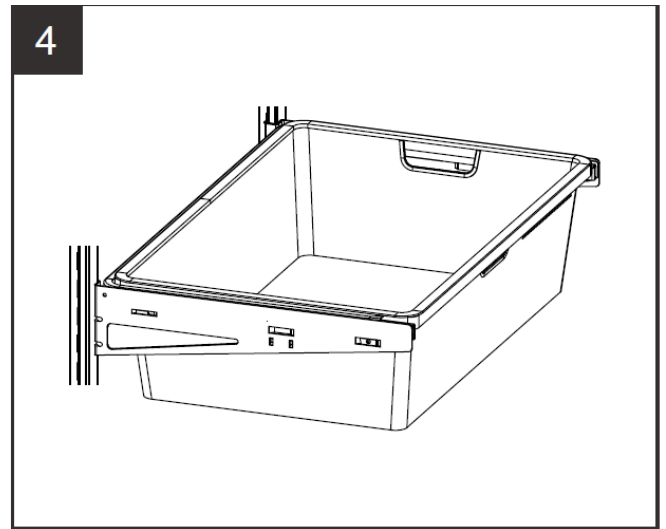
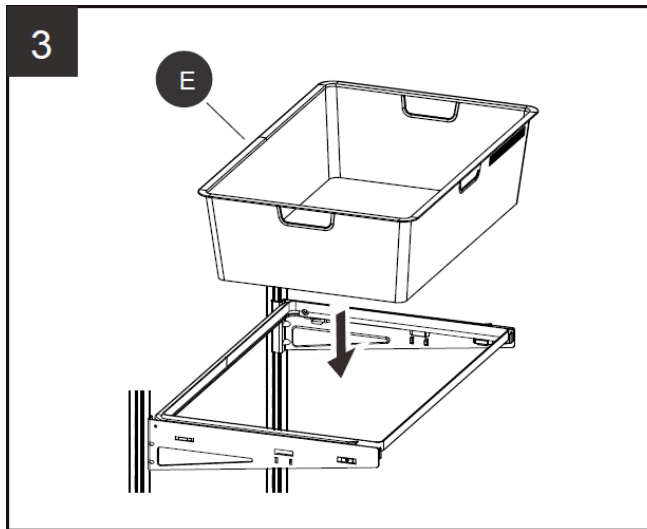
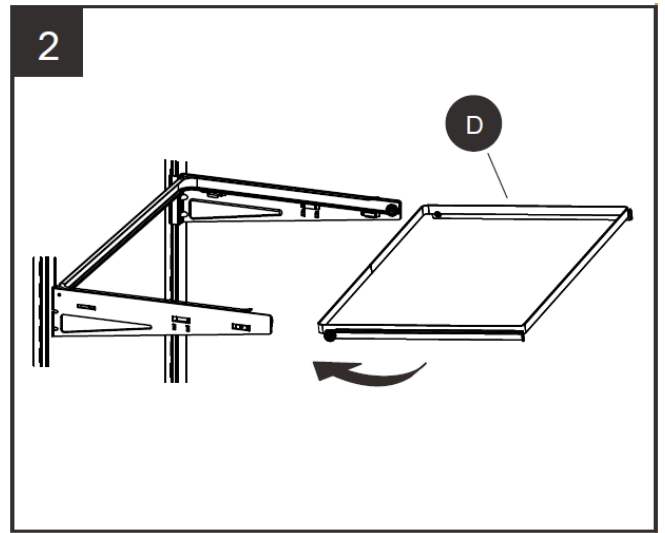
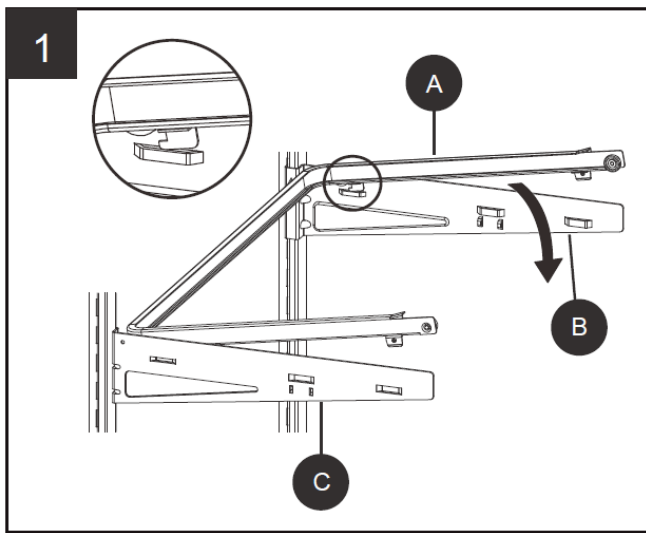
- This unit has been designed to support the maximum loads shown.
- Exceeding these load limits could cause sagging, instability, product collapse, and/or serious injury.



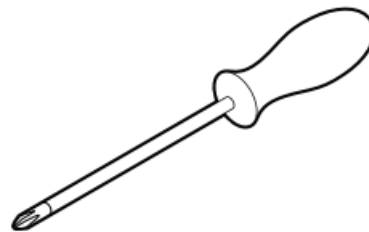
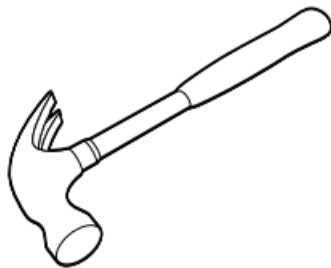
## PACKAGE CONTENTS



## INSTALLATION OVERVIEW



## TOOLS REQUIRED



## CARE AND MAINTENANCE

- Wipe clean using a damp cloth and a mild cleaner.
- Wipe dry with a clean cloth.


## WARRANTY

- This limited warranty covers the original purchase of this product used for normal commercial, personal, or household use. Origin21 warrants its products will be free from defects in materials and workmanship (normal wear and tear expected), for a period of one (1) year from the date of purchase, except as provided below. As the exclusive remedy under this warranty, Style Selections will repair or replace any defective furniture

component.

- This warranty does not apply to damage caused by fire, accident, negligence, misuse, use other than as stated in product instructions, improper cleaning or other circumstances not directly attributable to defects in materials and workmanship.
- Materials are warranted for one year from date of purchase. Proof of purchase is required in the form of a receipt (copy or original) to validate the warranty. THIS WARRANTY APPLIES ONLY TO THE U.S. AND CANADA.

## Documents / Resources

	<a href="#">Origin 21 WR2SMDK-16-W Small Mesh Drawer Kit</a> [pdf] Instruction Manual WR2SMDK-16-W Small Mesh Drawer Kit, WR2SMDK-16-W, Small Mesh Drawer Kit, Mesh Drawer Kit, Drawer Kit
---	---