

Contents [[hide](#)]

- [1 ORICO Y20 Solid State Drive](#)
- [2 What is in the Package](#)
- [3 Product Features](#)
- [4 Warranty Description](#)
- [5 Technical Support](#)
- [6 FCC](#)
- [7 Frequently Asked Questions](#)
- [8 Documents / Resources](#)
 - [8.1 References](#)



ORICO Y20 Solid State Drive



Specifications

- **Model:** ORICO Y20 SSD
- **Capacity:** 128GB/256GB/512GB/1TB/2TB/4TB
- **Product Type:** 2.5" SATA SSD
- **Interface:** SATA III
- **Dimension:** 100*70*7mm
- **Flash Type:** 3D NAND

Thank you for choosing ORICO products!

Please read this user manual carefully before using.

What is in the Package

- The Product * 1pc
- Screwdriver * 1pc
- Screw * 4pcs
- User Manual * 1pc

The product appearance, accessories and package may be optimized for better application or performance, which may result in inconsistencies with what shows in the user manual. Please refer to the actual product you receive for accurate information. We apologize for any inconvenience this may cause and appreciate your understanding. Please contact ORICO customer care team if any further concern.

Product Features

- **Advanced 3D NAND Technology**

Utilizes cutting-edge 3D NAND flash for improved reliability and endurance, offering optimized performance for everyday computing tasks.

- **Enhanced Speed and Performance**

Achieves sequential read speeds up to 500MB/s and write speeds up to 480MB/s (performance may vary based on capacity, host device, OS, and applications), offering faster speeds than traditional HDDs.

- **Durability and Stability**

Built with shockproof and anti-drop features, ensuring reliability. It operates quietly with low power consumption, high and low-temperature resistance, and delivers faster boot times and program loading.

- **Wide Compatibility**

Supports Windows 11/10/8 (32-bit and 64-bit), Vista (SP1+), XP (SP2+), macOS, and Linux, making it a versatile choice for various systems.

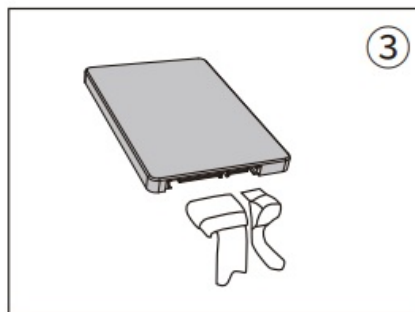
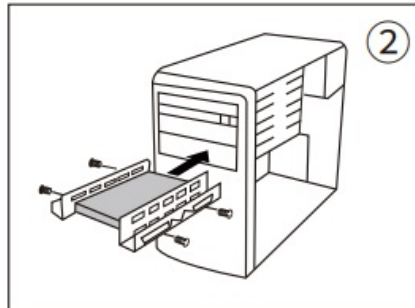
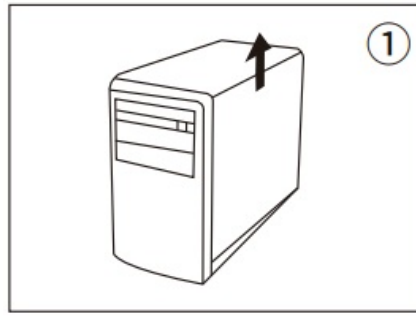
Quick Start Guide

Please refer to your system or device user manual for the location where the SSD is installed.

2.5 inch SATA 3.0 SSD installation guide

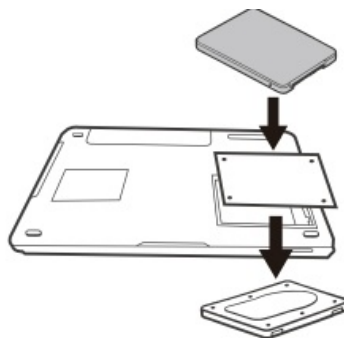
Install on desktop

1. Turn off the power of desktop, unplug the power cord, and open the chassis.
2. Choose the screw holes according to the chassis and fix the SSD in the chassis.
3. Please properly connect the SATA interface and power connector of the SSD and close the chassis.



Install on laptop

Turn off the power of the laptop, unplug the power cord and remove the battery, open the back cover, and install the SSD correctly.



Important Notes

To ensure user safety and prevent potential product damage, please follow the guidelines below.

1. Handling Precautions

- **Impact Resistance**

Compared to traditional HDDs, SSDs offer enhanced shock resistance and impact protection, ensuring greater data security. However, excessive impact or forceful collisions may still compromise internal components, potentially leading to detection failures, operational issues, or even physical deformation and cracks in the SSD casing. To maintain optimal performance and longevity, handle the SSD with care and avoid severe impacts.

- **Short Circuit Prevention**

Avoid contact between the SSD's interface circuit and any metal objects. Exposure to metallic surfaces or electrical surges may cause a short circuit, leading to hardware detection failures or operational malfunctions.

- **Disassembly and Tamper Protection**

Do not disassemble, modify, or damage the SSD, nor remove or tamper with the security label affixed to the product. Any unauthorized disassembly or label removal may void the product warranty, and the manufacturer will not be responsible for any resulting issues.

2. Installation Guidelines

- **Power Safety Precautions**

Before opening the computer's back cover, ensure that the device is completely powered off and disconnected from any power source, including the battery. Installing or removing an SSD while the power is on may result in severe hardware damage. While some systems support hot-swapping, we strongly recommend turning off the device before installation to prevent potential risks.

- **Installation Requirements**

- If replacing an existing SATA HDD with an SSD, you can reuse the existing SATA data cable and power connector.
- For first-time installation in a desktop PC, ensure you have the necessary components, including a SATA data cable, SATA power cable, 3.5-inch adapter bracket, and mounting screws.

For laptop installations requiring data migration, a USB-to-SATA adapter cable is recommended.

- **SATA Cable Length Limitation**

Using a SATA cable longer than 1 meter may lead to hardware detection issues or operational instability. Ensure the cable length meets standard requirements for

optimal performance.

- **Warranty Considerations**

Check your computer manufacturer's warranty terms before installing the SSD, as some manufacturers may restrict user-performed upgrades or disassembly.

- **SSD Formatting and Detection**

After installing the SSD, it must be correctly formatted before use. If the drive is not properly formatted, your computer or file management system may not recognize the SSD. Ensure to follow the correct steps to format the SSD in your system's disk management utility for it to be accessible.

3. Data Backup

The manufacturer does not guarantee the integrity of data stored on the SSD and is not liable for any direct or indirect losses resulting from data recovery. To prevent data loss due to unexpected circumstances, it is strongly recommended to back up important files to other storage devices.

4. SSD Capacity Disclaimer

The stated capacity is based on the decimal system (1GB = 1 billion bytes, 1TB = 1 trillion bytes). However, the actual usable capacity may be less due to formatting, partitioning, and the operating system's calculation method. Storage space availability will also vary depending on the operating environment.

Warranty Description

Warranty Policy

ORICO provides a limited warranty to the original end user or purchaser (hereafter referred to as "you"), ensuring that the product is free from major manufacturing defects under the conditions outlined in this agreement. The warranty period is determined by the shorter of the following:

- From the date of purchase of the originally sealed package until the end of the limited warranty period specified in ORICO's warranty policy.
- Until the SSD reaches its Total Bytes Written (TBW) threshold, as specified in the product's data sheet.

If a valid proof of purchase is not available, the warranty period will be determined based on the product's manufacturing date.

Limited Warranty Warranty Period and TBW

The warranty period and TBW threshold vary based on capacity and protocol:

	Capacity	Warranty Period	TBW
NAND Flash	128GB	3 Years	37.5TBW
	256GB		75TBW
	512GB		150TBW
	1TB		300TBW
	2TB		600TBW
	4TB		1200TBW

Note: The warranty period for the SSD is 3 years or TBW, whichever comes first.

Warranty Void

Any of the following conditions will not be covered by the free warranty:

1. Out of warranty period orTBW (Total Write Bytes).
2. No valid product warranty card or valid proof of purchase.
3. The serial number on the product has been altered, lost, moved, or unrecognizable.
4. Unauthorized disassembly, modification, or repair of product.
5. The product interface is abnormal due to external forces such as bending and deformation, and the product casing is damaged or deformed.
6. Failures caused by failure to use or maintain in accordance with the instructions for use, such as products with unstable power supply voltage or exceeding the normal voltage range.
7. Damage caused by force majeure (such as flood, fire, earthquake, lightning, typhoon, etc.), man-made damage (such as knocking, falling, breaking, slamming, etc.), computer interface failure, human error (such as falling water, loss, improper storage, etc.) or other abnormal use.
8. Damage caused by exposure or storage in an unsuitable environment, including high-risk, low-temperature or high-humidity environments.

Technical Support

If you have any problems during use, you can contact the ORICO Customer Service Center for consultation or help, or you can contact the dealer of the product you purchased directly.

ORICO Customer Service Center Website: www.orico.cc ORICO Customer Service Email: supports@orico.com.cn

Authenticity and Warranty Check

For ORICO products purchased by consumers in physical stores or online channels, the authenticity and warranty information can be obtained by the following methods.

1. Mobile: Directly scan the anti-counterfeiting QR code on the product.
2. PC: Log in to ORICO's official website www.orico.cc, click on Technical Support → Authenticity Query → Enter Anti-Counterfeiting Query Code on the navigation bar.

FCC

This device complies with part 15 of the FCC Rules. Operation is subject to the following two conditions:

1. This device may not cause harmful interference, and
2. This device must accept any interference received, including interference that may cause undesired operation.

Declaration

SHENZHEN ORICO TECHNOLOGIES CO., LTD., all rights reserved.

Thank you so much for purchase ORICO product. Please refer to this manual when using orico product or experienced issues. Additionally, please kindly contact ORICO customer care team if any concern.

ORICO® is registered trademark of SHENZHEN ORICO TECHNOLOGIES CO., LTD.. Any other product, trademark, service or company mentioned herein is trademark or registered trademark of the respective owners.

This manual is for reference only and it's not a guarantee.

ORICO Technologies Co., Ltd. reserve all rights of maintenance to this manual and shall

not liable for any lost or damage resulting from this manual. Please kindly contact orico customer care team when any concern. ORICO Technologies Co., Ltd shall not liable for compensation and maintenance of the following conditions.

- 1. Any special, incidental, indirect and secondary lost or damage.
- 2. Profit and revenue lost or damage.
- 3. Files, data, drive and device lost or damage.

Note: Compensation for lost or damage resulting from this manual or orico product shall not exceed the payment of your purchase to this product.

Frequently Asked Questions

- **Q: What should I do if my computer does not recognize the SSD after installation?**

A: Ensure that the SSD is correctly formatted in your system’s disk management utility. If the issue persists, contact ORICO customer care for further assistance.

- **Q: Can I install the SSD while my device is powered on?**

A: It is strongly recommended to install or remove the SSD while the device is powered off to avoid hardware damage.

Documents / Resources

	ORICO Y20 Solid State Drive [pdf] User Manual Y20 Solid State Drive, Y20, Solid State Drive, State Drive, Drive
---	--

References

- [User Manual](#)

drive, ORICO, Solid State Drive, State Drive, Y20, Y20 Solid State
ORICO Drive

Leave a comment

Your email address will not be published. Required fields are marked *

Comment *

Name

Email

Website

☐ Save my name, email, and website in this browser for the next time I comment.

Post Comment

Search:

Search

[Manuals+](#) | [Upload](#) | [Deep Search](#) | [Privacy Policy](#) | [@manuals.plus](#) | [YouTube](#)

This website is an independent publication and is neither affiliated with nor endorsed by any of the trademark owners. The "Bluetooth®" word mark and logos are registered trademarks owned by Bluetooth SIG, Inc. The "Wi-Fi®" word mark and logos are registered trademarks owned by the Wi-Fi Alliance. Any use of these marks on this website does not imply any affiliation with or endorsement.