



# ORICO RTL50 5.0 Bluetooth Adapter User Manual

[Home](#) » [ORICO](#) » [ORICO RTL50 5.0 Bluetooth Adapter User Manual](#) 



## RTL5.0 5.0 Bluetooth Adapter User Manual

Thank you so much for your purchase of our ORICO product!  
Please refer to this manual carefully before using the product!

### What's in the box?

#### Contents

- [1 Introduction](#)
- [2 Specifications](#)
- [3 Instructions](#)
- [4 Declaration](#)
- [5 FCC](#)
- [6 Documents / Resources](#)
- [7 Related Posts](#)

### Introduction

ORICO BTA-508 is a qualified adapter with USB port and highly-integrated RTL8761BUV chip. It is also a product of high sensitivity, fast transmission and stable connection with devices. It supports backwards compatibility. It is designed with unique ORICO finned cover. Supported **Deveices**: bluetooth headphone/blue-tooth keyboard/bluetooth mouse/bluetooth speaker/cellphone/printer/computer/game controller.Supported **Profiles**: serial interface, object push, file transfer, LAN access, PAN, audio gateway, HID, keyboard, mouse, HCRP(printer cable replacement), bluetooth low power, PIM, A2DP, AVRCP, Bluetooth low energy.

## Specifications

Name	5.0 Bluetooth Adapter
Model	ORICO BTA-508
Control Chip	RTL8761BUV
Material	Black/White Plastic
Function	Bluetooth Expansion
Bluetooth version	Bluetooth 5.0
Functional Parameter	Supporter BR/ BLEatfIX Support Bluetooth EDR99TX Receiving Sensitivity:-94 dBm Receiving Sensitivity:-98 dBm Receiving Sensitivity:-106dBm
Working Range	20m (in open space)
Dimension	24.6*16.77*0mm
Application	Bluetooth headset, Bluetooth keyboard, Bluetooth mouse, Bluetooth speaker, mobile phone, printer, computer, game controller.
Supported System	Windows 7/8/10
Package	Paper Card+Blister
Accessories	User Manual

## Instructions

**Step 1:** Enter orico.com.cn in the search engine and enter ORICO's official website

**Step 2:** Choose the language



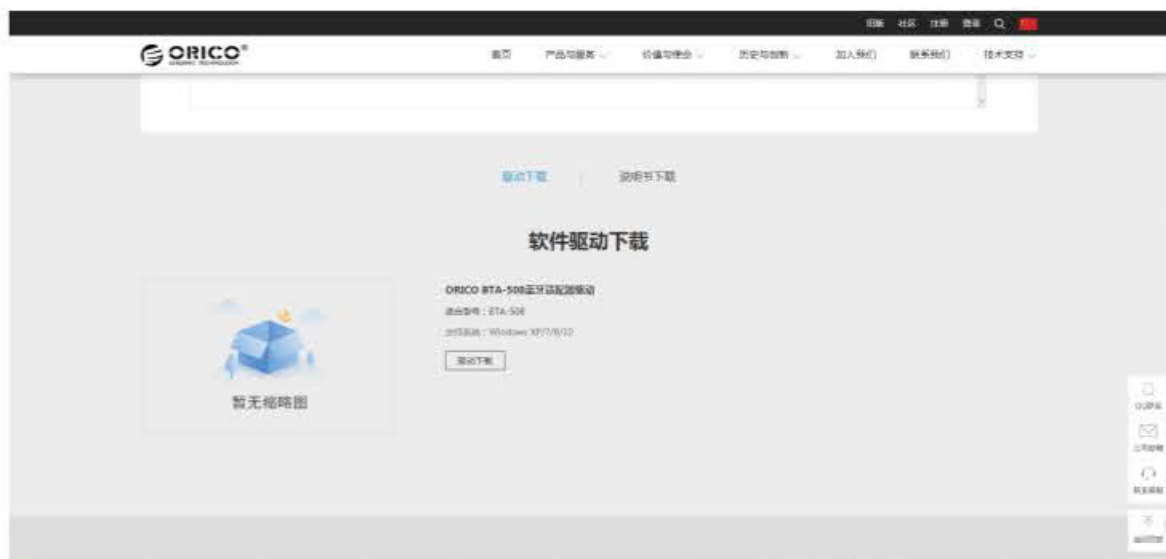
**Step 3:** Select Technical support – click Driver download



**Step 4:** Enter the keyword to find BTA-508



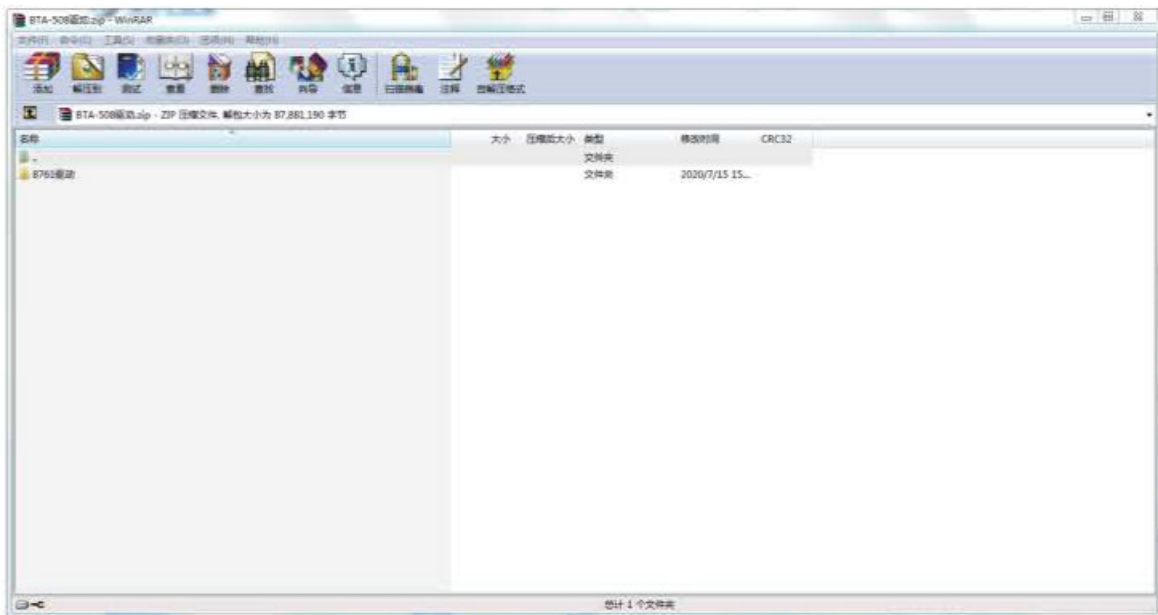
**Step 5:** Click drive download



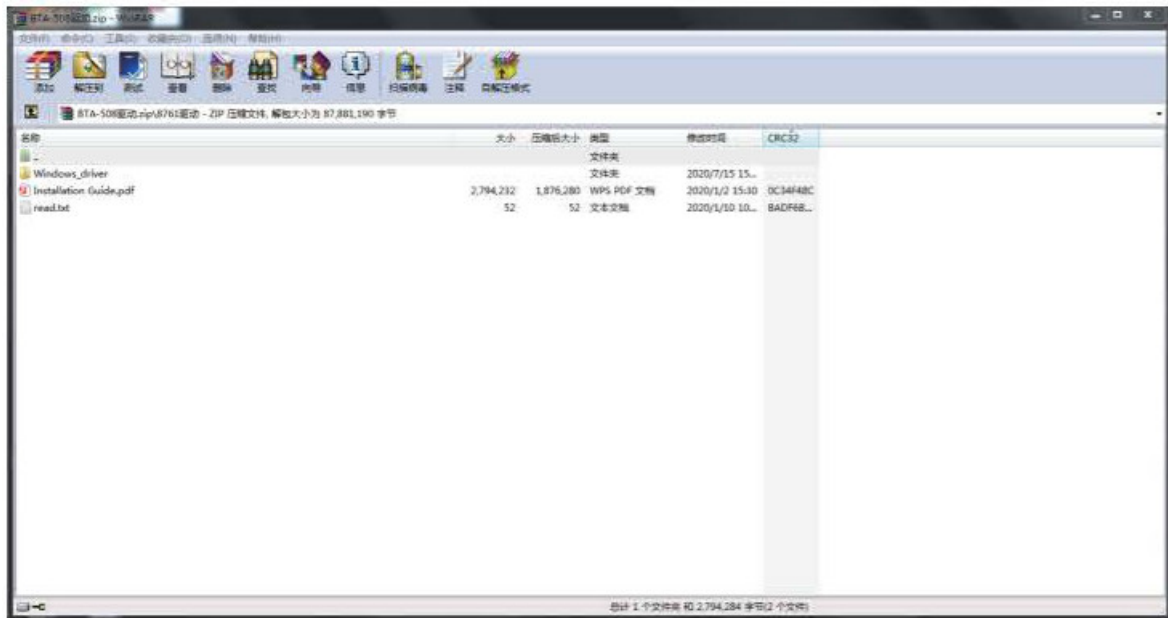
**Step 6:** Double-click to open the downloaded file.



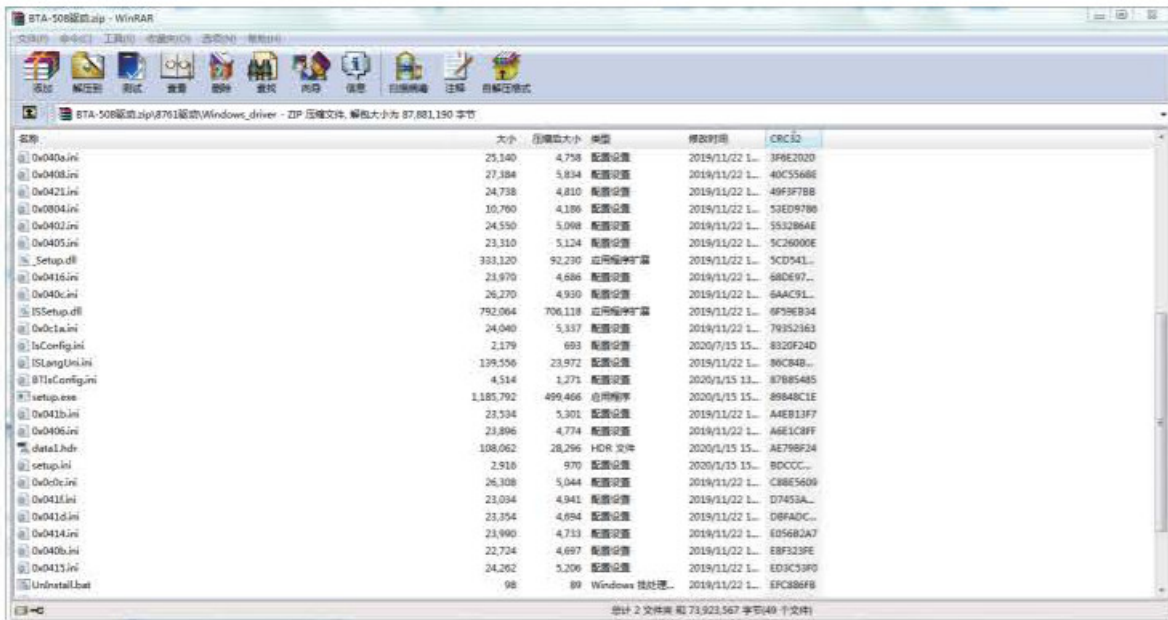
**Step 7:** Select the 8761 drive folder



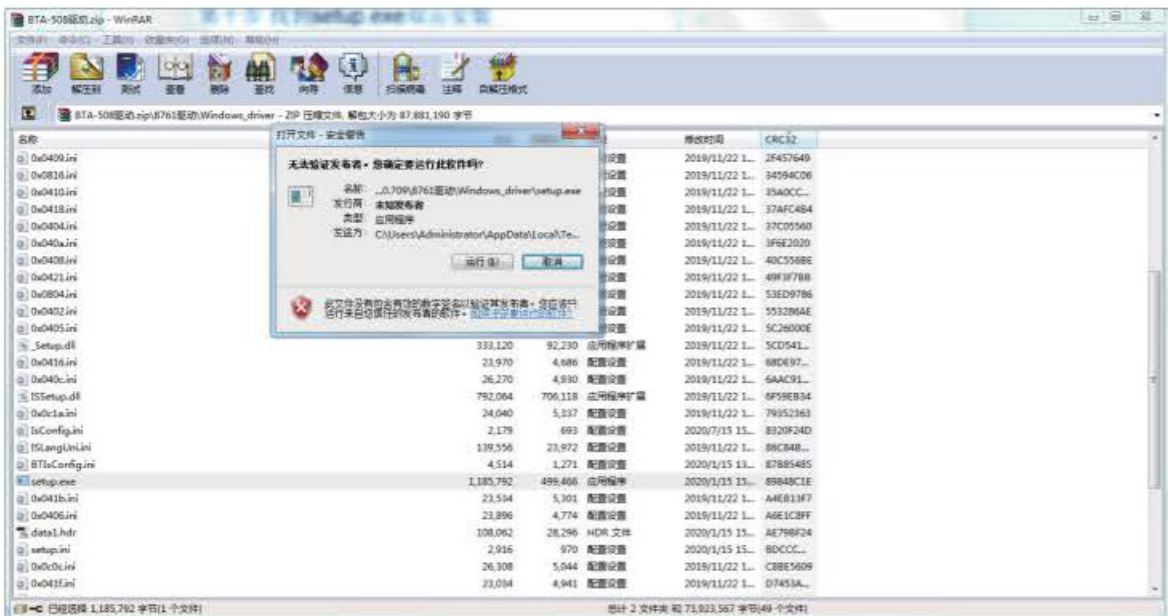
**Step 8:** Click the Windows\_Driver folder



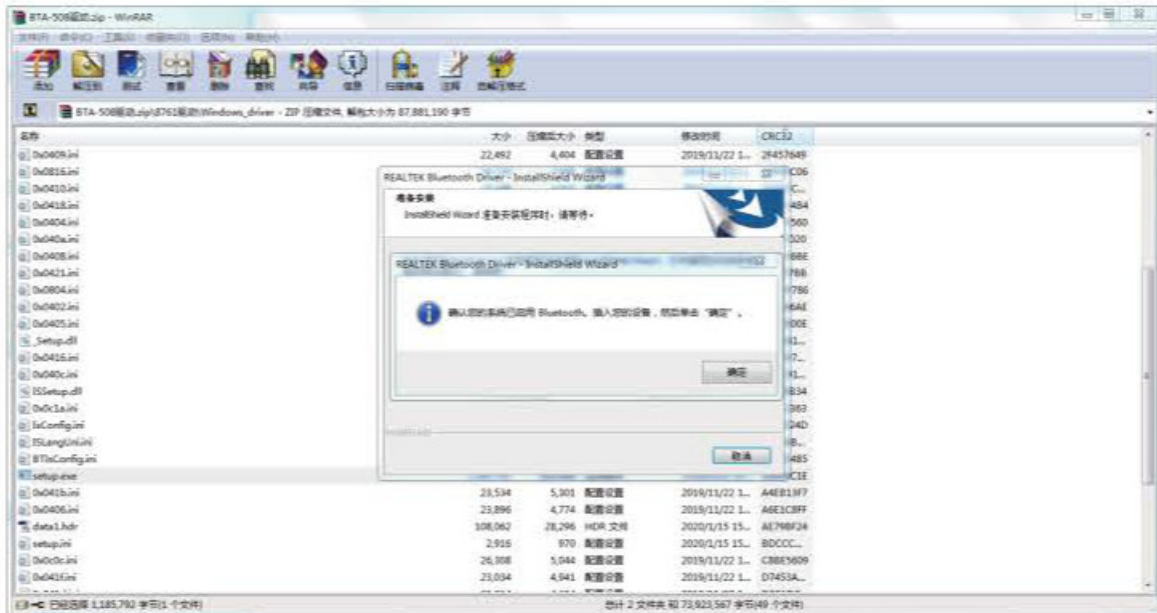
Step 9: Find setup.exe, then double-click install



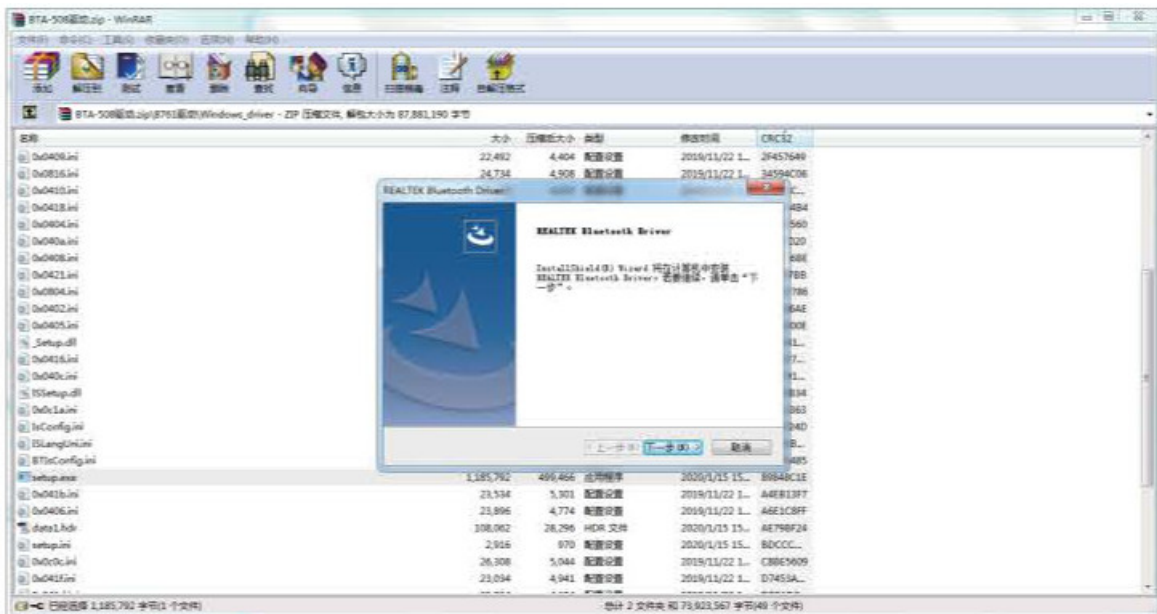
Step 10: Run the software



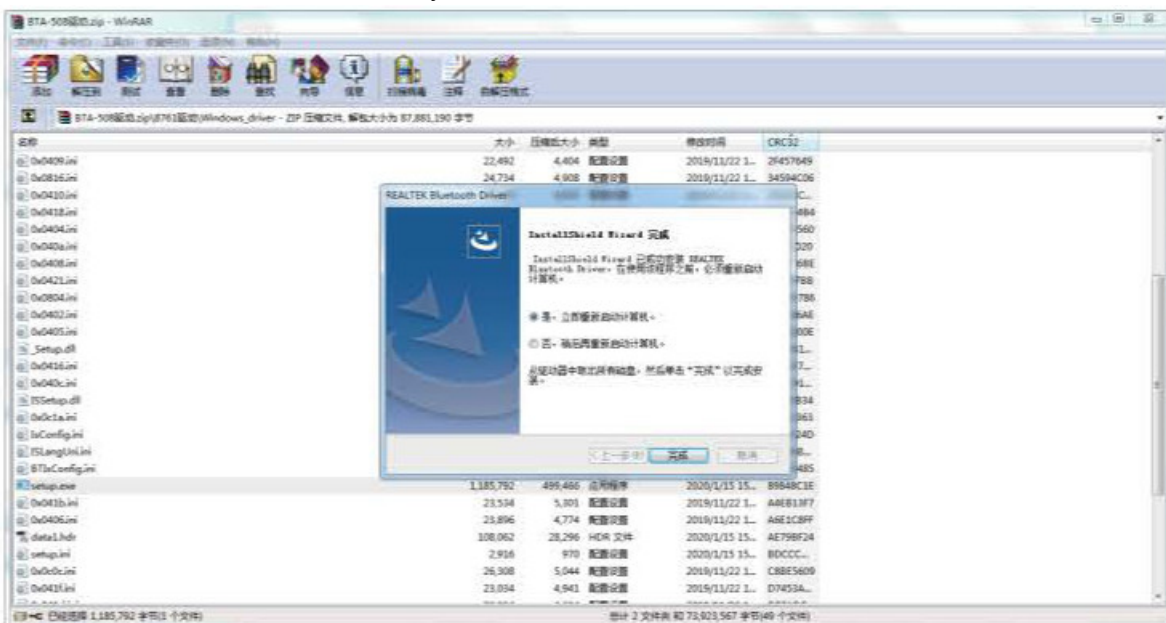
Step 11: Insert the Bluetooth device and click OK



Step 12: Click “Next step”



Step 13: Click Finish and restart immediately



## Declaration

All rights of this product, manual, and trademark are reserved by ORICO Technologies Co. Ltd.

Thank you so much for your purchase of our ORICO product. Please refer to this manual when using ORICO® is registered mark of ORICO Technologies Co., Ltd. All other product names, marks, service names, and company names mentioned in this manual are owned by their respective owners. The information mentioned in this manual is for reference only, ORICO Technologies Co., Ltd reserves the right to modify any information in this manual at any time without prior notice. Unless otherwise specified, this instruction manual is only used as a guide, and all statements and information in this manual do not constitute any form of warranty.

ORICO Technologies Co., Ltd shall not compensate for any special, incidental, indirect, or secondary damages caused by using the contents of this manual and the products described in this manual, or for any loss of profits, data, goodwill, or expected savings. Within the scope permitted by the related laws, the maximum liability of ORICO Technologies Co., Ltd for your losses which caused by the products described in this manual (except in cases involving personal injury) is limited to the amount you paid for the product.

## FCC

This device complies with Part 15 of the FCC Rules.

Operation is subject to the following two conditions:

1. This device may not cause harmful interference, and
2. This device must accept any interference received, including interference that may cause undesired operation.

Changes or modifications to this unit not expressly approved by the party responsible for compliance could void the user's authority to operate the equipment.

**NOTE:** This equipment has been tested and found to comply with the limits for a Class B digital device, pursuant to Part 15 of the FCC Rules.

These limits are designed to provide reasonable protection against harmful interference in a residential installation. This equipment generates, uses, and can radiate radio frequency energy and, if not installed and used in accordance with the instructions, may cause harmful interference to radio communications. However, there is no guarantee that interference will not occur in a particular installation. If this equipment does cause harmful interference to radio or television reception, which can be determined by turning the equipment off and on, the user is encouraged to try to correct the interference by one or more of the following measures:

- Reorient or relocate the receiving antenna.
- Increase the separation between the equipment and receiver.
- Connect the equipment into an outlet on a circuit different from that to which the receiver is connected.
- Consult the dealer or an experienced radio/TV technician for help.

This device and its antenna(s) must not be co-located or operation in conjunction with any other antenna or transmitter.

### Radiation Exposure Statement

The device has been evaluated to meet general RF exposure requirements. in portable exposure condition without restriction.

## Documents / Resources



[ORICO RTL50 5.0 Bluetooth Adapter](#) [pdf] User Manual  
RTL50, 2A3F2-RTL50, 2A3F2RTL50, RTL50 5.0 Bluetooth Adapter, Bluetooth Adapter,  
Adapter

[Manuals+](#)