

# ORICO M.2 RGB Series SSD Enclosure User Manual

[Home](#) » [ORICO](#) » ORICO M.2 RGB Series SSD Enclosure User Manual 



## M.2 RGB Series SSD Enclosure User Manual

Thank you for choosing ORICO products! Please read this user manual carefully before using it.

### Contents

- [1 About this product](#)
- [2 Feature](#)
- [3 How to use](#)
- [4 Declaration](#)
- [5 Documents / Resources](#)
- [6 Related Posts](#)

### About this product

This SSD enclosure is specially designed for M.2 SSD, with aluminum alloy material, high transmission speed, and high thermal performance provided by an internal thermal fin, bringing you an easy and convenient storage experience. Satisfy diversified storage demands, no matter whether working or entertaining.

### Feature

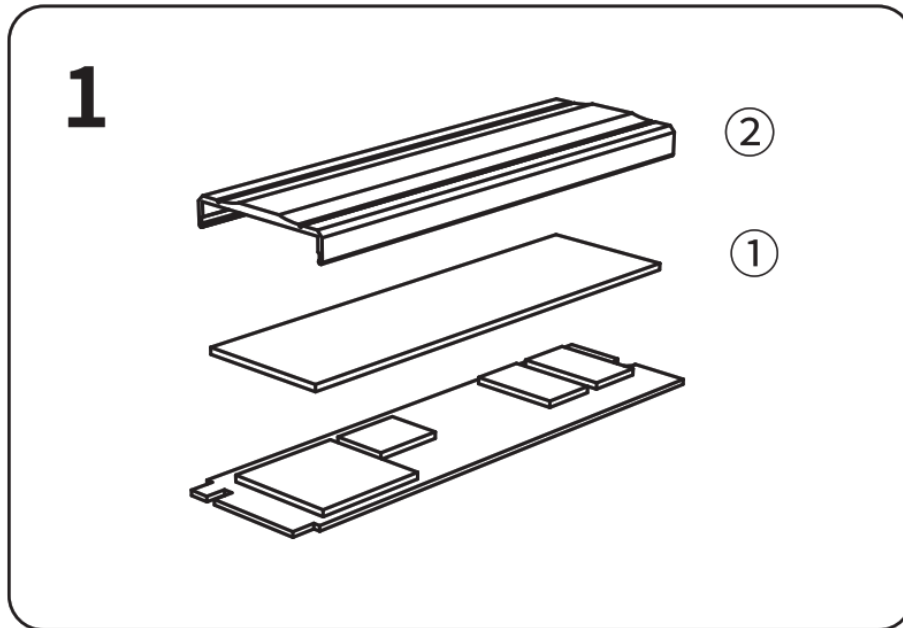
1. Compatible with M.2 NVMe SSD of 2230, 2242, 2260, and 2280.
2. The 10-minute auto-sleep setting helps to prolong the service life of your hard drive.
3. Applicable to PC, smartphone, laptop, smart TV, PS4, etc.
4. Compatible with Windows / Mac OS / Linux / Android systems.

## What's in the box

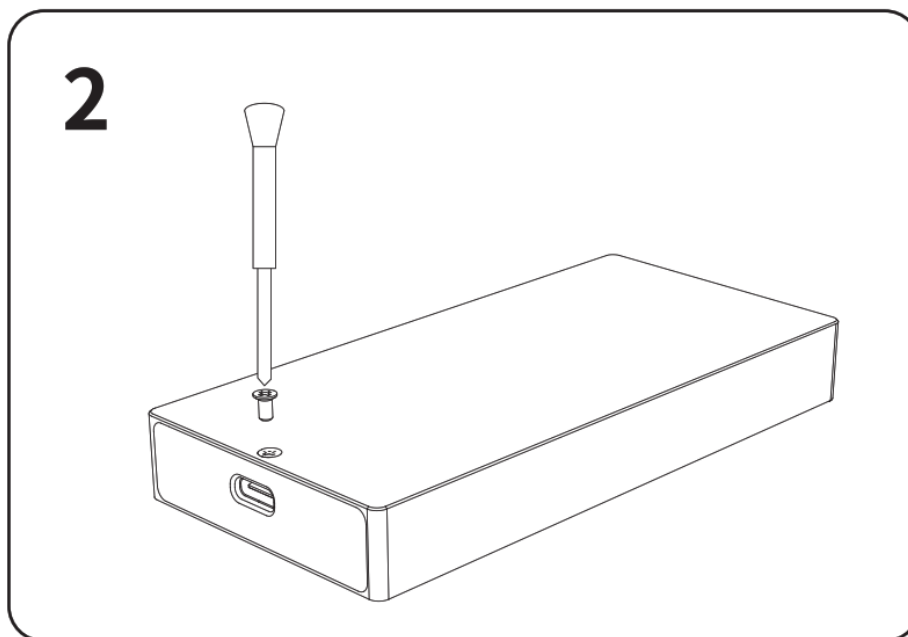
1 x M.2 SSD Enclosure 1 x Thermal Pad 1 x Data Cable 1 x User Manual	1 x Thermal Fin 1 x Silicone Screw 1 x Screwdriver
---	--

## How to use

The illustration is only for your reference, subject to real products.  
Please stick the silicone and aluminum alloy pad to the SSD.

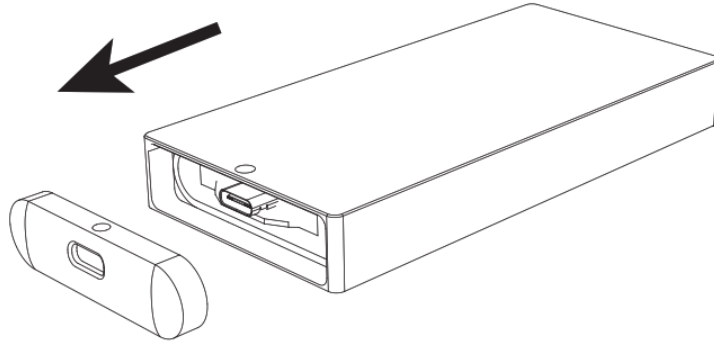


Unscrew the back cover.



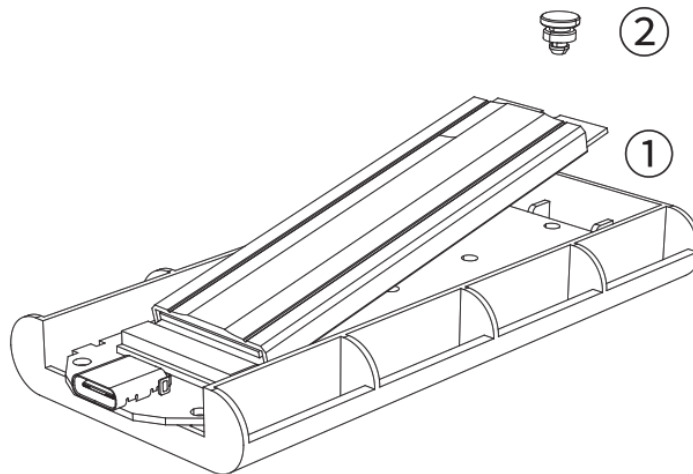
Remove the top cover and take the SSD tray out.

**3**



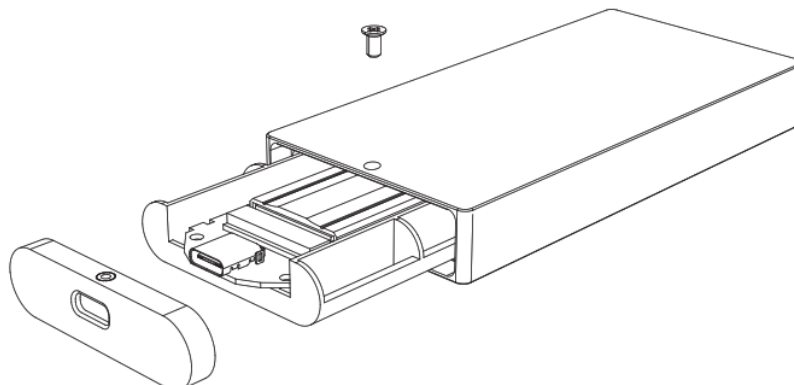
Insert SSD in and fixed SSD with silicone plugs.

**4**

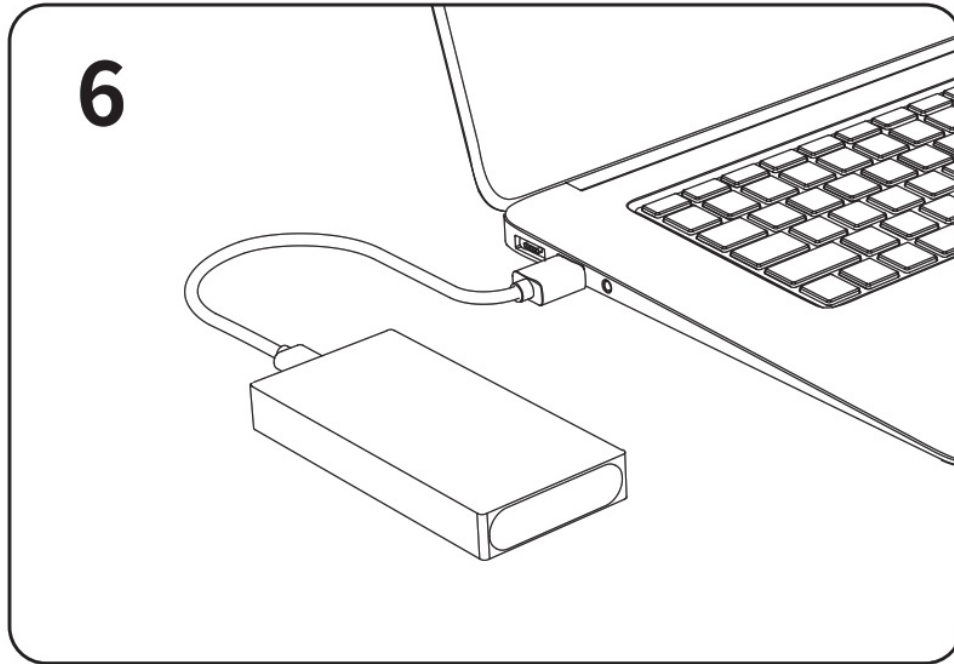


Put the SSD tray in and the top cover back and tighten the screw.

**5**



Waiting to be connected.



### **Always remove devices safely**

Please make sure the computer has finished saving and stop accessing it before removing it. Removing a drive while it's still transferring or saving data may cause damage to your drive or its data inside.

#### **Notice**

1. The hard drive is delicate. Please read the manual carefully before use and install it correctly by following the manual.
2. A new hard drive needs to be initialized before use, or it cannot be recognized.
3. Please do not hit, throw, or puncture the product, and avoid dropping, squeezing, or bending the product.
4. Avoid placing the product in high-temperature, low-temperature, humid, or dust environments
5. Please do not place this product in a corrosive environment, and do not use other chemical solutions to clean the product.
6. Avoid placing the product or accessories in devices with strong electromagnetic fields and keep the product away from magnetic equipment.
7. Keep the product and accessories away from children. Do not allow children to use the product without supervision.
8. Do not disassemble or repair the product and accessories by yourself. Please contact the authorized support center for help.

#### **Declaration**

ORICO Technologies Co., Ltd., all rights reserved. Thank you so much for purchasing the ORICO products. Please refer to this manual when using orico products or experiencing issues. Additionally, please kindly contact the ORICO customer care team if any concerns.

ORICO® is a registered trademark of ORICO Technologies Co., Ltd.. Any other product, trademark, service, or company mentioned herein is a trademark or registered trademark of the respective owners.

This manual is for reference only and it's not a guarantee. ORICO Technologies Co., Ltd. reserve all rights of maintenance to this manual and shall not be liable for any lost or damage resulting from this manual. Please kindly contact the orico customer care team when any concerns.

ORICO Technologies Co., Ltd shall not liable for compensation and maintenance of the following conditions.

- 1. Any special, incidental, indirect, and secondary loss or damage.
- 2. Profit and revenue lost or damaged.
- 3. Files, data, drives, and devices lost or damaged.

**Note:** Compensation for loss or damage resulting from This manual or orico product shall not exceed the payment of your purchase of this product.

**FCC**


This device complies with part 15 of the FCC Rules. Operation is subject to the following two conditions:

- 1. This device may not cause harmful interference, and
- 2. this device must accept any interference received, including interference that may cause undesired operation.

**ORICO Technologies Co., Ltd.**  
**Hotline: 400-6696298**  
**Tel: 86-755-25196059**  
**: [www.orico.com.cn](http://www.orico.com.cn)**  
**Website: [www.orico.cc](http://www.orico.cc)**  
**mail: [supports@orico.com.cn](mailto:supports@orico.com.cn)**  
**A1903-1904**

**Company Add: 1903-1904, 14A, Zhonghaixin Innovation Industrial Park,  
no.12, Gan Lee Sixth Road, Gankeng Community, Jihua Street, Shenzhen, China**

**Documents / Resources**

 RGB系列/RGB Series M.2 固态硬盘盒 M.2 SSD Enclosure  使用說明 User Manual	<a href="#">ORICO M.2 RGB Series SSD Enclosure</a> [pdf] User Manual M.2, RGB Series, SSD Enclosure, RGB Series SSD Enclosure, M.2 RGB Series SSD Enclosure, Enclosure
--	---