



## ORICO CP Series Hard Drive Enclosure User Manual

[Home](#) » [ORICO](#) » ORICO CP Series Hard Drive Enclosure User Manual 

### Contents

- [1 ORICO CP Series Hard Drive Enclosure](#)
- [2 About this product](#)
- [3 Feature](#)
- [4 What's in the box](#)
- [5 Specifications](#)
- [6 How to use](#)
- [7 Always remove devices safely](#)
- [8 Warranty Conditions](#)
- [9 EU Declaration of Conformity](#)
- [10 WEEE](#)
- [11 Documents / Resources](#)
  - [11.1 References](#)
- [12 Related Posts](#)



**ORICO CP Series Hard Drive Enclosure**

**Dear customer,**

Thank you for purchasing our product. Please read the following instructions carefully before first use and keep this user manual for future reference. Pay particular attention to the safety instructions. If you have any questions or comments about the device, please contact the customer line.

- ✉ [www.alza.co.uk/kontakt](mailto:www.alza.co.uk/kontakt)
- ☎ +44 (0)203 514 4411
- Importer Alza.cz a.s., Jankovcova 1522/53, Holešovice, 170 00 Praha 7, [www.alza.cz](http://www.alza.cz)

**About this product**

The portable hard drive enclosure series are applicable for 2.5-inch SATA HDD/SSD and 3.5 inch SATA HDD. With superior material, high transmission speed tool-free installation design, and high thermal performance, bringing you easy and convenient storage experience. Satisfy diversified storage demands, no matter working or entertaining.

**Feature**

- Tool free installation ensures fast installation and exchange.
- Support SATA 3.0 and UASP protocols.
- 10-mins intelligent sleep function extends lifespan effectively.
- Be compatible with Windows, Mac OS and Linux.

**What's in the box**

- 1 x Hard Drive Enclosure
- 1 x Data Cable
- 1 x Power Adapter (only 3.5 inch SSD enclosure included)

- 1 x User Manual

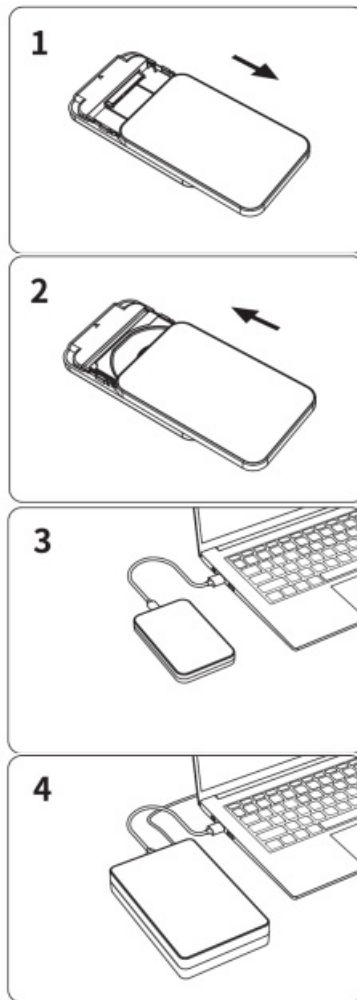
## Specifications

<b>Product Name</b>	2.5 inch Hard Drive Enclosure	
<b>Product Model</b>	CP25U3	CP25C3
<b>Color</b>	Red, Black	
<b>Dimensions</b>	129 x 80 x 14.3mm	
<b>Input Port</b>	SATA 3.0	
<b>Output Port</b>	Micro-B 3.0 Type-C	
<b>Transfer Rate</b>	5Gbps	6Gbps
<b>System Supported</b>	Windows, Mac OS, Linux	

<b>Product Name</b>	3.5 inch Hard Drive Enclosure	
<b>Product Model</b>	CP35C3	
<b>Color</b>	Red, Black	
<b>Dimensions</b>	187 x 118 x 32mm	
<b>DC IN</b>	12V 2A	
<b>Input Port</b>	SATA 3.0	
<b>Output Port</b>	Type-C	
<b>Transfer Rate</b>	6Gbps	
<b>System Supported</b>	Windows, Mac OS, Linux	

## How to use

The illustration is only for your reference.



1. Slide the back cover open.
2. Put the SATA HDD/SSD in and slide back.
3. 2.5-inch SSD enclosure: Connect computer.
4. 3.5-inch SSD enclosure: Turn the power on and connect the computer.

### **Always remove devices safely**

Please make sure the computer has finished saving and stop accessing before removing. Remove a drive while it's still transferring or saving data may cause damage to your drive or its data inside.

### **Notice**

- Hard drive is delicate. Please read the manual carefully before use and install it correctly by following the manual.
- New hard drive needs to be initialized before use, or it cannot be recognized.
- If you need a product with a power adapter, please use the power adapter specified by our company.
- Please do not hit, throw, or puncture the product, and avoid dropping, squeezing, or bending the product.
- Avoid placing the product in high-temperature, low-temperature, humid or dust environment.
- Please do not place this product in corrosive environment, and do not use other chemical solutions to clean the product.
- Avoid placing the product or accessories in devices with strong electromagnetic fields and keep the product away from magnetic equipment.

- Keep the product and accessories away from children. Do not allow children to use the product without supervision.
- Do not disassemble or repair the product and accessories by yourself. Please contact authorized support center for help.
- If you have any questions during the use of this product, please feel free to contact your dealer or ORICO Customer Service Center.

## **Warranty Conditions**

- A new product purchased in the Alza.cz sales network is guaranteed for 2 years. If you need repair or other services during the warranty period, contact the product seller directly, you must provide the original proof of purchase with the date of purchase.
- The following are considered to be a conflict with the warranty conditions, for which the claimed claim may not be recognized:
  - Using the product for any purpose other than that for which the product is intended or failing to follow the instructions for maintenance, operation, and service of the product.
  - Damage to the product by a natural disaster, the intervention of an unauthorized person or mechanically through the fault of the buyer (e.g., during transport, cleaning by inappropriate means, etc.).
  - Natural wear and aging of consumables or components during use (such as batteries, etc.).
  - Exposure to adverse external influences, such as sunlight and other radiation or electromagnetic fields, fluid intrusion, object intrusion, mains overvoltage, electrostatic discharge voltage (including lightning), faulty supply or input voltage and inappropriate polarity of this voltage, chemical processes such as used power supplies, etc.
  - If anyone has made modifications, modifications, alterations to the design or adaptation to change or extend the functions of the product compared to the purchased design or use of non-original components.

## **EU Declaration of Conformity**

**The above product has been tested in accordance with the standard(s) used to demonstrate compliance with the essential requirements laid down in the Directive(s):**

This product complies with the essential requirements for placing on the EU market under Directive 2014/30/EU and Directive 2011/65/EU including amendments 2015/863/EU.

## **WEEE**

This product must not be disposed of as normal household waste in accordance with the EU Directive on Waste Electrical and Electronic Equipment (WEEE – 2012/19 / EU). Instead, it shall be returned to the place of purchase or handed over to a public collection point for the recyclable waste. By ensuring this product is disposed of correctly, you will help prevent potential negative consequences for the environment and human health, which could otherwise be caused by inappropriate waste handling of this product. Contact your local authority or the nearest collection point for further details. Improper disposal of this type of waste may result in fines in accordance with national regulations.

## **Documents / Resources**









CP Series  
Hard Drive Enclosure

Over Thermal • Overvoltage • Overload • Overcurrent •  
Overcurrent • Overcurrent • Overcurrent • Overcurrent •  
Overcurrent • Overcurrent • Overcurrent • Overcurrent •

**[ORICO CP Series Hard Drive Enclosure](#)** [pdf] User Manual

CP Series Hard Drive Enclosure, CP Series, Hard Drive Enclosure, Drive Enclosure, Enclosure

## References

-  [Alza.sk – rýchly a pohodlný nákup odkiaľkoľvek | alza.sk](#)
-  [alza.at](#)
-  [alza.co.uk](#)
-  [alza.de](#)
-  [alza.hu](#)
-  [alza.sk](#)