




## Orbegozo SF 2140 2 In 1 Stand Fan Instruction Manual

[Home](#) » [Orbegozo](#) » Orbegozo SF 2140 2 In 1 Stand Fan Instruction Manual 

Orbegozo SF 2140 2 In 1 Stand Fan



## Contents

- 1 SAFETY INSTRUCTION
- 2 DESCRIPTION
- 3 ASSEMBLY INSTRUCTION
- 4 OPERATION
- 5 MAINTENANCE
- 6 GUARANTEE
- 7 Customer Support
- 8 Documents / Resources
  - 8.1 References

## SAFETY INSTRUCTION

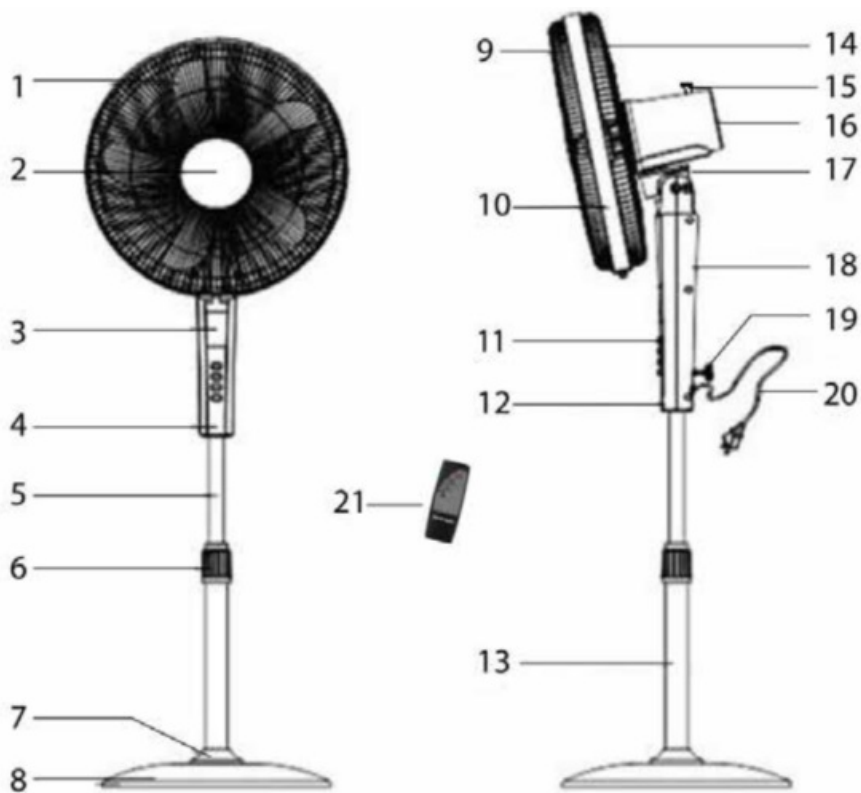
1. This appliance can be used by children aged from 8 years and above and persons with reduced physical, sensory or mental capabilities or lack of experience and knowledge if they have been given supervision or instruction concerning use of the appliance in a safe way and understand the hazards involved. Children must never play with the appliance. Cleaning and user maintenance must never be carried out by children without supervision.
2. Children should be supervised to ensure that they do not play with the appliance.
3. Keep the appliance and the cable cord out of the reach of children less than 8 years old.
4. **WARNING:** In order to ensure your children's safety, please keep all packaging (plastic bags, boxes, polystyrene etc.) out of their reach.
5. If the supply cord is damaged it must be repaired by the Authorized Service Agent.
6. Never pull on the cord when unplugging.

7. Do not use the unit with a damaged cord or plug, or if it is not working properly.
8. Do not handle the appliance with wet hands.
9. Never immerse the appliance in water or any other liquid.
10. Make sure the appliance has been unplugged before cleaning.
11. This appliance must be installed following the national regulations for electrical installations.
12. This appliance is for household use only.
13. In case that you need a copy of the instruction manual, you can find it in [www.orbegozo.com](http://www.orbegozo.com)
14. **WARNING:** In case of misuse, there is a risk of possible injury.
  - Make sure to keep the fan far away from humidity, chemical articles and oil.
  - Never insert fingers, pencils or any other object through the grille when fan is running.
  - Disconnect the plug when moving from one location to another.
  - Disconnect plug when removing guards for cleaning.
  - Be sure fan is on a stable, even surface when operating to avoid overturning.
  - DO NOT use fan in window. Rain may create an electrical hazard. Do not leave the fan operating adjacent to an area where water has been collected to avoid the potential of electrical hazard.
  - Use fan only for intended use as described in instruction manual.
  - Unplug from outlet when not in use, when moving fan from one location to another, before putting on or taking off parts, and before cleaning.
  - Avoid contacting moving parts.
  - Do not let cord hang over edge of table or counter, or touch hot surfaces.
  - Do not hang or mount fan on a wall or ceiling.
  - While cleaning, be sure to not splash water and do not use oil, alcohol or chemical articles as they may cause distortion of fan body and cause electrical hazards.
  - Keep away from curtain; clothing or other something may affect the fan's working.
  - Turn off all switches and pull out power supply plug when you go out for long time.
  - Never use the fan before finishing assembly to avoid any hurts.

## DESCRIPTION

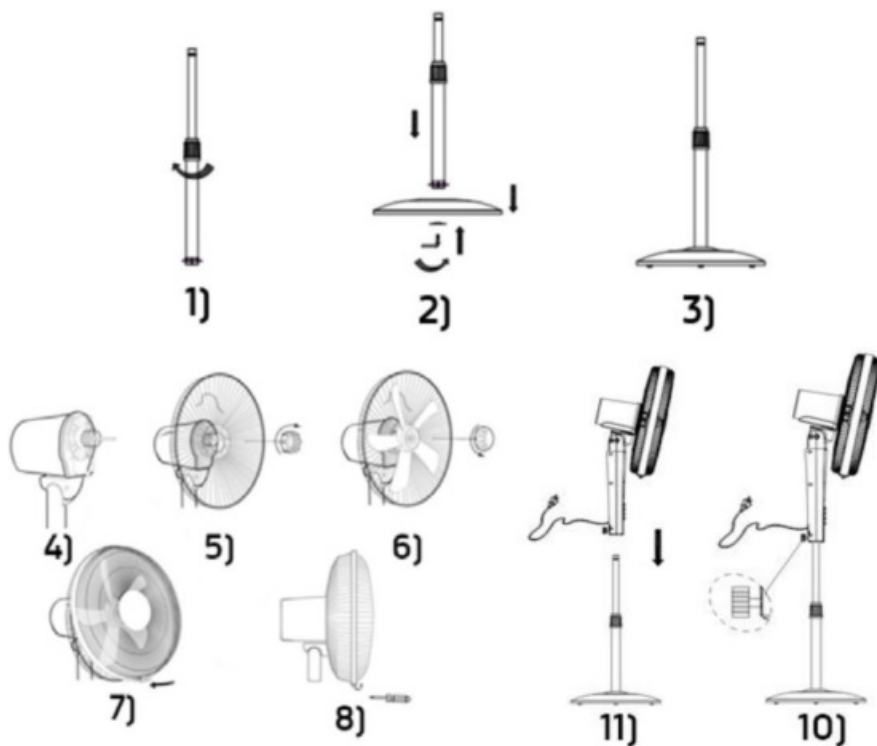
1. Blade
2. Front cover
3. Light indicators
4. Decorative lid
5. Inner tube
6. Height adjustment nut
7. Base cap
8. Base
9. Front grille
10. Fastening ring
11. Buttons
12. Front body
13. outer tube
14. Rear grille
15. swing switch

- 16. engine cover
- 17. Tilt adjustment
- 18. back of body
- 19. Screw
- 20. Wire
- 21. Remote control



## ASSEMBLY INSTRUCTION

1. Unscrew height adjustment nut and remove.
2. Put outer tube on the base and screw by under the base the supplied screw.
3. Adjust the height with nut of outer tube.
4. Unscrew the nut of frontal motor housing.
5. Place rear grill with handle upwards on frontal motor housing, fixing in pins of it. Screw previous nut and tighten it.
6. Insert blade in motor shaft and tighten blade's nut as it is shown in below picture.
7. Place frontal grill setting both grills with holding ring.
8. Tighten screw of holding ring to fix both grills.
9. Insert fan's body in inner tube.
10. Tighten the body's screw (18) to fix body to inner tube.

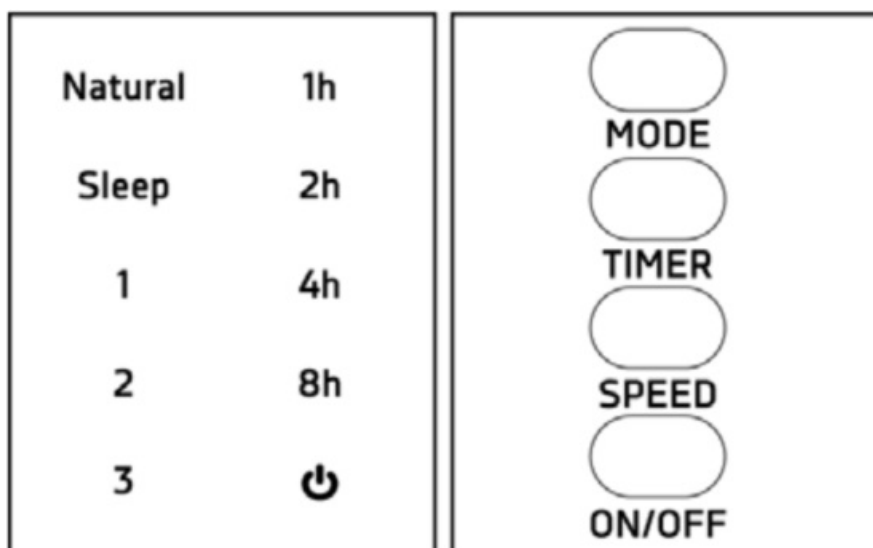


### For desktop fan

1. Insert the upper fan body into the base and tighten the screw (19).

### OPERATION

1. Plug the fan to mains.
2. Press ON/OFF button to connect the fan.
3. Press SPEED button to set Low, Middle or High speed.
4. Press MODE button (in remote control) to set normal, nature (this mode simulates the sea breeze, changing the ventilation power from low to high) or sleep mode (this mode changes the ventilation power softer than previous mode, even stopping sometimes).
5. Press TIMER button to start timer from 30 minutes to 7.5 hours. Each time you press button time will increase in 30 minutes until 7.5 hours.
6. Press oscillating knob to activate oscillation function. Pull it to deactivate function.
7. Tilt adjustment: before to set tilt, turn off the fan. Air flow can be adjusted to up or down moving the fan's head to up or down.



**Note:** The panel will remain illuminated for one minute after pressing its buttons. After this minute, the panel will turn off again to save energy.

## MAINTENANCE

To keep the fan in optimal conditions, clean the blade and grills once a month. To disassembly follow the otherwise process than before explained, always with unplugged fan.

1. Use the fan in dry place and free of excessive humidity and water.
2. Keep the clean fan, remove the dirt with damp cloth.
3. Do not use abrasive products or solvents to clean fan.
4. Before storing, clean it well and cover with plastic bag. Save it in a dry place.



### DISPOSAL OF OLD ELECTRICAL APPLIANCES

The European directive 2012/19/EU on Waste Electrical and Electronic Equipment (WEEE), requires that old household electrical appliances must not be disposed of in the normal unsorted municipal waste stream. Old appliances must be collected separately in order to optimize the recovery and recycling of the materials they contain, and reduce the impact on human health and the environment. The crossed out “wheeled bin” symbol on the product reminds you of your obligation, that when you dispose of the appliance, it must be separately collected. Consumers should contact their local authority or retailer for information concerning the correct disposal of their old appliance.

### DECLARATION OF CONFORMITY:

This device complies with the requirements of the Low Voltage Directive 2014/35/EU and the requirements of the EMC directive 2014/30/EU.

## GUARANTEE

This appliance is covered and is entitled to the legal guarantee in accordance with the legislation in force from the date of purchase. Keep the purchase receipt to be able to claim your right to the guarantee. To find the closest service to your location, contact through the following web link: <https://orbegozo.com/asistencia-tecnica/> For any type of query, doubt or incident, you can contact us through our email shown on the main page of this manual or through our technical assistance service at <https://orbegozo.com/contacto/> Orbegozo is not responsible for components and accessories that are subject to wear and tear due to use, as well

as perishable compounds or those that have deteriorated due to improper use. Nor will it be held responsible if the owner has technically modified the device. (Check the legal conditions on our website).

**ERP TECHNICAL SPECIFICATION  
REGULATION (EU) 206/2012 AND (EU) 2016/2282  
DIRECTIVE 2009/125/EC**

Description	Symbol	Value	Unit
Maximum fan flow rate	F	36,4	M <sup>3</sup> /min
Fan power input	P	38,9	W
Service value	SV	0,94	(M <sup>3</sup> /min)/W
Standby power consumption	P <sub>SB</sub>	0.1	W
Fan sound power level	L <sub>WA</sub>	59,1	dB (A)
Maximum air velocity	C	2,78	meters/sec
Measurement standard for service value	IEC 60879:2019		
Contact details for obtaining more information	Snifter S.A. Aveda Santiago 86, 30007, Murcia, Spain.		

## Customer Support

**Sonifer,S.A.**

Avenida de Santiago, 86 30007 Murcia España

[sonifer@sonifer.es](mailto:sonifer@sonifer.es) / [www.orbegozo.com](http://www.orbegozo.com)

Made in P.R.C.



## Documents / Resources

A small image of the Orbegozo SF 2140 2 In 1 Stand Fan, showing its adjustable stand and fan head.	<p><a href="#">Orbegozo SF 2140 2 In 1 Stand Fan</a> [pdf] Instruction Manual SF 2140 2 In 1 Stand Fan, SF 2140, 2 In 1 Stand Fan, Stand Fan, Fan</p>
--	---

## References

- [Orbegozo Electrodomésticos | Todo para tu hogar y cocina](#)
- [Asistencia técnica - Orbegozo Electrodomésticos](#)
- [Orbegozo Electrodomésticos | Todo para tu hogar y cocina](#)
- [Contacto - Orbegozo Electrodomésticos](#)
- [User Manual](#)

## **Manuals+. Privacy Policy**

This website is an independent publication and is neither affiliated with nor endorsed by any of the trademark owners. The "Bluetooth®" word mark and logos are registered trademarks owned by Bluetooth SIG, Inc. The "Wi-Fi®" word mark and logos are registered trademarks owned by the Wi-Fi Alliance. Any use of these marks on this website does not imply any affiliation with or endorsement.