

Orbegozo CP  
131132 Ceiling Fan  
With LED Light



# Orbegozo CP 131132 Ceiling Fan With LED Light Instruction Manual

[Home](#) » [Orbegozo](#) » Orbegozo CP 131132 Ceiling Fan With LED Light Instruction Manual 

## Contents

- [1 Orbegozo CP 131132 Ceiling Fan With LED Light](#)
- [2 SAFETY INSTRUCTIONS](#)
- [3 FAN COMPONENTS](#)
- [4 FAN INSTALLATION](#)
- [5 MAINTENANCE AND CLEANING](#)
- [6 DISPOSAL OF OLD ELECTRICAL APPLIANCES](#)
- [7 Documents / Resources](#)
  - [7.1 References](#)
- [8 Related Posts](#)



## Orbegozo CP 131132 Ceiling Fan With LED Light



Read this manual carefully before running this appliance and save it for reference to obtain the best results and ensure safe use.

- Scan this QR code to access to more information about this ceiling fan, including installation details. Or enter [www.orbegozo.com](http://www.orbegozo.com) and look for the model number in the website.



## SAFETY INSTRUCTIONS

Dear Customer, If you follow the recommendations contained in this Instruction Manual, our appliance will give you constant high performance and will remain efficient for many years to come. Read the operating instructions carefully before putting the appliance into operation and keep the instructions including the warranty, the receipt, and, if possible, the box with the internal packing. If you give this device to other people, please also pass on the operating instructions.

### General Safety Instructions

1. This appliance can be used by children aged 8 years and above and persons with reduced physical, sensory, or mental capabilities or lack of experience and knowledge if they have been given supervision or instruction concerning the use of the appliance in a safe way and understand the hazards involved. Children must never play with the appliance. Cleaning and user maintenance must never be carried out by children without supervision.
2. Children should be supervised to ensure that they do not play with the appliance.
3. Keep the appliance and the cable cord out of the reach of children less than 8 years old.
4. **WARNING:** To ensure your children's safety, please keep all packaging (plastic bags, boxes, polystyrene, etc.) out of their reach.
5. If the supply cord is damaged it must be repaired by the Authorized Service Agent.
6. Never pull on the cord when unplugging.
7. Do not use the unit with a damaged cord or plug, or if it is not working properly.
8. Do not handle the appliance with wet hands.
9. Never immerse the appliance in water or any other liquid.
10. Make sure the appliance has been unplugged before cleaning.
11. This appliance must be installed following the national regulations for electrical installations.
12. This appliance is for household use only.
13. In case you need a copy of the instruction manual, you can find it in [www.orbegozo.com](http://www.orbegozo.com).
14. **WARNING:** In case of misuse, there is a risk of possible injury.

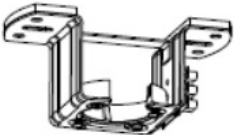

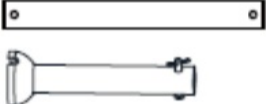



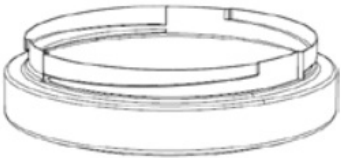
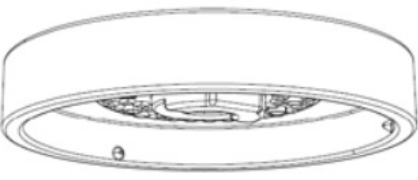
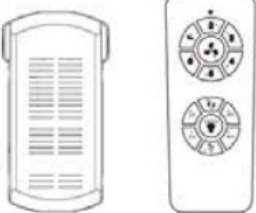
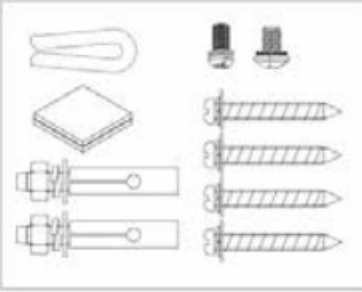
### Other specific safeguards

1. The method of disconnection from the mains supply must incorporate a switch or isolator with a minimum contact separation of 3 mm. on all poles.
2. Make sure that when the fan is fitted in the chosen position, there is no possibility of the rotating blades coming into contact with any object. Blades should be at least 2.30 m from floor when the fan is hung.
3. If you are installing more than one ceiling fan make sure that you do not mix fan blade sets, even though they

are from the same ceiling fan model.

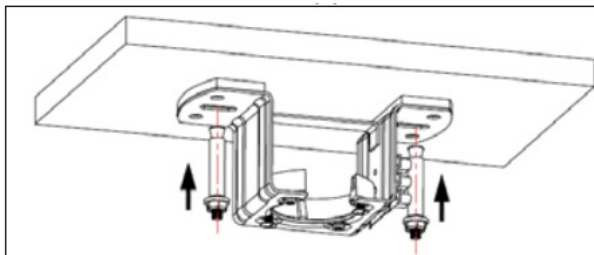
4. Before beginning, disconnect the power by removing a fuse or turning off the circuit breaker.
5. Once fan installation is completed make sure that all connections are secure to prevent the fan from falling.
6. The fan must be turned off and stopped before reversing the fan direction.
7. Check that the means of fitting the fan to the ceiling is capable of supporting the weight of the fan when in operation. (Minimum 50Kg.).

## FAN COMPONENTS

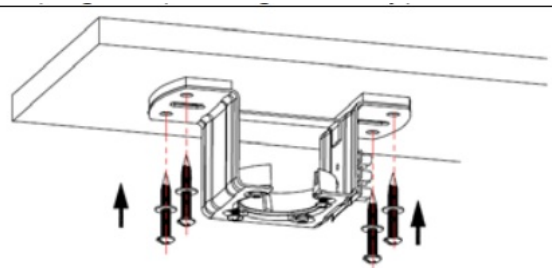
 Ceiling support	 Canopy	 Support bar
 Coupling cover	 Motor	 Blade
 Diffuser	 Lamp	 Remote + Controller
 Instalation bag		

## FAN INSTALLATION

1. Position the roof support with the two screws and plugs (depending on the type of roof)

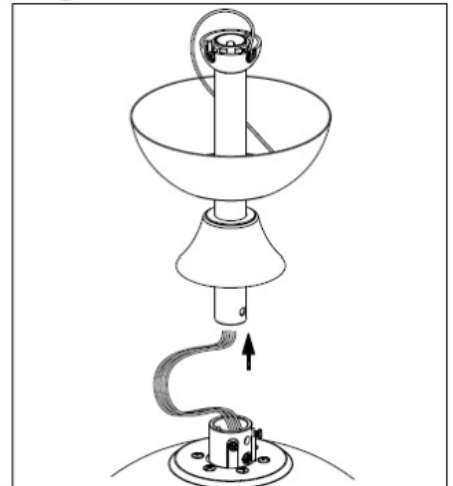
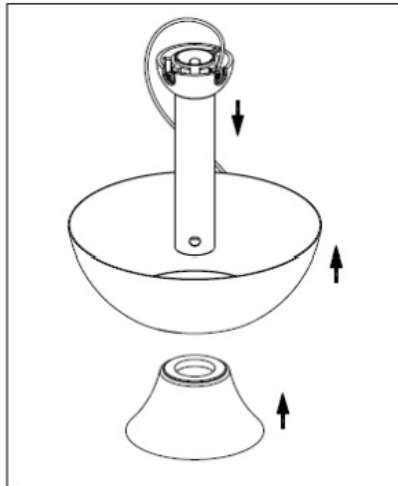
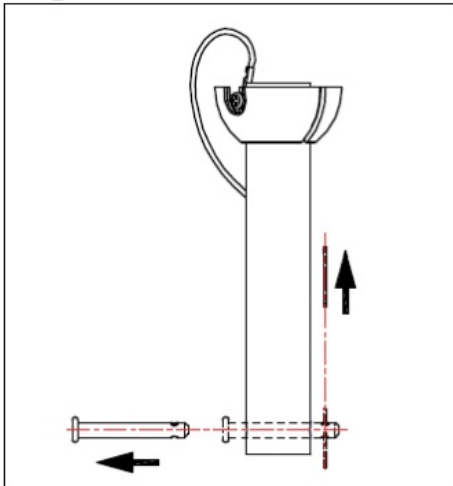


On concrete ceilings, drill two 8mm holes and insert the screw. Align the bracket with the hole, and then tighten the nut.

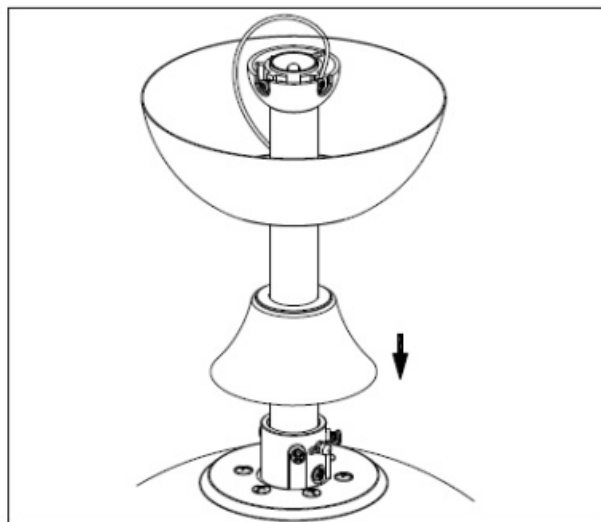
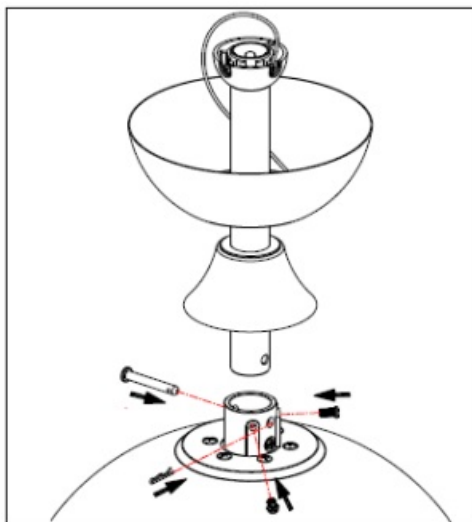


On wooden ceilings, fasten the bracket using the 4 screws.

2. Pass the support bar through the hole in the docking cover

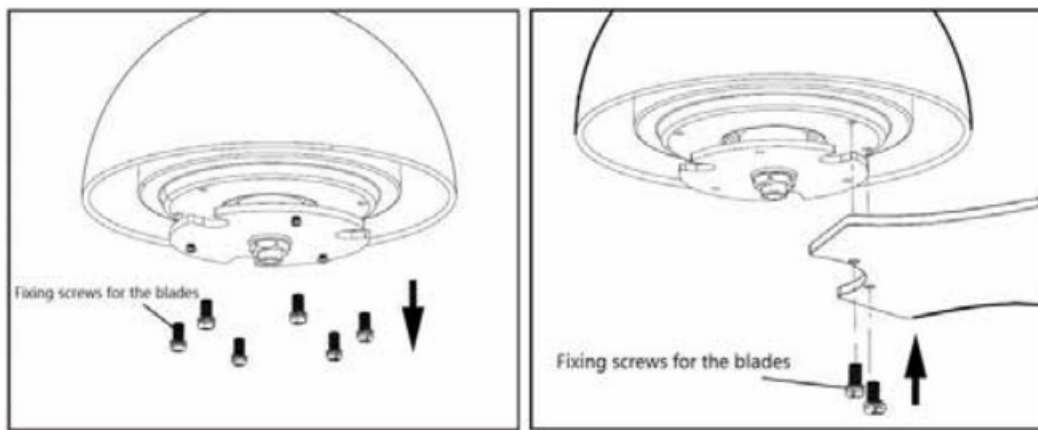


3. Loosen the motor joint bolts and attach the bar with cover to the motor using the flanged pin and bolts



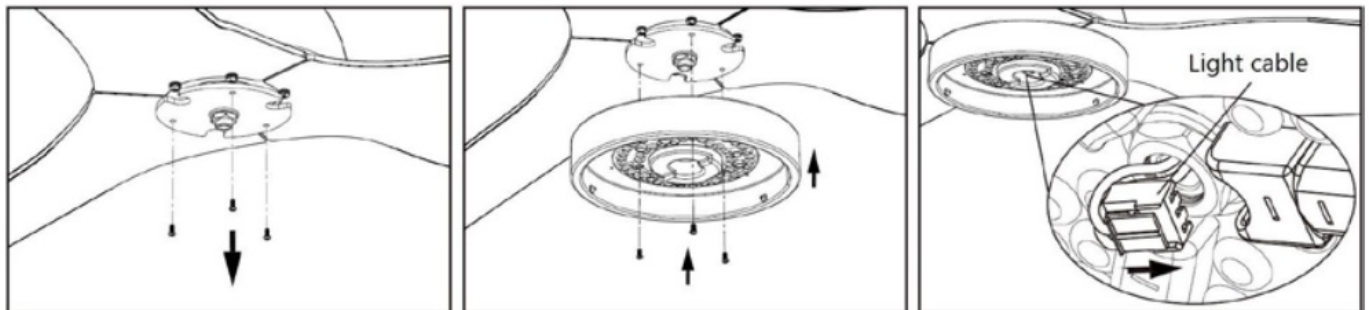
**ATTENTION:** It is very important to ensure that the flanged pin is correctly installed and secured. Poor fixing of the pin can cause the fan to fall.

## ASSEMBLY OF THE BLADE



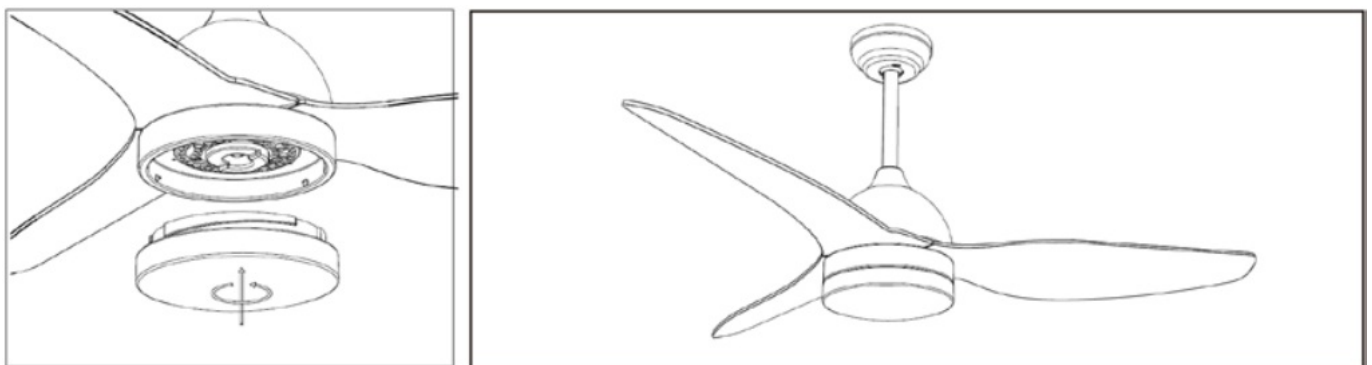
1. Remove the motor body fixing screws.
2. Fix the blades to the motor body with the fixing screws.

## LAMP INSTALLATION



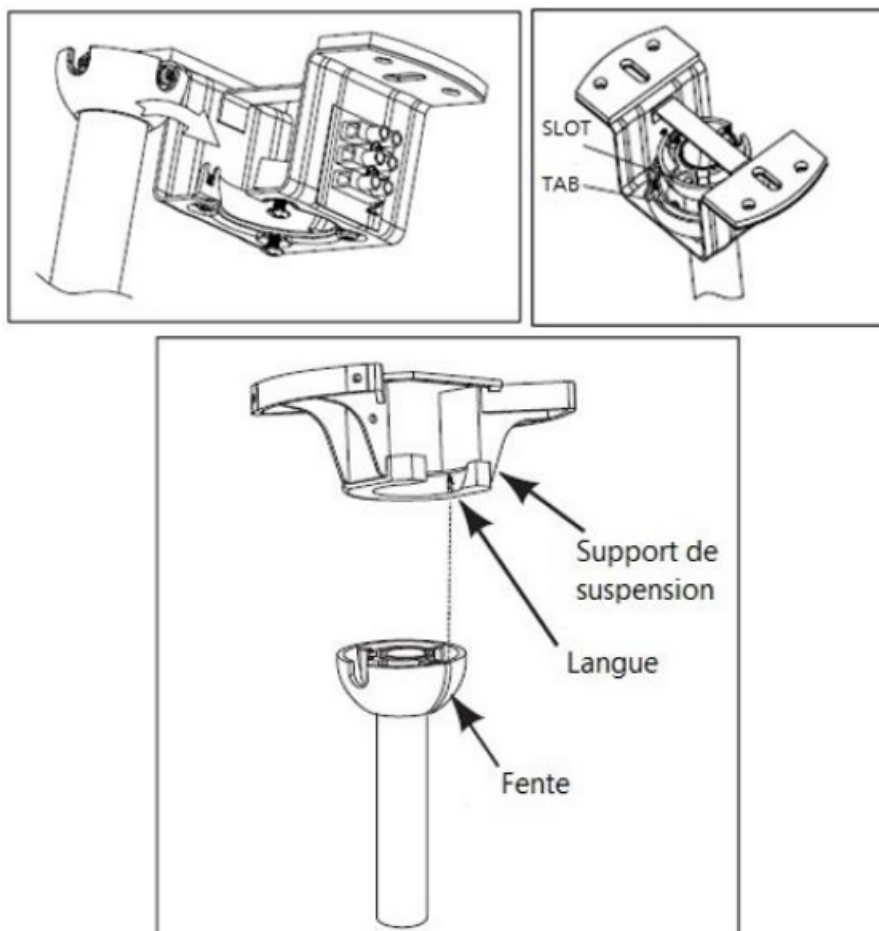
1. Remove the screws.
2. Fix the LED board with the screws.
3. After installing the LED board, insert the fan body connector into the light board.

## INSTALLING THE DIFFUSER



- Screw the diffuser clockwise

## HOW TO HANG THE FAN

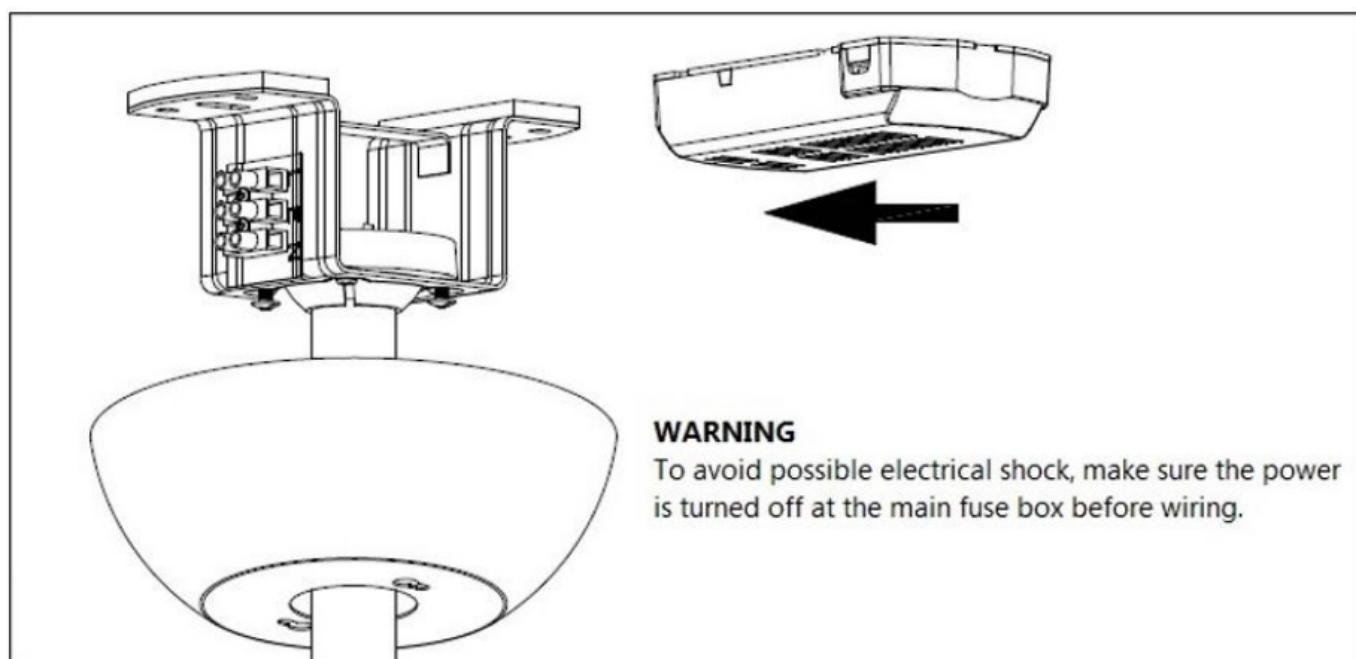


Carefully lift the fan and place the tilt support bar on the suspension bracket attached to the ceiling. Make sure the slot in the ball is properly aligned with the tab on the support bar.

#### **WARNING**

The fan must be hung with at least 230 cm of free space from the ground to the blades.

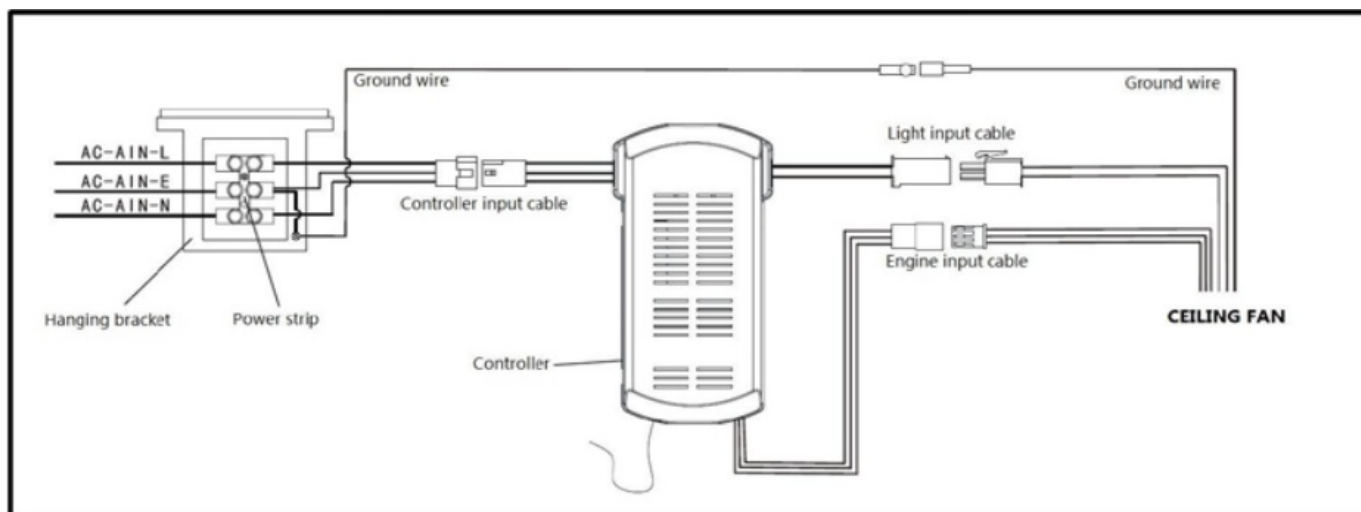
#### **REMOTE CONTROL CONNECTION**



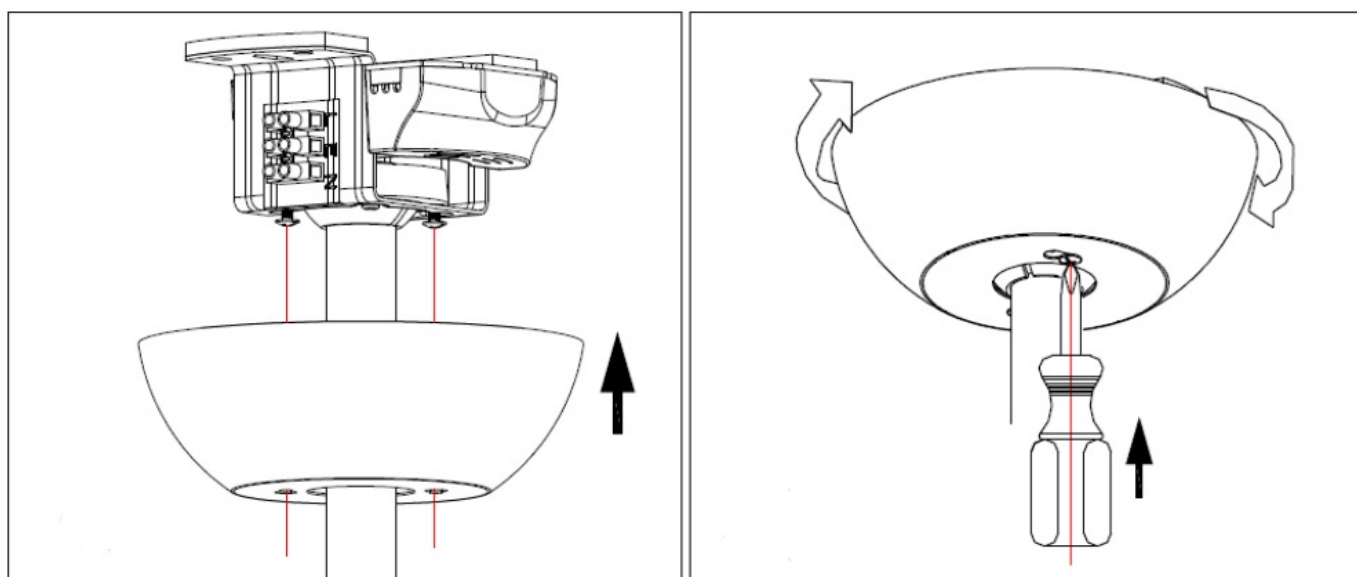
#### **WARNING**

To avoid possible electrical shock, make sure the power is turned off at the main fuse box before wiring.

#### **CONTROLLER WIRING DIAGRAM**



## ASSEMBLY OF THE CANOPY



Mount the bowl by tightening the two screws

## FAN BALANCING

Keep in mind that all ceiling fans are not created equal, even on the same model! Some may move more or less than others. Movement of a couple of centimeters is quite acceptable and does not imply that the fan will fall over. Although all blades are weighted and grouped by weight, it is impossible to completely eliminate wobble. This should not be considered a problem. Ceiling fans tend to move during operation because they are generally not rigidly mounted.

## BALANCING KIT

A balancing kit has been supplied to help reduce wobble. Keep the kit as it may come in handy if the fan wobbles in the future. The kit includes instructions on how to use it.

## OPERATING THE FAN

In order to turn on the fan press one of the speeds, 1/2/3/4/5/6, being 1 the lowest and 6 the highest one. You can change the speed anytime by pressing the desired level.





Turn off the ceiling fan



Turn on or off the light (in case that your ceiling fan includes light kit).



Breeze mode



This button changes the direction of rotation of the blades. In winter, select the upward rotation, as they will direct warm air trapped near the fan downward throughout the room. When it's hot, select the down spin and the blades will create a breeze that will spread throughout the room.



- **Press 1H:** the fan and light will turn off automatically after 1 hour.
- **Pulse 2H:** the fan and light will turn off automatically after 2 hours.
- **Pulse 4H:** the fan and light will turn off automatically after 4 hours.
- **Pulse 8H:** the fan and light will turn off automatically after 8 hours.

## MAINTENANCE AND CLEANING

- Change the battery by opening the battery compartment cover on the remote control, put in 2 AAA batteries and make sure the battery polarity matches the compartment diagram (Note: Battery is not included). Replace the compartment cover.
- Always make sure that the battery compartment has been properly closed.
- Do not expose the remote control to direct sunlight
- Do not try to recharge exhausted batteries. There are special rechargeable batteries, in which case it is clearly specified.
- Do not throw batteries into fire; there is a risk of explosion.
- Clean the fan with a soft, dry cloth. Never use scourers, abrasives or chemical cleaners. Avoid condensation coming into contact with electrical components.

## DISPOSAL OF OLD ELECTRICAL APPLIANCES

The European directive 2012/19/EU on Waste Electrical and Electronic Equipment (WEEE), requires that old household electrical appliances must not be disposed of in the normal unsorted municipal waste stream. Old appliances must be collected separately to optimize the recovery and recycling of the materials they contain and reduce the impact on human health and the environment. The crossed-out “wheeled bin” symbol on the product reminds you of your obligation, that when you dispose of the appliance, it must be separately collected. Consumers should contact their local authority or retailer for information concerning the correct disposal of their old appliances.

## DECLARATION OF CONFORMITY

This device complies with the requirements of the Low Voltage Directive 2014/35/EU and the requirements of the



**GUARANTEE**

This appliance is covered and is entitled to the legal guarantee under the legislation in force from the date of purchase. Keep the purchase receipt to be able to claim your right to the guarantee. To find the closest service to your location, contact us through the following web link: <https://orbegozo.com/asistencia-tecnica/> For any type of query, doubt or incident, you can contact us through our email shown on the main page of this manual or through our technical assistance service at <https://orbegozo.com/contacto/>





Orbegozo is not responsible for components and accessories that are subject to wear and tear due to use, as well as perishable compounds or those that have deteriorated due to improper use. Nor will it be held responsible if the owner has technically modified the device. Check the legal conditions on our website.

<b>ERP TECHNICAL SPECIFICATION REGULATION (EU) 206/2012 AND (EU) 2016/2282</b>			
<b>DIRECTIVE 2009/125/EC</b>			
<b>Description</b>	<b>Symbol</b>	<b>Value</b>	<b>Unit</b>
Maximum fan flow rate	F	170,60	M <sup>3</sup> /min
Fan power input	P	35,99	W
Service value	SV	4,74	(M <sup>3</sup> /min)/W
Standby power consumption	PSB	0,38	W
Fan sound power level	LWA	52	dB (A)
Maximum air velocity	C	2,53	meters/sec
Measurement standard for service value	IEC 60879:2019		
Contact details for obtaining more information	Sonifer S.A. Avda Santiago 86, 30007, Murcia, Spain.		

<b>ERP TECHNICAL SPECIFICATION REGULATION (EU) 206/2012 AND (EU) 2016/2282</b>			
<b>DIRECTIVE 2009/125/EC</b>			
<b>Description</b>	<b>Symbol</b>	<b>Value</b>	<b>Unit</b>
Maximum fan flow rate	F	170,60	M <sup>3</sup> /min
Fan power input	P	35,99	W
Service value	SV	4,74	(M <sup>3</sup> /min)/W
Standby power consumption	PSB	0,38	W
Fan sound power level	LWA	52	dB (A)
Maximum air velocity	C	2,53	meters/sec
Measurement standard for service value	IEC 60879:2019		
Contact details for obtaining more information	Sonifer S.A. Avda Santiago 86, 30007, Murcia, Spain.		

	<p><a href="#">Orbegozo CP 131132 Ceiling Fan With LED Light</a> [pdf] Instruction Manual CP 131132 Ceiling Fan With LED Light, CP 131132, Ceiling Fan With LED Light, LED Light, Light</p>
---	---

## References

-  [Orbegozo Electrodomésticos | Todo para tu hogar y cocina](#)
-  [Asistencia técnica - Orbegozo Electrodomésticos](#)
-  [Asistencia técnica - Orbegozo Electrodomésticos](#)
-  [Contacto - Orbegozo Electrodomésticos](#)
- [User Manual](#)

### Manuals+. [Privacy Policy](#)

This website is an independent publication and is neither affiliated with nor endorsed by any of the trademark owners. The "Bluetooth®" word mark and logos are registered trademarks owned by Bluetooth SIG, Inc. The "Wi-Fi®" word mark and logos are registered trademarks owned by the Wi-Fi Alliance. Any use of these marks on this website does not imply any affiliation with or endorsement.