

ORBBEC OPDK Perceptor DevKit



Contents [[hide](#)]

[1 Quick Start Guide](#)

[2 Mounting Guide](#)

[3 Documents / Resources](#)

[3.1 References](#)

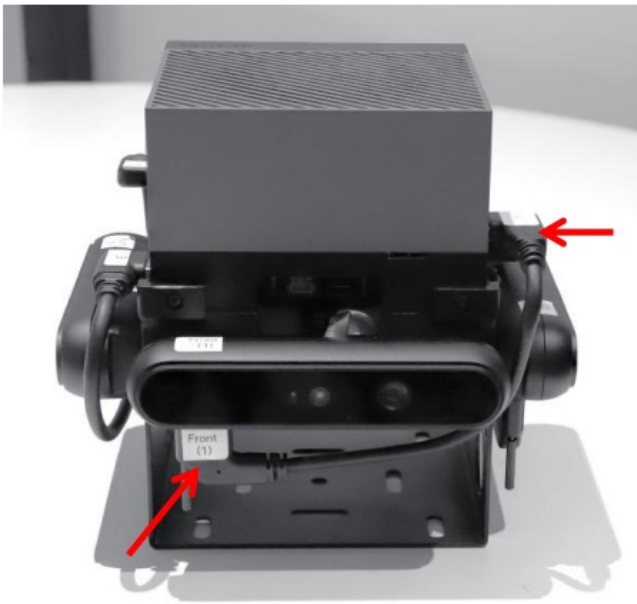
Quick Start Guide

Step 1: Connect a monitor and mouse-keyboard set to the Jetson AGX Orin



Step 2: Plug in USB cables for Gemini 335L cameras

Plug in cable 1-1 (type C to C) for camera 1 (Front camera)



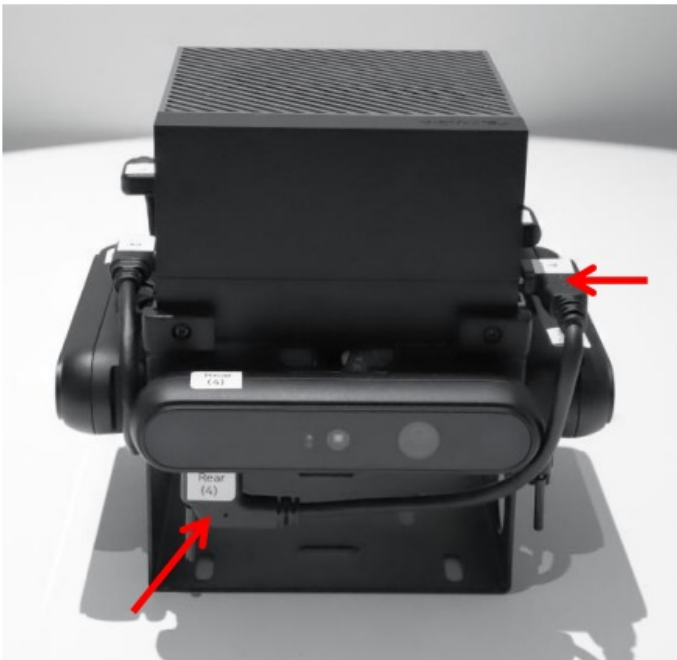
Plug in cable 2-2 (type A to C) for camera 2 (left camera)



Plug in cable 3-3 (type A to C) for camera 3 (right camera)

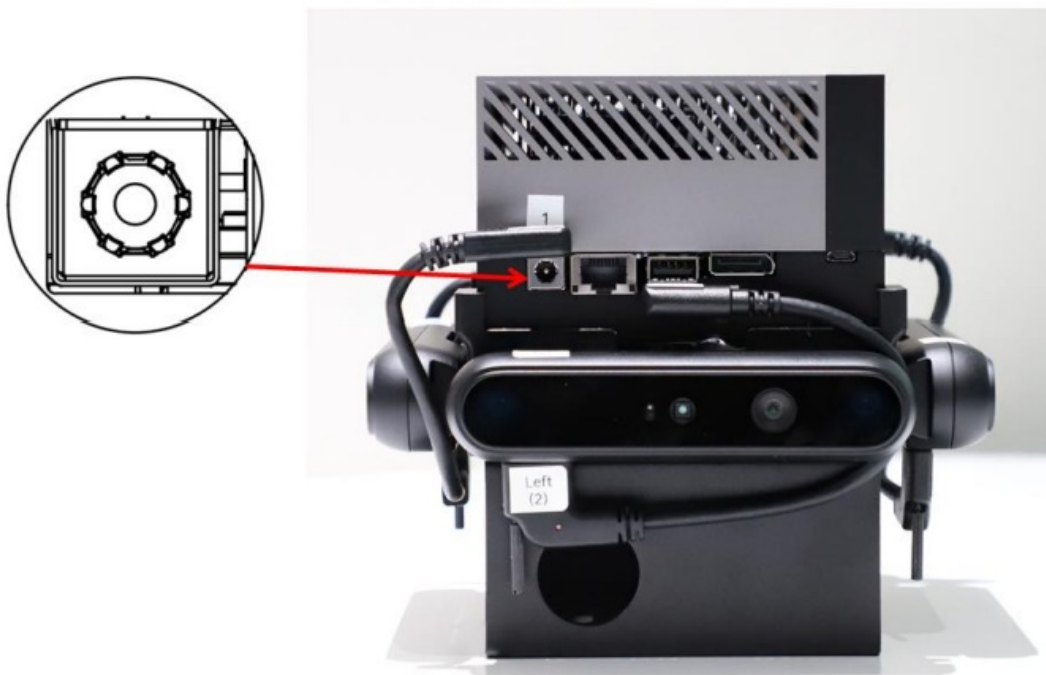


Plug in cable 4-4 (type C to C) for camera 4 (back camera)



Step 3: Provide power to the DevKit

Power the Jetson AGX Orin using the barrel DC power connector.



Step 3: First Boot Up

Log into the Jetson AGX Orin using the username and password below.

Default Username: orbbec

Password: orbbec



Step 4: Software Start Up

When ready, open the Orbbec Perceptor Developer Kit (OPDK) online document to get started (<https://github.com/orbbec/opdk>).

List of Pre-Installed Software Environment

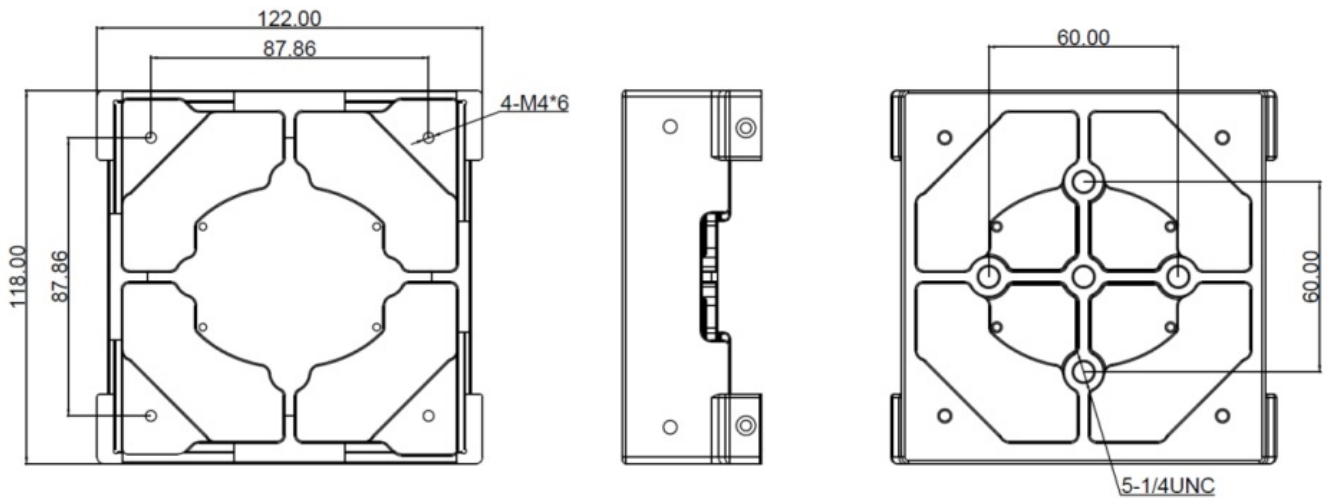
- **a.** NVIDIA Jetson Linux JetPack6.1
- **b.** NVIDIA Isaac Perceptor 3.2 (NVblox and cuVSLAM)
- **c.** OrbbecSDK_ROS2 OPDK Branch

Mounting Guide

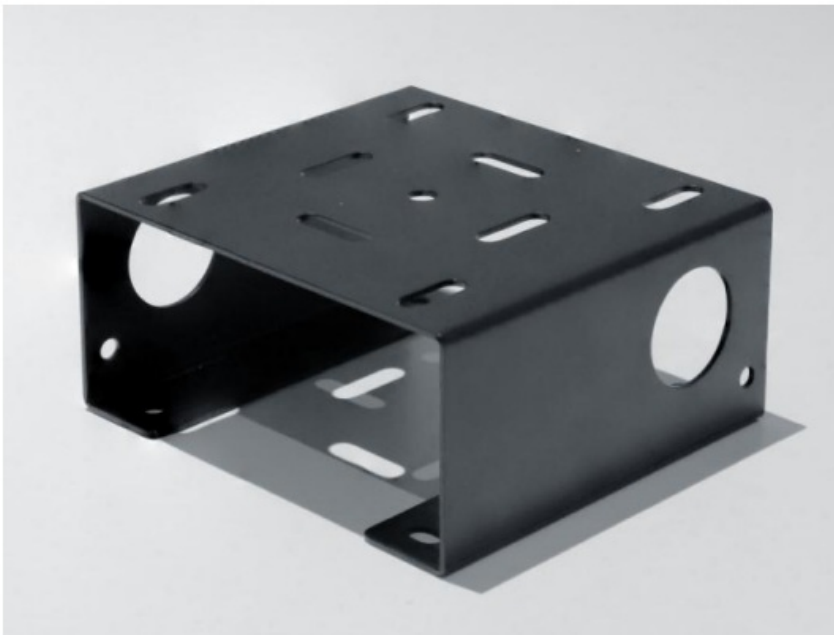
1. Photo of the camera mounting base



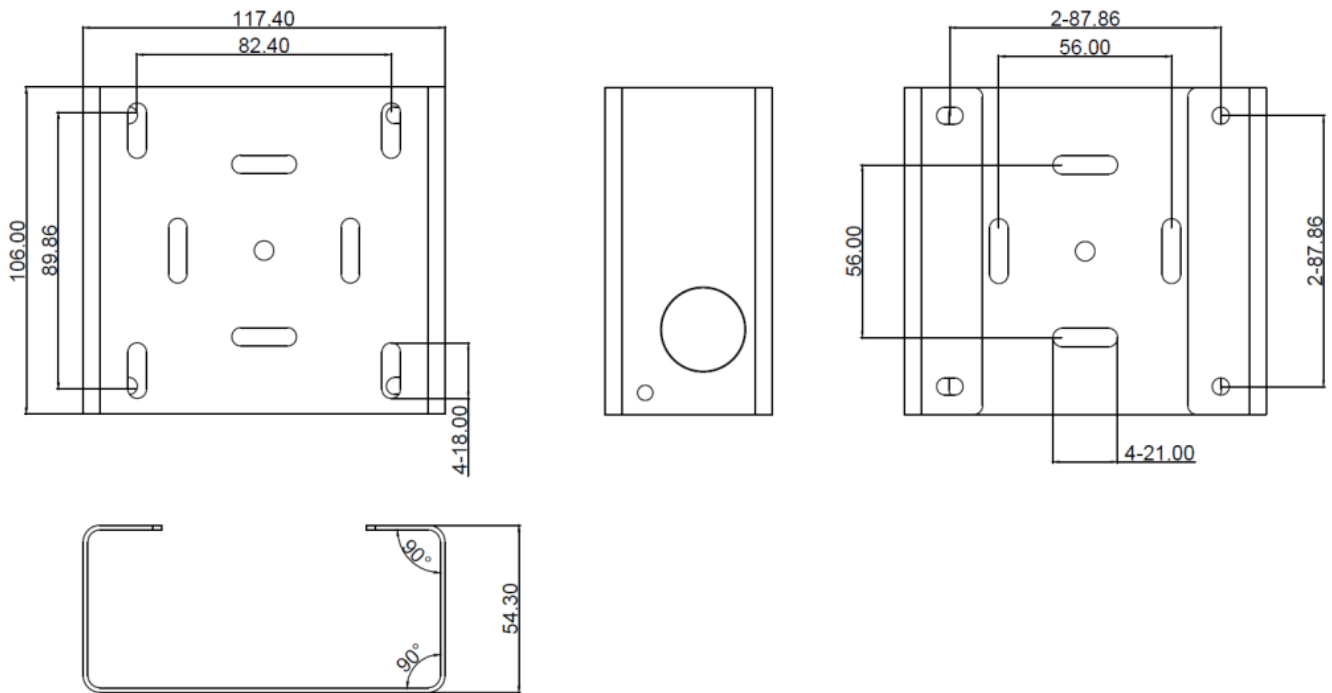
2. 2D sketches of the camera mounting base (unit:mm)



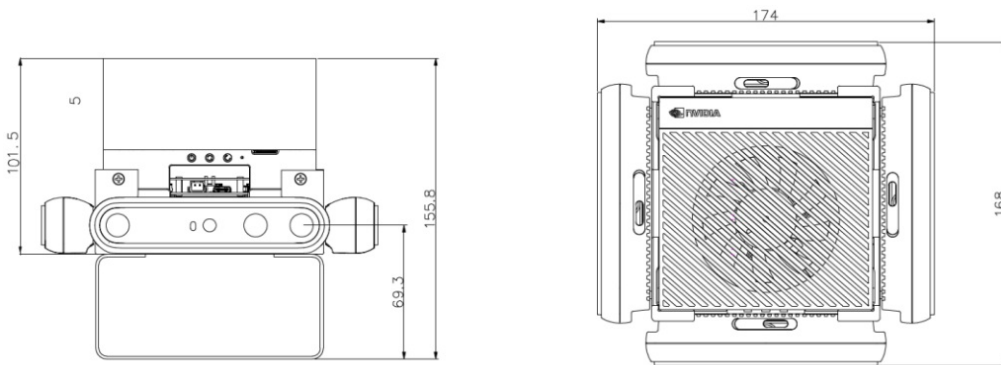
3. Photo of the Robot Mounting Adapter Bracket



4. 2D sketches of the Robot Mounting Adapter Bracket (unit: mm)



5. 2D sketches of the full assembly (unit: mm)



Documents / Resources

	<p>ORBEC OPDK Perceptor DevKit [pdf] User Guide</p> <p>OPDK Perceptor DevKit, OPDK, Perceptor DevKit, DevKit</p>
--	----------------------------------------------------------------------------------------------------------------------------------

References

- [User Manual](#)

🔧 DevKit, OPDK, OPDK Perceptor DevKit, Orbbec, Perceptor

📁 Orbbec DevKit

Leave a comment

Your email address will not be published. Required fields are marked *

Comment *

Name

Email

Website

☐ Save my name, email, and website in this browser for the next time I comment.

Post Comment

Search:

e.g. whirlpool wrf535swhz

Search

[Manuals+](#) | [Upload](#) | [Deep Search](#) | [Privacy Policy](#) | [@manuals.plus](#) | [YouTube](#)

This website is an independent publication and is neither affiliated with nor endorsed by any of the trademark owners. The "Bluetooth®" word mark and logos are registered trademarks owned by Bluetooth SIG, Inc. The "Wi-Fi®" word mark and logos are registered trademarks owned by the Wi-Fi Alliance. Any use of these marks on this website does not imply any affiliation with or endorsement.