

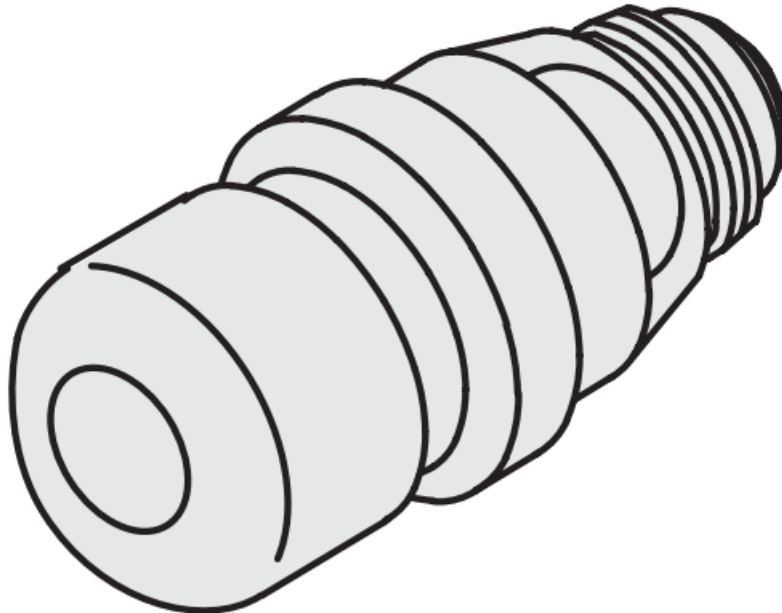


oras 945453 Push Button Valve Installation Guide

[Home](#) » [Oras](#) » oras 945453 Push Button Valve Installation Guide 



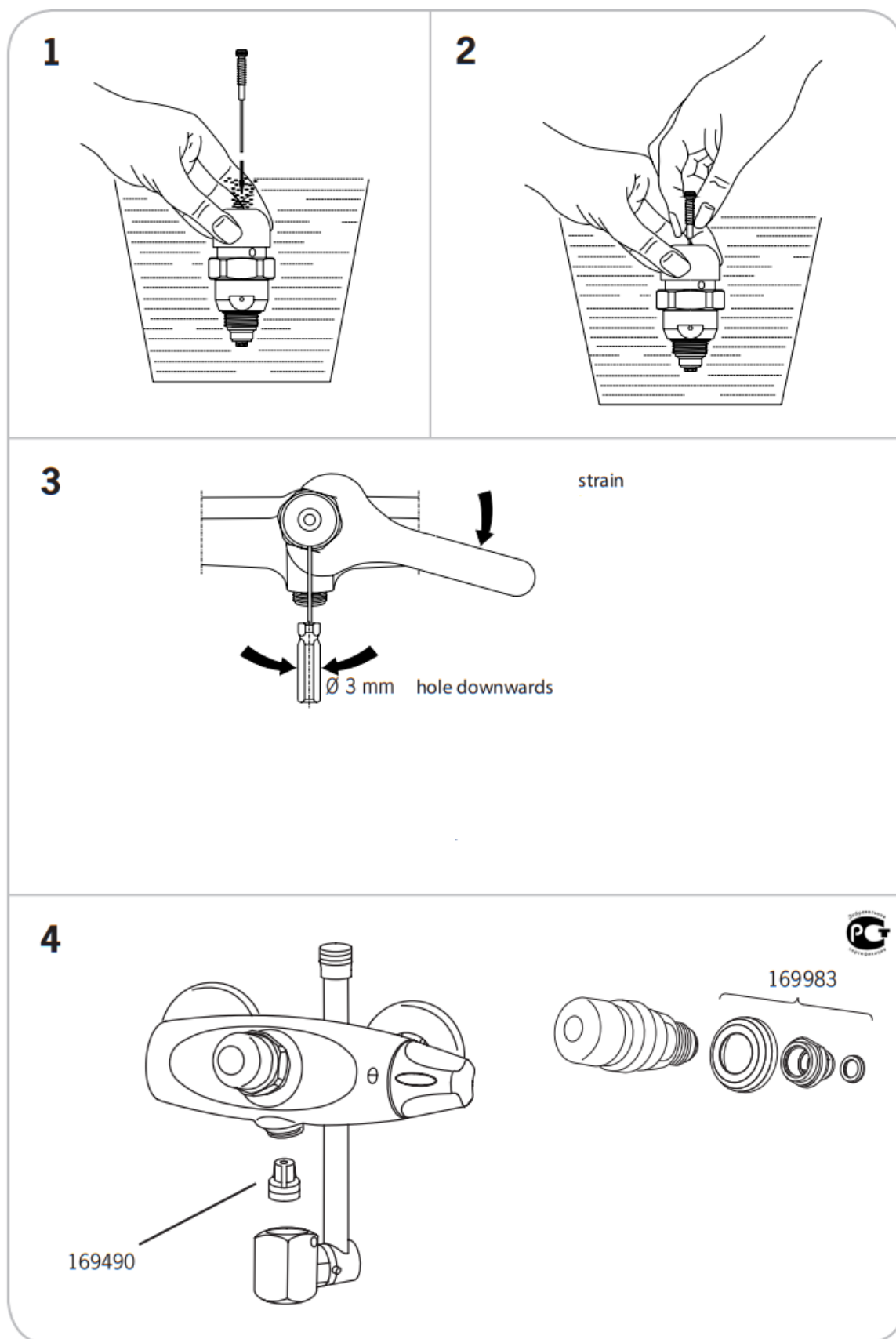
Installation and maintenance guide



Contents

- [1 945453 Push Button Valve](#)
- [2 Operations](#)
- [3 Pressure of flow](#)
- [4 Flow regulator](#)
- [5 Installation and regulation of flowtime](#)
- [6 Cleaning the regulation needle](#)
- [7 Documents / Resources](#)
 - [7.1 References](#)
- [8 Related Posts](#)

945453 Push Button Valve



Operations

Ora's push-button valve is a self-closing valve for shower use and it can be replaced with G1/2 head work for example in Oramix shower faucet. The valve automatically closes the water supply to the shower after the preset time. The time of water flow can be regulated with the push-button valve to 10 – 60 seconds. Before taking the valve into use it must be regulated equally to the water pressure. The preset time of water flow may vary in every use depending on the pressure of the flow and chosen temperature. When the pressure of the flow or temperature rises the time of flow decreases.

Pressure of flow

The Push-button valve works with 200 – 500 kPa flow pressure.

Flow regulator

A flow regulator no. 169 490 is installed to the ø 20.7 mm drilling in the faucet body. A bib tab is delivered with a G1/2 flow regulator no. 232991 which, is installed between the shower pipe and the shower colander. The flow regulator is designed to prevent unnecessarily big flow from the faucet and it creates the reverse pressure to the valve.

Note! Push-button valve no. 201500 is not recommended to be used with automatic exchangers, because when the water flow stops the automatic exchanger directs the flow to the supply pipe. When taking shower the next time one must press the push-button valve and pull the automatic exchanger to set the direction of flow to the shower. That way it is not so comfortable to use the mixer.

Installation and regulation of flowtime

-Immerse the push-button valve in the water bowl in an upright position and let the valve be filled with water (picture 1).

– Push the regulating needle to the hole and twist it with a 2 mm Allen key about 3 – 5 turns inwards while the valve is under water (picture 2).

– Twist the water-filled push-button valve to the mixer body and tighten it from the valve body (wrench width 30 mm) with a key.

– Set the cover to the right position (see picture 3) and tighten it (wrench width 41 mm). Turn on the water supply and twist the regulation needle first all the way to the bottom and then open it as many turns as needed (one whole turn means about 10 seconds of flow time).

– Install the flow regulator (picture 4).

– Launch the push button a few times and check the flow time. Regulate the flow time to desired length (for example 30 seconds) with the regulation needle. When turning it clockwise the time shortens. Push the index cap to its place.

Cleaning the regulation needle

If the time of flow gets longer in time or the valve does not close, you must clean the regulation needle from dirt. Turn off the water supply to the faucet. *)

Remove the index cap (7), for example with a knife

Twist the regulation needle out with a 2 mm Allen key

Clean the regulation needle carefully, for example with steel wool or with fine finishing paper, and then rinse it.

Twist the needle back to the hole first all the way to the bottom and then open it for 3 – 4 turns.

Turn on the water supply and regulate the flow time if necessary (see the regulation of flow time).

* **Note!** If the push-button valve is installed in the shower then the water supply must necessarily not be turned off while cleaning the needle. Water will flow out from the hole of the needle and from the shower, but by doing it this way air will not get inside the valve and trouble the work of the valve.

For lubricating use o-ring grease f.eks Oras 911311

Oras Group is a powerful European provider of sanitary fittings: the market leader in the Nordics and a leading company in Continental Europe. The company's mission is to make the use of water easy and sustainable and its vision is to become the European leader in advanced sanitary fittings. Oras Group has two strong brands: Oras and Hansa. The Group's head office is located in Rauma, Finland, and the Group has three manufacturing sites: Kralove (Czech Republic), Olesno (Poland), and Rauma (Finland). Oras Group employs approximately 1,200 people in twenty countries. Oras Group is owned by Oras Invest, a family company, and an industrial owner.



ORAS Ltd

Isometsäntie 2, P.O.
Box 40 FI-26101 Rauma



Tel. +358 2 83 161

Fax +358 2 831 6300

info.finland@oras.com

www.oras.com

Documents / Resources

  <small>Oras Installation and maintenance guide</small>	<p>oras 945453 Push Button Valve [pdf] Installation Guide 945453 Push Button Valve, 945453, Push Button Valve, Button Valve, Valve</p>
--	--

References

-  [Home](#)

Manuals+.