


oraimo
OSW-821N Smart
Watch



oraimo OSW-821N Smart Watch User Manual

[Home](#) » [oraimo](#) » oraimo OSW-821N Smart Watch User Manual 

Contents

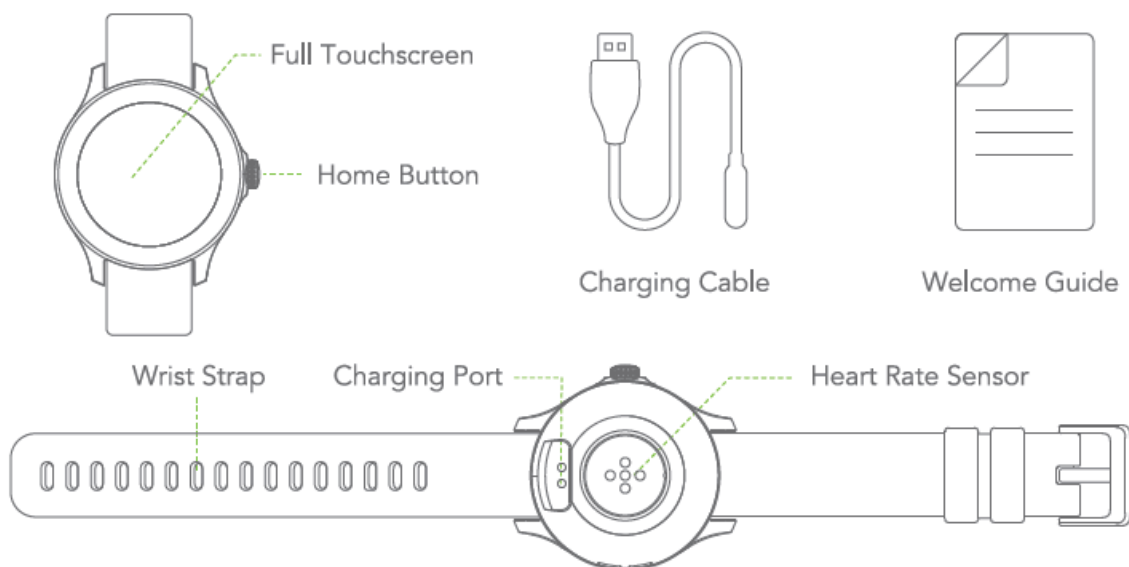
- 1 oraimo OSW-821N Smart Watch
- 2 PRODUCT OVERVIEW
- 3 BT CALLING
- 4 GETTING TO KNOW YOUR SMARTWATCH
- 5 TROUBLESHOOTING & FAQ
- 6 BASIC PRODUCT SPECIFICATIONS
- 7 WARRANTY TERMS & CONDITIONS
- 8 FCC STATEMENT
- 9 CUSTOMER SERVICE
- 10 Documents / Resources
 - 10.1 References

oraimo

oraimo OSW-821N Smart Watch



PRODUCT OVERVIEW



SETTING UP YOUR SMART WATCH

- For your best experience, we recommend using the latest Oraimo health app for iOS and Android.



iOS 12.0 or above



Android 7.0 or above

Pair With Your Phone

1. Get ready with the Primo Health app, scan the QR code on your watch, or find the Oraimo Health app in one of these locations, depending on your device:



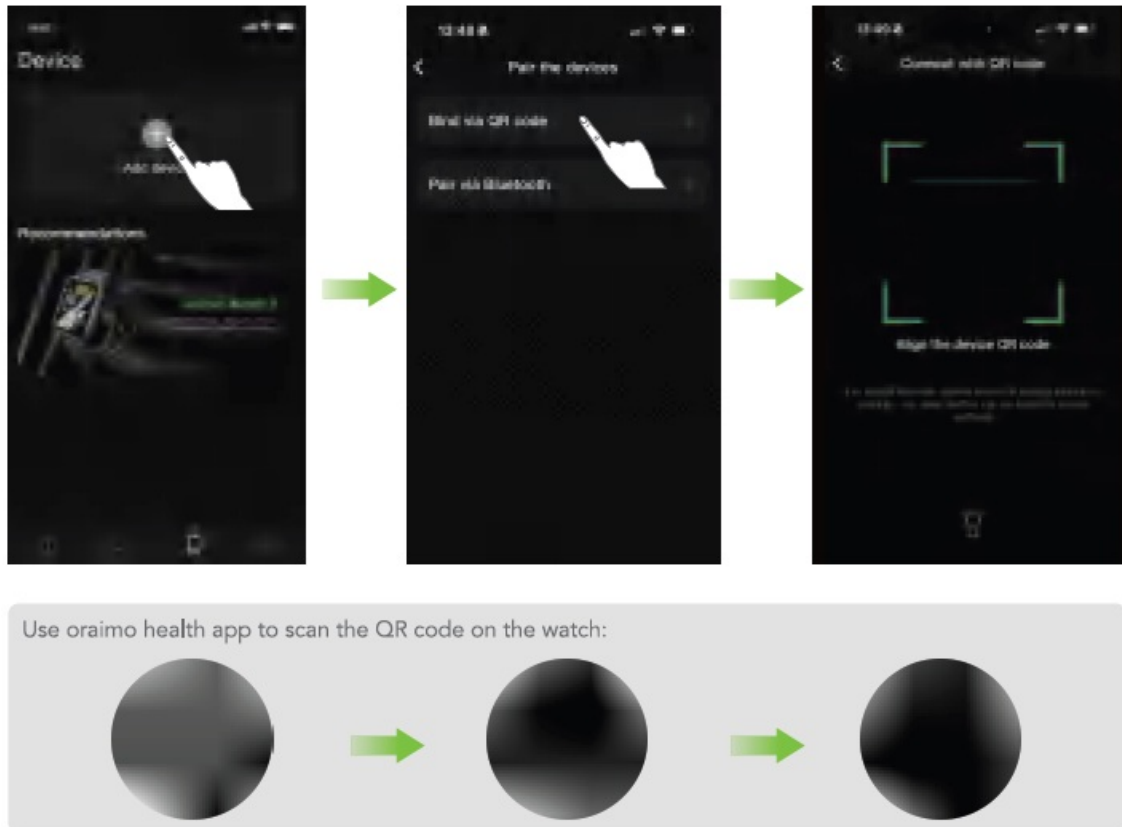
The App Store for iPhone.



The Google Play Store for Android phone.

2. When the app is installed, open it and follow the instructions that help you create your account or log in to your existing account.
3. Your account asks for information such as height, weight, and gender to make various calculations and tailor your experience using the app. You can modify your information in Oraimo Health — Account — User
4. Long press the Home Button of the watch to turn it on, follow the onscreen instructions to set up the language, and get ready pairing with the phone.

Scan the QR code to pair



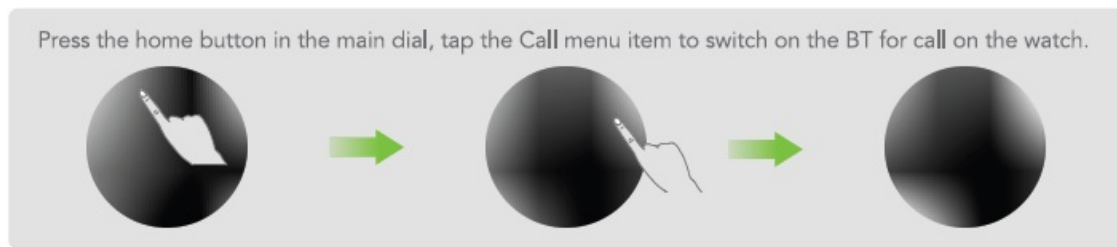
If you can't pair successfully, try the following methods:

1. Make sure the BT permission is allowed for the app;
2. Make sure the watch is not connected to another phone;
3. Try turning off and on again the BT switch on your phone;
4. If none of these work, try rebooting your phone and the watch, and repeat the above steps again.

After pairing with your phone, read through this guide to explore the various functions!

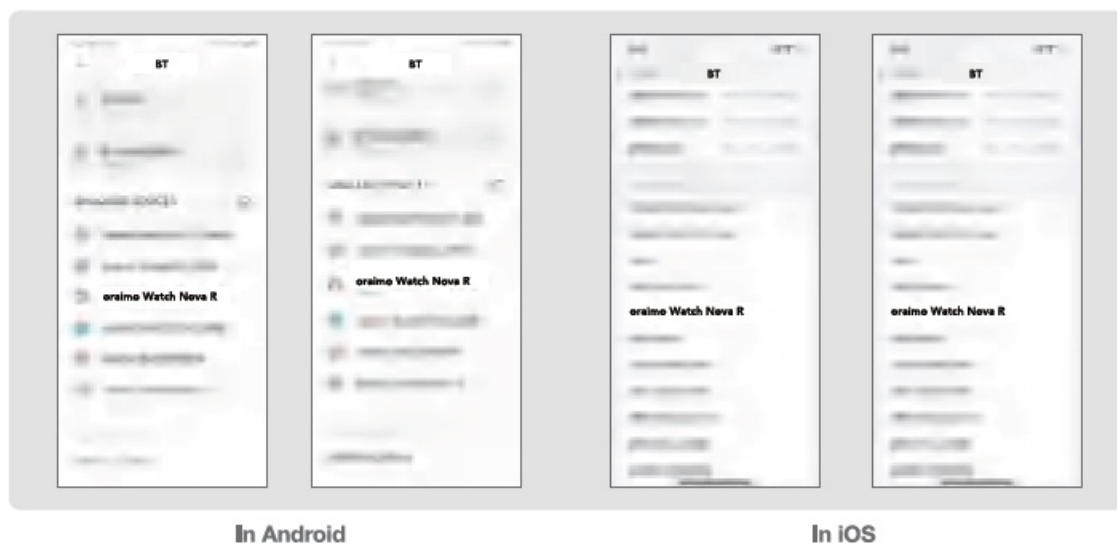
BT CALLING

- Before pairing your phone and the watch for the BT Calling function, make sure the BT for the call on the watch is switched on:



- Import your frequently used contacts into the Oraimo health app for convenient BT calling directly from your watch.
- In the BT list of the mobile system, connect to “Watch Nova Rii and you can use the watch to make calls.

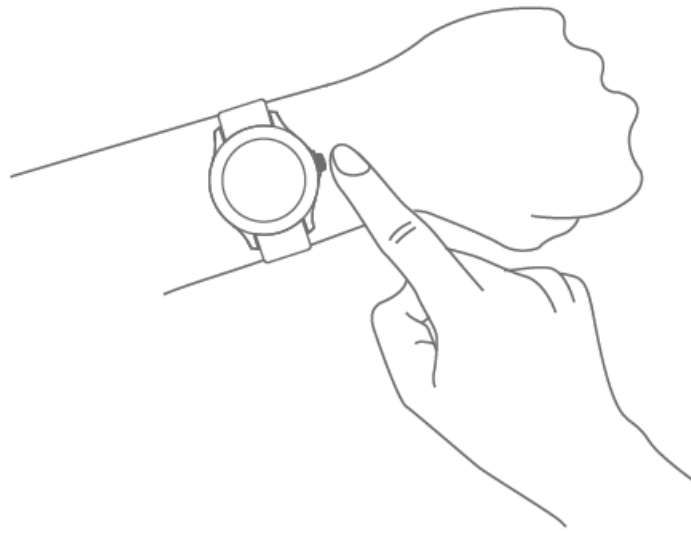
For some models of phones need to pair two devices with the same name “Watch Nova R”. There is already one BT device for health data synchronization, and a second BT device needs to be paired to activate the BT calling function.



GETTING TO KNOW YOUR SMARTWATCH

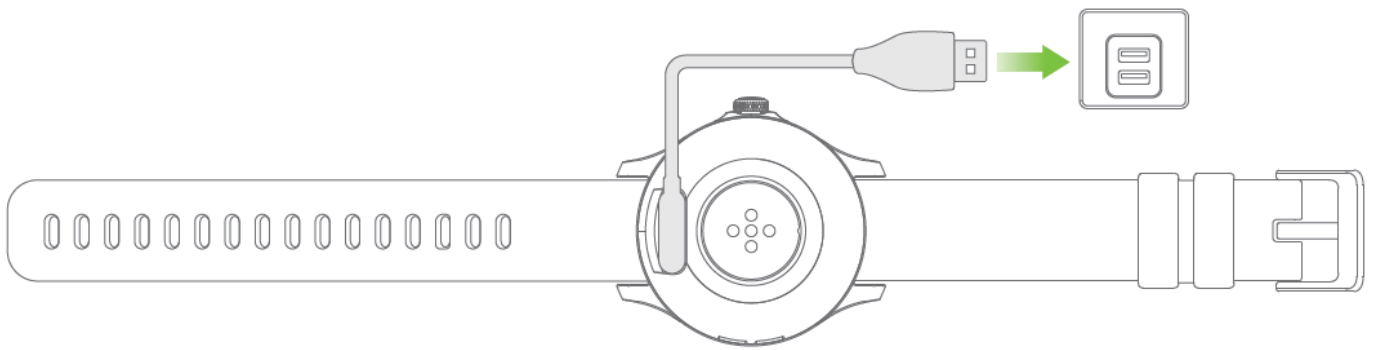
Wrist Placement

- For all-day wear, your watch should usually rest a finger's width below your wrist bone and lay flat, as you would normally wear a watch.

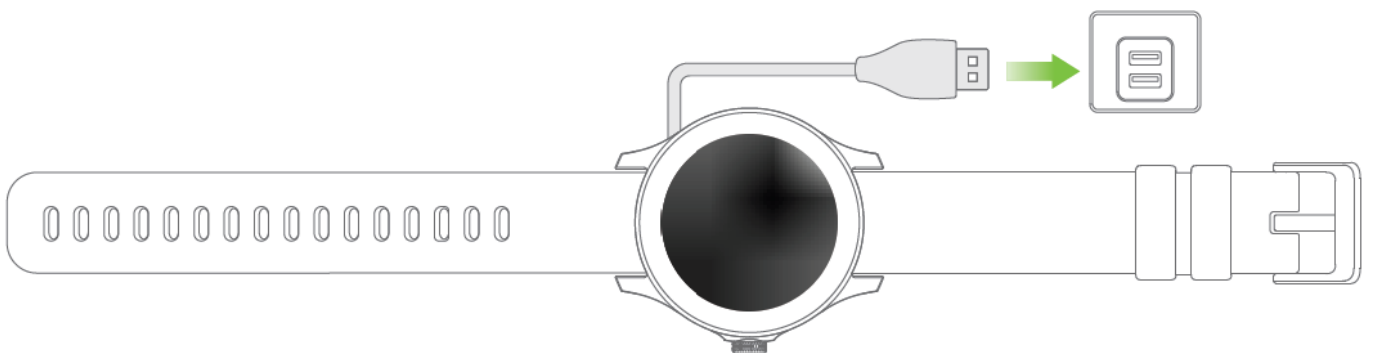


Charge Your Watch

- Connect the metal contacts on the charging dock to those on the back of the device, then put them on a flat surface.



- Connect the charging cable to a power supply, the device screen will light up and display the battery level.




- If the smartwatch was in contact with water, please use a clean, dry towel or a microfiber cloth to gently pat the watch dry, and wipe the metal contacts before charging.

Power On/Off

- When the watch is powered off, please connect it to the power and press the Home Button for 3 seconds to turn it on.
- Wake up the watch, press the Home Button for 3 seconds to select the Shutdown/Restart option, then the

- watch will vibrate and power off/restart. You can also power off from the Settings menu (Settings – Shutdown).
- If there is a problem with the watch, please connect the power supply and press and hold the Home button for more than 12 seconds to force restart the watch.

Wake Up the Watch

- Method 1: Press the Home button to light up the display.
- Method 2: Turn your wrist. (This “Raise to Wake” function is active by default. You can turn it off by tapping the Raise to Wake icon )

Explore Functions with Full-screen Gesture

- Swipe left/right/top/down to discover more functions of your watch: heart rate measurement, weather, watch dial

TROUBLESHOOTING & FAQ

Can't connect with BT.

1. Make sure that your device supports BT Version 5.2 and that your phone system is iOS 12.0 and above or Android 7.0 and above; 2. Make sure that you've set up the BT permission for the oraimo health app; 3. Check if the watch is connected to another phone. If yes, please disconnect and retry 4. Disconnect the BT on your phone and reconnect after 20 seconds; 5. Reboot the watch and your phone and repeat the above steps.

Can't find the watch in BT.

1 . Make sure that your location services are enabled GPS is working and the device has sufficient power 2. Keep the device screen activated and place it close to your phone 3. Make sure that the watch is not connected to another phone 4. Disconnect the Bluetooth on your phone and reconnect after 20 seconds. If you still cannot find it, please turn off your phone's BT function and reconnect after 20 seconds.

Cannot monitor heart rate or blood oxygen.

Make sure that the optical monitoring sensor is in direct contact with your skin.

Can't receive notifications after enabling it.

For Android users, please make sure that the device is connected to your phone. Set up notifications permission for the Oraimo health app in the phone system as well as in the Oraimo health app settings. Add the primo health app to the trust list if any security software installed prevents its functioning. For iPhone users, please make sure that the device is connected to your phone. Reboot your phone and try to reconnect.

Is the product waterproof?

This watch supports IP68 waterproof function. You can wear it while washing hands or washing the car. However, please avoid wearing it while diving or taking showers.

Do I need to connect BT all the time? Will my health and sleep data stored if not connected to the phone?

The -data will be kept on the watch for 7 days. When reconnected to the phone, your health and sleep data will be synced automatically. Please synchronize data in time to get maximized utility.

BASIC PRODUCT SPECIFICATIONS

- **Screen Size:** 1.39" TFT 360*360
- **BT Version:** V5.2
- **Battery Capacity:** 300mAh
- **Battery Type:** Lithium Polymer Battery
- **Charging Time:** 3 hours
- **Standby Time:** 40 days
- **Usage Time:** Up to 12 days
- **Watch Size:** 50.3*39.4*13.1 mm (Without strap)
- **Weight:** 42.7g (with strap)
- **Material:** ABS/PC/Silicone

*Doraemon Lab test results

WARRANTY CERTIFICATE

Name :	
Address :	
Tel. No. :	
Date of purchase : (dd/mm/yy)	
Store name :	
Warranty period :	

WARRANTY TERMS & CONDITIONS

- All quality-related defects on items sold directly by Oraimo or Oraimo's authorized resellers are covered by an extensive warranty, starting from the date of purchase.
- oraimo's limited warranty is restricted to the country of purchase. The limited warranty is void on items taken outside the country they were originally bought in or shipped to directly from an authorized online purchase.
- This warranty covers only original Doraemon products. It is not applicable to normal wear and tear, or any defects arising from damage caused by misuse of this product.
- Warranty is for the primary product only not transferable. Any free additional product(s) are not covered in this warranty.
- If the product fails regardless of usage in compliance with the instruction manual and other written precautions, replacement will be provided free of charge.
- To claim the warranty, contact the services team from the platform or store where you bought from.

User Manual

- Smart Watch
- Model: OSW-821 N
- Hereby, ORAIMO TECHNOLOGY LIMITED
- Declares that this Smart Watch is in compliance with the essential requirements and other relevant provisions of directive 2014/53/EU.

CAUTION

1. Risk of explosion if the battery is replaced by an incorrect type, dispose of used batteries according to the instructions.
 - disposal of a battery into a fire or a hot oven, or mechanically crushing or cutting of a battery, that can result in an explosion;
 - leaving a battery in an extremely high temperature surrounding environment that can result in an explosion or the leakage of flammable liquid or gas;
 - a battery subjected to extremely low air pressure that may result in an explosion or the leakage of flammable liquid or gas.

2. EUT Temperature: OC —+45 C (Standalone). OC —+40 C (with adapter).

Operating Frequency:

BT: 2400-2483.5MHz (TX/RX)

Modulation mode: GFSK , n/4-DQPSK , 8DPSK (BT) GFSK (BLE) Max. Of Transmit power: BT(EDR): 2.63dBm

BLE:-0.99dBm

FCC STATEMENT**FCC Caution**

Labeling requirements.

This device complies with Part 15 of the FCC Rules. Operation is subject to the following two conditions:

1. This device may not cause harmful interference.
2. This device must accept any interference received, including interference that may cause undesired operation.

Information to the user.

Any changes or modifications not expressly approved by the party responsible for compliance could void the user's authority to operate the equipment.

Information to the user.

Note: This equipment has been tested and found to comply with the limits for a Class B digital device, pursuant to Part 15 of the FCC Rules.

These limits are designed to provide reasonable protection against harmful interference in a residential installation. This equipment generates uses and can radiate radio frequency energy and, if not installed and used in accordance with the instructions, may cause harmful interference to radio communications. However, there is no guarantee that interference will not occur in a particular installation.

If this equipment does cause harmful interference to radio or television reception, which can be determined by turning the equipment off and on, the user is encouraged to try to correct the interference by one or more of the following measures:

- Reorient or relocate the receiving antenna.
- Increase the separation between the equipment and the receiver.
- Connect the equipment to an outlet on a circuit different from that to which the receiver is connected.
- Consult the dealer or an experienced radio/TV technician for help.

Note: This device and its antenna(s) must not be co-located or operated in conjunction with any other antenna or transmitter.

RF Exposure Statement

The device has been evaluated to meet general RF exposure requirements. The device can be used in portable exposure conditions without restriction.

EU DECLARATION OF CONFORMITY

in accordance with

Annex VI of Directive 2014/53/EU of the European Parliament and of the Council For the following Radio equipment:

Model: OSW-821 N

Product: Smart Watch

1. Trade name or Brand: Doraemon
Software / Hardware number: VI .0.7/ V03
2. Name and address of the manufacturer or his authorized representative:
Manufacturer: ORAIMO TECHNOLOGY LIMITED
Address: FLAT N 16/F BLOCK B UNIVERSAL INDUSTRIAL CENTRE 19-25 SHAN MEI STREET FOTAN NT HONGKONG
3. This declaration of conformity is issued under the sole responsibility of the Manufacturer.
4. The object of the declaration (identification of the radio equipment allowing traceability; it may include a color image of sufficient clarity where necessary for the identification of the radio equipment):
5. The object of the declaration described above is in conformity with the relevant Union harmonization legislation:
Directive 2014/53/EU (RED)
6. References to the relevant harmonized standards used or references to the other technical specifications in relation to which conformity is declared:
Article 3.1a Health: EN 62479:2010 EN 50663:2017
Article 3.1a Electrical Safety: EN62368-1:2014+A11 :2017
EN IEC 62368-1 :2020+A11:2020
Article 3.1b: ETSI EN 301 489-1 V2.2.3 (2019-11) ETSI EN 301 489-17 V3.2.4(2020-09)
Article 3.2: ETSI EN 300 328 V2.2.2 (2019-07)
7. Notified Body Name: Eurofins Electrical and Electronic Testing NA, Inc. Notified Body Number: 0980
Notified Body Assessment Performed: Module B/C on Article 3.1 a, 3.1b and 3.2
Technical File Identification Number: N/A
8. Where applicable, a description of accessories and components, including software, which allows the radio equipment to operate as intended and covered by the EU declaration of conformity: User instructions are provided in the User Manual.
The Software and Hardware versions are specified above.
9. Additional information:
Referring to Article 10.2 of the Directive, this equipment is so constructed that it can be operated in all Member States, without infringing applicable requirements on the use of radio spectrum.
Referring to Article 10.10 of the Directive, there are no restrictions on putting this equipment into service or requirements for authorization of use. Please refer to the User Manual for details.

On behalf of:

Manufacturer: ORAIMO TECHNOLOGY LIMITED

Address: FLAT N 16/F BLOCK B UNIVERSAL INDUSTRIAL CENTRE 19-25 SHAN MEI STREET FOTAN NT HONGKONG (place and date of issue): Shenzhen, 2024-06-07 (name, function): YangDaozhuang/ Manager

(signature): (Name and signature  of the person responsible)

CUSTOMER SERVICE

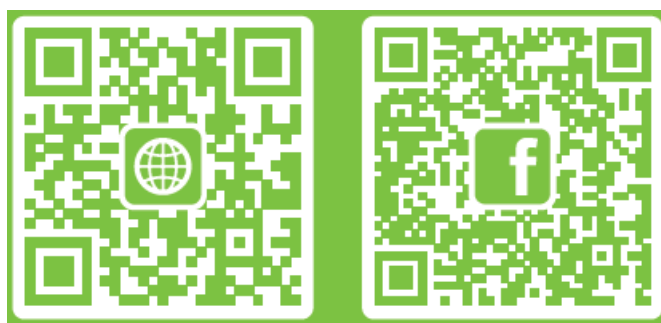
- 365 DAYS WARRANTY
- E India: care@oraimo.com
- Kenya: care.ke@oraimo.com
- Morocco: care.ma@oraimo.com
- South Africa: care.za@oraimo.com

- Tanzania: care.tz@oraimo.com
- Ivory Coast: care.ci@oraimo.com
- Angola: care.ao@oraimo.com
- Nigeria: care.ng@oraimo.com
- Ghana: care.gh@oraimo.com
- Egypt: care.eg@oraimo.com
- Cameroon: care.cmr@oraimo.com
- UAE: care.ae@oraimo.com
- Bangladesh: care.bd@oraimo.com
- Others: service@carlcare.com



For more information, please visit:

- www.oraimo.com
- @oraimo accessories



Documents / Resources

	oraimo OSW-821N Smart Watch [pdf] User Manual OSW-821N Smart Watch, OSW-821N, Smart Watch, Watch
--	---

References

- [User Manual](#)

Manuals+. Privacy Policy

This website is an independent publication and is neither affiliated with nor endorsed by any of the trademark owners. The "Bluetooth®" word mark and logos are registered trademarks owned by Bluetooth SIG, Inc. The "Wi-Fi®" word mark and logos are registered trademarks owned by the Wi-Fi Alliance. Any use of these marks on this website does not imply any affiliation with or endorsement.